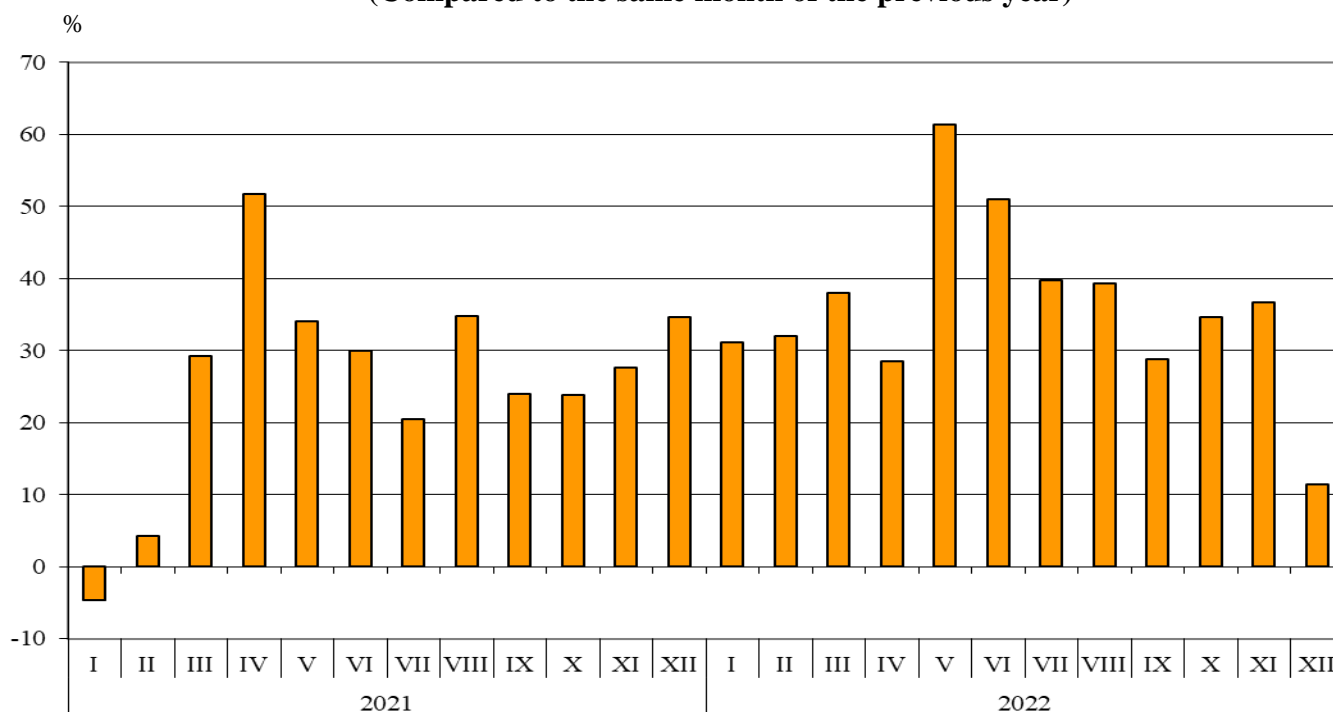


TRADE IN GOODS OF BULGARIA IN 2022 - FINAL DATA

In **2022**, the **goods exported** from Bulgaria amounted to 92 917.8 million BGN or 35.8% more than in 2021 (Annex, Tables 1 and 2). In comparing monthly data for 2022 with the data for the corresponding month of the previous year, the highest growth in exports was observed in May (61.4%), while a fall was not registered in any of the months.

**Figure 1. Nominal value¹ change of exports of goods from Bulgaria in the period 2021 - 2022
(Compared to the same month of the previous year)**

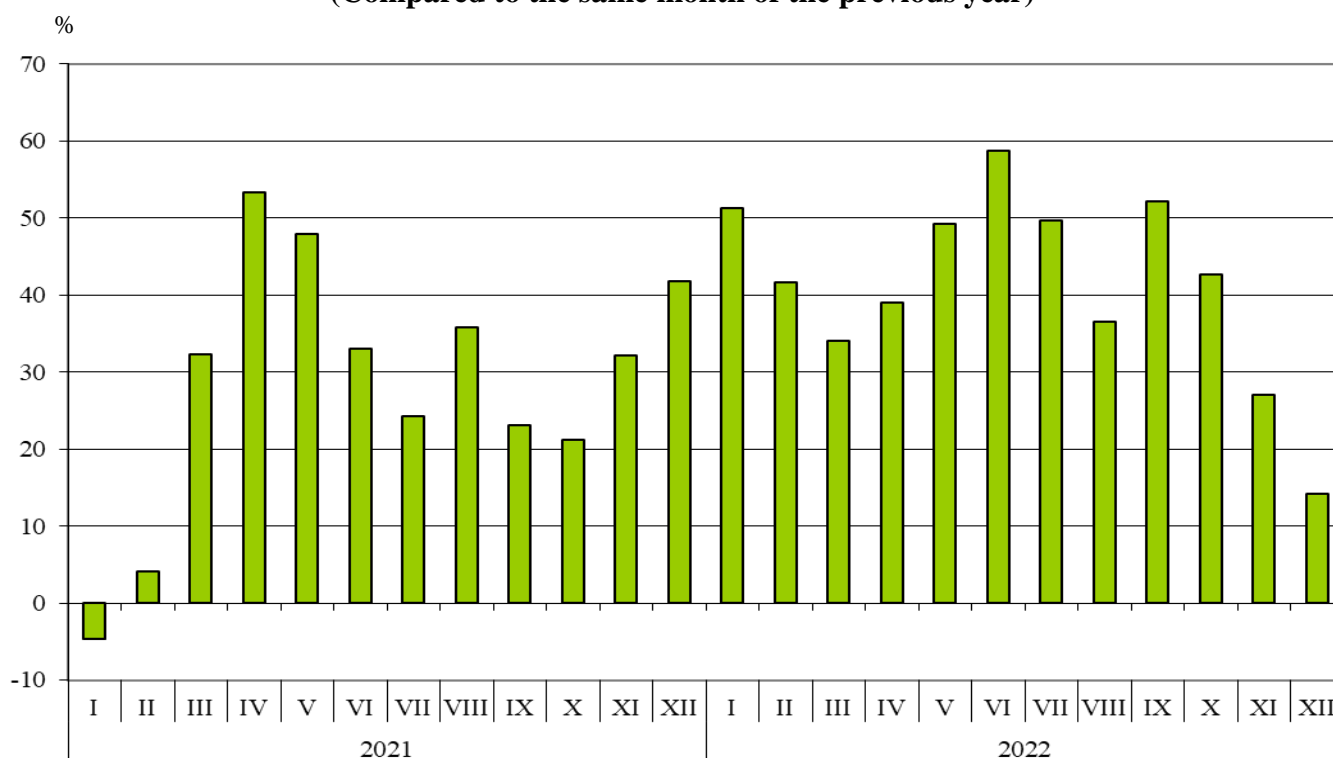


In the **exports** of goods from Bulgaria, distributed according to the **Standard International Trade Classification**, in 2022 compared to 2021, the largest growth was reported in the section 'Mineral fuel, lubricants and related materials' (159.1%). A fall was not observed in any of the sections (Annex, Table 4).

¹ Value changes at current prices.

The imported goods in 2022 were for 107 912.8 million BGN (at CIF prices)¹, which is 40.6% more than the previous year (Annex, Tables 1 and 2). Analyzing the monthly data on imports in 2022 and the corresponding ones in 2021, the biggest increase was observed in June (58.7%). Decrease was not registered in any of the months.

Figure 2. Nominal value² change of imports of goods to Bulgaria in the period 2021 - 2022
(Compared to the same month of the previous year)



In the imports of goods to Bulgaria, distributed according to the **Standard International Trade Classification**, in 2022 compared to the previous year, the largest growth was registered in the section 'Animal and vegetable oils, fats and waxes' (222.1%), while a fall was not observed in any of the sections.

Foreign trade balance (exports FOB - import CIF) was negative in 2022 and amounted to 14 995.0 million BGN (Annex, Tables 1 and 2).

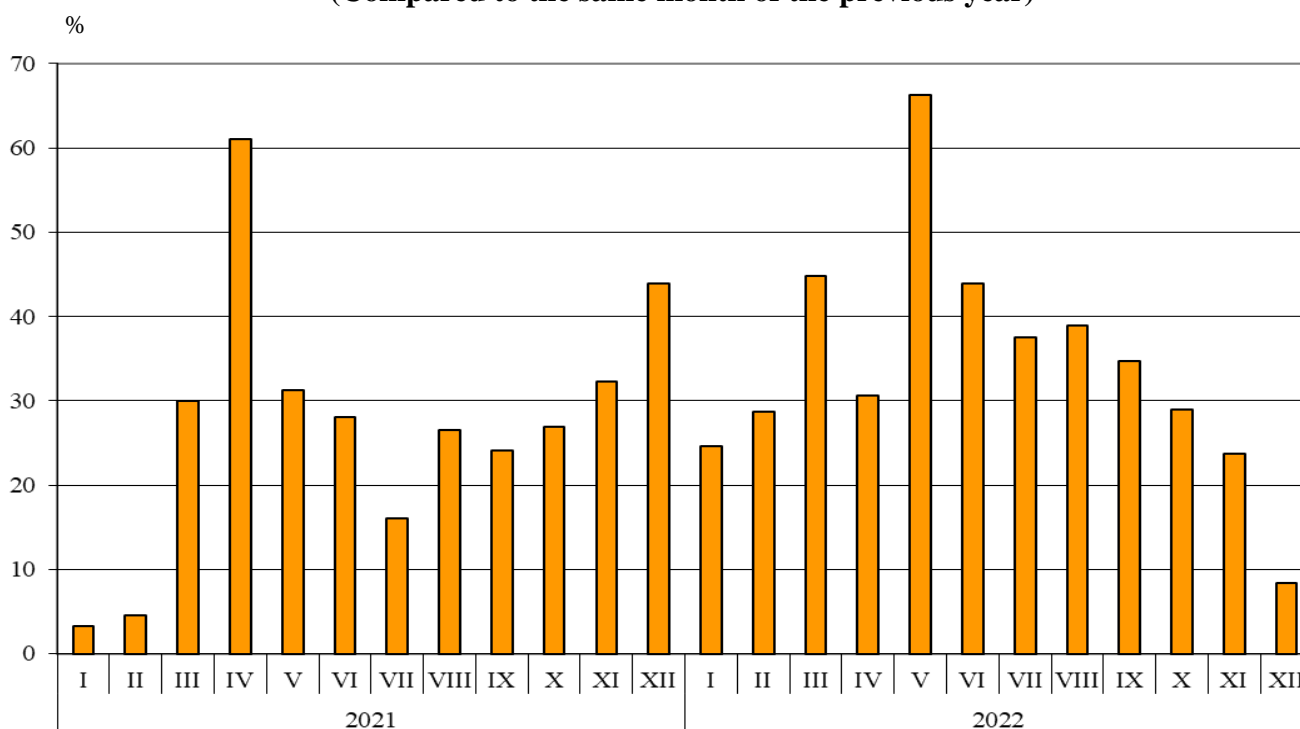
¹ Imports at FOB prices are calculated by BNB
(http://bnb.bg/Statistics/StExternalSector/StForeignTrade/StFTImports/index.htm?toLang=_EN).

² Value changes at current prices.

Trade in goods of Bulgaria with the EU

In 2022, the **exports** of goods from Bulgaria to the EU countries increased by 33.8% compared to the previous year and amounted to 60 583.5 million BGN (Annex, Tables 1 and 2). Main trade partners of Bulgaria were Germany, Romania, Italy, Greece, France and the Netherlands, which accounted for 67.8% of the exports to the EU (Annex, Table 3).

**Figure 3. Nominal value¹ change of exports of goods from Bulgaria to EU in the period 2021 - 2022
(Compared to the same month of the previous year)**

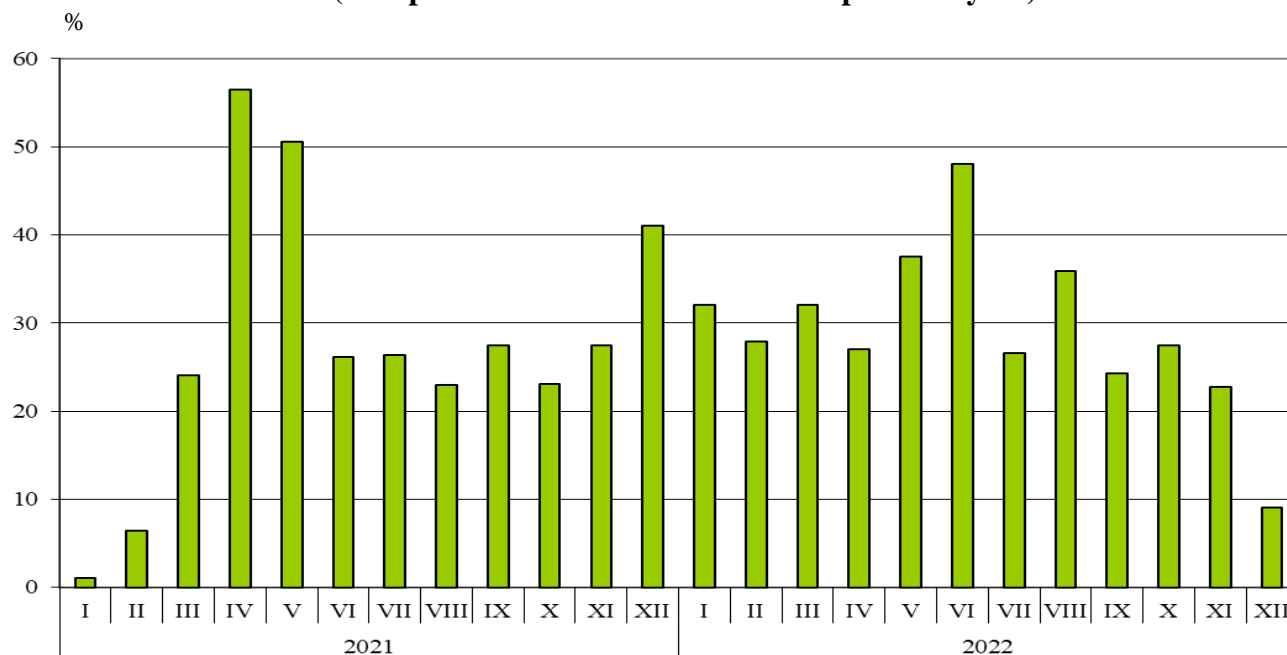


In the exports of goods from Bulgaria to the EU, distributed according to the **Standard International Trade Classification**, in 2022 compared to 2021, the largest growth was registered in section 'Animal and vegetable oils, fats and waxes' (126.0%) (Annex, Table 4). A fall was observed only in section 'Beverages and tobacco' (9.9%).

¹ Value changes at current prices.

The **imports** of goods to Bulgaria **from the EU countries** in 2022 increased by 28.7% compared to 2021 and amounted to 59 612.4 million BGN (Annex, Tables 1 and 2). The most significant amounts were reported for the goods imported from Germany, Romania, Italy, Greece and the Netherlands, which represent 60.9% from the imports from the EU.

Figure 4. Nominal value¹ change of imports of goods to Bulgaria from EU in the period 2021 - 2022
(Compared to the same month of the previous year)



In the imports of goods from the EU, distributed according to the **Standard International Trade Classification**, in 2022 compared to the previous year, the largest growth was registered in section 'Animal and vegetable oils, fats and waxes' (81.8%), while a fall was not observed in any of the sections.

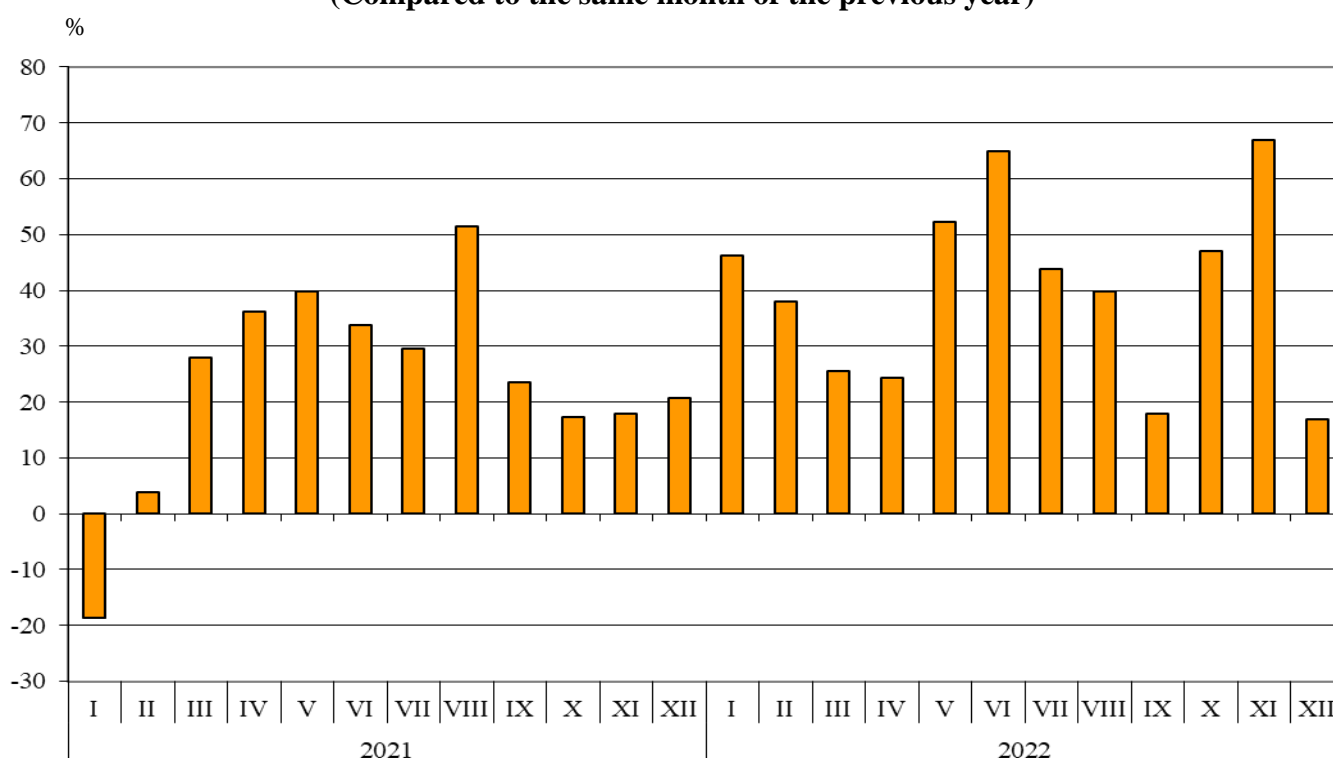
Foreign trade balance (exports FOB - import CIF) of Bulgaria **with the EU countries** in 2022 was positive and amounted to 971.1 million BGN (Annex, Table 1).

¹ Value changes at current prices.

Bulgarian trade in goods with third countries

In 2022, the **exports** of goods from Bulgaria **to third countries** increased by 39.6% compared to the previous year and added up to 32 334.3 million BGN (Annex, Tables 1 and 2). Leading trade partners of Bulgaria were Türkiye, Serbia, Ukraine, the United States, China, the Republic of North Macedonia and the United Kingdom, which accounted for 51.6% of the total exports to non-EU countries (Annex, Table 3).

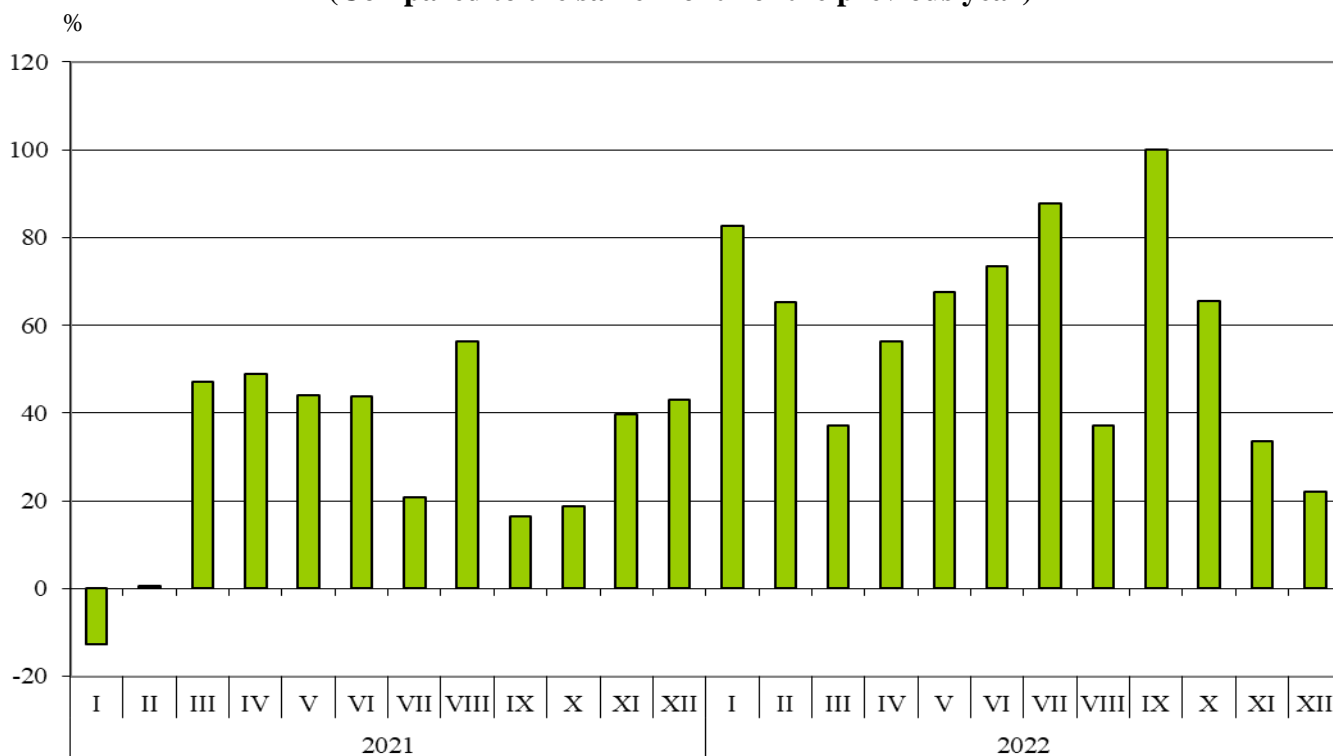
Figure 5. Nominal value¹ change of exports of goods from Bulgaria to non-EU countries in the period 2021 - 2022
(Compared to the same month of the previous year)



The **imports** of goods to Bulgaria **from third countries** in 2022 increased by 58.8% compared to 2021 and amounted to 48 300.4 million BGN (Annex, Tables 1 and 2). The largest amounts were reported for the goods imported from the Russian Federation, Türkiye, China, Ukraine and Serbia whose share amounted to 66.9% of the total imports from non-EU countries.

¹ Value changes at current prices.

**Figure 6. Nominal value¹ change of imports of goods to Bulgaria from non-EU countries
in the period 2021 - 2022
(Compared to the same month of the previous year)**



Foreign trade balance of Bulgaria (export FOB - import CIF) **with third countries** in 2022 was negative and amounted to 15 966.1 million BGN (Annex, Table 1).

¹ Value changes at current prices.

Annex

Table 1

Exports, imports and trade balance of Bulgaria in 2021 and 2022 by months

Final data

(Million BGN)

Months/Periods	Exports - FOB			Imports - CIF ¹			Trade balance - FOB/CIF		
	Total	EU	Non-EU	Total	EU	Non-EU	Total	EU	Non-EU
I.2021	4761.6	3310.9	1450.7	5050.2	3129.4	1920.8	-288.6	181.5	-470.1
II.2021	5057.2	3317.9	1739.3	5432.4	3433.6	1998.8	-375.2	-115.7	-259.5
III.2021	5824.0	3746.3	2077.7	6689.0	3998.0	2691.0	-865.0	-251.7	-613.3
I - III.2021	15642.8	10375.1	5267.7	17171.6	10561.0	6610.6	-1528.8	-185.9	-1342.9
IV.2021	5905.3	3937.1	1968.2	6078.1	3599.7	2478.4	-172.8	337.4	-510.2
V.2021	5155.3	3357.6	1797.7	6043.0	3686.5	2356.5	-887.7	-328.9	-558.8
VI.2021	5734.5	3790.9	1943.6	6440.2	3751.9	2688.3	-705.7	39.0	-744.7
IV - VI.2021	16795.1	11085.6	5709.5	18561.3	11038.1	7523.2	-1766.2	47.5	-1813.7
I - VI.2021	32437.9	21460.7	10977.2	35732.9	21599.1	14133.8	-3295.0	-138.4	-3156.6
VII.2021	5861.3	3830.2	2031.1	6353.2	3949.7	2403.5	-491.9	-119.5	-372.4
VIII.2021	5605.9	3536.7	2069.2	6253.2	3475.9	2777.3	-647.3	60.8	-708.1
IX.2021	6057.0	3945.2	2111.8	6601.0	4167.3	2433.7	-544.0	-222.1	-321.9
VII - IX.2021	17524.2	11312.1	6212.1	19207.4	11592.9	7614.5	-1683.2	-280.8	-1402.4
I - IX.2021	49962.1	32772.8	17189.3	54940.3	33192.0	21748.3	-4978.2	-419.2	-4559.0
X.2021	6161.4	4221.7	1939.7	6880.2	4127.9	2752.3	-718.8	93.8	-812.6
XI.2021	6262.2	4377.3	1884.9	7558.6	4518.8	3039.8	-1296.4	-141.5	-1154.9
XII.2021	6045.5	3898.8	2146.7	7363.5	4494.2	2869.3	-1318.0	-595.4	-722.6
X - XII.2021	18469.1	12497.8	5971.3	21802.3	13140.9	8661.4	-3333.2	-643.1	-2690.1
I - XII.2021	68431.2	45270.6	23160.6	76742.6	46332.9	30409.7	-8311.4	-1062.3	-7249.1
I.2022	6244.6	4124.4	2120.2	7643.0	4132.2	3510.8	-1398.4	-7.8	-1390.6
II.2022	6673.8	4272.2	2401.6	7694.6	4390.7	3303.9	-1020.8	-118.5	-902.3
III.2022	8035.5	5425.9	2609.6	8966.6	5278.8	3687.8	-931.1	147.1	-1078.2
I - III.2022	20953.9	13822.5	7131.4	24304.2	13801.7	10502.5	-3350.3	20.8	-3371.1
IV.2022	7590.2	5141.0	2449.2	8445.5	4571.6	3873.9	-855.3	569.4	-1424.7
V.2022	8322.2	5584.1	2738.1	9020.1	5071.1	3949.0	-697.9	513.0	-1210.9
VI.2022	8659.8	5453.8	3206.0	10219.3	5554.4	4664.9	-1559.5	-100.6	-1458.9
IV - VI.2022	24572.2	16178.9	8393.3	27684.9	15197.1	12487.8	-3112.7	981.8	-4094.5
I - VI.2022	45526.1	30001.4	15524.7	51989.1	28998.8	22990.3	-6463.0	1002.6	-7465.6
VII.2022	8187.0	5266.7	2920.3	9513.6	5001.4	4512.2	-1326.6	265.3	-1591.9
VIII.2022	7809.0	4915.0	2894.0	8535.3	4724.1	3811.2	-726.3	190.9	-917.2
IX.2022	7803.3	5313.9	2489.4	10043.6	5178.1	4865.5	-2240.3	135.8	-2376.1
VII - IX.2022	23799.3	15495.6	8303.7	28092.5	14903.6	13188.9	-4293.2	592.0	-4885.2
I - IX.2022	69325.4	45497.0	23828.4	80081.6	43902.4	36179.2	-10756.2	1594.6	-12350.8
X.2022	8296.5	5445.2	2851.3	9821.0	5262.9	4558.1	-1524.5	182.3	-1706.8
XI.2022	8559.4	5414.7	3144.7	9603.7	5546.6	4057.1	-1044.3	-131.9	-912.4
XII.2022	6736.5	4226.6	2509.9	8406.5	4900.5	3506.0	-1670.0	-673.9	-996.1
X - XII.2022	23592.4	15086.5	8505.9	27831.2	15710.0	12121.2	-4238.8	-623.5	-3615.3
I - XII.2022	92917.8	60583.5	32334.3	107912.8	59612.4	48300.4	-14995.0	971.1	-15966.1

¹ Imports at FOB prices are calculated by BNB

(http://bnb.bg/Statistics/StExternalSector/StForeignTrade/StFTImports/index.htm?toLang=_EN&toLang=_EN).

Table 2

**Value changes of exports and imports of Bulgaria in 2022
compared to the same period of the previous year**

(Per cent)

Months/Periods	Exports - FOB			Imports - CIF		
	Total	EU	Non-EU	Total	EU	Non-EU
I	31.1	24.6	46.2	51.3	32.0	82.8
II	32.0	28.8	38.1	41.6	27.9	65.3
III	38.0	44.8	25.6	34.0	32.0	37.0
I - III	34.0	33.2	35.4	41.5	30.7	58.9
IV	28.5	30.6	24.4	38.9	27.0	56.3
V	61.4	66.3	52.3	49.3	37.6	67.6
VI	51.0	43.9	65.0	58.7	48.0	73.5
IV - VI	46.3	45.9	47.0	49.2	37.7	66.0
I - VI	40.3	39.8	41.4	45.5	34.3	62.7
VII	39.7	37.5	43.8	49.7	26.6	87.7
VIII	39.3	39.0	39.9	36.5	35.9	37.2
IX	28.8	34.7	17.9	52.2	24.3	99.9
VII - IX	35.8	37.0	33.7	46.3	28.6	73.2
I - IX	38.8	38.8	38.6	45.8	32.3	66.4
X	34.7	29.0	47.0	42.7	27.5	65.6
XI	36.7	23.7	66.8	27.1	22.7	33.5
XII	11.4	8.4	16.9	14.2	9.0	22.2
X - XII	27.7	20.7	42.4	27.7	19.6	39.9
I - XII	35.8	33.8	39.6	40.6	28.7	58.8

Table 3

Exports, imports and trade balance by groups of countries and main partner countries¹ of Bulgaria in 2021 and 2022

Countries and groups of countries	Exports - FOB			Imports - CIF			Trade balance - FOB/CIF	
	2021	2022	Change compared to the same period of the previous year - %	2021	2022	Change compared to the same period of the previous year - %	2021	2022
	Million BGN			Million BGN			Million BGN	
Total	68431.2	92917.8	35.8	76742.6	107912.8	40.6	-8311.4	-14995.0
EU	45270.6	60583.5	33.8	46332.9	59612.4	28.7	-1062.3	971.1
Austria	1345.5	1849.2	37.4	1870.2	2370.4	26.7	-524.7	-521.2
Belgium	2211.3	2397.4	8.4	1481.3	2027.7	36.9	730.0	369.7
Croatia	636.5	739.9	16.2	370.8	240.4	-35.2	265.7	499.5
Cyprus	274.5	390.3	42.2	149.6	117.4	-21.5	124.9	272.9
Czechia	1489.0	1526.5	2.5	1890.4	2402.3	27.1	-401.4	-875.8
Denmark	645.0	439.1	-31.9	348.7	463.0	32.8	296.3	-23.9
Estonia	68.3	131.5	92.5	87.4	89.8	2.7	-19.1	41.7
Finland	151.7	213.0	40.4	166.2	224.8	35.3	-14.5	-11.8
France	2478.3	3080.3	24.3	2016.5	2351.1	16.6	461.8	729.2
Germany	10135.1	13083.4	29.1	9391.5	11663.9	24.2	743.6	1419.5
Greece	4744.0	6053.4	27.6	4209.3	6347.9	50.8	534.7	-294.5
Hungary	1249.7	1636.8	31.0	2805.8	3392.1	20.9	-1556.1	-1755.3
Ireland	128.0	215.2	68.1	497.6	427.3	-14.1	-369.6	-212.1
Italy	5128.0	6974.1	36.0	5059.2	6443.4	27.4	68.8	530.7
Latvia	75.5	100.4	33.0	62.0	111.0	79.0	13.5	-10.6
Lithuania	170.8	274.3	60.6	176.0	238.3	35.4	-5.2	36.0
Luxembourg	110.5	21.6	-80.5	107.9	87.7	-18.7	2.6	-66.1
Malta	56.5	33.3	-41.1	27.6	38.1	38.0	28.9	-4.8
Netherlands	1703.2	2450.4	43.9	3252.6	4453.3	36.9	-1549.4	-2002.9
Poland	1716.8	2098.0	22.2	2738.5	3572.2	30.4	-1021.7	-1474.2
Portugal	251.0	239.3	-4.7	240.2	231.1	-3.8	10.8	8.2
Romania	6864.9	9444.9	37.6	5784.5	7384.8	27.7	1080.4	2060.1
Slovakia	565.9	879.1	55.3	958.6	1104.9	15.3	-392.7	-225.8
Slovenia	419.9	517.2	23.2	570.6	798.5	39.9	-150.7	-281.3
Spain	1860.7	2433.6	30.8	1448.6	2192.7	51.4	412.1	240.9
Sweden	533.0	697.6	30.9	485.1	690.6	42.4	47.9	7.0
Not specified	257.0	2663.7	936.5	136.2	147.7	8.4	120.8	2516.0

¹ Partner country:

- In case of exports (or dispatches) is the country (or Member State) of final destination of the goods.
- In case of imports (or arrivals) is the country (or Member State) of consignment of the goods.

Table 3

Exports, imports and trade balance by groups of countries and main partner countries¹ of Bulgaria in 2021 and 2022

(Continued)

Countries and groups of countries	Exports - FOB			Imports - CIF			Trade balance - FOB/CIF	
	2021	2022	Change compared to the same period of the previous year - %	2021	2022	Change compared to the same period of the previous year - %	2021	2022
	Million BGN			Million BGN			Million BGN	
Non-EU countries	23160.6	32334.3	39.6	30409.7	48300.4	58.8	-7249.1	-15966.1
CIS ²	1322.2	1715.0	29.7	6267.7	12933.0	106.3	-4945.5	-11218.0
of which:								
Kazakhstan	76.0	109.9	44.6	3.8	57.5	1413.2	72.2	52.4
Russian Federation	853.8	956.3	12.0	5827.8	11702.3	100.8	-4974.0	-10746.0
OECD ³	9110.8	11327.7	24.3	9944.4	13980.2	40.6	-833.6	-2652.5
of which:								
Canada	140.6	208.0	47.9	242.9	225.6	-7.1	-102.3	-17.6
Chile	32.5	41.5	27.7	539.4	288.6	-46.5	-506.9	-247.1
Israel	379.4	587.6	54.9	336.3	116.3	-65.4	43.1	471.3
Japan	106.2	149.7	41.0	400.8	458.0	14.3	-294.6	-308.3
Korea, Republic of	423.1	258.9	-38.8	277.2	388.8	40.3	145.9	-129.9
Türkiye	4206.9	5553.1	32.0	6011.8	9095.8	51.3	-1804.9	-3542.7
United Kingdom ⁴	1257.0	1452.0	15.5	611.7	862.6	41.0	645.3	589.4
United States	1699.0	2068.1	21.7	558.4	1586.3	184.1	1140.6	481.8
EFTA ⁵	566.8	733.5	29.4	623.1	700.0	12.3	-56.3	33.5
of which:								
Norway	104.3	112.7	8.1	57.4	70.9	23.5	46.9	41.8
Switzerland	458.1	608.5	32.8	561.0	623.0	11.1	-102.9	-14.5

¹ Partner country:

- In case of exports (or dispatches) is the country (or Member State) of final destination of the goods.

- In case of imports (or arrivals) is the country (or Member State) of consignment of the goods.

² CIS includes: Azerbaijan; Armenia; Belarus; Kazakhstan; Kyrgyz Republic; Moldova, Republic of; Russian Federation; Tajikistan; Turkmenistan and Uzbekistan.

³ OECD includes: Australia; Virgin Islands (US); United States; Iceland; Canada; Chile; Mexico; New Zealand; Norway; Korea, Republic of; Türkiye; United Kingdom; Switzerland; Japan and Israel.

⁴ The United Kingdom includes: Northern Ireland; Great Britain; Channel Islands and Isle of Man.

⁵ EFTA includes: Norway; Switzerland; Iceland and Liechtenstein.

Table 3

Exports, imports and trade balance by groups of countries and main partner countries¹ of Bulgaria in 2021 and 2022

(Continued and end)

Countries and groups of countries	Exports - FOB			Imports - CIF			Trade balance - FOB/CIF	
	2021	2022	Change compared to the same period of the previous year - %	2021	2022	Change compared to the same period of the previous year - %	2021	2022
	Million BGN			Million BGN			Million BGN	
Countries not included in the upper groups								
Albania	222.6	256.2	15.1	79.1	108.6	37.3	143.5	147.6
Bosnia and Herzegovina	180.7	192.2	6.4	58.0	53.0	-8.6	122.7	139.2
Brazil	91.5	190.7	108.4	356.6	599.3	68.1	-265.1	-408.6
China	2198.7	1539.0	-30.0	4148.2	6251.4	50.7	-1949.5	-4712.4
Egypt	465.9	1266.8	171.9	513.8	482.9	-6.0	-47.9	783.9
Georgia	380.0	489.4	28.8	724.1	1018.5	40.7	-344.1	-529.1
India	277.6	741.9	167.3	392.5	477.7	21.7	-114.9	264.2
Indonesia	129.2	171.3	32.6	59.7	535.7	797.3	69.5	-364.4
Iran, Islamic Republic of	166.9	249.6	49.6	116.6	167.0	43.2	50.3	82.6
Peru	9.0	33.1	267.8	617.2	404.4	-34.5	-608.2	-371.3
Republic of North Macedonia	1124.6	1522.0	35.3	728.0	876.8	20.4	396.6	645.2
Serbia	1453.8	2286.6	57.3	1498.4	1861.0	24.2	-44.6	425.6
Singapore	56.3	49.5	-12.1	80.1	111.6	39.3	-23.8	-62.1
South Africa	165.7	472.5	185.2	78.2	230.1	194.2	87.5	242.4
Syrian Arab Republic	8.5	9.0	5.9	3.9	10.5	169.2	4.6	-1.5
Taiwan	74.9	115.5	54.2	332.6	486.1	46.2	-257.7	-370.6
Tunisia	427.3	440.2	3.0	38.8	78.8	103.1	388.5	361.4
Ukraine	793.7	2252.6	183.8	1634.5	3411.8	108.7	-840.8	-1159.2
United Arab Emirates	157.9	274.5	73.8	71.6	95.7	33.7	86.3	178.8
Viet Nam	190.2	100.4	-47.2	190.9	335.0	75.5	-0.7	-234.6

¹ Partner country:

- In case of exports (or dispatches) is the country (or Member State) of final destination of the goods.
- In case of imports (or arrivals) is the country (or Member State) of consignment of the goods.

Table 4

Exports, imports and trade balance of Bulgaria by sections of SITC, rev. 4 in 2021 and 2022

Sections by SITC	Exports - FOB			Imports - CIF			Trade balance - FOB/CIF	
	2021	2022	Change compared to the same period of the previous year - %	2021	2022	Change compared to the same period of the previous year - %	2021	2022
	Million BGN			Million BGN			Million BGN	
Total	68431.2	92917.8	35.8	76742.6	107912.8	40.6	-8311.4	-14995.0
of which EU ¹	45270.6	60583.5	33.8	46332.9	59612.4	28.7	-1062.3	971.1
Food and live animals	8049.0	10064.7	25.0	5802.1	7526.5	29.7	2246.9	2538.2
of which EU	4788.4	5605.4	17.1	4467.0	5647.3	26.4	321.4	-41.9
Beverages and tobacco	634.8	636.2	0.2	1256.3	1468.1	16.9	-621.5	-831.9
of which EU	431.8	389.0	-9.9	957.8	1153.8	20.5	-526.0	-764.8
Crude materials, inedible (except fuel)	5218.5	5281.9	1.2	6811.9	9612.0	41.1	-1593.4	-4330.1
of which EU	3097.9	3266.6	5.4	1863.4	2202.4	18.2	1234.5	1064.2
Mineral fuel, lubricants and related materials	4114.2	10658.8	159.1	8792.4	18077.0	105.6	-4678.2	-7418.2
of which EU	1973.7	3437.9	74.2	2625.5	4134.0	57.5	-651.8	-696.1
Animal and vegetable oils, fats and waxes	1363.1	3369.1	147.2	507.9	1636.0	222.1	855.2	1733.1
of which EU	947.0	2139.8	126.0	359.1	653.0	81.8	587.9	1486.8
Chemical and related products n.e.c.	7989.1	10995.4	37.6	11845.5	15269.0	28.9	-3856.4	-4273.6
of which EU	5175.9	7145.9	38.1	8844.8	11036.3	24.8	-3668.9	-3890.4
Manufactured goods classified chiefly by material	15921.9	20014.9	25.7	13223.4	17258.1	30.5	2698.5	2756.8
of which EU	10543.4	14869.2	41.0	6892.7	8856.6	28.5	3650.7	6012.6
Machinery and transport equipment	15578.5	19095.4	22.6	21379.2	28570.5	33.6	-5800.7	-9475.1
of which EU	11701.2	14081.6	20.3	15517.0	20216.0	30.3	-3815.8	-6134.4
Miscellaneous manufactured articles	9305.3	12673.4	36.2	6546.5	8394.2	28.2	2758.8	4279.2
of which EU	6444.0	9605.2	49.1	4294.8	5628.1	31.0	2149.2	3977.1
Commodities and transactions n.e.c.	256.8	128.0	-50.2	577.4	101.4	-82.4	-320.6	26.6
of which EU	167.3	42.9	-74.4	510.8	84.9	-83.4	-343.5	-42.0