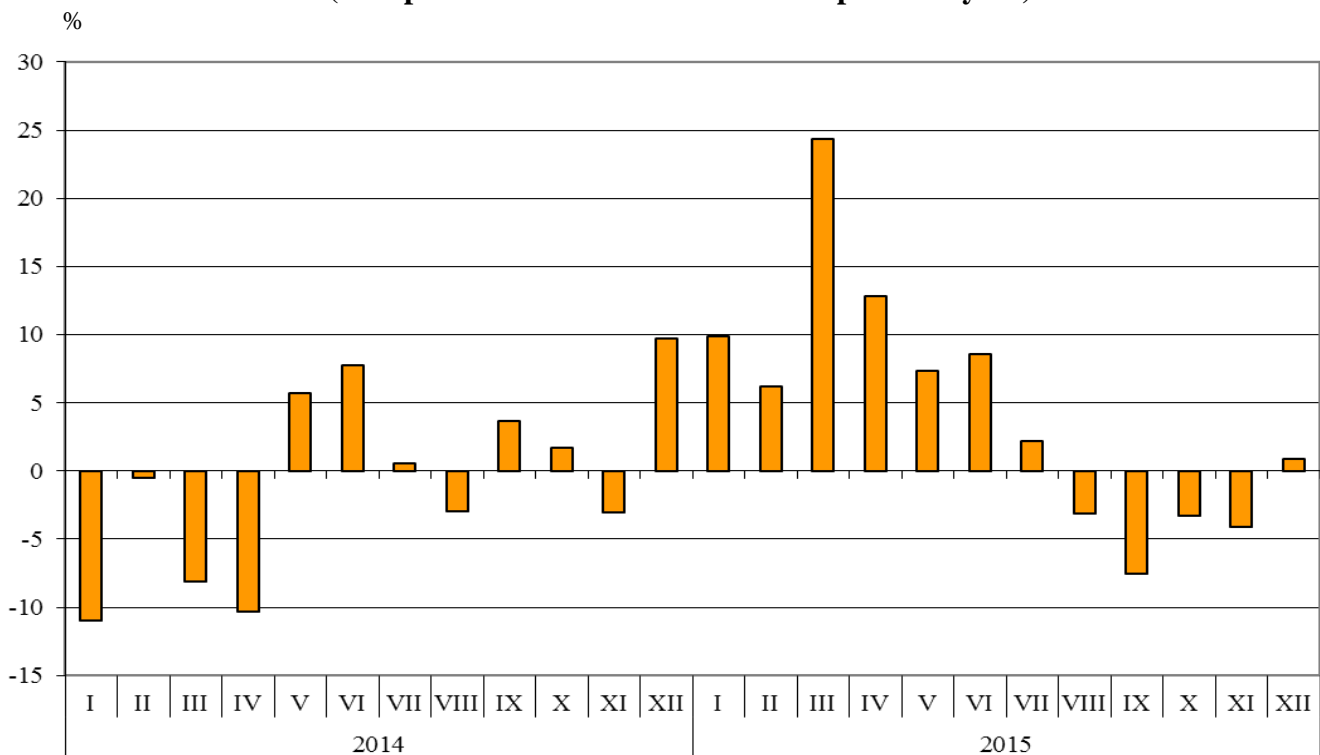




## FOREIGN TRADE OF BULGARIA IN 2015 - FINAL DATA

In 2015 the **exported goods** were for 44 949.5 Million BGN and compared to 2014 the exports increased by 4.0% (Annex, Table 1 and 2). In comparing monthly data for 2015 with data for the corresponding month of the previous year the highest growth in exports was observed in March (24.4%), while the largest fall - in September (7.5%).

**Figure 1. Nominal value<sup>1</sup> change of exports in the period 2014 - 2015  
(Compared to the same month of the previous year)**

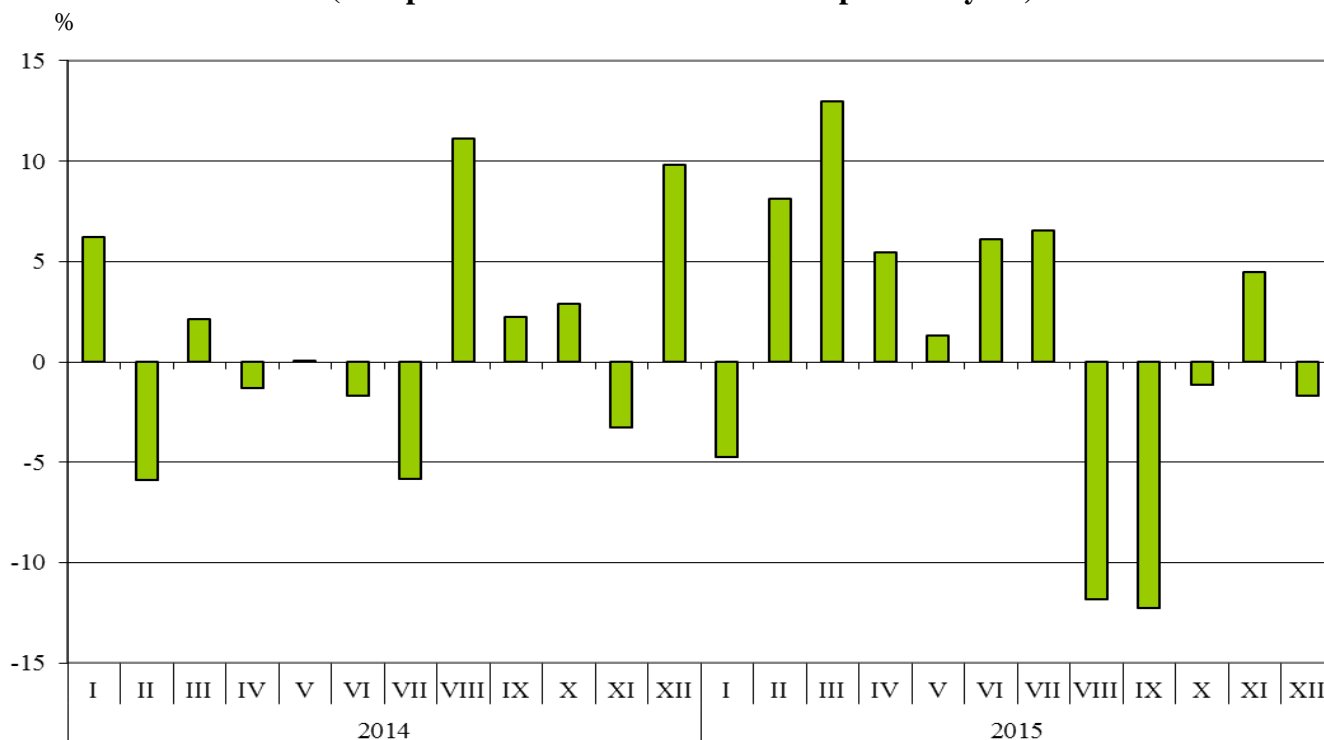


**The imported goods** in 2015 were for 51 549.0 Million BGN (at CIF prices) or 0.9% more than in the previous year (Annex, Table 1 and 2). In comparing monthly data for 2015 with data for the corresponding month of 2014 the largest growth in imports was observed in March (13.0%) and the most notable fall was reported in September (12.3%).

<sup>1</sup> Value changes at current prices.



**Figure 2. Nominal value<sup>1</sup> change of imports in the period 2014 - 2015  
(Compared to the same month of the previous year)**



**Foreign trade balance** (exports FOB - import CIF) was negative in 2015 and amounted to 6 599.5 Million BGN, which was 1 264.4 Million BGN less than the balance in 2014 (Annex, Table 1 and 2). At FOB/FOB prices (after elimination of transport and insurance costs on imports) the negative balance in 2015 added up to 4 064.6 Million BGN.

The **exports** of Bulgaria in 2015 distributed according to the **Standard International Trade Classification** showed that the largest growth was recorded in the section 'Chemical and related products n.e.c.' (12.5%). The most notable fall was reported in the section 'Mineral fuel, lubricants and related materials' (13.4%) (Annex, Table 4).

In **imports** the largest growth was recorded in the section: 'Miscellaneous manufactured articles'<sup>2</sup> (13.1%). The most notable fall was reported in the section 'Mineral fuel, lubricants and related materials' (21.0%).

<sup>1</sup> Value changes at current prices.

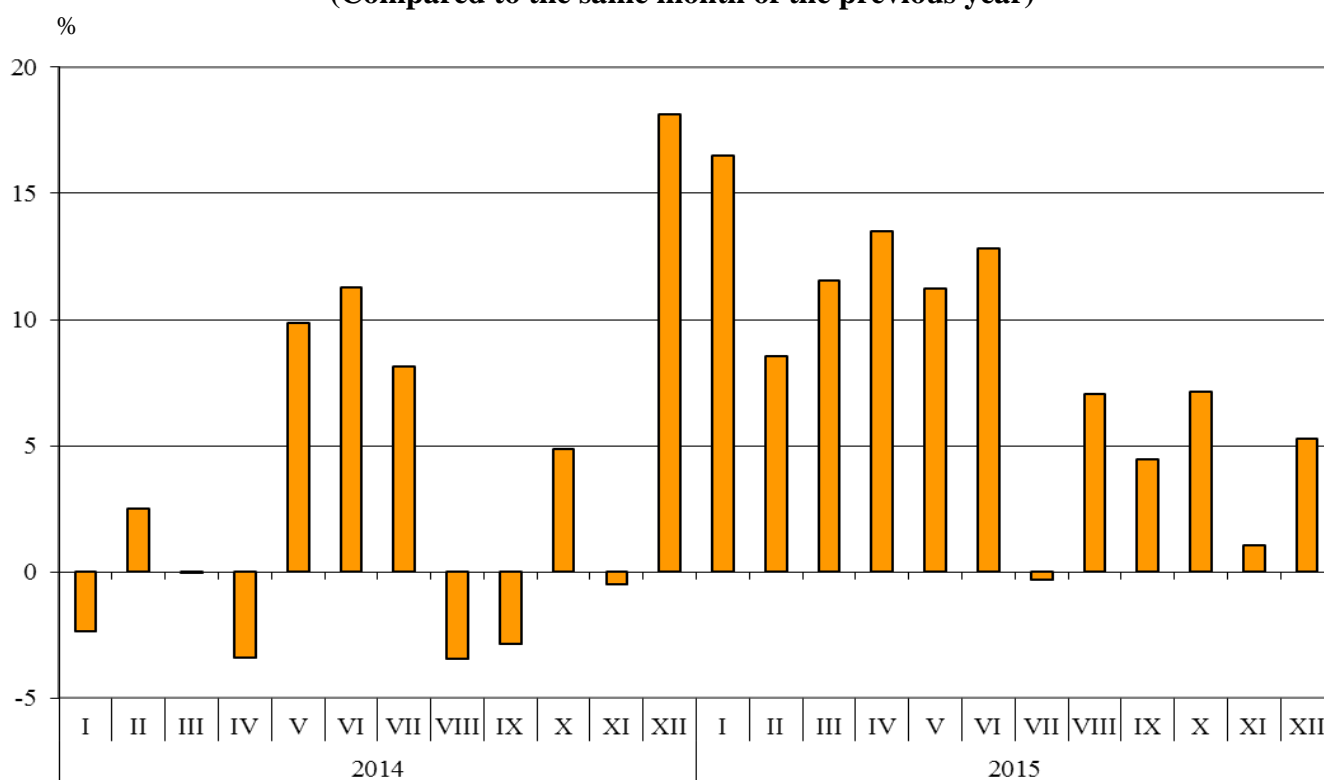
<sup>2</sup> The section includes the following divisions: Prefabricated buildings; sanitary, plumbing, heating and lighting fixtures and fittings, Furniture and parts thereof; bedding, mattresses, mattress supports, cushions and similar stuffed furnishings, Travel goods, handbags and similar containers, Articles of apparel and clothing accessories, Footwear, Professional, scientific and controlling instruments and apparatus, Photographic apparatus, equipment and supplies and optical goods, n.e.s.; watches and clocks, Miscellaneous manufactured articles, n.e.s.



## Bulgarian trade with EU

In 2015 the **exports** of Bulgaria to the **EU countries** increased by 7.9% compared to the previous year and amounted to 29 049.4 Million BGN (Annex, Table 1 and 2). Main trade partners of Bulgaria were Germany, Italy, Romania, Greece, France and Belgium which accounted for 69.0% from the exports to the EU (Annex, Table 3).

**Figure 3. Nominal value<sup>1</sup> change of exports to EU in the period 2014 - 2015**  
(Compared to the same month of the previous year)

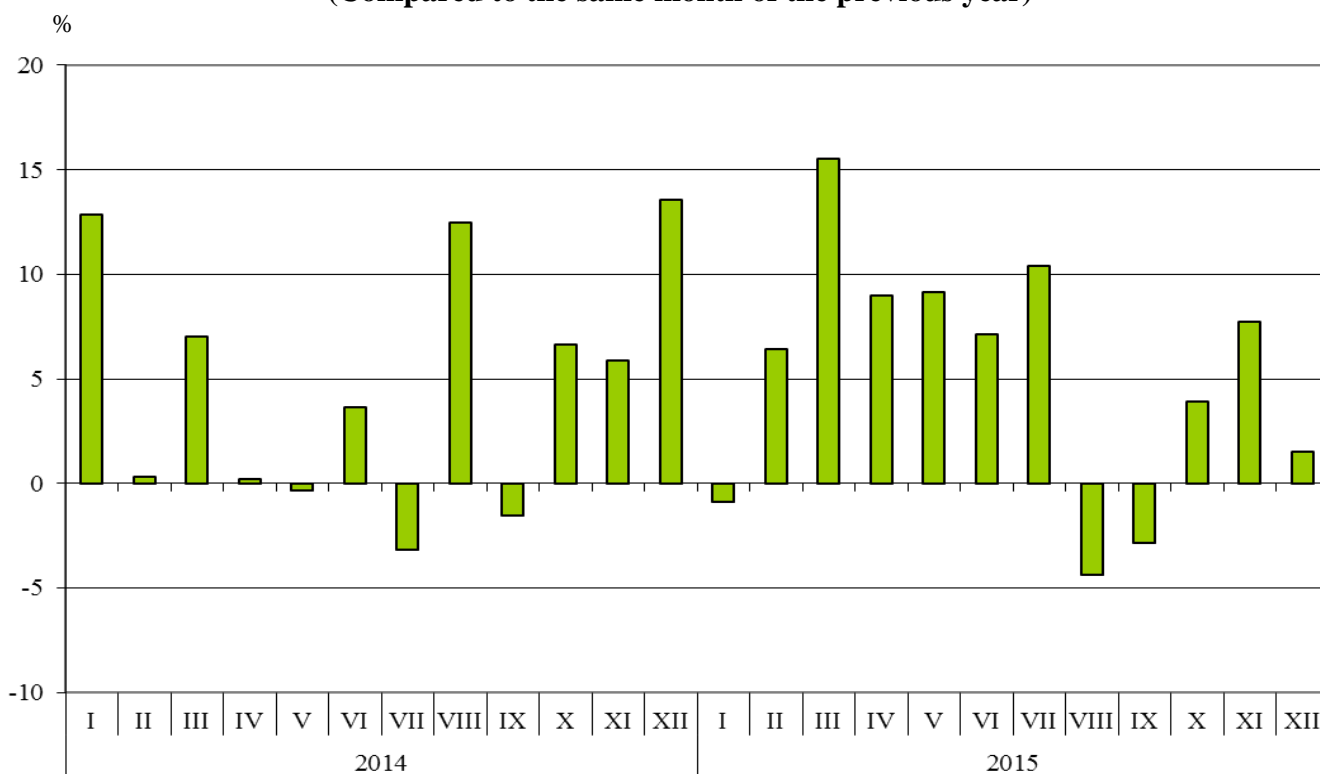


The Bulgarian **imports** from the **EU countries** in 2015 increased by 5.2% compared to the previous year and added up to 33 157.2 Million BGN (Annex, Table 1 and 2). The largest amounts were reported for the goods imported from Germany, Italy, Romania, Greece and Spain.

<sup>1</sup> Value changes at current prices.



**Figure 4. Nominal value<sup>1</sup> change of imports from EU in the period 2014 - 2015  
(Compared to the same month of the previous year)**



**Foreign trade balance** (exports FOB - import CIF) of Bulgaria with the **EU countries** was negative and amounted to 4 107.8 Million BGN in 2015 (Annex, Table 1).

The **exports** of Bulgaria to the **EU** distributed according to the **Standard International Trade Classification** showed that in 2015 compared to 2014 the largest increase was observed in exports from the section 'Chemical and related products n.e.c.' (22.5%) (Annex, Table 4).

The largest growth in **imports** from the **EU** was observed in section 'Beverages and tobacco' (25.3%).

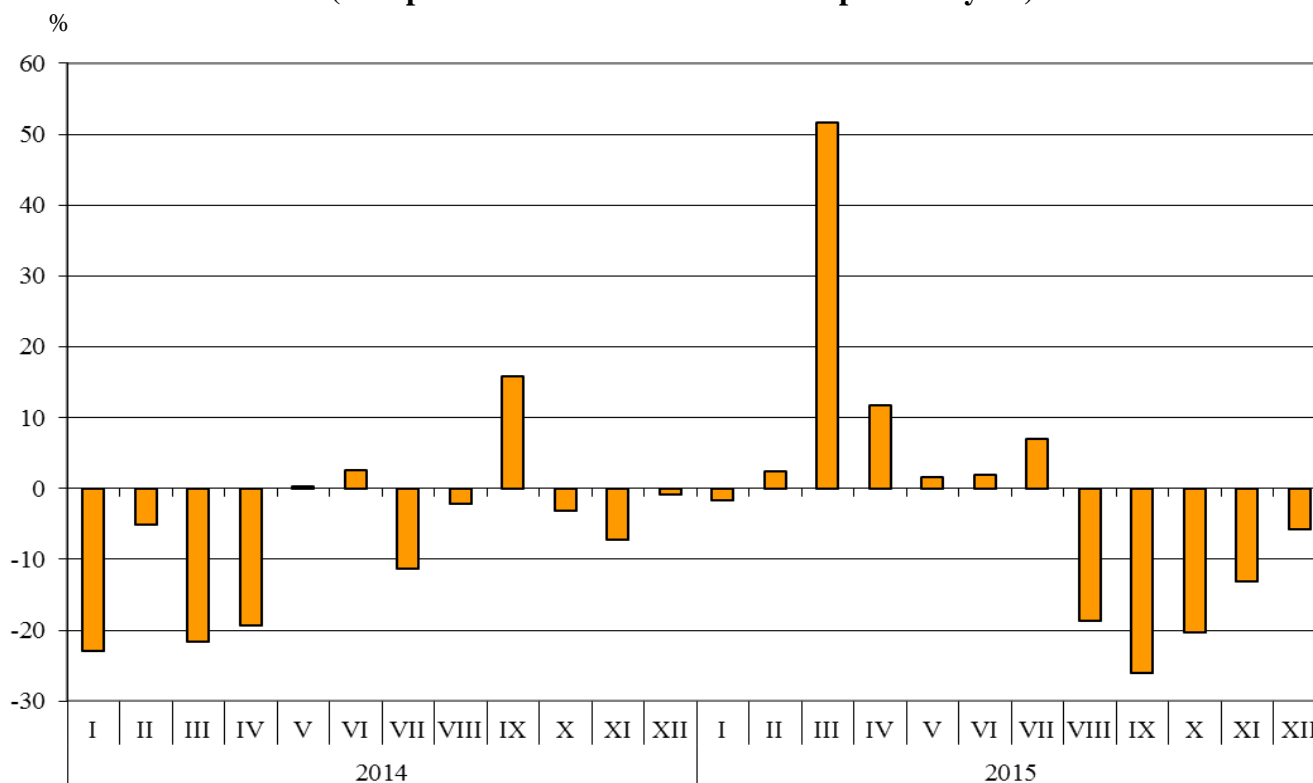
<sup>1</sup> Value changes at current prices.



## Bulgarian trade with third countries

In 2015 the Bulgarian **exports to third countries** decreased by 2.5% compared to the previous year and added up to 15 900.1 Million BGN (Annex, Table 1 and 2). Main trade partners of Bulgaria were Turkey, China, Serbia, Russian Federation and Former Yugoslav Republic of Macedonia which accounted for 46.1% of the total exports to non EU countries (Annex, Table.3).

**Figure 5. Nominal value<sup>1</sup> change of exports to non EU countries  
in the period 2014 - 2015  
(Compared to the same month of the previous year)**

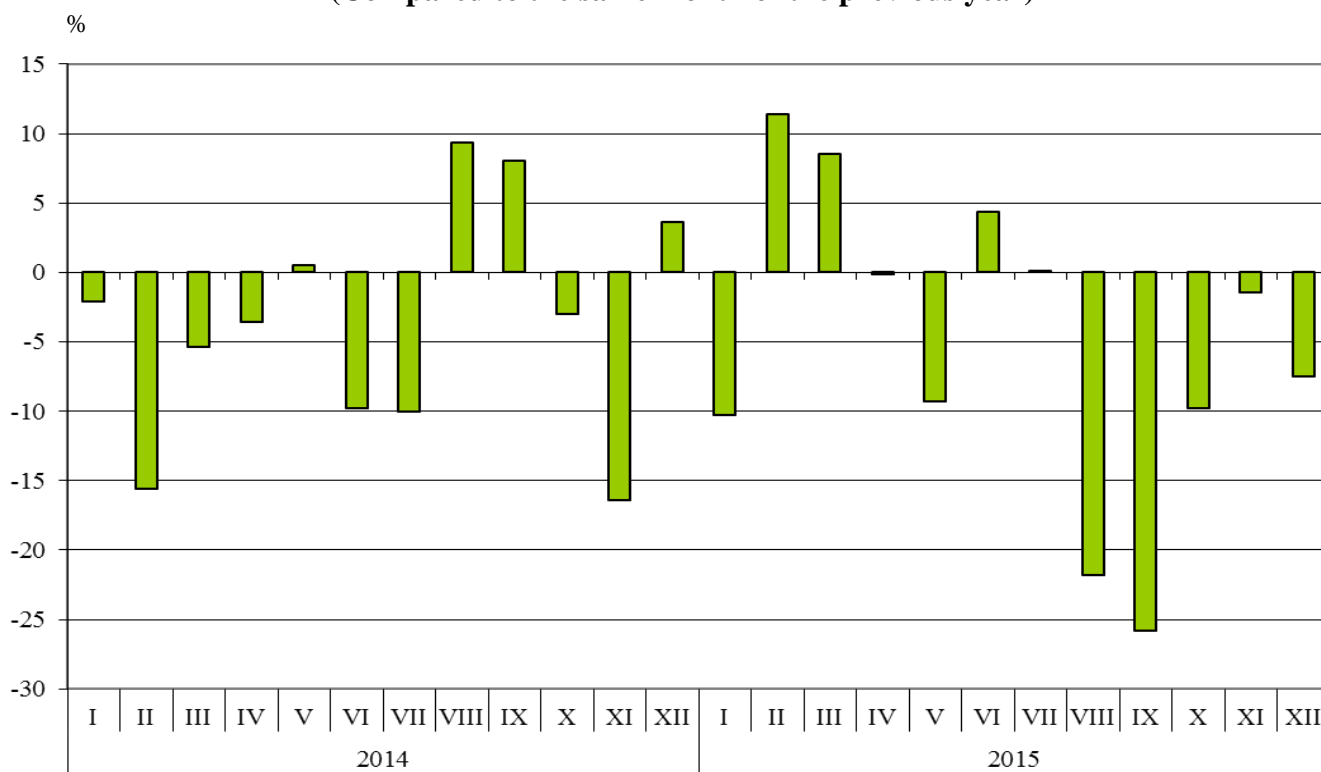


Bulgarian **imports from third countries** in 2015 decreased by 6.1%, compared to the previous year, and amounted to 18 391.8 Million BGN (Annex, Table 1 and 2). The largest amounts were reported for the goods imported from Russian Federation, Turkey, China, Ukraine and Serbia.

<sup>1</sup> Value changes at current prices.



**Figure 6. Nominal value<sup>1</sup> change of imports to non EU countries  
 in the period 2014 - 2015  
 (Compared to the same month of the previous year)**



**Foreign trade balance** of Bulgaria (export FOB - import CIF) with **third countries** was negative and added up to 2 491.7 Million BGN in 2015 (Annex, Table 1).

<sup>1</sup> Value changes at current prices.

Exports, imports and trade balance of Bulgaria in 2014 and 2015 by months - final data

(Million BGN)

| Months/Periods       | Exports - FOB  |                |                | Imports - CIF  |                |                | Imports - FOB <sup>1</sup> |                |                | Trade balance - FOB/CIF |                |                | Trade balance - FOB/FOB <sup>1</sup> |                |                |
|----------------------|----------------|----------------|----------------|----------------|----------------|----------------|----------------------------|----------------|----------------|-------------------------|----------------|----------------|--------------------------------------|----------------|----------------|
|                      | Total          | EU             | Non EU         | Total          | EU             | Non EU         | Total                      | EU             | Non EU         | Total                   | EU             | Non EU         | Total                                | EU             | Non EU         |
| I.2014               | 3099.1         | 1970.5         | 1128.6         | 3955.8         | 2333.1         | 1622.7         | 3677.7                     | 2172.5         | 1505.2         | -856.7                  | -362.6         | -494.1         | -578.6                               | -202.0         | -376.6         |
| II.2014              | 3226.8         | 2001.1         | 1225.7         | 3795.4         | 2466.6         | 1328.8         | 3535.1                     | 2306.6         | 1228.5         | -568.6                  | -465.5         | -103.1         | -308.3                               | -305.5         | -2.8           |
| III.2014             | 3193.6         | 2171.8         | 1021.8         | 3935.8         | 2497.8         | 1438.0         | 3687.1                     | 2341.3         | 1345.8         | -742.2                  | -326.0         | -416.2         | -493.5                               | -169.5         | -324.0         |
| <b>I - III.2014</b>  | <b>9519.5</b>  | <b>6143.4</b>  | <b>3376.1</b>  | <b>11687.0</b> | <b>7297.5</b>  | <b>4389.5</b>  | <b>10899.9</b>             | <b>6820.4</b>  | <b>4079.5</b>  | <b>-2167.5</b>          | <b>-1154.1</b> | <b>-1013.4</b> | <b>1380.4</b>                        | <b>-677.0</b>  | <b>-703.4</b>  |
| IV.2014              | 3468.6         | 2117.6         | 1351.0         | 4303.1         | 2630.3         | 1672.8         | 4017.5                     | 2455.1         | 1562.4         | -834.5                  | -512.7         | -321.8         | -548.9                               | -337.5         | -211.4         |
| V.2014               | 3499.0         | 2065.0         | 1434.0         | 4132.0         | 2366.2         | 1765.8         | 3856.8                     | 2213.1         | 1643.7         | -633.0                  | -301.2         | -331.8         | -357.8                               | -148.1         | -209.7         |
| VI.2014              | 3704.8         | 2271.5         | 1433.3         | 4168.0         | 2641.9         | 1526.1         | 3881.1                     | 2464.1         | 1417.0         | -463.2                  | -370.4         | -92.8          | -176.3                               | -192.6         | 16.3           |
| <b>IV - VI.2014</b>  | <b>10672.4</b> | <b>6454.1</b>  | <b>4218.3</b>  | <b>12603.1</b> | <b>7638.4</b>  | <b>4964.7</b>  | <b>11755.4</b>             | <b>7132.3</b>  | <b>4623.1</b>  | <b>-1930.7</b>          | <b>-1184.3</b> | <b>-746.4</b>  | <b>1083.0</b>                        | <b>-678.2</b>  | <b>-404.8</b>  |
| <b>I - VI.2014</b>   | <b>20191.9</b> | <b>12597.5</b> | <b>7594.4</b>  | <b>24290.1</b> | <b>14935.9</b> | <b>9354.2</b>  | <b>22655.3</b>             | <b>13952.7</b> | <b>8702.6</b>  | <b>-4098.2</b>          | <b>-2338.4</b> | <b>-1759.8</b> | <b>2463.4</b>                        | <b>-1355.2</b> | <b>-1108.2</b> |
| VII.2014             | 4016.0         | 2636.7         | 1379.3         | 4397.0         | 2760.6         | 1636.4         | 4100.4                     | 2576.8         | 1523.6         | -381.0                  | -123.9         | -257.1         | -84.4                                | 59.9           | -144.3         |
| VIII.2014            | 3801.9         | 2302.9         | 1499.0         | 4309.1         | 2465.1         | 1844.0         | 4002.5                     | 2291.9         | 1710.6         | -507.2                  | -162.2         | -345.0         | -200.6                               | 11.0           | -211.6         |
| IX.2014              | 3919.0         | 2378.5         | 1540.5         | 4671.3         | 2752.6         | 1918.7         | 4335.2                     | 2564.5         | 1770.7         | -752.3                  | -374.1         | -378.2         | -416.2                               | -186.0         | -230.2         |
| <b>VII - IX.2014</b> | <b>11736.9</b> | <b>7318.1</b>  | <b>4418.8</b>  | <b>13377.4</b> | <b>7978.3</b>  | <b>5399.1</b>  | <b>12438.1</b>             | <b>7433.2</b>  | <b>5004.9</b>  | <b>-1640.5</b>          | <b>-660.2</b>  | <b>-980.3</b>  | <b>-701.2</b>                        | <b>-115.1</b>  | <b>-586.1</b>  |
| <b>I - IX.2014</b>   | <b>31928.8</b> | <b>19915.6</b> | <b>12013.2</b> | <b>37667.5</b> | <b>22914.2</b> | <b>14753.3</b> | <b>35093.4</b>             | <b>21385.9</b> | <b>13707.5</b> | <b>-5738.7</b>          | <b>-2998.6</b> | <b>-2740.1</b> | <b>3164.6</b>                        | <b>-1470.3</b> | <b>-1694.3</b> |
| X.2014               | 4031.0         | 2509.1         | 1521.9         | 4666.1         | 2948.9         | 1717.2         | 4339.5                     | 2746.5         | 1593.0         | -635.1                  | -439.8         | -195.3         | -308.5                               | -237.4         | -71.1          |
| XI.2014              | 3849.1         | 2441.0         | 1408.1         | 4379.3         | 2826.2         | 1553.1         | 4082.5                     | 2633.6         | 1448.9         | -530.2                  | -385.2         | -145.0         | -233.4                               | -192.6         | -40.8          |
| XII.2014             | 3424.6         | 2055.4         | 1369.2         | 4384.5         | 2823.0         | 1561.5         | 4079.1                     | 2625.7         | 1453.4         | -959.9                  | -767.6         | -192.3         | -654.5                               | -570.3         | -84.2          |
| <b>X - XII.2014</b>  | <b>11304.7</b> | <b>7005.5</b>  | <b>4299.2</b>  | <b>13429.9</b> | <b>8598.1</b>  | <b>4831.8</b>  | <b>12501.1</b>             | <b>8005.8</b>  | <b>4495.3</b>  | <b>-2125.2</b>          | <b>-1592.6</b> | <b>-532.6</b>  | <b>1196.4</b>                        | <b>-1000.3</b> | <b>-196.1</b>  |
| <b>I - XII.2014</b>  | <b>43233.5</b> | <b>26921.1</b> | <b>16312.4</b> | <b>51097.4</b> | <b>31512.3</b> | <b>19585.1</b> | <b>47594.5</b>             | <b>29391.7</b> | <b>18202.8</b> | <b>-7863.9</b>          | <b>-4591.2</b> | <b>-3272.7</b> | <b>4361.0</b>                        | <b>-2470.6</b> | <b>-1890.4</b> |

<sup>1</sup> By data of BNB for the transport costs.

Table 1

Exports, imports and trade balance of Bulgaria in 2014 and 2015 by months - final data

(Continued and end)

(Million BGN)

| Months/Periods       | Exports - FOB  |                |                | Imports - CIF  |                |                | Imports - FOB1 |                |                | Trade balance - FOB/CIF |                |                | Trade balance - FOB/FOB <sup>1</sup> |                |                |
|----------------------|----------------|----------------|----------------|----------------|----------------|----------------|----------------|----------------|----------------|-------------------------|----------------|----------------|--------------------------------------|----------------|----------------|
|                      | Total          | EU             | Non EU         | Total          | EU             | Non EU         | Total          | EU             | Non EU         | Total                   | EU             | Non EU         | Total                                | EU             | Non EU         |
| I.2015               | 3404.9         | 2296.0         | 1108.9         | 3767.8         | 2312.0         | 1455.8         | 3579.5         | 2199.6         | 1379.9         | -362.9                  | -16.0          | -346.9         | -174.6                               | 96.4           | -271.0         |
| II.2015              | 3427.4         | 2171.8         | 1255.6         | 4104.7         | 2624.7         | 1480.0         | 3904.3         | 2499.7         | 1404.6         | -677.3                  | -452.9         | -224.4         | -476.9                               | -327.9         | -149.0         |
| III.2015             | 3971.6         | 2422.7         | 1548.9         | 4447.0         | 2886.1         | 1560.9         | 4239.8         | 2753.7         | 1486.1         | -475.4                  | -463.4         | -12.0          | -268.2                               | -331.0         | 62.8           |
| <b>I - III.2015</b>  | <b>10803.9</b> | <b>6890.5</b>  | <b>3913.4</b>  | <b>12319.5</b> | <b>7822.8</b>  | <b>4496.7</b>  | <b>11723.6</b> | <b>7453.0</b>  | <b>4270.6</b>  | <b>-1515.6</b>          | <b>-932.3</b>  | <b>-583.3</b>  | <b>-919.7</b>                        | <b>-562.5</b>  | <b>-357.2</b>  |
| IV.2015              | 3912.2         | 2403.4         | 1508.8         | 4537.2         | 2866.8         | 1670.4         | 4313.3         | 2728.0         | 1585.3         | -625.0                  | -463.4         | -161.6         | -401.1                               | -324.6         | -76.5          |
| V.2015               | 3755.0         | 2297.2         | 1457.8         | 4185.7         | 2583.3         | 1602.4         | 3984.9         | 2464.5         | 1520.4         | -430.7                  | -286.1         | -144.6         | -229.9                               | -167.3         | -62.6          |
| VI.2015              | 4022.8         | 2562.3         | 1460.5         | 4423.1         | 2830.3         | 1592.8         | 4213.6         | 2699.1         | 1514.5         | -400.3                  | -268.0         | -132.3         | -190.8                               | -136.8         | -54.0          |
| <b>IV - VI.2015</b>  | <b>11690.0</b> | <b>7262.9</b>  | <b>4427.1</b>  | <b>13146.0</b> | <b>8280.4</b>  | <b>4865.6</b>  | <b>12511.8</b> | <b>7891.6</b>  | <b>4620.2</b>  | <b>-1456.0</b>          | <b>-1017.5</b> | <b>-438.5</b>  | <b>-821.8</b>                        | <b>-628.7</b>  | <b>-193.1</b>  |
| <b>I - VI.2015</b>   | <b>22493.9</b> | <b>14153.4</b> | <b>8340.5</b>  | <b>25465.5</b> | <b>16103.2</b> | <b>9362.3</b>  | <b>24235.4</b> | <b>15344.6</b> | <b>8890.8</b>  | <b>-2971.6</b>          | <b>-1949.8</b> | <b>-1021.8</b> | <b>1741.5</b>                        | <b>-1191.2</b> | <b>-550.3</b>  |
| VII.2015             | 4105.0         | 2629.0         | 1476.0         | 4685.9         | 3047.1         | 1638.8         | 4455.2         | 2900.6         | 1554.6         | -580.9                  | -418.1         | -162.8         | -350.2                               | -271.6         | -78.6          |
| VIII.2015            | 3682.9         | 2464.8         | 1218.1         | 3798.5         | 2356.9         | 1441.6         | 3617.8         | 2250.3         | 1367.5         | -115.6                  | 107.9          | -223.5         | 65.1                                 | 214.5          | -149.4         |
| IX.2015              | 3623.7         | 2484.2         | 1139.5         | 4098.5         | 2674.4         | 1424.1         | 3905.4         | 2551.3         | 1354.1         | -474.8                  | -190.2         | -284.6         | -281.7                               | -67.1          | -214.6         |
| <b>VII - IX.2015</b> | <b>11411.6</b> | <b>7578.0</b>  | <b>3833.6</b>  | <b>12582.9</b> | <b>8078.4</b>  | <b>4504.5</b>  | <b>11978.4</b> | <b>7702.2</b>  | <b>4276.2</b>  | <b>-1171.3</b>          | <b>-500.4</b>  | <b>-670.9</b>  | <b>-566.8</b>                        | <b>-124.2</b>  | <b>-442.6</b>  |
| <b>I - IX.2015</b>   | <b>33905.5</b> | <b>21731.4</b> | <b>12174.1</b> | <b>38048.4</b> | <b>24181.6</b> | <b>13866.8</b> | <b>36213.8</b> | <b>23046.8</b> | <b>13167.0</b> | <b>-4142.9</b>          | <b>-2450.2</b> | <b>-1692.7</b> | <b>2308.3</b>                        | <b>-1315.4</b> | <b>-992.9</b>  |
| X.2015               | 3899.8         | 2688.2         | 1211.6         | 4613.8         | 3065.0         | 1548.8         | 4391.7         | 2918.4         | 1473.3         | -714.0                  | -376.8         | -337.2         | -491.9                               | -230.2         | -261.7         |
| XI.2015              | 3690.6         | 2466.2         | 1224.4         | 4576.1         | 3045.0         | 1531.1         | 4331.4         | 2904.9         | 1426.5         | -885.5                  | -578.8         | -306.7         | -640.8                               | -438.7         | -202.1         |
| XII.2015             | 3453.6         | 2163.6         | 1290.0         | 4310.7         | 2865.6         | 1445.1         | 4077.2         | 2732.6         | 1344.6         | -857.1                  | -702.0         | -155.1         | -623.6                               | -569.0         | -54.6          |
| <b>X - XII.2015</b>  | <b>11044.0</b> | <b>7318.0</b>  | <b>3726.0</b>  | <b>13500.6</b> | <b>8975.6</b>  | <b>4525.0</b>  | <b>12800.3</b> | <b>8555.9</b>  | <b>4244.4</b>  | <b>-2456.6</b>          | <b>-1657.6</b> | <b>-799.0</b>  | <b>1756.3</b>                        | <b>-1237.9</b> | <b>-518.4</b>  |
| <b>I - XII.2015</b>  | <b>44949.5</b> | <b>29049.4</b> | <b>15900.1</b> | <b>51549.0</b> | <b>33157.2</b> | <b>18391.8</b> | <b>49014.1</b> | <b>31602.7</b> | <b>17411.4</b> | <b>-6599.5</b>          | <b>-4107.8</b> | <b>-2491.7</b> | <b>4064.6</b>                        | <b>-2553.3</b> | <b>-1511.3</b> |

<sup>1</sup> By data of BNB for the transport costs.





Table 2

Value changes of exports and imports of Bulgaria in 2015 compared to  
the same period of the previous year

(Per cent)

| Months/Periods  | Exports - FOB |             |              | Imports - CIF |            |              | Imports - FOB |             |              |
|-----------------|---------------|-------------|--------------|---------------|------------|--------------|---------------|-------------|--------------|
|                 | Total         | EU          | Non EU       | Total         | EU         | Non EU       | Total         | EU          | Non EU       |
| I               | 9.9           | 16.5        | -1.7         | -4.8          | -0.9       | -10.3        | -2.7          | 1.2         | -8.3         |
| II              | 6.2           | 8.5         | 2.4          | 8.1           | 6.4        | 11.4         | 10.4          | 8.4         | 14.3         |
| III             | 24.4          | 11.6        | 51.6         | 13.0          | 15.5       | 8.5          | 15.0          | 17.6        | 10.4         |
| <b>I - III</b>  | <b>13.5</b>   | <b>12.2</b> | <b>15.9</b>  | <b>5.4</b>    | <b>7.2</b> | <b>2.4</b>   | <b>7.6</b>    | <b>9.3</b>  | <b>4.7</b>   |
| IV              | 12.8          | 13.5        | 11.7         | 5.4           | 9.0        | -0.1         | 7.4           | 11.1        | 1.5          |
| V               | 7.3           | 11.2        | 1.7          | 1.3           | 9.2        | -9.3         | 3.3           | 11.4        | -7.5         |
| VI              | 8.6           | 12.8        | 1.9          | 6.1           | 7.1        | 4.4          | 8.6           | 9.5         | 6.9          |
| <b>IV - VI</b>  | <b>9.5</b>    | <b>12.5</b> | <b>4.9</b>   | <b>4.3</b>    | <b>8.4</b> | <b>-2.0</b>  | <b>6.4</b>    | <b>10.6</b> | <b>-0.1</b>  |
| <b>I - VI</b>   | <b>11.4</b>   | <b>12.4</b> | <b>9.8</b>   | <b>4.8</b>    | <b>7.8</b> | <b>0.1</b>   | <b>7.0</b>    | <b>10.0</b> | <b>2.2</b>   |
| VII             | 2.2           | -0.3        | 7.0          | 6.6           | 10.4       | 0.1          | 8.7           | 12.6        | 2.0          |
| VIII            | -3.1          | 7.0         | -18.7        | -11.8         | -4.4       | -21.8        | -9.6          | -1.8        | -20.1        |
| IX              | -7.5          | 4.4         | -26.0        | -12.3         | -2.8       | -25.8        | -9.9          | -0.5        | -23.5        |
| <b>VII - IX</b> | <b>-2.8</b>   | <b>3.6</b>  | <b>-13.2</b> | <b>-5.9</b>   | <b>1.3</b> | <b>-16.6</b> | <b>-3.7</b>   | <b>3.6</b>  | <b>-14.6</b> |
| <b>I - IX</b>   | <b>6.2</b>    | <b>9.1</b>  | <b>1.3</b>   | <b>1.0</b>    | <b>5.5</b> | <b>-6.0</b>  | <b>3.2</b>    | <b>7.8</b>  | <b>-3.9</b>  |
| X               | -3.3          | 7.1         | -20.4        | -1.1          | 3.9        | -9.8         | 1.2           | 6.3         | -7.5         |
| XI              | -4.1          | 1.0         | -13.0        | 4.5           | 7.7        | -1.4         | 6.1           | 10.3        | -1.5         |
| XII             | 0.8           | 5.3         | -5.8         | -1.7          | 1.5        | -7.5         | 0.0           | 4.1         | -7.5         |
| <b>X - XII</b>  | <b>-2.3</b>   | <b>4.5</b>  | <b>-13.3</b> | <b>0.5</b>    | <b>4.4</b> | <b>-6.3</b>  | <b>2.4</b>    | <b>6.9</b>  | <b>-5.6</b>  |
| <b>I - XII</b>  | <b>4.0</b>    | <b>7.9</b>  | <b>-2.5</b>  | <b>0.9</b>    | <b>5.2</b> | <b>-6.1</b>  | <b>3.0</b>    | <b>7.5</b>  | <b>-4.3</b>  |



Table 3

**Exports, imports and trade balance by groups of countries and main partner countries<sup>1</sup> of Bulgaria in 2014 and 2015**

| Countries and groups of countries | Exports - FOB  |                |                                                             | Imports - CIF  |                |                                                             | Trade balance - FOB/CIF |                |
|-----------------------------------|----------------|----------------|-------------------------------------------------------------|----------------|----------------|-------------------------------------------------------------|-------------------------|----------------|
|                                   | 2014           | 2015           | Change compared to the same period of the previous year - % | 2014           | 2015           | Change compared to the same period of the previous year - % | 2014                    | 2015           |
|                                   | Million BGN    |                |                                                             | Million BGN    |                |                                                             | Million BGN             |                |
| <b>Total</b>                      | <b>43233.5</b> | <b>44949.5</b> | <b>4.0</b>                                                  | <b>51097.4</b> | <b>51549.0</b> | <b>0.9</b>                                                  | <b>-7863.9</b>          | <b>-6599.5</b> |
| <b>EU</b>                         | <b>26921.1</b> | <b>29049.4</b> | <b>7.9</b>                                                  | <b>31512.3</b> | <b>33157.2</b> | <b>5.2</b>                                                  | <b>-4591.2</b>          | <b>-4107.8</b> |
| Austria                           | 741.1          | 804.0          | 8.5                                                         | 1451.6         | 1389.9         | -4.3                                                        | -710.5                  | -585.9         |
| Belgium                           | 1766.9         | 1658.0         | -6.2                                                        | 1052.4         | 1186.5         | 12.7                                                        | 714.5                   | 471.5          |
| Croatia                           | 182.1          | 187.1          | 2.7                                                         | 88.4           | 116.5          | 31.8                                                        | 93.7                    | 70.6           |
| Cyprus                            | 194.0          | 299.5          | 54.4                                                        | 69.2           | 79.6           | 15.0                                                        | 124.8                   | 219.9          |
| Czech Republic                    | 625.3          | 769.8          | 23.1                                                        | 1148.5         | 1095.2         | -4.6                                                        | -523.2                  | -325.4         |
| Denmark                           | 204.7          | 245.5          | 19.9                                                        | 207.8          | 243.6          | 17.2                                                        | -3.1                    | 1.9            |
| Estonia                           | 41.5           | 40.7           | -1.9                                                        | 35.5           | 22.8           | -35.8                                                       | 6.0                     | 17.9           |
| Finland                           | 150.2          | 117.4          | -21.8                                                       | 94.5           | 118.4          | 25.3                                                        | 55.7                    | -1.0           |
| France                            | 1854.2         | 1908.8         | 2.9                                                         | 1552.6         | 1629.8         | 5.0                                                         | 301.6                   | 279.0          |
| Germany                           | 5193.1         | 5659.6         | 9.0                                                         | 6284.1         | 6640.6         | 5.7                                                         | -1091.0                 | -981.0         |
| Greece                            | 2898.0         | 2954.7         | 2.0                                                         | 2614.9         | 2479.7         | -5.2                                                        | 283.1                   | 475.0          |
| Hungary                           | 581.9          | 685.4          | 17.8                                                        | 1725.4         | 1909.4         | 10.7                                                        | -1143.5                 | -1224.0        |
| Ireland                           | 140.3          | 58.5           | -58.3                                                       | 151.6          | 159.1          | 4.9                                                         | -11.3                   | -100.6         |
| Italy                             | 3875.1         | 4180.2         | 7.9                                                         | 3600.3         | 3902.5         | 8.4                                                         | 274.8                   | 277.7          |
| Latvia                            | 50.3           | 50.0           | -0.6                                                        | 24.2           | 56.4           | 133.1                                                       | 26.1                    | -6.4           |
| Lithuania                         | 91.1           | 97.4           | 6.9                                                         | 85.1           | 86.1           | 1.2                                                         | 6.0                     | 11.3           |
| Luxembourg                        | 5.2            | 10.6           | 103.8                                                       | 148.7          | 155.9          | 4.8                                                         | -143.5                  | -145.3         |
| Malta                             | 74.1           | 100.9          | 36.2                                                        | 138.5          | 19.8           | -85.7                                                       | -64.4                   | 81.1           |
| Netherlands                       | 967.9          | 1057.1         | 9.2                                                         | 1407.5         | 1727.3         | 22.7                                                        | -439.6                  | -670.2         |
| Poland                            | 888.1          | 1035.0         | 16.5                                                        | 1391.7         | 1608.7         | 15.6                                                        | -503.6                  | -573.7         |
| Portugal                          | 203.8          | 185.2          | -9.1                                                        | 102.6          | 109.2          | 6.4                                                         | 101.2                   | 76.0           |
| Romania                           | 3419.0         | 3691.8         | 8.0                                                         | 3489.1         | 3494.3         | 0.1                                                         | -70.1                   | 197.5          |
| Slovakia                          | 313.9          | 330.7          | 5.4                                                         | 609.4          | 741.0          | 21.6                                                        | -295.5                  | -410.3         |
| Slovenia                          | 242.2          | 360.7          | 48.9                                                        | 345.8          | 341.3          | -1.3                                                        | -103.6                  | 19.4           |
| Spain                             | 904.2          | 1038.3         | 14.8                                                        | 2459.4         | 2362.9         | -3.9                                                        | -1555.2                 | -1324.6        |
| Sweden                            | 273.1          | 297.3          | 8.9                                                         | 292.8          | 318.0          | 8.6                                                         | -19.7                   | -20.7          |
| United Kingdom                    | 956.4          | 1146.4         | 19.9                                                        | 868.8          | 942.4          | 8.5                                                         | 87.6                    | 204.0          |
| Not specified                     | 83.4           | 78.8           | -5.5                                                        | 71.9           | 220.3          | 206.4                                                       | 11.5                    | -141.5         |

<sup>1</sup> Partner country:

- In case of exports (or dispatches) is the country (or Member State) of final destination of the goods.
- In case of imports (or arrivals) is the country (or Member State) of consignment of the goods.



Table 3

**Exports, imports and trade balance by groups of countries and main partner countries<sup>1</sup> of Bulgaria in 2014 and 2015**

(Continued)

| Countries and groups of countries | Exports - FOB  |                |                                                             | Imports - CIF  |                |                                                             | Trade balance - FOB/CIF |                |
|-----------------------------------|----------------|----------------|-------------------------------------------------------------|----------------|----------------|-------------------------------------------------------------|-------------------------|----------------|
|                                   | 2014           | 2015           | Change compared to the same period of the previous year - % | 2014           | 2015           | Change compared to the same period of the previous year - % | 2014                    | 2015           |
|                                   | Million BGN    |                |                                                             | Million BGN    |                |                                                             | Million BGN             |                |
| <b>Non EU countries</b>           | <b>16312.4</b> | <b>15900.1</b> | <b>-2.5</b>                                                 | <b>19585.1</b> | <b>18391.8</b> | <b>-6.1</b>                                                 | <b>-3272.7</b>          | <b>-2491.7</b> |
| <b>CIS<sup>2</sup></b>            | <b>1881.7</b>  | <b>1431.1</b>  | <b>-23.9</b>                                                | <b>9047.1</b>  | <b>7308.1</b>  | <b>-19.2</b>                                                | <b>-7165.4</b>          | <b>-5877.0</b> |
| of which:                         |                |                |                                                             |                |                |                                                             |                         |                |
| Kazakhstan                        | 67.9           | 42.9           | -36.8                                                       | 70.2           | 48.8           | -30.5                                                       | -2.3                    | -5.9           |
| Russian Federation                | 1030.4         | 783.6          | -24.0                                                       | 7751.2         | 6201.9         | -20.0                                                       | -6720.8                 | -5418.3        |
| Ukraine                           | 372.3          | 313.9          | -15.7                                                       | 1038.3         | 916.2          | -11.8                                                       | -666.0                  | -602.3         |
| <b>OECD<sup>3</sup></b>           | <b>5558.5</b>  | <b>5466.7</b>  | <b>-1.7</b>                                                 | <b>4386.3</b>  | <b>4576.3</b>  | <b>4.3</b>                                                  | <b>1172.2</b>           | <b>890.4</b>   |
| of which:                         |                |                |                                                             |                |                |                                                             |                         |                |
| Canada                            | 78.0           | 80.9           | 3.7                                                         | 60.7           | 54.6           | -10.0                                                       | 17.3                    | 26.3           |
| Israel                            | 184.4          | 189.2          | 2.6                                                         | 133.0          | 73.3           | -44.9                                                       | 51.4                    | 115.9          |
| Japan                             | 55.7           | 75.7           | 35.9                                                        | 164.0          | 165.3          | 0.8                                                         | -108.3                  | -89.6          |
| Korea, Republic of                | 139.1          | 104.4          | -24.9                                                       | 159.3          | 165.6          | 4.0                                                         | -20.2                   | -61.2          |
| Turkey                            | 4061.5         | 3923.8         | -3.4                                                        | 2871.4         | 2924.9         | 1.9                                                         | 1190.1                  | 998.9          |
| United States                     | 607.1          | 718.2          | 18.3                                                        | 546.3          | 474.7          | -13.1                                                       | 60.8                    | 243.5          |
| <b>EFTA<sup>4</sup></b>           | <b>311.0</b>   | <b>224.2</b>   | <b>-27.9</b>                                                | <b>376.2</b>   | <b>413.5</b>   | <b>9.9</b>                                                  | <b>-65.2</b>            | <b>-189.3</b>  |
| of which:                         |                |                |                                                             |                |                |                                                             |                         |                |
| Norway                            | 69.8           | 47.4           | -32.1                                                       | 32.1           | 32.6           | 1.6                                                         | 37.7                    | 14.8           |
| Switzerland                       | 237.7          | 174.7          | -26.5                                                       | 341.9          | 377.3          | 10.4                                                        | -104.2                  | -202.6         |

<sup>1</sup> Partner country:

- In case of exports (or dispatches) is the country (or Member State) of final destination of the goods.

- In case of imports (or arrivals) is the country (or Member State) of consignment of the goods.

<sup>2</sup> CIS includes: Azerbaijan; Armenia; Belarus; Kazakhstan; Kyrgyz, Republic; Moldova, Republic of; Russian Federation; Tajikistan; Turkmenistan; Uzbekistan and Ukraine.

<sup>3</sup> OECD includes: Australia; Virgin Islands (US); United States; Iceland; Canada; Mexico; New Zealand; Norway; Korea, Republic of; Turkey; Switzerland; Japan; Israel and Chile.

<sup>4</sup> EFTA includes: Norway; Switzerland; Iceland and Liechtenstein.

Table 3

Exports, imports and trade balance by groups of countries and main partner countries<sup>1</sup> of Bulgaria in 2014 and 2015

(Continued and end)

| Countries and groups of countries                 | Exports - FOB |        |                                                             | Imports - CIF |        |                                                             | Trade balance - FOB/CIF |        |
|---------------------------------------------------|---------------|--------|-------------------------------------------------------------|---------------|--------|-------------------------------------------------------------|-------------------------|--------|
|                                                   | 2014          | 2015   | Change compared to the same period of the previous year - % | 2014          | 2015   | Change compared to the same period of the previous year - % | 2014                    | 2015   |
|                                                   | Million BGN   |        |                                                             | Million BGN   |        |                                                             | Million BGN             |        |
| <b>Countries not included in the upper groups</b> |               |        |                                                             |               |        |                                                             |                         |        |
| Albania                                           | 118.9         | 111.6  | -6.1                                                        | 37.0          | 38.0   | 2.7                                                         | 81.9                    | 73.6   |
| Bosnia and Herzegovina                            | 82.5          | 118.1  | 43.2                                                        | 84.8          | 58.9   | -30.5                                                       | -2.3                    | 59.2   |
| Brazil                                            | 29.7          | 45.4   | 52.9                                                        | 104.1         | 59.3   | -43.0                                                       | -74.4                   | -13.9  |
| China                                             | 1043.2        | 1049.5 | 0.6                                                         | 1691.9        | 1894.6 | 12.0                                                        | -648.7                  | -845.1 |
| Egypt                                             | 360.7         | 738.3  | 104.7                                                       | 300.3         | 201.4  | -32.9                                                       | 60.4                    | 536.9  |
| Former Yugoslav Republic of Macedonia             | 701.7         | 754.6  | 7.5                                                         | 523.5         | 507.7  | -3.0                                                        | 178.2                   | 246.9  |
| Georgia                                           | 360.5         | 316.4  | -12.2                                                       | 420.7         | 446.9  | 6.2                                                         | -60.2                   | -130.5 |
| India                                             | 95.1          | 109.9  | 15.6                                                        | 224.6         | 275.5  | 22.7                                                        | -129.5                  | -165.6 |
| Indonesia                                         | 54.8          | 99.1   | 80.8                                                        | 64.5          | 72.0   | 11.6                                                        | -9.7                    | 27.1   |
| Iran, Islamic Republic of                         | 182.8         | 244.5  | 33.8                                                        | 64.4          | 28.1   | -56.4                                                       | 118.4                   | 216.4  |
| Peru                                              | 7.2           | 5.9    | -18.1                                                       | 50.9          | 40.9   | -19.6                                                       | -43.7                   | -35.0  |
| Serbia                                            | 711.4         | 820.0  | 15.3                                                        | 589.8         | 696.8  | 18.1                                                        | 121.6                   | 123.2  |
| Singapore                                         | 1109.6        | 664.5  | -40.1                                                       | 41.2          | 54.7   | 32.8                                                        | 1068.4                  | 609.8  |
| South Africa                                      | 81.9          | 109.4  | 33.6                                                        | 43.5          | 24.4   | -43.9                                                       | 38.4                    | 85.0   |
| Syrian Arab Republic                              | 158.0         | 46.2   | -70.8                                                       | 35.4          | 14.7   | -58.5                                                       | 122.6                   | 31.5   |
| Taiwan                                            | 38.7          | 41.4   | 7.0                                                         | 213.6         | 216.4  | 1.3                                                         | -174.9                  | -175.0 |
| United Arab Emirates                              | 529.4         | 416.7  | -21.3                                                       | 98.3          | 138.2  | 40.6                                                        | 431.1                   | 278.5  |
| Viet Nam                                          | 36.4          | 70.7   | 94.2                                                        | 100.0         | 89.3   | -10.7                                                       | -63.6                   | -18.6  |

<sup>1</sup> Partner country:

- In case of exports (or dispatches) is the country (or Member State) of final destination of the goods.
- In case of imports (or arrivals) is the country (or Member State) of consignment of the goods.



**Table 4**

**Exports, imports and trade balance of Bulgaria by sections of SITC, rev. 4 in 2014 and 2015**

| Sections by SITC                                  | Exports - FOB  |                |                                                             | Imports - CIF  |                |                                                             | Trade balance - FOB/CIF |                |
|---------------------------------------------------|----------------|----------------|-------------------------------------------------------------|----------------|----------------|-------------------------------------------------------------|-------------------------|----------------|
|                                                   | 2014           | 2015           | Change compared to the same period of the previous year - % | 2014           | 2015           | Change compared to the same period of the previous year - % | 2014                    | 2015           |
|                                                   | Million BGN    |                |                                                             | Million BGN    |                |                                                             | Million BGN             |                |
| <b>Total</b>                                      | <b>43233.5</b> | <b>44949.5</b> | <b>4.0</b>                                                  | <b>51097.4</b> | <b>51549.0</b> | <b>0.9</b>                                                  | <b>-7863.9</b>          | <b>-6599.5</b> |
| <b>of which EU</b>                                | <b>26921.1</b> | <b>29049.4</b> | <b>7.9</b>                                                  | <b>31512.3</b> | <b>33157.2</b> | <b>5.2</b>                                                  | <b>-4591.2</b>          | <b>-4107.8</b> |
| Food and live animals                             | 4679.1         | 4857.3         | 3.8                                                         | 3663.0         | 3980.9         | 8.7                                                         | 1016.1                  | 876.4          |
| of which EU                                       | 3168.4         | 3260.5         | 2.9                                                         | 3069.2         | 3184.3         | 3.8                                                         | 99.2                    | 76.2           |
| Beverages and tobacco                             | 869.3          | 823.9          | -5.2                                                        | 666.2          | 733.1          | 10.0                                                        | 203.1                   | 90.8           |
| of which EU                                       | 296.5          | 288.2          | -2.8                                                        | 466.9          | 585.1          | 25.3                                                        | -170.4                  | -296.9         |
| Crude materials, inedible (except fuel)           | 3112.9         | 2953.8         | -5.1                                                        | 4207.0         | 4230.3         | 0.6                                                         | -1094.1                 | -1276.5        |
| of which EU                                       | 1881.5         | 1850.8         | -1.6                                                        | 2597.8         | 2453.2         | -5.6                                                        | -716.3                  | -602.4         |
| Mineral fuel, lubricants and related materials    | 5610.7         | 4859.5         | -13.4                                                       | 10181.1        | 8042.6         | -21.0                                                       | -4570.4                 | -3183.1        |
| of which EU                                       | 1234.6         | 1388.3         | 12.4                                                        | 1871.9         | 1448.9         | -22.6                                                       | -637.3                  | -60.6          |
| Animals and vegetable oils, fats and waxes        | 440.8          | 471.7          | 7.0                                                         | 182.9          | 177.9          | -2.7                                                        | 257.9                   | 293.8          |
| of which EU                                       | 333.9          | 323.1          | -3.2                                                        | 139.0          | 122.2          | -12.1                                                       | 194.9                   | 200.9          |
| Chemical and related products n.e.c.              | 3945.3         | 4437.3         | 12.5                                                        | 6542.2         | 7238.4         | 10.6                                                        | -2596.9                 | -2801.1        |
| of which EU                                       | 2102.9         | 2576.5         | 22.5                                                        | 5014.9         | 5533.0         | 10.3                                                        | -2912.0                 | -2956.5        |
| Manufactured goods classified chiefly by material | 9634.7         | 9968.6         | 3.5                                                         | 8936.8         | 8722.5         | -2.4                                                        | 697.9                   | 1246.1         |
| of which EU                                       | 6428.3         | 6859.5         | 6.7                                                         | 5497.3         | 5458.3         | -0.7                                                        | 931.0                   | 1401.2         |
| Machinery and transport equipment                 | 8392.0         | 9400.8         | 12.0                                                        | 12789.5        | 14006.2        | 9.5                                                         | -4397.5                 | -4605.4        |
| of which EU                                       | 6137.3         | 6891.9         | 12.3                                                        | 9915.2         | 11136.3        | 12.3                                                        | -3777.9                 | -4244.4        |
| Miscellaneous manufactured articles               | 6437.3         | 7058.2         | 9.6                                                         | 3659.8         | 4137.9         | 13.1                                                        | 2777.5                  | 2920.3         |
| of which EU                                       | 5264.3         | 5522.7         | 4.9                                                         | 2706.0         | 2986.9         | 10.4                                                        | 2558.3                  | 2535.8         |
| Commodities and transactions n.e.c.               | 111.4          | 118.4          | 6.3                                                         | 268.9          | 279.2          | 3.8                                                         | -157.5                  | -160.8         |
| of which EU                                       | 73.4           | 87.9           | 19.8                                                        | 234.1          | 249.0          | 6.4                                                         | -160.7                  | -161.1         |