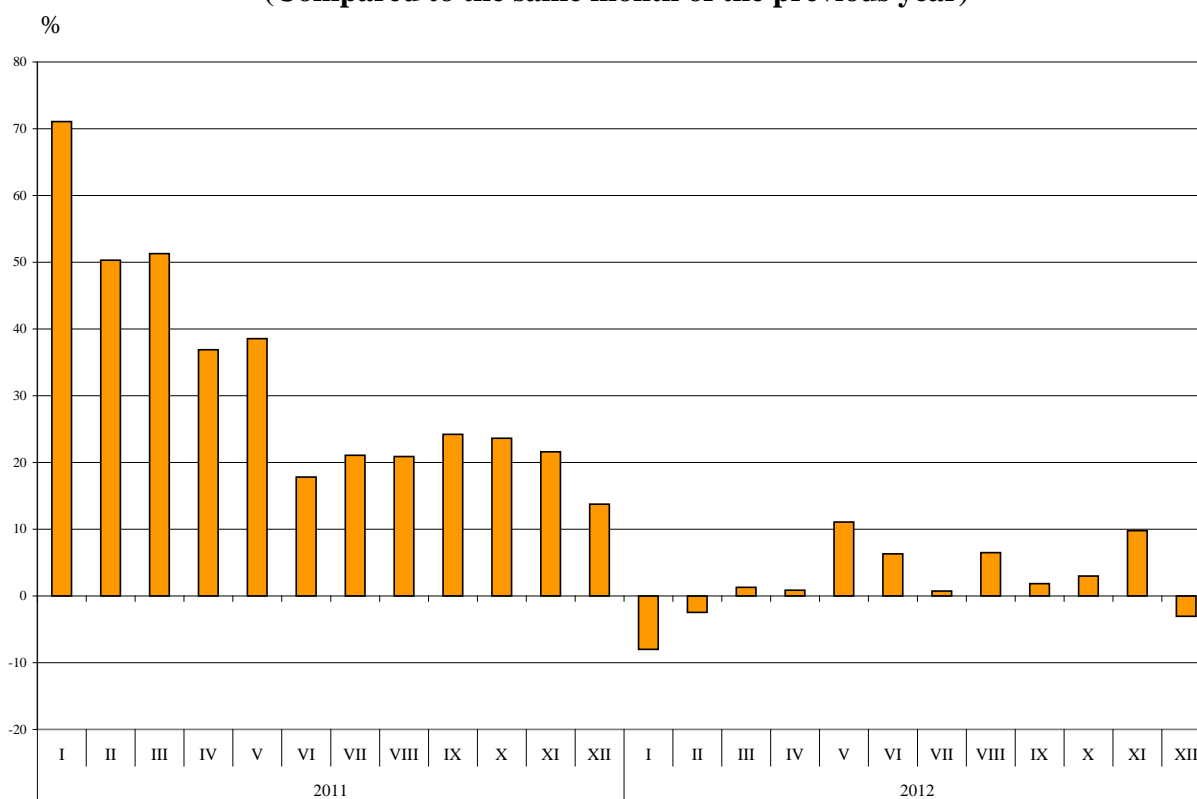




## FOREIGN TRADE OF BULGARIA FOR 2012 - FINAL DATA

In 2012 the **exported goods** were for 40.6 Billion Levs and compared to 2011 the exports increased by 2.5% (Annex, Table 1 and 2). Compared to the same month of the previous year the largest growth was observed in May (by 11.1%) and the largest fall in January (by 8.0%).

**Figure 1. Nominal value<sup>1</sup> change of exports for the period 2011 – 2012  
(Compared to the same month of the previous year)**

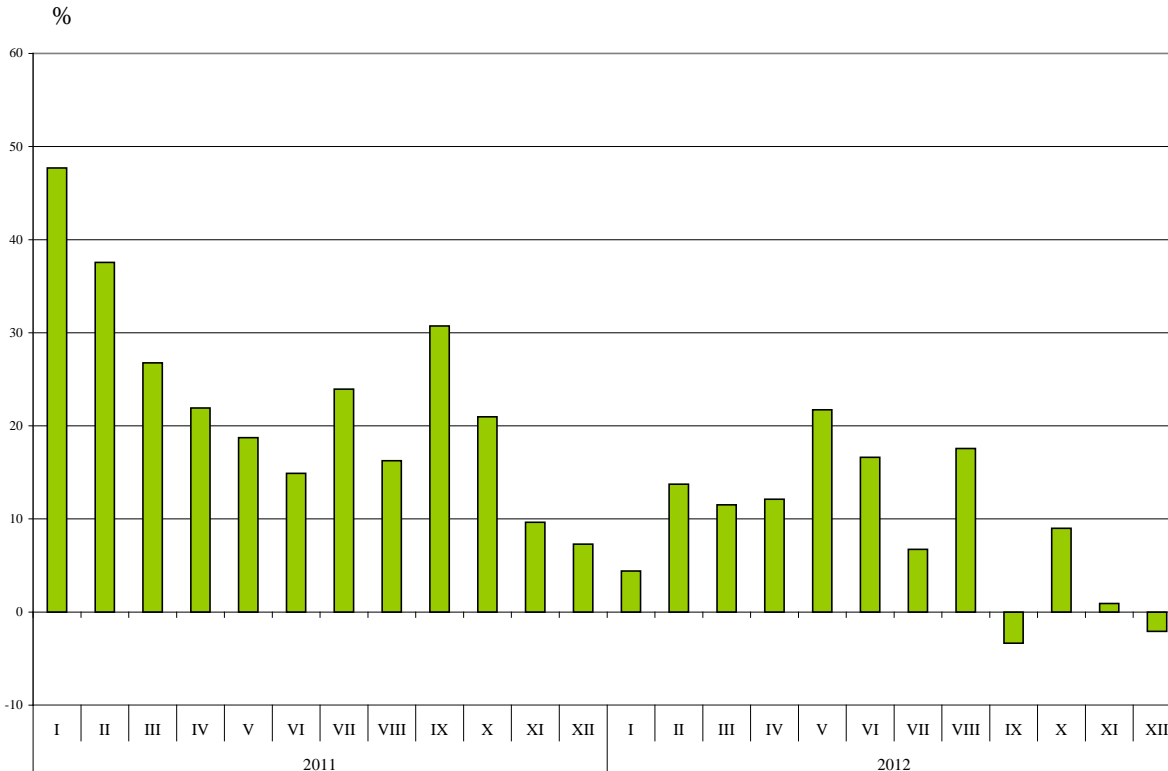


**The imported goods** in 2012 were for 49.8 Billion Levs (at CIF prices) or 8.8% more than in the previous year (Annex, Table 1 and 2). In 2012 compared to the corresponding month of 2011 the largest growth was observed in May - by 21.7% and falls were reported in September (by 3.3%) and December (by 2.1%). The tendency the imports to be higher than the exports continued in 2012.

<sup>1</sup> Value changes at current prices.



**Figure 2. Nominal value<sup>1</sup> change of imports for the period 2011 – 2012  
(Compared to the same month of the previous year)**



**Foreign trade balance** (exports FOB - import CIF) was negative in 2012 and amounted to 9.2 Billion Levs, which was 3.0 Billion Levs more than the balance in 2011 (Annex, Table 1 and 2). At FOB/FOB prices (after elimination of transport and insurance costs on imports) the negative balance for 2012 added up to 6.8 Billion Levs.

The **exports** of Bulgaria in 2012 distributed according to the Standard International Trade Classification showed an increase in most of the sections compared to 2011 (Annex, Table 4). The largest growth was recorded in the section „Mineral fuel, lubricants and related materials” (by 23.7%). The most notable fall was reported in the section “Crude materials, inedible (except fuel)”<sup>2</sup> (by 10.4%).

In **imports** the largest growths were recorded in the sections: „Mineral fuel, lubricants and related materials” (by 17.9%) and “Animal and vegetable oils, fats and waxes” (by 15.8%). Fall was reported in the section “Crude materials, inedible (except fuel)” (by 3.1%).

<sup>1</sup> Value changes at current prices.

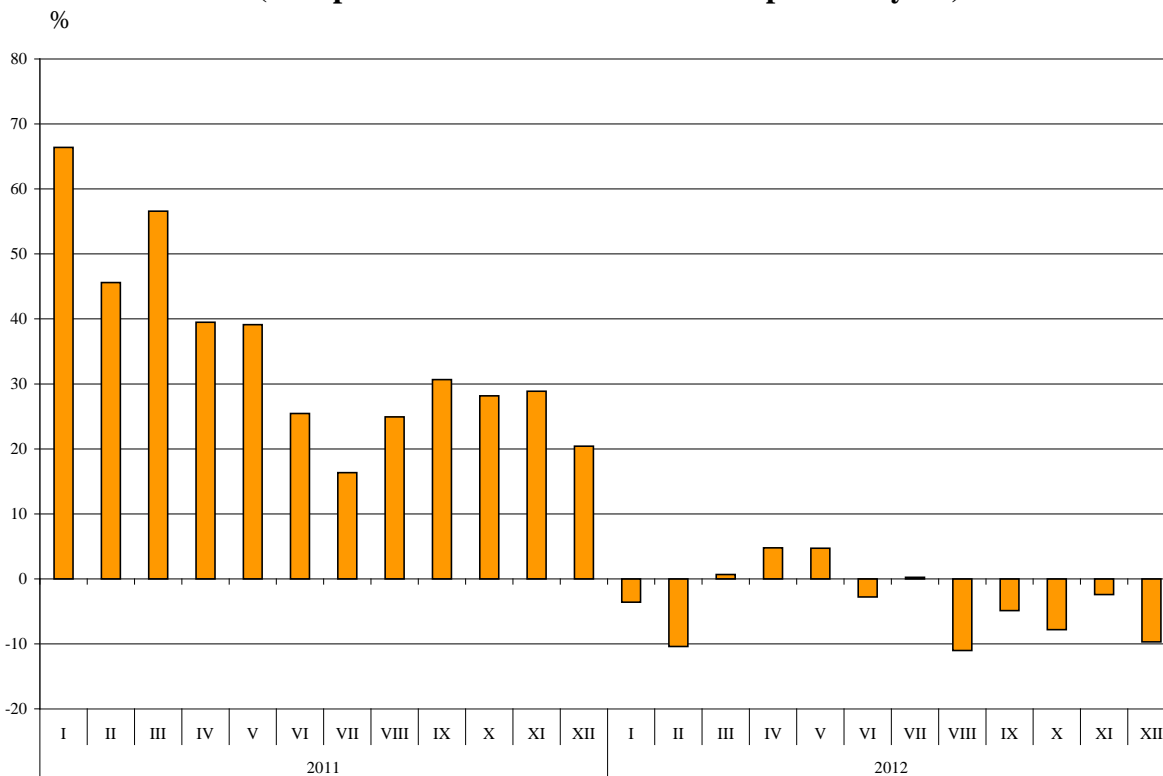
<sup>2</sup> The section includes the following divisions: Hides, skins and furskins, raw; Oil seeds and oleaginous fruits; Crude rubber (including synthetic and reclaimed); Cork and wood; Pulp and waste paper; Textile fibres (other than wool tops and other combed wool) and their wastes (not manufactured into yarn or fabric); Crude fertilizers, other than those of division 56, and crude minerals (excluding coal, petroleum and precious stones); Metalliferous ores and metal scrap; Crude animal and vegetable materials, n.e.s.



## Bulgarian trade with EU

In 2012 the **exports** of Bulgaria to **EU countries** decreased by 3.5% compared to the previous year and amounted to 23.8 Billion Levs (Annex, Table 1 and 2). Main trade partners of Bulgaria were Germany, Italy, Romania, Greece, France, Belgium and Spain which accounted for 75.6% from the exports to EU (Annex, Table 3).

**Figure 3. Nominal value<sup>1</sup> change of exports to EU for the period 2011 – 2012**  
(Compared to the same month of the previous year)

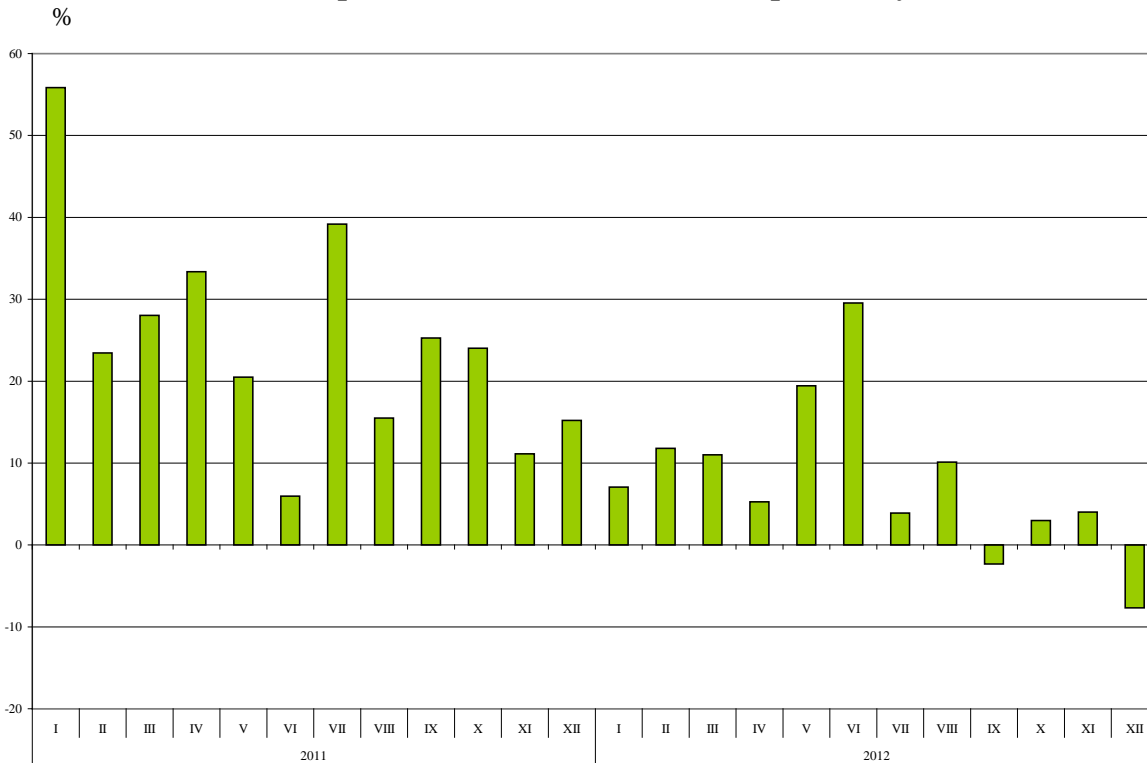


The Bulgarian **imports from EU countries** in 2012 increased by 7.4% compared to the previous year and added up to 29.2 Billion Levs (Annex, Table 1 and 2). The largest amounts were reported for the goods imported from Germany, Italy, Romania, Greece and Spain.

<sup>1</sup> Value changes at current prices.



**Figure 4. Nominal value<sup>1</sup> change of imports from EU for the period 2011 – 2012  
(Compared to the same month of the previous year)**



**Foreign trade balance** (exports FOB - import CIF) of Bulgaria with **EU countries** was negative and amounted to 5.4 Billion Levs in 2012 (Annex, Table 1).

The **exports** of Bulgaria to **EU** distributed according to the Standard International Trade Classification showed that in 2012 compared to 2011 the largest increase was observed in exports from the section „Mineral fuel, lubricants and related materials” (by 22.1%) (Annex, Table 4).

The largest increase in **imports** from **EU** was observed also in section „Mineral fuel, lubricants and related materials” (by 42.4%).

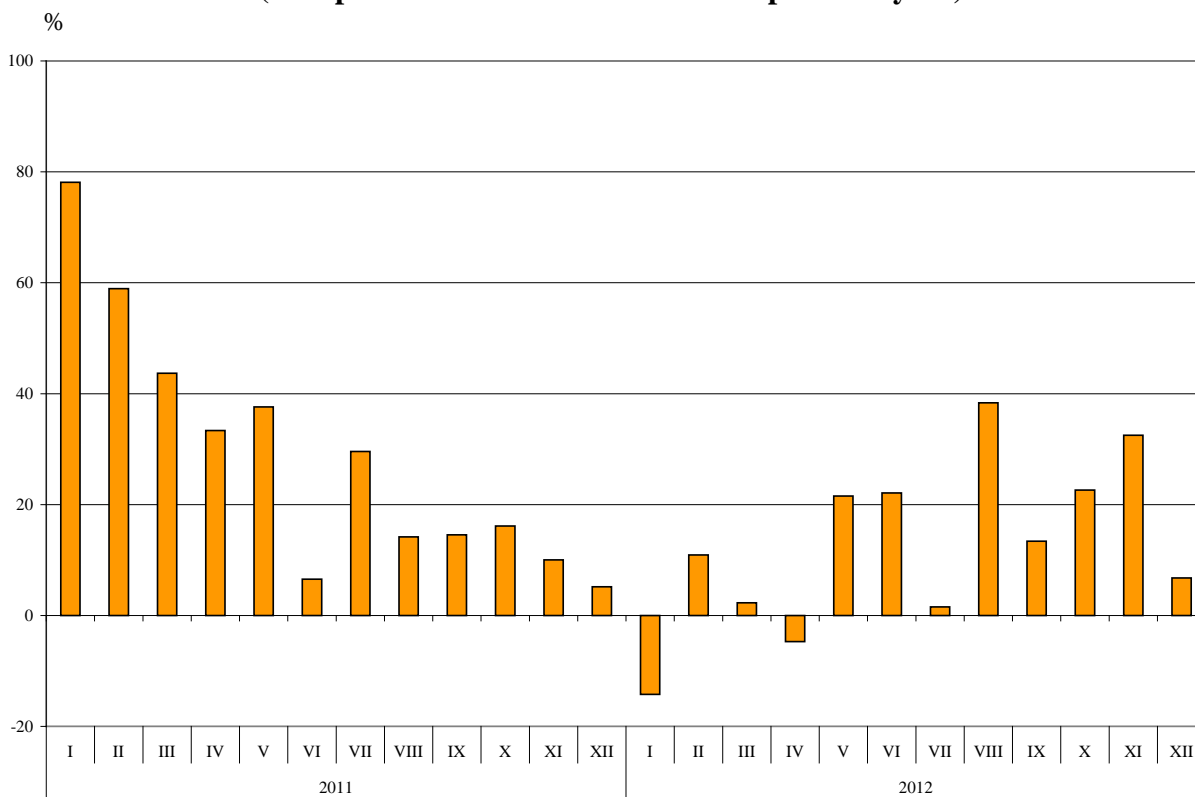
<sup>1</sup> Value changes at current prices.



## Bulgarian trade with third countries

In 2012 the Bulgarian **exports to third countries** increased by 12.4% compared to the previous year and added up to 16.8 Billion Levs (Annex, Table 1 and 2). Main trade partners of Bulgaria were Turkey, Gibraltar, China, Russian Federation and Serbia which accounted for 49.8% of the total exports to non EU countries (Annex, Table.3).

**Figure 5. Nominal value<sup>1</sup> change of exports to non EU countries  
for the period 2011 – 2012  
(Compared to the same month of the previous year)**

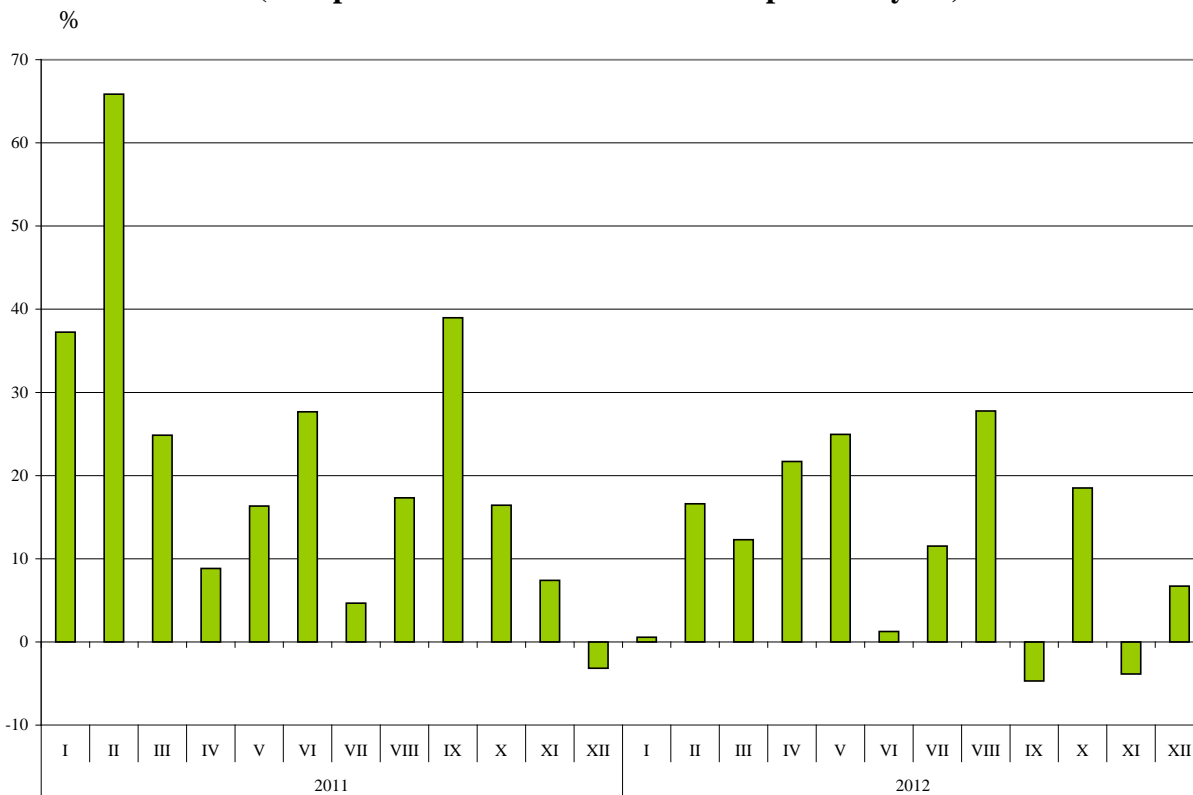


Bulgarian **imports from third countries** in 2012 increased by 10.7%, compared to the previous year, and amounted to 20.6 Billion Levs (Annex, Table 1 and 2). The largest amounts were reported for the goods imported from Russian Federation, Turkey, China and Ukraine.

<sup>1</sup> Value changes at current prices.



**Figure 6. Nominal value<sup>1</sup> change of imports to non EU countries  
 for the period 2011 – 2012  
 (Compared to the same month of the previous year)**



**The trade balance** of Bulgaria (export FOB - import CIF) with **third countries** was negative and added up to 3.8 Billion Levs for 2012 (Annex, Table 1).

<sup>1</sup> Value changes at current prices.

Annex

Table 1

Exports, imports and trade balance of Bulgaria in 2011 and 2012 by months

(Million Levs)

| Months/<br>Periods   | Exports - FOB  |                |                | Imports - CIF  |                |                | Imports - FOB <sup>1</sup> |                |                | Trade balance - FOB/CIF |                |                | Trade balance - FOB/FOB <sup>1</sup> |                |                |
|----------------------|----------------|----------------|----------------|----------------|----------------|----------------|----------------------------|----------------|----------------|-------------------------|----------------|----------------|--------------------------------------|----------------|----------------|
|                      | Total          | EU             | Non EU         | Total          | EU             | Non EU         | Total                      | EU             | Non EU         | Total                   | EU             | Non EU         | Total                                | EU             | Non EU         |
| I.2011               | 3054.5         | 1789.0         | 1265.5         | 3353.1         | 1987.0         | 1366.1         | 3211.1                     | 1907.9         | 1303.2         | -298.6                  | -198.0         | -100.6         | -156.6                               | -118.9         | -37.7          |
| II.2011              | 2935.1         | 1840.9         | 1094.2         | 3168.3         | 1898.6         | 1269.7         | 3041.6                     | 1827.9         | 1213.7         | -233.2                  | -57.7          | -175.5         | -106.5                               | 13.0           | -119.5         |
| III.2011             | 3320.2         | 2027.1         | 1293.1         | 3772.8         | 2284.2         | 1488.6         | 3613.6                     | 2193.5         | 1420.1         | -452.6                  | -257.1         | -195.5         | -293.4                               | -166.4         | -127.0         |
| <b>I - III.2011</b>  | <b>9309.8</b>  | <b>5657.0</b>  | <b>3652.8</b>  | <b>10294.2</b> | <b>6169.8</b>  | <b>4124.4</b>  | <b>9866.3</b>              | <b>5929.3</b>  | <b>3937.0</b>  | <b>-984.4</b>           | <b>-512.8</b>  | <b>-471.6</b>  | <b>-556.5</b>                        | <b>-272.3</b>  | <b>-284.2</b>  |
| IV.2011              | 3144.3         | 1850.8         | 1293.5         | 3815.2         | 2226.2         | 1589.0         | 3652.4                     | 2137.7         | 1514.7         | -670.9                  | -375.4         | -295.5         | -508.1                               | -286.9         | -221.2         |
| V.2011               | 3283.6         | 2041.0         | 1242.6         | 3817.6         | 2238.1         | 1579.5         | 3659.2                     | 2153.0         | 1506.2         | -534.0                  | -197.1         | -336.9         | -375.6                               | -112.0         | -263.6         |
| VI.2011              | 3256.6         | 2067.1         | 1189.5         | 3749.3         | 2035.1         | 1714.2         | 3591.2                     | 1958.4         | 1632.8         | -492.7                  | 32.0           | -524.7         | -334.6                               | 108.7          | -443.3         |
| <b>IV - VI.2011</b>  | <b>9684.5</b>  | <b>5958.9</b>  | <b>3725.6</b>  | <b>11382.1</b> | <b>6499.4</b>  | <b>4882.7</b>  | <b>10902.8</b>             | <b>6249.1</b>  | <b>4653.7</b>  | <b>-1697.6</b>          | <b>-540.5</b>  | <b>-1157.1</b> | <b>-1218.3</b>                       | <b>-290.2</b>  | <b>-928.1</b>  |
| <b>I - VI.2011</b>   | <b>18994.3</b> | <b>11615.9</b> | <b>7378.4</b>  | <b>21676.3</b> | <b>12669.2</b> | <b>9007.1</b>  | <b>20769.1</b>             | <b>12178.4</b> | <b>8590.7</b>  | <b>-2682.0</b>          | <b>-1053.3</b> | <b>-1628.7</b> | <b>-1774.8</b>                       | <b>-562.5</b>  | <b>-1212.3</b> |
| VII.2011             | 3618.8         | 2235.9         | 1382.9         | 4067.4         | 2551.8         | 1515.6         | 3893.6                     | 2449.2         | 1444.4         | -448.6                  | -315.9         | -132.7         | -274.8                               | -213.3         | -61.5          |
| VIII.2011            | 3435.1         | 2216.1         | 1219.0         | 3500.4         | 2023.3         | 1477.1         | 3357.6                     | 1945.3         | 1412.3         | -65.3                   | 192.8          | -258.1         | 77.5                                 | 270.8          | -193.3         |
| IX.2011              | 3485.3         | 2199.8         | 1285.5         | 4172.6         | 2404.3         | 1768.3         | 3988.7                     | 2307.3         | 1681.4         | -687.3                  | -204.5         | -482.8         | -503.4                               | -107.5         | -395.9         |
| <b>VII - IX.2011</b> | <b>10539.2</b> | <b>6651.8</b>  | <b>3887.4</b>  | <b>11740.4</b> | <b>6979.4</b>  | <b>4761.0</b>  | <b>11239.9</b>             | <b>6701.8</b>  | <b>4538.1</b>  | <b>-1201.2</b>          | <b>-327.6</b>  | <b>-873.6</b>  | <b>-700.7</b>                        | <b>-50.0</b>   | <b>-650.7</b>  |
| <b>I - IX.2011</b>   | <b>29533.5</b> | <b>18267.7</b> | <b>11265.8</b> | <b>33416.7</b> | <b>19648.6</b> | <b>13768.1</b> | <b>32009.0</b>             | <b>18880.2</b> | <b>13128.8</b> | <b>-3883.2</b>          | <b>-1380.9</b> | <b>-2502.3</b> | <b>-2475.5</b>                       | <b>-612.5</b>  | <b>-1863.0</b> |
| X.2011               | 3531.7         | 2277.9         | 1253.8         | 4162.9         | 2548.3         | 1614.6         | 3989.8                     | 2449.4         | 1540.4         | -631.2                  | -270.4         | -360.8         | -458.1                               | -171.5         | -286.6         |
| XI.2011              | 3464.0         | 2254.5         | 1209.5         | 4301.1         | 2607.5         | 1693.6         | 4116.4                     | 2501.4         | 1615.0         | -837.1                  | -353.0         | -484.1         | -652.4                               | -246.9         | -405.5         |
| XII.2011             | 3104.4         | 1852.0         | 1252.4         | 3897.8         | 2379.3         | 1518.5         | 3735.4                     | 2285.2         | 1450.2         | -793.4                  | -527.3         | -266.1         | -631.0                               | -433.2         | -197.8         |
| <b>X - XII.2011</b>  | <b>10100.1</b> | <b>6384.4</b>  | <b>3715.7</b>  | <b>12361.8</b> | <b>7535.1</b>  | <b>4826.7</b>  | <b>11841.6</b>             | <b>7236.0</b>  | <b>4605.6</b>  | <b>-2261.7</b>          | <b>-1150.7</b> | <b>-1111.0</b> | <b>-1741.5</b>                       | <b>-851.6</b>  | <b>-889.9</b>  |
| <b>I - XII.2011</b>  | <b>39633.6</b> | <b>24652.1</b> | <b>14981.5</b> | <b>45778.5</b> | <b>27183.7</b> | <b>18594.8</b> | <b>43850.6</b>             | <b>26116.2</b> | <b>17734.4</b> | <b>-6144.9</b>          | <b>-2531.6</b> | <b>-3613.3</b> | <b>-4217.0</b>                       | <b>-1464.1</b> | <b>-2752.9</b> |

<sup>1</sup> By data of BNB for the transport costs.

Exports, imports and trade balance of Bulgaria in 2011 and 2012 by months

(Continued and end)

(Million Levs)

| Months/<br>Periods   | Exports - FOB  |                |                | Imports - CIF  |                |                | Imports - FOB <sup>1</sup> |                |                | Trade balance - FOB/CIF |                |                | Trade balance - FOB/FOB <sup>1</sup> |                |                |
|----------------------|----------------|----------------|----------------|----------------|----------------|----------------|----------------------------|----------------|----------------|-------------------------|----------------|----------------|--------------------------------------|----------------|----------------|
|                      | Total          | EU             | Non EU         | Total          | EU             | Non EU         | Total                      | EU             | Non EU         | Total                   | EU             | Non EU         | Total                                | EU             | Non EU         |
| I.2012               | 2810.3         | 1724.6         | 1085.7         | 3501.3         | 2127.5         | 1373.8         | 3330.7                     | 2027.2         | 1303.5         | -691.0                  | -402.9         | -288.1         | -520.4                               | -302.6         | -217.8         |
| II.2012              | 2862.9         | 1649.4         | 1213.5         | 3603.3         | 2122.8         | 1480.5         | 3433.5                     | 2030.1         | 1403.4         | -740.4                  | -473.4         | -267.0         | -570.6                               | -380.7         | -189.9         |
| III.2012             | 3363.6         | 2041.0         | 1322.6         | 4207.2         | 2535.5         | 1671.7         | 4008.0                     | 2421.3         | 1586.7         | -843.6                  | -494.5         | -349.1         | -644.4                               | -380.3         | -264.1         |
| <b>I - III.2012</b>  | <b>9036.8</b>  | <b>5415.0</b>  | <b>3621.8</b>  | <b>11311.8</b> | <b>6785.8</b>  | <b>4526.0</b>  | <b>10772.2</b>             | <b>6478.6</b>  | <b>4293.6</b>  | <b>-2275.0</b>          | <b>-1370.8</b> | <b>-904.2</b>  | <b>-1735.4</b>                       | <b>-1063.6</b> | <b>-671.8</b>  |
| IV.2012              | 3171.8         | 1939.0         | 1232.8         | 4277.3         | 2343.6         | 1933.7         | 4068.0                     | 2241.4         | 1826.6         | -1105.5                 | -404.6         | -700.9         | -896.2                               | -302.4         | -593.8         |
| V.2012               | 3647.7         | 2137.2         | 1510.5         | 4646.8         | 2673.1         | 1973.7         | 4420.4                     | 2551.0         | 1869.4         | -999.1                  | -535.9         | -463.2         | -772.7                               | -413.8         | -358.9         |
| VI.2012              | 3462.2         | 2009.8         | 1452.4         | 4372.3         | 2636.6         | 1735.7         | 4158.3                     | 2511.2         | 1647.1         | -910.1                  | -626.8         | -283.3         | -696.1                               | -501.4         | -194.7         |
| <b>IV-VI.2012</b>    | <b>10281.7</b> | <b>6086.0</b>  | <b>4195.7</b>  | <b>13296.4</b> | <b>7653.3</b>  | <b>5643.1</b>  | <b>12646.7</b>             | <b>7303.6</b>  | <b>5343.1</b>  | <b>-3014.7</b>          | <b>-1567.3</b> | <b>-1447.4</b> | <b>-2365.0</b>                       | <b>-1217.6</b> | <b>-1147.4</b> |
| <b>I - VI.2012</b>   | <b>19318.5</b> | <b>11501.0</b> | <b>7817.5</b>  | <b>24608.2</b> | <b>14439.1</b> | <b>10169.1</b> | <b>23418.9</b>             | <b>13782.2</b> | <b>9636.7</b>  | <b>-5289.7</b>          | <b>-2938.1</b> | <b>-2351.6</b> | <b>-4100.4</b>                       | <b>-2281.2</b> | <b>-1819.2</b> |
| VII.2012             | 3645.9         | 2241.6         | 1404.3         | 4341.6         | 2651.4         | 1690.2         | 4134.1                     | 2530.7         | 1603.4         | -695.7                  | -409.8         | -285.9         | -488.2                               | -289.1         | -199.1         |
| VIII.2012            | 3658.4         | 1972.0         | 1686.4         | 4115.4         | 2228.1         | 1887.3         | 3913.7                     | 2131.0         | 1782.7         | -457.0                  | -256.1         | -200.9         | -255.3                               | -159.0         | -96.3          |
| IX.2012              | 3549.9         | 2092.3         | 1457.6         | 4033.4         | 2348.2         | 1685.2         | 3836.8                     | 2245.5         | 1591.3         | -483.5                  | -255.9         | -227.6         | -286.9                               | -153.2         | -133.7         |
| <b>VII - IX.2012</b> | <b>10854.2</b> | <b>6305.9</b>  | <b>4548.3</b>  | <b>12490.4</b> | <b>7227.7</b>  | <b>5262.7</b>  | <b>11884.6</b>             | <b>6907.2</b>  | <b>4977.4</b>  | <b>-1636.2</b>          | <b>-921.8</b>  | <b>-714.4</b>  | <b>-1030.4</b>                       | <b>-601.3</b>  | <b>-429.1</b>  |
| <b>I - IX.2012</b>   | <b>30172.7</b> | <b>17806.9</b> | <b>12365.8</b> | <b>37098.6</b> | <b>21666.8</b> | <b>15431.8</b> | <b>35303.5</b>             | <b>20689.4</b> | <b>14614.1</b> | <b>-6925.9</b>          | <b>-3859.9</b> | <b>-3066.0</b> | <b>-5130.8</b>                       | <b>-2882.5</b> | <b>-2248.3</b> |
| X.2012               | 3637.5         | 2100.0         | 1537.5         | 4537.8         | 2624.5         | 1913.3         | 4316.2                     | 2508.8         | 1807.4         | -900.3                  | -524.5         | -375.8         | -678.7                               | -408.8         | -269.9         |
| XI.2012              | 3802.9         | 2200.3         | 1602.6         | 4340.5         | 2712.3         | 1628.2         | 4131.3                     | 2588.7         | 1542.6         | -537.6                  | -512.0         | -25.6          | -328.4                               | -388.4         | 60.0           |
| XII.2012             | 3009.8         | 1672.6         | 1337.2         | 3816.8         | 2196.4         | 1620.4         | 3639.6                     | 2100.4         | 1539.2         | -807.0                  | -523.8         | -283.2         | -629.8                               | -427.8         | -202.0         |
| <b>X - XII.2012</b>  | <b>10450.2</b> | <b>5972.9</b>  | <b>4477.3</b>  | <b>12695.1</b> | <b>7533.2</b>  | <b>5161.9</b>  | <b>12087.1</b>             | <b>7197.9</b>  | <b>4889.2</b>  | <b>-2244.9</b>          | <b>-1560.3</b> | <b>-684.6</b>  | <b>-1636.9</b>                       | <b>-1225.0</b> | <b>-411.9</b>  |
| <b>I - XII.2012</b>  | <b>40622.9</b> | <b>23779.8</b> | <b>16843.1</b> | <b>49793.7</b> | <b>29200.0</b> | <b>20593.7</b> | <b>47390.6</b>             | <b>27887.3</b> | <b>19503.3</b> | <b>-9170.8</b>          | <b>-5420.2</b> | <b>-3750.6</b> | <b>-6767.7</b>                       | <b>-4107.5</b> | <b>-2660.2</b> |

<sup>1</sup> By data of BNB for the transport costs.





Table 2

Value changes of exports and imports of Bulgaria in 2012 compared to the same period of the previous year

(Per cent)

| Months/Periods  | Exports - FOB |             |             | Imports - CIF |             |             | Imports - FOB |             |             |
|-----------------|---------------|-------------|-------------|---------------|-------------|-------------|---------------|-------------|-------------|
|                 | Total         | EU          | Non EU      | Total         | EU          | Non EU      | Total         | EU          | Non EU      |
| I               | -8.0          | -3.6        | -14.2       | 4.4           | 7.1         | 0.6         | 3.7           | 6.3         | 0.0         |
| II              | -2.5          | -10.4       | 10.9        | 13.7          | 11.8        | 16.6        | 12.9          | 11.1        | 15.6        |
| III             | 1.3           | 0.7         | 2.3         | 11.5          | 11.0        | 12.3        | 10.9          | 10.4        | 11.7        |
| <b>I - III</b>  | <b>-2.9</b>   | <b>-4.3</b> | <b>-0.8</b> | <b>9.9</b>    | <b>10.0</b> | <b>9.7</b>  | <b>9.2</b>    | <b>9.3</b>  | <b>9.1</b>  |
| IV              | 0.9           | 4.8         | -4.7        | 12.1          | 5.3         | 21.7        | 11.4          | 4.9         | 20.6        |
| V               | 11.1          | 4.7         | 21.6        | 21.7          | 19.4        | 25.0        | 20.8          | 18.5        | 24.1        |
| VI              | 6.3           | -2.8        | 22.1        | 16.6          | 29.6        | 1.3         | 15.8          | 28.2        | 0.9         |
| <b>IV - VI</b>  | <b>6.2</b>    | <b>2.1</b>  | <b>12.6</b> | <b>16.8</b>   | <b>17.8</b> | <b>15.6</b> | <b>16.0</b>   | <b>16.9</b> | <b>14.8</b> |
| <b>I - VI</b>   | <b>1.7</b>    | <b>-1.0</b> | <b>6.0</b>  | <b>13.5</b>   | <b>14.0</b> | <b>12.9</b> | <b>12.8</b>   | <b>13.2</b> | <b>12.2</b> |
| VII             | 0.7           | 0.3         | 1.5         | 6.7           | 3.9         | 11.5        | 6.2           | 3.3         | 11.0        |
| VIII            | 6.5           | -11.0       | 38.3        | 17.6          | 10.1        | 27.8        | 16.6          | 9.5         | 26.2        |
| IX              | 1.9           | -4.9        | 13.4        | -3.3          | -2.3        | -4.7        | -3.8          | -2.7        | -5.4        |
| <b>VII - IX</b> | <b>3.0</b>    | <b>-5.2</b> | <b>17.0</b> | <b>6.4</b>    | <b>3.6</b>  | <b>10.5</b> | <b>5.7</b>    | <b>3.1</b>  | <b>9.7</b>  |
| <b>I - IX</b>   | <b>2.2</b>    | <b>-2.5</b> | <b>9.8</b>  | <b>11.0</b>   | <b>10.3</b> | <b>12.1</b> | <b>10.3</b>   | <b>9.6</b>  | <b>11.3</b> |
| X               | 3.0           | -7.8        | 22.6        | 9.0           | 3.0         | 18.5        | 8.2           | 2.4         | 17.3        |
| XI              | 9.8           | -2.4        | 32.5        | 0.9           | 4.0         | -3.9        | 0.4           | 3.5         | -4.5        |
| XII             | -3.0          | -9.7        | 6.8         | -2.1          | -7.7        | 6.7         | -2.6          | -8.1        | 6.1         |
| <b>X - XII</b>  | <b>3.5</b>    | <b>-6.4</b> | <b>20.5</b> | <b>2.7</b>    | <b>0.0</b>  | <b>6.9</b>  | <b>2.1</b>    | <b>-0.5</b> | <b>6.2</b>  |
| <b>I - XII</b>  | <b>2.5</b>    | <b>-3.5</b> | <b>12.4</b> | <b>8.8</b>    | <b>7.4</b>  | <b>10.7</b> | <b>8.1</b>    | <b>6.8</b>  | <b>10.0</b> |



**Table 3**  
**Exports, imports and trade balance of Bulgaria by groups of countries and main partner countries<sup>1</sup> in 2011 and 2012**

| Countries and groups of countries | Exports - FOB  |                |   | Imports - CIF  |                |   | Trade balance - FOB/CIF |                |
|-----------------------------------|----------------|----------------|---|----------------|----------------|---|-------------------------|----------------|
|                                   | 2011           | 2012           | Change compared to the same period of the previous year - % | 2011           | 2012           | Change compared to the same period of the previous year - % | 2011                    | 2012           |
|                                   | Million Levs   |                |   | Million Levs   |                |   | Million Levs            |                |
| <b>Total</b>                      | <b>39633.6</b> | <b>40622.9</b> | <b>2.5</b>  | <b>45778.5</b> | <b>49793.7</b> | <b>8.8</b>  | <b>-6144.9</b>          | <b>-9170.8</b> |
| <b>EU</b>                         | <b>24652.1</b> | <b>23779.8</b> | <b>-3.5</b>   | <b>27183.7</b> | <b>29200.0</b> | <b>7.4</b>  | <b>-2531.6</b>          | <b>-5420.2</b> |
| Austria                           | 759.3          | 744.0          | -2.0  | 1534.8         | 1529.9         | -0.3  | -775.5                  | -785.9         |
| Belgium                           | 1954.5         | 1497.9         | -23.4   | 777.4          | 872.3          | 12.2  | 1177.1                  | 625.6          |
| Cyprus                            | 119.8          | 163.5          | 36.5  | 155.8          | 154.5          | -0.8  | -36.0                   | 9.0            |
| Czech Republic                    | 425.8          | 497.2          | 16.8  | 792.0          | 958.2          | 21.0  | -366.2                  | -461.0         |
| Denmark                           | 264.1          | 185.8          | -29.6   | 172.3          | 177.9          | 3.3   | 91.8                    | 7.9            |
| Estonia                           | 24.1           | 21.9           | -9.1  | 10.8           | 11.3           | 4.6   | 13.3                    | 10.6           |
| Finland                           | 72.1           | 71.4           | -1.0  | 121.1          | 119.8          | -1.1  | -49.0                   | -48.4          |
| France                            | 1672.7         | 1623.4         | -2.9  | 1487.3         | 1450.3         | -2.5  | 185.4                   | 173.1          |
| Germany                           | 4606.4         | 4159.0         | -9.7  | 4960.0         | 5537.4         | 11.6  | -353.6                  | -1378.4        |
| Greece                            | 2784.2         | 2923.1         | 5.0   | 2568.1         | 3017.2         | 17.5  | 216.1                   | -94.1          |
| Hungary                           | 499.3          | 471.9          | -5.5  | 1384.2         | 1488.5         | 7.5   | -884.9                  | -1016.6        |
| Ireland                           | 29.0           | 59.8           | 106.2   | 150.7          | 165.8          | 10.0  | -121.7                  | -106.0         |
| Italy                             | 3443.8         | 3449.8         | 0.2   | 3269.8         | 3299.1         | 0.9   | 174.0                   | 150.7          |
| Latvia                            | 45.3           | 53.4           | 17.9  | 24.8           | 33.1           | 33.5  | 20.5                    | 20.3           |
| Lithuania                         | 51.7           | 69.0           | 33.5  | 80.3           | 91.8           | 14.3  | -28.6                   | -22.8          |
| Luxembourg                        | 35.7           | 7.5            | -79.0   | 28.2           | 40.7           | 44.3  | 7.5                     | -33.2          |
| Malta                             | 60.9           | 21.8           | -64.2   | 26.5           | 89.6           | 238.1   | 34.4                    | -67.8          |
| Netherlands                       | 703.5          | 741.8          | 5.4   | 1162.0         | 1494.6         | 28.6  | -458.5                  | -752.8         |
| Poland                            | 704.7          | 710.3          | 0.8   | 875.4          | 1093.5         | 24.9  | -170.7                  | -383.2         |
| Portugal                          | 162.8          | 358.1          | 120.0   | 97.0           | 137.8          | 42.1  | 65.8                    | 220.3          |
| Romania                           | 3781.1         | 3274.3         | -13.4   | 3161.5         | 3260.6         | 3.1   | 619.6                   | 13.7           |
| Slovakia                          | 216.9          | 246.7          | 13.7  | 549.2          | 644.5          | 17.4  | -332.3                  | -397.8         |
| Slovenia                          | 174.4          | 366.1          | 109.9   | 337.3          | 315.4          | -6.5  | -162.9                  | 50.7           |
| Spain                             | 1063.2         | 1055.2         | -0.8  | 2422.1         | 2205.0         | -9.0  | -1358.9                 | -1149.8        |
| Sweden                            | 205.1          | 183.8          | -10.4   | 287.0          | 259.4          | -9.6  | -81.9                   | -75.6          |
| United Kingdom                    | 724.4          | 778.9          | 7.5   | 712.9          | 715.0          | 0.3   | 11.5                    | 63.9           |
| Not specified                     | 67.3           | 44.3           | -34.2   | 35.2           | 36.8           | 4.5   | 32.1                    | 7.5            |

<sup>1</sup> Partner country:

- In case of exports (or dispatches) is the country (or Member State) of final destination of the goods
- In case of imports (or arrivals) is the country (or Member State) of consignment of the goods.



**Table 3**

**Exports, imports and trade balance of Bulgaria by groups of countries and main partner countries<sup>1</sup> in 2011 and 2012**

(Continue)

| Countries and groups of countries | Exports - FOB  |                |   | Imports - CIF  |                |   | Trade balance - FOB/CIF |                |
|-----------------------------------|----------------|----------------|---|----------------|----------------|---|-------------------------|----------------|
|                                   | 2011           | 2012           | Change compared to the same period of the previous year - % | 2011           | 2012           | Change compared to the same period of the previous year - % | 2011                    | 2012           |
|                                   | Million Levs   |                |   | Million Levs   |                |   | Million Levs            |                |
| <b>Non EU countries</b>           | <b>14981.5</b> | <b>16843.1</b> | <b>12.4</b>   | <b>18594.8</b> | <b>20593.7</b> | <b>10.7</b>   | <b>-3613.3</b>          | <b>-3750.6</b> |
| <b>CIS<sup>2</sup></b>            | <b>1941.9</b>  | <b>1987.8</b>  | <b>2.4</b>  | <b>10201.6</b> | <b>11862.0</b> | <b>16.3</b>   | <b>-8259.7</b>          | <b>-9874.2</b> |
| of which:                         |                |                |   |                |                |   |                         |                |
| Kazakhstan                        | 43.9           | 59.8           | 36.2  | 137.2          | 77.3           | -43.7   | -93.3                   | -17.5          |
| Russian Federation                | 1060.3         | 1100.2         | 3.8   | 8071.8         | 10363.0        | 28.4  | -7011.5                 | -9262.8        |
| Ukraine                           | 565.0          | 479.1          | -15.2   | 1837.9         | 1253.5         | -31.8   | -1272.9                 | -774.4         |
| <b>OECD<sup>3</sup></b>           | <b>4843.7</b>  | <b>5677.6</b>  | <b>17.2</b>   | <b>3735.5</b>  | <b>3664.0</b>  | <b>-1.9</b>   | <b>1108.2</b>           | <b>2013.6</b>  |
| of which:                         |                |                |   |                |                |   |                         |                |
| Canada                            | 169.9          | 207.3          | 22.0  | 61.0           | 68.3           | 12.0  | 108.9                   | 139.0          |
| Israel                            | 108.0          | 163.4          | 51.3  | 342.7          | 112.2          | -67.3   | -234.7                  | 51.2           |
| Japan                             | 45.1           | 47.4           | 5.1   | 134.0          | 124.0          | -7.5  | -88.9                   | -76.6          |
| Korea, Republic of                | 188.7          | 228.9          | 21.3  | 234.2          | 183.4          | -21.7   | -45.5                   | 45.5           |
| Turkey                            | 3389.6         | 3828.9         | 13.0  | 2164.5         | 2324.9         | 7.4   | 1225.1                  | 1504.0         |
| United States                     | 518.2          | 725.3          | 40.0  | 384.9          | 338.2          | -12.1   | 133.3                   | 387.1          |
| <b>EFTA<sup>4</sup></b>           | <b>318.1</b>   | <b>376.9</b>   | <b>18.5</b>   | <b>380.4</b>   | <b>423.3</b>   | <b>11.3</b>   | <b>-62.3</b>            | <b>-46.4</b>   |
| of which:                         |                |                |   |                |                |   |                         |                |
| Norway                            | 61.9           | 60.0           | -3.1  | 22.2           | 15.4           | -30.6   | 39.7                    | 44.6           |
| Switzerland                       | 245.9          | 307.8          | 25.2  | 354.8          | 407.3          | 14.8  | -108.9                  | -99.5          |

<sup>1</sup> Partner country:

- In case of exports (or dispatches) is the country (or Member State) of final destination of the goods

- In case of imports (or arrivals) is the country (or Member State) of consignment of the goods.

<sup>2</sup> CIS includes: Azerbaijan; Armenia; Belarus; Kazakhstan; Kyrgyz, Republic; Moldova, Republic of; Russian Federation; Tajikistan; Turkmenistan; Uzbekistan and Ukraine..

<sup>3</sup> OECD includes: Australia; Virgin Islands (US); United States; Iceland; Canada; Mexico; New Zealand; Norway; Korea, Republic of ; Turkey; Switzerland; Japan; Israel and Chile

<sup>4</sup> EFTA includes: Norway; Switzerland; Iceland and Liechtenstein.



Table 3

Exports, imports and trade balance of Bulgaria by groups of countries and main partner countries<sup>1</sup> in 2011 and 2012

(Continue and end)

| Countries and groups of countries                 | Exports - FOB |        |   | Imports - CIF |        |   | Trade balance - FOB/CIF |        |
|---|---------------|--------|---|---------------|--------|---|-------------------------|--------|
|   | 2011          | 2012   | Change compared to the same period of the previous year - % | 2011          | 2012   | Change compared to the same period of the previous year - % | 2011                    | 2012   |
|   | Million Levs  |        |   | Million Levs  |        |   | Million Levs            |        |
| <b>Countries not included in the upper groups</b> |               |        |   |               |        |   |                         |        |
| Albania   | 101.1         | 97.9   | -3.2  | 33.9          | 37.1   | 9.4   | 67.2                    | 60.8   |
| Algeria   | 93.1          | 113.0  | 21.4  | 43.4          | 0.0    | -100.0  | 49.7                    | 113.0  |
| Bosnia and Herzegovina                            | 80.5          | 68.6   | -14.8   | 15.2          | 31.1   | 104.6   | 65.3                    | 37.5   |
| Brazil  | 57.8          | 67.6   | 17.0  | 188.6         | 281.1  | 49.0  | -130.8                  | -213.5 |
| China   | 574.4         | 1163.7 | 102.6   | 1327.6        | 1483.0 | 11.7  | -753.2                  | -319.3 |
| Croatia   | 164.3         | 154.0  | -6.3  | 53.3          | 59.4   | 11.4  | 111.0                   | 94.6   |
| Egypt   | 333.9         | 335.8  | 0.6   | 149.7         | 112.1  | -25.1   | 184.2                   | 223.7  |
| Former Yugoslav Republic of Macedonia             | 902.2         | 768.0  | -14.9   | 490.2         | 493.4  | 0.7   | 412.0                   | 274.6  |
| Georgia   | 450.0         | 557.6  | 23.9  | 384.0         | 336.2  | -12.4   | 66.0                    | 221.4  |
| Gibraltar   | 1221.7        | 1432.0 | 17.2  | 0.1           | 0.0    | -100.0  | 1221.6                  | 1432.0 |
| Hong Kong   | 90.6          | 98.7   | 8.9   | 92.8          | 113.0  | 21.8  | -2.2                    | -14.3  |
| India   | 125.0         | 66.8   | -46.6   | 119.6         | 146.8  | 22.7  | 5.4                     | -80.0  |
| Iraq  | 175.5         | 394.5  | 124.8   | 0.3           | 0.1    | -66.7   | 175.2                   | 394.4  |
| Jordan  | 22.8          | 40.9   | 79.4  | 94.8          | 164.6  | 73.6  | -72.0                   | -123.7 |
| Lebanon   | 64.0          | 137.4  | 114.7   | 12.3          | 18.9   | 53.7  | 51.7                    | 118.5  |
| Namibia   | 301.8         | 395.5  | 31.0  | 0.1           | 0.0    | 0.0   | 301.7                   | 395.5  |
| Peru  | 4.4           | 6.4    | 45.5  | 119.0         | 162.6  | 36.6  | -114.6                  | -156.2 |
| Saudi Arabia                                      | 425.8         | 229.9  | -46.0   | 22.9          | 17.4   | -24.0   | 402.9                   | 212.5  |
| Serbia  | 935.7         | 865.2  | -7.5  | 496.5         | 494.8  | -0.3  | 439.2                   | 370.4  |
| Singapore   | 76.0          | 93.8   | 23.4  | 29.4          | 29.0   | -1.4  | 46.6                    | 64.8   |
| South Africa                                      | 131.9         | 229.5  | 74.0  | 39.7          | 65.4   | 64.7  | 92.2                    | 164.1  |
| Syrian Arab Republic                              | 58.5          | 37.9   | -35.2   | 72.5          | 69.0   | -4.8  | -14.0                   | -31.1  |
| Tunisia   | 156.3         | 153.8  | -1.6  | 18.2          | 11.9   | -34.6   | 138.1                   | 141.9  |
| Taiwan  | 42.1          | 47.7   | 13.3  | 113.5         | 126.6  | 11.5  | -71.4                   | -78.9  |
| United Arab Emirates                              | 111.5         | 307.4  | 175.7   | 69.4          | 106.4  | 53.3  | 42.1                    | 201.0  |
| Viet Nam  | 22.7          | 35.6   | 56.8  | 37.5          | 61.6   | 64.3  | -14.8                   | -26.0  |

<sup>1</sup> Partner country:

- In case of exports (or dispatches) is the country (or Member State) of final destination of the goods
- In case of imports (or arrivals) is the country (or Member State) of consignment of the goods.



**Exports, imports and trade balance of Bulgaria by sections of SITC, rev. 4 in 2011 and 2012**

| Sections by SITC                                  | Exports - FOB  |                |   | Imports - CIF  |                |   | Trade balance - FOB/CIF |                |
|---|----------------|----------------|---|----------------|----------------|---|-------------------------|----------------|
|   | 2011           | 2012           | Change compared to the same period of the previous year - % | 2011           | 2012           | Change compared to the same period of the previous year - % | 2011                    | 2012           |
|   | Million Levs   |                |   | Million Levs   |                |   | Million Levs            |                |
| <b>Total</b>                                      | <b>39633.6</b> | <b>40622.9</b> | <b>2.5</b>  | <b>45778.5</b> | <b>49793.7</b> | <b>8.8</b>  | <b>-6144.9</b>          | <b>-9170.8</b> |
| <b>of which EU</b>                                | <b>24652.1</b> | <b>23779.8</b> | <b>-3.5</b>   | <b>27183.7</b> | <b>29200.0</b> | <b>7.4</b>  | <b>-2531.6</b>          | <b>-5420.2</b> |
| Food and live animals                             | 3796.7         | 4135.3         | 8.9   | 3449.8         | 3497.2         | 1.4   | 346.9                   | 638.1          |
| of which EU                                       | 2924.5         | 3183.2         | 8.8   | 2837.2         | 3029.1         | 6.8   | 87.3                    | 154.1          |
| Beverages and tobacco                             | 797.7          | 877.4          | 10.0  | 553.4          | 629.0          | 13.7  | 244.3                   | 248.4          |
| of which EU                                       | 322.9          | 315.5          | -2.3  | 399.1          | 460.8          | 15.5  | -76.2                   | -145.3         |
| Crude materials, inedible (except fuel)           | 3978.2         | 3565.6         | -10.4   | 4540.0         | 4398.7         | -3.1  | -561.8                  | -833.1         |
| of which EU                                       | 2317.4         | 1687.7         | -27.2   | 2936.9         | 2687.0         | -8.5  | -619.5                  | -999.3         |
| Mineral fuel, lubricants and related materials    | 5452.2         | 6746.6         | 23.7  | 10521.1        | 12402.6        | 17.9  | -5068.9                 | -5656.0        |
| of which EU                                       | 1254.0         | 1531.1         | 22.1  | 1289.8         | 1836.5         | 42.4  | -35.8                   | -305.4         |
| Animals and vegetable oils, fats and waxes        | 294.9          | 303.0          | 2.7   | 212.0          | 245.5          | 15.8  | 82.9                    | 57.5           |
| of which EU                                       | 225.5          | 230.8          | 2.4   | 169.1          | 177.9          | 5.2   | 56.4                    | 52.9           |
| Chemical and related products n.e.c.              | 3160.6         | 3371.8         | 6.7   | 5197.7         | 5711.1         | 9.9   | -2037.1                 | -2339.3        |
| of which EU                                       | 1461.7         | 1601.7         | 9.6   | 4046.1         | 4373.2         | 8.1   | -2584.4                 | -2771.5        |
| Manufactured goods classified chiefly by material | 9805.5         | 9275.0         | -5.4  | 7730.6         | 7766.9         | 0.5   | 2074.9                  | 1508.1         |
| of which EU                                       | 6523.7         | 5805.1         | -11.0   | 4896.1         | 4952.4         | 1.1   | 1627.6                  | 852.7          |



**Table 4**

**Exports, imports and trade balance of Bulgaria by sections of SITC, rev. 4 in 2011 and 2012**

(Continue and end)

| Sections by SITC                    | Exports - FOB |        |   | Imports - CIF |         |   | Trade balance - FOB/CIF |         |
|-------------------------------------|---------------|--------|---|---------------|---------|---|-------------------------|---------|
|                                     | 2011          | 2012   | Change compared to the same period of the previous year - % | 2011          | 2012    | Change compared to the same period of the previous year - % | 2011                    | 2012    |
|                                     | Million Levs  |        |   | Million Levs  |         |   | Million Levs            |         |
| Machinery and transport equipment   | 6695.2        | 6741.4 | 0.7   | 10504.2       | 11990.2 | 14.1  | -3809.0                 | -5248.8 |
| of which EU                         | 4918.3        | 4822.6 | -1.9  | 8247.7        | 9278.8  | 12.5  | -3329.4                 | -4456.2 |
| Miscellaneous manufactured articles | 5601.9        | 5517.9 | -1.5  | 2938.7        | 3033.6  | 3.2   | 2663.2                  | 2484.3  |
| of which EU                         | 4684.8        | 4579.3 | -2.3  | 2265.6        | 2301.1  | 1.6   | 2419.2                  | 2278.2  |
| Commodities and transactions n.e.c. | 50.7          | 88.9   | 75.3  | 131.0         | 118.9   | -9.2  | -80.3                   | -30.0   |
| of which EU                         | 19.3          | 22.8   | 18.1  | 96.1          | 103.2   | 7.4   | -76.8                   | -80.4   |