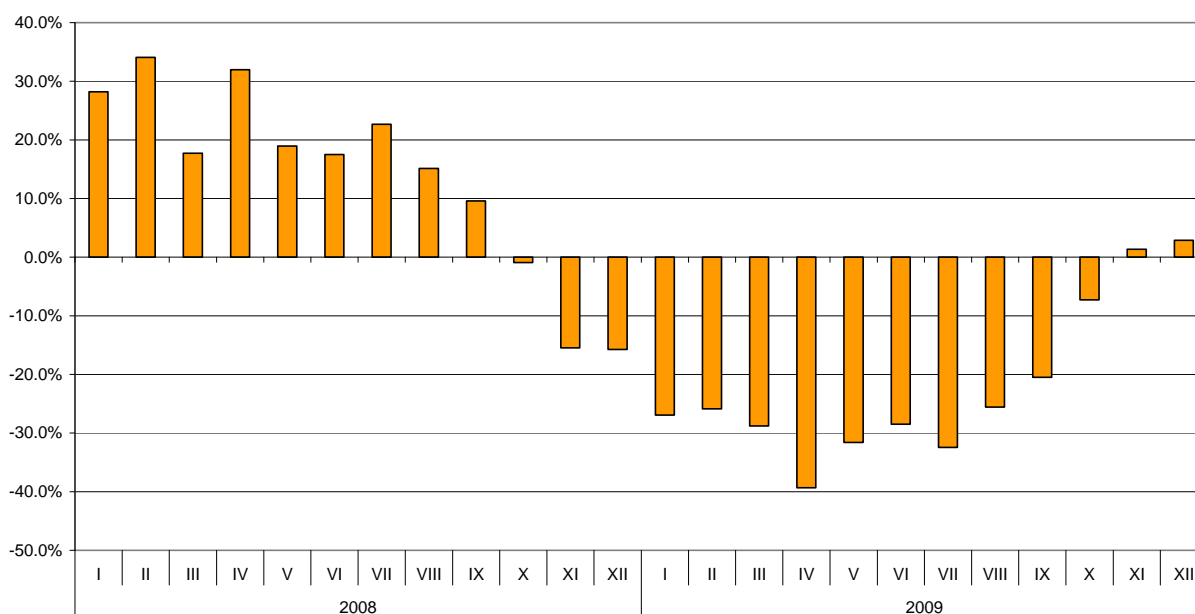




FOREIGN TRADE OF BULGARIA FOR 2009 - FINAL DATA

In 2009 the exported goods were for **22.9 billion levs** and compared to 2008 the exports fell by 23.1% (Table 1.1 and 1.2). Compared to the same month of the previous year the largest decrease was observed in April (with 39.3%) and the largest growth in December (with 2.9%).

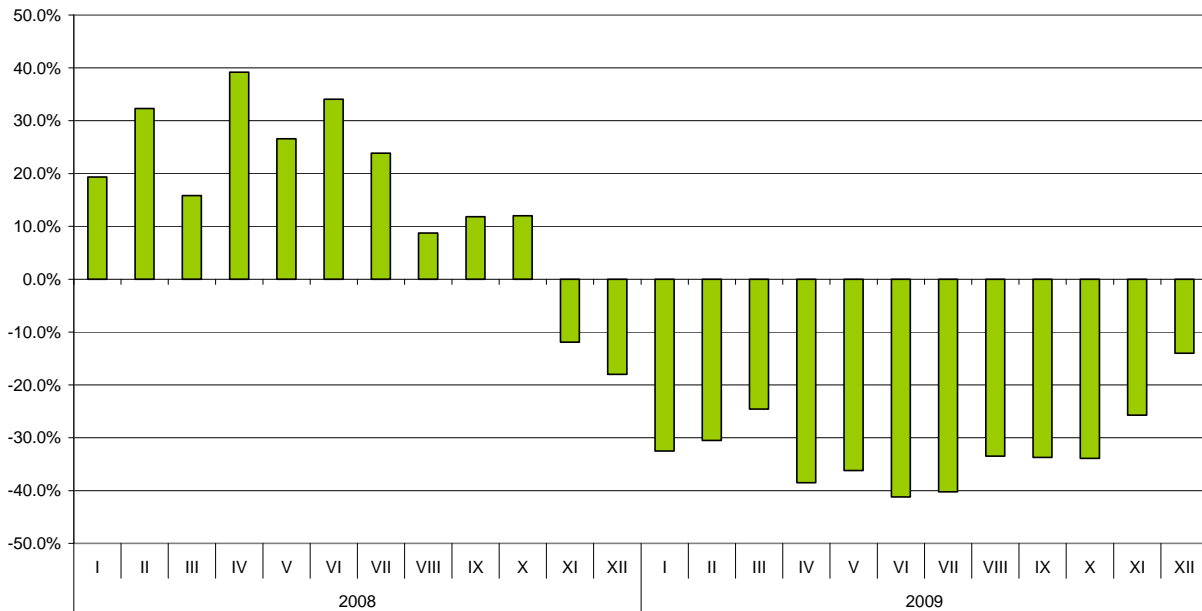
**Nominal growth of exports for the period 2008 - 2009
(compared to the same month of the previous year)**



The imported goods for 2009 were for **33 billion levs (CIF prices)** or 32.7% less than in 2008 (Table 1.1 and 1.2). In all the months of 2009 a decrease of imports was observed compared to the corresponding month of the previous year and the largest fall was in June - with 41.2%. The trend the imports to be higher than the exports continued in 2009.



**Nominal growth of imports for the period 2008 - 2009
(compared to the same month of the previous year)**



Foreign trade balance (exports FOB - import CIF) was negative in 2009 and amounted to 10.1 billion levs, which was over 9 billion levs less than the balance in 2008 (Table 1.1 and 1.2). At FOB/FOB prices (after elimination of transport and insurance costs on imports) the negative balance for 2009 amounted to 8.5 billion levs.

The **exports** of Bulgaria in 2009 distributed according to the **Standard International Trade Classification** showed an increase in the majority of sections compared to the same period of 2008 (Table 3). The largest fall was recorded in sections “Mineral fuel, lubricants and related materials” (39.5%) and “Manufactured goods classified chiefly by material” (33.1%). A growth of exports was observed in “Beverages and tobacco” and “Animals and vegetable oils, fats and waxes”.

On **imports** the largest fall was in sections “Manufactured goods classified chiefly by material” (40.2%), “Machinery and transport equipment” (38.9%) and „Mineral fuel, lubricants and related materials” (38.4%).

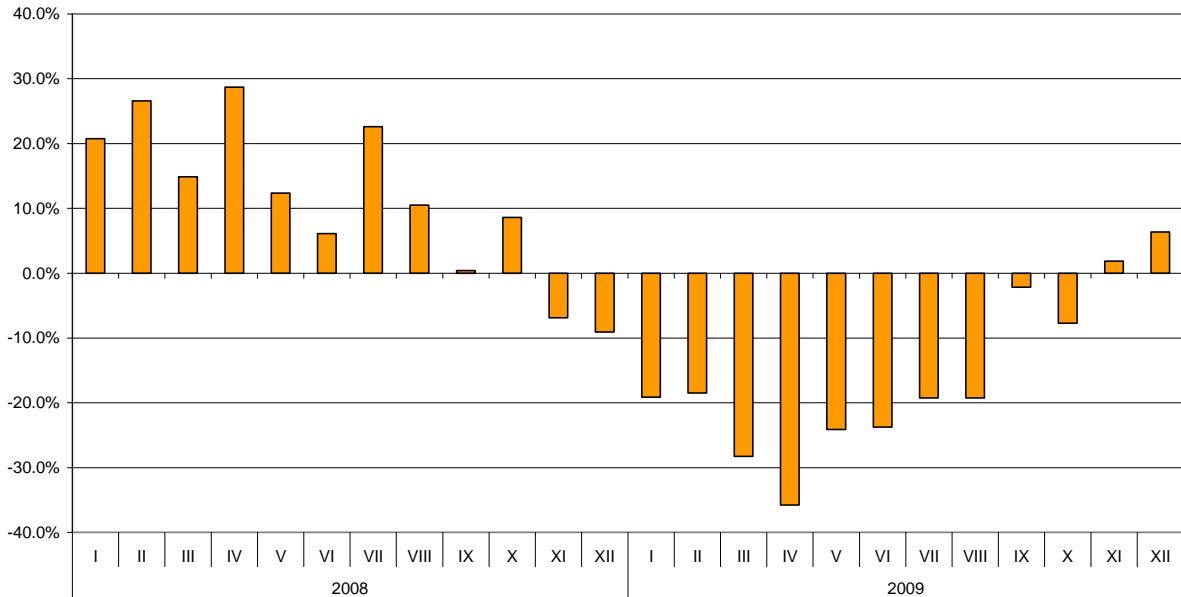
Bulgarian trade with EU

In 2009 the **exports** of Bulgaria to **EU countries** decreased with 16.7% compared to the previous year and amounted to 14.9 billion levs (Table 1.1 and 1.2). The main trade partners of Bulgaria were Germany, Greece, Italy, Romania, Belgium and France that formed over 75.4% from the exports to EU (Table 2). The exports to Luxembourg and



www.nsi.bg
 Portugal recorded growth with 170% and 58% respectively and for the rest of the countries fall was observed.

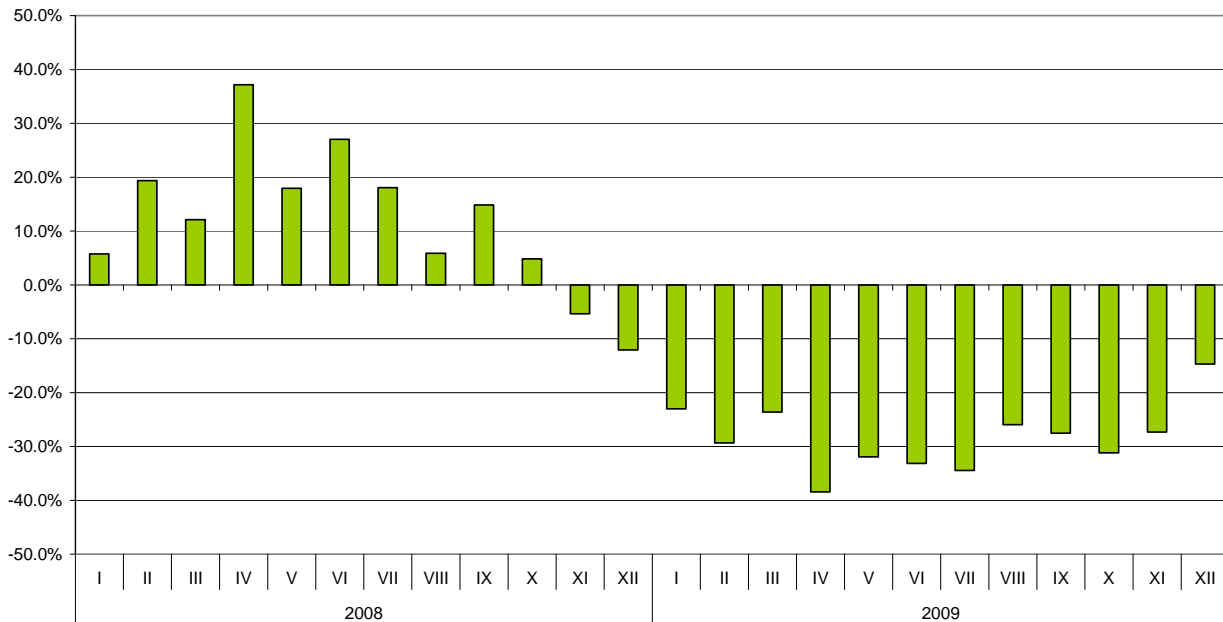
Nominal growth of exports for EU for the period 2008 - 2009
(compared to the same month of the previous year)



The **Bulgarian imports to EU countries** for 2009 decreased by 28.9% compared to the previous year and amounted to 19.8 billion levs (Table 1.1 и 1.2). The largest fall was recorded in the imports from Sweden, Luxembourg and Belgium. Concerning our major EU trade partners the most notable decrease was observed in imports from Italy (34.8%), Austria (33.7%), Romania ((33%) and Germany (30.6%). The imports from Malta, Portugal and Estonia increased.



**Nominal growth of imports from EU for the period 2008 - 2009
(compared to the same month of the previous year)**



Foreign trade balance (exports FOB - import CIF) of Bulgaria with **EU countries** was negative and amounted to 4.9 billion leva in 2009 (Table 1.1).

The **exports** of Bulgaria to **EU** distributed according to the **Standard International Trade Classification** showed that in 2009 compared to 2008 more goods were exported from sections “Animals and vegetable oils, fats and waxes” (with 39.2%), “Beverages and tobacco” (with 25.1%) and “Food and live animals” (with 23.8%) (Table 3). The largest fall was observed in “Manufactured goods classified chiefly by material” (38%) and “Chemical and related products n.e.c.” (32.8%).

On **imports** from **EU** a decrease in all the sections was observed and the most notable was the fall of “Machinery and transport equipment” – with 39%.

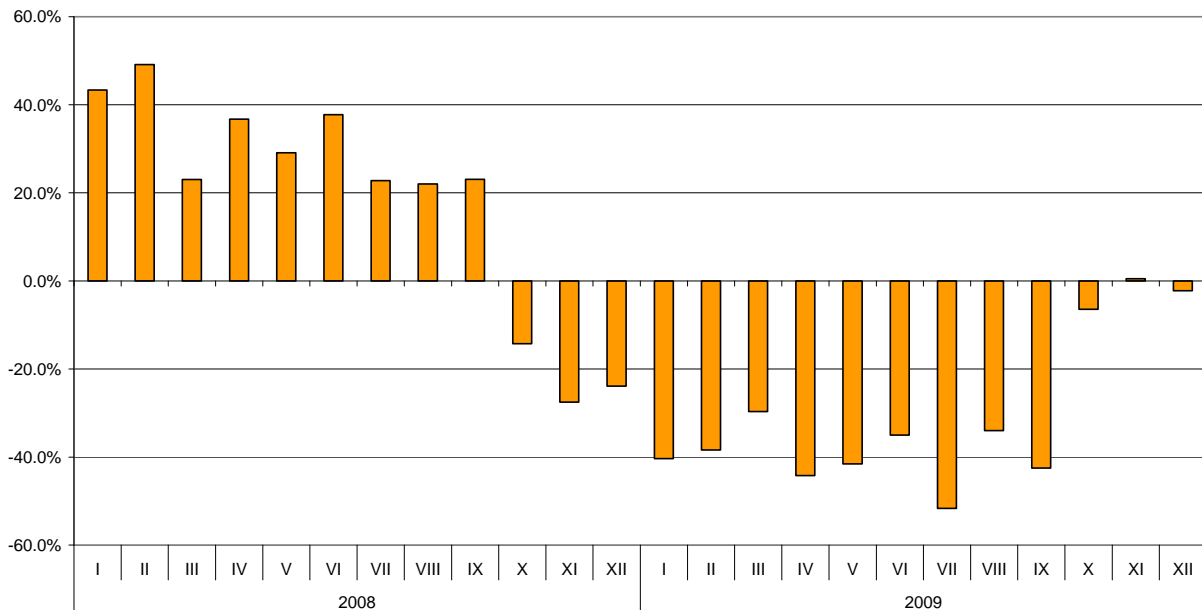
Bulgarian trade with third countries

In 2009 the Bulgarian **exports** to **third countries** decreased with 32.6% compared to the previous year and amounted to 8 billion leva (Table 1.1 and 1.2). The main trade partners of Bulgaria were Turkey, Serbia, Russia, The Former Yugoslav Republic of Macedonia, Singapore and USA, that formed over 52% of the total exports to non EU countries (Table.2). Exported goods to Serbia decreased with 44% and those to Turkey with 36.8%. Exports to The Former Yugoslav Republic of Macedonia and Russia reported fall with



30.2% and 28.9% respectively. A growth of the exports to Egypt (with 125%) and Singapore (with 17.2%) was observed.

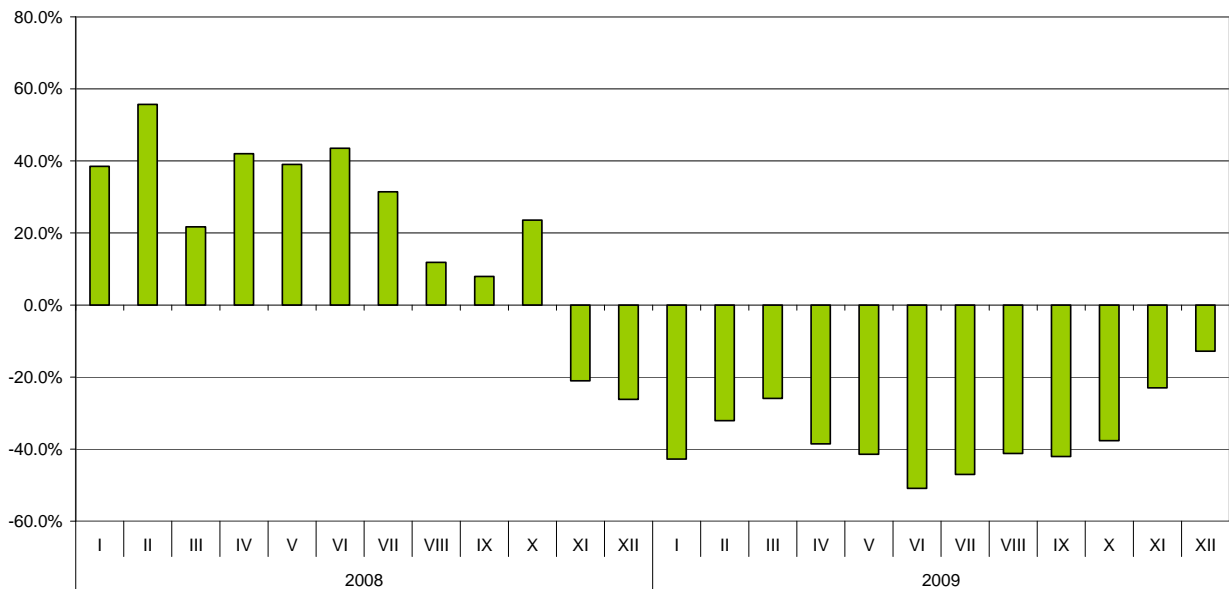
**Nominal growth of exports for non EU countries for the period 2008 - 2009
(compared to the same month of the previous year)**



Bulgarian **imports from third countries** for 2009 decreased by 37.8%, compared to the previous year, and amounted to 13.2 billion levs (Tables 1.1 and 1.2). The most notable fall was reported on the imports from Bosnia and Herzegovina (68.8%), Ukraine (55.9%) and USA (46.8%). The imports from Kazakhstan, South Africa, Norway and Saudi Arabia increased.



Nominal growth of imports from non EU countries for the period 2008 - 2009
(compared to the same month of the previous year)



The Trade balance of Bulgaria (export FOB - import CIF) with **third countries** was negative and amounted to 5.2 billion leva (Table 1.1).

Table 1.1

EXPORTS, IMPORTS AND TRADE BALANCE FOR 2008 AND 2009 BY MONTHS
FINAL DATA

Million Levs

MONTHS	EXPORTS-FOB			IMPORTS-CIF			IMPORTS-FOB			TRADE BALANCE FOB/CIF			TRADE BALANCE FOB/FOB		
	TOTAL	EU	Non EU	TOTAL	EU	Non EU	TOTAL	EU	Non EU	TOTAL	EU	Non EU	TOTAL	EU	Non EU
I 2008	2179.0	1376.2	802.8	3560.4	1849.5	1710.9	3370.9	1761.5	1609.4	-1381.4	-473.3	-908.1	-1191.9	-385.3	-806.6
II 2008	2376.0	1498.5	877.5	3728.7	2166.4	1562.3	3534.4	2066.0	1468.4	-1352.7	-667.9	-684.8	-1158.4	-567.5	-590.9
III 2008	2590.3	1634.5	955.8	3899.9	2315.6	1584.3	3701.7	2207.8	1493.9	-1309.6	-681.1	-628.5	-1111.4	-573.3	-538.1
I - III 2008	7145.3	4509.2	2636.1	11189.0	6331.5	4857.5	10607.0	6035.3	4571.7	-4043.7	-1822.3	-2221.4	-3461.7	-1526.1	-1935.6
IV 2008	2684.0	1557.5	1126.5	4405.2	2551.4	1853.8	4176.5	2431.5	1745.0	-1721.2	-993.9	-727.3	-1492.5	-874.0	-618.5
V 2008	2588.7	1485.0	1103.7	4385.0	2416.3	1968.7	4160.6	2308.1	1852.5	-1796.3	-931.3	-865.0	-1571.9	-823.1	-748.8
VI 2008	2734.8	1581.7	1153.1	4763.6	2596.4	2167.2	4515.4	2479.4	2036.0	-2028.8	-1014.7	-1014.1	-1780.6	-897.7	-882.9
IV-VI 2008	8007.5	4624.2	3383.3	13553.8	7564.1	5989.7	12852.5	7219.0	5633.5	-5546.3	-2939.9	-2606.4	-4845.0	-2594.8	-2250.2
I-VI 2008	15152.8	9133.4	6019.4	24742.8	13895.6	10847.2	23459.5	13254.3	10205.2	-9590.0	-4762.2	-4827.8	-8306.7	-4120.9	-4185.8
VII 2008	2980.5	1764.8	1215.7	4691.8	2539.5	2152.3	4449.0	2425.0	2024.0	-1711.3	-774.7	-936.6	-1468.5	-660.2	-808.3
VIII 2008	2579.5	1480.1	1099.4	3881.2	1976.8	1904.4	3676.5	1883.7	1792.8	-1301.7	-496.7	-805.0	-1097.0	-403.6	-693.4
IX 2008	2570.1	1402.5	1167.6	4145.5	2380.0	1765.5	3934.5	2268.7	1665.8	-1575.4	-977.5	-597.9	-1364.4	-866.2	-499.2
VII-IX 2008	8130.1	4647.4	3482.7	12718.5	6896.3	5822.2	12060.0	6577.4	5482.6	-4588.4	-2248.9	-2339.5	-3929.9	-1930.0	-1999.9
I-IX 2008	23282.9	13780.8	9502.1	37461.3	20791.9	16669.4	35519.5	19831.7	15687.8	-14178.4	-7011.1	-7167.3	-12236.6	-6050.9	-6185.7
X 2008	2528.2	1615.2	913.0	4634.4	2675.8	1958.6	4391.0	2551.4	1839.6	-2106.2	-1060.6	-1045.6	-1862.8	-936.2	-926.6
XI 2008	2096.5	1350.9	745.6	3744.8	2343.6	1401.2	3558.1	2232.3	1325.8	-1648.3	-992.7	-655.6	-1461.6	-881.4	-580.2
XII 2008	1828.5	1086.3	742.2	3238.2	2015.1	1223.1	3082.3	1920.2	1162.1	-1409.7	-928.8	-480.9	-1253.8	-833.9	-419.9
X-XII 2008	6453.2	4052.4	2400.8	11617.4	7034.5	4582.9	11031.4	6703.9	4327.5	-5164.2	-2982.1	-2182.1	-4578.2	-2651.5	-1926.7
I - XII 2008	29736.1	17833.2	11902.9	49078.7	27826.4	21252.3	46550.9	26535.6	20015.3	-19342.6	-9993.2	-9349.4	-16814.8	-8702.4	-8112.4
I 2009	1592.0	1113.0	479.0	2402.5	1423.7	978.8	2272.0	1353.5	918.5	-810.5	-310.7	-499.8	-680.0	-240.5	-439.5
II 2009	1761.9	1221.6	540.3	2591.2	1530.8	1060.4	2459.1	1456.4	1002.7	-829.3	-309.2	-520.1	-697.2	-234.8	-462.4
III 2009	1844.9	1172.8	672.1	2942.5	1769.0	1173.5	2796.8	1682.5	1114.3	-1097.6	-596.2	-501.4	-951.9	-509.7	-442.2
I - III 2009	5198.8	3507.4	1691.4	7936.2	4723.5	3212.7	7527.9	4492.4	3035.5	-2737.4	-1216.1	-1521.3	-2329.1	-985.0	-1344.1
IV 2009	1628.8	1000.5	628.3	2709.2	1570.4	1138.8	2576.6	1499.7	1076.9	-1080.4	-569.9	-510.5	-947.8	-499.2	-448.6
V 2009	1771.5	1126.6	644.9	2797.8	1645.2	1152.6	2652.4	1566.4	1086.0	-1026.3	-518.6	-507.7	-880.9	-439.8	-441.1
VI 2009	1955.0	1205.9	749.1	2799.7	1735.3	1064.4	2656.9	1653.0	1003.9	-844.7	-529.4	-315.3	-701.9	-447.1	-254.8
IV-VI 2009	5355.3	3333.0	2022.3	8306.7	4950.9	3355.8	7885.9	4719.1	3166.8	-2951.4	-1617.9	-1333.5	-2530.6	-1386.1	-1144.5
I-VI 2009	10554.1	6840.4	3713.7	16242.9	9674.4	6568.5	15413.8	9211.5	6202.3	-5688.8	-2834.0	-2854.8	-4859.7	-2371.1	-2488.6
VII 2009	2012.9	1425.3	587.6	2803.8	1664.1	1139.7	2663.6	1587.6	1076.0	-790.9	-238.8	-552.1	-650.7	-162.3	-488.4
VIII 2009	1920.4	1195.0	725.4	2582.8	1463.9	1118.9	2450.5	1398.3	1052.2	-662.4	-268.9	-393.5	-530.1	-203.3	-326.8
IX 2009	2043.4	1372.1	671.3	2747.3	1724.4	1022.9	2612.0	1646.9	965.1	-703.9	-352.3	-351.6	-568.6	-274.8	-293.8
VII-IX 2009	5976.7	3992.4	1984.3	8133.9	4852.4	3281.5	7726.1	4632.8	3093.3	-2157.2	-860.0	-1297.2	-1749.4	-640.4	-1109.0
I-IX 2009	16530.8	10832.8	5698.0	24376.8	14526.8	9850.0	23139.9	13844.3	9295.6	-7846.0	-3694.0	-4152.0	-6609.1	-3011.5	-3597.6
X 2009	2344.5	1490.4	854.1	3062.9	1841.4	1221.5	2909.4	1757.2	1152.2	-718.4	-351.0	-367.4	-564.9	-266.8	-298.1
XI 2009	2125.4	1376.2	749.2	2781.1	1702.4	1078.7	2642.9	1624.3	1018.6	-655.7	-326.2	-329.5	-517.5	-248.1	-269.4
XII 2009	1881.1	1155.4	725.7	2785.2	1719.1	1066.1	2644.0	1638.4	1005.6	-904.1	-563.7	-340.4	-762.9	-483.0	-279.9
X-XII 2009	6351.0	4022.0	2329.0	8629.2	5262.9	3366.3	8196.3	5019.9	3176.4	-2278.2	-1240.9	-1037.3	-1845.3	-997.9	-847.4
I - XII 2009	22881.8	14854.8	8027.0	33006.0	19789.7	13216.3	31336.2	18864.2	12472.0	-10124.2	-4934.9	-5189.3	-8454.4	-4009.4	-4445.0

GROWTH OF EXPORTS AND IMPORTS FOR 2008 AND 2009 COMPARED TO THE SAME MONTH OF THE PREVIOUS YEAR
(Per cent)

MONTHS	EXPORTS-FOB			IMPORTS-CIF			IMPORTS-FOB		
	TOTAL	EU	Non EU	TOTAL	EU	Non EU	TOTAL	EU	Non EU
I	-26.9	-19.1	-40.3	-32.5	-23.0	-42.8	-32.6	-23.2	-42.9
II	-25.8	-18.5	-38.4	-30.5	-29.3	-32.1	-30.4	-29.5	-31.7
III	-28.8	-28.2	-29.7	-24.5	-23.6	-25.9	-24.4	-23.8	-25.4
I - III	-27.2	-22.2	-35.8	-29.1	-25.4	-33.9	-29.0	-25.6	-33.6
IV	-39.3	-35.8	-44.2	-38.5	-38.4	-38.6	-38.3	-38.3	-38.3
V	-31.6	-24.1	-41.6	-36.2	-31.9	-41.5	-36.2	-32.1	-41.4
VI	-28.5	-23.8	-35.0	-41.2	-33.2	-50.9	-41.2	-33.3	-50.7
IV-VI	-33.1	-27.9	-40.2	-38.7	-34.5	-44.0	-38.6	-34.6	-43.8
I-VI	-30.3	-25.1	-38.3	-34.4	-30.4	-39.4	-34.3	-30.5	-39.2
VII	-32.5	-19.2	-51.7	-40.2	-34.5	-47.0	-40.1	-34.5	-46.8
VIII	-25.6	-19.3	-34.0	-33.5	-25.9	-41.2	-33.3	-25.8	-41.3
IX	-20.5	-2.2	-42.5	-33.7	-27.5	-42.1	-33.6	-27.4	-42.1
VII-IX	-26.5	-14.1	-43.0	-36.0	-29.6	-43.6	-35.9	-29.6	-43.6
I-IX	-29.0	-21.4	-40.0	-34.9	-30.1	-40.9	-34.9	-30.2	-40.7
X	-7.3	-7.7	-6.5	-33.9	-31.2	-37.6	-33.7	-31.1	-37.4
XI	1.4	1.9	0.5	-25.7	-27.4	-23.0	-25.7	-27.2	-23.2
XII	2.9	6.4	-2.2	-14.0	-14.7	-12.8	-14.2	-14.7	-13.5
X-XII	-1.6	-0.8	-3.0	-25.7	-25.2	-26.5	-25.7	-25.1	-26.6
I-XII	-23.1	-16.7	-32.6	-32.7	-28.9	-37.8	-32.7	-28.9	-37.7

Table2

EXPORTS, IMPORTS AND TRADE BALANCE BY GROUPS OF COUNTRIES AND MAIN TRADE PARTNERS ¹
FOR 2008 AND 2009

(Million Levs)

	Export-FOB			Import-CIF			Trade balance - FOB/CIF	
	2008	2009	Growth (%)	2008	2009	Growth (%)	2008	2009
TOTAL	29736.1	22881.8	-23.1	49078.7	33006.0	-32.7	-19342.6	-10124.2
EU	17833.2	14854.8	-16.7	27826.4	19789.7	-28.9	-9993.2	-4934.9
Austria	611.9	448.9	-26.6	2015.5	1335.4	-33.7	-1403.6	-886.5
Belgium	1755.0	1298.3	-26.0	888.0	557.6	-37.2	867.0	740.7
Cyprus	182.1	106.2	-41.7	70.1	61.9	-11.7	112.0	44.3
Czech Republic	264.3	183.9	-30.4	1070.2	898.6	-16.0	-805.9	-714.7
Denmark	81.0	69.0	-14.8	212.2	203.8	-4.0	-131.2	-134.8
Estonia	10.3	9.0	-12.6	12.1	12.2	0.8	-1.8	-3.2
Finland	55.5	38.1	-31.4	295.6	198.8	-32.7	-240.1	-160.7
France	1218.6	1025.1	-15.9	1649.8	1160.4	-29.7	-431.2	-135.3
Germany	2705.5	2582.5	-4.5	5842.9	4052.7	-30.6	-3137.4	-1470.2
Greece	2949.8	2186.1	-25.9	2596.5	2015.5	-22.4	353.3	170.6
Hungary	278.6	264.4	-5.1	1373.8	1101.7	-19.8	-1095.2	-837.3
Ireland	25.4	15.6	-38.6	130.5	95.6	-26.7	-105.1	-80.0
Italy	2487.7	2136.9	-14.1	3902.1	2544.2	-34.8	-1414.4	-407.3
Latvia	36.1	24.3	-32.7	16.1	15.4	-4.3	20.0	8.9
Lithuania	52.1	37.0	-29.0	48.3	36.2	-25.1	3.8	0.8
Luxembourg	9.1	24.6	170.3	44.1	27.1	-38.5	-35.0	-2.5
Malta	19.7	12.3	-37.6	6.8	14.1	107.4	12.9	-1.8
Netherlands	422.7	362.0	-14.4	1226.6	907.7	-26.0	-803.9	-545.7
Poland	567.8	359.5	-36.7	1046.9	729.1	-30.4	-479.1	-369.6
Portugal	51.7	81.7	58.0	38.5	57.3	48.8	13.2	24.4
Romania	2157.1	1975.5	-8.4	2755.8	1845.8	-33.0	-598.7	129.7
Slovakia	201.3	185.2	-8.0	424.1	379.4	-10.5	-222.8	-194.2
Slovenia	233.9	97.3	-58.4	409.8	280.3	-31.6	-175.9	-183.0
Spain	666.5	734.3	10.2	693.3	534.0	-23.0	-26.8	200.3
Sweden	137.5	128.1	-6.8	361.4	190.4	-47.3	-223.9	-62.3
United Kingdom	624.2	449.4	-28.0	660.0	451.4	-31.6	-35.8	-2.0
Not specified	27.8	19.6	-29.5	35.4	83.1	134.7	-7.6	-63.5
Non EU countries	11902.9	8027.0	-32.6	21252.3	13216.3	-37.8	-9349.4	-5189.3
Central and Eastern European countries	6012.6	4526.9	-24.7	8100.6	5933.0	-26.8	-2088.0	-1406.1
of which:								
Albania	142.6	124.2	-12.9	14.4	9.8	-31.9	128.2	114.4
Bosnia and Herzegovina	102.9	78.8	-23.4	27.2	8.5	-68.8	75.7	70.3
Croatia	248.2	135.0	-45.6	126.1	70.7	-43.9	122.1	64.3
Serbia	1297.6	727.1	-44.0	356.8	281.6	-21.1	940.8	445.5
The former Yugoslav Rep. of Macedonia	670.2	467.8	-30.2	555.8	345.7	-37.8	114.4	122.1
CIS	1663.9	1179.5	-29.1	11449.2	6600.9	-42.3	-9785.3	-5421.4
of which:								
Georgia	257.6	185.7	-27.9	651.9	370.9	-43.1	-394.3	-185.2
Kazakhstan	40.8	33.6	-17.6	3.9	141.8	3535.9	36.9	-108.2
Russian Fed.	807.0	574.1	-28.9	7054.2	4424.0	-37.3	-6247.2	-3849.9
Ukraine	345.2	196.0	-43.2	3590.0	1583.5	-55.9	-3244.8	-1387.5
OECD	3541.8	2414.4	-31.8	4330.1	2809.5	-35.1	-788.3	-395.1
of which:								
Canada	79.2	61.9	-21.8	89.6	98.3	9.7	-10.4	-36.4
Japan	35.1	28.1	-19.9	275.1	148.5	-46.0	-240.0	-120.4
Korea, Rep. of	63.9	42.0	-34.3	144.1	96.4	-33.1	-80.2	-54.4
Turkey	2618.2	1655.6	-36.8	2729.9	1798.3	-34.1	-111.7	-142.7
USA	463.8	357.7	-22.9	527.3	280.4	-46.8	-63.5	77.3
EFTA	232.1	214.4	-7.6	450.9	362.6	-19.6	-218.8	-148.2
of which:								
Norway	70.8	44.2	-37.6	15.3	41.4	170.6	55.5	2.8
Switzerland	156.2	163.9	4.9	417.1	304.3	-27.0	-260.9	-140.4
Countries not included in the upper groups								
Brazil	73.2	25.0	-65.8	366.4	273.6	-25.3	-293.2	-248.6
China	214.4	187.7	-12.5	1478.5	891.7	-39.7	-1264.1	-704.0
Egypt	90.9	204.5	125.0	51.1	44.0	-13.9	39.8	160.5
India	104.4	35.8	-65.7	113.4	97.7	-13.8	-9.0	-61.9
Indonesia	27.2	31.7	16.5	44.0	32.3	-26.6	-16.8	-0.6
Iran	90.6	49.7	-45.1	15.5	14.0	-9.7	75.1	35.7
Israel	82.6	76.2	-7.7	79.3	96.6	21.8	3.3	-20.4
Peru	25.2	1.4	-94.4	300.3	250.9	-16.5	-275.1	-249.5
Saudi Arabia	221.8	37.7	-83.0	4.1	9.3	126.8	217.7	28.4
Singapore	366.8	430.0	17.2	22.6	18.2	-19.5	344.2	411.8
South Africa	18.0	11.9	-33.9	26.7	72.9	173.0	-8.7	-61.0
Syria	341.1	126.8	-62.8	117.5	80.6	-31.4	223.6	46.2
Taiwan	20.6	22.8	10.7	145.3	84.9	-41.6	-124.7	-62.1
United Arab Emirates	325.4	87.1	-73.2	48.4	27.5	-43.2	277.0	59.6
Viet Nam	19.7	20.3	3.0	110.7	71.4	-35.5	-91.0	-51.1

¹ Partner country:

- In case of exports (or dispatches) is the country (or Member State) of final destination of the goods
- In case of imports (or arrivals) is the country (or Member State) of consignment of the goods.

Table 3

**EXPORTS, IMPORTS AND TRADE BALANCE BY SECTIONS OF SITC, rev.4
FOR 2008 AND 2009**

(Million Levs)

Sections by SITC	Export-FOB			Import - CIF			Trade balance - FOB/CIF	
	2008	2009	Growth (%)	2008	2009	Growth (%)	2008	2009
TOTAL	29736.1	22881.8	-23.1	49078.7	33006.0	-32.7	-19342.6	-10124.2
of wich EU	17833.2	14854.8	-16.7	27826.4	19789.7	-28.9	-9993.2	-4934.9
Food and live animals	2424.1	2374.2	-2.1	2645.7	2625.6	-0.8	-221.6	-251.4
of wich EU	1494.7	1850.1	23.8	2021.3	1992.6	-1.4	-526.6	-142.5
Beverages and tobacco	584.3	677.1	15.9	475.0	476.0	0.2	109.3	201.1
of wich EU	288.8	361.4	25.1	366.7	345.5	-5.8	-77.9	15.9
Crude materials, inedible (except fuel)	1934.4	1650.4	-14.7	3290.8	2253.1	-31.5	-1356.4	-602.7
of wich EU	950.2	960.7	1.1	880.3	558.1	-36.6	69.9	402.6
Mineral fuel, lubricants and related materials	4889.5	2956.8	-39.5	10720.8	6599.8	-38.4	-5831.3	-3643.0
of wich EU	1216.4	975.8	-19.8	1385.2	925.0	-33.2	-168.8	50.8
Animals and vegetable oils, fats and waxes	146.0	154.8	6.0	187.2	136.2	-27.2	-41.2	18.6
of wich EU	79.4	110.5	39.2	123.1	91.4	-25.8	-43.7	19.1
Chemical and related products n.e.c.	2386.1	1759.4	-26.3	4316.5	3693.0	-14.4	-1930.4	-1933.6
of wich EU	1058.8	711.2	-32.8	3442.1	2945.6	-14.4	-2383.3	-2234.4
Manufactured goods classified chiefly by material	7872.0	5263.7	-33.1	9512.8	5684.4	-40.2	-1640.8	-420.7
of wich EU	5656.3	3507.3	-38.0	5506.7	3806.7	-30.9	149.6	-299.4
Machinery and transport equipment	4679.8	3853.3	-17.7	14486.4	8844.7	-38.9	-9806.6	-4991.4
of wich EU	3036.2	2787.3	-8.2	11589.8	7066.9	-39.0	-8553.6	-4279.6
Miscellaneous manufactured articles	4800.2	4166.0	-13.2	3393.2	2613.4	-23.0	1407.0	1552.6
of wich EU	4048.4	3584.1	-11.5	2480.1	1990.1	-19.8	1568.3	1594.0
Commodities and transactions n.e.c.	19.7	26.1	32.5	50.3	79.8	58.6	-30.6	-53.7
of wich EU	4.0	6.4	60.0	31.1	67.8	118.0	-27.1	-61.4