



Construction Production Indices in November 2009^{1,2}

According to the preliminary data of the National Statistical Institute, the construction production in November 2009 was 21.9% less compared to the same month of the previous year. A decreased of 8.5% was registered in the production of civil engineering production. The building construction drop by 28.3% and because of its significant relative share (62.3%) in the total construction production influenced more essential on the overall Construction Production Index.

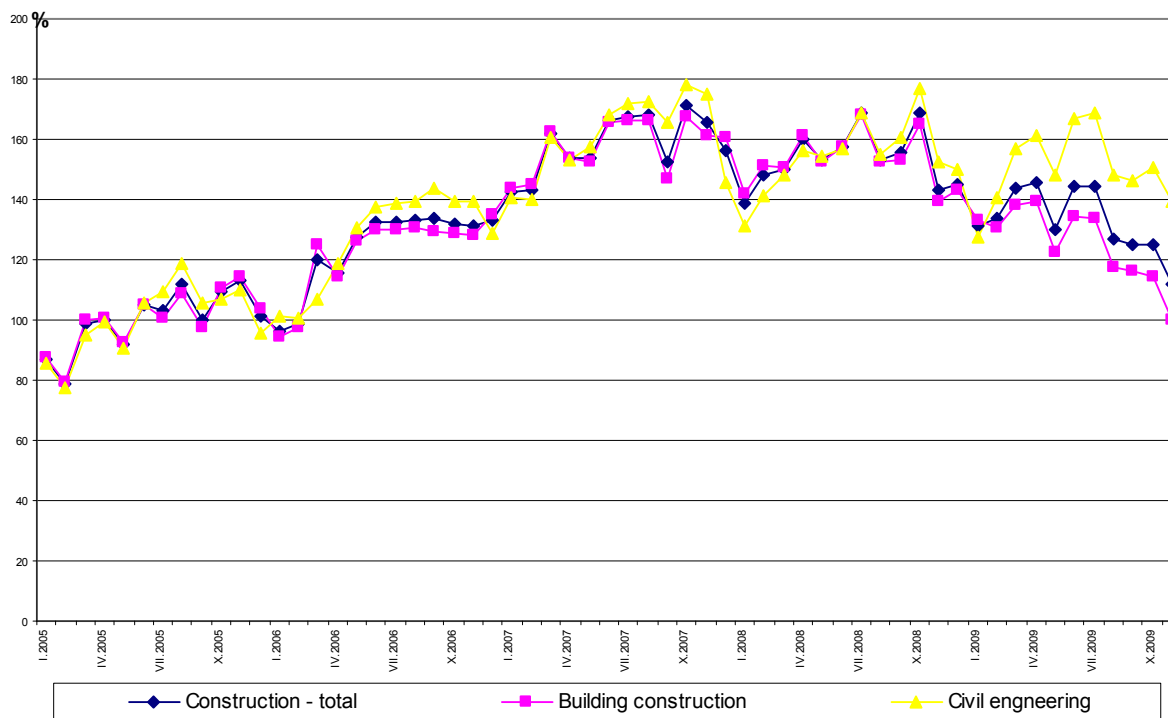
Construction Production Indices in November 2009 (Preliminary data)

	November			January - November
	2005 = 100	Previous month = 100	The same month of 2008 = 100	The same period of 2008 = 100
Construction - total	111.8	89.3	78.1	86.2
Building construction	99.9	87.5	71.7	81.4
Civil engineering	139.2	92.5	91.5	97.2

The total production in construction in November 2009 was 10.7% below the level of the previous month. A decrease of 12.5% was registered in the production of building construction, as well in the civil engineering production - by 7.5%.

In the period January - November 2009, the total production in construction fell by 13.8% compared to the same period of 2008, the decline in the building construction was 18.6% and for civil - 2.8%.

Construction Production Indices (2005 = 100)



¹ Data for November 2009 is preliminary.

² Since January 2009 Construction Production Indices are calculated under the new classification NACE rev. 2. At the same time the base year was changed and indices were calculated on the base 2005. Data for the previous periods back to 2000, has been recalculated under NACE rev. 2.

The monthly indices show the short-term changes in the construction production between two comparable periods. This information can be used to analyze the current state of the construction activity in the country, as well as short-term forecast for its future development. The indices are calculated on the base of information on hours worked in the construction. The data is collected with monthly sample survey, which includes construction enterprises, which production exceeds 75% of the total production in construction.

Construction Production Indices - total and separately for building construction and civil engineering are calculated on the base (2005 = 100) for actual hours worked from all directly employed with the construction works.

According to the Classification of types of constructions (CC) the building construction includes construction of residential and no-residential buildings and civil engineering - infrastructure construction of roads, bridges, pipelines, power lines, telecommunication and other construction equipment.