



## Construction Production Indices in February 2010<sup>1,2</sup>

According to the preliminary data of the National Statistical Institute, the construction production in February 2010 decreased by 30.0% compared to the same month of the previous year. The significant influence on the total Construction Production Index had the production of the building construction, which dropped by 36.6%. A decline of 15.7% was registered in the civil engineering production.

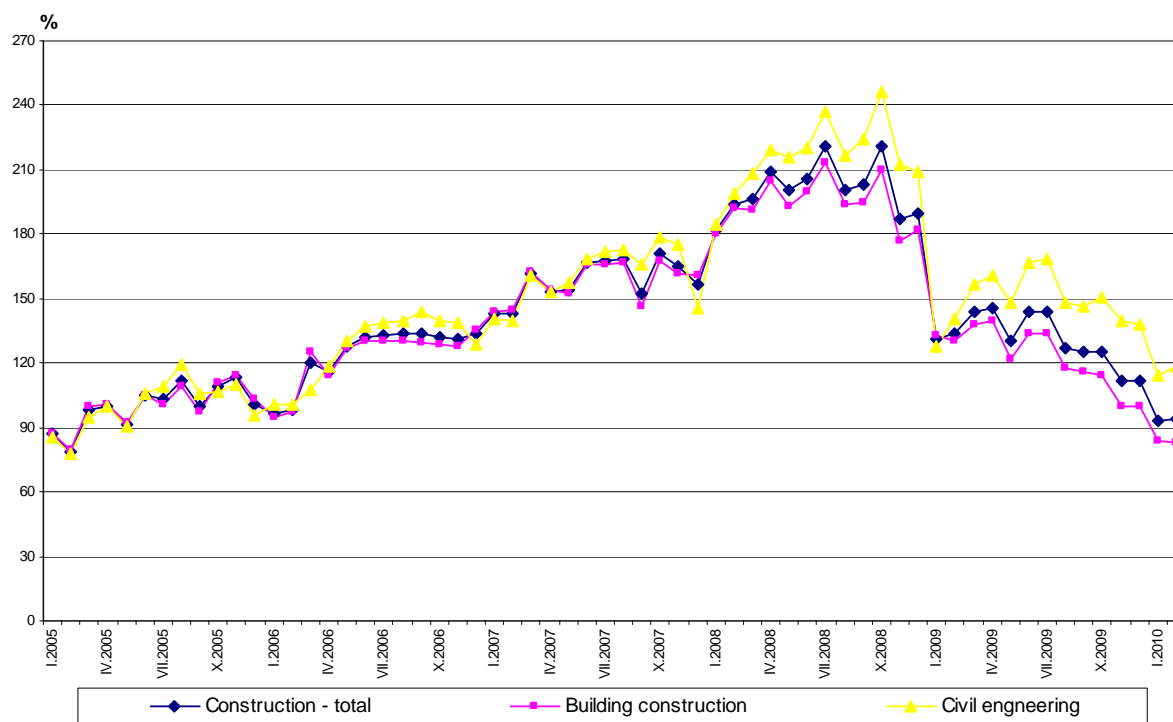
### Construction Production Indices in February 2010 (Preliminary data)

	February		January - February	
	2005 = 100	Previous month = 100	The same month of 2009 = 100	The same period of 2009 = 100
<b>Construction - total</b>	<b>93.7</b>	<b>100.8</b>	<b>70.0</b>	<b>70.4</b>
Building construction	82.9	99.1	63.4	63.2
Civil engineering	118.5	103.7	84.3	86.9

The total construction production in February 2010 was 0.8% above the level of the previous month. The production of building construction decreased by 0.9%, while an increase of 3.7% was registered in the civil engineering production.

In the period January - February 2010, the total production in construction fell by 29.6% compared to the same period of 2009. The overall decline was determined mainly by the negative rates in the building construction, which comprised 61.7% of the total construction production. The registered drop in the building construction was 36.8%, but in the civil engineering production it was 13.1%.

### Construction Production Indices (2005 = 100)



<sup>1</sup> Data for February 2010 is preliminary.

<sup>2</sup> Since January 2009 Construction Production Indices are calculated under the new classification NACE rev. 2. At the same time the base year was changed and indices were calculated on the base 2005. Data for the previous periods back to 2000, has been recalculated under NACE rev. 2.

The monthly indices show the short-term changes in the construction production between two comparable periods. This information can be used to analyze the current state of the construction activity in the country, as well as short-term forecast for its future development. The indices are calculated on the base of information on hours worked in the construction. The data is collected with monthly sample survey, which includes construction enterprises, which production exceeds 75% of the total production in construction.

Construction Production Indices - total and separately for building construction and civil engineering are calculated on the base (2005 = 100) for actual hours worked from all directly employed with the construction works.

According to the Classification of types of constructions (CC) the building construction includes construction of residential and no-residential buildings and civil engineering - infrastructure construction of roads, bridges, pipelines, power lines, telecommunication and other construction equipment.