



Construction Production Indices in January 2010^{1,2}

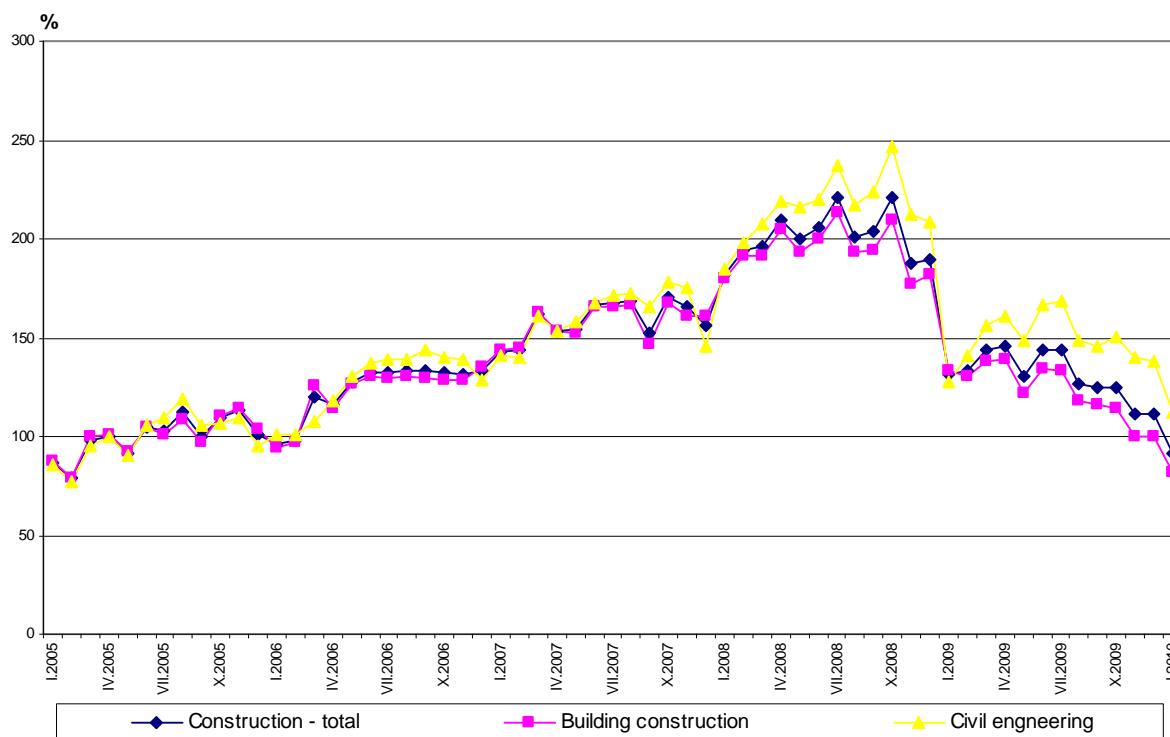
In January 2010, the total production in construction decreased by 30.7% compared to the same month of the previous year. A decline of 38.4% was registered in the production of the building construction, while in the civil engineering production it was 12.0% compared to January 2009. This fact indicated that the construction contractors guided their efforts to complete the construction equipment related to the infrastructure.

Construction Production Indices in January 2010 (Preliminary data)

	2005 = 100	Previous month = 100	The same month of 2009 = 100
Construction - total	91.0	81.5	69.3
Building construction	81.8	81.7	61.6
Civil engineering	112.2	81.1	88.0

According to the preliminary data of the National Statistical Institute, the construction production in January 2010 was 18.5% below the level of the previous month. A decrease of 18.3% was registered in the production of building construction but in the civil engineering production it was 18.9%. The relative share of the building construction in total construction production was 62.6%.

Construction Production Indices (2005 = 100)



¹ Data for January 2010 is preliminary.

² Since January 2009 Construction Production Indices are calculated under the new classification NACE rev. 2. At the same time the base year was changed and indices were calculated on the base 2005. Data for the previous periods back to 2000, has been recalculated under NACE rev. 2.

The monthly indices show the short-term changes in the construction production between two comparable periods. This information can be used to analyze the current state of the construction activity in the country, as well as short-term forecast for its future development. The indices are calculated on the base of information on hours worked in the construction. The data is collected with monthly sample survey, which includes construction enterprises, which production exceeds 75% of the total production in construction.

Construction Production Indices - total and separately for building construction and civil engineering are calculated on the base (2005 = 100) for actual hours worked from all directly employed with the construction works.

According to the Classification of types of constructions (CC) the building construction includes construction of residential and no-residential buildings and civil engineering - infrastructure construction of roads, bridges, pipelines, power lines, telecommunication and other construction equipment.