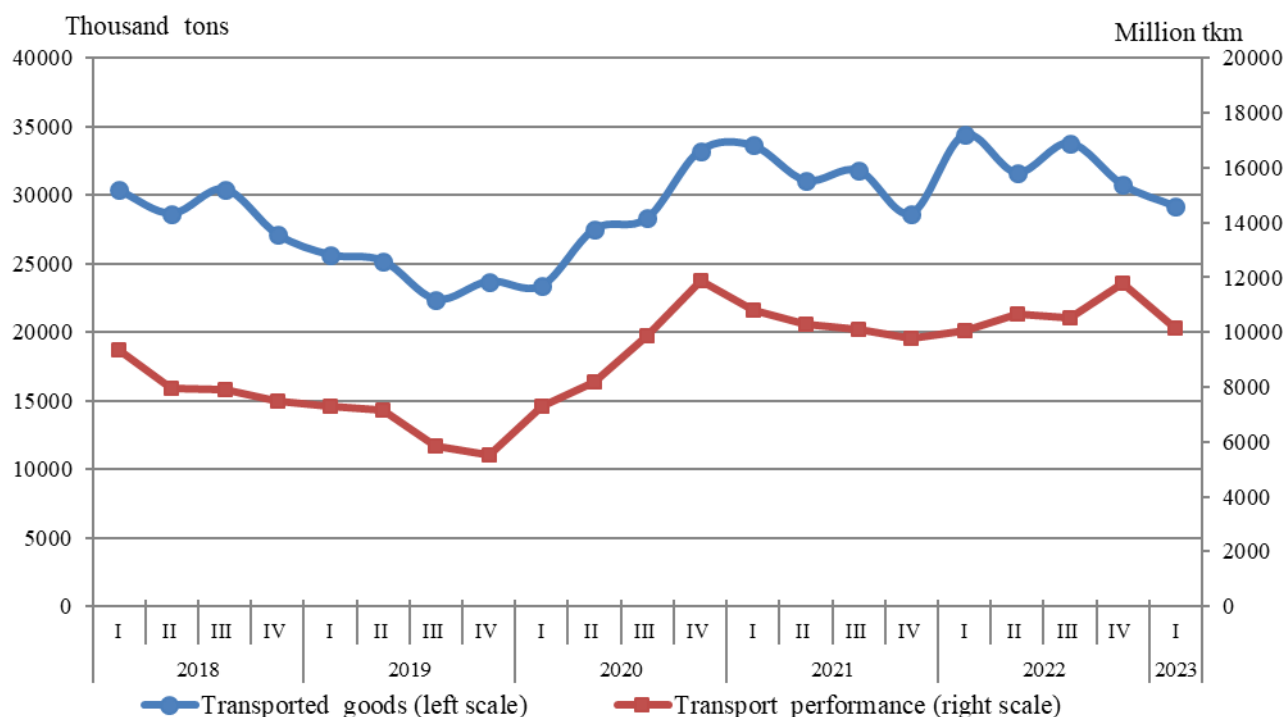


GOODS AND PASSENGERS CARRIED AND TRANSPORT PERFORMANCE BY MODE OF TRANSPORT IN THE FIRST QUARTER OF 2023 (PRELIMINARY DATA)

Quarterly changes

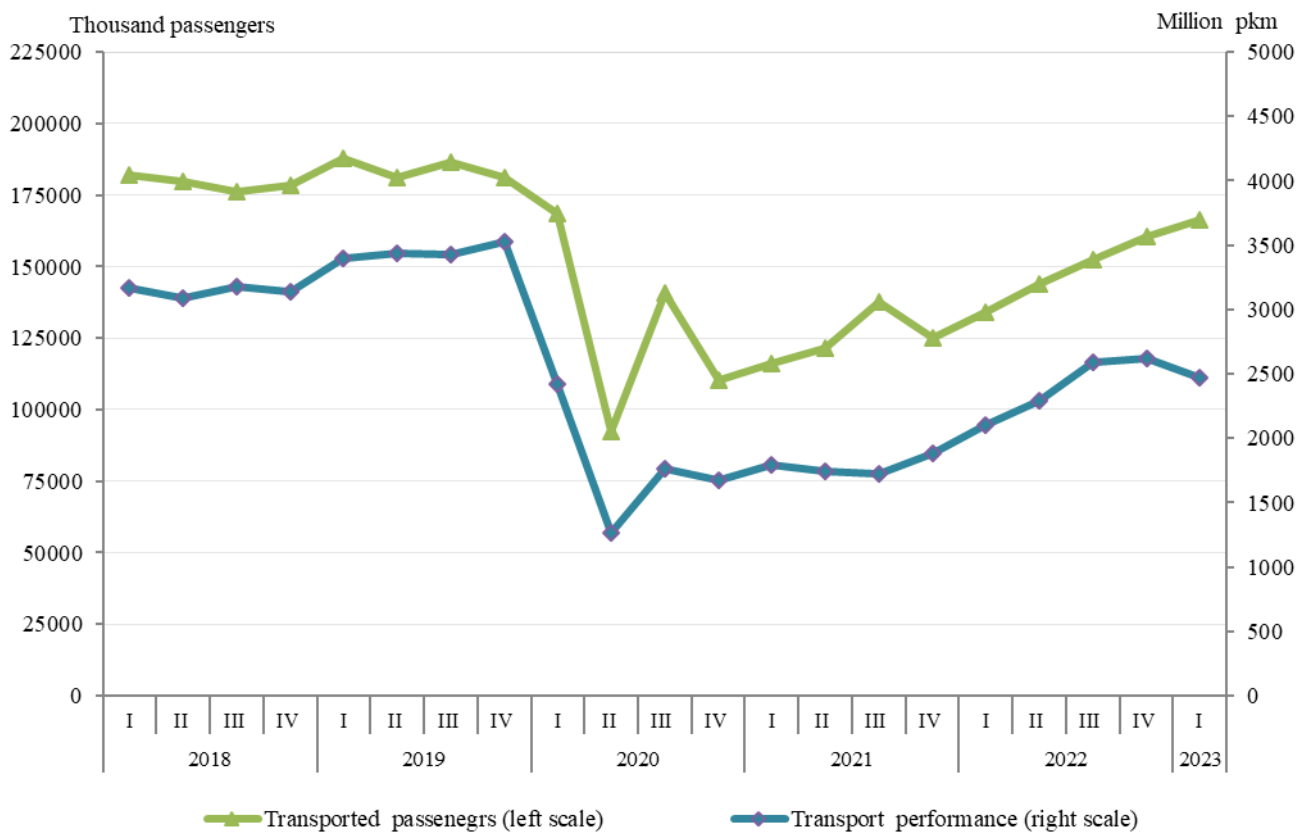
In the first quarter of 2023 there was a drop both in the transported goods by the **freight transport**, as well in the transport performance - by 5.1% and 13.8%, respectively (Figure 1). The data are preliminary and seasonally adjusted.

**Figure 1. Goods carried and transport performance by freight transport
(Seasonally adjusted data)**



The passengers carried from **passenger transport** (land, water and urban electrical transport) increased by 3.7% compared to the previous quarter. At the same time, the transport performance fell by 5.7% (Figure 2).

Figure 2. Transported passengers and transport performance by passenger transport (Seasonally adjusted data)



Annual changes

The goods carried decreased by 14.9%, while the transport performance from the freight land and water transport increased by 0.8% during the first quarter of 2023 in comparison with the same quarter of 2022. The data are preliminary.

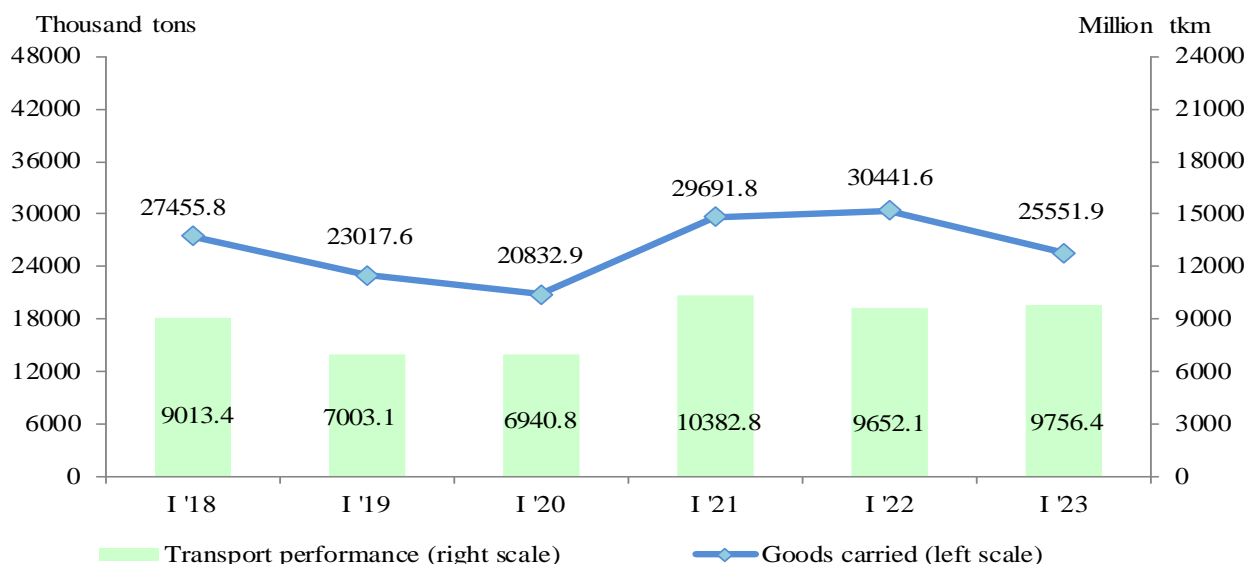
By 24.1% rose the number of transported passengers by the passenger transport (land, water and urban electrical transport) in the first quarter of 2023. The transport performance also increased by 19.6%.

Freight land transport

In the first quarter of 2023 the **transported goods** by the land transport were 25 551.9 thousand tons, or by 16.1% less than the same quarter of 2022 (Figure 3). The national carriages decreased by 1.1% and international carriages - by 5.4%.

The **transport performance** rose by 1.1% and reached 9 756.4 million tkm.

Figure 3. Transported goods and transport performance by land transport by quarters

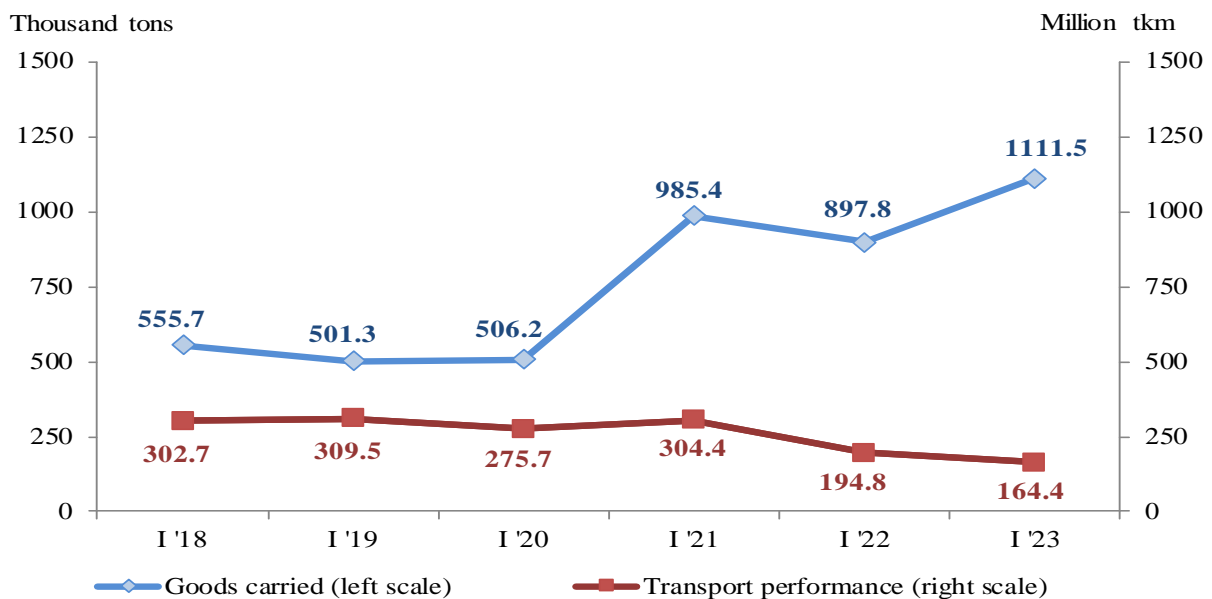


Freight water transport

The **transported goods** by the sea and inland waterway transport were by 23.8% more in comparison with the same quarter of 2022, due to the more transported goods by the inland waterway transport (Figure 4).

The **transport performance**, measured in tonne-kilometres, declined and reached 164.4 million tkm due to the less average distance travelled on which the goods by the maritime and inland waterway transport were transported.

Figure 4. Transported goods and transport performance by water transport by quarters

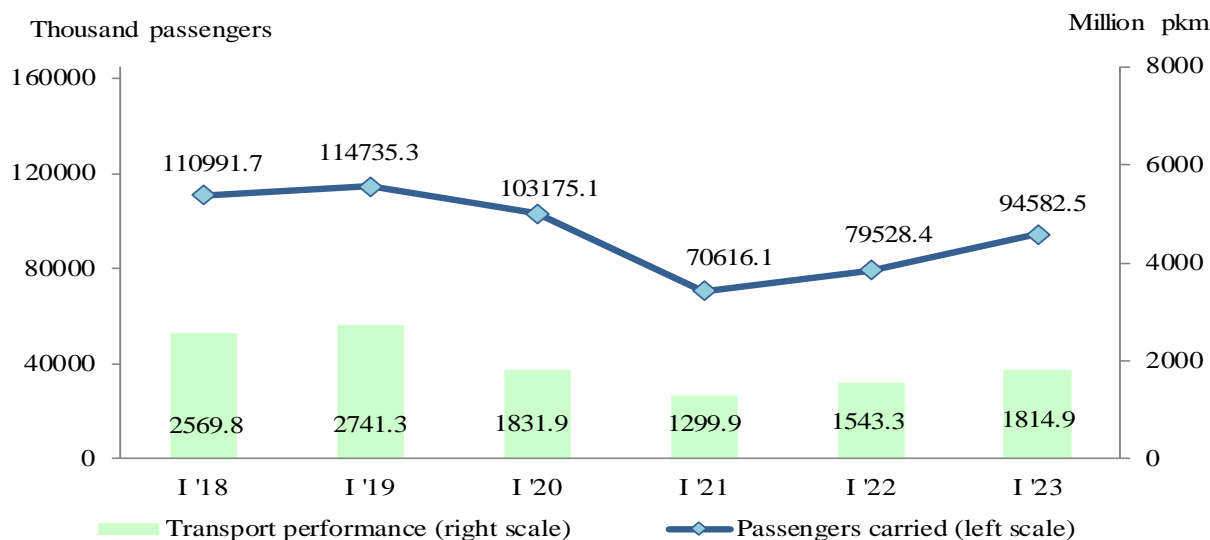


Passengers land transport

The number of the **transported passengers** by the land transport in the first quarter of 2023 was 94 582.5 thousand, or by 18.9% more than the corresponding period of the previous year (Figure 5). The increase by the railway transport was 21.8% and by the bus transport - 18.8%.

The **transport performance** was 1 814.9 million passenger-kilometres, which represented a growth by 17.6% compared to the first quarter of 2022.

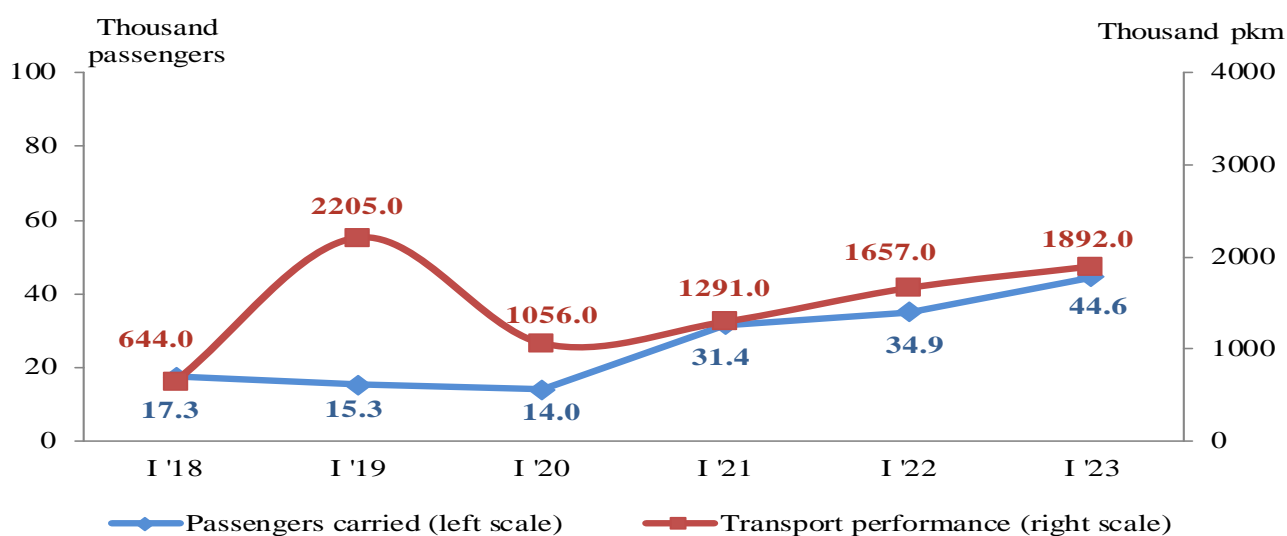
Figure 5. Transported passengers and transport performance by land transport by quarters



Passengers water transport

In the first quarter of 2023, there was an increase of the **transported passengers** by water transport (by 9.7 thousand passengers) as well in the **transport performance** by 235.2 thousand pkm (Figure 6).

Figure 6. Transported passengers and transport performance by water transport by quarters

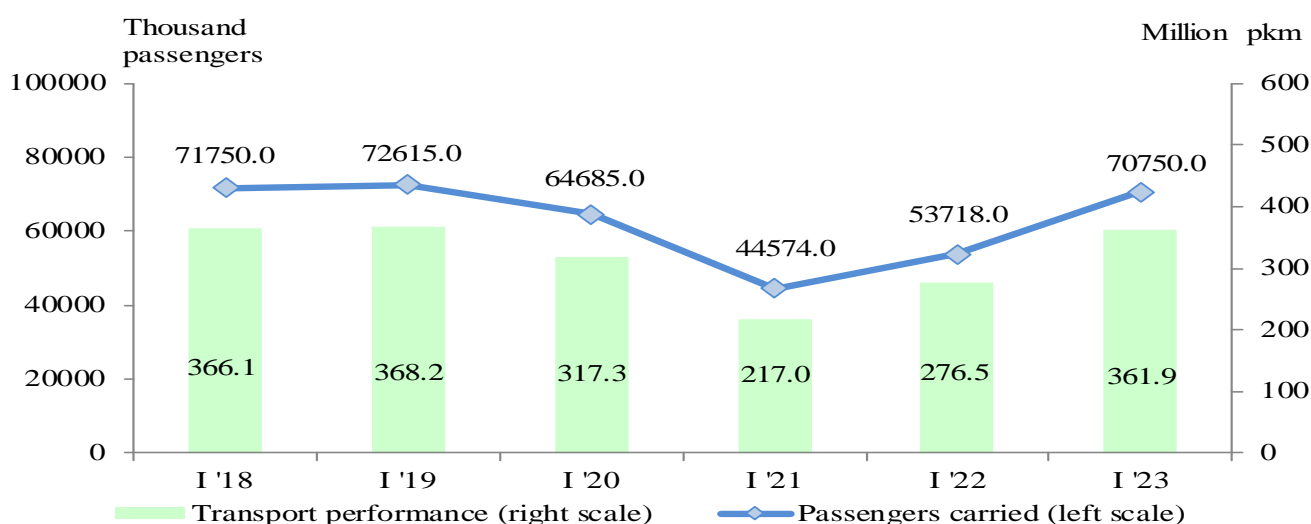


Urban electrical transport

During the period January - March of 2023 the enterprises performing urban electrical transport transported **70 750.0 thousand passengers**, or by 31.7% more than the same period of 2022 (Figure 7). By all the types of urban transport was observed an increase, where the electric bus transport registered the biggest rose by 81.4%.

The **transport performance** measured in passenger-kilometres also increased by 30.9% and reached 361.9 million pkm.

Figure 7. Transported passengers and transport performance by urban electrical transport by quarters





Methodological notes

Land freight transport covers the freight carriages by road and rail transport from vehicles with Bulgarian registration as well as transmission of goods by pipelines.

Land passenger transport covers the passengers' carriages by road and rail transport from vehicles with Bulgarian registration.

Water transport covers the passengers' and freight carriages and transport performance by maritime and IWW vessels with Bulgarian registration.

Urban electrical transport includes passengers carried and transport performance of trolleybus and electric bus transport in the country, tramway transport and metro in Sofia.

Goods carried (tons) - measures the total volume of goods carried **for hire or reward** between two places (place of loading and place of unloading).

Transport performance of freight transport (tonne-kilometres) - corresponds to the transportation of one ton over one kilometre.

Passengers carried (in numbers) - measures the total number of passengers **with paid fares** carried by the corresponding type of transport between two places (place of embarkation and place of disembarkation).

Transport performance of passenger transport (passenger-kilometres) - corresponds to the transportation of one passenger over one kilometre.

Annex

Table 1

Main indicators of the freight transport activity,
first quarter of 2022 and 2023

Freight transport	I-st quarter 2022	I-st quarter 2023	Index of change compared to the first quarter of 2022
Land transport - transported goods			
Total - thousand tons	30441.6	25551.9	83.9
National	20425.2	16076.5	78.7
International	10016.4	9475.4	94.6
Land transport - transport performance			
Total - million tkm	9652.1	9756.4	101.1
National	2304.1	2471.8	107.3
International	7348.0	7284.6	99.1
Water transport - transported goods			
Total - thousand tons	897.8	1111.5	123.8
National	-	-	-
International	897.8	1111.5	123.8
Water transport - transport performance			
Total - million tkm	194.8	164.4	84.4
National	-	-	-
International	194.8	164.4	84.4

‘-’ - no case registered.

Table 2

**Main indicators of the passenger transport activity,
first quarter of 2022 and 2023**

Passenger transport	I-st quarter 2022	I-st quarter 2023	Index of change compared to the first quarter of 2022
Land transport - transported passengers			
Total - thousands	79528.4	94582.5	118.9
National	79225.8	93946.1	118.6
International	302.6	636.4	210.3
Land transport - transport performance			
Total - million pkm	1543.3	1814.9	117.6
National	1355.5	1586.5	117.0
International	187.8	228.4	121.6
Water transport - transported passengers			
Total - thousands	34.9	44.6	127.8
National	-	-	-
International	34.9	44.6	127.8
Water transport - transport performance			
Total - million pkm	1.7	1.9	114.2
National	-	-	-
International	1.7	1.9	114.2
Urban electrical transport - transported passengers			
Total - thousands	53718.0	70750.0	131.7
Urban electrical transport - transport performance			
Total - million pkm	276.5	361.9	130.9

'-' - no case registered.