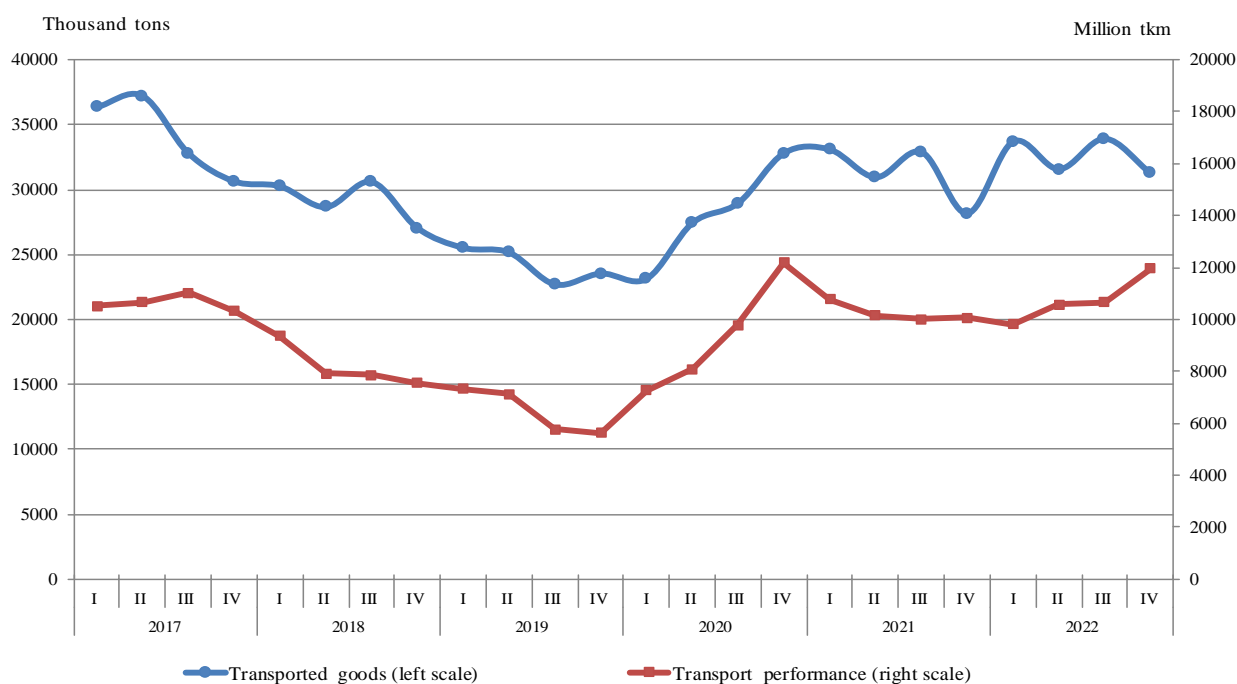


## GOODS AND PASSENGERS CARRIED AND TRANSPORT PERFORMANCE BY MODE OF TRANSPORT IN THE FOURTH QUARTER OF 2022 (PRELIMINARY DATA)

### Quarterly changes

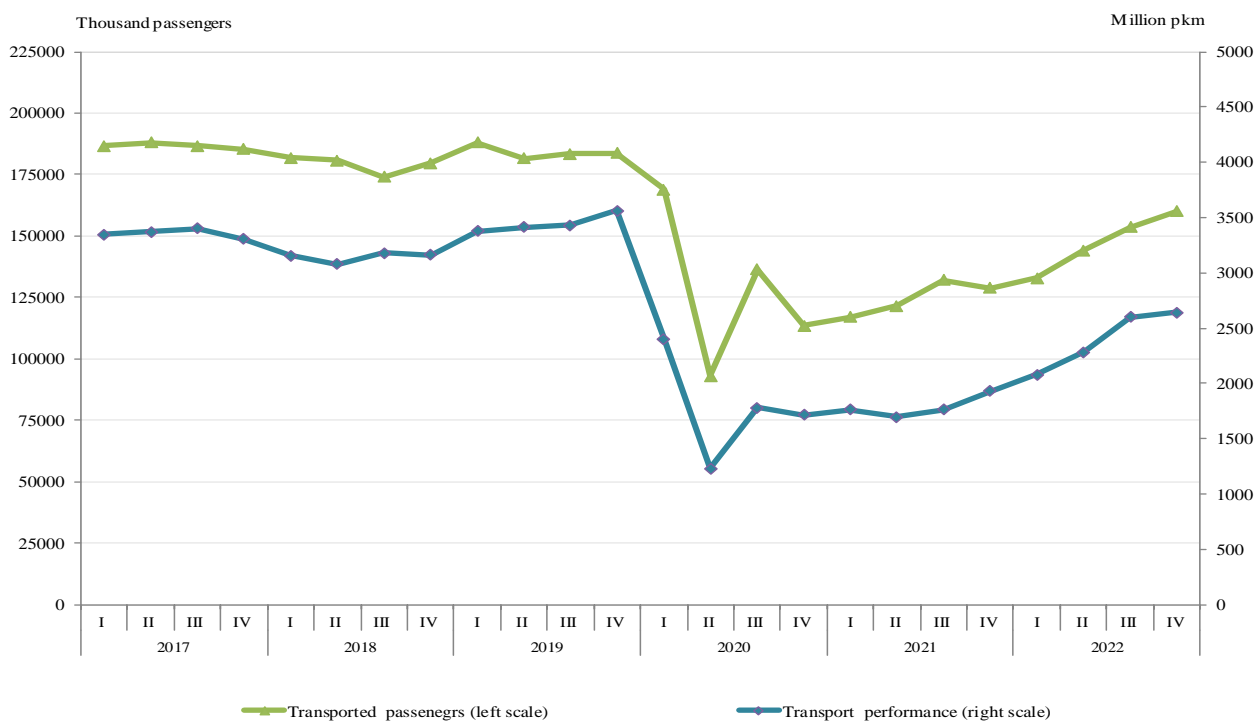
In the fourth quarter of 2022 the transported goods by the **freight transport** fell by 7.9%, while the transport performance rose by 12.2% compared to the previous quarter (Figure 1). The data are preliminary and seasonally adjusted.

**Figure 1. Goods carried and transport performance by freight transport  
(Seasonally adjusted data)**



Both the passengers carried and the transport performance from the **passenger transport** (land, water and urban electrical transport) increased compared to the third quarter of 2022 - by 4.3% and 1.6%, respectively (Figure 2).

**Figure 2. Transported passengers and transport performance by passenger transport (Seasonally adjusted data)**



### Annual changes

The goods carried and the transport performance by the freight land and water transport increased by 6.7% and 21.1% during the fourth quarter of 2022 in comparison with the same quarter of 2021. The data are preliminary.

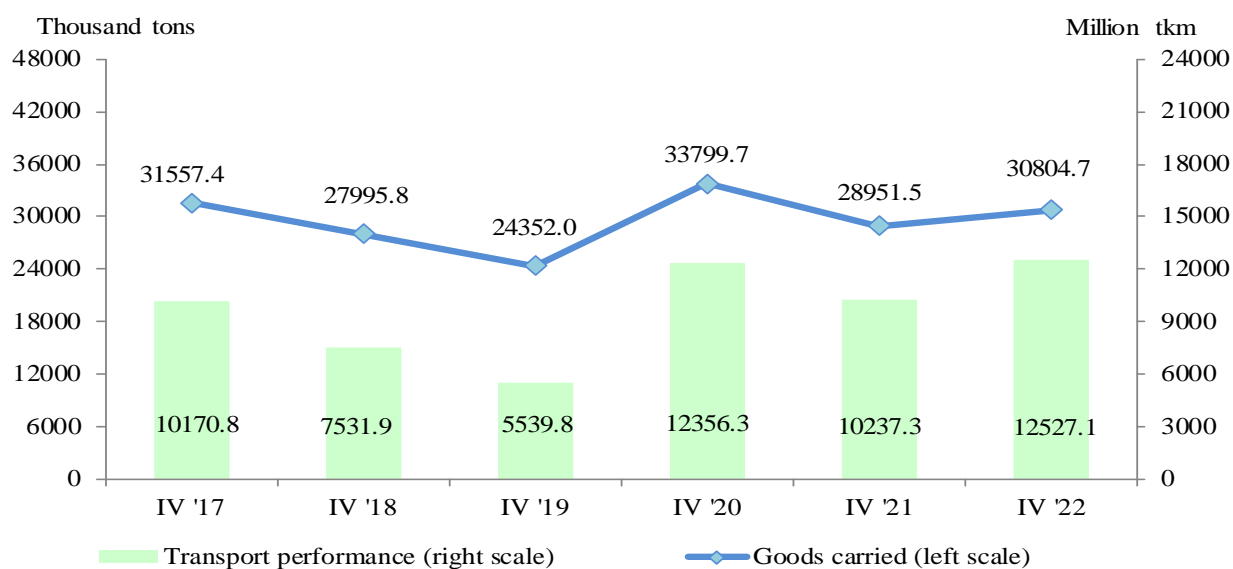
By 27.0% rose the number of transported passengers from the passenger transport (land, water and urban electrical transport) in the fourth quarter of 2022. The transport performance also increased by 40.2%.

### Freight land transport

In the fourth quarter of 2022 the **transported goods** by the land transport were 30 804.7 thousand tons, or by 6.4% more than the same quarter of 2021 (Figure 3), mainly due to the increase by 20.2% of the international carriages.

The **transport performance** also rose (by 22.4%) and reached 12 527.1 million tkm.

**Figure 3. Transported goods and transport performance by land transport by quarters**

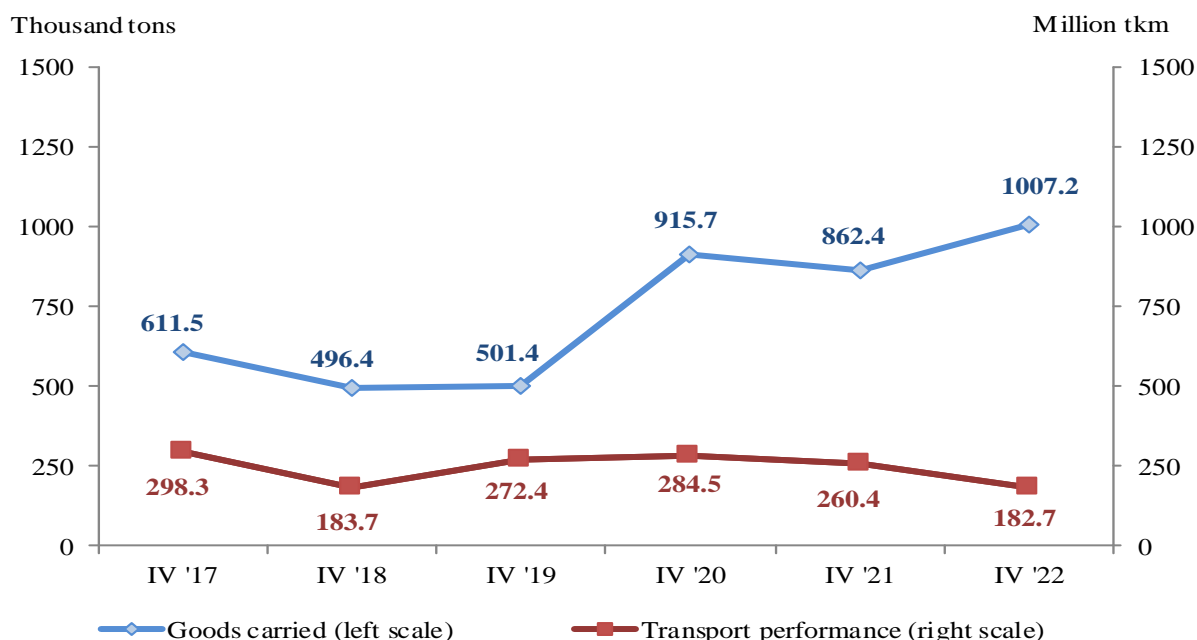


### Freight water transport

The **transported goods** by the sea and inland waterway transport were by 16.8% more in comparison with the same quarter of 2021, due to the more transported goods by the inland waterway transport (Figure 4).

The **transport performance**, measured in tonne-kilometres, declined and reached 182.7 million tkm, mainly due to the international carriages of the inland waterway transport that fell by 41.8%.

**Figure 4. Transported goods and transport performance by water transport by quarters**

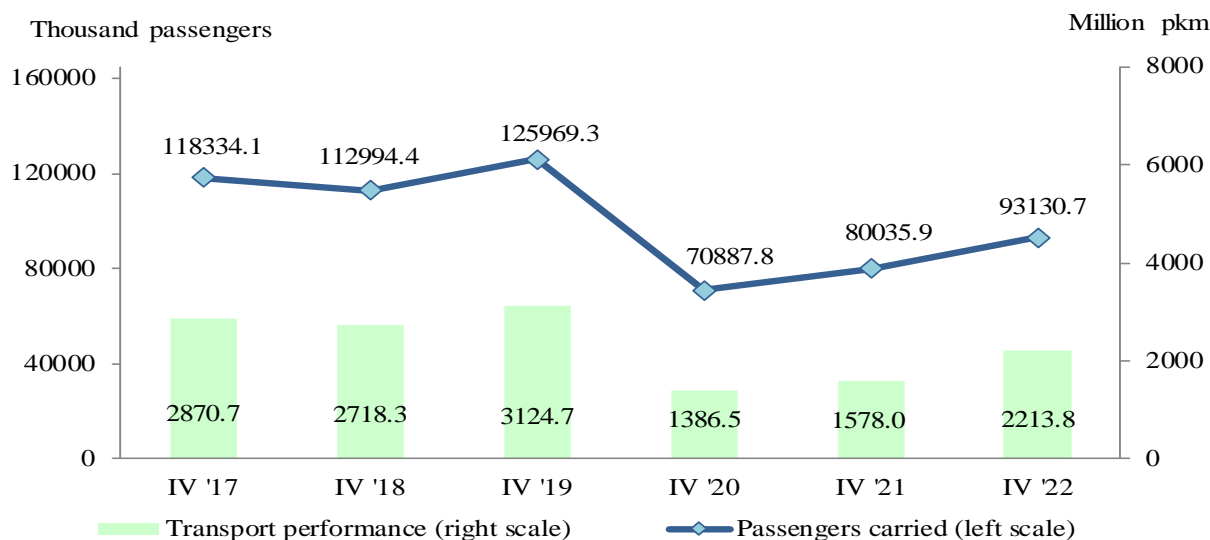


### Passengers land transport

The number of the **transported passengers** by the land transport in the fourth quarter of 2022 was 93 130.7 thousand, or by 16.4% more than the corresponding period of the previous year (Figure 5). The increase by the bus transport was 14.8% and by the railway transport - 44.0%.

The **transport performance** was 2 213.8 million passenger-kilometres, which represented a growth by 40.3% compared to the fourth quarter of 2021.

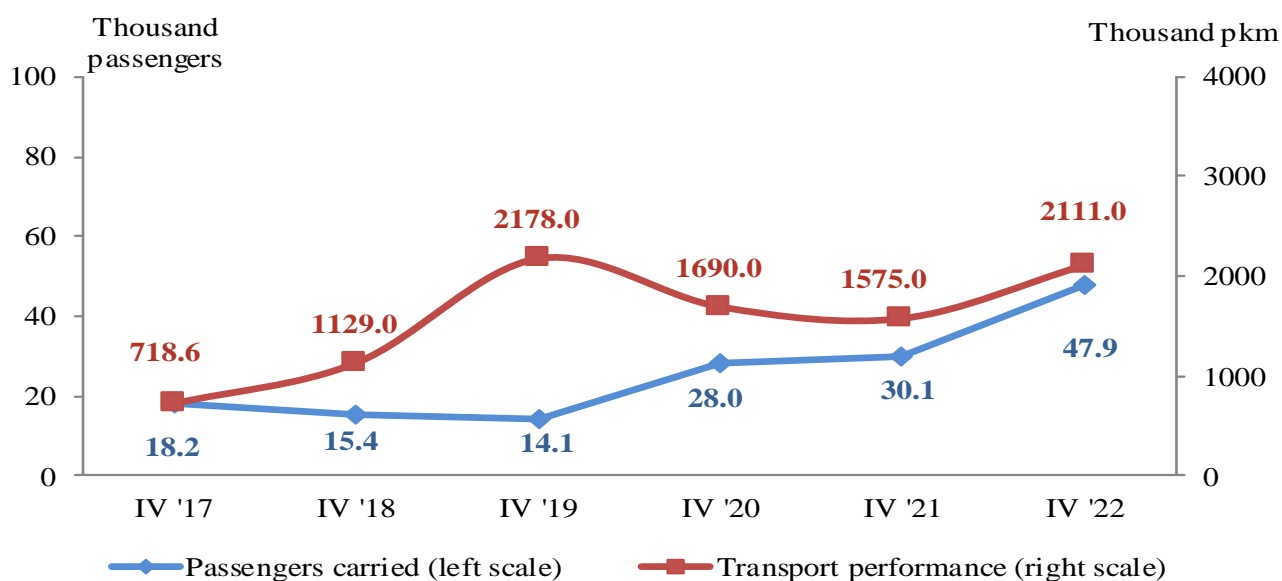
**Figure 5. Transported passengers and transport performance by land transport by quarters**



### Passengers water transport

In the fourth quarter of 2022, there was an increase of the **transported passengers** by water transport (by 17.8 thousand passengers) as well in the **transport performance** by 535.5 thousand pkm (Figure 6).

**Figure 6. Transported passengers and transport performance by water transport by quarters**

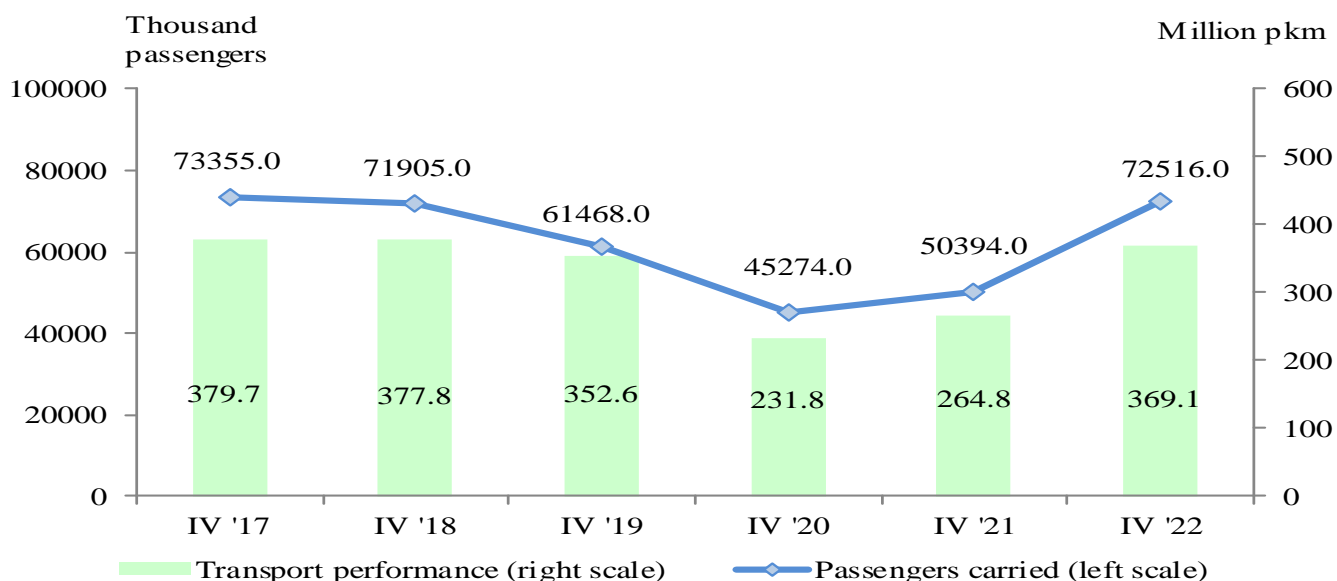


### Urban electrical transport

During the period October – December of 2022 the enterprises performing urban electrical transport transported **72 516.0 thousand passengers**, or by 43.9% more than the same period of 2021 (Figure 7). By all the types of urban transport was observed an increase, where the trolleybus transport registered the biggest rise by 52.2%.

The **transport performance** measured in passenger-kilometres also increased by 39.4% and reached 369.1 million pkm.

**Figure 7. Transported passengers and transport performance by urban electrical transport by quarters**





## Methodological notes

**Land freight transport** covers the freight carriages by road and rail transport from vehicles with Bulgarian registration as well as transmission of goods by pipelines.

**Land passenger transport** covers the passengers' carriages by road and rail transport from vehicles with Bulgarian registration.

**Water transport** covers the passengers' and freight carriages and transport performance by maritime and IWW vessels with Bulgarian registration.

**Urban electrical transport** includes passengers carried and transport performance of trolleybus and electric bus transport in the country, tramway transport and metro in Sofia.

**Goods carried** (tons) - measures the total volume of goods carried **for hire or reward** between two places (place of loading and place of unloading).

**Transport performance of freight transport** (tonne-kilometres) - corresponds to the transportation of one ton over one kilometre.

**Passengers carried** (in numbers) - measures the total number of passengers **with paid fares** carried by the corresponding type of transport between two places (place of embarkation and place of disembarkation).

**Transport performance of passenger transport** (passenger-kilometres) - corresponds to the transportation of one passenger over one kilometre.

Annex

Table 1

Main indicators of the freight transport activity,  
fourth quarter of 2021 and 2022

Freight transport	IV-th quarter 2021	IV-th quarter 2022	Index of change compared to the fourth quarter of 2021
Land transport - transported goods			
<b>Total - thousand tons</b>	<b>28951.5</b>	<b>30804.7</b>	<b>106.4</b>
National	18472.5	18203.8	98.5
International	10479.0	12600.9	120.2
Land transport - transport performance			
<b>Total - million tkm</b>	<b>10237.3</b>	<b>12527.1</b>	<b>122.4</b>
National	2236.6	2205.5	98.6
International	8000.7	10321.6	129.0
Water transport - transported goods			
<b>Total - thousand tons</b>	<b>862.4</b>	<b>1007.2</b>	<b>116.8</b>
National	-	-	-
International	862.4	1007.2	116.8
Water transport - transport performance			
<b>Total - million tkm</b>	<b>260.4</b>	<b>182.7</b>	<b>70.2</b>
National	-	-	-
International	260.4	182.7	70.2

‘-’ - no case registered.



Table 2

**Main indicators of the passenger transport activity,  
fourth quarter of 2021 and 2022**

<b>Passenger transport</b>	<b>IV-th quarter 2021</b>	<b>IV-th quarter 2022</b>	<b>Index of change compared to the fourth quarter of 2021</b>
Land transport - transported passengers			
<b>Total - thousands</b>	<b>80035.9</b>	<b>93130.7</b>	<b>116.4</b>
National	79789.4	92197.7	115.6
International	246.5	933.0	378.5
Land transport - transport performance			
<b>Total - million pkm</b>	<b>1578.0</b>	<b>2213.8</b>	<b>140.3</b>
National	1415.9	1697.0	119.9
International	162.1	516.8	318.8
Water transport - transported passengers			
<b>Total - thousands</b>	<b>30.1</b>	<b>47.9</b>	<b>159.1</b>
National	-	-	-
International	30.1	47.9	159.1
Water transport - transport performance			
<b>Total - million pkm</b>	<b>1.6</b>	<b>2.1</b>	<b>134.0</b>
National	-	-	-
International	1.6	2.1	134.0
Urban electrical transport - transported passengers			
<b>Total - thousands</b>	<b>50394.0</b>	<b>72516.0</b>	<b>143.9</b>
Urban electrical transport - transport performance			
<b>Total - million pkm</b>	<b>264.8</b>	<b>369.1</b>	<b>139.4</b>