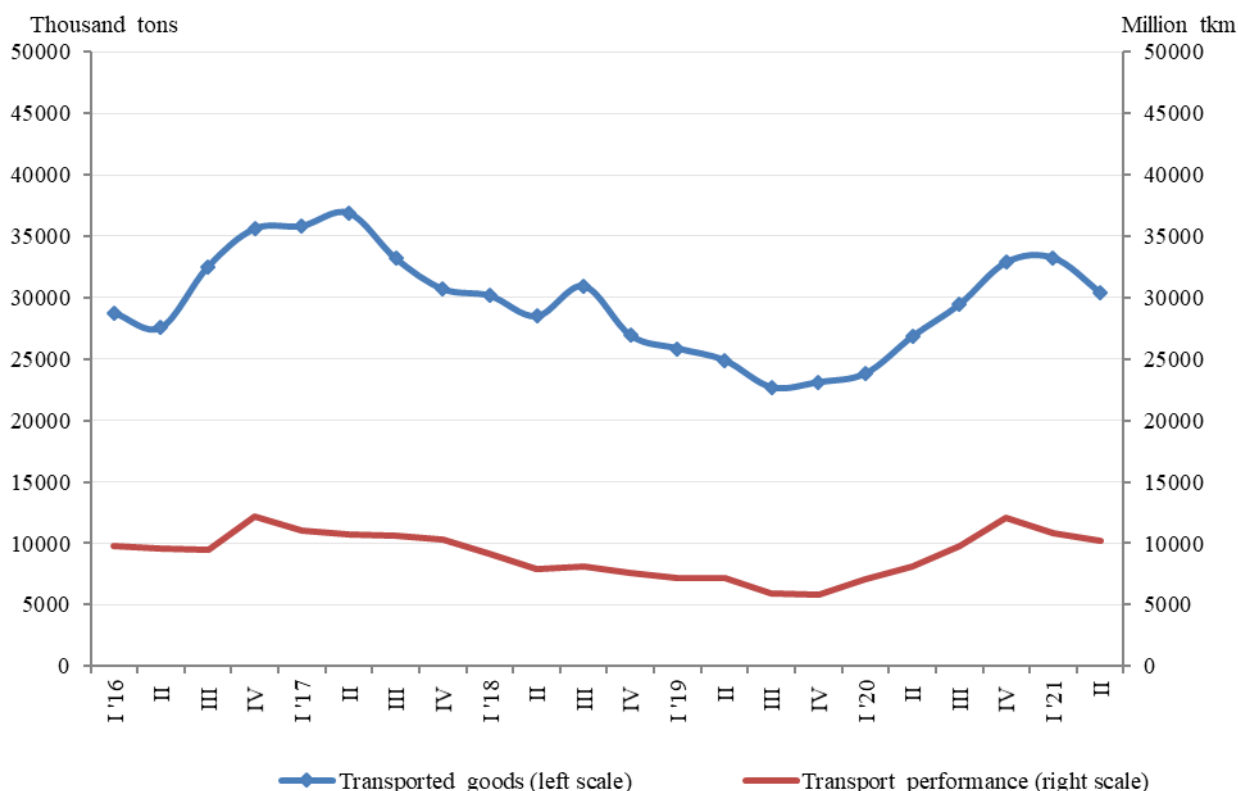


**GOODS AND PASSENGERS CARRIED AND TRANSPORT PERFORMANCE BY
 MODE OF TRANSPORT IN THE SECOND QUARTER OF 2021
 (PRELIMINARY DATA)**

Quarterly changes

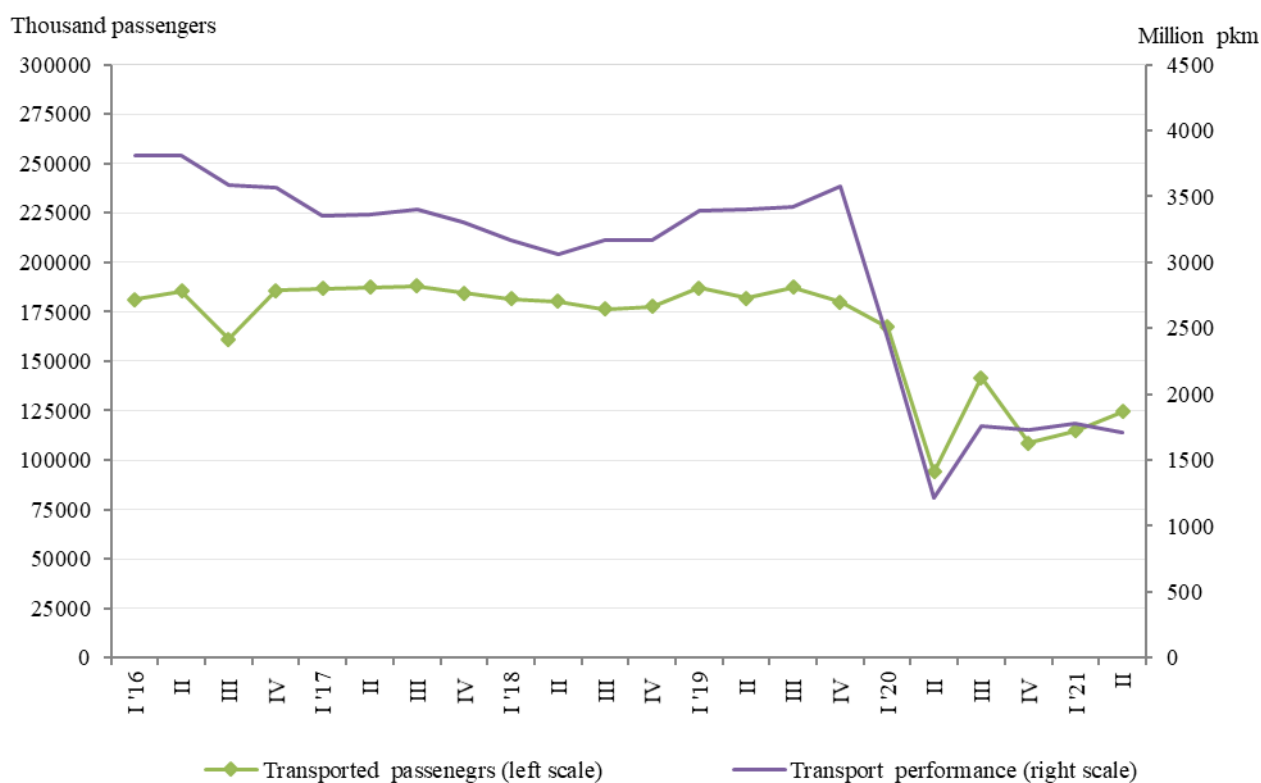
According to preliminary seasonally adjusted data in the second quarter of 2021 compared to the previous quarter, both the transported goods and the transport performance by the **freight transport** decreased respectively by 8.6% and by 5.9% (Figure 1).

**Figure 1. Goods carried and transport performance by freight transport
 (Seasonally adjusted data)**



The passengers carried from **passenger transport** (land, water and urban electrical transport) increased by 8.4% compared to the first quarter of 2021, while the transport performance decreased by 3.8% (Figure 2).

Figure 2. Transported passengers and transport performance by passenger transport (Seasonally adjusted data)



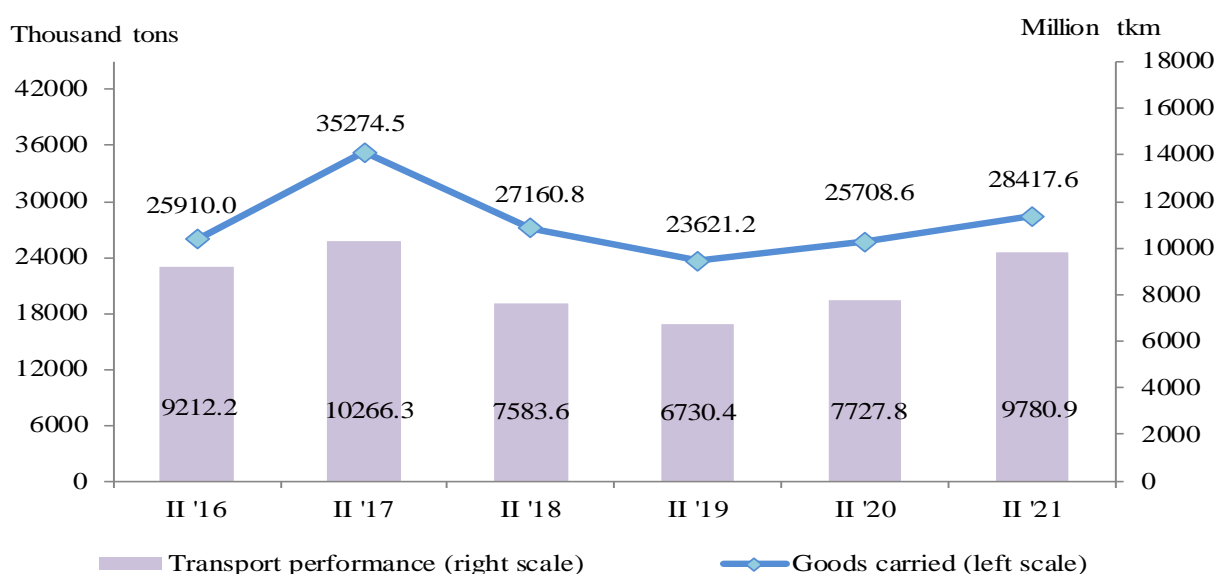
Annual changes

According to preliminary data during the second quarter of 2021 there was an increase, both the goods carried (by 12.1%) and the transport performance (by 25.6%) by the freight land and water transport in comparison with the same period of 2020. The transported passengers and the transport performance of the passenger transport grew by 30.1% and 36.0% compared to the same quarter of the previous year.

Freight land transport

In the second quarter of 2021 the **transported goods** by the land transport were 28 417.6 thousand tons, or by 2 709.0 thousand tons more than the same quarter of 2020 (Figure 3). An increase was observed in all types of transport. The **transport performance** also increased and reached 9 780.9 million tkm.

Figure 3. Transported goods and transport performance by land transport by quarters

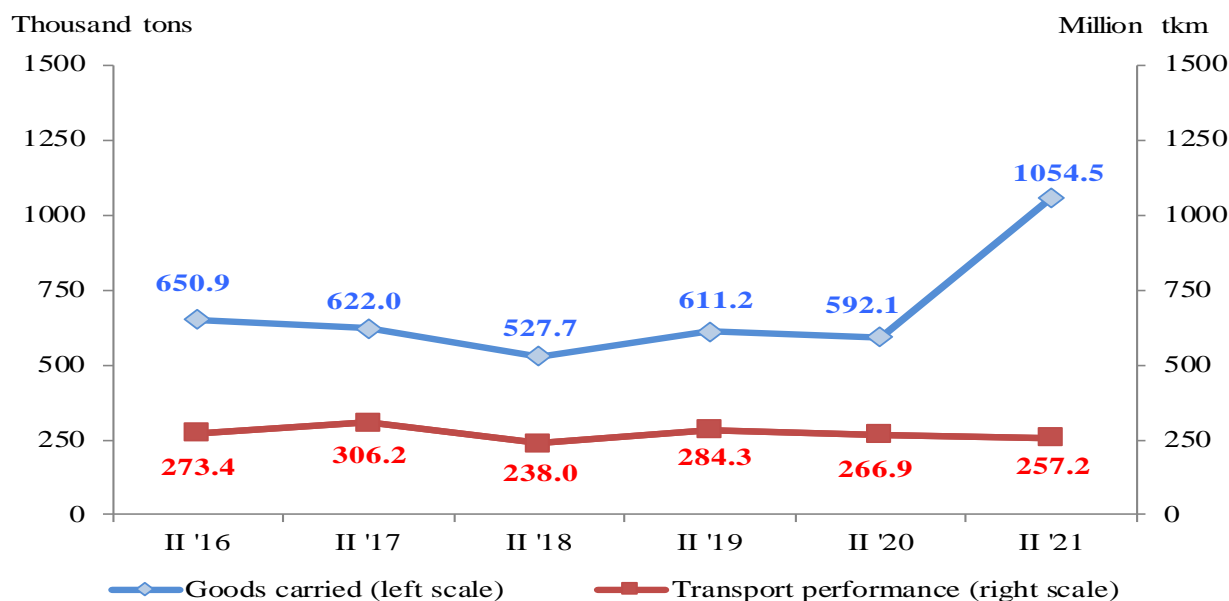


Freight water transport

The **transported goods** by sea and inland waterway transport, which in the second quarter of 2021 have performed only international carriages, increased by 462.4 thousand tons in comparison with the same quarter of 2020, due to the more transported goods by the inland waterway and maritime transport (Figure 4).

At the same time the **transport performance**, measured in tonne-kilometres, decreased and reached 257.2 million tkm due to the smaller distance on which the goods by the inland waterway transport were transported.

Figure 4. Transported goods and transport performance by water transport by quarters

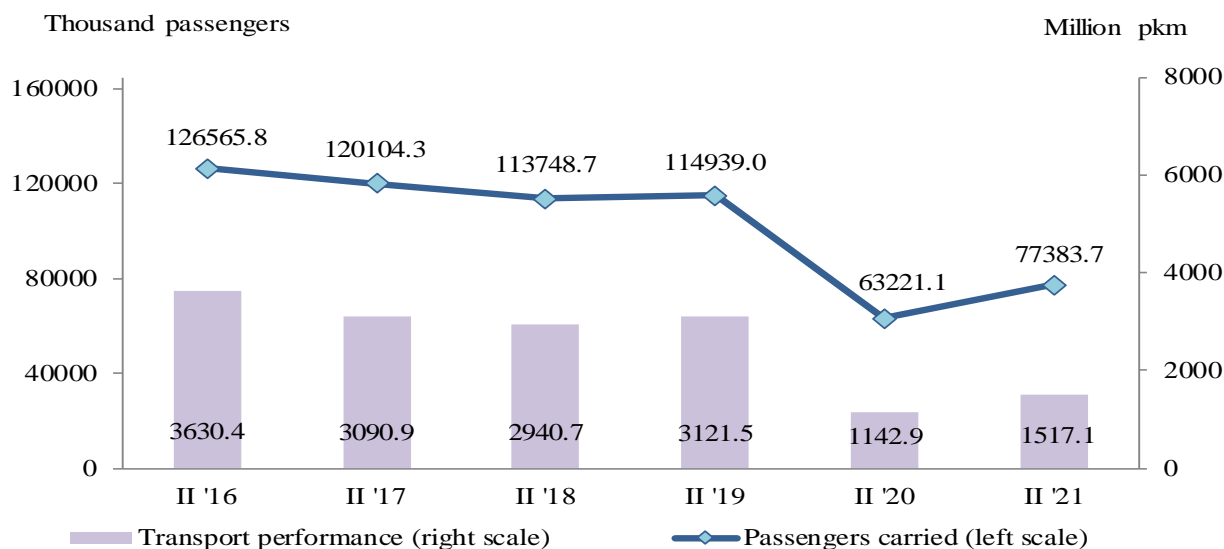


Passengers land transport

The number of the **transported passengers** by land transport in the second quarter of 2021 was 77 383.7 thousand, or by 22.4% more than the same period of the previous year (Figure 5), which was due to the increased number of transported passengers by bus and railway transport.

The **transport performance** also grew by 32.7% and reached 1 517.1 million passenger-kilometres (Figure 5).

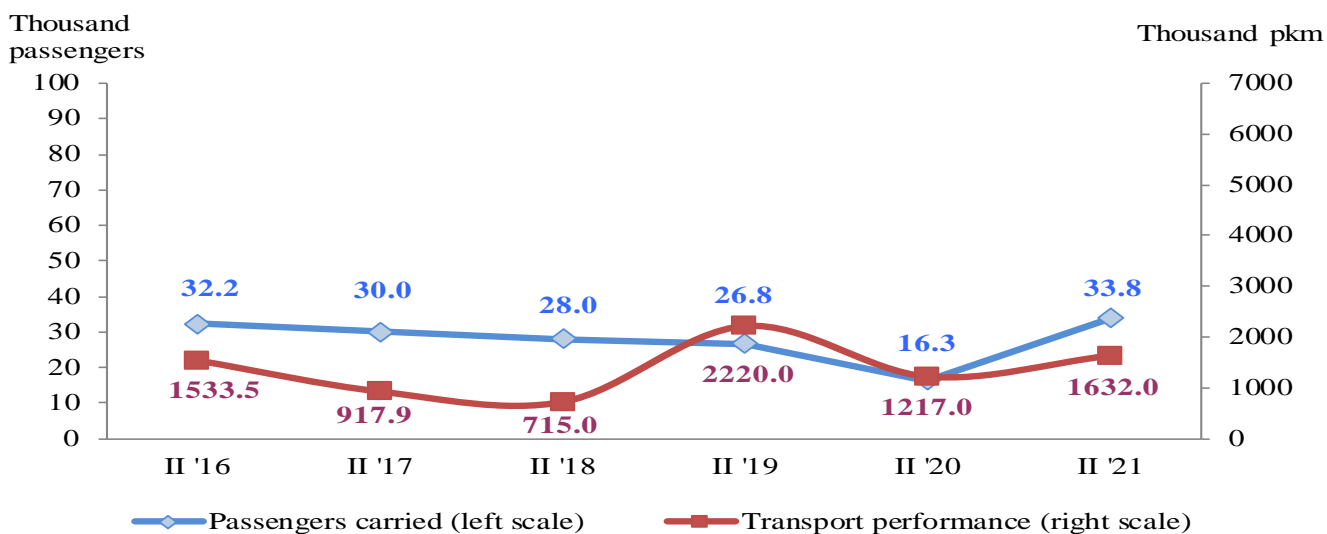
Figure 5. Transported passengers and transport performance by land transport by quarters



Passengers water transport

In the second quarter of 2021 there was an increase in the **transported passengers** and in the **transport performance** by water transport, by 17.5 thousand passengers and 429.4 thousand pkm, respectively. The rise was due to the more transported passengers by the inland waterway transport (Figure 6).

Figure 6. Transported passengers and transport performance by water transport by quarters

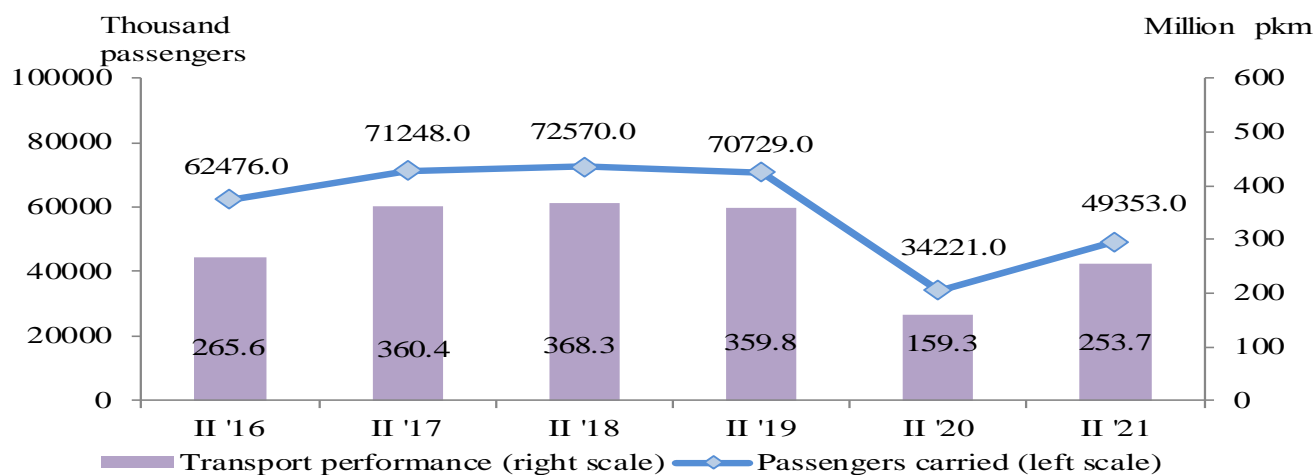


Urban electrical transport

During the period April - June of 2021 the enterprises performing urban electrical transport (tram, trolleybus and metro) transported **49 353.0 thousand passengers**, or by 44.2% more than the same period of 2020 (Figure 7). The rise was observed in all types of public transport.

The **transport performance** measured in passenger-kilometres also increased and reached 253.7 thousand pkm.

Figure 7. Transported passengers and transport performance by urban electrical transport by quarters



Methodological notes

Land freight transport covers the freight carriages by road and rail transport from vehicles with Bulgarian registration as well as transmission of goods by pipelines.

Land passenger transport covers the passengers' carriages by road and rail transport from vehicles with Bulgarian registration.

Water transport covers the passengers' and freight carriages and transport performance by maritime and IWW vessels with Bulgarian registration.

Urban electrical transport includes passengers carried and transport performance of trolleybus transport in the country, tramway transport and metro in Sofia.

Goods carried (tons) - measures the total volume of goods carried **for hire or reward** between two places (place of loading and place of unloading).

Transport performance of freight transport (tonne-kilometres) - corresponds to the transportation of one ton over one kilometre.

Passengers carried (in numbers) - measures the total number of passengers **with paid fares** carried by the corresponding type of transport between two places (place of embarkation and place of disembarkation).

Transport performance of passenger transport (passenger-kilometres) - corresponds to the transportation of one passenger over one kilometre.

Annex

Table 1

Main indicators of the freight transport activity,
second quarter of 2020 and 2021

Freight transport	II quarter 2020	II quarter 2021	Index of change compared to the second quarter of 2020
Land transport - transported goods			
Total - thousand tons	25708.6	28417.6	110.5
National	17133.2	17891.7	104.4
International	8575.4	10525.9	122.7
Land transport - transport performance			
Total - million tkm	7727.8	9780.9	126.6
National	1794.4	2128.7	118.6
International	5933.4	7652.2	129.0
Water transport - transported goods			
Total - thousand tons	592.1	1054.5	178.1
National	-	-	-
International	592.1	1054.5	178.1
Water transport - transport performance			
Total - million tkm	266.9	257.2	96.4
National	-	-	-
International	266.9	257.2	96.4

‘-’ - no case registered.

Table 2

**Main indicators of the passenger transport activity,
second quarter of 2020 and 2021**

Passenger transport	II quarter 2020	II quarter 2021	Index of change compared to the second quarter of 2020
Land transport - transported passengers			
Total - thousands	63221.1	77383.7	122.4
National	63083.0	77251.4	122.5
International	138.1	132.3	95.8
Land transport - transport performance			
Total - million pkm	1142.9	1517.1	132.7
National	1112.8	1387.4	124.7
International	30.1	129.7	430.9
Water transport - transported passengers			
Total - thousands	16.3	33.8	207.4
National	-	-	-
International	16.3	33.8	207.4
Water transport - transport performance			
Total - million pkm	1.2	1.6	134.1
National	-	-	-
International	1.2	1.6	134.1
Urban electrical transport - transported passengers			
Total - thousands	34221.0	49353.0	144.2
Urban electrical transport - transport performance			
Total - million pkm	159.3	253.7	159.3

- - no case registered.