



GOODS AND PASSENGERS CARRIED AND TRANSPORT PERFORMANCE BY MODE OF TRANSPORT IN THE SECOND QUARTER OF 2014 (PRELIMINARY DATA)

According to preliminary seasonally adjusted data in the second quarter of 2014 compared to the previous quarter the goods carried by the freight transport fell by 0.8% while the transport performance rose by 0.2% (Figure 1).

In comparison with the first quarter of 2014 an increased of the transported passengers (by 2.2%) as well of the transport performance (by 3.0%) from the passenger land, water and urban electrical transport was observed (Figure 2).

Figure 1. Goods carried and transport performance by the freight transport (Seasonally adjusted data)

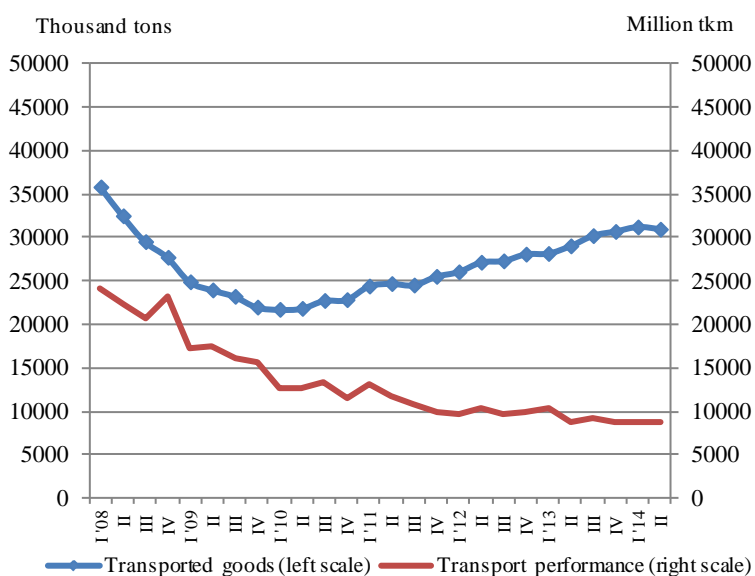
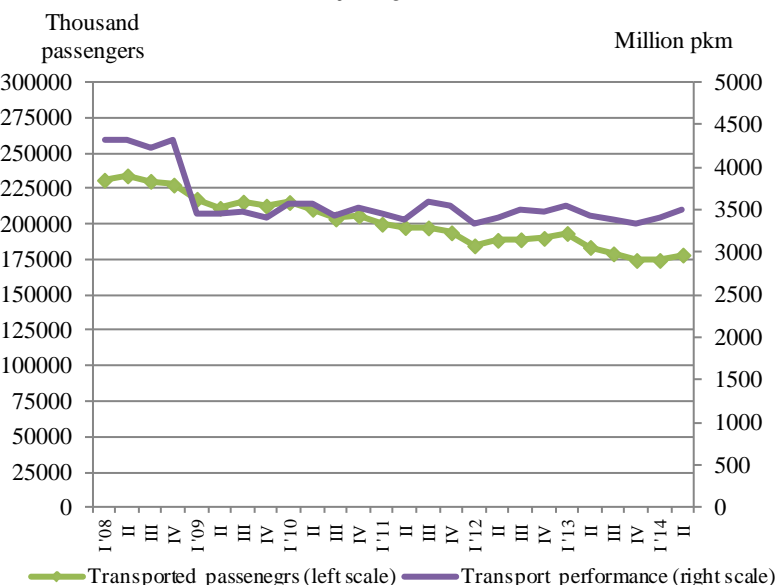


Figure 2. Transported passengers and transport performance by the passenger transport (Seasonally adjusted data)





According to preliminary non-adjusted data during the second quarter of 2014 in comparison with the same period of 2013 there was a drop in the transported goods (by 8.9%) as well in the transport performance (by 1.0%) from the land and water transport.

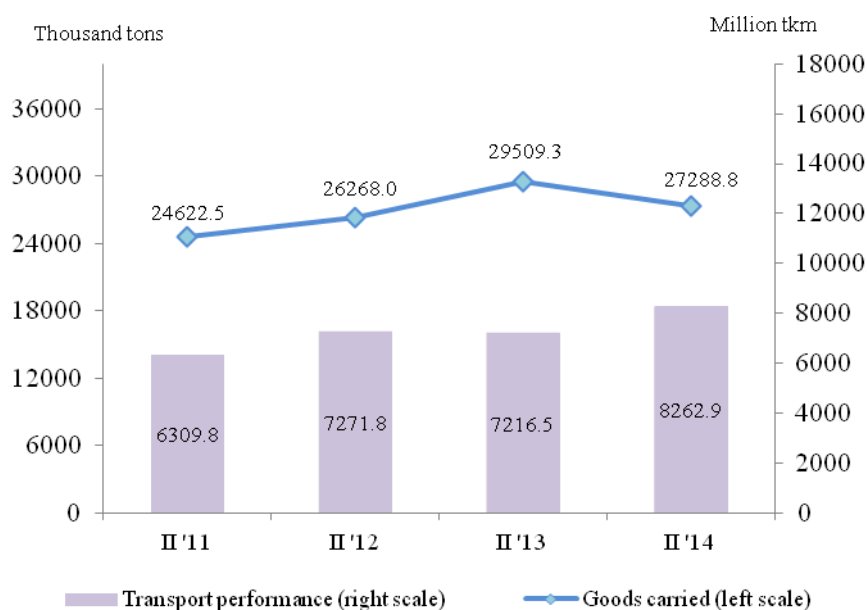
Compared to the corresponding quarter of the previous year in the second quarter of 2014 an increase was observed both in the number of transported passengers and the transport performance from the passenger transport by 0.9% and 8.4%, respectively.

Land transport

In the second quarter of 2014 the **transported goods** by the land transport were 27 288.8 thousand tons or by 7.5% less than the corresponding quarter of 2013 (Figure 3), which was due to the registered drop by 10.7% in the national carriages.

At the same time the **transport performance** rose by 14.5% compared to the second quarter of 2013 and reached 8 262.9 million tkm (Figure 3). The growth was a result of the increased average distance travelled by the international transport where a 21.9% increase was registered.

Figure 3. Transported goods and transport performance by the land transport

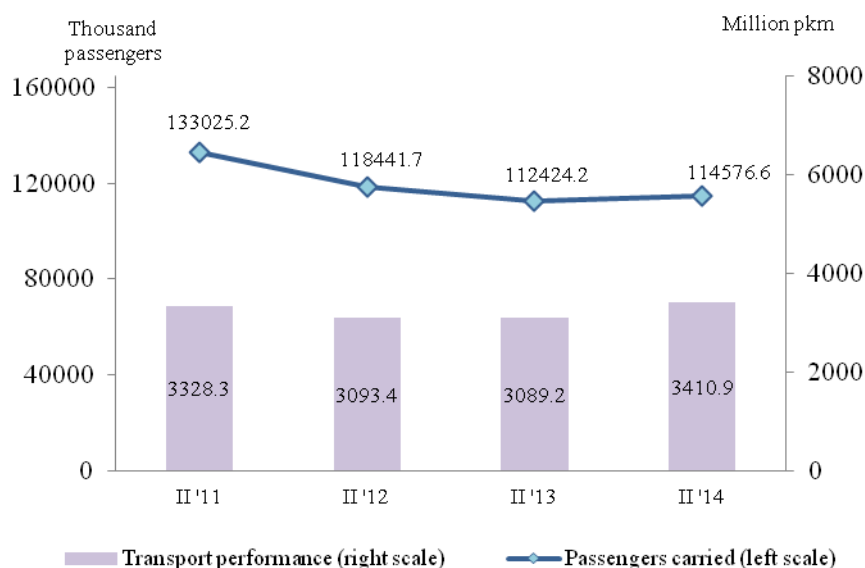


During the second quarter of 2014 the **transported passengers** from the railway and bus transport were 114 576.6 thousand or by 1.9% more than the same period of the previous year (Figure 4), which was mainly due to the increase in the national carriages – by 2.1%. The number of transported passengers by the bus transport rose by 2 532.3 thousand or by 2.4%, while in the railway transport a decline by 5.6% was observed.

The **transport performance** also registered a 10.4% growth in the second quarter of 2014 compared to the same quarter of 2013 and reached 3 410.9 million passenger-kilometres (Figure 4). The increase was due to the carriages by bus transport (growth by 13.6%), while the transport performance of the railway carriages fell by 7.1%.



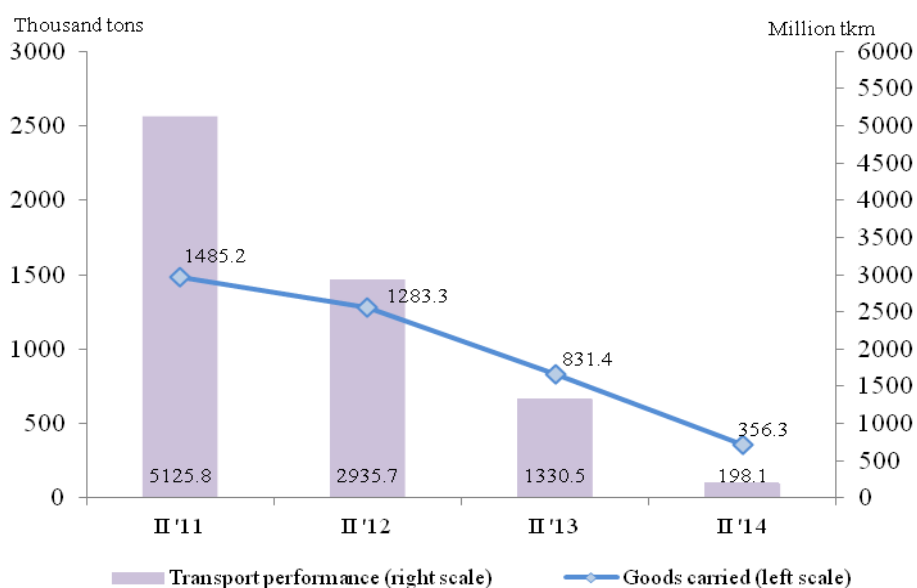
Figure 4. Transported passengers and transport performance by the land transport



Water transport

The **transported goods** as well the **transport performance** by the water transport registered a drop compared to the second quarter of 2013 – by 360.3 thousand tons and 1 132.4 million tkm, respectively (Figure 5). The registered decline was mainly due to the less volume of transported goods as well due to the less average distance travelled by the maritime transport.

Figure 5. Transported goods and transport performance by the water transport

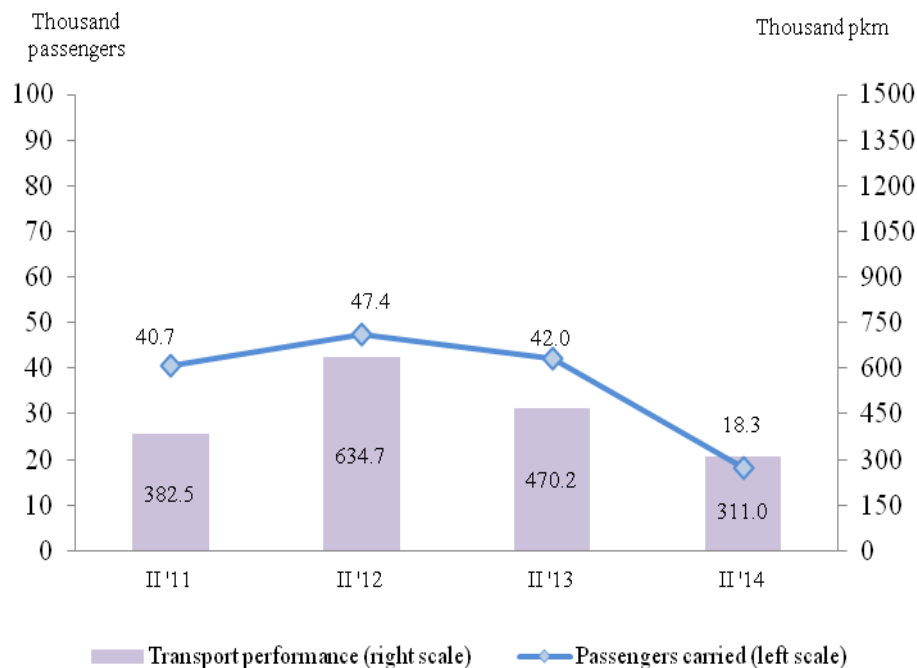




In the second quarter of 2014 the number of **transported passengers** by the water transport decreased by 56.5% in comparison with the corresponding quarter of the previous year (Figure 6). The decline was mainly due to the less number of transported passengers by the inland waterway transport.

The **transport performance** also registered a 33.9% drop compared to the second quarter of 2013. The national carriages fell by 34.5% and the international transport - by 33.6%.

Figure 6. Transported passengers and transport performance by the water transport



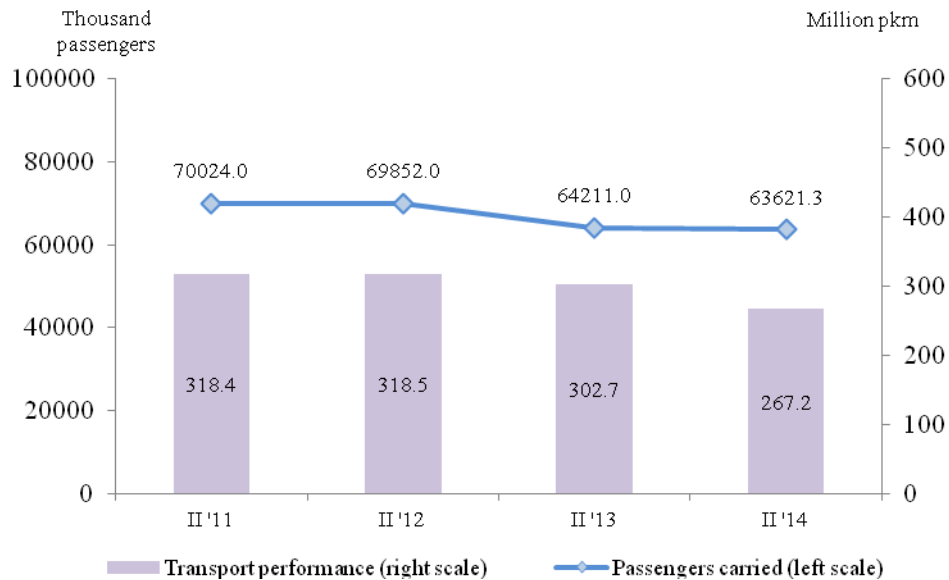
Urban electrical transport

During the second quarter of 2014 the enterprises from the urban electrical transport (trams, trolleybuses and metro) transported **63 621.3 thousand passengers** or by 0.9% less in comparison with the corresponding quarter of 2013 (Figure 7). A growth by 7.8% was observed only in the metro carriages, while the trolleybuses and the trams transport fell by 2.2% and 6.9%, respectively.

The **transport performance** also registered a 11.7% drop compared to the second quarter of 2013 and reached 267.2 million pkm, which was a result of the decreased volume of the transport performance by all types of urban electrical transport.



Figure 7. Transported passengers and transport performance by the urban electrical transport





Methodological notes

Land freight transport covers the freight carriages by road and rail transport from vehicles with Bulgarian registration as well as transmission of goods by pipelines.

Land passenger transport covers the passengers' carriages by road and rail transport from vehicles with Bulgarian registration.

Water transport covers the passengers' or freight carriages and transport performance by maritime and IWW vessels with Bulgarian registration.

Urban electrical transport includes passengers carried and transport performance of trolleybus transport in the country, tramway transport, and metro in Sofia.

Goods carried (tons) - measures the total volume of goods carried **for hire or reward** between two places (place of loading and place of unloading).

Transport performance of freight transport (tonne-kilometres) - corresponds to the transportation of one ton over one kilometre.

Passengers carried (number) - measures the total number of passengers **with paid fares** carried by the corresponding type of transport between two places (place of embarkation and place of disembarkation).

Transport performance of passenger transport (passenger-kilometres) - corresponds to the transportation of one passenger over one kilometre.

Since April 2013 the number of the transported passengers in the urban carriages for Sofia (stolitsa) has been calculated according to a new methodology applied by the "Centre for urban mobility" AD – Sofia according to which the distribution of the transported passengers from the tram, trolleybus and bus transport and the metro is made on the basis of inquiry survey of the urban carriages. In order a comparability of data to be ensured the data for 2012 were recalculated according to the new methodology.

Table 1

**Main indicators of the freight transport activity,
second quarter of 2013 and 2014**

Freight transport	II quarter 2013	II quarter 2014	Change in % compared to the II quarter of 2013
Land transport - transported goods			
Total - thousand tons	29509.3	27288.8	92.5
National	20774.7	18555.3	89.3
International	8734.6	8733.5	100.0
Land transport - transport performance			
Total - million tkm	7216.5	8262.9	114.5
National	1869.8	1742.7	93.2
International	5346.7	6520.2	121.9
Water transport - transported goods			
Total - thousand tons	831.4	356.3	42.9
National	0.7	0.6	85.7
International	830.7	355.7	42.8
Water transport - transport performance			
Total - million tkm	1330.5	198.1	14.9
National	0.2	0.2	100.0
International	1330.3	197.9	14.9



Table 2

**Main indicators of the passenger transport activity,
second quarter of 2013 and 2014**

Passenger transport	II quarter 2013	II quarter 2014	Change in % compared to the II quarter of 2013
Land transport - transported passengers			
Total - in thousands	112424.2	114576.6	101.9
National	111858.5	114162.5	102.1
International	565.7	414.1	73.2
Land transport - transport performance			
Total - million pkm	3089.2	3410.9	110.4
National	2555.5	2932.0	114.7
International	533.7	478.9	89.7
Water transport - transported passengers			
Total - in thousands	42.0	18.3	43.5
National	4.6	2.9	64.0
International	37.4	15.3	41.0
Water transport - transport performance			
Total - million pkm	0.47	0.31	66.10
National	0.14	0.09	65.50
International	0.33	0.22	66.40
Urban electrical transport - transported passengers			
Total - in thousands	64211.0	63621.3	99.1
Urban electrical transport - transport performance			
Total - million pkm	302.7	267.2	88.3