



GOODS AND PASSENGERS CARRIED AND TRANSPORT PERFORMANCE BY MODE OF TRANSPORT IN THE FIRST QUARTER OF 2014 (PRELIMINARY DATA)

According to preliminary seasonally adjusted data in the first quarter of 2014 compared to the previous quarter the goods carried by the freight transport have risen by 3.8%, while the transport performance has fallen by 2.8% (Figure 1).

In comparison with the fourth quarter of 2013 the transported passengers as well the transport performance by the passenger land, water and urban electrical transport has decreased by 14.0% and 2.5%, respectively (Figure 2).

Figure 1. Goods carried and transport performance by the freight transport
(Seasonally adjusted data)

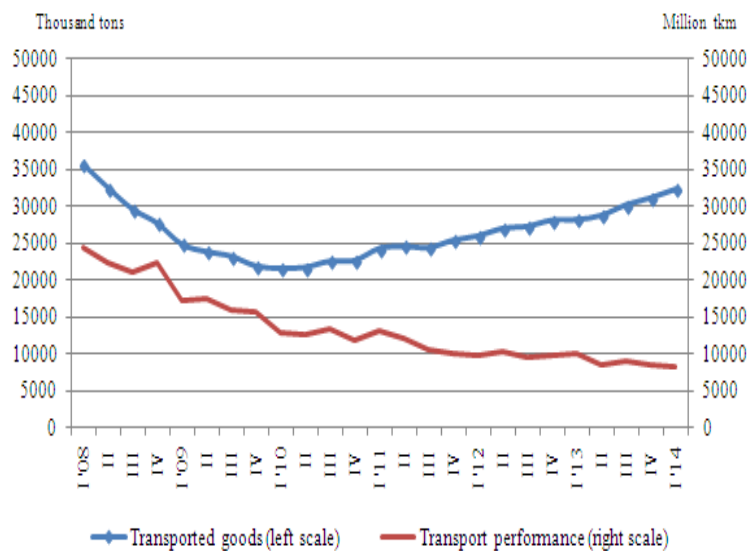
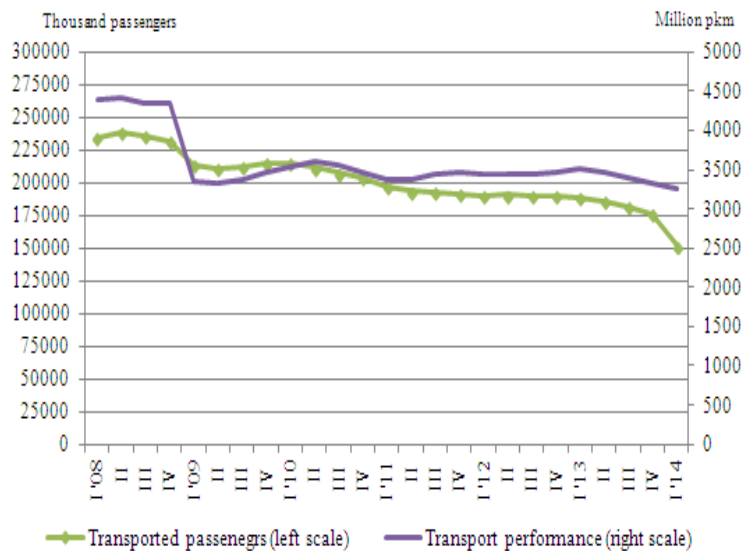


Figure 2. Transported passengers and transport performance by the passenger transport
(Seasonally adjusted data)





According to preliminary non-adjusted data during the first quarter of 2014 in comparison with the same period of 2013 an increase by 19.7% in the transported goods by land and water transport was observed, while the transport performance has fallen by 13.1%.

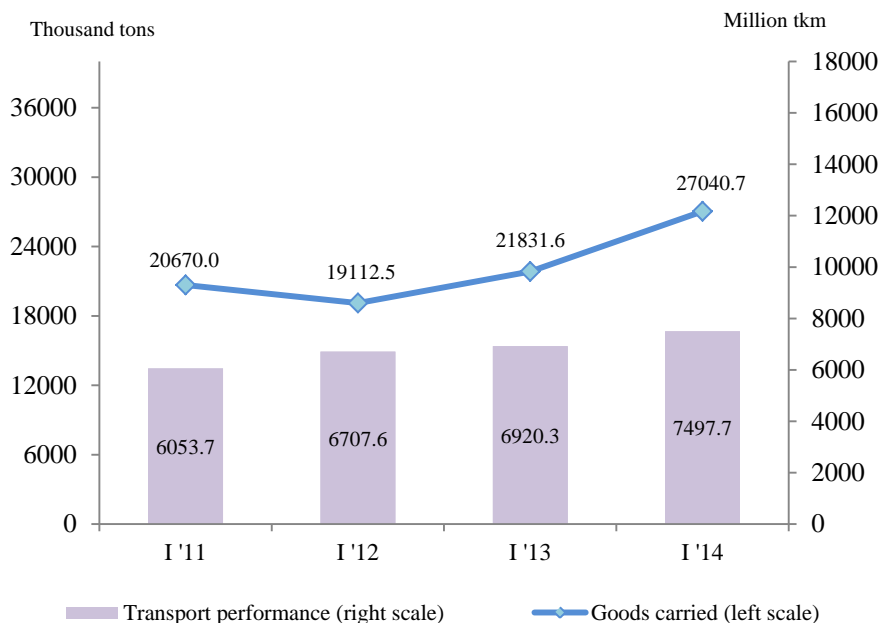
Compared to the corresponding quarter of the previous year a decrease was observed both in the number of transported passengers and the transport performance of the passenger transport by 10.6% and 4.9%, respectively.

Land transport

In the first quarter of 2014 the **transported goods** by the land transport were 27 040.7 thousand tons or by 5 209.1 thousand tons more than the corresponding quarter of 2013 (Figure 3). An increase in road freight and railway transport was observed.

The **transport performance** also has registered an 8.3% increase compared to the first quarter of 2013 and has reached 7 497.7 million tkm (Figure 3). Both national (by 1.6%) and international (by 10.4%) carriages have registered growth.

Figure 3. Transported goods and transport performance by the land transport

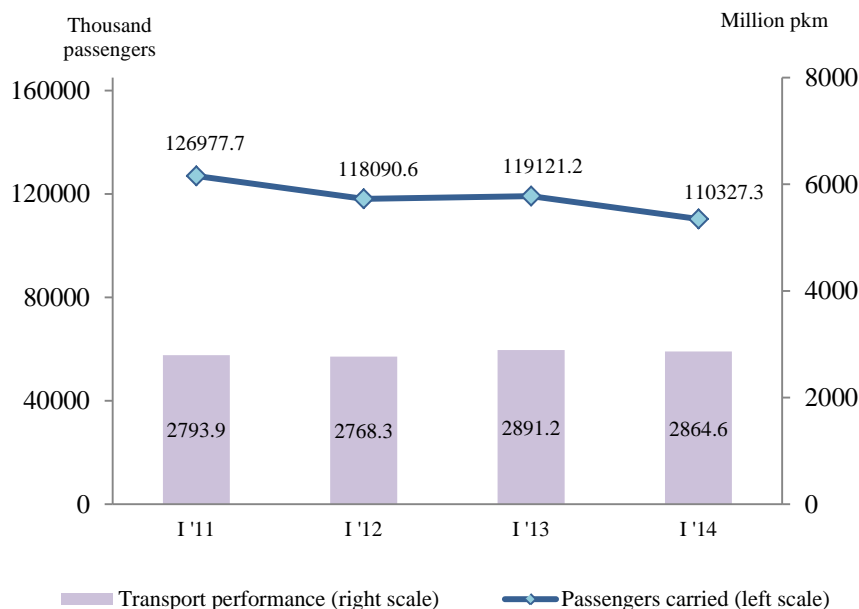


In the first quarter of 2014 the **transported passengers** from the railway and bus transport were 110 327.3 thousand or by 7.4% less than the same period of the previous year (Figure 4). The number of transported passengers by the bus transport has fallen by 7.6% and by the railway transport - by 2.6%.

The **transport performance** also registered a 0.9% drop compared to the corresponding quarter of 2013 and has reached 2 864.6 million passenger-kilometers (Figure 4). The decrease was due to the national carriages that fell by 1.8%, while the transport performance of the international carriages has increased by 5.5%.



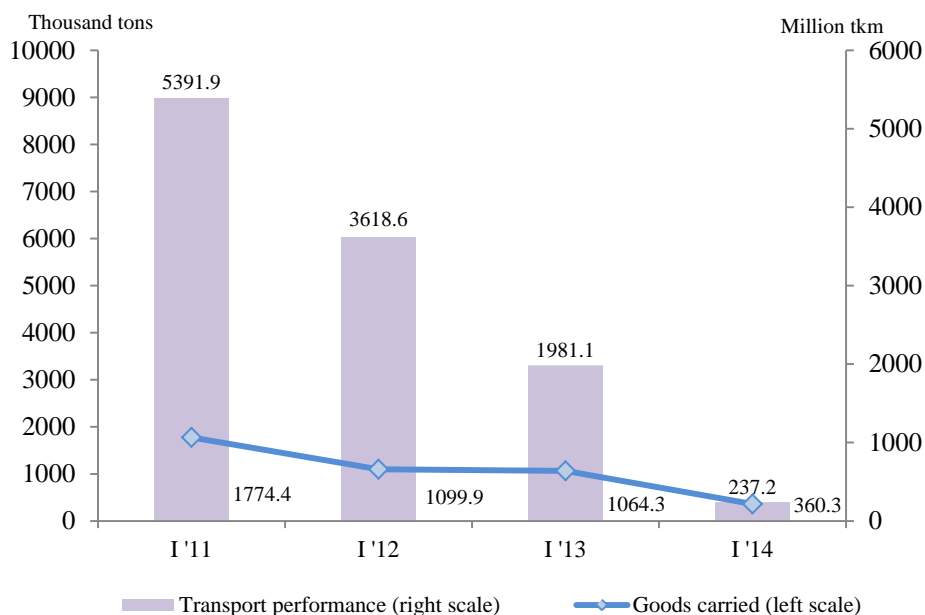
Figure 4. Transported passengers and transport performance by the land transport



Water transport

The **transported goods** as well the **transport performance** by the water transport has registered a drop compared to the first quarter of 2013 – by 704.0 thousand tons and 1 743.9 million tkm, respectively (Figure 5). The registered decline was mainly due to the lower volume of transported goods as well due to the lower average distance travelled from the maritime transport.

Figure 5. Transported goods and transport performance by the water transport

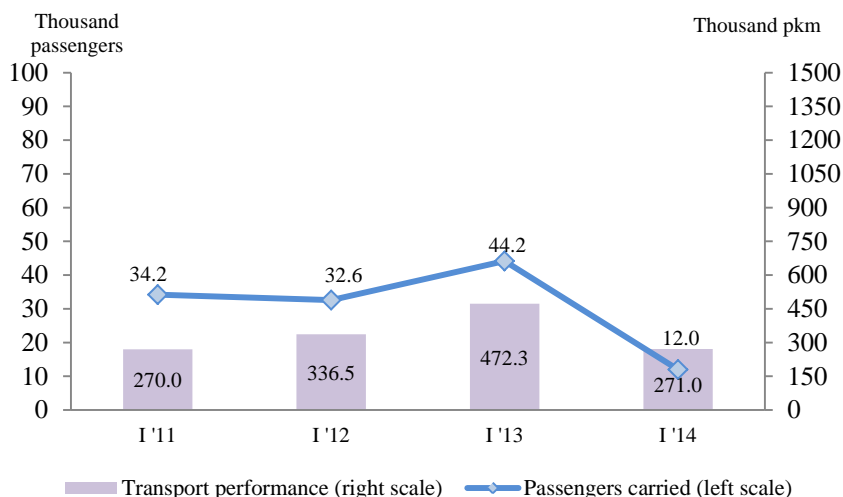




In the first quarter of 2014 the number of **transported passengers** by the water transport has declined by 72.9% in comparison with the corresponding period of the previous year (Figure 6). The decrease was mainly due to the lower number of transported passengers by the inland waterway transport.

The **transport performance** also has registered a drop by 42.6% compared to the first quarter of 2013 and has reached 271.0 million pkm. Decline was observed in all modes of urban electrical transport - trams, trolleybuses and metro.

Figure 6. Transported passengers and transport performance by the water transport

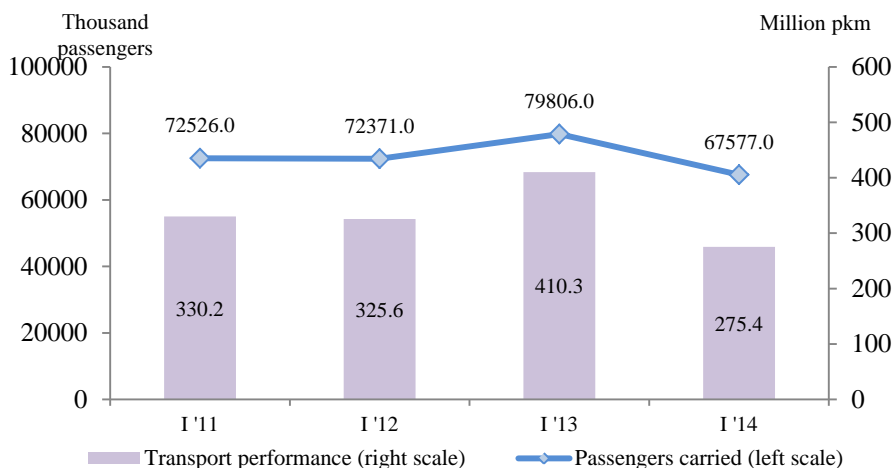


Urban electrical transport

During the first quarter of 2014 the enterprises from the urban electrical transport have transported **67 577.0 thousand passengers** or by 15.3% less in comparison with the corresponding period of previous year (Figure 7). A growth by 3.9% was observed only in the metro carriages, while the trolleybuses and the trams transport fell by 26.5% and 18.1%, respectively.

The **transport performance** also has registered a drop compared to the first quarter of 2013 and has reached 275.4 million pkm. Decline was observed in all modes of urban electrical transport - trams, trolleybuses and metro.

Figure 7. Transported passengers and transport performance by the urban electrical transport





Methodological notes

Land freight transport covers the freight carriages by road and rail transport from vehicles with Bulgarian registration as well as transmission of goods by pipelines.

Land passenger transport covers the passengers' carriages by road and rail transport from vehicles with Bulgarian registration.

Water transport covers the passengers' or freight carriages and transport performance by maritime and IWW vessels with Bulgarian registration.

Urban electrical transport includes passengers carried and transport performance of trolleybus transport in the country, tramway transport, and metro in Sofia.

Goods carried - (tons) is measured the total volume of goods carried **for hire or reward** between two places (place of loading and place of unloading).

Transport performance of freight transport (tonne-kilometres) - corresponds to the transportation of one ton over one kilometre.

Passengers carried (number) - measures the total number of passengers **with paid fares** carried by the corresponding type of transport between two places (place of embarkation and place of disembarkation).

Transport performance of passenger transport (passenger-kilometers) - corresponds to the transportation of one passenger over one kilometre.

Since April 2013 the number of the transported passengers in the urban carriages for Sofia (stolitsa) is calculated according to new methodology applied by the "Centre for urban mobility" AD – Sofia according to which the distribution of the transported passengers from the tram, trolleybus and bus transport and the metro is made on the basis of inquiry survey of the urban carriages. In order a comparability of data to be ensured the data for 2012 were recalculated according to the new methodology.



Annex

Table 1

**Main indicators of the freight transport activity,
first quarter of 2013 and 2014**

Freight transport	I-st quarter 2013	I-st quarter 2014	Change in % compared to the first quarter of 2013
Land transport - transported goods			
Total - thousand tons	21831.6	27040.7	123.9
National	14149.1	19190.4	135.6
International	7682.5	7850.3	102.2
Land transport - transport performance			
Total - million tkm	6920.3	7497.7	108.3
National	1604.1	1630.5	101.6
International	5316.2	5867.2	110.4
Water transport - transported goods			
Total - thousand tons	1064.3	360.3	33.9
National	2.7	-	-
International	1061.6	360.3	33.9
Water transport - transport performance			
Total - million tkm	1981.1	237.2	12.0
National	0.6	-	-
International	1980.5	237.2	12.0

“-“ – no case



Table 2

**Main indicators of the passenger transport activity,
first quarter of 2013 and 2014**

Passenger transport	I-st quarter 2013	I-st quarter 2014	Change in % compared to the first quarter of 2013
Land transport - transported passengers			
Total - thousands	119121.2	110327.3	92.6
National	118721.2	109988.3	92.6
International	400.0	339.0	84.7
Land transport - transport performance			
Total - million pkm	2891.2	2864.6	99.1
National	2538.2	2492.1	98.2
International	353.0	372.5	105.5
Water transport - transported passengers			
Total - thousands	44.2	12.0	27.1
National	-	-	-
International	44.2	12.0	27.1
Water transport - transport performance			
Total - million pkm	0.47	0.27	57.40
National	-	-	-
International	0.47	0.27	57.40
Urban electrical transport - transported passengers			
Total - thousands	79806.0	67577.0	84.7
Urban electrical transport - transport performance			
Total - million pkm	410.3	275.4	67.1

“-” – no case