



GOODS AND PASSENGERS CARRIED AND TRANSPORT PERFORMANCE BY MODE OF TRANSPORT IN THE THIRD QUARTER OF 2013 (PRELIMINARY DATA)

According to preliminary seasonally adjusted data in the third quarter of 2013 compared to the previous quarter both the goods carried and the transport performance by the freight transport rose by 0.8% and 3.9%, respectively (Figure 1).

In comparison with the second quarter of 2013 the transported passengers by the passenger land, water and urban electrical transport decreased by 0.8%, while the transport performance increased by 0.9% (Figure 2).

Figure 1. Goods carried and transport performance by the freight transport
(Seasonally adjusted data)

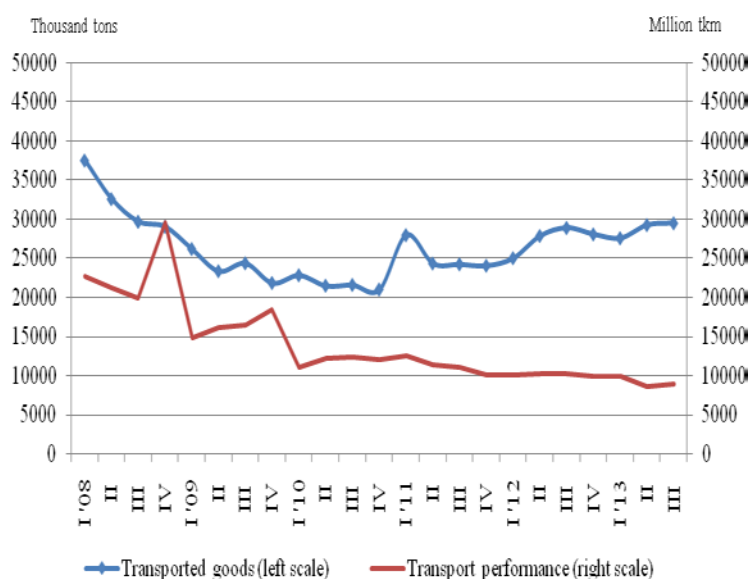
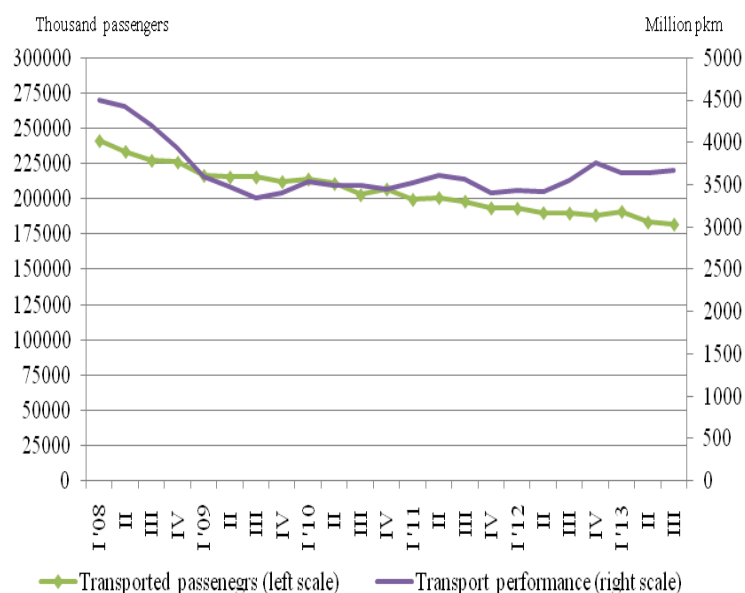


Figure 2. Transported passengers and transport performance by the passenger transport
(Seasonally adjusted data)





According to preliminary non-adjusted data during the third quarter of 2013 in comparison with the same period of 2012 an increase in the transported goods by land and water transport by 15.2% was observed, while the transport performance fell by 5.3%.

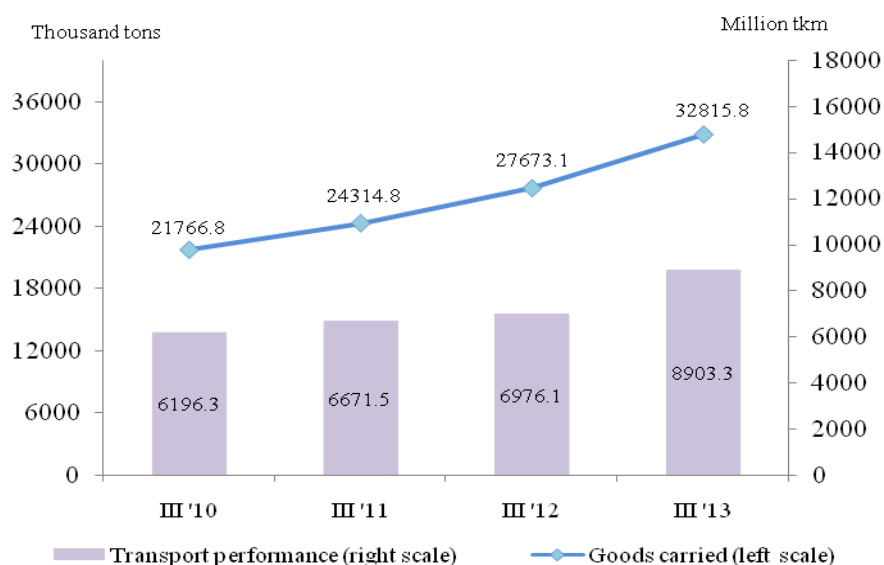
Compared to the corresponding quarter of the previous year both the transported passengers and the transport performance by land, water and urban electrical transport fell by 7.6% and 1.3%, respectively.

Land transport

In the third quarter of 2013 the **transported goods** by the land transport were 32 815.8 thousand tons or by 5 142.7 thousand tons more than the corresponding quarter of 2012 (Figure 3). An increase in all modes of land transport was observed.

The **transport performance** also registered a 27.6% increase compared to the third quarter of 2012 and reached 8 903.3 million tkm (Figure 3). Both national and international carriages registered a growth due to the increased average distance travelled on which the goods were transported.

Figure 3. Transported goods and transport performance by the land transport and by quarters

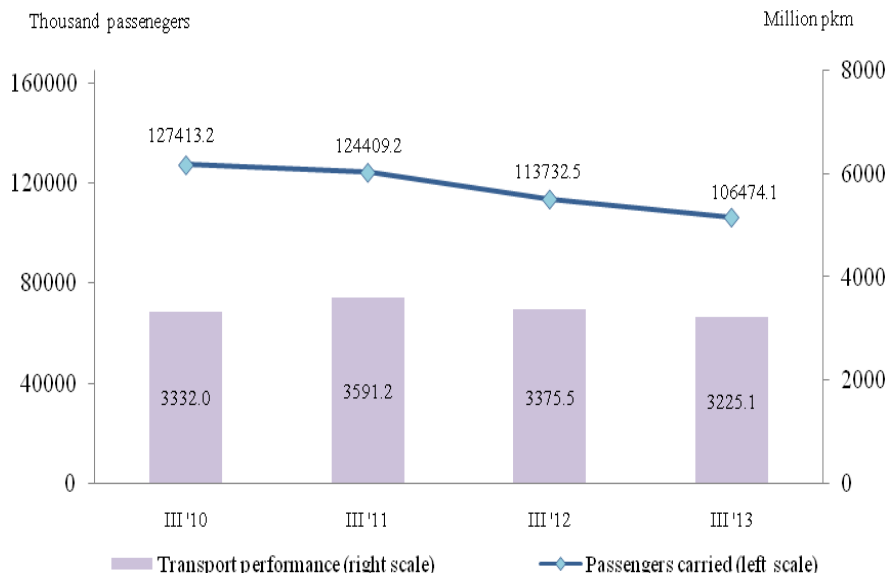


According to preliminary data of NSI during the third quarter of 2013 the **transported passengers** by land transport were by 6.4% less than the same period of the previous year (Figure 4). The decline was due to the less number of passengers transported by the railway transport (by 1.6%) as well by the bus transport (by 6.7%).

The **transport performance** measured in passenger-kilometres also decreased by 4.5% compared to the third quarter of 2012 and reached 3 225.1 million pkm (Figure 4). A 2.5% growth by the international carriages was observed, while the transport performance in the national carriages fell by 6.0%.



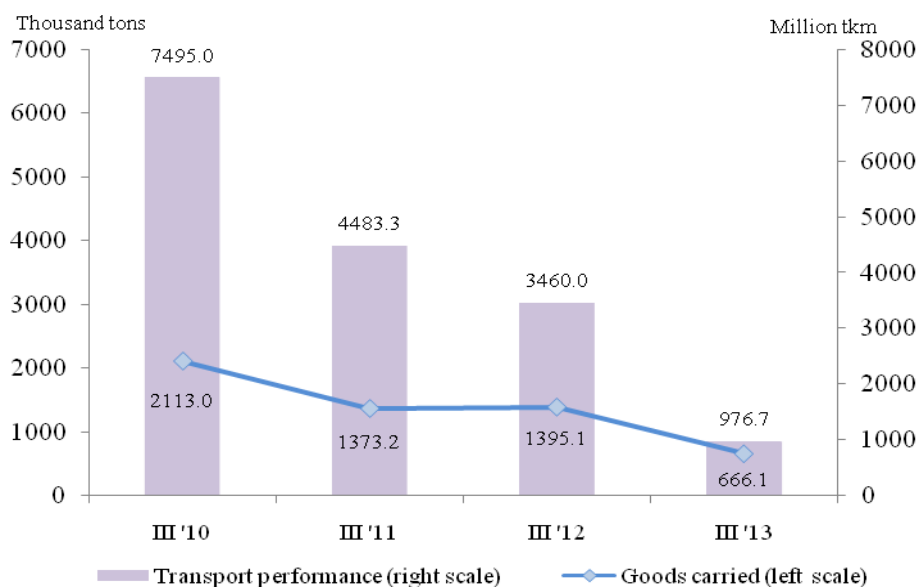
Figure 4. Transported passengers and transport performance by the land transport



Water transport

The **transported goods** as well the **transport performance** by the water transport registered a drop compared to the corresponding quarter of 2012 – by 729 thousand tons and 2483.3 million tkm, respectively (Figure 5).

Figure 5. Transported goods and transport performance by the water transport

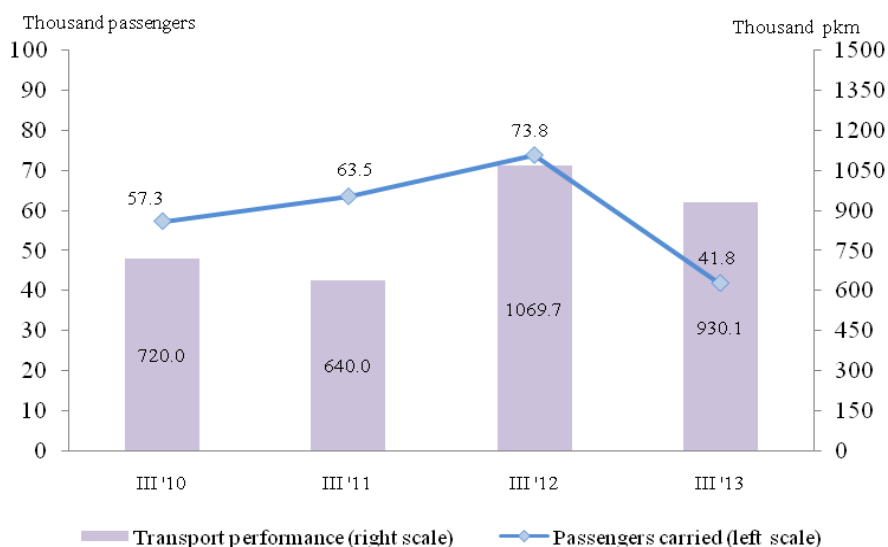


In the third quarter of 2013 the number of **transported passengers** by the water transport declined by 43.3% in comparison with the corresponding period of the previous year (Figure 6). The decrease was mainly due to the less number of transported passengers by the inland waterway transport.



www.nsi.bg
 The **transport performance** also fell by 13.1% compared to the third quarter of 2012 mainly due to the international carriages which decreased by 41.3% (Figure 6).

Figure 6. Transported passengers and transport performance by the water transport

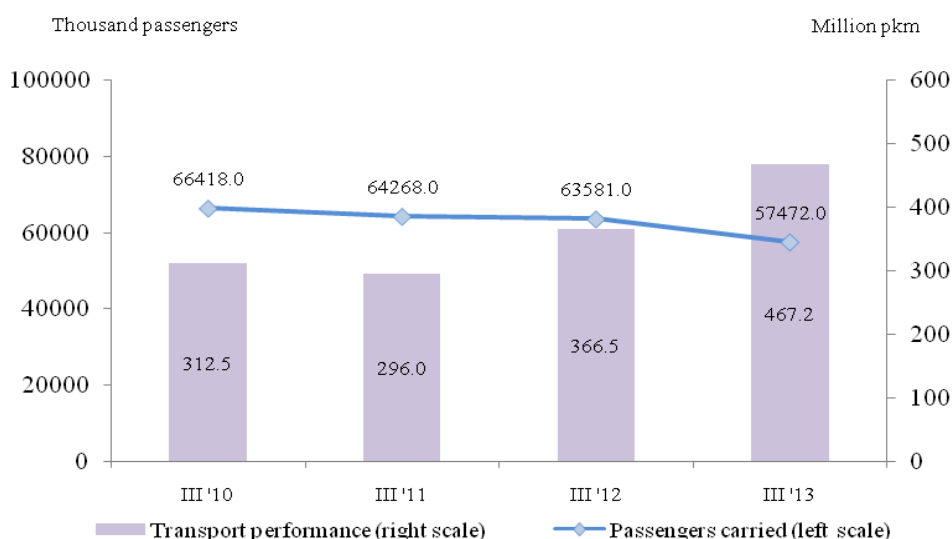


Urban electrical transport

During the third quarter of 2013 the enterprises from the urban electrical transport (trams, trolleybuses and metro) transported **57 472 thousand passengers** or by 9.6% less in comparison with the corresponding quarter of 2012 (Figure 7). A growth by 25.3% was observed only in the metro carriages.

The **transport performance** reached 467.2 million pkm and registered a 27.5% increase compared to the third quarter of 2012, which was a result of the increased average distance travelled (by 4 km) on which the passengers by the metro were transported.

Figure 7. Transported passengers and transport performance by the urban electrical transport





Methodological notes

Land freight transport covers the freight carriages by road and rail transport from vehicles with Bulgarian registration as well as transmission of goods by pipelines.

Land passenger transport covers the passengers' carriages by road and rail transport from vehicles with Bulgarian registration.

Water transport covers the passengers' or freight carriages and transport performance by maritime and IWW vessels with Bulgarian registration.

Urban electrical transport includes passengers carried and transport performance of trolleybus transport in the country, tramway transport, and metro in Sofia.

Goods carried - (tons) is measured the total volume of goods carried **for hire or reward** between two places (place of loading and place of unloading).

Transport performance of freight transport (tonne-kilometres) - corresponds to the transportation of one ton over one kilometre.

Passengers carried (number) - measures the total number of passengers **with paid fares** carried by the corresponding type of transport between two places (place of embarkation and place of disembarkation).

Transport performance of passenger transport (passenger-kilometers) - corresponds to the transportation of one passenger over one kilometer.

Since April 2013 the number of the transported passengers in the urban carriages for district Sofia (stolitsa) is calculated according to new methodology applied by the "Centre for urban mobility" AD – Sofia according to which the distribution of the transported passengers from the tram, trolleybus and bus transport and the metro is made on the basis of inquiry survey of the urban carriages. In order a comparability of data to be ensured the data for 2012 were recalculated according to the new methodology.

Table 1

**Main indicators of the freight transport activity,
third quarter of 2012 and 2013**

Freight transport	III-rd quarter 2012	III-rd quarter 2013	III-rd quarter of 2013 compared to III-rd quarter of 2012 in %
Land transport - transported goods			
Total - thousand tons	27673.1	32815.8	118.6
National	19941.3	23219.2	116.4
International	7731.8	9596.6	124.1
Land transport - transport performance			
Total - million tkm	6976.1	8903.3	127.6
National	1723.3	2203.6	127.9
International	5252.8	6699.7	127.5
Water transport - transported goods			
Total - thousand tons	1395.1	666.1	47.7
National	16.6	8.2	49.4
International	1378.5	657.9	47.7
Water transport - transport performance			
Total - million tkm	3460.0	976.7	28.2
National	3.1	0.4	13.2
International	3456.9	976.3	28.2



Table 2

**Main indicators of the passenger transport activity,
third quarter of 2012 and 2013**

Passenger transport	III-rd quarter 2012	III-rd quarter 2013	III-rd quarter of 2013 compared to III-rd quarter of 2012 in %
Land transport - transported passengers			
Total - thousands	113732.5	106474.1	93.6
National	112920.5	105728.0	93.6
International	812.0	746.1	91.9
Land transport - transport performance			
Total - million pkm	3375.5	3225.1	95.5
National	2750.4	2584.3	94.0
International	625.1	640.8	102.5
Water transport - transported passengers			
Total - thousands	73.8	41.8	56.7
National	13.4	18.6	138.4
International	60.4	23.3	38.6
Water transport - transport performance			
Total - million pkm	1.07	0.93	86.9
National	0.41	0.54	132.0
International	0.66	0.39	58.7
Urban electrical transport - transported passengers			
Total - thousands	63581.0	57472.0	90.4
Urban electrical transport - transport performance			
Total - million pkm	366.5	467.2	127.5