



GOODS AND PASSENGERS CARRIED AND TRANSPORT PERFORMANCE BY MODE OF TRANSPORT IN THE FOURTH QUARTER OF 2012 (PRELIMINARY DATA)

According to the preliminary seasonally adjusted data of NSI in the fourth quarter of 2012 the goods carried by the land and water transport rose by 3.7% than the previous quarter. The transport performance registered a drop by 4.4% (Figure 1).

In comparison with the third quarter of 2012 the transported passengers by the land, water and urban electrical transport increased by 3.6% and the transport performance by 3.9% (Figure 2).

Figure 1. Goods carried and transport performance by the freight transport (Seasonally adjusted data)

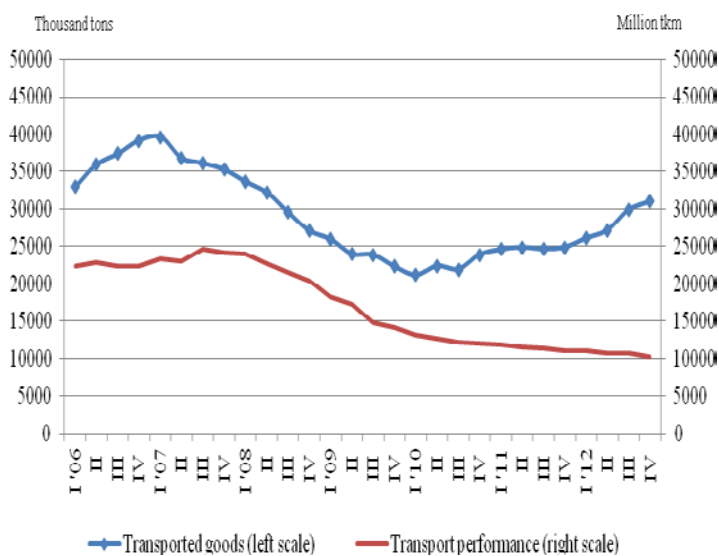
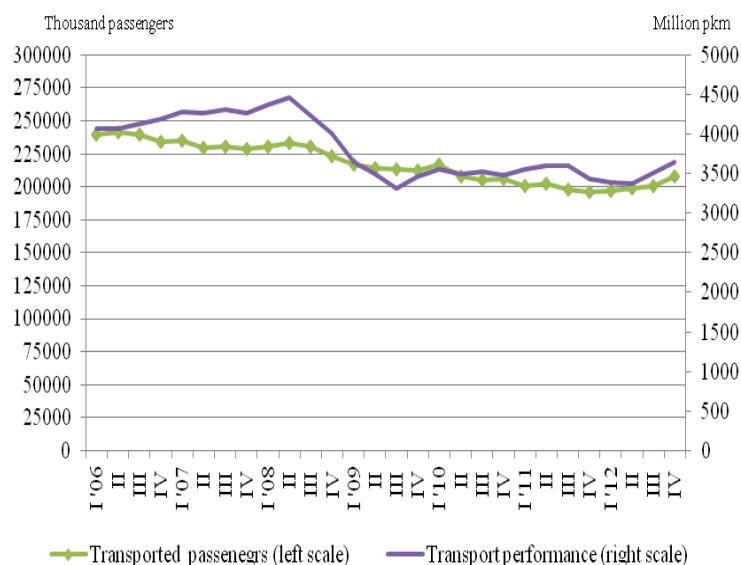


Figure 2. Transported passengers and transport performance by the passenger transport (Seasonally adjusted data)



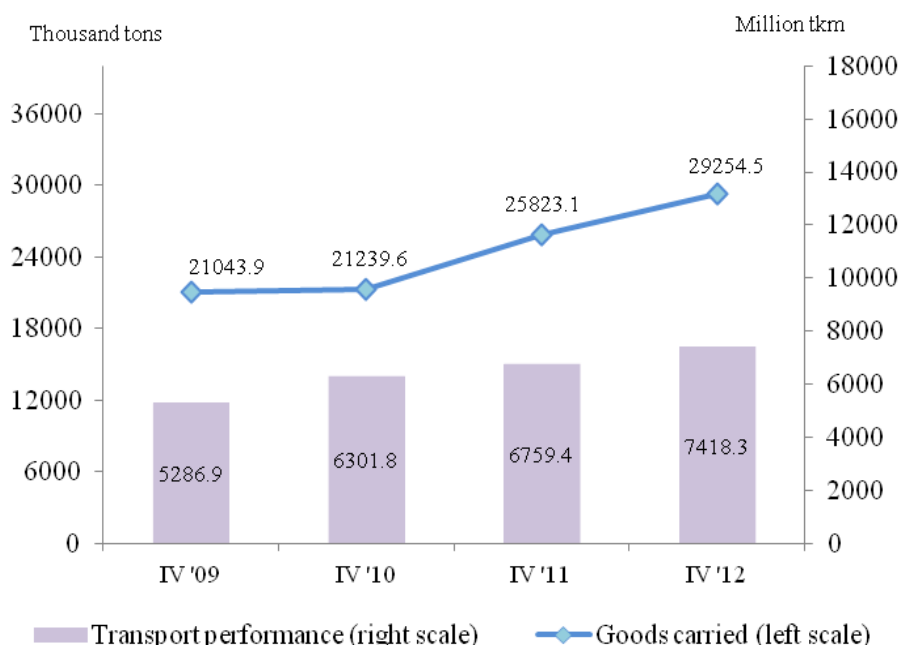


Land transport

In the fourth quarter of 2012 the **transported goods** by the land transport increased by 3 431.4 thousand tons or by 13.3% compared to the corresponding quarter of 2011 (Figure 3). There was a growth both in national (by 17.4%) and international carriages (by 3.3%). A decline in the transported goods from railway and gas pipeline transport was observed – by 10.5% and 12.8%, correspondingly.

The **transport performance** also registered a 9.7% increase and reached 7 418.3 Million tkm (Figure 3). The growth in the transport performance in the international carriages was by 12.9% and by the national carriages - by 2.1%.

Figure 3. Transported goods and transport performance by the land transport

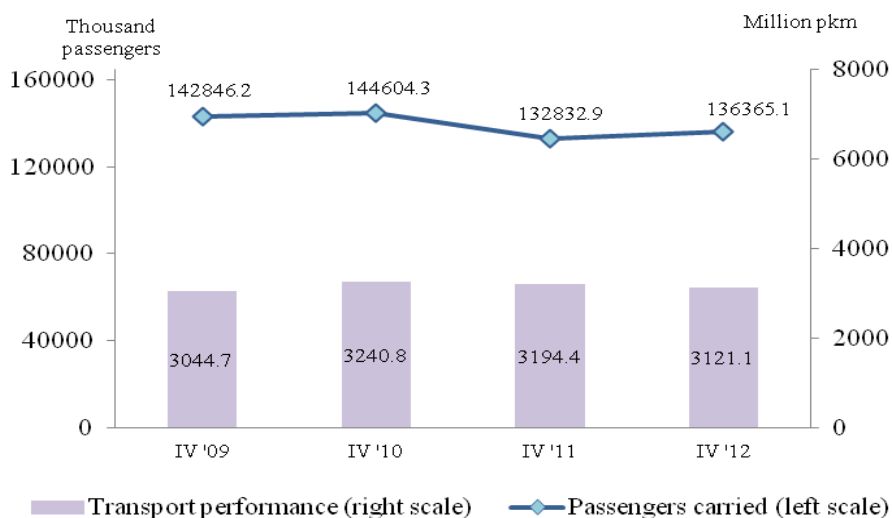


During the fourth quarter of 2012 the **transported passengers** from the railway and bus transport were 136 365.1 thousand or by 2.7% more than the corresponding period of the previous year (Figure 4). The increase was due to the transported passengers by the bus transport that rose by 2.8%, while by the railway transport was registered a 0.2% drop.

At the same time the transport performance fell by 2.3% compared to the fourth quarter of 2011 and reached 3 121.1 Million passenger-kilometres (Figure 4). The registered decline was mainly due to the drop by 3.2% in the national carriages, while the transport performance of the international carriages increased by 3.0%.



Figure 4. Transported passengers and transport performance by the land transport

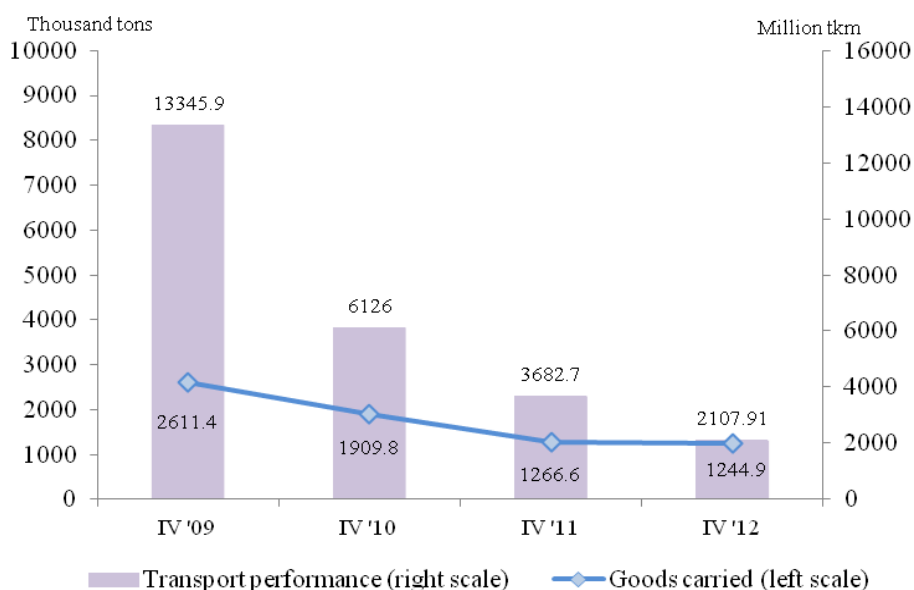


Water transport

The **goods transported** by the water transport in the fourth quarter of 2012 fell by 1.7% compared to the corresponding quarter of 2011, which is due to the less volume of the transported goods from the maritime transport (Figure 5).

The **transport performance** measured in tonne-kilometres also registered a drop by 42.8% compared to the fourth quarter of 2011 (Figure 5). The drop in the goods carried and in the transport performance was mainly due to the decreased performance by the maritime transport (by 48.4%).

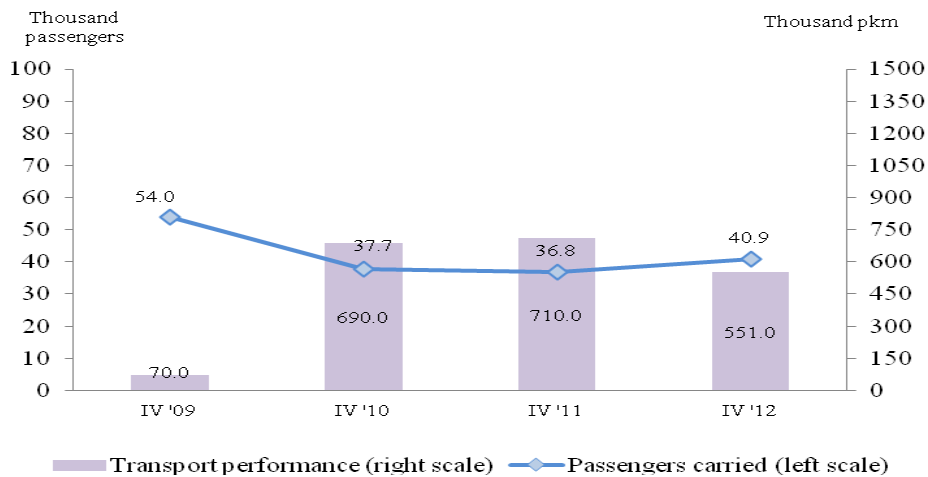
Figure 5. Transported goods and transport performance by the water transport





www.nsi.bg
 During the fourth quarter of 2012 by the **water passenger transport** there was an increase by 11.1% in comparison with the same quarter of the previous year. At the same time the **transport performance** fell by 22.4%, which was mainly due to the maritime transport (Figure 6).

Figure 6. Transported passengers and transport performance by the water transport

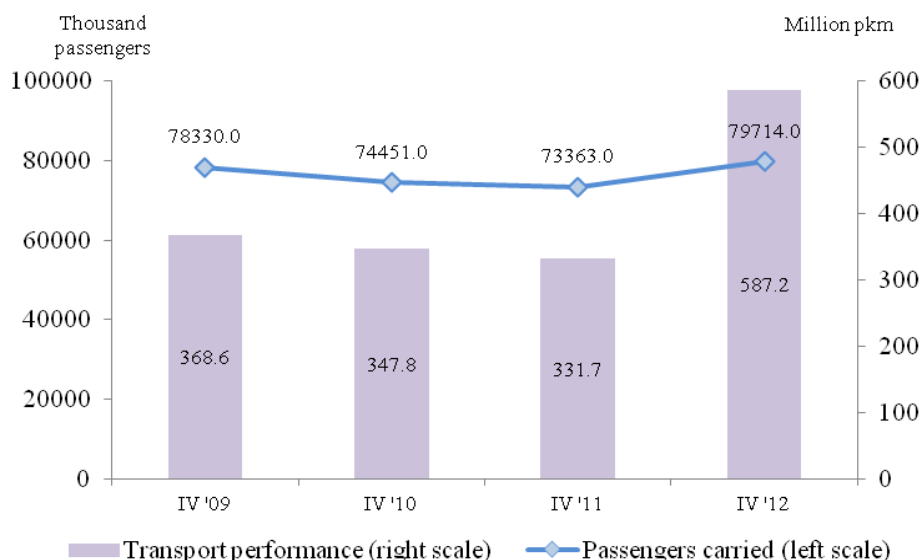


Urban electrical transport

In the fourth quarter of 2012 the **passengers transported** by the urban electrical transport (trams, trolleybuses and metro) were **79 714.0** thousand or by 8.7% more in comparison with the corresponding quarter of 2011 (Figure 7). The growth was mainly due to the increased volume of the transported passengers by the metro (by 43.5%), while the trolleybus transport registered a 1.7% drop.

The **transport performance** reached 587.2 Million pkm and also registered a 77.0% increase compared to the corresponding quarter of 2011 and was a result of the increase of the average distance travelled (by 9 km) on which the passengers were transported by the metro.

Figure 7. Transported passengers and transport performance by the urban electrical transport





Methodological notes

Land freight transport covers the freight carriages by road and rail transport from vehicles with Bulgarian registration as well as transmission of goods by pipelines.

Land passenger transport covers the passengers' carriages by road and rail transport from vehicles with Bulgarian registration.

Water transport covers the passengers' or freight carriages and transport performance by maritime and IWW vessels with Bulgarian registration.

Urban electrical transport includes passengers carried and transport performance of trolleybus transport in the country, tramway transport, and metro in Sofia.

Goods carried - (tons) is measured the total volume of goods carried **for hire or reward** between two places (place of loading and place of unloading).

Transport performance of freight transport (tonne-kilometres) - corresponds to the transportation of one ton over one kilometre.

Passengers carried (number) - measures the total number of passengers **with paid fares** carried by the corresponding type of transport between two places (place of embarkation and place of disembarkation).

Transport performance of passenger transport (passenger-kilometers) - corresponds to the transportation of one passenger over one kilometer.

Table 1

**Main indicators of the freight transport activity,
fourth quarter of 2011 and 2012**

| Freight transport | IV th quarter 2011 | IV th quarter 2012 | IV th quarter of 2012 compared to IV th quarter of 2011 in % |
|---|-------------------------------------|-------------------------------------|---|
| Land transport - transported goods | | | |
| Total - thousand tons | 25823.1 | 29254.5 | 113.3 |
| National | 18277.2 | 21458.0 | 117.4 |
| International | 7545.9 | 7796.5 | 103.3 |
| Land transport - transport performance | | | |
| Total - million tkm | 6759.4 | 7418.3 | 109.7 |
| National | 1961.3 | 2002.0 | 102.1 |
| International | 4798.1 | 5416.3 | 112.9 |
| Water transport - transported goods | | | |
| Total - thousand tons | 1266.6 | 1244.9 | 98.3 |
| National | 9.5 | 3.4 | 35.8 |
| International | 1257.1 | 1241.5 | 98.8 |
| Water transport - transport performance | | | |
| Total - million tkm | 3682.7 | 2107.9 | 57.2 |
| National | 1.4 | 0.3 | 21.4 |
| International | 3681.3 | 2107.6 | 57.3 |



Table 2

**Main indicators of the passenger transport activity,
fourth quarter of 2011 and 2012**

| Passenger transport | IV th quarter 2011 | IV th quarter 2012 | IV th quarter of 2012 compared to IV th quarter of 2011 in % |
|---|-------------------------------------|-------------------------------------|---|
| Land transport - transported passengers | | | |
| Total - thousands | 132832.9 | 136365.1 | 102.7 |
| National | 132411.7 | 135850.5 | 102.6 |
| International | 421.2 | 514.6 | 122.2 |
| Land transport - transport performance | | | |
| Total - million pkm | 3194.4 | 3121.1 | 97.7 |
| National | 2733.0 | 2646.1 | 96.8 |
| International | 461.4 | 475.0 | 102.9 |
| Water transport - transported passengers | | | |
| Total - thousands | 36.8 | 40.9 | 111.1 |
| National | - | - | - |
| International | 36.8 | 40.9 | 111.1 |
| Water transport - transport performance | | | |
| Total - million pkm | 0.71 | 0.55 | 77.60 |
| National | - | - | - |
| International | 0.71 | 0.55 | 77.60 |
| Urban electrical transport - transported passengers | | | |
| Total - thousands | 73363.0 | 79714.0 | 108.7 |
| Urban electrical transport - transport performance | | | |
| Total - million pkm | 331.7 | 587.2 | 177.0 |