

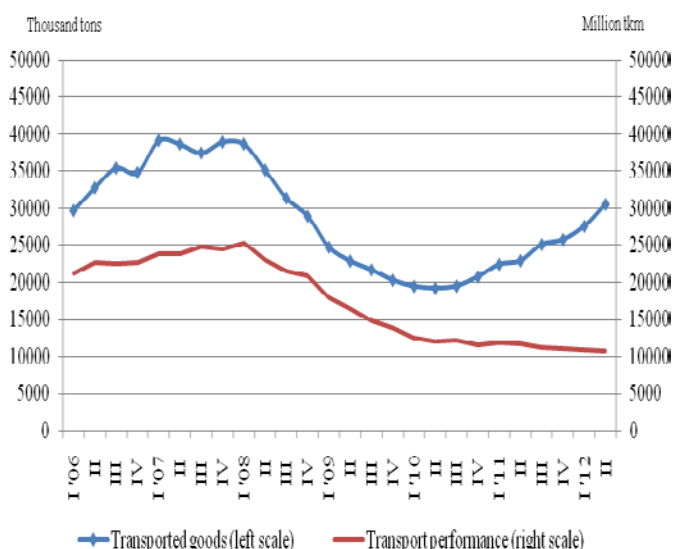


GOODS AND PASSENGERS CARRIED AND TRANSPORT PERFORMANCE BY MODE OF TRANSPORT IN THE THIRD QUARTER OF 2012 (PRELIMINARY DATA)

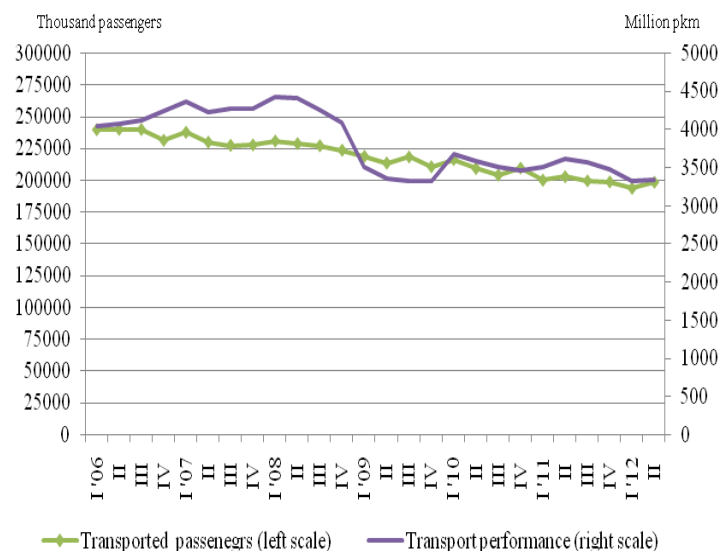
According to the preliminary seasonally adjusted data of NSI in the third quarter of 2012 the goods carried by the land and water transport rose by 7.4% than the previous quarter. The transport performance, which is a result of the actual distance on which the goods are transported, registered a drop by 6.4% (Figure 1).

In comparison with the second quarter of 2012 the transported passengers by the land, water and urban electrical transport increased by 0.1% and the transport performance by 4.1% (Figure 2).

**Figure 1. Goods carried and transport performance by the freight transport
(Seasonally adjusted data)**



**Figure 2. Transported passengers and transport performance by the passenger transport
(Seasonally adjusted data)**



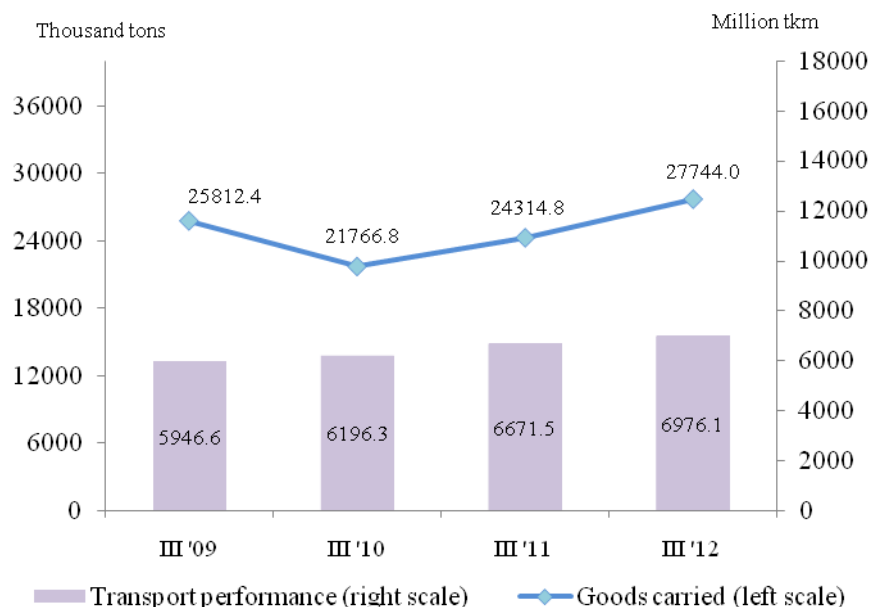


Land transport

In the third quarter of 2012 the **transported goods** by the land transport increased by 3 429.2 thousand tons or by 14.1% compared to the corresponding quarter of 2011 (Figure 3). There was a growth both in national and international carriages. The increase by the national carriages is mainly due to the pipeline transport that registered a 26.3% rise. By the international carriages the transported goods are by 12% more, which is a result of the cross trade¹ road freight transport where a growth of 1 194 thousand tons is observed.

The **transport performance** also registered a 4.6% increase and reached 6 976.1 million tkm (Figure 3). The growth in the transport performance in the international carriages was by 6.4%, while in the national carriages it fell by 0.7%.

Figure 3. Transported goods and transport performance by the land transport



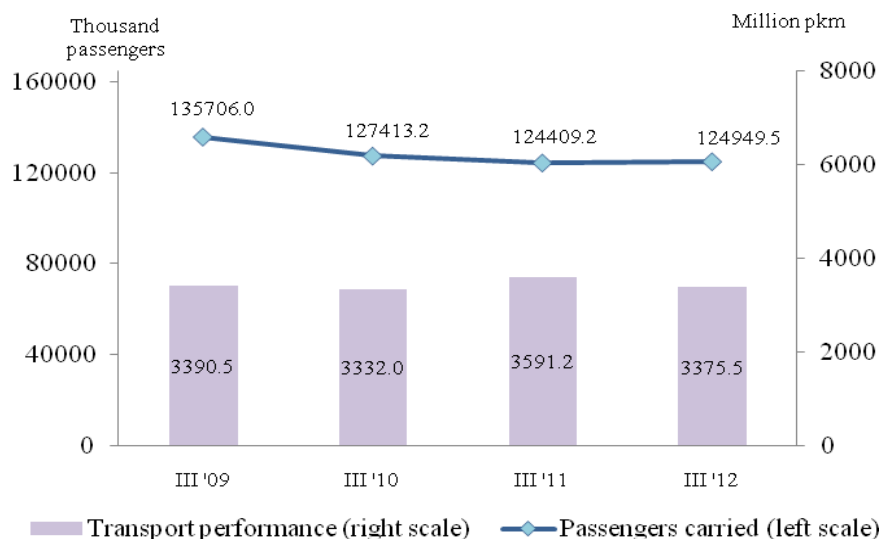
During the third quarter of 2012 the **transported passengers** from the railway and bus transport were 124 949.5 thousand or by 0.4% more than the corresponding period of the previous year (Figure 4). The increase is mainly due to international carriages by the bus transport that rose by 35.6%, while the total number of the transported passengers by the railway transport fell by 12.2%.

At the same time the transport performance fell by 6.0% compared to the third quarter of 2011 and reached 3 375.5 million passenger-kilometers (Figure 4). The decline was due to the national carriages in railway and bus transport where the drop was by 14.0% and 5.6%, respectively.

¹ Road transport performed by a road motor vehicle with Bulgarian registration between a place of loading in a second country and place of unloading in a third country.



Figure 4. Transported passengers and transport performance by the land transport

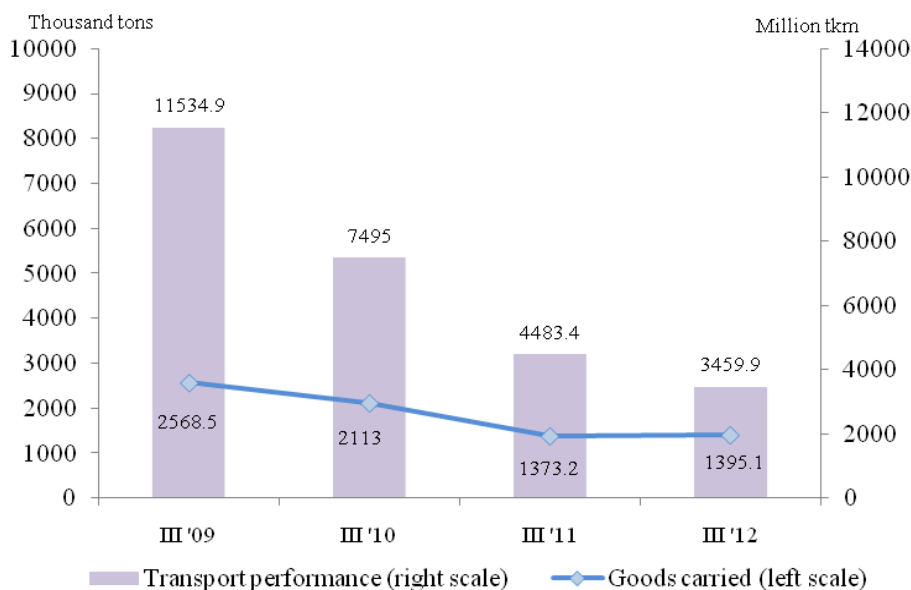


Water transport

The **goods transported** by the water transport in the third quarter of 2012 rose by 1.6% compared to the corresponding quarter of 2011, which is due to the bigger volume of the transported goods from the inland waterway transport (Figure 5). By the maritime transport, which in the reference quarter has performed only international carriages the transported goods fell by 9.1%.

At the same time the **transport performance** measured in tonne-kilometers registered a drop by 22.8% compared to the third quarter of 2011 (Figure 5). By the maritime transport there was a 23.9% decline and is due to the less average distance travelled.

Figure 5. Transported goods and transport performance by the water transport

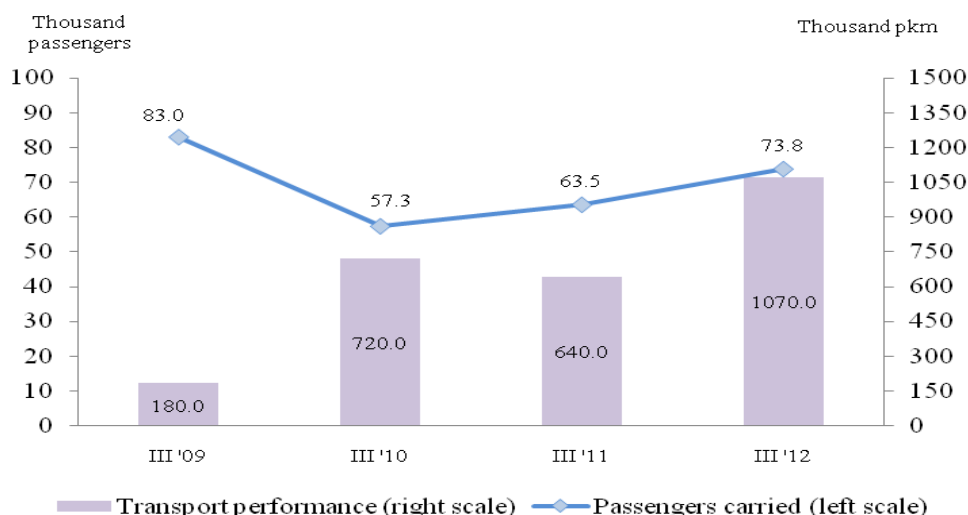




www.nsi.bg

During the third quarter of 2012 by the water passenger transport there was an increase both in the transported passengers and in the transport performance – by 10.3 thousand passengers and 430 thousand pkm, respectively (Figure 6). The growth is due to the maritime as well to the inland waterway transport that transported more passengers at larger distance.

Figure 6. Transported passengers and transport performance by the water transport

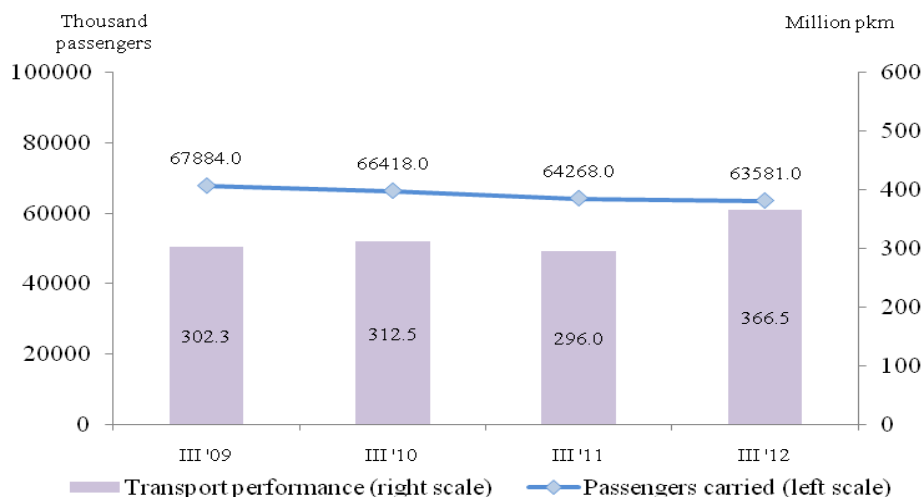


Urban electrical transport

In the third quarter of 2012 the **passengers transported** by the urban electrical transport (trams, trolleybuses and metro) were 63 581.0 thousand or by 1.1% less in comparison with the corresponding quarter of 2011 (Figure 7). Only the transported passengers by the metro registered a 2.0% growth, while by the tram and trolleybus transport there was a decline of 2.7% and 1.2%, respectively.

At the same time the **transport performance** reached 366.5 million pkm and registered a 23.8% increase compared to the same quarter of 2011, which due to the significant increase of the route's length of the metro lines – by 53.1%.

Figure 7. Transported passengers and transport performance by the urban electrical transport





Methodological notes

Land freight transport covers the freight carriages by road and rail transport from vehicles with Bulgarian registration as well as transmission of goods by pipelines.

Land passenger transport covers the passengers' carriages by road and rail transport from vehicles with Bulgarian registration.

Water transport covers the passengers' or freight carriages and transport performance by maritime and IWW vessels with Bulgarian registration.

Urban electrical transport includes passengers carried and transport performance of trolleybus transport in the country, tramway transport, and metro in Sofia.

Goods carried - (tons) is measured the total volume of goods carried **for hire or reward** between two places (place of loading and place of unloading).

Transport performance of freight transport (tonne-kilometres) - corresponds to the transportation of one ton over one kilometre.

Passengers carried (number) - measures the total number of passengers **with paid fares** carried by the corresponding type of transport between two places (place of embarkation and place of disembarkation).

Transport performance of passenger transport (passenger-kilometers) - corresponds to the transportation of one passenger over one kilometer.

Table 1

**Main indicators of the freight transport activity,
third quarter of 2011 and 2012**

Freight transport	III-rd quarter 2011	III-rd quarter 2012	Change in % compared to the third quarter of 2011
Land transport - transported goods			
Total - thousand tons	24314.8	27744.0	114.1
National	17403.7	20006.7	115.0
International	6911.1	7737.3	112.0
Land transport - transport performance			
Total - million tkm	6671.5	6976.1	104.6
National	1721.1	1708.7	99.3
International	4950.4	5267.4	106.4
Water transport - transported goods			
Total - thousand tons	1373.2	1395.1	101.6
National	9.7	16.6	171.1
International	1363.5	1378.5	101.1
Water transport - transport performance			
Total - million tkm	4483.4	3459.9	77.2
National	1.4	3.1	221.4
International	4482.0	3456.8	77.1



Table 2

**Main indicators of the passenger transport activity,
third quarter of 2011 and 2012**

Passenger transport	III-rd quarter 2011	III-rd quarter 2012	Change in % compared to the third quarter of 2011
Land transport - transported passengers			
Total - thousands	124409.2	124949.5	100.4
National	123756.1	124137.5	100.3
International	653.1	812.0	124.3
Land transport - transport performance			
Total - million pkm	3591.2	3375.5	94.0
National	2966.5	2750.4	92.7
International	624.7	625.1	100.1
Water transport - transported passengers			
Total - thousands	63.5	73.8	116.2
National	10.9	13.4	122.9
International	52.6	60.4	114.8
Water transport - transport performance			
Total - million pkm	0.64	1.07	167.2
National	0.19	0.41	215.8
International	0.45	0.66	146.7
Urban electrical transport - transported passengers			
Total - thousands	64268.0	63581.0	98.9
Urban electrical transport - transport performance			
Total - million pkm	296.0	366.5	123.8