



GOODS AND PASSENGERS CARRIED AND TRANSPORT PERFORMANCE BY MODE OF TRANSPORT IN THE FOURTH QUARTER OF 2011

According to the preliminary data of NSI in the fourth quarter of 2011 the goods carried by the land and water transport, based on seasonally adjusted data¹, declined by 10.8% than the previous quarter. The transport performance, which is a result of the actual distance on which the goods are transported, also registered a decrease by 4.5%.

The transported passengers by the land, water and urban electrical transport fell by 0.7% and of the transport performance by 1.7% compared to the previous quarter.

Fig.1 Goods carried and the transport performance by the freight transport (Seasonally adjusted data)

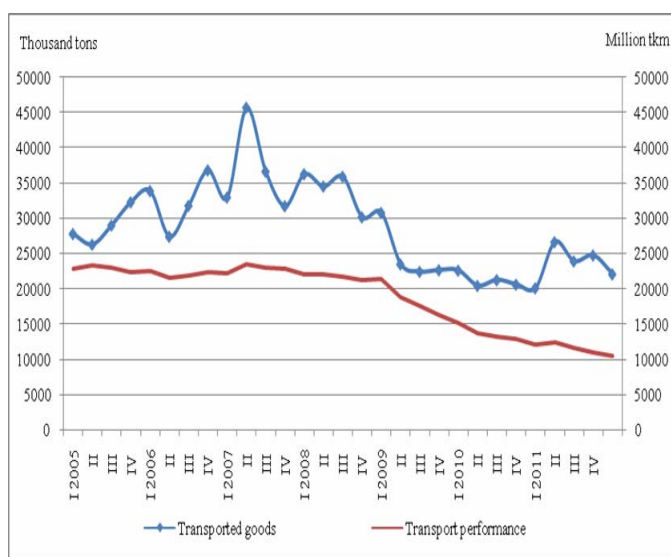
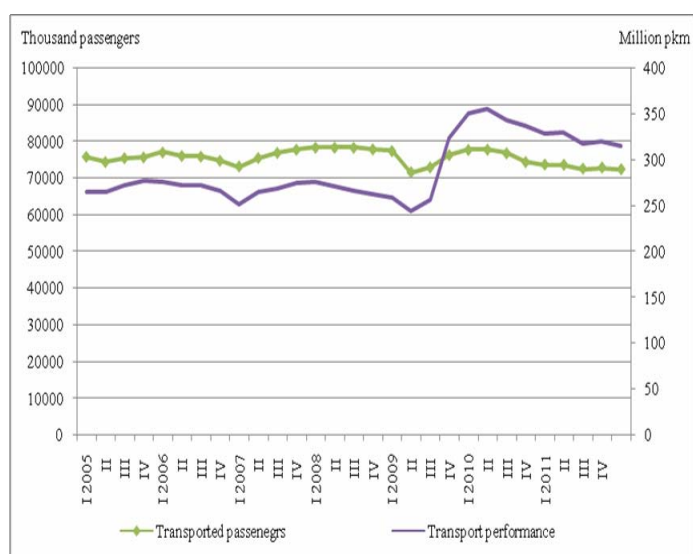


Fig.2 Transported passengers and transport performance by the passenger transport (Seasonally adjusted data)



¹ Seasonal adjustment is a statistical method, which eliminates the seasonal component of time series and it is particularly suitable for long-term comparison and analysis of the data.

Figure 3. Indices of the goods carried (2005=100)

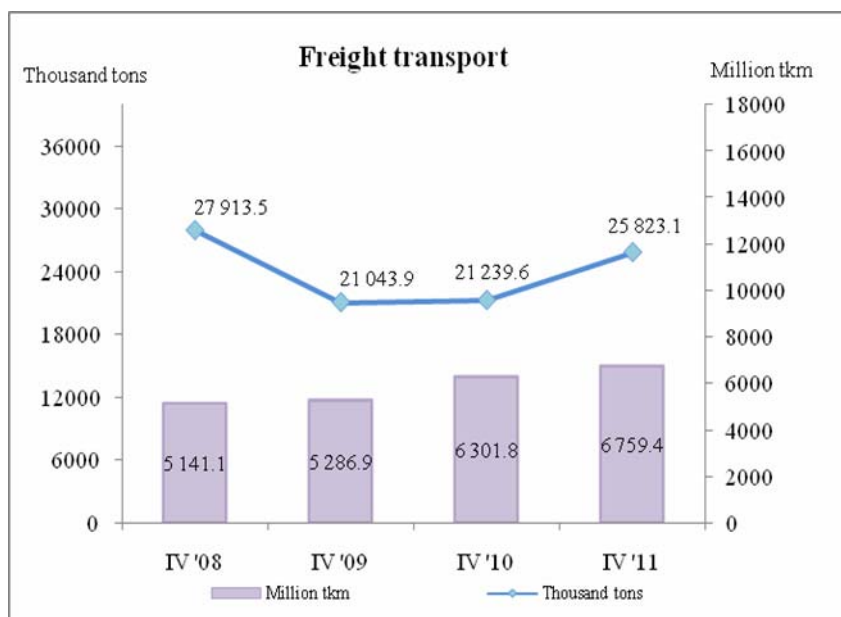


Land transport

By preliminary data in the fourth quarter of 2011 the **transported goods** by land transport increased by 4583.5 thousand tonnes compared to the corresponding quarter of 2010. Both in the national and in the international carriages a growth by 24.0 and 16.1%, respectively was observed.

At the same time the **transport performance** rose by 457.6 million tkm, or by 7.3%. The growth in the national carriages was by 18.1% and in the international carriages by 3.4%.

Figure 4. Transported goods and transport performance by the land transport

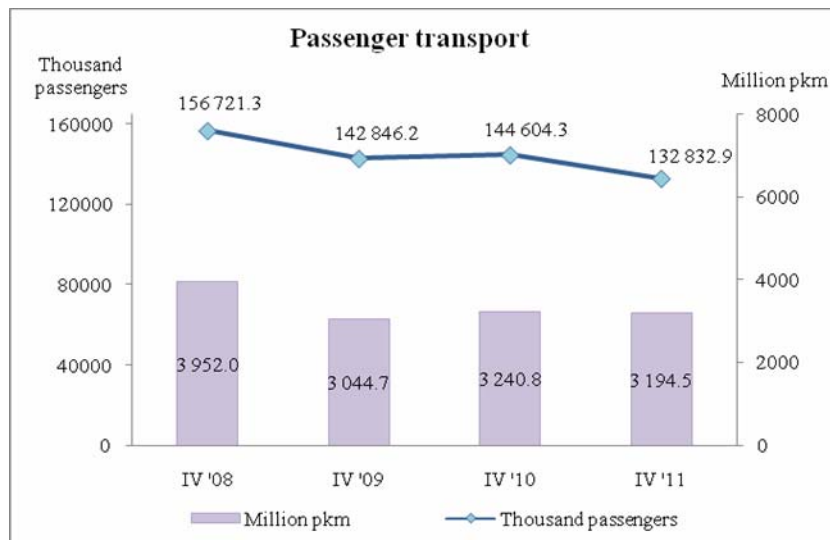




During the fourth quarter of 2011 the **transported passengers** from the railway and bus transport were 132 832.9 thousand or by 8.1% less than the corresponding period of the previous year. The decline of the transported passengers by the railway transport was by 12.7% and by the bus transport by 7.9%, which is due to the national as well as to the international carriages.

At the same time the **transport performance** was 3 194.4 million pkm or by 1.4% less compared to the same period of the previous year. The decline was mainly due to the railway transport, where the decrease in the fourth quarter of 2011 was by 13.1% in comparison with the same quarter of 2010.

Figure 5. Transported passengers and transport performance by the land transport



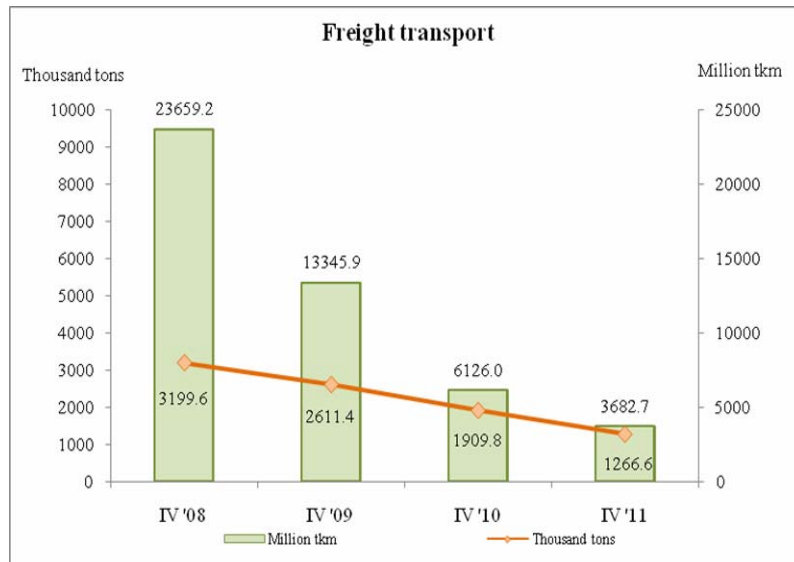
Water transport

The **goods transported** by the water transport in the fourth quarter of 2011 were by 33.7% less compared to the same quarter of 2010, due to the less volume of the goods carried by the maritime and inland waterway transport. By the maritime transport, which in the reference quarter has performed only international carriages, the decline was by 43.2% and by inland waterway transport the decline was by 21.0%.

The **transport performance** measured in tonne-kilometers also registered a drop by 39.9% compared to the fourth quarter of 2010. By the maritime transport the decline was by 39.3% and by the inland waterway transport – by 46.3% and is due not only to the volume of the transported goods but also to the less average distance travelled.



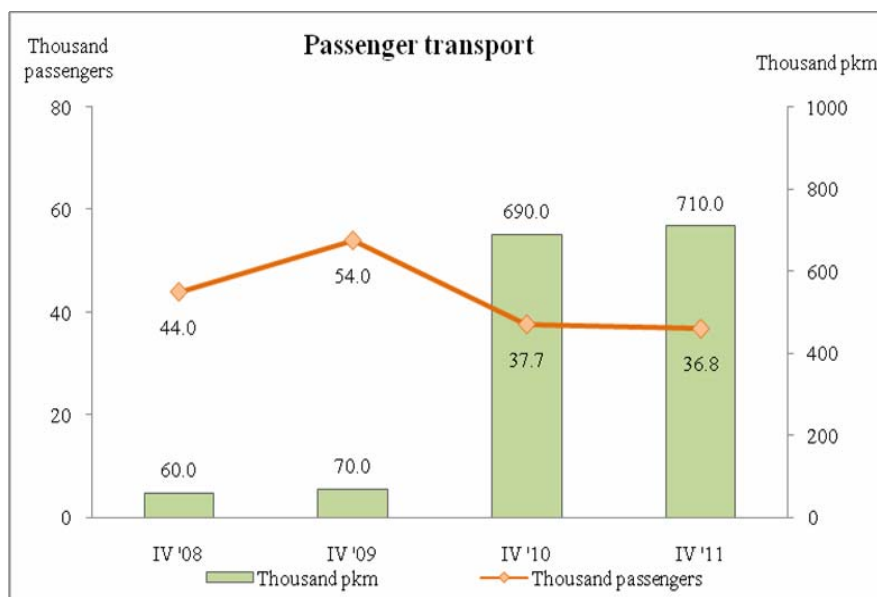
Figure 6. Transported goods and transport performance by the water transport



The number of the **transported passengers** by the water transport during the fourth quarter of 2011 decreased by 2.3% compared to same period of the previous year, which was mainly due to the maritime transport.

The **transport performance** rose by 20 thousand pkkm or by 2.9% in comparison with the corresponding period of 2010, due to the increased average distance travelled by the maritime transport.

Figure 7. Transported passengers and transport performance by the water transport



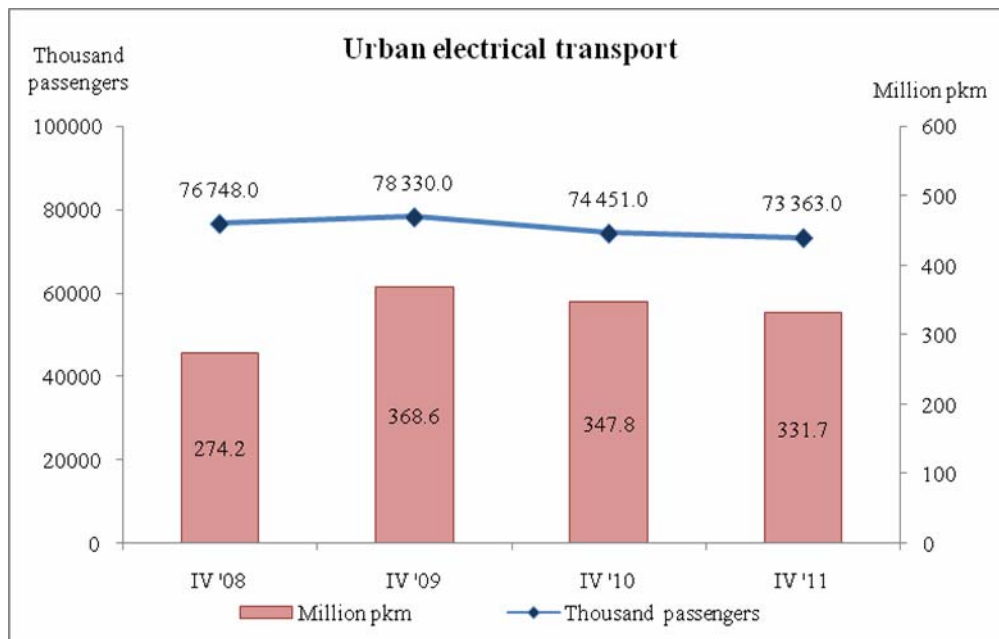


Urban electrical transport

In the fourth quarter of 2011 the **passengers transported** by the urban electrical transport were 73 363 thousand. In comparison with the corresponding quarter of 2010 the transported passengers fell by 1.5%. The decline is due to the metro carriages which dropped by 10.2% while the trolleybus and tramway transport registered growth by 2.2 and 0.1%, respectively.

The **transport performance** measured in passenger-kilometers also registered a drop by 4.6% compared to the corresponding period of 2010. Only in the trolleybus transport an increase by 1.9% was observed.

Figure 8. Transported passengers and transport performance by the urban electrical transport





Methodological notes

Land freight transport covers the freight carriages by road and rail transport from vehicles with Bulgarian registration as well as transmission of goods by pipelines.

Land passenger transport covers the passengers' carriages by road and rail transport from vehicles with Bulgarian registration.

Water transport covers the passengers' or freight carriages and transport performance by maritime and IWW vessels with Bulgarian registration.

Urban electrical transport includes passengers carried and transport performance of trolleybus transport in the country, tramway transport, and metro in Sofia.

Goods carried - (tons) is measured the total volume of goods carried **for hire or reward** between two places (place of loading and place of unloading).

Transport performance of freight transport (tonne-kilometres) - corresponds to the transportation of one ton over one kilometre.

Passengers carried (number) - measures the total number of passengers **with paid fares** carried by the corresponding type of transport between two places (place of embarkation and place of disembarkation).

Transport performance of passenger transport (passenger-kilometers) - corresponds to the transportation of one passenger over one kilometer.



Table 1

Main indicators of the freight transport activity, fourth quarter of 2010 and 2011

Freight transport	IV-th quarter 2010	IV-th quarter 2011	Change in % compared to the fourth quarter of 2010
Land transport - transported goods			
Total - thousand tons	21239.6	25823.1	121.6
National	14739.6	18277.2	124.0
International	6500.0	7545.9	116.1
Land transport - transport performance			
Total - million tkm	6301.8	6759.4	107.3
National	1661.0	1961.3	118.1
International	4640.8	4798.1	103.4
Water transport - transported goods			
Total - thousand tons	1909.8	1266.6	66.3
National	22.6	9.5	42.0
International	1887.2	1257.1	66.6
Water transport - transport performance			
Total - million tkm	6126.0	3682.7	60.1
National	4.3	1.4	32.6
International	6121.7	3681.3	60.1



Table 2

Main indicators of the passenger transport activity, fourth quarter of 2010 and 2011

Passenger transport	IV-th quarter 2010	IV-th quarter 2011	Change in % compared to the fourth quarter of 2010
Land transport - transported passengers			
Total - thousands	144604.3	132832.9	91.9
National	144148.9	132411.7	91.9
International	455.4	421.2	92.5
Land transport - transport performance			
Total - million pkm	3240.8	3194.4	98.6
National	2855.0	2733.0	95.7
International	385.8	461.4	119.6
Water transport - transported passengers			
Total - thousands	37.7	36.8	97.6
National	1.0	0.0	0.0
International	36.7	36.8	100.3
Water transport - transport performance			
Total - million pkm	0.69	0.71	102.90
National	0.10	0.00	0.00
International	0.59	0.71	120.34
Urban electrical transport - transported passengers			
Total - thousands	74451.0	73363.0	98.5
Urban electrical transport - transport performance			
Total - million pkm	347.8	331.7	95.4