



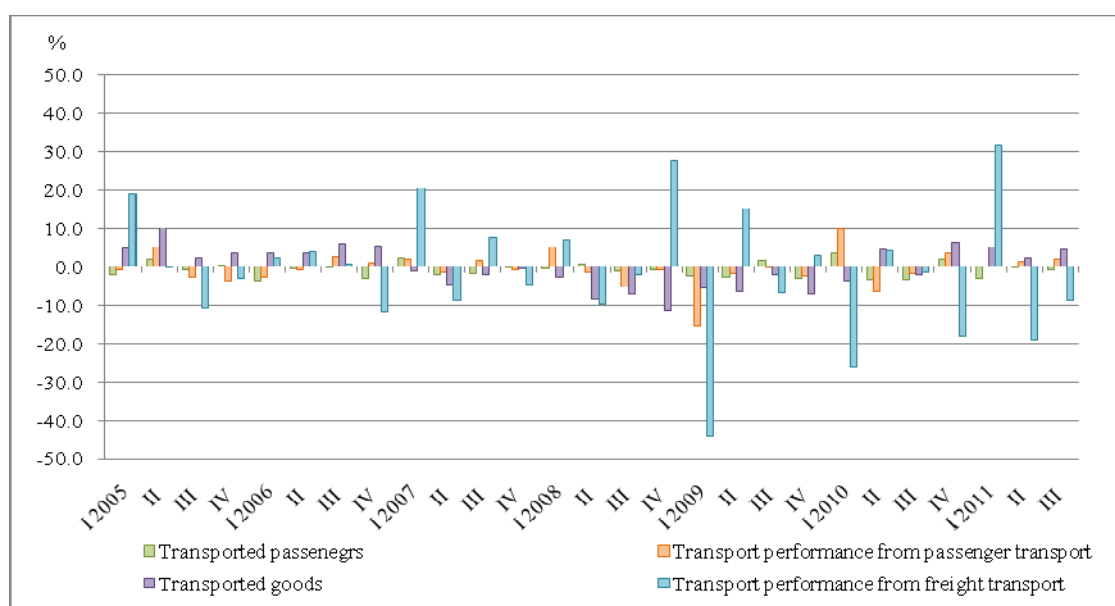
GOODS AND PASSENGERS CARRIED AND TRANSPORT PERFORMANCE BY MODE OF TRANSPORT IN THE THIRD QUARTER OF 2011

Indices of the freight and passenger transport

According to the preliminary data of NSI in the third quarter of 2011 the total index of the goods carried by the land and water transport, calculated on basis of seasonally adjusted data¹, was by 4.6% more than the previous quarter. At the same time the index of the transport performance which was a result of the actual distance on which the goods are transported dropped by 8.5%.

The total index of the transported passengers by the land, water and urban electrical transport declined by 0.9% compared to the previous quarter, while of the transports performance rose by 2.0%.

Figure 1. Change of the indices in passenger and freight transport compared to the previous quarter (Seasonally adjusted)



¹ Seasonal adjustment is a statistical method, which eliminates the seasonal component of time series and it is particularly suitable for long-term comparison and analysis of the data.



Figure 2. Indices of the transported passengers by the passenger transport (2005 = 100)

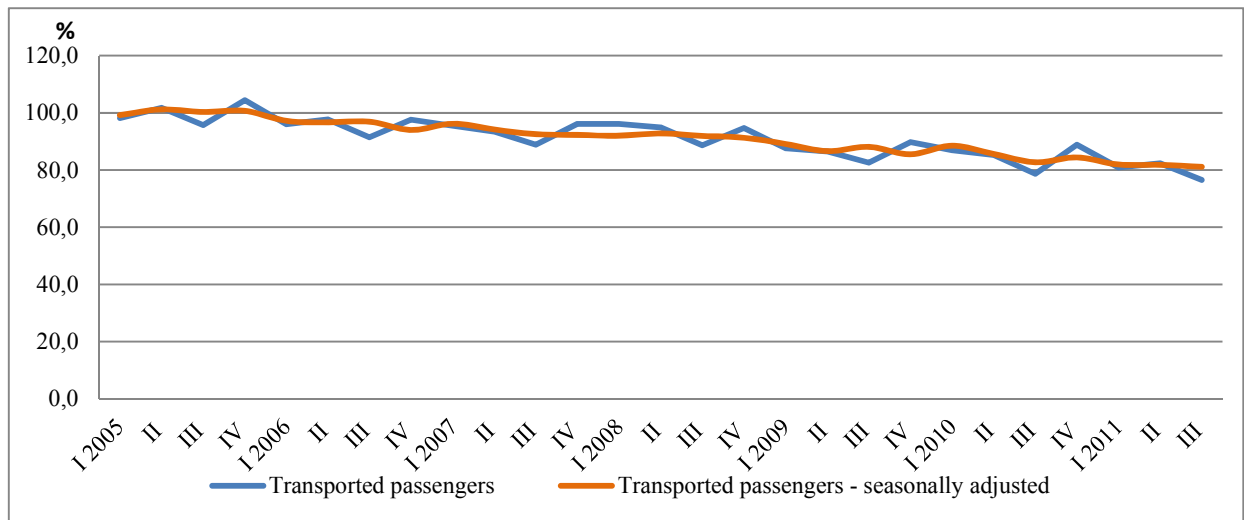


Figure 3. Indices of the goods carried by the freight transport (2005 = 100)



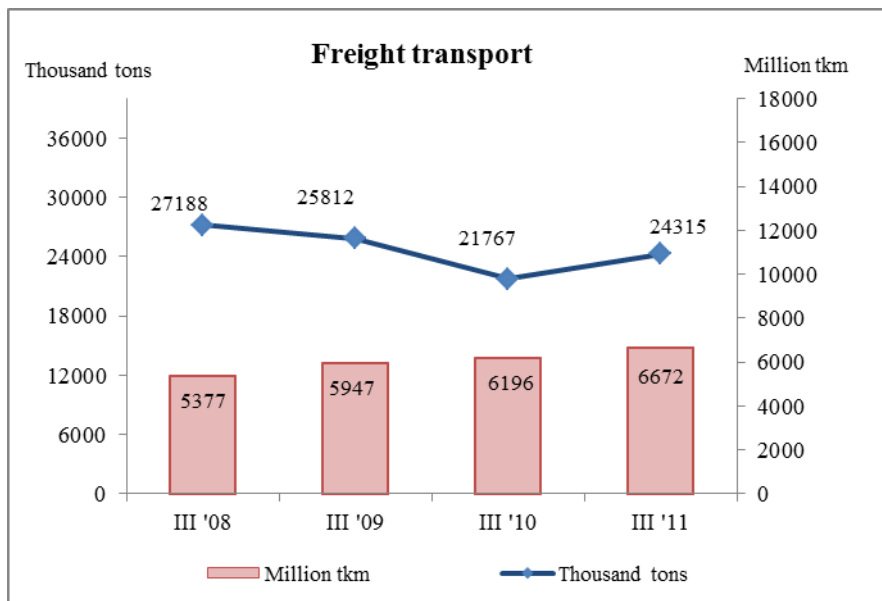
Land transport

By preliminary data in the third quarter of 2011 the **transported goods** by land transport increased by 11.7% compared to the corresponding quarter of 2010. Both in the national and in the international carriages an increase was observed - by 9.6 and 17.5% respectively, which was mainly due the pipeline transport.



At the same time the **transport performance** in the third quarter of 2011 reached 6 671.6 million tkm, which was by 7.7% more compared to the same period of the previous year. The growth was mainly due the national carriages, which rose by 10.9%.

Figure 4. Transported goods and transport performance by the land transport

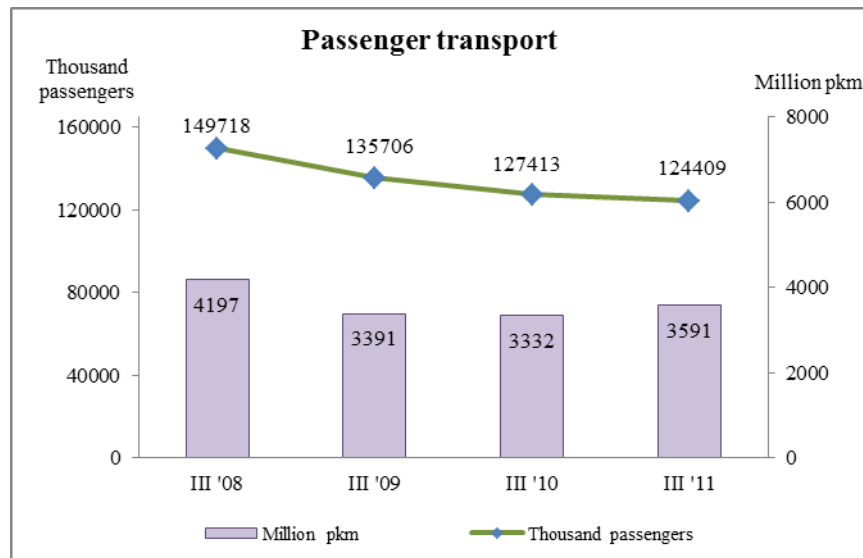


During the third quarter of 2011 the **transported passengers** were 124 409.2 thousand or by 2.4% less than the corresponding quarter of 2010. The international carriages registered an increase by 14.5%, but due to their low share (0.5% from the total number of the transported passengers) this did not influence the total trend. The transported passengers by the bus transport decreased by 3 154.5 thousand, while the passengers transported by the railway transport rose by 2.0%.

The **transport performance** reached 3 591.2 million pkm and registered an increase by 7.8% compared to the same period of the previous year. The growth was due to the international carriages and was a result from the increased average distance travelled of the bus transport.



Figure 5. Transported passengers and transport performance by the land transport



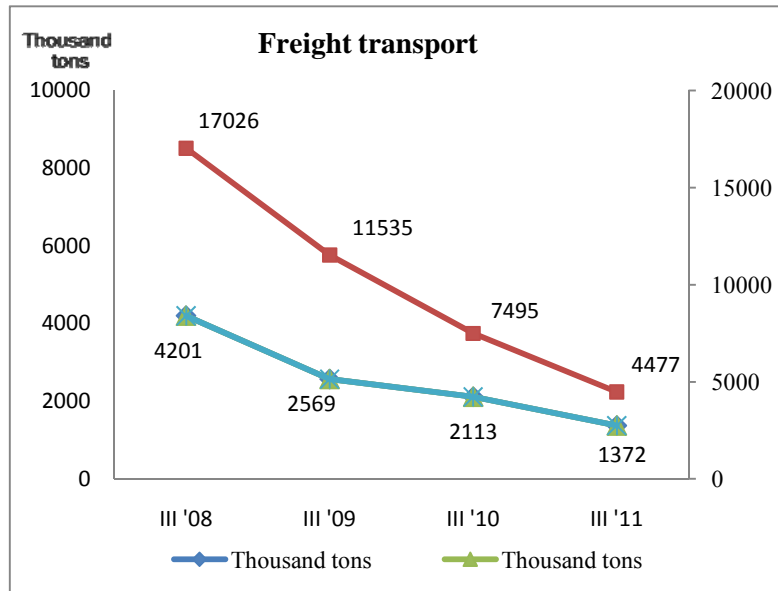
Water transport

The **goods transported** by the water transport in the third quarter of 2011 were by 35.1% less compared to the same quarter of 2010, due to the less volume of the goods carried by the maritime transport. By the inland waterway transport a decline by 9.0% was also observed in comparison with the volume of the transported goods in the corresponding period of the previous year.

The **transport performance** was 4 477.2 million tkm and compared to the third quarter of 2010 a decline by 40.3% was registered which was 40.7% by the maritime transport and 33.7% by the inland waterway transport.



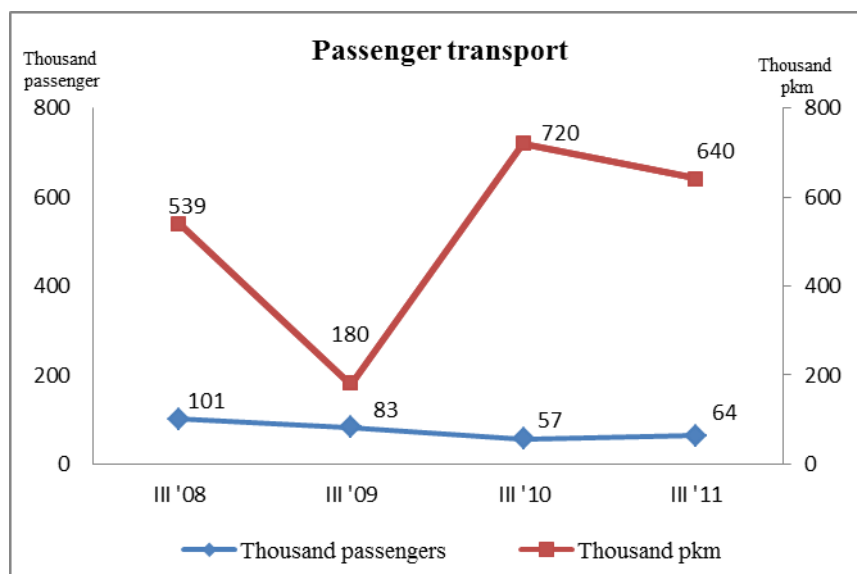
Figure 6. Transported goods and transport performance by the water transport



The number of the **transported passengers** by the water transport during the third quarter of 2011 increased by 10.8% compared to same period of the previous year, which was mainly due to the inland waterway transport.

At the same time the **transport performance** measured in passenger-kilometers was by 80 thousand pkm or by 11.1% less in comparison with the corresponding period of 2011, due to the decreased average distance travelled.

Figure 7. Transported passengers and transport performance by the water transport



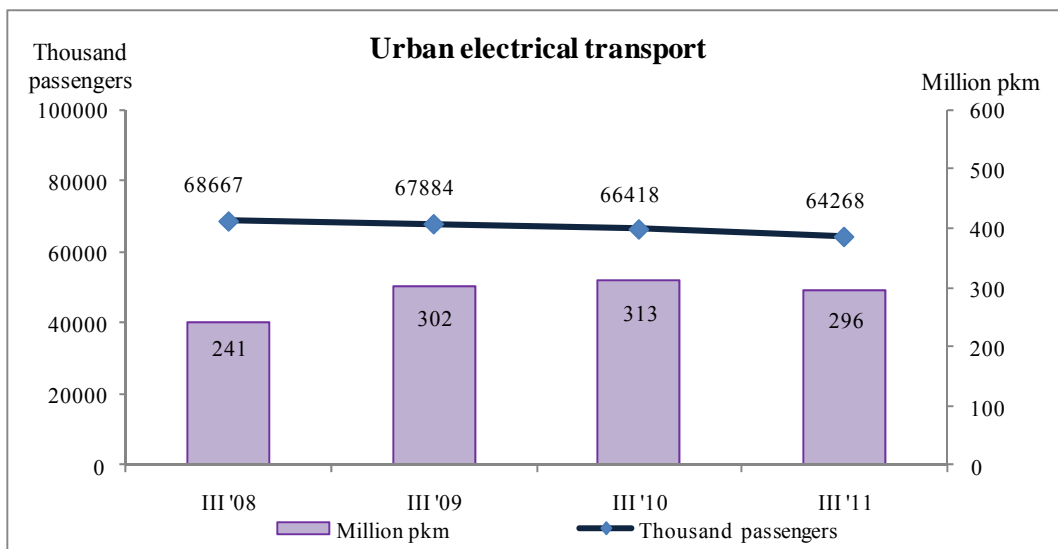


Urban electrical transport

In the third quarter of 2011 the **passengers transported** by the urban electrical transport were 64 268 thousand. In comparison with the corresponding quarter of 2010 the transported passengers fell by 3.2%. The highest decline was registered in the trolleybus transport with 1 157 thousand passengers or by 4.7%.

The **transport performance** also registered a drop (by 5.3%) compared to the corresponding period of 2010, which was mainly due to the less transported passengers by the trolleybus transport where the decrease was by 7.4%.

Figure 8. Transported passengers and transport performance by the urban electrical transport





Methodological notes

Land freight transport covers the freight carriages by road and rail transport from vehicles with Bulgarian registration as well as transmission of goods by pipelines.

Land passenger transport covers the passengers' carriages by road and rail transport from vehicles with Bulgarian registration.

Water transport covers the passengers' or freight carriages and transport performance by maritime and IWW vessels with Bulgarian registration.

Urban electrical transport includes passengers carried and transport performance of trolleybus transport in the country, tramway transport, and metro in Sofia.

Goods carried - (tons) is measured the total volume of goods carried **for hire or reward** between two places (place of loading and place of unloading).

Transport performance of freight transport (tonne-kilometres) - corresponds to the transportation of one ton over one kilometre.

Passengers carried (number) - measures the total number of passengers **with paid fares** carried by the corresponding type of transport between two places (place of embarkation and place of disembarkation).

Transport performance of passenger transport (passenger-kilometres) - corresponds to the transportation of one passenger over one kilometre.

ANNEX

Table 1

Main indicators of the freight transport activity, third quarter of 2010 and 2011

Freight transport	III-rd quarter 2010	III-rd quarter 2011	Change in % compared to the third quarter of 2010
Land transport - transported goods			
Total - thousand tons	21766.8	24314.8	111.7
National	15884.5	17403.7	109.6
International	5882.3	6911.1	117.5
Land transport - transport performance			
Total - million tkm	6169.3	6671.6	108.1
National	1551.4	1721.1	110.9
International	4644.9	4950.5	106.6
Water transport - transported goods			
Total - thousand tons	2113.0	1371.7	64.9
National	24.6	9.7	39.4
International	2088.4	1362.0	65.2
Water transport - transport performance			
Total - million tkm	7495.0	4477.2	59.7
National	2.4	1.4	58.3
International	7492.6	4475.8	59.7



Table 2

Main indicators of the passenger transport activity, third quarter of 2010 and 2011

Passenger transport	III-rd quarter 2010	III-rd quarter 2011	Change in % compared to the third quarter of 2010
Land transport - transported passengers			
Total - thousands	127413.2	124409.2	97.6
National	126842.8	123756.1	97.6
International	570.4	653.1	114.5
Land transport - transport performance			
Total - million pkm	3332.0	3591.2	107.8
National	2895.4	2966.5	102.5
International	436.6	624.7	143.1
Water transport - transported passengers			
Total - thousands	57.3	63.5	110.8
National	11.9	11.0	92.0
International	45.4	52.6	115.8
Water transport - transport performance			
Total - million pkm	0.72	0.67	93.06
National	0.29	0.19	65.52
International	0.46	0.48	104.35
Urban electrical transport - transported passengers			
Total - thousands	66418.0	64268.0	96.8
Urban electrical transport - transport performance			
Total - million pkm	312.5	295.9	94.7