

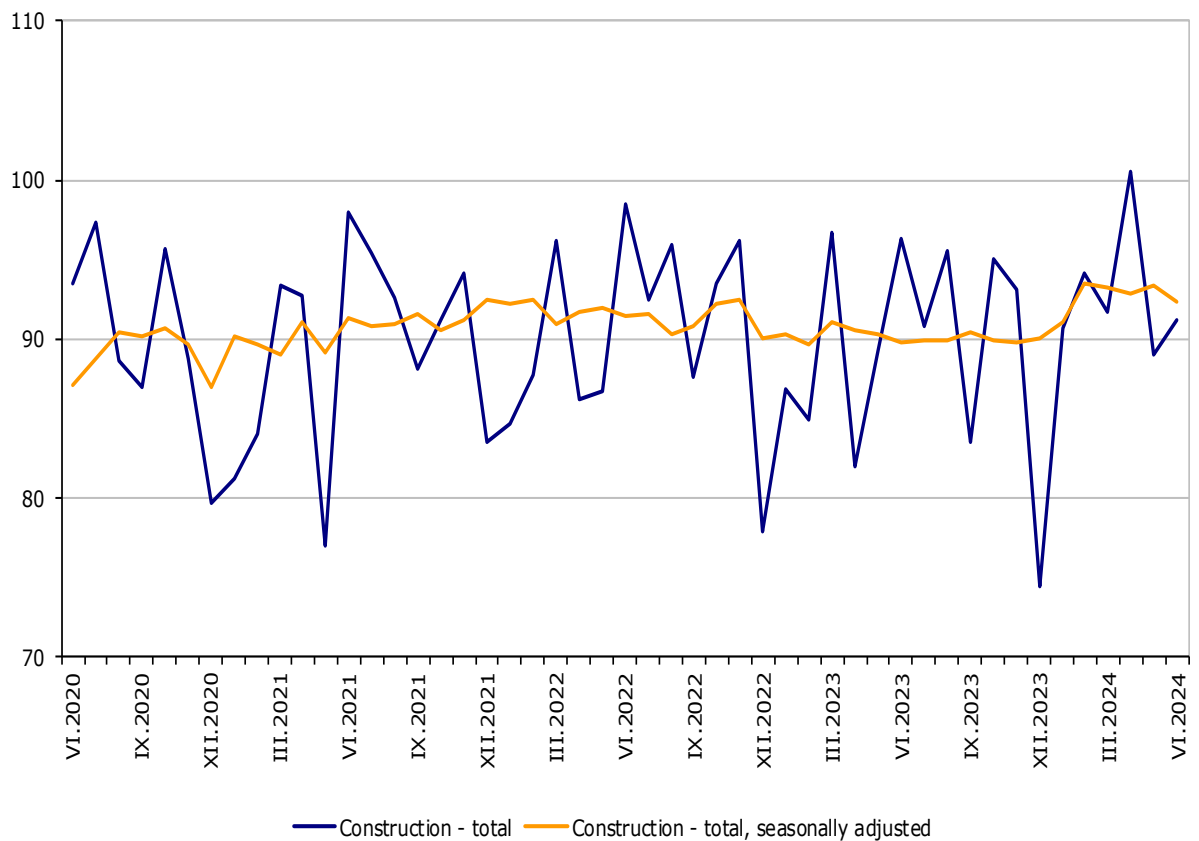


CONSTRUCTION PRODUCTION INDICES IN JUNE 2024

In June 2024, the production index in the 'Construction' section decreased by 1.1% compared to the previous month (Table 1). The data are preliminary and seasonally adjusted.

The calendar-adjusted data showed a rise of 2.9% in the construction production compared to the same month of 2023 (Table 2).

Figure 1. Construction Production Indices (2015 = 100)

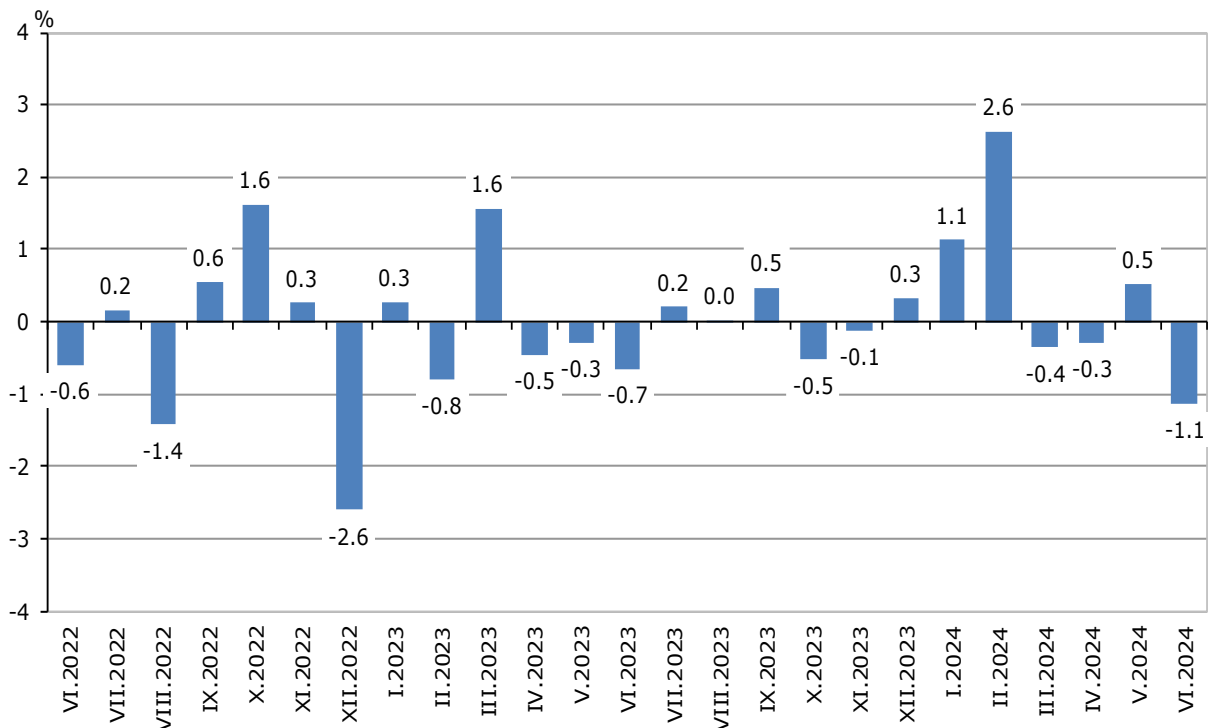


CONSTRUCTION PRODUCTION INDICES IN JUNE 2024

Monthly changes

In June 2024, compared to the previous month, a decrease was reported in the specialized construction activities - by 3.4%, and in the production of building construction - by 0.6%. An increase was observed in the production of civil engineering - by 1.1% (Table 1).

**Figure 2. Changes of the Construction Production Indices compared to the previous month
(Seasonally adjusted, 2015 = 100)**

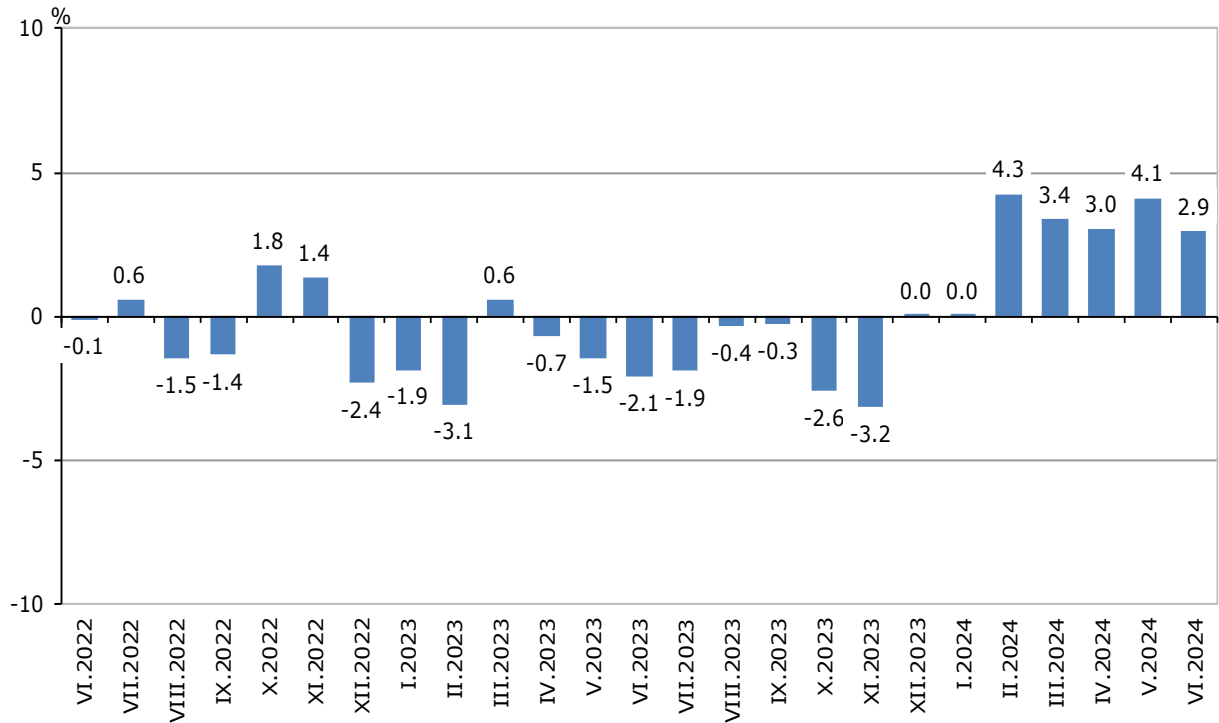


Annual changes

In June 2024, compared to the same month of 2023, a rise of production was registered in the civil engineering - by 6.1%, and in the specialized construction activities - by 5.4%. In the production of building construction, a decrease of 1.1% was seen (Table 2).

CONSTRUCTION PRODUCTION INDICES IN JUNE 2024

Figure 3. Changes of the Construction Production Indices compared to the same month of the previous year (Calendar-adjusted, 2015 = 100)



Methodological notes

The monthly indices show the short-term changes in construction production between two comparable periods. This information can be used to analyse the current state of construction activity in the country, as well as a short-term forecast for its future development.

The indices are calculated on the basis of information on hours worked in construction. The data are collected with a monthly sample survey that includes construction enterprises, whose production exceeds 75% of the total production in construction. Construction Production Indices are calculated on the base 2015 = 100. From 2024 the data is provided according to the requirements of Regulation (EU) 2019/2152 and Regulation (EU) 2020/1197.

Seasonal adjustment is a statistical method that eliminates the seasonal component of time series.

Calendar adjustment is an adjustment for variations in monthly data, caused by calendar effects, the different number of calendar and working days in the months, national holidays and outliers (for example, the presence of more non-working days in May could contribute to the decline in the production in some activities).

CONSTRUCTION PRODUCTION INDICES IN JUNE 2024

Annex

Table 1

Changes of the Construction Production Indices compared to the previous month¹

(Per cent)

Indicators	2024					
	I	II	III	IV	V	VI
Construction - total	1.1	2.6	-0.4	-0.3	0.5	-1.1
Construction of buildings	-2.1	2.6	0.2	-0.9	-0.6	-0.6
Civil engineering	2.2	2.9	-2.0	-0.2	-0.1	1.1
Specialized construction activities	4.3	2.4	0.3	0.3	2.2	-3.4

¹ Seasonally adjusted.

Table 2

Changes of the Construction Production Indices compared to the same month of the previous year¹

(Per cent)

Indicators	2024					
	I	II	III	IV	V	VI
Construction - total	0.0	4.3	3.4	3.0	4.1	2.9
Construction of buildings	-3.5	0.2	-1.2	-0.5	-0.3	-1.1
Civil engineering	4.2	8.7	5.1	3.5	2.7	6.1
Specialized construction activities	1.3	6.0	7.8	7.2	10.7	5.4

¹ Calendar-adjusted.

CONSTRUCTION PRODUCTION INDICES IN JUNE 2024

Table 3

Construction Production Indices (Seasonally adjusted, 2015 = 100)

Indicators	2023							2024					
	VI	VII	VIII	IX	X	XI	XII	I	II	III	IV	V	VI
Construction - total	89.8	90.0	90.0	90.4	89.9	89.8	90.1	91.1	93.5	93.2	92.9	93.4	92.3
Construction of buildings	94.4	94.7	95.3	94.9	94.1	93.9	94.6	92.7	95.1	95.3	94.4	93.9	93.3
Civil engineering	63.1	63.4	63.6	63.9	63.9	63.7	63.8	65.2	67.1	65.7	65.6	65.6	66.3
Specialized construction activities	122.3	122.0	120.9	122.8	122.0	122.3	122.1	127.3	130.4	130.8	131.2	134.1	129.6

Table 4

Construction Production Indices (Calendar-adjusted, 2015=100)

Indicators	2023							2024					
	VI	VII	VIII	IX	X	XI	XII	I	II	III	IV	V	VI
Construction - total	94.1	95.3	92.1	87.3	95.6	90.8	81.6	88.5	89.8	97.5	91.5	91.4	96.9
Construction of buildings	98.7	99.7	97.1	91.1	98.5	92.7	86.1	91.2	92.2	99.8	93.6	92.5	97.7
Civil engineering	66.2	67.9	66.1	62.2	69.1	65.9	57.4	61.4	63.1	69.2	64.3	63.5	70.2
Specialized construction activities	128.3	129.2	123.1	118.9	130.4	124.8	110.7	124.4	125.6	136.2	128.4	131.0	135.2