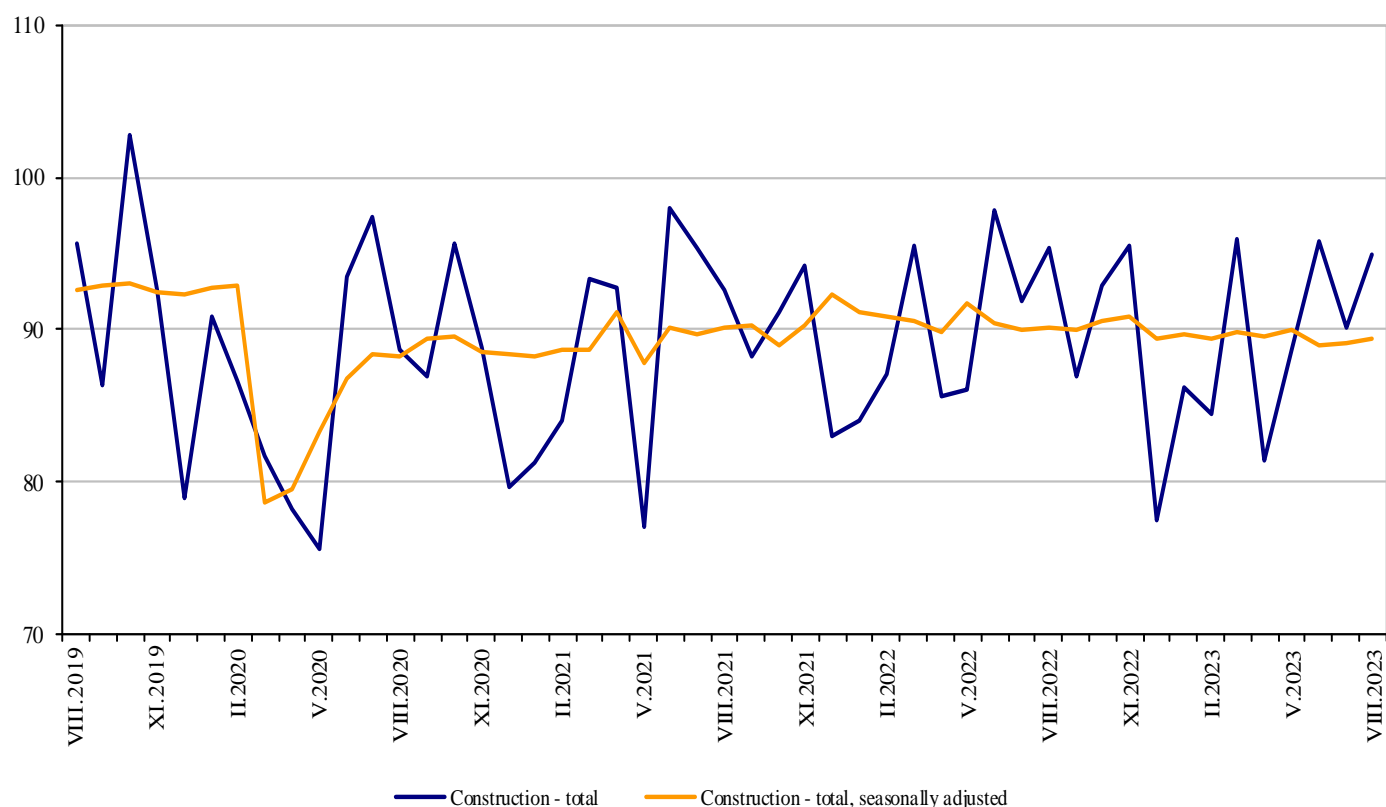


## CONSTRUCTION PRODUCTION INDICES IN AUGUST 2023<sup>1,2</sup>

In August 2023, the index of production in the 'Construction' section increased by 0.3% compared to the previous month (Table 1). The data are preliminary and seasonally adjusted<sup>3</sup>.

The calendar-adjusted data<sup>4</sup> showed a decrease of 0.5% in construction production compared to the same month of 2022 (Table 3).

**Figure 1. Construction Production Indices (2015 = 100)**



<sup>1</sup> Data for August 2023 are preliminary.

<sup>2</sup> The monthly indices show the short-term changes in construction production between two comparable periods. This information can be used to analyse the current state of construction activity in the country, as well as a short-term forecast for its future development. The indices are calculated on the basis of information on hours worked in construction. The data are collected with a monthly sample survey that includes construction enterprises, which production exceeds 75% of the total production in construction. Construction Production Indices are calculated on the base 2015 = 100.

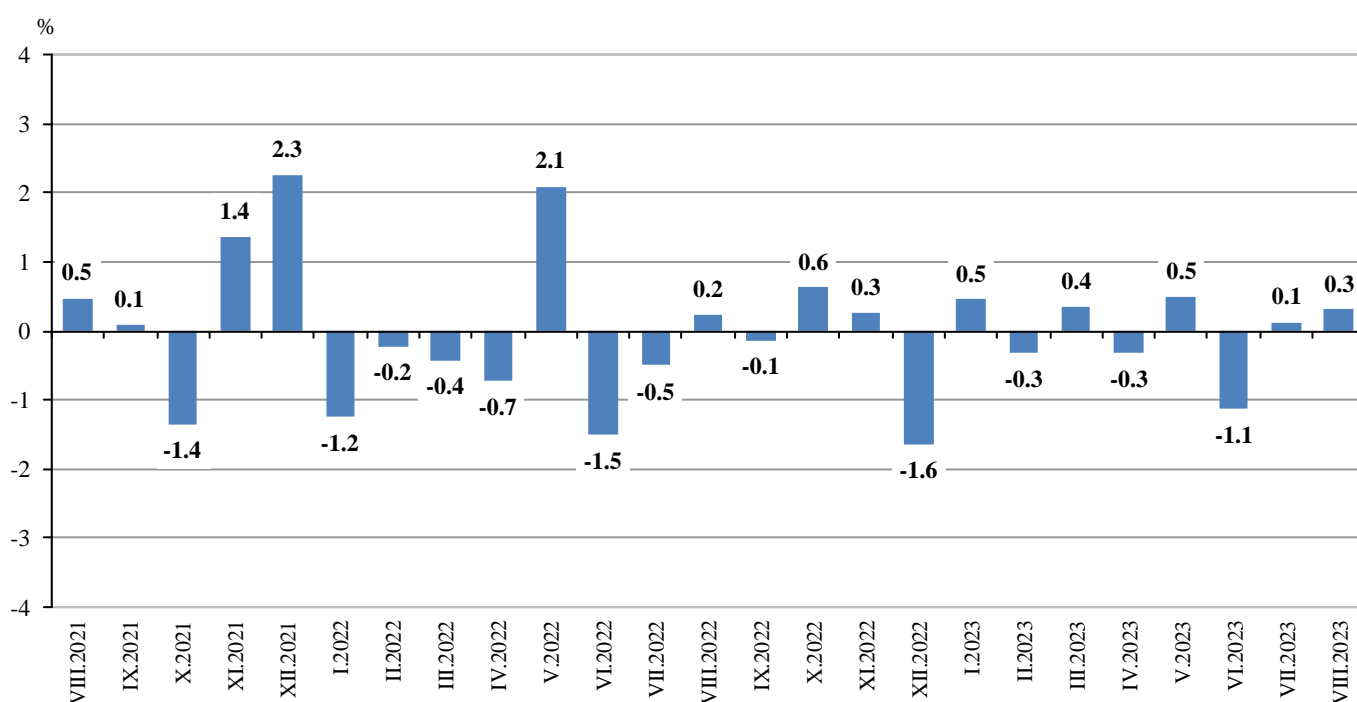
<sup>3</sup> Seasonal adjustment is a statistical method that eliminates the seasonal component of time series.

<sup>4</sup> Calendar-adjustment is an adjustment for variations in monthly data, caused by calendar effects, the different number of calendar and working days in the months, national holidays and outliers (for example, the presence of more non-working days in May could contribute to the decline in the production in some activities).

## Monthly changes

In August 2023, the Construction Production Index, calculated from the seasonally adjusted data, was above the previous month's level. The production index of building construction rose by 0.5% and the production of civil engineering remained unchanged (Table 1).

**Figure 2. Changes of the Construction Production Indices compared to the previous month**  
(Seasonally adjusted, 2015 = 100)



### 1. Changes of the Construction Production Indices compared to the previous month<sup>1</sup>

	2022					2023								(Per cent)
	VIII	IX	X	XI	XII	I	II	III	IV	V	VI	VII	VIII	
Construction - total	0.2	-0.1	0.6	0.3	-1.6	0.5	-0.3	0.4	-0.3	0.5	-1.1	0.1	0.3	
Building construction	0.1	-0.3	0.6	-0.1	-0.4	0.7	-0.1	0.4	0.0	0.2	-0.9	0.4	0.5	
Civil engineering	0.4	0.1	0.7	0.8	-3.3	0.2	-0.6	0.3	-0.8	0.9	-1.4	-0.3	0.0	

<sup>1</sup> Seasonally adjusted.

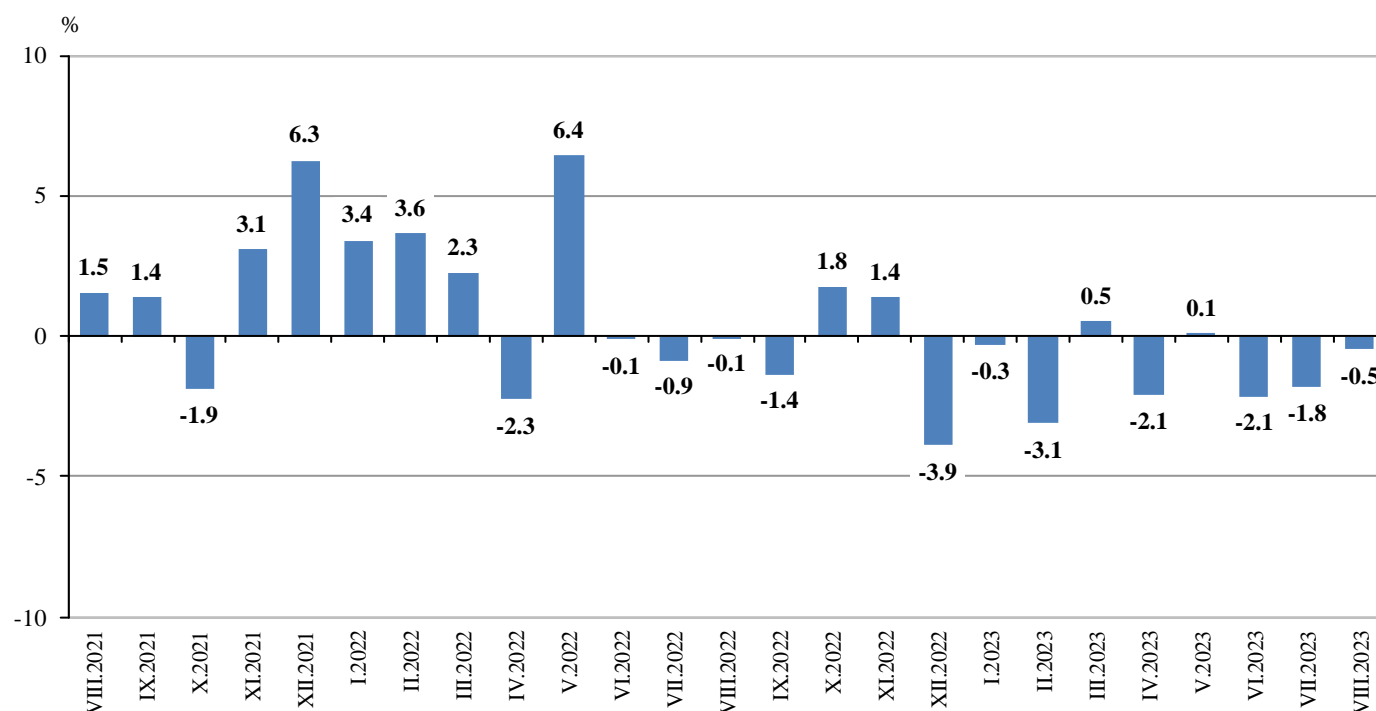
## 2. Construction Production Indices (Seasonally adjusted, 2015 = 100)

	2022					2023							
	VIII	IX	X	XI	XII	I	II	III	IV	V	VI	VII	VIII
Construction - total	90.2	90.0	90.6	90.9	89.4	89.8	89.5	89.8	89.5	90.0	88.9	89.1	89.3
Building construction	97.3	97.1	97.6	97.5	97.2	97.8	97.7	98.1	98.2	98.4	97.5	97.9	98.4
Civil engineering	82.2	82.2	82.8	83.4	80.6	80.8	80.3	80.5	79.9	80.6	79.4	79.2	79.2

### Annual changes

On an annual basis in August 2023, the decrease of production in construction, calculated from calendar-adjusted data, was determined by the negative rate in civil engineering, where the drop was 3.6%, while in building construction an increase by 1.9% was observed (Table 3).

**Figure 3. Changes of the Construction Production Indices compared to the same month of the previous year  
(Calendar-adjusted, 2015 = 100)**



### 3. Changes of the Construction Production Indices compared to the same month of the previous year<sup>1</sup>

(Per cent)

	2020	2021	2022					2023							
	VIII	VIII	VIII	IX	X	XI	XII	I	II	III	IV	V	VI	VII	VIII
<b>Construction - total</b>	-4.6	1.5	-0.1	-1.4	1.8	1.4	-3.9	-0.3	-3.1	0.5	-2.1	0.1	-2.1	-1.8	-0.5
Building construction	-8.3	-0.7	1.5	-1.6	1.7	0.2	-2.4	2.4	-2.1	2.6	-0.2	2.0	-0.5	-0.2	1.9
Civil engineering	0.8	4.4	-2.0	-1.1	1.8	2.8	-5.9	-4.0	-4.5	-2.3	-4.6	-2.5	-4.2	-3.9	-3.6

<sup>1</sup> Calendar-adjusted.

### 4. Construction Production Indices (Calendar-adjusted, 2015 = 100)

	2020	2021	2022					2023							
	VIII	VIII	VIII	IX	X	XI	XII	I	II	III	IV	V	VI	VII	VIII
<b>Construction - total</b>	91.6	93.0	93.0	87.0	95.9	93.9	79.7	87.3	84.4	94.4	85.8	87.7	94.2	93.2	92.5
Building construction	98.0	97.3	98.8	93.0	102.1	98.8	87.6	98.0	93.8	105.0	94.4	96.6	102.9	101.7	100.7
Civil engineering	84.6	88.3	86.5	80.3	89.1	88.6	70.9	75.4	74.0	82.7	76.3	77.8	84.4	83.7	83.4