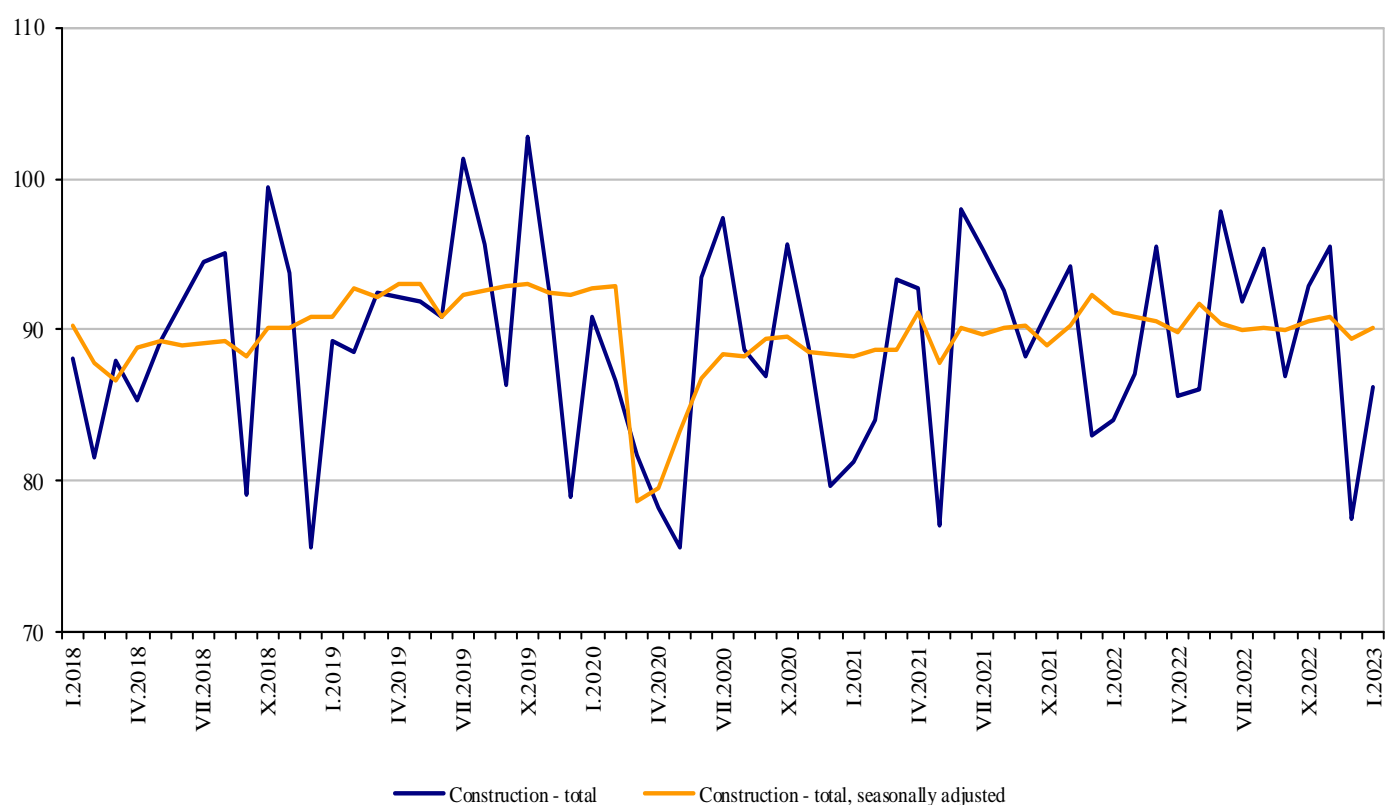


CONSTRUCTION PRODUCTION INDICES IN JANUARY 2023^{1,2}

In January 2023, the production index in the ‘Construction’ section was 0.8% above the previous month’s level (Table 1). The data are preliminary and seasonally adjusted³.

The calendar adjusted data⁴ showed a decrease of 0.4% in construction production compared to the same month of 2022 (Table 3).

Figure 1. Construction Production Indices (2015 = 100)



¹ Data for January 2023 are preliminary.

² The monthly indices show the short-term changes in construction production between two comparable periods. This information can be used to analyse the current state of construction activity in the country, as well as a short-term forecast for its future development. The indices are calculated on the basis of information on hours worked in construction. The data are collected with a monthly sample survey that includes construction enterprises, which production exceeds 75% of the total production in construction. Construction Production Indices are calculated on the base 2015 = 100. Data for 2022 are reconciled.

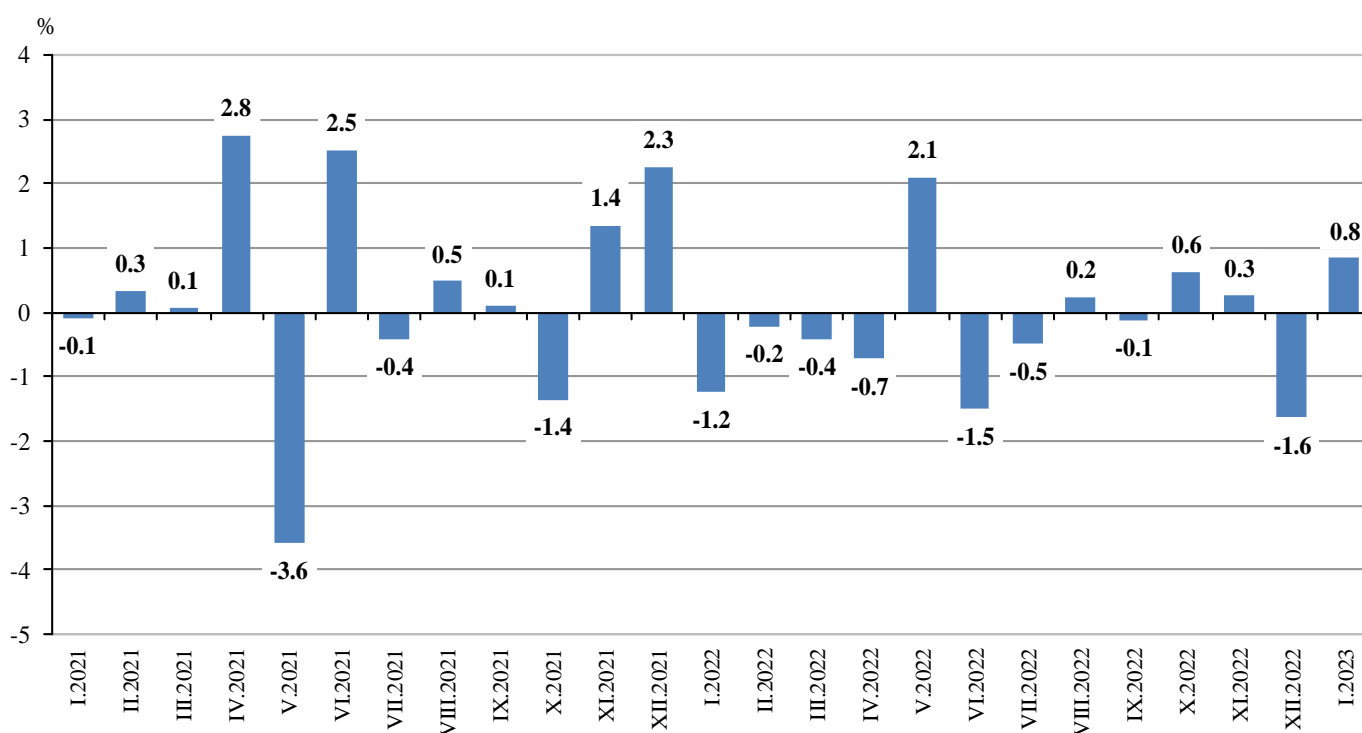
³ Seasonal adjustment is a statistical method that eliminates the seasonal component of time series.

⁴ Calendar adjustment is an adjustment for variations in monthly data, caused by calendar effects, the different number of calendar and working days in the months, national holidays and outliers (for example, the presence of more non-working days in May could contribute to the decline in the production in some activities).

Monthly changes

In January 2023, the construction production index, calculated from the seasonally adjusted data, was above the previous month's level. The production index of civil engineering rose by 1.0% and the production of building construction by 0.8% (Table 1).

Figure 2. Changes of the Construction Production Indices compared to the previous month
(Seasonally adjusted, 2015 = 100)



1. Changes of the Construction Production Indices compared to the previous month¹

	2022												2023
	I	II	III	IV	V	VI	VII	VIII	IX	X	XI	XII	I
Construction - total	-1.2	-0.2	-0.4	-0.7	2.1	-1.5	-0.5	0.2	-0.1	0.6	0.3	-1.6	0.8
Building construction	-1.2	0.6	-0.4	-1.0	2.0	-1.1	-0.4	0.1	-0.3	0.6	-0.1	-0.4	0.8
Civil engineering	-1.3	-1.2	-0.4	-0.4	2.3	-2.1	-0.7	0.4	0.1	0.7	0.8	-3.3	1.0

¹ Seasonally adjusted.

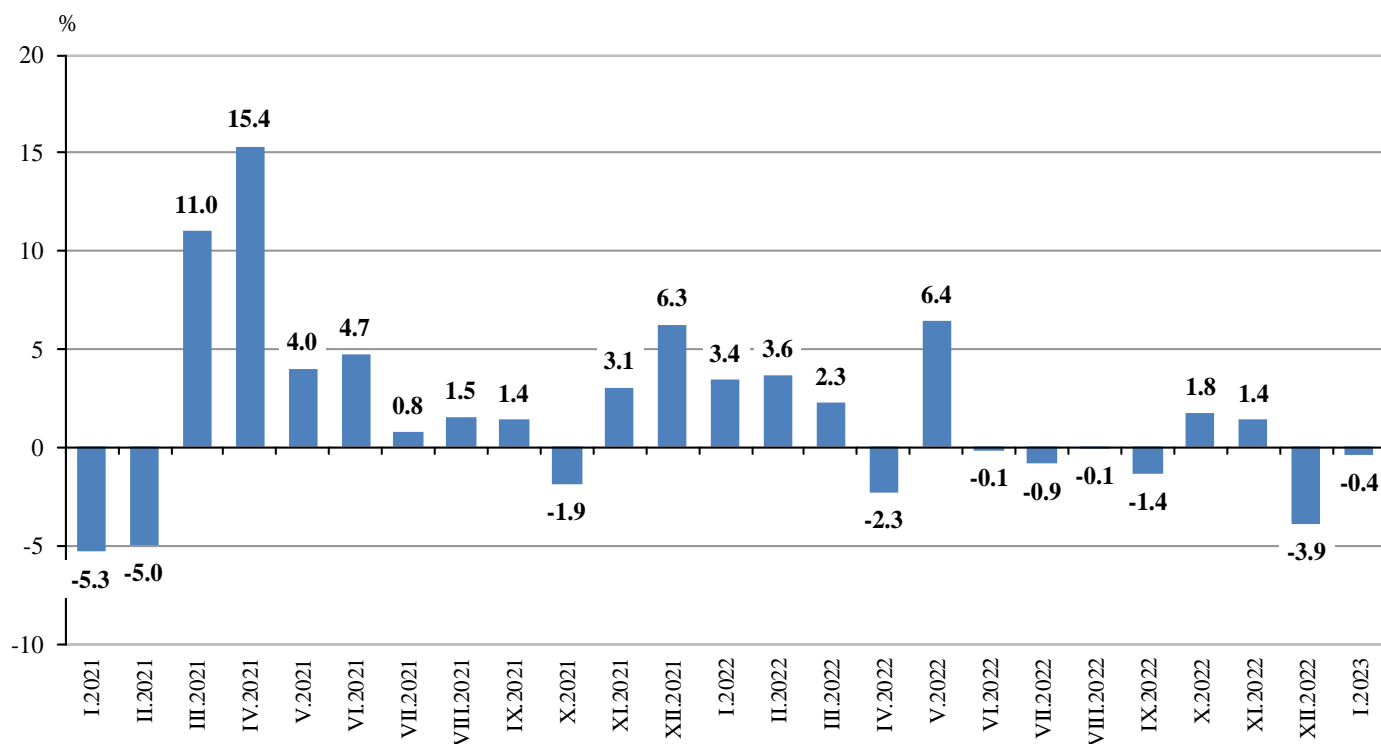
2. Construction Production Indices (Seasonally adjusted, 2015 = 100)

	2022												2023
	I	II	III	IV	V	VI	VII	VIII	IX	X	XI	XII	I
Construction - total	91.1	90.9	90.5	89.9	91.8	90.4	89.9	90.2	90.0	90.6	90.9	89.4	90.1
Building construction	97.6	98.1	97.7	96.7	98.6	97.6	97.2	97.3	97.1	97.6	97.5	97.2	97.9
Civil engineering	83.9	82.9	82.6	82.3	84.1	82.4	81.8	82.2	82.2	82.8	83.4	80.6	81.4

Annual changes

On an annual basis in January 2023, the decrease in production in construction, calculated from calendar adjusted data, was determined by the negative rate in civil engineering, where the drop was 3.1%, while in building construction an increase by 1.6% was registered (Table 3).

**Figure 3. Changes of the Construction Production Indices compared to the same month of the previous year
(Calendar adjusted, 2015 = 100)**



3. Changes of the Construction Production Indices compared to the same month of the previous year¹

(Per cent)

	2020	2021	2022												2023
	I	I	I	II	III	IV	V	VI	VII	VIII	IX	X	XI	XII	I
Construction - total	1.8	-5.3	3.4	3.6	2.3	-2.3	6.4	-0.1	-0.9	-0.1	-1.4	1.8	1.4	-3.9	-0.4
Building construction	2.0	-9.4	4.0	6.7	5.0	-1.3	8.0	1.5	0.6	1.5	-1.6	1.7	0.2	-2.4	1.6
Civil engineering	1.5	0.8	2.7	-0.3	-1.2	-3.5	4.4	-2.2	-2.8	-2.0	-1.1	1.8	2.8	-5.9	-3.1

¹ Calendar adjusted.

4. Construction Production Indices (Calendar adjusted, 2015 = 100)

	2020	2021	2022												2023
	I	I	I	II	III	IV	V	VI	VII	VIII	IX	X	XI	XII	I
Construction - total	89.5	84.7	87.6	87.1	93.9	87.7	87.6	96.2	94.9	93.0	87.0	95.9	93.9	79.7	87.3
Building construction	101.6	92.1	95.7	95.8	102.3	94.6	94.6	103.5	102.0	98.8	93.0	102.1	98.8	87.6	97.3
Civil engineering	75.9	76.5	78.5	77.4	84.6	79.9	79.8	88.1	87.1	86.5	80.3	89.1	88.6	70.9	76.1