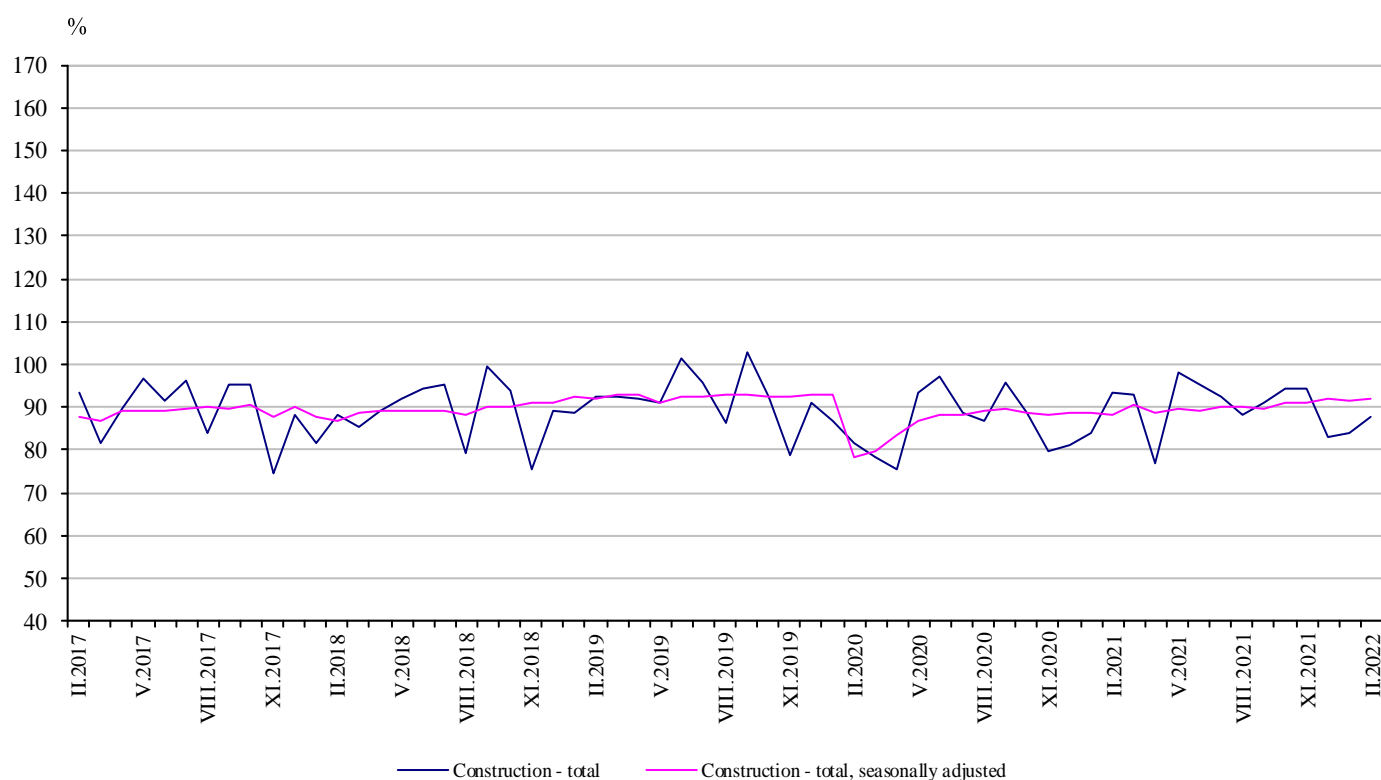


CONSTRUCTION PRODUCTION INDICES IN FEBRUARY 2022^{1,2}

According to the preliminary data, in February 2022 the index of production in section ‘Construction’ calculated on the basis of seasonally adjusted data³ was 0.2% above the level of the previous month (Table 1).

In February 2022 the calendar adjusted data⁴ showed an increase of 4.3% in construction production, compared to the same month of 2021 (Table 3).

Figure 1. Construction Production Indices (2015 = 100)



¹ Data for February 2022 are preliminary.

² The monthly indices show the short-term changes in construction production between two comparable periods. This information can be used to analyse the current state of the construction activity in the country, as well as a short-term forecast for its future development. The indices are calculated on the basis of information on hours worked in the construction. The data are collected with a monthly sample survey, which includes construction enterprises, which production exceeds 75% of the total production in construction. Construction Production Indices are calculated on the base 2015 = 100. Data for 2020 and 2021 are reconciled.

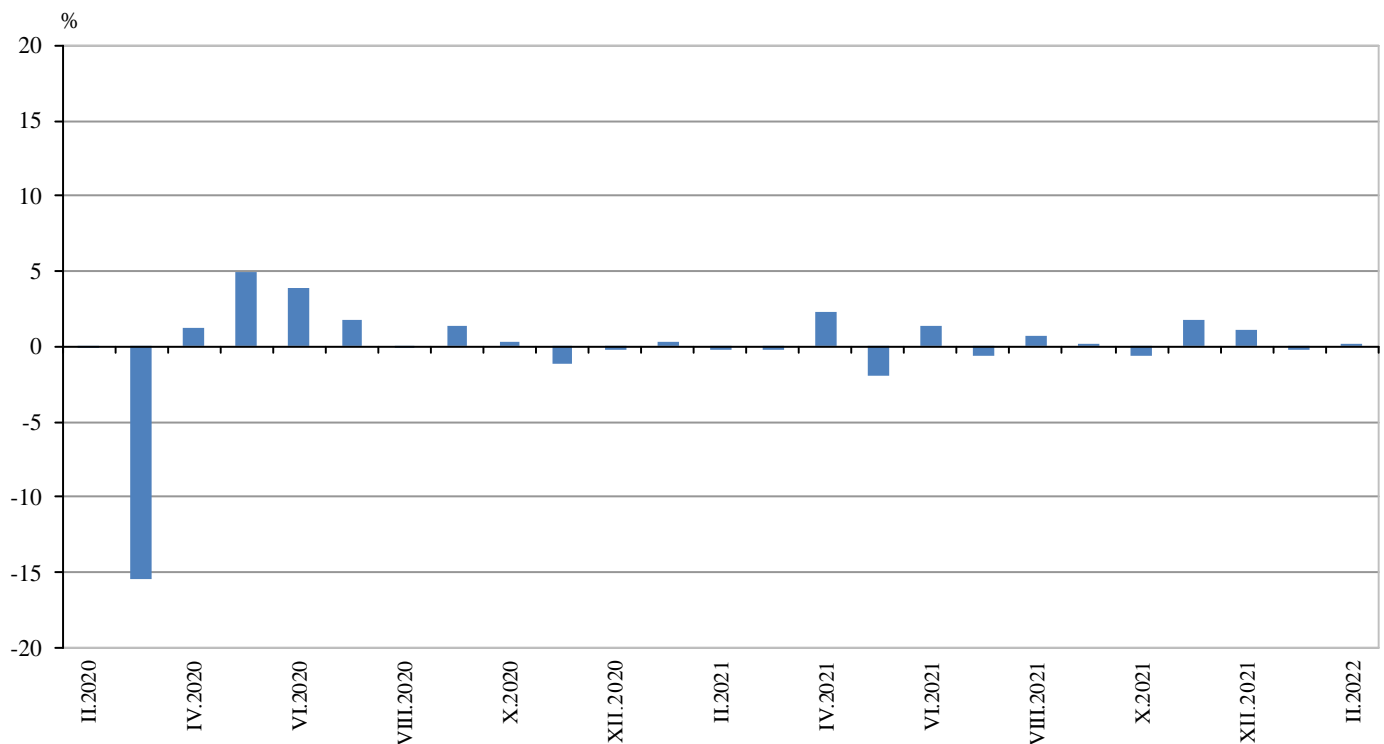
³ Seasonal adjustment is a statistical method that eliminates the seasonal component of time series.

⁴ Calendar adjustment is an adjustment for variations in monthly data, caused by calendar effects, the different number of calendar and working days in the months, national holidays and outliers (for example the presence of more non-working days in May could contribute to the decline in the production in some activities).

Monthly changes

In February 2022, the construction production index, calculated from the seasonally adjusted data, was above the level of the previous month. The production index of building construction rose by 0.8%, but production of civil engineering fell by 0.5% (Table 1).

**Figure 2. Changes of the Construction Production Indices compared to the previous month
(Seasonally adjusted, 2015 = 100)**



1. Changes of the Construction Production Indices compared to the previous month¹

	2021												2022	
	II	III	IV	V	VI	VII	VIII	IX	X	XI	XII	I	II	
Construction - total	-0.2	-0.3	2.4	-2.0	1.4	-0.7	0.8	0.1	-0.6	1.7	1.1	-0.2	0.2	
Building construction	-0.5	-0.4	2.2	-1.4	0.8	-0.1	0.6	0.7	-0.3	1.6	1.4	-0.2	0.8	
Civil engineering	0.3	-0.1	2.6	-2.8	2.1	-1.4	0.9	-0.6	-1.1	1.9	0.6	-0.3	-0.5	

¹ Seasonally adjusted.

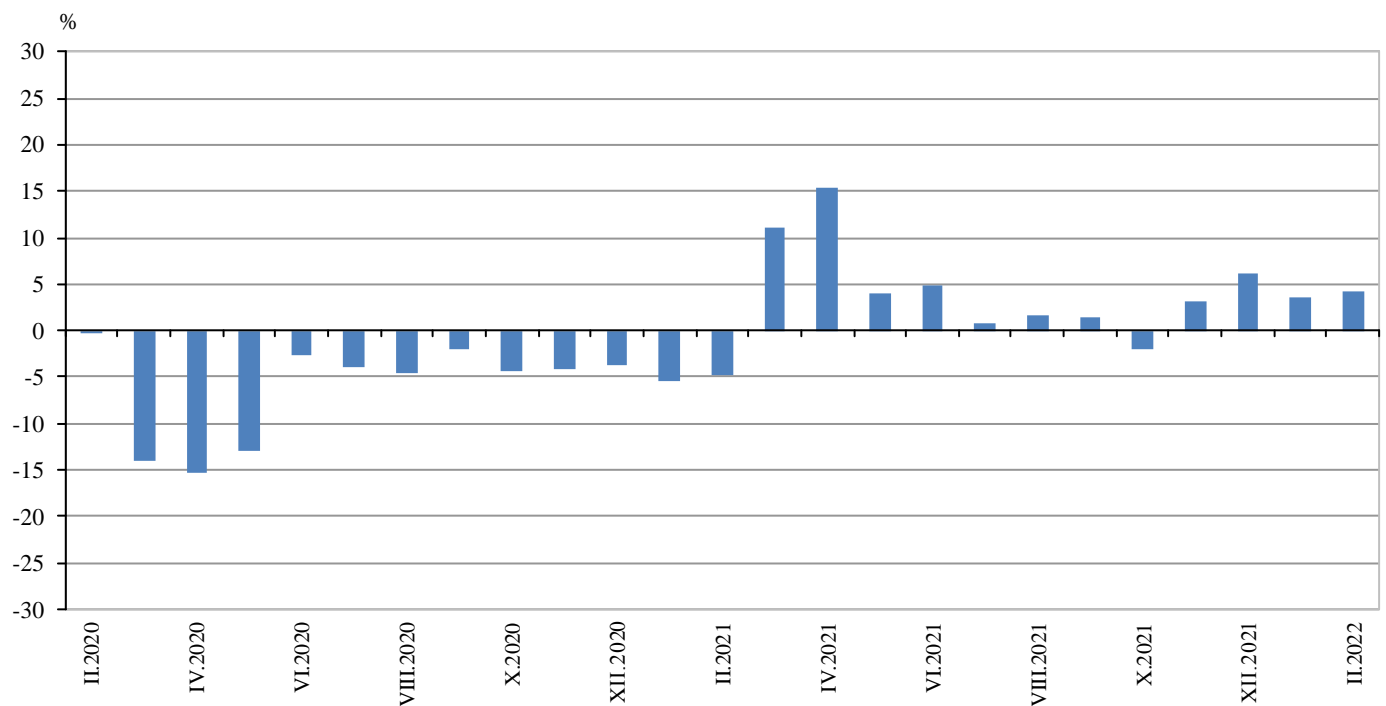
2. Construction Production Indices (Seasonally adjusted, 2015 = 100)

	2021												2022	
	II	III	IV	V	VI	VII	VIII	IX	X	XI	XII	I	II	
Construction - total	88.6	88.4	90.4	88.6	89.8	89.2	89.9	90.0	89.5	91.0	91.9	91.7	91.9	
Building construction	94.0	93.6	95.6	94.3	95.1	95.0	95.6	96.3	96.0	97.5	98.9	98.7	99.4	
Civil engineering	82.6	82.5	84.6	82.3	84.0	82.8	83.6	83.1	82.2	83.7	84.2	83.9	83.5	

Annual changes

On an annual basis in February 2022, the increase of production in construction, calculated from calendar adjusted data, was determined from the positive rate in building construction, where the growth was by 7.1% and in civil engineering - by 0.6% (Table 3).

**Figure 3. Changes of the Construction Production Indices compared to the same month of the previous year
(Calendar adjusted, 2015 = 100)**



3. Changes of the Construction Production Indices compared to the same month of the previous year¹

	(Per cent)															
	2019	2020	2021												2022	
	II	II	II	III	IV	V	VI	VII	VIII	IX	X	XI	XII	I	II	
Construction - total	8.5	-0.1	-4.9	11.1	15.4	4.0	4.8	0.7	1.6	1.4	-1.9	3.1	6.3	3.5	4.3	
Building construction	12.5	-2.3	-8.7	7.6	12.0	1.0	1.5	-1.3	-0.6	1.7	-1.9	3.6	8.5	4.2	7.1	
Civil engineering	3.0	3.2	0.5	15.9	20.3	8.0	9.1	3.3	4.4	0.9	-2.0	2.6	3.4	2.5	0.6	

¹ Calendar adjusted

4. Construction Production Indices (Calendar adjusted, 2015 = 100)

	2019	2020	2021												2022	
	II	II	II	III	IV	V	VI	VII	VIII	IX	X	XI	XII	I	II	
Construction - total	88.5	88.4	84.1	91.9	89.8	82.2	96.4	95.8	93.0	88.2	94.2	92.7	83.0	87.6	87.7	
Building construction	100.7	98.3	89.8	97.5	95.9	87.5	102.0	101.3	97.3	94.5	100.3	98.6	90.0	95.8	96.2	
Civil engineering	74.9	77.3	77.7	85.7	82.9	76.4	90.1	89.6	88.3	81.2	87.4	86.1	75.2	78.3	78.1	