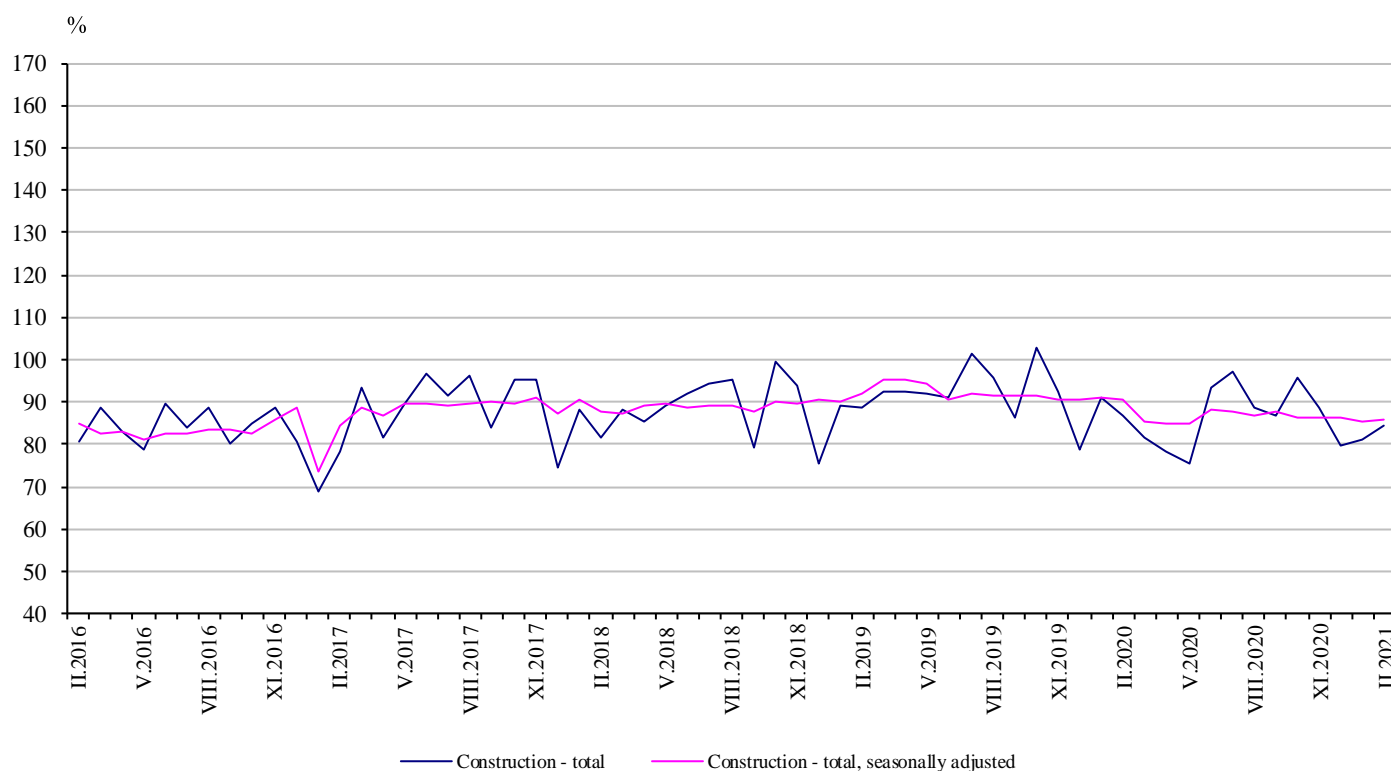


CONSTRUCTION PRODUCTION INDICES IN FEBRUARY 2021^{1,2}

According to the preliminary data, in February 2021 the index of production in section ‘Construction’ calculated on the base of seasonally adjusted data³ was 0.2% above the level of the previous month (Table 1).

In February 2021 working day adjusted data⁴ showed a decrease by 4.2% in the construction production, compared to the same month of 2020 (Table 3).

Figure 1. Construction Production Indices (2015 = 100)



¹ Data for February 2021 are preliminary.

² The monthly indices show the short-term changes in the construction production between two comparable periods. This information can be used to analyse the current state of the construction activity in the country, as well as short-term forecast for its future development. The indices are calculated on the base of information on hours worked in the construction. The data are collected with monthly sample survey, which includes construction enterprises, which production exceeds 75% of the total production in construction. Construction Production Indices are calculated on the base 2015 = 100. Data for 2019 are reconciled.

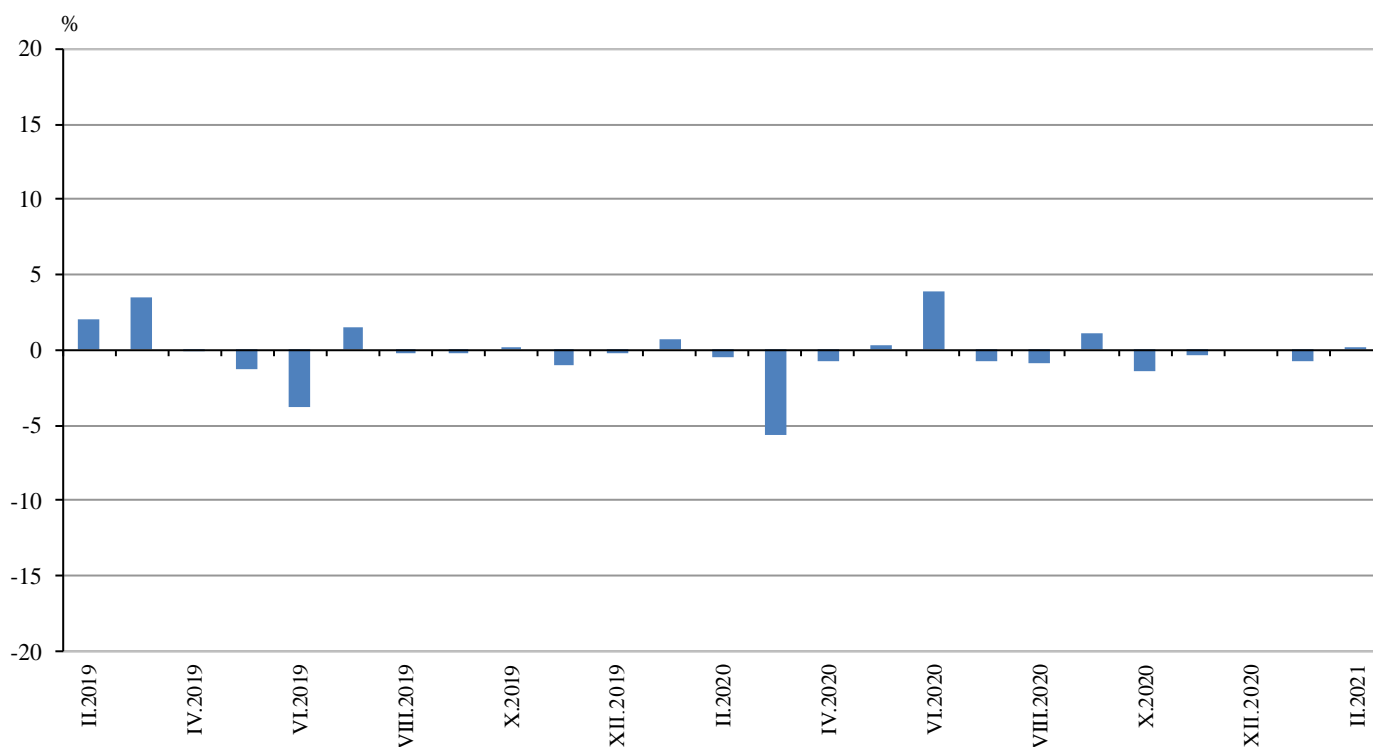
³ Seasonal adjustment is a statistical method which eliminates the seasonal component of time series.

⁴ Working day adjustment is an adjustment for variations in monthly data, caused by calendar effects, different number of calendar and working days in the months, national holidays and outliers (for example the presence of more non-working days in May could contribute to the decline in the production in some activities).

Monthly changes

In February 2021 the construction production index, calculated from the seasonally adjusted data, was above the level of the previous month. Index the production of civil engineering rose by 0.5% and production of building construction - by 0.1% (Table 1).

**Figure 2. Changes of the Construction Production Indices compared to the previous month
(Seasonally adjusted, 2015 = 100)**



1. Changes of the Construction Production Indices compared to the previous month¹

| | (Per cent) | | | | | | | | | | | | |
|-----------------------------|------------|------|------|-----|-----|------|------|-----|------|------|------|------|------|
| | 2020 | | | | | | | | | | | | 2021 |
| | II | III | IV | V | VI | VII | VIII | IX | X | XI | XII | I | II |
| Construction - total | -0.6 | -5.6 | -0.8 | 0.3 | 3.9 | -0.7 | -0.8 | 1.0 | -1.4 | -0.4 | 0.0 | -0.7 | 0.2 |
| Building construction | -1.6 | -6.2 | -0.6 | 0.0 | 4.0 | -1.2 | -1.5 | 0.8 | -1.7 | -0.6 | -0.7 | -0.9 | 0.1 |
| Civil engineering | 1.0 | -4.8 | -1.1 | 0.6 | 3.7 | 0.0 | 0.1 | 1.4 | -1.1 | 0.0 | 0.9 | -0.6 | 0.5 |

¹ Seasonally adjusted.

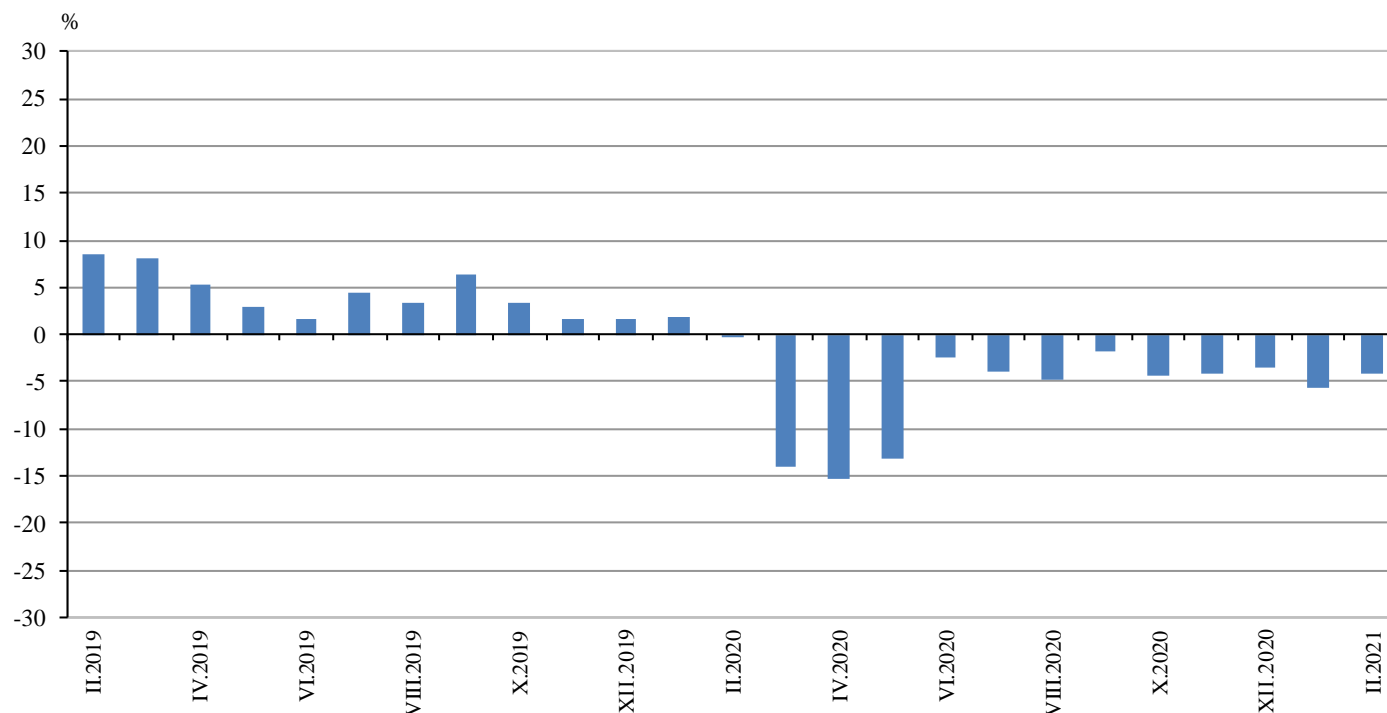
2. Construction Production Indices (Seasonally adjusted, 2015 = 100)

| | 2020 | | | | | | | | | | | | 2021 | |
|-----------------------|------|------|------|------|------|------|------|------|------|------|------|------|------|--|
| | II | III | IV | V | VI | VII | VIII | IX | X | XI | XII | I | II | |
| Construction - total | 90.4 | 85.3 | 84.7 | 84.9 | 88.2 | 87.5 | 86.8 | 87.7 | 86.5 | 86.2 | 86.2 | 85.5 | 85.7 | |
| Building construction | 99.3 | 93.1 | 92.6 | 92.6 | 96.2 | 95.1 | 93.6 | 94.3 | 92.8 | 92.2 | 91.6 | 90.8 | 90.8 | |
| Civil engineering | 80.5 | 76.7 | 75.9 | 76.3 | 79.1 | 79.2 | 79.2 | 80.3 | 79.5 | 79.4 | 80.2 | 79.7 | 80.1 | |

Annual changes

On an annual basis in February 2021, the decrease of production in construction, calculated from working day adjusted data, was determined from the negative rate in the building construction, where the drop was by 7.8%, while in the civil engineering was registered an increase by 0.8% (Table 3).

**Figure 3. Changes of the Construction Production Indices compared to the same month of the previous year
(Working day adjusted, 2015 = 100)**



3. Changes of the Construction Production Indices compared to the same month of the previous year¹

(Per cent)

| | 2018 | 2019 | 2020 | | | | | | | | | | | | 2021 | |
|-----------------------------|------|------|------|-------|-------|-------|------|------|------|------|------|------|------|------|------|--|
| | II | II | II | III | IV | V | VI | VII | VIII | IX | X | XI | XII | I | II | |
| Construction - total | 4.2 | 8.5 | -0.2 | -13.9 | -15.3 | -13.2 | -2.5 | -3.9 | -4.7 | -1.9 | -4.4 | -4.1 | -3.6 | -5.7 | -4.2 | |
| Building construction | 8.0 | 12.5 | -2.4 | -17.0 | -17.5 | -15.3 | -4.2 | -6.3 | -8.5 | -6.0 | -8.3 | -8.0 | -8.0 | -9.7 | -7.8 | |
| Civil engineering | -0.7 | 3.0 | 3.1 | -9.5 | -11.9 | -10.2 | 0.0 | -0.5 | 0.6 | 3.9 | 1.0 | 1.2 | 2.5 | 0.4 | 0.8 | |

¹Working day adjusted.

4. Construction Production Indices (Working day adjusted, 2015 = 100)

| | 2018 | 2019 | 2020 | | | | | | | | | | | | 2021 | |
|-----------------------------|------|-------|------|------|------|------|-------|-------|------|------|-------|------|------|------|------|--|
| | II | II | II | III | IV | V | VI | VII | VIII | IX | X | XI | XII | I | II | |
| Construction - total | 81.6 | 88.5 | 88.3 | 82.7 | 77.8 | 79.0 | 92.1 | 95.2 | 91.5 | 87.0 | 96.0 | 89.8 | 78.2 | 84.5 | 84.6 | |
| Building construction | 89.5 | 100.7 | 98.3 | 90.6 | 85.7 | 86.4 | 100.6 | 102.7 | 97.8 | 92.9 | 102.2 | 95.1 | 83.0 | 91.8 | 90.6 | |
| Civil engineering | 72.7 | 74.9 | 77.3 | 73.9 | 68.9 | 70.6 | 82.6 | 86.8 | 84.4 | 80.4 | 89.1 | 84.0 | 72.8 | 76.3 | 77.9 | |