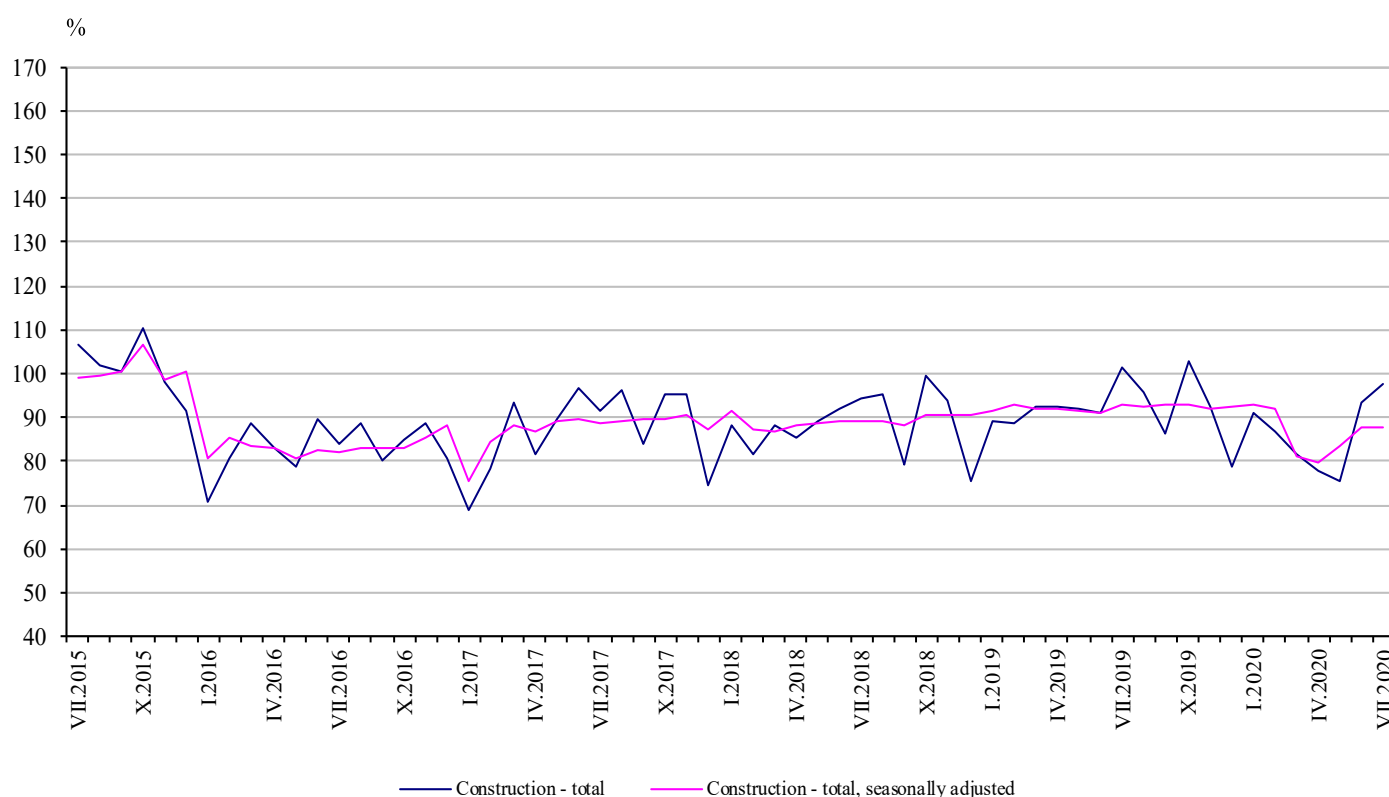


CONSTRUCTION PRODUCTION INDICES IN JULY 2020^{1,2}

According to the preliminary data, in July 2020 the index of production in section ‘Construction’ calculated on the base of seasonally adjusted data³ was 0.4% below the level of the previous month (Table 1).

In July 2020 working day adjusted data⁴ showed a decrease by 3.9% in the construction production, compared to the same month of 2019 (Table 3).

Figure 1. Construction Production Indices (2015 = 100)



¹ Data for July 2020 are preliminary.

² The monthly indices show the short-term changes in the construction production between two comparable periods. This information can be used to analyse the current state of the construction activity in the country, as well as short-term forecast for its future development. The indices are calculated on the base of information on hours worked in the construction. The data are collected with monthly sample survey, which includes construction enterprises, which production exceeds 75% of the total production in construction. Construction Production Indices are calculated on the base 2015 = 100.

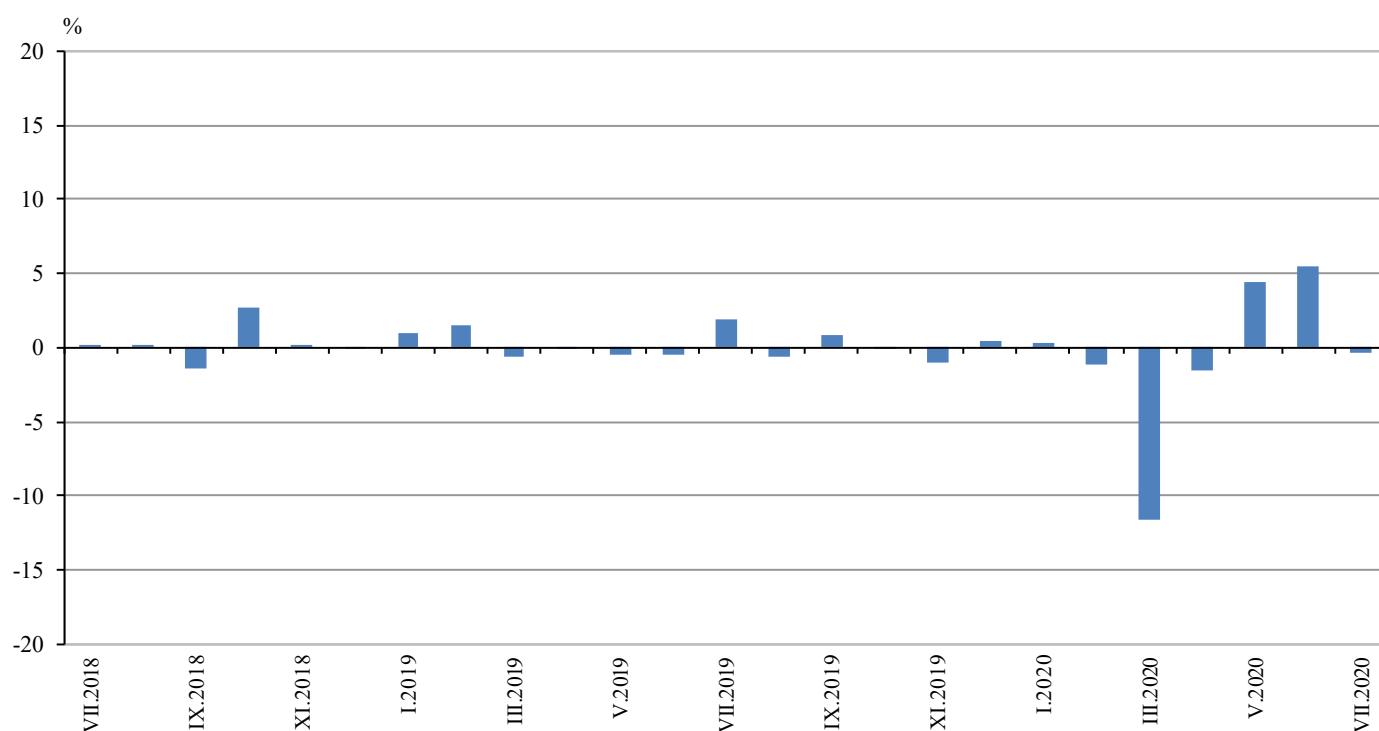
³ Seasonal adjustment is a statistical method which eliminates the seasonal component of time series.

⁴ Working day adjustment is an adjustment for variations in monthly data, caused by calendar effects, different number of calendar and working days in the months, national holidays and outliers (for example the presence of more non-working days in May could contribute to the decline in the production in some activities).

Monthly changes

In July 2020 the construction production index, calculated from the seasonally adjusted data, was below the level of the previous month. Index the production of building construction fell by 1.1%, while production of civil engineering rose by 0.5% (Table 1).

**Figure 2. Changes of the Construction Production Indices compared to the previous month
(Seasonally adjusted, 2015 = 100)**



1. Changes of the Construction Production Indices compared to the previous month¹

	2019						2020							(Per cent)
	VII	VIII	IX	X	XI	XII	I	II	III	IV	V	VI	VII	
Construction - total	1.9	-0.6	0.9	0.0	-1.0	0.4	0.3	-1.2	-11.6	-1.5	4.4	5.5	-0.4	
Building construction	0.9	0.5	0.8	-0.5	-0.5	-0.6	-0.5	-0.8	-15.5	-0.2	6.9	5.1	-1.1	
Civil engineering	3.5	-2.2	0.9	0.6	-1.6	1.9	1.4	-1.7	-6.2	-3.3	1.1	6.0	0.5	

¹ Seasonally adjusted.

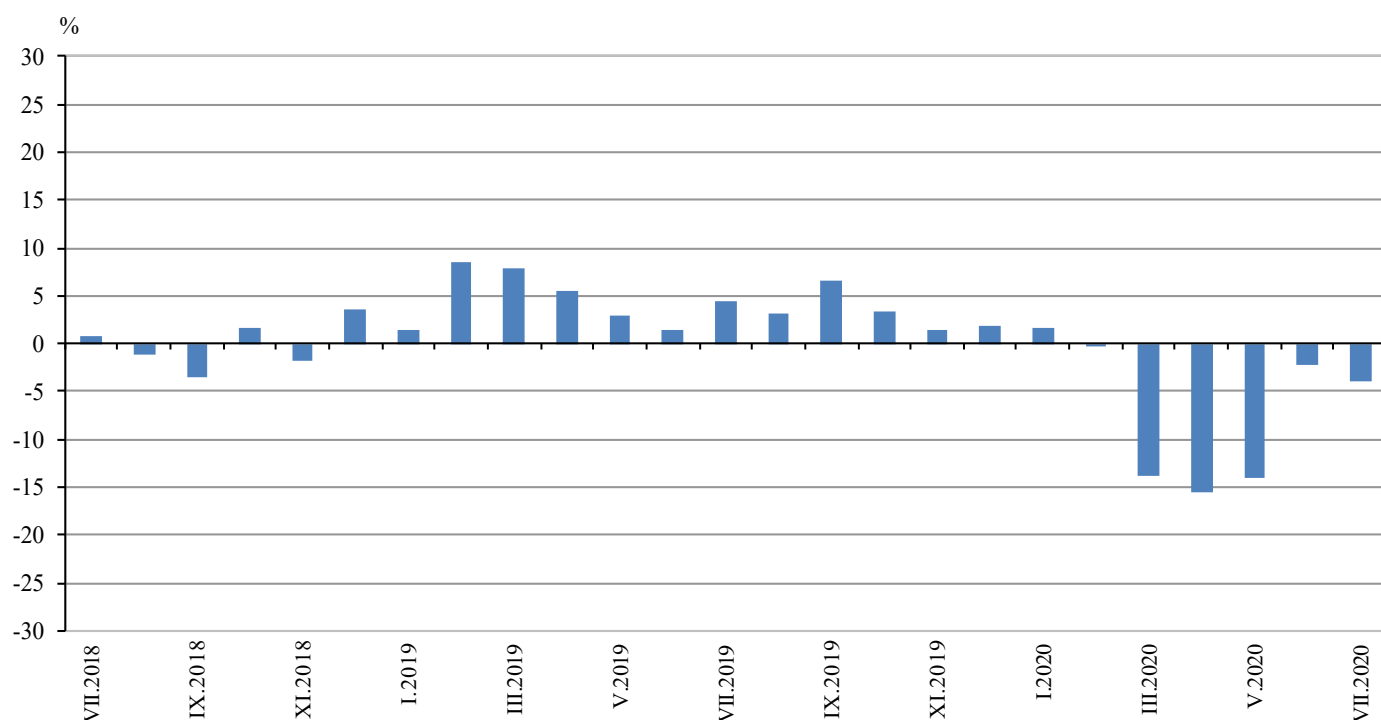
2. Construction Production Indices (Seasonally adjusted, 2015 = 100)

	2019						2020						
	VII	VIII	IX	X	XI	XII	I	II	III	IV	V	VI	VII
Construction - total	92.9	92.3	93.1	93.1	92.2	92.6	92.9	91.8	81.1	79.9	83.4	87.9	87.6
Building construction	103.3	103.9	104.7	104.2	103.7	103.1	102.6	101.8	86.0	85.9	91.8	96.5	95.4
Civil engineering	81.3	79.5	80.2	80.7	79.4	80.9	82.0	80.6	75.7	73.2	74.0	78.4	78.7

Annual changes

On an annual basis in July 2020, the decrease of production in construction, calculated from working day adjusted data, was determined from the negative rate in the building construction, where the decline was by 6.2% and in the civil engineering - by 0.7% (Table 3).

Figure 3. Changes of the Construction Production Indices compared to the same month of the previous year (Working day adjusted, 2015 = 100)



3. Changes of the Construction Production Indices compared to the same month of the previous year¹

(Per cent)

	2017	2018	2019						2020						
	VII	VII	VII	VIII	IX	X	XI	XII	I	II	III	IV	V	VI	VII
Construction - total	8.9	0.7	4.5	3.1	6.5	3.4	1.4	1.8	1.7	-0.2	-13.8	-15.5	-14.0	-2.2	-3.9
Building construction	17.3	-0.2	8.4	8.8	12.2	8.3	6.0	2.4	1.9	-2.4	-16.9	-17.9	-16.0	-4.1	-6.2
Civil engineering	-0.5	1.8	-0.5	-4.1	-0.6	-2.8	-4.5	1.0	1.5	3.0	-9.1	-12.0	-11.1	0.5	-0.7

¹ Working day adjusted.

4. Construction Production Indices (Working day adjusted, 2015 = 100)

	2017	2018	2019						2020						
	VII	VII	VII	VIII	IX	X	XI	XII	I	II	III	IV	V	VI	VII
Construction - total	94.3	94.9	99.2	96.0	88.5	100.6	93.6	81.0	89.6	88.3	82.7	77.6	78.3	92.1	95.3
Building construction	101.3	101.2	109.6	106.8	98.7	111.5	103.3	90.1	101.6	98.2	90.5	85.4	85.7	100.6	102.9
Civil engineering	86.3	87.9	87.5	83.9	77.2	88.5	82.8	70.8	76.1	77.2	73.9	68.9	70.0	82.7	86.8