

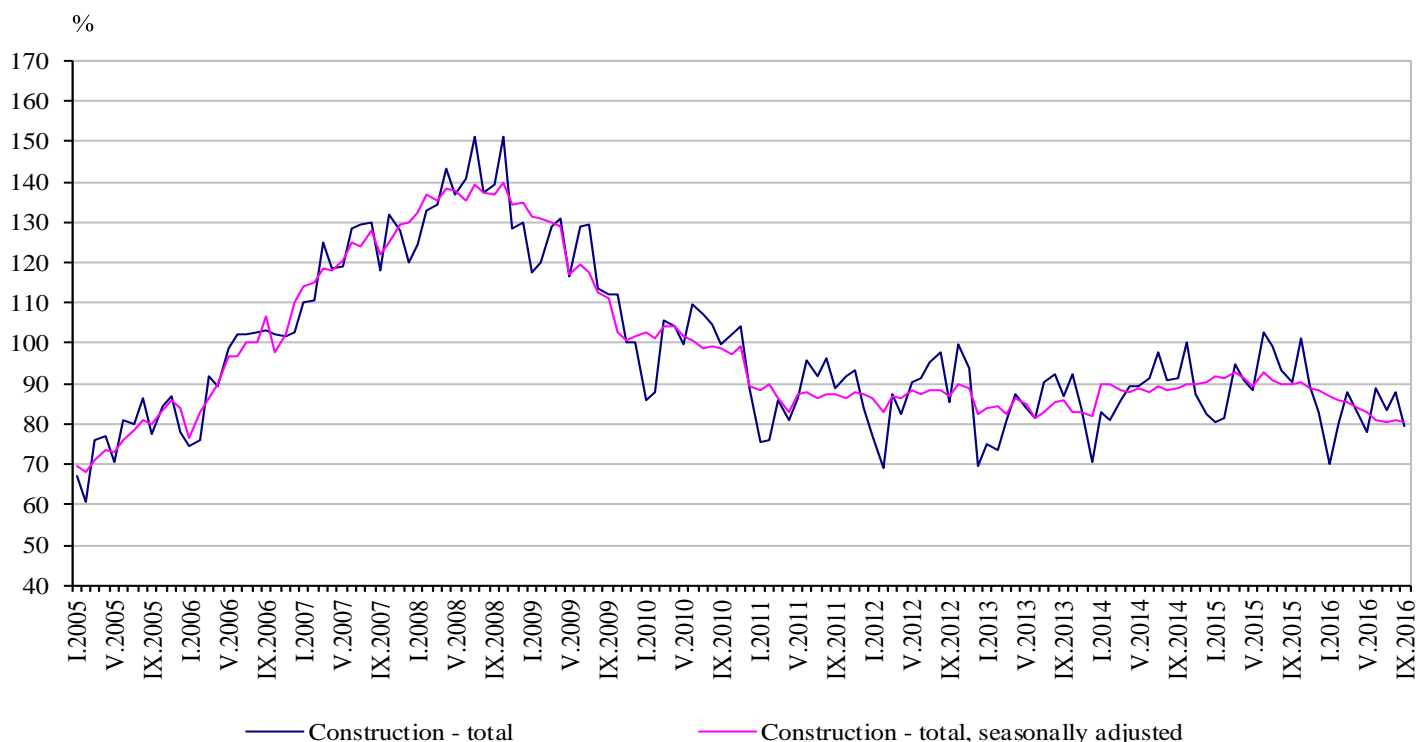


CONSTRUCTION PRODUCTION INDICES IN SEPTEMBER 2016^{1, 2}

According to the preliminary data, in September 2016 the index of production in section ‘Construction’ calculated on the base of seasonally adjusted data³ was 0.5% below the level of the previous month (Table 2).

In September 2016 working day adjusted data⁴ showed a decrease by 10.0% in the construction production, compared to the same month of 2015 (Table 4).

Figure 1. Construction Production Indices (2010 = 100)



¹ Data for September 2016 are preliminary.

² The monthly indices show the short-term changes in the construction production between two comparable periods. This information can be used to analyse the current state of the construction activity in the country, as well as short-term forecast for its future development. The indices are calculated on the base of information on hours worked in the construction. The data are collected with monthly sample survey, which includes construction enterprises, which production exceeds 75% of the total production in construction. Construction Production Indices are calculated on the base 2010 = 100.

³ Seasonal adjustment is a statistical method which eliminates the seasonal component of time series.

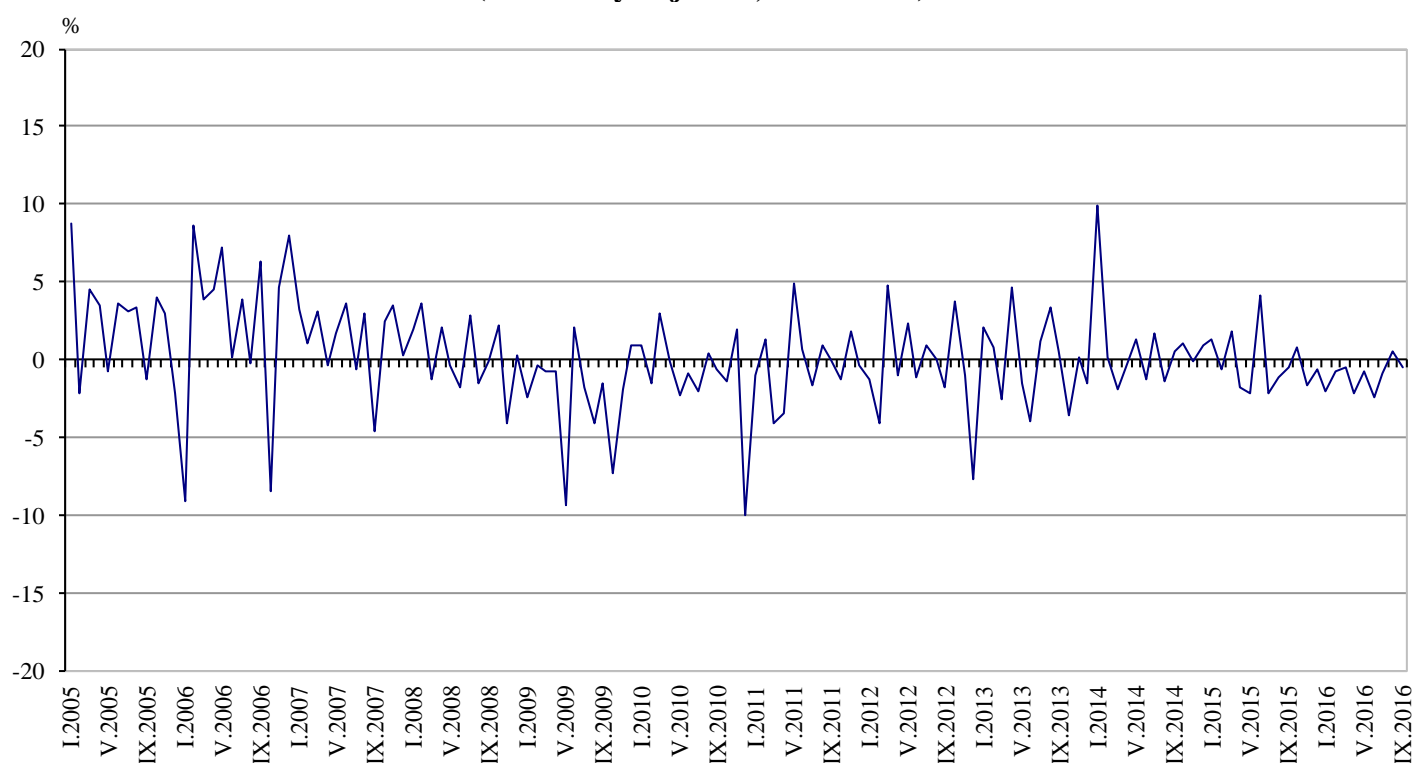
⁴ Working day adjustment is an adjustment for variations in monthly data, caused by calendar effects, different number of calendar and working days in the months, national holidays and outliers (for example the presence of more non-working days in May could contribute to the decline in the production in some activities).



Monthly changes

In September 2016 the construction production, calculated from the seasonally adjusted data, was below the level of the previous month. Index of production of civil engineering fell by 2.7%, while the production of building construction increased by 1.4% (Table 2).

**Figure 2. Changes of the Construction Production Indices compared to the previous month
(Seasonally adjusted, 2010 = 100)**



1. Construction Production Indices (Seasonally adjusted, 2010 = 100)

	2015				2016								
	IX	X	XI	XII	I	II	III	IV	V	VI	VII	VIII	IX
Construction - total	89.7	90.4	89.0	88.4	86.7	86.1	85.6	83.8	83.1	81.2	80.5	81.0	80.6
Building construction	84.5	86.8	84.6	82.1	82.3	79.2	79.4	79.0	78.6	76.0	77.1	77.7	78.8
Civil engineering	96.2	95.0	94.4	96.2	92.0	94.6	93.4	89.7	88.7	87.6	84.7	85.0	82.7



2. Changes of the Construction Production Indices compared to the previous month¹

(Per cent)

	2015				2016								
	IX	X	XI	XII	I	II	III	IV	V	VI	VII	VIII	IX
Construction - total	-0.4	0.8	-1.6	-0.7	-2.0	-0.7	-0.5	-2.2	-0.8	-2.3	-0.9	0.6	-0.5
Building construction	-1.6	2.7	-2.5	-3.0	0.3	-3.8	0.2	-0.5	-0.4	-3.4	1.4	0.9	1.4
Civil engineering	0.8	-1.3	-0.6	1.9	-4.4	2.8	-1.3	-3.9	-1.1	-1.2	-3.3	0.3	-2.7

¹ Seasonally adjusted.

Annual changes

On an annual basis in September 2016, the decrease of production in construction, calculated from working day adjusted data, was determined from the negative rate as well as in the civil engineering, where the drop was by 15.6% and in the building construction - decline by 4.7% (Table 4).

3. Construction Production Indices (Working day adjusted, 2010 = 100)

	2013	2014	2015				2016								
	IX	IX	IX	X	XI	XII	I	II	III	IV	V	VI	VII	VIII	IX
Construction - total	87.0	88.7	89.0	101.1	90.3	81.0	73.0	77.2	87.2	81.7	79.8	87.7	86.1	86.3	80.0
Building construction	88.7	84.9	81.5	98.8	85.7	74.6	68.9	70.7	82.4	77.3	75.9	83.1	82.2	82.4	77.7
Civil engineering	84.9	93.3	98.2	103.9	96.0	88.9	78.2	85.3	93.3	87.1	84.6	93.5	90.9	91.1	82.9



4. Changes of the Construction Production Indices compared to the same month of the previous year¹

(Per cent)

	2013	2014	2015				2016								
	IX	IX	IX	X	XI	XII	I	II	III	IV	V	VI	VII	VIII	IX
Construction - total	-0.7	1.9	0.3	2.7	-0.5	-2.1	-10.4	-5.2	-8.8	-10.5	-8.2	-13.0	-11.7	-10.0	-10.0
Building construction	0.3	-4.2	-4.1	4.4	-1.6	-8.8	-12.7	-8.1	-13.6	-12.1	-8.3	-15.6	-9.2	-9.3	-4.7
Civil engineering	-1.9	9.8	5.3	0.8	0.8	5.9	-7.7	-2.0	-2.8	-8.6	-8.0	-10.0	-14.3	-10.7	-15.6

¹ Working day adjusted.