

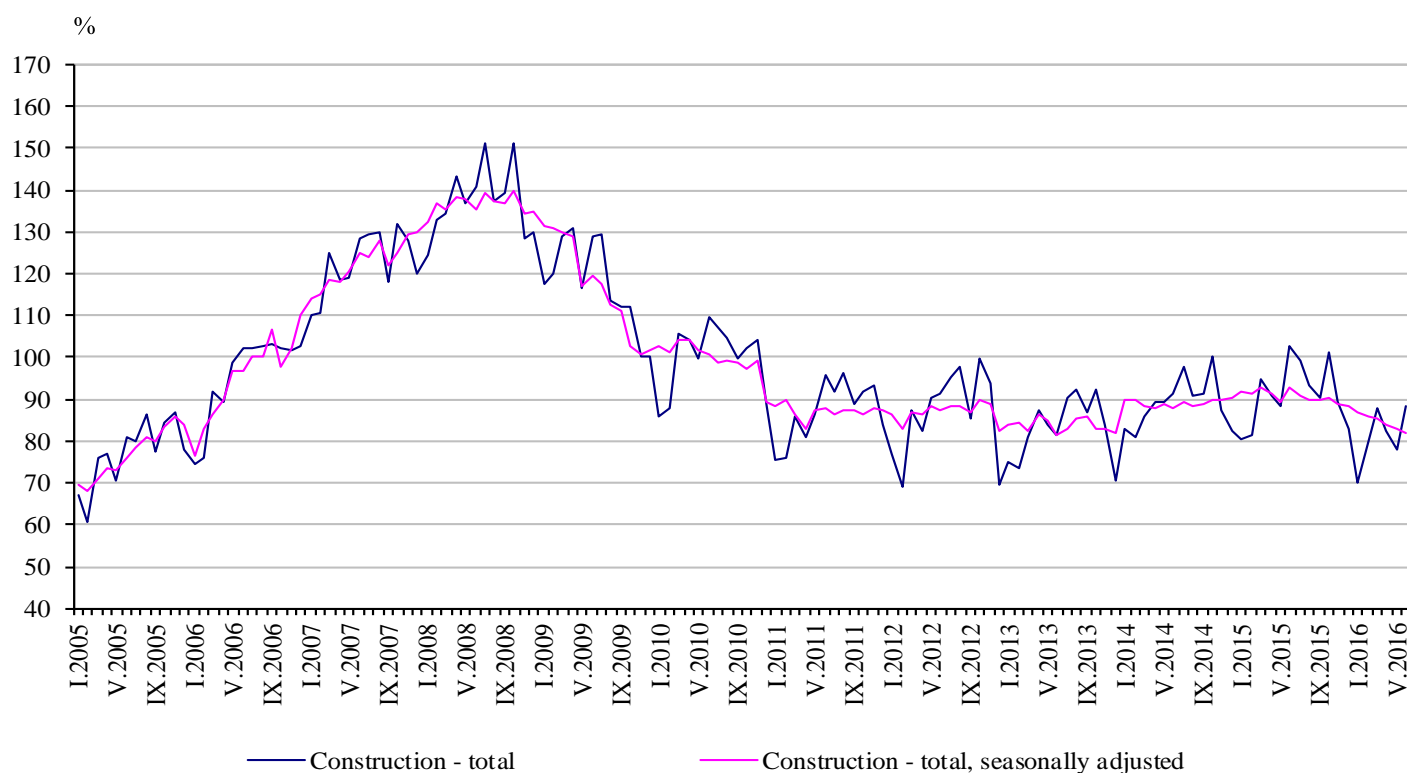


CONSTRUCTION PRODUCTION INDICES¹ IN JUNE 2016²

According to the preliminary data, in June 2016 the index of production in section 'Construction' calculated on the base of seasonally adjusted data³ was 1.6% below the level of the previous month (Table 2).

In June 2016 working day adjusted data⁴ showed a decrease by 13.0% in the construction production, compared to the same month of 2015 (Table 4).

Figure 1. Construction Production Indices (2010 = 100)



¹ Data for June 2016 are preliminary.

² The monthly indices show the short-term changes in the construction production between two comparable periods. This information can be used to analyse the current state of the construction activity in the country, as well as short-term forecast for its future development. The indices are calculated on the base of information on hours worked in the construction. The data are collected with monthly sample survey, which includes construction enterprises, which production exceeds 75% of the total production in construction. Construction Production Indices are calculated on the base 2010 = 100.

³ Seasonal adjustment is a statistical method which eliminates the seasonal component of time series.

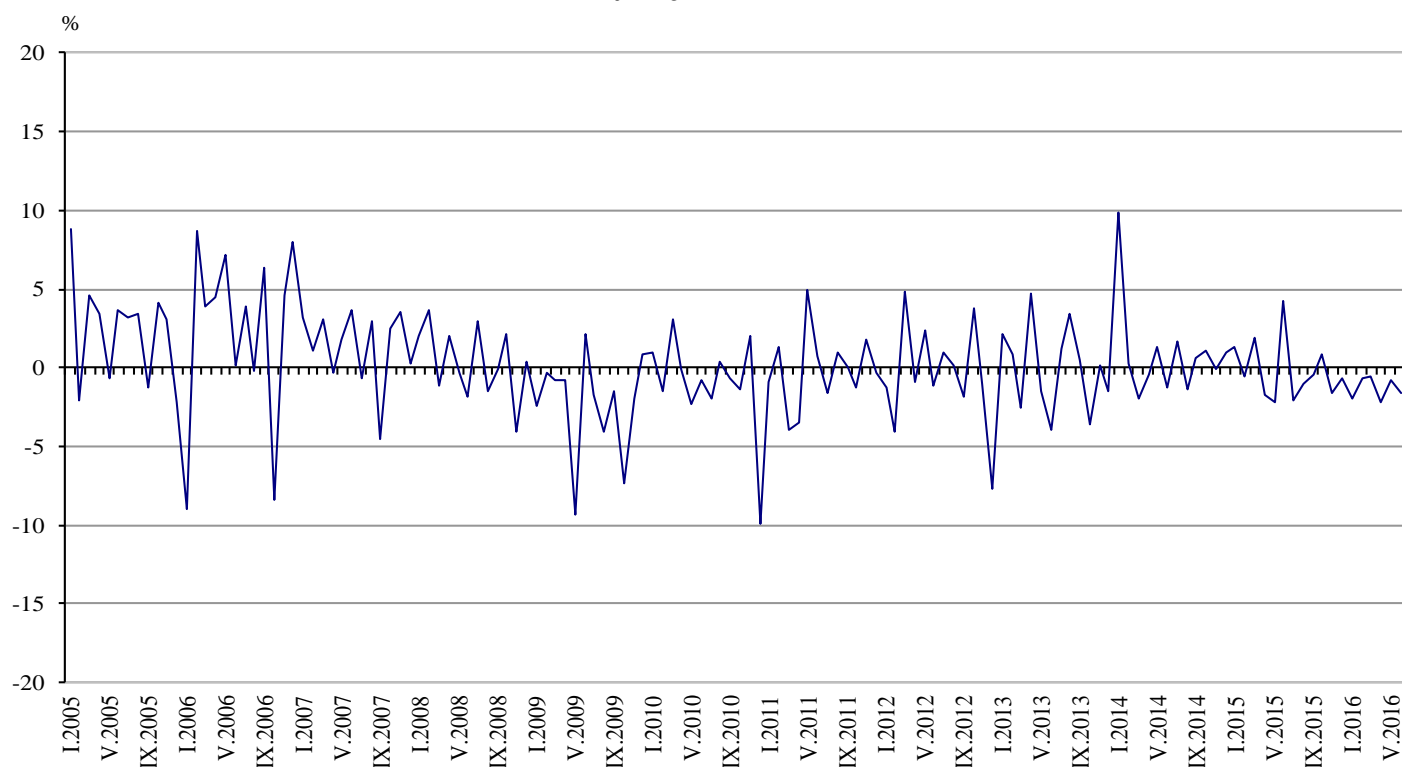
⁴ Working day adjustment is an adjustment for variations in monthly data, caused by calendar effects, different number of calendar and working days in the months, national holidays and outliers (for example the presence of more non-working days in June could contribute to the decline in the production in some activities).



Monthly changes

In June 2016 the construction production, calculated from the seasonally adjusted data, was below the level of the previous month. Index of production of building construction fell by 2.6% and the production of civil engineering - by 0.4% (Table 2).

**Figure 2. Change of the indices of the construction production compared to the previous month
(Seasonally adjusted, 2010 = 100)**



1. Construction Production Indices (Seasonally adjusted, 2010 = 100)

	2015							2016					
	VI	VII	VIII	IX	X	XI	XII	I	II	III	IV	V	VI
Construction - total	93.1	91.1	90.1	89.7	90.4	89.0	88.4	86.7	86.1	85.6	83.8	83.1	81.8
Building construction	89.3	86.2	85.8	84.5	86.8	84.6	82.1	82.3	79.2	79.4	79.0	78.6	76.6
Civil engineering	97.7	97.2	95.4	96.2	95.0	94.4	96.2	92.0	94.6	93.4	89.7	88.7	88.3



2. Changes of the Construction Production Indices compared to the previous month¹

(Per cent)

	2015							2016					
	VI	VII	VIII	IX	X	XI	XII	I	II	III	IV	V	VI
Construction - total	4.2	-2.1	-1.1	-0.4	0.8	-1.6	-0.7	-2.0	-0.7	-0.5	-2.2	-0.8	-1.6
Building construction	4.2	-3.5	-0.4	-1.6	2.7	-2.5	-3.0	0.3	-3.8	0.2	-0.5	-0.4	-2.6
Civil engineering	4.3	-0.5	-1.8	0.8	-1.3	-0.6	1.9	-4.4	2.8	-1.3	-3.9	-1.1	-0.4

¹ Seasonally adjusted.

Annual changes

On an annual basis in June 2016, the decrease of production in construction, calculated from working day adjusted data, was determined from the negative rate as well as in the building construction, where the drop was by 15.3% and in the civil engineering (decline by 10.2%) (Table 4).

3. Construction Production Indices (Working day adjusted, 2010 = 100)

	2013	2014	2015							2016					
	VI	VI	VI	VII	VIII	IX	X	XI	XII	I	II	III	IV	V	VI
Construction - total	84.9	92.2	100.9	97.5	95.9	89.0	101.1	90.3	81.0	73.0	77.2	87.2	81.7	79.8	87.8
Building construction	87.5	88.7	98.5	90.6	90.9	81.5	98.8	85.7	74.6	68.9	70.7	82.4	77.3	75.9	83.5
Civil engineering	81.6	96.5	103.8	106.1	102.0	98.2	103.9	96.0	88.9	78.2	85.3	93.3	87.1	84.6	93.2



4. Changes of the Construction Production Indices compared to the same month of the previous year¹

(Per cent)

	2013	2014	2015						2016						
	VI	VI	VI	VII	VIII	IX	X	XI	XII	I	II	III	IV	V	VI
Construction - total	-7.9	8.6	9.4	1.8	2.9	0.3	2.7	-0.5	-2.1	-10.4	-5.2	-8.8	-10.5	-8.2	-13.0
Building construction	-5.3	1.3	11.1	-1.5	2.0	-4.1	4.4	-1.6	-8.8	-12.7	-8.1	-13.6	-12.1	-8.3	-15.3
Civil engineering	-11.1	18.4	7.5	5.6	3.9	5.3	0.8	0.8	5.9	-7.7	-2.0	-2.8	-8.6	-8.0	-10.2

¹ Working day adjusted.