

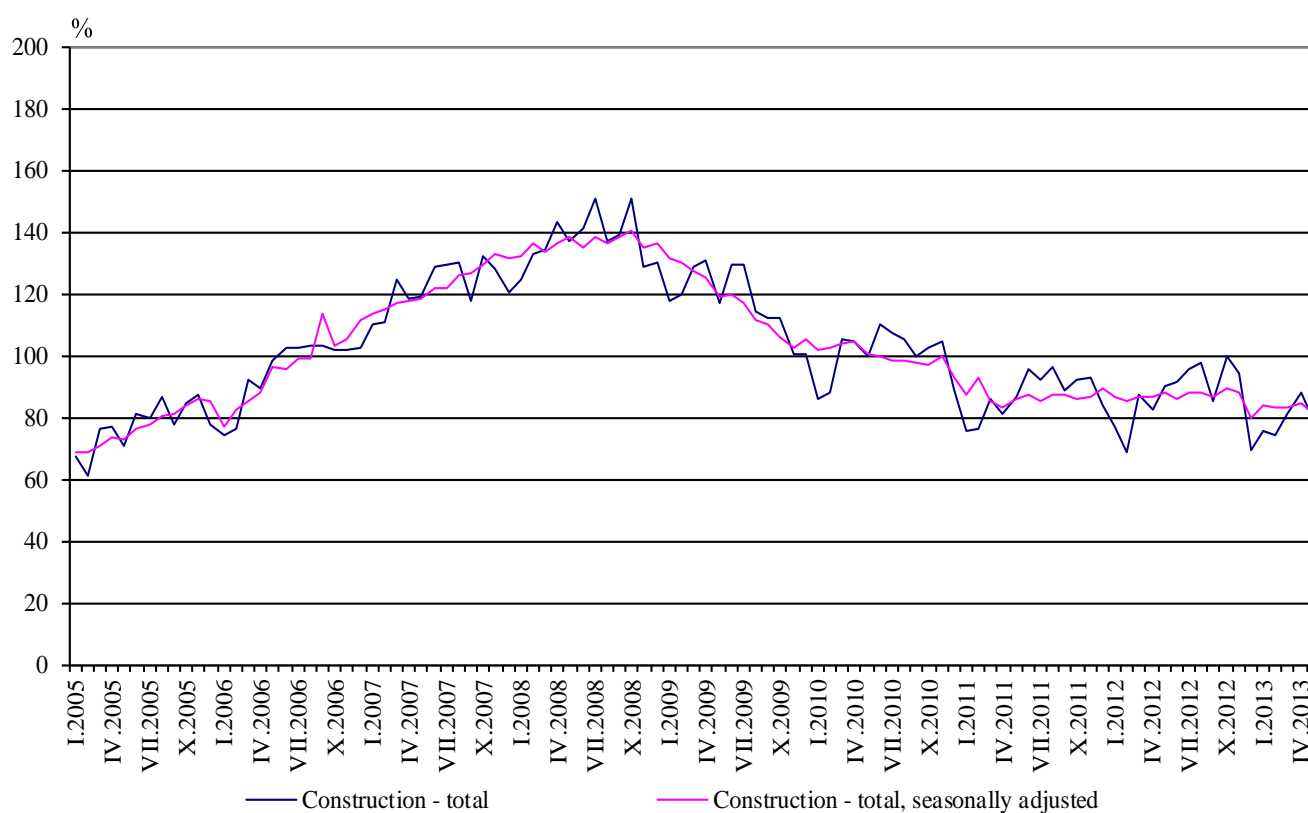


## CONSTRUCTION PRODUCTION INDICES<sup>1</sup> IN MAY 2013<sup>2</sup>

According to the preliminary data, in May 2013, the index of production in section 'Construction', calculated on the base of seasonally adjusted data<sup>3</sup>, was 4.2% below the level of the previous month (Table 2).

In May 2013 working day adjusted data<sup>4</sup> showed a decrease by 10.8% in the construction production, comparing to the same month of 2012 (Table 4).

**Figure 1. Construction Production Indices  
(2010 = 100)**



<sup>1</sup> Data for May 2013 are preliminary.

<sup>2</sup> The monthly indices show the short-term changes in the construction production between two comparable periods. This information can be used to analyze the current state of the construction activity in the country, as well as short-term forecast for its future development. The indices are calculated on the base of information on hours worked in the construction. The data are collected with monthly sample survey, which includes construction enterprises, which production exceeds 75% of the total production in construction. Construction Production Indices are calculated on the base (2010 = 100).

<sup>3</sup> Seasonal adjustment is a statistical method, which eliminates the seasonal component of time series.

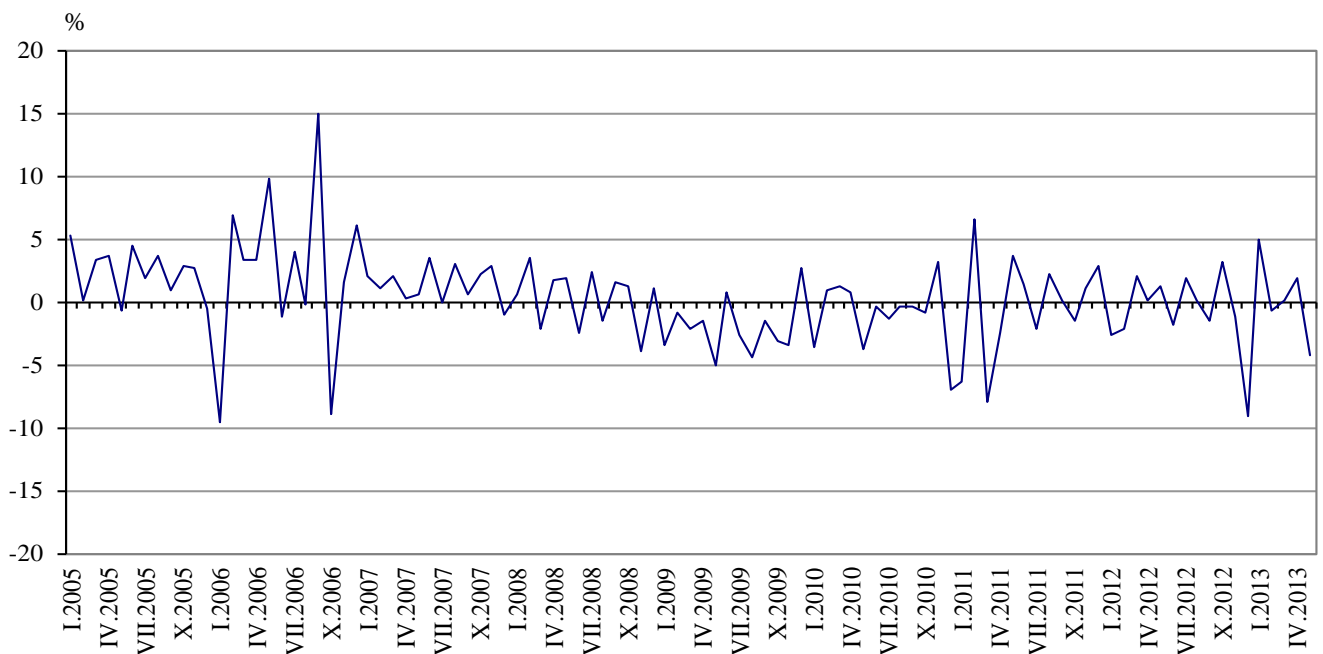
<sup>4</sup> Working day adjustment is an adjustment for variations in monthly data, caused by calendar effects, different number of calendar and working days in the months, national holidays and outliers (for example the presence of more non-working days in May could contribute to the decline in the production in some activities).



## Monthly changes

In May 2013 the construction production was below the level of the previous month. Index of production of civil engineering, calculated from the seasonally adjusted data, decreased by 5.6% and the production of building construction - by 3.2% (Table 2).

**Figure 2. Percentage change of the indices of the construction production compared to the previous month**  
**(Seasonally adjusted, 2010 = 100)**



### 1. Construction Production Indices

(Seasonally adjusted, 2010 = 100)

	2012								2013				
	V	VI	VII	VIII	IX	X	XI	XII	I	II	III	IV	V
<b>Construction - total</b>	87.7	86.0	87.6	87.7	86.4	89.1	88.0	80.0	83.9	83.2	83.3	84.8	81.2
Building construction	88.7	87.4	88.4	87.7	86.7	87.5	86.9	85.3	88.7	87.9	89.5	88.3	85.5
Civil engineering	86.4	84.2	86.5	87.7	86.1	91.1	89.4	73.4	77.9	77.3	75.6	80.4	75.9



## 2. Percentage changes of the Construction Production Indices compared to the previous month<sup>1</sup>

	2012								2013				
	V	VI	VII	VIII	IX	X	XI	XII	I	II	III	IV	V
<b>Construction - total</b>	1.2	-1.9	1.9	0.1	-1.5	3.1	-1.2	-9.1	4.9	-0.8	0.1	1.8	-4.2
Building construction	-0.8	-1.5	1.1	-0.8	-1.1	0.9	-0.7	-1.8	4.0	-0.9	1.8	-1.3	-3.2
Civil engineering	3.6	-2.5	2.7	1.4	-1.8	5.8	-1.9	-17.9	6.1	-0.8	-2.2	6.3	-5.6

<sup>1</sup> Seasonally adjusted.

### Annual changes

On an annual basis in May 2013, the decrease of production in construction, calculated from working day adjusted data, was determined from the negative rate in the civil engineering as well as in the building construction, where was registered the drop by 13.8% and by 8.5% (Table 4).

### 3. Construction Production Indices (Working day adjusted, 2010 = 100)

	2010	2011	2012								2013				
	V	V	V	VI	VII	VIII	IX	X	XI	XII	I	II	III	IV	V
<b>Construction - total</b>	100.0	87.4	89.7	91.7	95.8	96.0	86.3	98.8	93.1	71.8	74.9	73.9	81.5	86.9	80.0
Building construction	99.5	93.6	90.9	92.2	97.6	97.2	87.2	98.3	92.4	74.9	80.9	79.9	87.8	91.3	83.2
Civil engineering	100.6	79.7	88.3	91.0	93.6	94.5	85.2	99.5	93.9	68.0	67.4	66.4	73.6	81.5	76.1



#### 4. Percentage changes of the Construction Production Indices compared to the same month of the previous year<sup>1</sup>

	2010	2011	2012									2013				
	V	V	V	VI	VII	VIII	IX	X	XI	XII	I	II	III	IV	V	
<b>Construction - total</b>	-14.0	-12.6	2.6	-3.4	2.9	0.8	-2.6	5.3	1.1	-12.4	-2.2	8.0	-5.8	3.7	-10.8	
Building construction	-28.0	-5.9	-2.9	-8.8	-1.9	-3.7	-7.6	-1.1	-4.0	-11.4	0.7	15.1	-1.6	6.4	-8.5	
Civil engineering	12.7	-20.8	10.8	4.5	9.9	7.1	4.5	14.6	8.2	-13.9	-6.4	-1.2	-11.4	0.1	-13.8	

<sup>1</sup> Working day adjusted.