

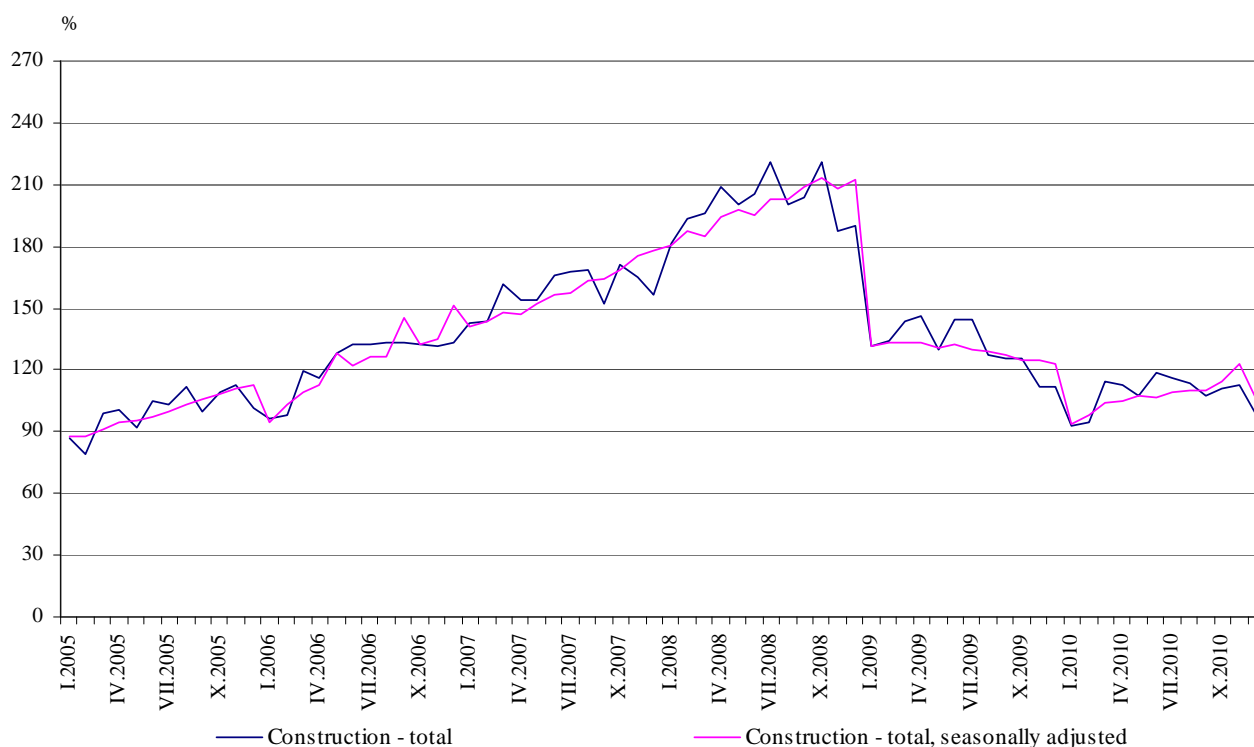


CONSTRUCTION PRODUCTION INDICES¹ IN DECEMBER 2010²

According to the preliminary data of the NSI, the production in section 'Construction', calculated on the base of seasonally adjusted data³, registered a drop by 13.0% in December 2010, compared to the previous month (Table 2).

In December 2010 working day adjusted data⁴ showed a decrease by 12.4% in the construction production, comparing to the same month of 2009 (Table 4).

**Figure 1. Construction Production Indices
(2005 = 100)**



¹ Data for December 2010 are preliminary.

² The monthly indices show the short-term changes in the construction production between two comparable periods. This information can be used to analyze the current state of the construction activity in the country, as well as short-term forecast for its future development. The indices are calculated on the base of information on hours worked in the construction. The data are collected with monthly sample survey, which includes construction enterprises, which production exceeds 75% of the total production in construction. Construction Production Indices are calculated on the base (2005 = 100).

³ **Seasonal adjustment** is a statistical method, which eliminates the seasonal component of time series and it is particularly suitable for long-term comparisons and analysis of the data.

⁴ **Working day adjustment** is an adjustment for variations in monthly data, caused by calendar effects, different number of calendar and working days in the months, national holidays and outliers (for example the presence of more non-working days in May could contribute to the decline in the production in some activities).

The seasonally and working day adjusted data for period 2000 - 2010 can be found in NSI internet web-site:
(<http://www.nsi.bg/otrasalen.php?otr=32>).



Figure 2. Percentage change of the indices of the construction production compared to the previous month
(Seasonally adjusted , 2005 = 100)

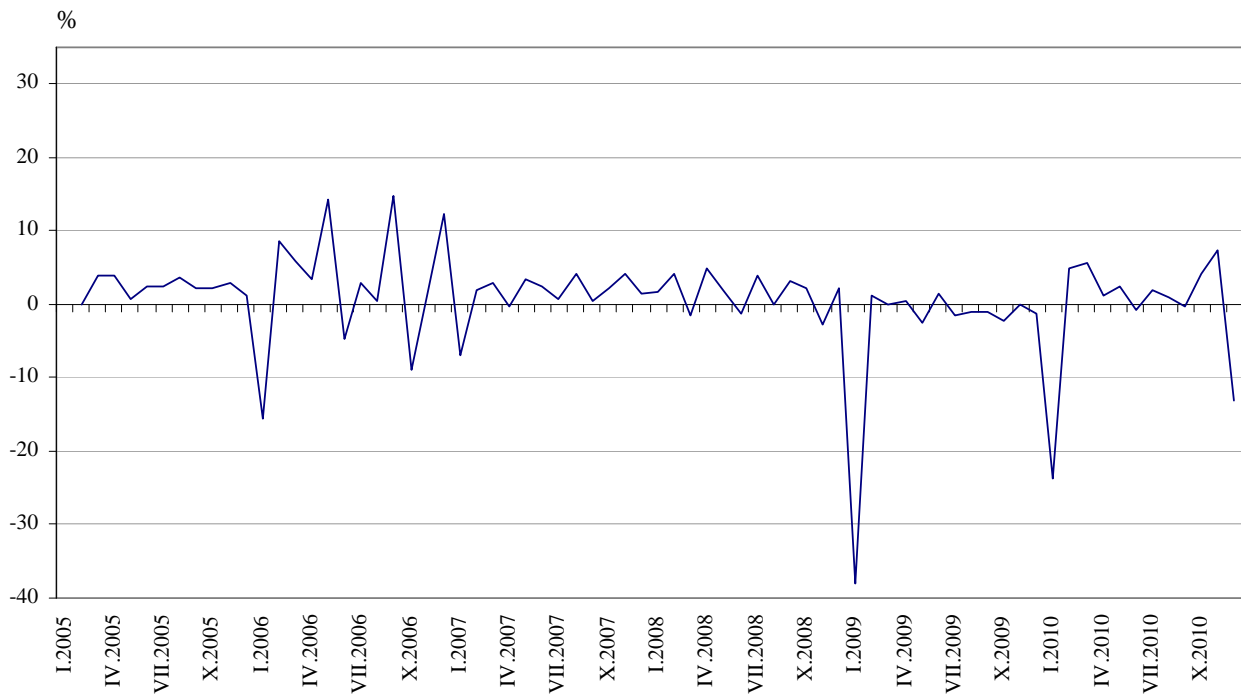


Table 1

Monthly Construction Production Indices
(Seasonally adjusted, 2005 = 100)

	2009	2010											
	XII	I	II	III	IV	V	VI	VII	VIII	IX	X	XI	XII
Construction - total	122.9	93.7	98.2	103.9	105.3	107.7	106.8	109.0	109.9	109.7	114.2	122.6	106.7
Building construction	103.1	98.7	95.7	95.9	92.7	91.8	90.1	88.2	88.2	86.6	88.5	93.7	82.2
Civil engineering	144.1	142.8	142.0	144.5	145.0	146.2	147.1	146.1	148.9	147.0	150.7	151.6	148.5



Monthly changes

In December 2010 the construction production was below the level of previous month. The production of building construction fell by 12.3% and the production of civil engineering - by 2.1%, calculated from seasonally adjusted data (Table 2).

Table 2

Percentage changes of monthly Construction Production Indices compared to the previous month¹

	2009	2010											
	XII	I	II	III	IV	V	VI	VII	VIII	IX	X	XI	XII
Construction - total	-1.3	-23.7	4.8	5.8	1.3	2.3	-0.9	2.0	0.9	-0.2	4.1	7.4	-13.0
Building construction	-2.8	-4.3	-3.0	0.2	-3.3	-1.0	-1.8	-2.1	0.0	-1.8	2.1	5.9	-12.3
Civil engineering	0.3	-0.9	-0.6	1.8	0.3	0.8	0.6	-0.7	1.9	-1.3	2.5	0.6	-2.1

¹ Seasonally adjusted.

Table 3

Monthly Construction Production Indices (working day adjusted, 2005 = 100)

	2007	2008	2009	2010											
	XII	XII	XII	I	II	III	IV	V	VI	VII	VIII	IX	X	XI	XII
Construction - total	162.9	194.0	113.0	95.0	95.0	114.3	113.1	110.5	117.9	116.1	113.6	109.5	112.0	113.3	99.0
Building construction	167.0	185.1	100.1	85.8	82.5	97.6	95.2	91.7	97.2	96.7	97.1	91.9	92.2	92.2	81.1
Civil engineering	152.5	210.6	138.3	117.7	125.3	152.1	154.5	150.8	164.5	158.3	154.8	149.3	157.6	160.0	138.5



Annual changes

On annual bases in December 2010 the decrease of production in construction, calculated from working day adjusted was determined mainly from the drop by 19.0% in the building construction, while the civil engineering showed an increase by 0.1 % (Table 4).

Table 4

Percentage changes of monthly Construction Production Indices compared to the same month of the previous year¹

	2007	2008	2009	2010											
	XII	XII	XII	I	II	III	IV	V	VI	VII	VIII	IX	X	XI	XII
Construction - total	18.3	19.1	-41.7	-27.9	-29.0	-21.5	-22.8	-17.8	-17.7	-18.8	-11.6	-13.0	-10.7	0.8	-12.4
Building construction	21.2	10.9	-45.9	-35.2	-37.3	-30.4	-32.2	-28.0	-27.3	-26.5	-18.8	-20.3	-18.9	-8.7	-19.0
Civil engineering	14.3	38.1	-34.3	-7.2	-11.3	-4.8	-4.5	-1.9	-0.5	-5.1	2.7	1.9	5.2	12.9	0.1

¹ Working day adjusted.