



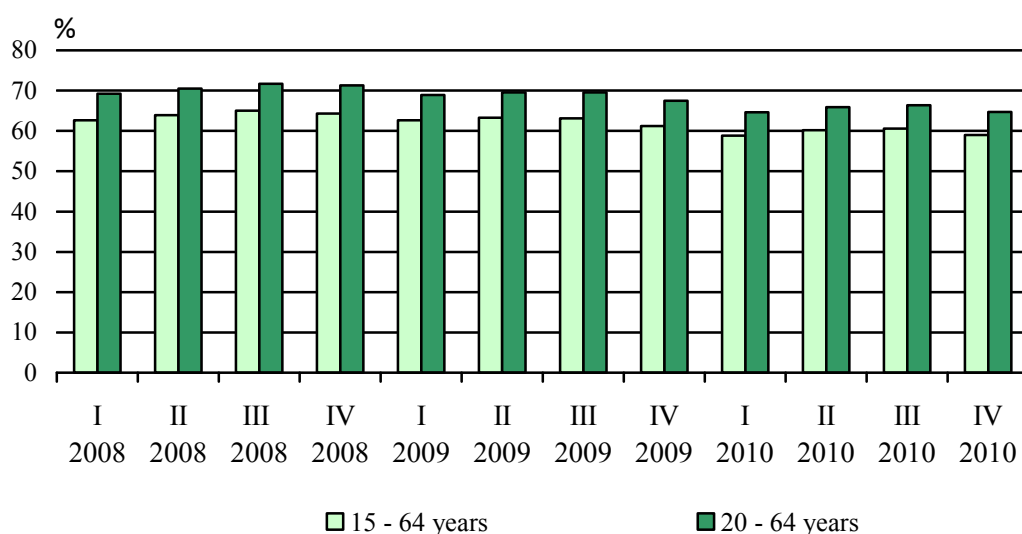
MAIN LABOUR FORCE SURVEY RESULTS FOURTH QUARTER 2010

1. Main labour market indicators for the population aged 15 - 64

According to the results from the Labour Force Survey, carried out by the National Statistical Institute in the fourth quarter of 2010 **the number of economically active population aged 15 - 64** was 3 358.9 thousand. The total activity rate was 66.6% and compared to the fourth quarter of 2009 retained almost the same level. This indicator declined for men by 1.1 percentage points - up to 70.3%, while for women its value raised by 1.2 percentage points and reached 62.9%.

In the fourth quarter of 2010 **the employment rate of population of 15 - 64 years of age** was 59.0%, by 2.2 percentage points lower in comparison with the same quarter of 2009. For men decrease of the employment rate was considerably higher than that for women - by 3.6 and 0.8 percentage points respectively. The level of employment reached 61.7% for men and 56.4% for women.

Figure 1. Employment rates by age group and by quarter



Between the fourth quarters of 2009 and 2010, **the employment rate for the age group 20 - 64 years** (an indicator laid down in the European Commission strategy Europe 2020) fell by 2.8 percentage points and at the end of the period concerned it was 64.7% - 67.7% for men and 61.8% for women.

In the fourth quarter of 2010 **the employment rate of older people (aged 55 - 64)** was 42.9%, by 2.8 percentage points lower compared to the same quarter of 2009. The male and female employment rate for the age group concerned was 48.5 and 38.0% respectively.

Inactive population aged 15 - 64 was 1 688.2 thousand and had a relative share of 33.4% of the population in the same age group. Among all inactive population 746.5 thousand were men



and 941.7 thousand were women. By sex the inactivity rate was 29.7% for men and 37.1% for women.

Discouraged persons aged 15 - 64 were 225.7 thousand or 13.4% of inactive population in the same age group. In comparison with the fourth quarter of 2009 their number did not change considerably.

2. Main characteristics of employed persons aged 15 and over

In the fourth quarter of 2010 the total number of **employed persons aged 15 and over** is 3 023.7 thousand, accounting 46.3% of the population in the same age group. Compared to the same quarter of 2009 it dropped by 147.9 thousand (4.7%), and the share in the population - by 1.9 percentage points. The fall of employment was higher for men than for women - the number of employed decreased by 6.5 and 2.5% respectively.

Between fourth quarters of 2009 and 2010 the number of employed with low level of education (lower secondary or less) marked a highest drop (by 17.7%) as compared to that of employed with higher level of education - down by 3.0% for upper education and by 1.6% for tertiary education.

According to their professional status employed persons were classified in following groups: employers - 116.8 thousand (3.9%), self employed without employees - 234.8 thousand (7.8%), employees - 2 642.7 thousand (87.4%) and unpaid family workers - 29.4 thousand (1.0%). Of the total employees 1 910.7 thousand (72.3%), worked in the private sector and 732.0 thousand (27.7%) - in the public sector. In comparison with a year ago the number of employees was by 5.4% lower in the private sector and by 3.0% lower in the public sector.

As regards economic sectors in the fourth quarter of 2010, 1 840.2 thousand (60.9% of total employed) worked in services, 991.8 thousand (32.8%) - in industry and 191.7 thousand (6.3%) - in agriculture. The services were affected from the employment decline less than other economic sectors - the number of employed decreased by 1.2% from the fourth quarter of 2009.

3. Unemployment

In the fourth quarter of 2010, the **number of unemployed** was 382.4 thousand and the **unemployment rate** - 11.2%. In comparison with the same quarter of 2009 the number of unemployed went up by 109.6 thousand and the unemployment rate - by 3.3 percentage points.

The unemployment growth was larger for men than for women (the unemployment rate rose by 3.7 and 2.9 percentage points respectively), and in the fourth quarter of 2010 the male unemployment rate (12.1%) surpassed the female unemployment rate by almost two percentage points (10.3%).

The young unemployed (15 - 24 years of age) were 70.4 thousand, and the youth unemployment rate reached 26.5%, 28.8% for men and 23.2% for women respectively.

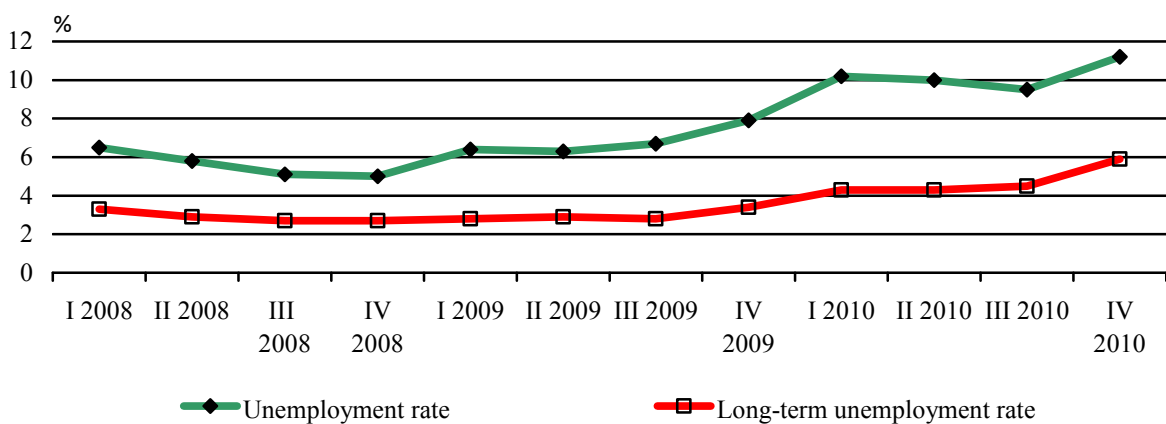
The number of unemployed with duration of the unemployment less than a year increased by 18.3% compared to the fourth quarter of 2009 and reached 182.6 thousand in the fourth quarter of 2010. The number of long-term unemployed was 199.8 thousand, which was 52.2% of all



unemployed. The long-term unemployment rate went up by 2.5 percentage points and achieved 5.9%.

Previous employment experience had 319.9 thousand unemployed persons, or 83.7% of the total number of unemployed, and 62.5 thousand (16.3%) were looking for their first job. Compared to the fourth quarter of 2009, there was some increase in the share of the unemployed looking for a first job at the expense of those with previous employment experience.

Figure 2. Unemployment rate and long-term unemployment rate by quarter



METHODOLOGICAL NOTES

The Labour Force Survey (LFS) is a continuous sample survey providing quarterly and annual data on the economic activity of the population aged 15 and over. The survey covers non-institutional households.

Reference period - the characteristics of each interviewee refer to his/her status during a defined calendar week.

Economically active population (labour force) comprises of all employed and unemployed persons.

Employed are persons aged 15 and over who during the reference period:

- performed some work for at least one hour for pay in cash or in kind or other income;
- did not work but had a job or an enterprise, a business from which they were temporarily absent due to illness, annual leave, full-paid maternity leave, parental leave, strike or another labour dispute, etc.

Unemployed are persons aged 15 to 74 who:

- did not work at all during the reference period;



- were actively seeking work within the preceding four weeks, including the reference one or have found a new job or business that is expected to start within 3 months following the reference period;
- were available to start working within two weeks following the reference period.

Long-term unemployed are persons who have been unemployed for one or more years.

Inactive population (persons not in the labour force) includes persons aged 15 and over who were neither employed, nor unemployed during the reference period.

Discouraged persons are persons not in the labour force who want to work but they do not actively look for a job, because they do not believe they will find one.

Activity rate - ratio between the economically active population and the total population of the same age group.

Employment rate - ratio between the employed population and the total population of the same age group.

Unemployment rate - ratio between the unemployed persons and the economically active population.

Long-term unemployment rate - ratio between the long-term unemployed persons and the economically active population.

Inactivity rate - ratio between the economically inactive population and the total population of the same age group.

The distribution of the employed persons by economic sector is done in accordance with the Classification of Economic Activities - 2008.

For the assessment of the results the current demographic data as of 31 December 2009 for the total population are used.

As in all sample surveys data from the labour force survey are subject of errors due to the sample (stochastic errors). The calculated relative standard errors for the main LFS indicators for the third quarter of 2010 are as follows:

- total number of employed - 1.2%;
- total number of unemployed - 3.5%;
- unemployment rate - 3.2%.

Because of the rounding of the figures some of the totals (rows and columns) are not equal to the sum of the components.



APPENDIX

Table 1

MAIN LABOUR MARKET INDICATORS,
FOURTH QUARTER OF 2009 AND 2010

	Fourth quarter 2009	Fourth quarter 2010	Change (fourth quarter 2010 minus fourth quarter 2009)
Total			
Activity rate (15 - 64) - %	66.5	66.6	0.1
Employed persons aged 15 and over - thousands	3171.6	3023.7	-147.9
Employed persons aged 15 - 64 - thousands	3124.4	2978.7	-145.7
Employed persons aged 15 - 24 - thousands	219.5	195.4	-24.1
Employed persons aged 20 - 64 - thousands	3100.9	2966.5	-134.4
Employed persons aged 55 - 64 - thousands	442.0	416.4	-25.6
Employment rate (15 and over) - %	48.2	46.3	-1.9
Employment rate (15 - 64) - %	61.2	59.0	-2.2
Employment rate (15 - 24) - %	22.7	20.9	-1.8
Employment rate (20 - 64) - %	67.5	64.7	-2.8
Employment rate (55 - 64) - %	45.7	42.9	-2.8
Unemployed persons - total - thousands	272.8	382.4	109.6
Unemployed persons aged 15 - 64 - thousands	271.7	380.2	108.5
Unemployed persons aged 15 - 24 - thousands	53.2	70.4	17.2
Unemployment rate - %	7.9	11.2	3.3
Unemployment rate (15 - 64) - %	8.0	11.3	3.3
Unemployment rate (15 - 24) - %	19.5	26.5	7.0
Long-term unemployment rate - %	3.4	5.9	2.5
Discouraged persons - total - thousands	223.7	228.0	4.3
Discouraged persons aged 15 - 64 - thousands	220.7	225.7	5.0



Table 1

**MAIN LABOUR MARKET INDICATORS,
FOURTH QUARTER OF 2009 AND 2010**

(Continued)

	Fourth quarter 2009	Fourth quarter 2010	Change (fourth quarter 2010 minus fourth quarter 2009)
Male			
Activity rate (15 - 64) - %	71.4	70.3	-1.1
Employed persons aged 15 and over - thousands	1691.6	1581.0	-110.6
Employed persons aged 15 - 64 - thousands	1657.2	1550.0	-107.2
Employed persons aged 15 - 24 - thousands	131.9	110.9	-21.0
Employed persons aged 20 - 64 - thousands	1644.3	1543.3	-101.0
Employed persons aged 55 - 64 - thousands	243.4	217.8	-25.6
Employment rate (15 and over) - %	53.6	50.5	-3.1
Employment rate (15 - 64) - %	65.3	61.7	-3.6
Employment rate (15 - 24) - %	26.5	23.2	-3.3
Employment rate (20 - 64) - %	72.0	67.7	-4.3
Employment rate (55 - 64) - %	53.5	48.5	-5.0
Unemployed persons - total - thousands	154.2	216.8	62.6
Unemployed persons aged 15 - 64 - thousands	154.1	215.7	61.6
Unemployed persons aged 15 - 24 - thousands	34.8	44.9	10.1
Unemployment rate - %	8.4	12.1	3.7
Unemployment rate (15 - 64) - %	8.5	12.2	3.7
Unemployment rate (15 - 24) - %	20.9	28.8	7.9
Long-term unemployment rate - %	3.5	6.2	2.7
Discouraged persons - total - thousands	122.2	127.8	5.6
Discouraged persons aged 15 - 64 - thousands	120.7	126.1	5.4



Table 1

**MAIN LABOUR MARKET INDICATORS,
FOURTH QUARTER OF 2009 AND 2010**

(Continued and end)

	Fourth quarter 2009	Fourth quarter 2010	Change (fourth quarter 2010 minus fourth quarter 2009)
Female			
Activity rate (15 - 64) - %	61.7	62.9	1.2
Employed persons aged 15 and over - thousands	1 480.0	1 442.7	-37.3
Employed persons aged 15 - 64 - thousands	1 467.2	1 428.7	-38.5
Employed persons aged 15 - 24 - thousands	87.6	84.5	-3.1
Employed persons aged 20 - 64 - thousands	1456.6	1423.3	-33.3
Employed persons aged 55 - 64 - thousands	198.6	198.6	0.0
Employment rate (15 and over) - %	43.2	42.4	-0.8
Employment rate (15 - 64) - %	57.2	56.4	-0.8
Employment rate (15 - 24) - %	18.6	18.6	0.0
Employment rate (20 - 64) - %	63.0	61.8	-1.2
Employment rate (55 - 64) - %	38.8	38.0	-0.8
Unemployed persons - total - thousands	118.6	165.6	47.0
Unemployed persons aged 15 - 64 - thousands	117.6	164.5	46.9
Unemployed persons aged 15 - 24 - thousands	18.3	25.5	7.2
Unemployment rate - %	7.4	10.3	2.9
Unemployment rate (15 - 64) - %	7.4	10.3	2.9
Unemployment rate (15 - 24) - %	17.3	23.2	5.9
Long-term unemployment rate - %	3.3	5.5	2.2
Discouraged persons - total - thousands	101.4	100.2	-1.2
Discouraged persons aged 15 - 64 - thousands	100.0	99.6	-0.4