

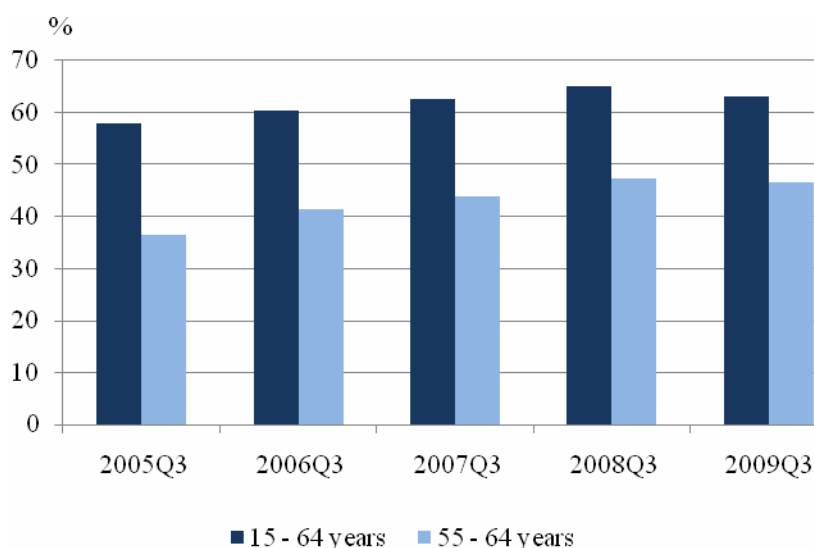
MAIN LABOUR FORCE SURVEY RESULTS THIRD QUARTER 2009

1. Main labour market indicators for the population aged 15 - 64

According to the results from the Labour Force Survey, carried out by the National Statistical Institute in the third quarter of 2009 **the number of economically active population aged 15 - 64** was 3 465.1 thousand, which represented 67.7% of the population in the same age group. The total activity rate recorded a fall by 0.8 percentage points in comparison with the third quarter of 2008. The activity rate was 72.4% for men and 63.0% for women.

In the third quarter of 2009 **the employment rate of population of 15 - 64 years of age** stood at 63.1%, by 1.9 percentage points lower than in the same quarter of the previous year. The employment rate achieved 67.4% for men and 58.9% for women, and during the respective period a fall is observed both for men and women (with 2.2 and 1.5 percentage points respectively).

Figure 1. Employment rate by age group, third quarter of the respective year



In the third quarter of 2009 the employment rate of older people (aged 55 - 64) stood at 46.7%, by 0.6 percentage points lower compared to the same quarter of the previous year. The female employment rate for this age group has been still growing and for the period concerned went up by 1.2 percentage points.

The **economically inactive population aged 15 - 64** was 1 654.6 thousand and had a relative share of 32.3% of the population in the same age group. Among all economically inactive population 701.1 thousand were men and 953.5 thousand were women. By sex the inactivity rate was 27.6% for men and 37.0% for women.

The **discouraged persons** aged 15 - 64 were 185.3 thousand or 11.2% of the economically inactive population of the same age group. In comparison with the third quarter of 2008 their number rose by 41.8 thousand.



2. Main characteristics of the employed persons aged 15 and over

In the third quarter of 2009 the total number of **employed persons aged 15 and over** was 3 280.0 thousand and had a relative share of 49.8% of population of the same age. Compared with the same period of 2008 their number decreased by 4.0% and their relative share - by 1.8 percentage points. Of the employed persons 1 744.6 thousand (53.2%) were males and 1 535.5 thousand (46.8%) were females.

Of the total number of working population 3.8% were employers, 8.1% - self-employed, 86.9% - employees and 1.2% - unpaid family workers. Of all employees 2 099.3 thousand (73.6%) were working in the private sector, and 752.6 thousand (26.4%) - in the public sector. The share of the females of all employees in the private sector was 45.3%, and of the employees in the public sector - 55.8%.

In the third quarter of 2009 more than a half of the total number of employed persons - 1 896.6 thousand (57.8%), were engaged in the Service sector, 1 138.4 thousand (34.7%) - in the Industry, and 245.1 thousand (7.5%) - in the Agriculture and forestry sector. Compared with the third quarter of 2008 the biggest drop in the number of employed persons was in the Industry - by 8.7%.

3. Unemployment

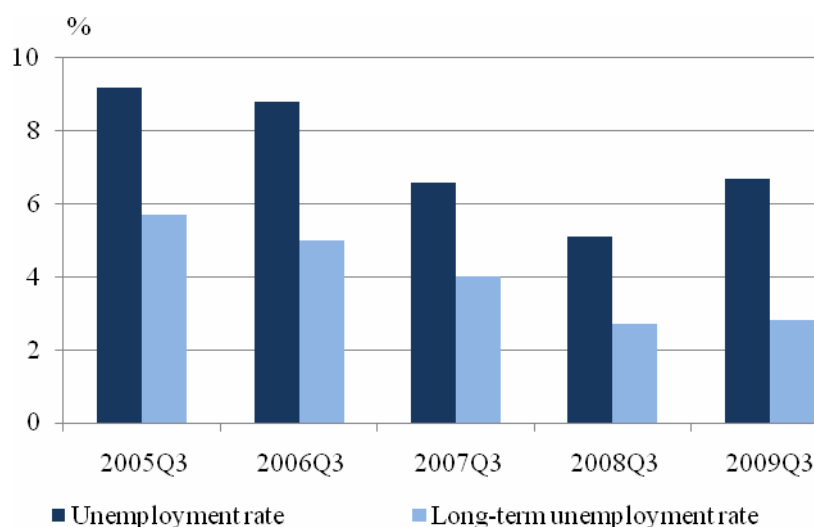
In the third quarter of 2009 the number of **unemployed persons** was 234.5 thousand, of which 127.0 thousand men and 107.5 thousand women. **The unemployment rate** was 6.7% and compared to the third quarter of 2008 rose by 1.6 percentage points.

The unemployment rate by gender did not disagree considerably and was 6.8% for men and 6.5% for women. For the period concerned unemployment went up for both men and women - by 1.8 and 1.2 percentage points respectively. The difference between the unemployment rates by place of residence remained significant. In the rural areas the unemployment rate was 9.7%, by 4.0 percentage points higher than that in the urban areas (5.7%).

The number of unemployed aged 15 - 24 was 48.1 thousand. The youth unemployment rate was 16.5%, 16.9% for men and 15.9% for women respectively.

The number of unemployed with duration of the unemployment less than a year increased by 54.9% compared to the third quarter of 2008 and reached 135.8 thousand in the third quarter of 2009, while the number of long-term unemployed (i.e. unemployed for duration of 12 months or over) for the period concerned remained almost the same. The number of long-term unemployed was 98.7 thousand, which is 42.1% of all unemployed. The long-term unemployment rate was 2.8%.

Figure 2. Unemployment rate and Long-term unemployment rate, third quarter of the respective year



In the third quarter of 2009 the number of unemployed with previous employment experience was 194.7 thousand (83.0% of the total number of unemployed), or 48.7 thousand up in comparison with the third quarter of 2008. The share of unemployed leaving the last job due to dismissal or redundancy (of all unemployed who had a job within previous eight years) rose from 43.1 to 52.7%.

METHODOLOGICAL NOTES

The Labour force survey is a continuous sample survey providing quarterly and annual data on the economic activity of the population aged 15 and over. The survey covers non-institutional households.

Reference period - the characteristics of each interviewee refer to his/her status during a defined calendar week.

Economically active population (labour force) comprises of all employed and unemployed persons.

Employed are persons aged 15 and over who during the reference period:

- performed some work for at least one hour for pay in cash or in kind or other income;
- did not work but had a job or an enterprise, a business from which they were temporarily absent due to illness, annual leave, full-paid maternity leave, parental leave, strike or another labour dispute, etc.

Unemployed are persons aged 15 to 74 who:

- did not work at all during the reference period;
- were actively seeking work within the preceding four weeks, including the reference one or have found a new job or business that is expected to start within 3 months following the reference period;

- were available to start working within two weeks following the reference period.

Long-term unemployed are persons who have been unemployed for one or more years.

Economically inactive population (persons not in the labour force) includes persons aged 15 and over who were neither employed, nor unemployed during the reference period.

Discouraged persons are persons not in the labour force who want to work but they do not actively look for a job, because they do not believe they will find one.

Activity rate - ratio between the economically active population and the total population of the same age group.

Employment rate - ratio between the employed population and the total population of the same age group.

Unemployment rate - ratio between the unemployed persons and the economically active population.

Long-term unemployment rate - ratio between the long-term unemployed persons and the economically active population.

Inactivity rate - ratio between the economically inactive population and the total population of the same age group.

The distribution of the employed persons by economic sector is done in accordance with the Classification of Economic Activities - 2008.

For the assessment of the results the current demographic data as of 31 December 2008 for the total population are used.

As in all sample surveys data from the labour force survey are subject of errors due to the sample (stochastic errors).

The calculated relative standard errors for the main LFS indicators for the third quarter of 2009 are as follows:

- total number of employed - 1.2%;
- total number of unemployed - 4.7%;
- unemployment rate - 4.5%.

Because of the rounding of the figures some of the totals (rows and columns) are not equal to the sum of the components.



APPENDIX

Table 1

MAIN LABOUR MARKET INDICATORS
THIRD QUARTER OF 2008 AND 2009

	Third quarter 2008	Third quarter 2009	Change (third quarter 2009 toward third quarter 2008)
Total			
Activity rate (15 - 64) - %	68.5	67.7	-0.8
Employed persons aged 15 and over - thousands	3417.3	3280.0	-137.3
Employed persons aged 15 - 64 - thousands	3360.3	3231.7	-128.6
Employed persons aged 15 - 24 - thousands	274.6	243.3	-31.3
Employed persons aged 55 - 64 - thousands	464.6	458.1	-6.5
Employment rate (15 and over) - %	51.6	49.8	-1.8
Employment rate (15 - 64) - %	65.0	63.1	-1.9
Employment rate (15 - 24) - %	27.5	25.1	-2.4
Employment rate (55 - 64) - %	47.3	46.7	-0.6
Unemployed persons - total - thousands	185.1	234.5	49.4
Unemployed persons aged 15 - 64 - thousands	184.4	233.4	49.0
Unemployed persons aged 15 - 24 - thousands	35.5	48.1	12.6
Unemployment rate - %	5.1	6.7	1.6
Unemployment rate (15 - 64) - %	5.2	6.7	1.5
Unemployment rate (15 - 24) - %	11.4	16.5	5.1
Long-term unemployment rate - %	2.7	2.8	0.1
Discouraged persons - total - thousands	144.5	186.5	42.0
Discouraged persons aged 15 - 64 - thousands	143.5	185.3	41.8



**MAIN LABOUR MARKET INDICATORS
THIRD QUARTER OF 2008 AND 2009**

(Continued)

	Third quarter 2008	Third quarter 2009	Change (third quarter 2009 toward third quarter 2008)
Male			
Activity rate (15 - 64) - %	73.3	72.4	-0.9
Employed persons aged 15 and over - thousands	1825.7	1744.6	-81.1
Employed persons aged 15 - 64 - thousands	1786.9	1712.6	-74.3
Employed persons aged 15 - 24 - thousands	155.2	142.4	-12.8
Employed persons aged 55 - 64 - thousands	262.4	249.0	-13.4
Employment rate (15 and over) - %	57.5	55.3	-2.2
Employment rate (15 - 64) - %	69.6	67.4	-2.2
Employment rate (15 - 24) - %	30.3	28.6	-1.7
Employment rate (55 - 64) - %	57.4	54.8	-2.6
Unemployed persons - total - thousands	96.8	127.0	30.2
Unemployed persons aged 15 - 64 - thousands	96.8	126.6	29.8
Unemployed persons aged 15 - 24 - thousands	23.5	29.0	5.5
Unemployment rate - %	5.0	6.8	1.8
Unemployment rate (15 - 64) - %	5.1	6.9	1.8
Unemployment rate (15 - 24) - %	13.1	16.9	3.8
Long-term unemployment rate - %	2.6	2.8	0.2
Discouraged persons - total - thousands	73.0	93.5	20.5
Discouraged persons aged 15 - 64 - thousands	72.3	92.7	20.4



**MAIN LABOUR MARKET INDICATORS
THIRD QUARTER OF 2008 AND 2009**

(Continued and end)

	Third quarter 2008	Third quarter 2009	Change (third quarter 2009 toward third quarter 2008)
Female			
Activity rate (15 - 64) - %	63.8	63.0	-0.8
Employed persons aged 15 and over - thousands	1591.6	1 535.5	-56.1
Employed persons aged 15 - 64 - thousands	1573.4	1 519.0	-54.4
Employed persons aged 15 - 24 - thousands	119.5	101.0	-18.5
Employed persons aged 55 - 64 - thousands	202.2	209.1	6.9
Employment rate (15 and over) - %	46.2	44.8	-1.4
Employment rate (15 - 64) - %	60.4	58.9	-1.5
Employment rate (15 - 24) - %	24.6	21.4	-3.2
Employment rate (55 - 64) - %	38.5	39.7	1.2
Unemployed persons - total - thousands	88.3	107.5	19.2
Unemployed persons aged 15 - 64 - thousands	87.6	106.8	19.2
Unemployed persons aged 15 - 24 - thousands	12.0	19.0	7.0
Unemployment rate - %	5.3	6.5	1.2
Unemployment rate (15 - 64) - %	5.3	6.6	1.3
Unemployment rate (15 - 24) - %	9.2	15.9	6.7
Long-term unemployment rate - %	2.9	2.8	-0.1
Discouraged persons - total - thousands	71.6	93.0	21.4
Discouraged persons aged 15 - 64 - thousands	71.2	92.6	21.4