



## 2009 LABOUR FORCE SURVEY

### MAIN RESULTS

- In 2009 **the economically active population** aged 15-64 was 3 441.5 thousand and accounted 67.2% of the population in the same age group. Compared to 2008 the activity rate (15-64) went down by 0.6 percentage points.

- The total **number of employed persons** was 3 253.6 thousand, of which 3 204.8 thousand aged 15-64.

- **The employment rate** (15-64) dropped by 1.4 percentage points in comparison with 2008 getting 62.6% in 2009.

- The male employment rate (15-64) was 66.9%, by 8.6 percentage points higher than the female employment rate (58.3%).

- The employment rate of older people (aged 55-64) declined by 1.7 percentage points for men and rose by 1.5 percentage points for women, while the total rate (46.1%) stood around its 2008 value.

- **Unemployed** in 2009 were 238.0 thousand persons, up by 19.2% compared with a year ago. Of the total number of unemployed 130.1 thousand (54.7%) were men and 107.9 thousand (45.3%) - women.

- **The unemployment rate** increased by 1.2 percentage points in comparison with 2008 to 6.8%. The raise of unemployment rate was higher for men (by 1.5 percentage points) than for women (by 0.8 percentage points).

- The youth unemployment rate (15-24) was 16.2%.

- The number of people **unemployed less than a year** rose by 39.6% compared to 2008 and achieved 134.6 thousand, representing 56.6% of all unemployed, while the number of long-term unemployed stood the same (103.4 thousand).

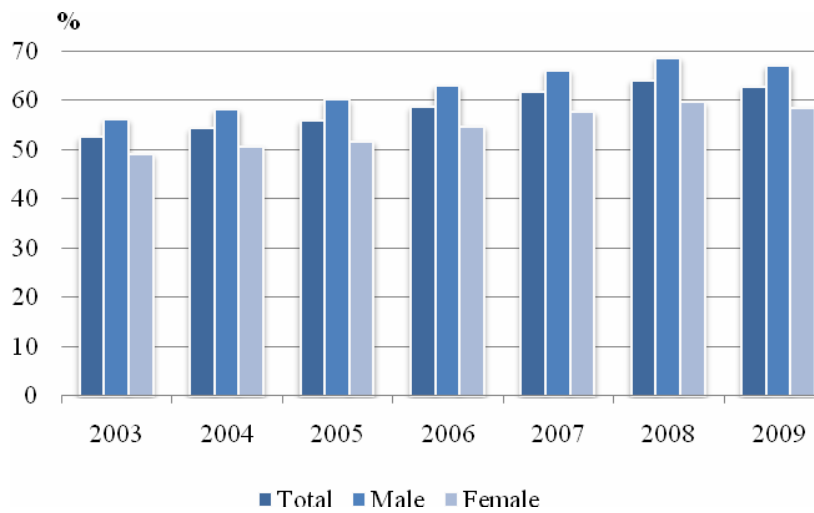
- The long-term unemployment rate was 3.0%, broken down by sex 2.9% for men and 3.1% for women respectively.

- The **economically inactive** were 1 680.3 persons aged 15-64, of which 712.0 men and 968.3 thousand women. The inactivity rate was 32.8%, 28.0% for men and 37.5% for women respectively.

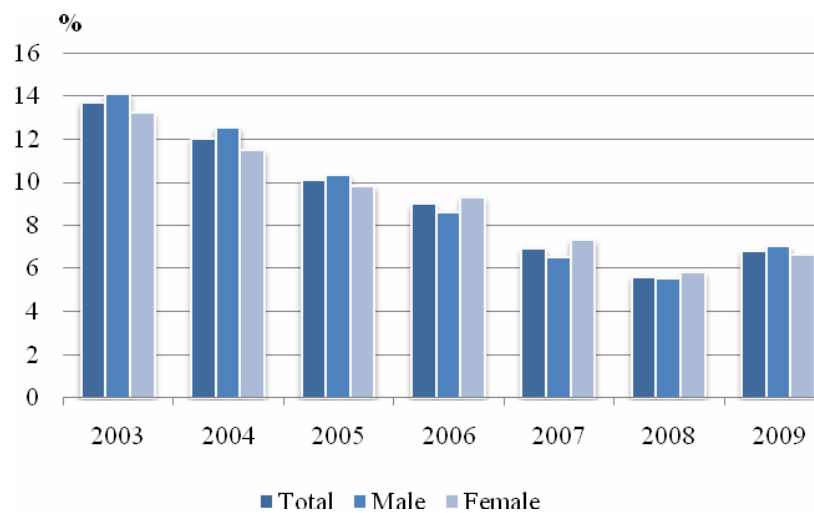
- The number of **discouraged persons** aged 15-64 was 184.2 thousand and registered an increase of 34.3 thousand compared to 2008.



**Figure 1. Employment rate (15 – 64) by sex**



**Figure 2. Unemployment rate by sex**





**MAIN LABOUR MARKET INDICATORS  
2008 AND 2009**

	2008	2009	Change (2009 toward 2008)
<b>Total</b>			
Activity rate (15 - 64) - %	67.8	67.2	-0.6
Employed persons aged 15 and over - thousands	3360.7	3253.6	-107.1
Employed persons aged 15 - 64 - thousands	3306.2	3204.8	-101.4
Employed persons aged 15 - 24 - thousands	262.6	240.0	-22.6
Employed persons aged 55 - 64 - thousands	453.1	452.0	-1.1
Employment rate (15 and over) - %	50.8	49.4	-1.4
Employment rate (15 - 64) - %	64.0	62.6	-1.4
Employment rate (15 - 24) - %	26.3	24.8	-1.5
Employment rate (55 - 64) - %	46.0	46.1	0.1
Unemployed persons - total – thousands	199.7	238.0	38.3
Unemployed persons aged 15 - 64 - thousands	198.5	236.7	38.2
Unemployed persons aged 15 - 24 - thousands	38.3	46.2	7.9
Unemployment rate - %	5.6	6.8	1.2
Unemployment rate (15 - 64) - %	5.7	6.9	1.2
Unemployment rate (15 - 24) - %	12.7	16.2	3.5
Long-term unemployment rate - %	2.9	3.0	0.1
Discouraged persons - total – thousands	151.9	186.4	34.5
Discouraged persons aged 15 - 64 – thousands	149.9	184.2	34.3



**MAIN LABOUR MARKET INDICATORS  
2008 AND 2009**

(Continued)

	2008	2009	Change (2009 toward 2008)
<b>Male</b>			
Activity rate (15 - 64) - %	72.5	72.0	-0.5
Employed persons aged 15 and over - thousands	1792.9	1732.3	-60.6
Employed persons aged 15 - 64 - thousands	1755.5	1698.7	-56.8
Employed persons aged 15 - 24 - thousands	150.1	139.0	-11.1
Employed persons aged 55 - 64 - thousands	253.3	244.5	-8.8
Employment rate (15 and over) - %	56.5	54.9	-1.6
Employment rate (15 - 64) - %	68.5	66.9	-1.6
Employment rate (15 - 24) - %	29.3	28.0	-1.3
Employment rate (55 - 64) - %	55.8	54.1	-1.7
Unemployed persons - total – thousands	103.9	130.1	26.2
Unemployed persons aged 15 - 64 - thousands	103.3	129.3	26.0
Unemployed persons aged 15 - 24 - thousands	23.9	30.0	6.1
Unemployment rate - %	5.5	7.0	1.5
Unemployment rate (15 - 64) - %	5.6	7.1	1.5
Unemployment rate (15 - 24) - %	13.7	17.8	4.1
Long-term unemployment rate - %	2.7	2.9	0.2
Discouraged persons - total – thousands	77.0	97.1	20.1
Discouraged persons aged 15 - 64 – thousands	75.6	95.8	20.2



**MAIN LABOUR MARKET INDICATORS  
2008 AND 2009**

(Continued and end)

	2008	2009	Change (2009 toward 2008)
<b>Female</b>			
Activity rate (15 - 64) - %	63.1	62.5	-0.6
Employed persons aged 15 and over - thousands	1567.8	1521.3	-46.5
Employed persons aged 15 - 64 - thousands	1550.8	1506.1	-44.7
Employed persons aged 15 - 24 - thousands	112.5	101.0	-11.5
Employed persons aged 55 - 64 - thousands	199.8	207.5	7.7
Employment rate (15 and over) - %	45.5	44.4	-1.1
Employment rate (15 - 64) - %	59.5	58.3	-1.2
Employment rate (15 - 24) - %	23.1	21.4	-1.7
Employment rate (55 - 64) - %	37.7	39.2	1.5
Unemployed persons - total - thousands	95.8	107.9	12.1
Unemployed persons aged 15 - 64 - thousands	95.1	107.4	12.3
Unemployed persons aged 15 - 24 - thousands	14.4	16.2	1.8
Unemployment rate - %	5.8	6.6	0.8
Unemployment rate (15 - 64) - %	5.8	6.7	0.9
Unemployment rate (15 - 24) - %	11.4	13.8	2.4
Long-term unemployment rate - %	3.1	3.1	0.0
Discouraged persons - total - thousands	74.9	89.3	14.4
Discouraged persons aged 15 - 64 - thousands	74.3	88.4	14.1



## METHODOLOGICAL NOTES

The Labour Force Survey (LFS) is a continuous sample survey providing quarterly and annual data on the economic activity of the population aged 15 and over. The survey covers non-institutional households.

**Reference period** - the characteristics of each interviewee refer to his/her status during a defined calendar week.

**Economically active population** (labour force) comprises of all employed and unemployed persons.

**Employed** are persons aged 15 and over who during the reference period:

- performed some work for at least one hour for pay in cash or in kind or other income;
- did not work but had a job or an enterprise, a business from which they were temporarily absent due to illness, annual leave, full-paid maternity leave, parental leave, strike or another labour dispute, etc.

**Unemployed** are persons aged 15 to 74 who:

- did not work at all during the reference period;
- were actively seeking work within the preceding four weeks, including the reference one or have found a new job or business that is expected to start within 3 months following the reference period;
- were available to start working within two weeks following the reference period.

**Long-term unemployed** are persons who have been unemployed for one or more years.

**Economically inactive population** (persons not in the labour force) includes persons aged 15 and over who were neither employed, nor unemployed during the reference period.

**Discouraged persons** are persons not in the labour force who want to work but they do not actively look for a job, because they do not believe they will find one.

**Activity rate** - ratio between the economically active population and the total population of the same age group.

**Employment rate** - ratio between the employed population and the total population of the same age group.

**Unemployment rate** - ratio between the unemployed persons and the economically active population.



**Long-term unemployment rate** - ratio between the long-term unemployed persons and the economically active population.

**Inactivity rate** - ratio between the economically inactive population and the total population of the same age group.

For the assessment of the results the current demographic data as of 31 December 2008 for the total population are used.

Average annual data are calculated on the basis of full quarterly samples of households observed in the year.

Because of the rounding of the figures some of the totals (rows and columns) are not equal to the sum of the components.