



PRODUCER PRICE INDICES IN INDUSTRY¹

FEBRUARY 2012

1. Producer Price Indices on Domestic Market²

Producer Price Index on Domestic Market in February 2012 increased by 0.4% compared to the previous month. The domestic prices rose in the mining and quarrying industry by 2.5%, in the manufacturing by 0.2% and in the electricity, gas, steam and air conditioning supply by 0.5%.

In the manufacturing, the more significant prices increases compared to the previous month were seen in the manufacture of textiles by 2.7%, in the manufacture of basic metals by 1.5%, and in the manufacture of motor vehicles, trailers and semi-trailers 1.4%.

Producer Price Index on Domestic Market in February 2012 grew by 4.6% compared to the same month of 2011. The domestic prices increased in the manufacturing by 5.0% and in the electricity, gas, steam and air conditioning supply by 5.7%, while in the mining and quarrying industry the prices went down by 3.5%.

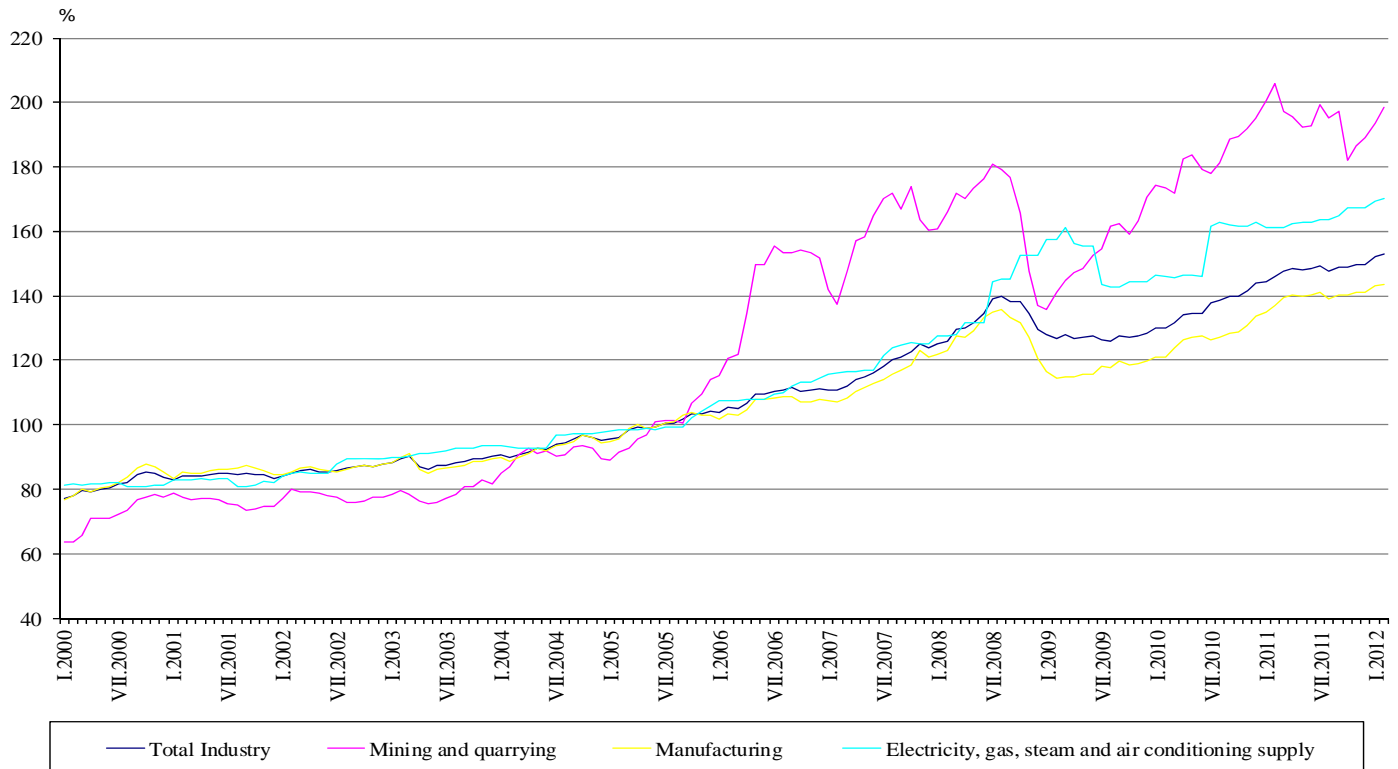
In the manufacturing compared to the same month of 2011, the price increase was registered in the manufacture of chemical and chemical products by 9.3%, in the repair and installation of machinery and equipment by 6.9%, in the the manufacture textiles by 4.8%. The prices reductions were seen in the manufacture of basic metals by 2.9% and in the manufacture of other non-metallic mineral products by 2.2%.

¹**Producer Price Indices** measure the average change in the prices of industrial products, which are produced and sold by Bulgarian enterprises. They can be considered as an early measure of the current inflation process in the economy and also they can be used for international comparisons. Information for calculation of Producer Price Indices is received on the bases of monthly surveys on producer prices of industrial products, sold on domestic market and on industrial products sold on non-domestic market. Producer price surveys are based on constant sample of groups of products, and that sample is representative for total industrial production.

² **Producer Price Indices on domestic market** are calculated at constant base (2005) weighed with turnover structure on domestic market.



**Figure 1. Producer Price Indices on Domestic Market in Industry
(2005 = 100)**



2. Total Producer Price Indices in Industry³

Total Producer Price Index in Industry in February 2012 increased by 0.5% compared to the previous month. The higher prices were registered in the mining and quarrying industry by 4.5%, in the manufacturing by 0.3% and in the electricity, gas, steam and air conditioning supply by 0.4%.

In the manufacturing, more significant prices increases were seen in the manufacture of textiles by 4.6% and in the manufacture of beverages by 0.9%.

Total Producer Price Index in February 2012 grew by 3.6% comparing to the same month of 2011.

In the manufacturing, the prices rose by 3.3% as compared to February 2011. More significant prices increases were seen in the manufacture of textiles by 6.8%, in the manufacture of chemicals and chemical products and in the repair and installation of machinery and equipment by 6.2%, while the producer prices went down in the manufacture of basic metals by 7.2% and in the manufacture of other non-metallic mineral products by 0.9%.

³ Total Producer Price Index is calculated from Producer Price Index on Domestic Market and Producer Price Index on Non-domestic Market weighted with the turnover structure on domestic and on non-domestic market to the total value of turnover in the base year 2005.



**Figure 2. Total Producer Price Indices in Industry
(2005 = 100)**

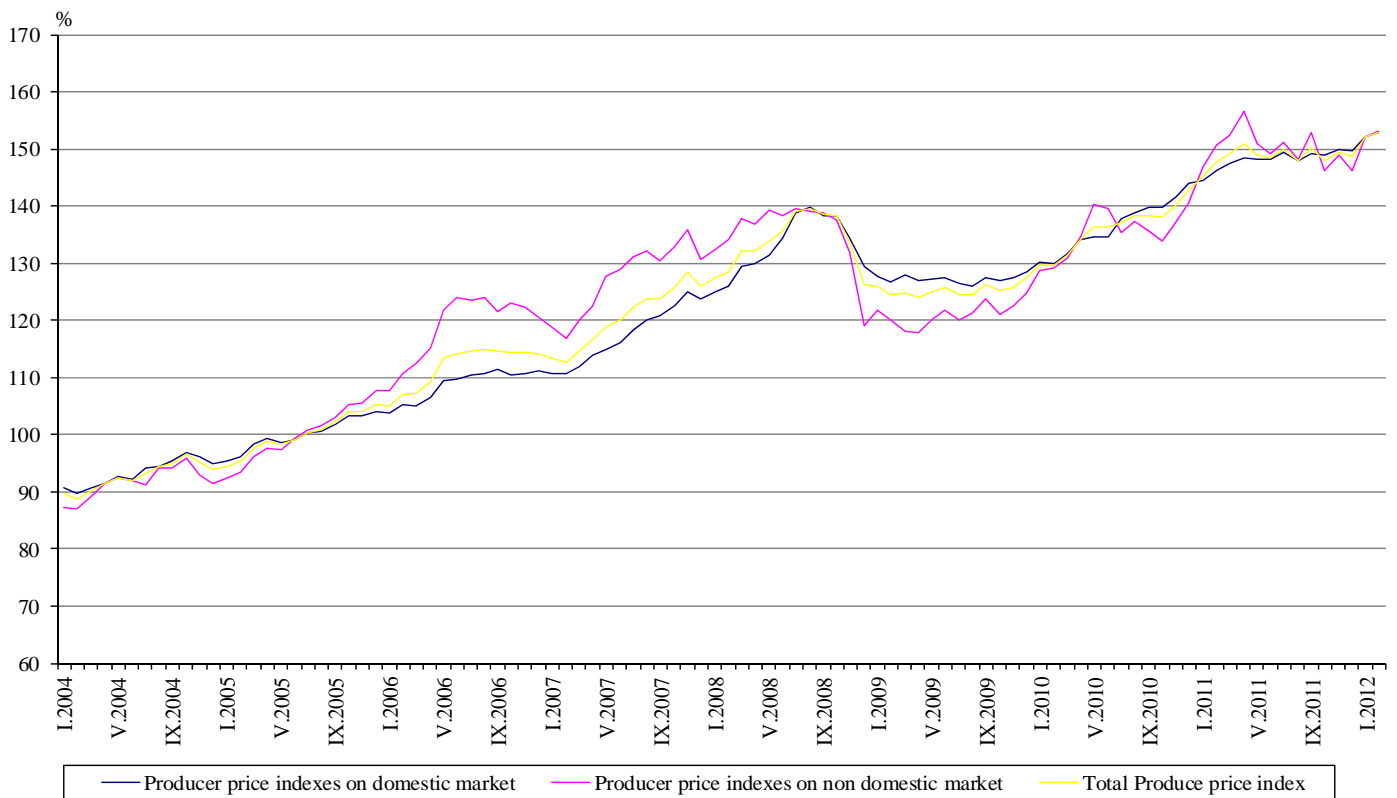




Table 1

Producer Price Indices on Domestic Market in February 2012⁴

Economic activities	2005=100	The previous month=100	The same month of 2011=100
Industry	152.8	100.4	104.6
Mining and quarrying	198.6	102.5	96.5
of which:			
Mining of coal and lignite	159.4	99.5	100.7
Mining of metal ores	278.6	104.6	89.5
Other mining and quarrying	136.2	100.0	104.4
Manufacturing	143.6	100.2	105.0
of which:			
Manufacture of food products	158.4	100.0	103.6
Manufacture of beverages	145.8	101.0	102.8
Manufacture of tobacco products	102.2	99.9	104.1
Manufacture of textiles	141.3	102.7	104.8
Manufacture of wearing apparel	130.5	100.3	104.5
Manufacture of leather and related products	128.6	100.7	101.3
Manufacture of wood and of products of wood and cork, except furniture; manufacture of articles of straw and plaiting materials	121.9	99.6	103.9
Manufacture of paper and paper products	131.2	100.2	103.9
Printing and reproduction of recorded media	116.3	100.5	100.1
Manufacture of chemicals and chemical products	152.3	99.2	109.3
Manufacture of basic pharmaceutical products and pharmaceutical preparations	111.2	100.4	102.3
Manufacture of rubber and plastic products	116.1	100.0	104.5
Manufacture of other non-metallic mineral products	119.7	98.6	97.8
Manufacture of basic metals	146.8	101.5	97.1
Manufacture of fabricated metal products, except machinery and equipment	122.2	99.5	101.6
Manufacture of computer, electronic and optical products	112.4	99.9	99.6
Manufacture of electrical equipment	135.2	100.1	99.6
Manufacture of machinery and equipment n.e.c.	132.5	99.2	103.3
Manufacture of motor vehicles, trailers and semi-trailers	123.7	101.4	101.5
Manufacture of other transport equipment	111.3	100.6	99.6
Manufacture of furniture	118.4	100.0	100.8
Other manufacturing	112.9	100.1	100.5
Repair and installation of machinery and equipment	146.2	99.9	106.9
Electricity, gas, steam and air conditioning supply	170.2	100.5	105.7
Electricity, gas, steam and air conditioning supply	170.2	100.5	105.7

⁴ In the tables are not included data that according to the Law on Statistics are confidential and in this way they are statistical secrecy.



Table 2

Total Producer Price Indices in February 2012⁵

Economic activities	2005=100	The previous month=100	The same month of 2011=100
Industry	152.9	100.5	103.6
Mining and quarrying	218.7	104.5	100.3
of which:			
Mining of coal and lignite	159.4	99.5	100.7
Mining of metal ores	303.0	107.4	97.9
Other mining and quarrying	135.0	99.9	104.2
Manufacturing	145.9	100.3	103.3
of which:			
Manufacture of food products	154.7	100.1	102.5
Manufacture of beverages	142.6	100.9	102.6
Manufacture of tobacco products	103.7	99.9	103.1
Manufacture of textiles	135.6	104.6	106.8
Manufacture of wearing apparel	135.7	99.4	102.9
Manufacture of leather and related products	128.0	100.4	104.0
Manufacture of wood and of products of wood and cork, except furniture; manufacture of articles of straw and plaiting materials	119.6	100.1	104.1
Manufacture of paper and paper products	129.6	100.1	100.4
Printing and reproduction of recorded media	116.0	100.5	100.5
Manufacture of chemicals and chemical products	148.3	97.8	106.2
Manufacture of basic pharmaceutical products and pharmaceutical preparations	128.8	99.4	100.7
Manufacture of rubber and plastic products	120.0	100.0	104.3
Manufacture of other non-metallic mineral products	121.0	98.7	99.1
Manufacture of basic metals	168.5	99.4	92.8
Manufacture of fabricated metal products, except machinery and equipment	121.9	99.3	101.8
Manufacture of computer, electronic and optical products	110.8	99.4	100.2
Manufacture of electrical equipment	133.2	99.9	99.9
Manufacture of machinery and equipment n.e.c.	125.6	99.6	103.9
Manufacture of motor vehicles, trailers and semi-trailers	112.7	99.8	100.9
Manufacture of other transport equipment	115.1	99.6	102.9
Manufacture of furniture	116.3	100.0	100.5
Other manufacturing	117.0	100.0	103.5
Repair and installation of machinery and equipment	140.2	99.8	106.2
Electricity, gas, steam and air conditioning supply	169.2	100.4	105.7
Electricity, gas, steam and air conditioning supply	169.2	100.4	105.7

⁵ In the tables are not included data that according to the Law on Statistics are confidential and in this way they are statistical secrecy.