



PRODUCER PRICE INDICES IN INDUSTRY¹

NOVEMBER 2010

1. Producer Price Indices on Domestic Market²

Producer Price Index on Domestic Market in November 2010 rose by 1.1% comparing to the previous month. The domestic prices increased in the mining and quarrying industry by 1.4%, and in the manufacturing by 1.7%, while in the electricity, gas, steam and air conditioning supply the prices remained at the level of the previous month.

In the manufacturing, the more significant prices increase comparing to the previous month were seen in the manufacture of the basic metals by 3.4%, in the repair and installation of machinery and equipment by 1.7%, in the manufacture of food products and in the manufacture of machinery and equipment by 1.4%.

Producer Price Index on Domestic Market in November 2010 grew by 11.1% compared to the same month of 2009. The domestic prices increased in the mining and quarrying industry by 17.7%, in the manufacturing by 10.1% and in the electricity, gas, steam and air conditioning supply by 12.1%.

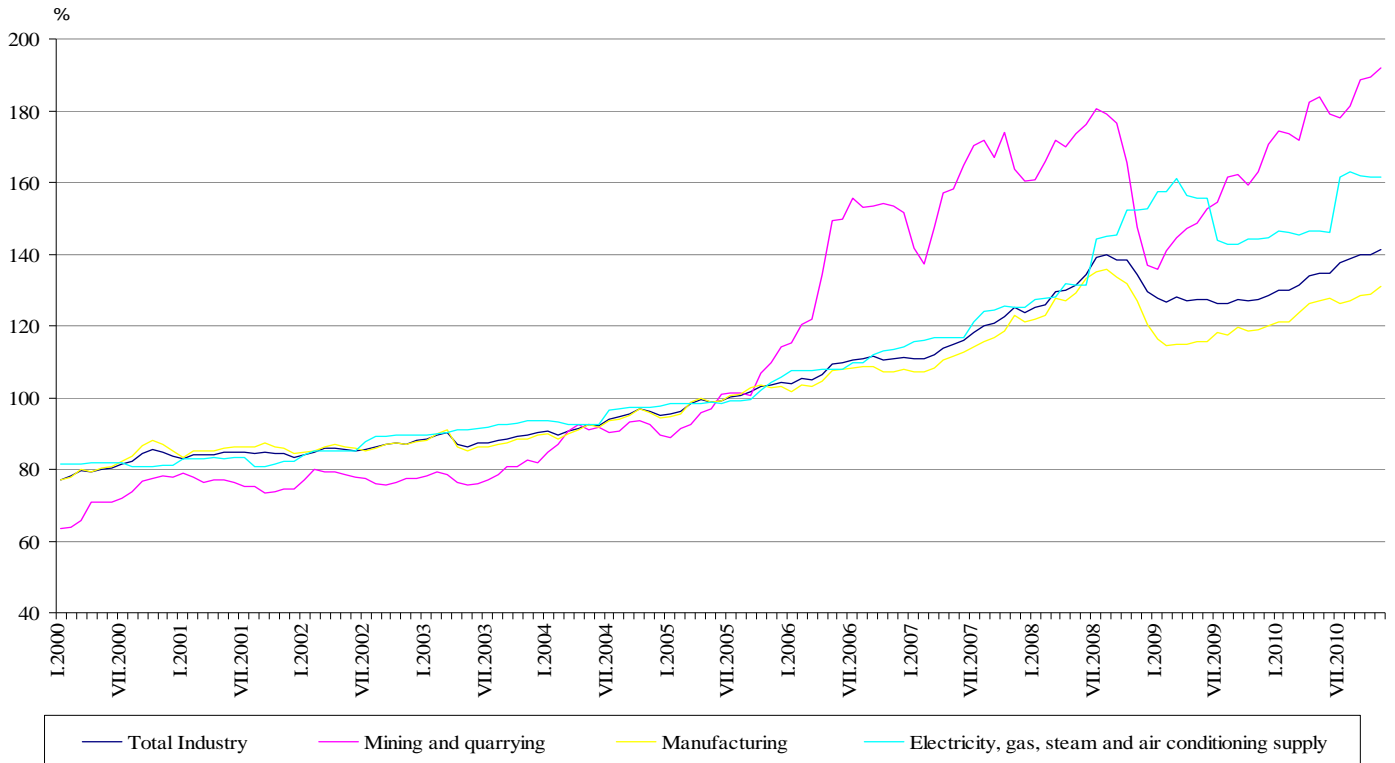
In the manufacturing compared to the same month of 2009, the prices increase was registered in the manufacture of basic metals by 19.6%, in the repair and installation of machinery and equipment by 7.7%, in the manufacture of food products and in the manufacture of paper and paper products by 7.4%. The prices reduction was seen in the manufacture of other non-metallic mineral products by 2.9%, and in the manufacture of wood and of products of wood and cork, except furniture by 1.1%.

¹**Producer Price Indices** measure the average change in the prices of industrial products, which are produced and sold by Bulgarian enterprises. They can be considered as an early measure of the current inflation process in the economy and also they can be used for international comparisons. Information for calculation of Producer Price Indices is received on the bases of monthly surveys on producer prices of industrial products, sold on domestic market and on industrial products sold on non-domestic market. Producer price surveys are based on constant sample of groups of products, and that sample is representative for total industrial production.

² **Producer Price Indices on domestic market** are calculated at constant base (2005) weighed with turnover structure on domestic market.



**Figure 1. Producer Price Indices on Domestic Market in Industry
(2005 = 100)**



2. Total Producer Price Indices in Industry³

Total Producer Price Index in Industry in November 2010 increased by 1.5% compared to the previous month. The higher prices were registered in the mining and quarrying industry by 1.5%, in the manufacturing by 1.9%, and in the electricity, gas, steam and air conditioning supply by 0.1%.

In the manufacturing, more significant prices increase was seen in the manufacture of wearing apparel and in the manufacture of basic metals by 2.9%, as well as in the in the manufacture of paper and paper products by 1.9%.

Total Producer Price Index in November 2010 grew by 11.3% comparing to the same month of 2009.

In the manufacturing, the prices rose by 10.5% as compared to November 2009. More significant prices increases were seen in the manufacture of basic metals by 21.6%, in the manufacture of motor vehicles, trailers and semi-trailers by 15.7%, and in the manufacture of leather and related products by 15.4%, while

³ Total Producer Price Index is calculated from Producer Price Index on Domestic Market and Producer Price Index on Non-domestic Market weighted with the turnover structure on domestic and on non-domestic market to the total value of turnover in the base year 2005.



the producer prices went down in the manufacture of other non-metallic mineral products by 2.9%, and in the manufacture of chemicals and chemical products 1.4%.

**Figure 2. Total Producer Price Indices in Industry
(2005 = 100)**

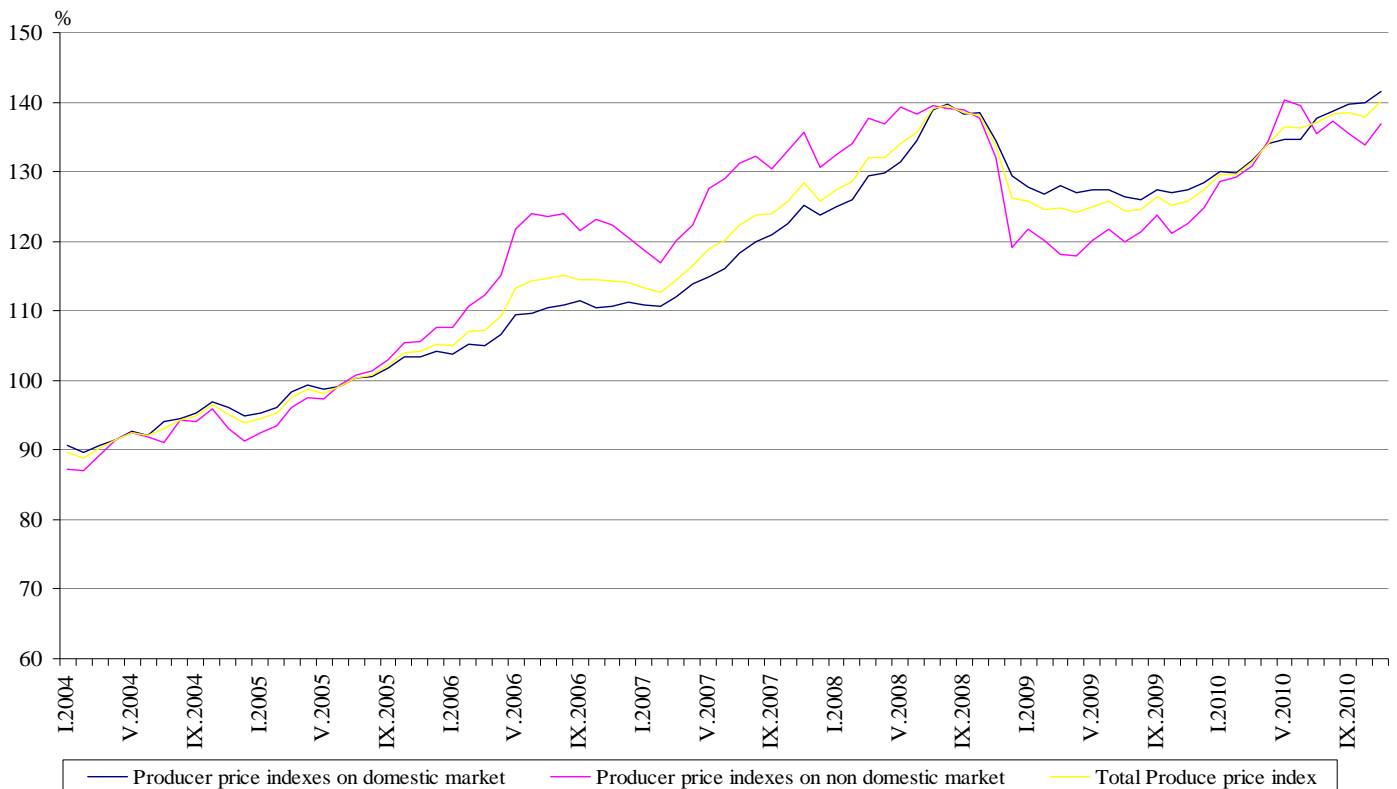




Table 1

Producer Price Indices on Domestic Market in November 2010⁴

Economic activities	2005=100	The previous month=100	The same month of 2009=100
Industry	141.5	101.1	111.1
Mining and quarrying	191.9	101.4	117.7
of which:			
Mining of coal and lignite	156.6	97.6	98.0
Mining of metal ores	273.7	103.9	139.7
Other mining and quarrying	129.4	100.0	97.8
Manufacturing	130.8	101.7	110.1
of which:			
Manufacture of food products	144.6	101.4	107.4
Manufacture of beverages	141.6	99.8	101.5
Manufacture of tobacco products	96.7	100.0	106.7
Manufacture of textiles	125.3	100.8	105.5
Manufacture of wearing apparel	123.2	100.6	102.1
Manufacture of leather and related products	126.4	100.9	106.2
Manufacture of wood and of products of wood and cork, except furniture; manufacture of articles of straw and plaiting materials	116.0	100.1	98.9
Manufacture of paper and paper products	123.9	101.3	107.4
Printing and reproduction of recorded media	114.6	100.0	102.3
Manufacture of chemicals and chemical products	132.5	100.6	100.8
Manufacture of basic pharmaceutical products and pharmaceutical preparations	109.7	100.2	103.1
Manufacture of rubber and plastic products	110.9	100.5	102.9
Manufacture of other non-metallic mineral products	123.6	100.1	97.1
Manufacture of basic metals	138.5	103.4	119.6
Manufacture of fabricated metal products, except machinery and equipment	119.3	101.0	100.4
Manufacture of computer, electronic and optical products	112.6	100.0	101.4
Manufacture of electrical equipment	132.3	100.2	103.0
Manufacture of machinery and equipment n.e.c.	126.6	101.4	101.8
Manufacture of motor vehicles, trailers and semi-trailers	121.8	100.1	100.5
Manufacture of other transport equipment	111.7	100.0	102.1
Manufacture of furniture	117.3	100.0	100.1
Other manufacturing	112.6	100.1	100.9
Repair and installation of machinery and equipment	134.6	101.7	107.7
Electricity, gas, steam and air conditioning supply	161.6	100.0	112.1
Electricity, gas, steam and air conditioning supply	161.6	100.0	112.1

⁴ In the tables are not included data that according to the Law on Statistics are confidential and in this way they are statistical secrecy.



Table 2

Total Producer Price Indices in November 2010⁵

Economic activities	2005=100	The previous month=100	The same month of 2009=100
Industry	140.0	101.5	111.3
Mining and quarrying	190.4	101.5	121.5
of which:			
Mining of coal and lignite	156.6	97.6	98.0
Mining of metal ores	247.0	103.3	142.4
Other mining and quarrying	128.7	100.7	99.4
Manufacturing	132.6	101.9	110.5
of which:			
Manufacture of food products	143.4	101.5	107.6
Manufacture of beverages	138.4	99.9	101.2
Manufacture of tobacco products	98.9	100.0	106.5
Manufacture of textiles	119.5	100.9	107.9
Manufacture of wearing apparel	131.0	102.9	104.2
Manufacture of leather and related products	122.4	101.4	115.4
Manufacture of wood and of products of wood and cork, except furniture; manufacture of articles of straw and plaiting materials	113.5	100.1	99.6
Manufacture of paper and paper products	128.0	101.9	112.6
Printing and reproduction of recorded media	113.9	100.0	102.5
Manufacture of chemicals and chemical products	136.1	100.6	98.6
Manufacture of basic pharmaceutical products and pharmaceutical preparations	128.4	100.2	105.7
Manufacture of rubber and plastic products	114.0	100.4	101.8
Manufacture of other non-metallic mineral products	123.0	100.1	97.1
Manufacture of basic metals	151.7	102.9	121.6
Manufacture of fabricated metal products, except machinery and equipment	118.7	100.9	102.8
Manufacture of computer, electronic and optical products	109.7	100.3	106.7
Manufacture of electrical equipment	130.7	100.2	104.0
Manufacture of machinery and equipment n.e.c.	119.5	100.7	100.7
Manufacture of motor vehicles, trailers and semi-trailers	110.0	100.8	115.7
Manufacture of other transport equipment	111.2	100.7	112.9
Manufacture of furniture	115.9	100.1	100.8
Other manufacturing	112.3	101.1	103.9
Repair and installation of machinery and equipment	130.1	101.5	106.5
Electricity, gas, steam and air conditioning supply	160.7	100.1	111.9
Electricity, gas, steam and air conditioning supply	160.7	100.1	111.9

⁵ In the tables are not included data that according to the Law on Statistics are confidential and in this way they are statistical secrecy.