



PRODUCER PRICE INDICES IN INDUSTRY¹

FEBRUARY 2010

1. Producer Price Indices on Domestic Market²

Producer Price Index on Domestic Market in February 2010 fell by 0.2% compared to the previous month. The domestic prices decreased in the mining and quarrying industry by 0.5%, in the manufacturing by 0.1% and in the electricity, gas, steam and air conditioning supply by 0.2%.

In the manufacturing, the more significant price decreases comparing to the previous month were seen in the manufacture of basic metals by 3.7%, in the manufacture of fabricated metal products, except machinery and equipment and in the manufacture of machinery and equipment by 1.7%. The prices increased in the manufacture of basic pharmaceutical products and pharmaceutical preparations by 1.1%, in the manufacture of chemicals and chemical products and in the manufacture of electrical equipment by 0.7%.

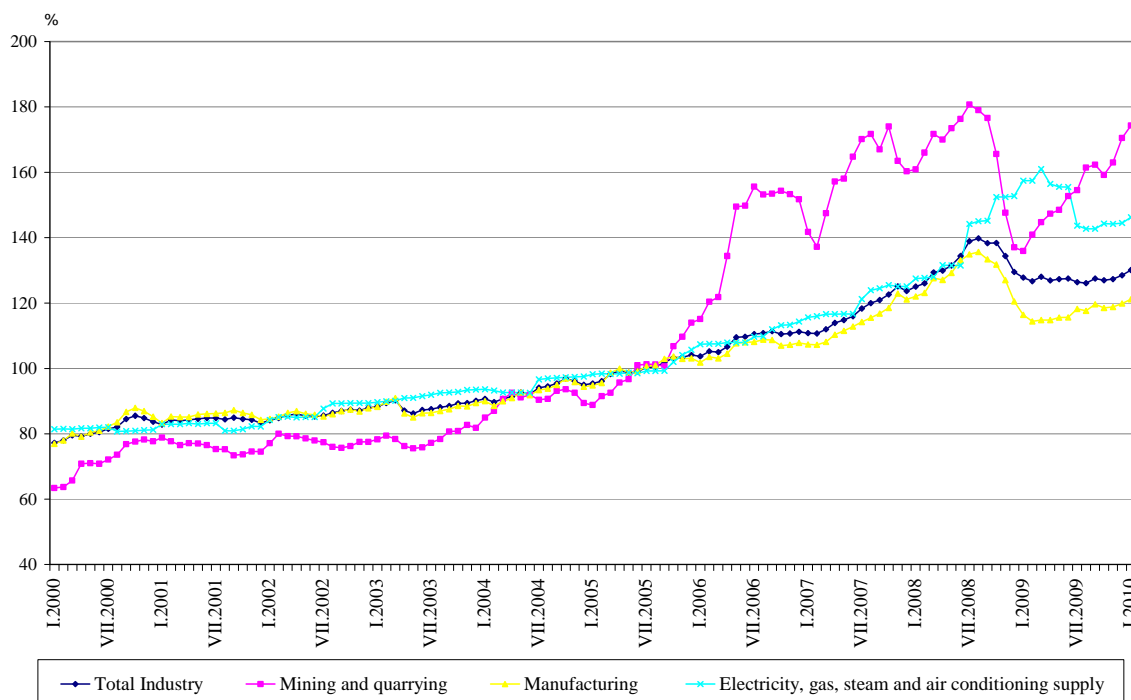
Producer Price Index on Domestic Market in February 2010 rose 2.5% compared to the same month of 2009. The domestic prices increased in the mining and quarrying industry by 23.2% and in the manufacturing by 5.7% while in the electricity, gas, steam and air conditioning supply the prices fell by 7.3%.

In the manufacturing compared to the same month of 2009, the price increase was registered in the in the manufacture of tobacco products by 23.3%, in the manufacture of basic metals by 16.2%, in the manufacture of other transport equipment by 6.1%. The price decrease was seen in the manufacture of wood and of products of wood, except furniture by 9.1%, in the manufacture of other non-metallic mineral products by 5.0%, in the manufacture of fabricated metal products, except machinery and equipment by 4.7%.

¹**Producer Price Indices** measure the average change in the prices of industrial products, which are produced and sold by Bulgarian enterprises. They can be considered as an early measure of the current inflation process in the economy and also they can be used for international comparisons. Information for calculation of Producer Price Indices is received on the bases of monthly surveys on producer prices of industrial products, sold on domestic market and on industrial products sold on non-domestic market. Producer price surveys are based on constant sample of groups of products, and that sample is representative for total industrial production.

² Producer Price Indices on domestic market are calculated at constant base (2005) weighed with turnover structure on domestic market.

Producer Price Indices on Domestic Market in Industry (2005 = 100)



2. Total Producer Price Indices in Industry³

Total Producer Price Index in Industry in February 2010 remained at the same level over the previous month. The higher prices were registered in the mining and quarrying industry by 0.2%, in the manufacturing by 0.1%, while in the electricity, gas, steam and air conditioning supply the prices fell by 0.3%.

In the manufacturing, more significant price increase was seen in the manufacture of other transport equipment by 3.4%, in the manufacture of leather and related products by 2.9%, in the manufacture of paper and paper products by 2.4%.

Total Producer Price Index in February 2010 increased by 4.1% comparing to the same month of 2009.

In the manufacturing, the prices rose 8.2% as compared to February 2009. More significant price increases were seen in the manufacture of basic metals by 35.8%, in the manufacture of tobacco products by 18.7% and in the manufacture of chemicals and chemical products by 10.4%, while the producer prices decreased in the manufacture of wood and of products of wood, except furniture by 8.2%, in the manufacture of other non-metallic mineral products by 4.9% and in the manufacture of fabricated metal products, except machinery and equipment by 4.4%.

³ Total Producer Price Index is calculated from Producer Price Index on Domestic Market and Producer Price Index on Non-domestic Market weighted with the turnover structure on domestic and on non-domestic market to the total value of turnover in the base year 2005.

Total Producer Price Indices in Industry (2005 = 100)

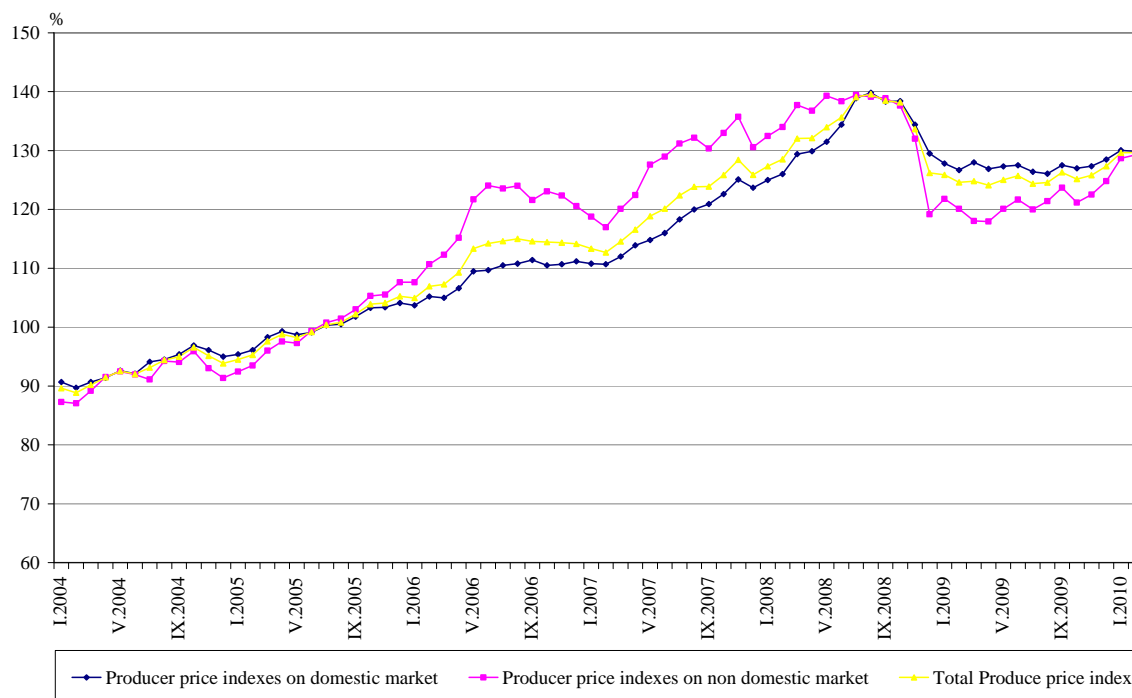


Table 1

Producer Price Indices on Domestic Market in February 2010⁴

Economic activities	2005=100	The previous month=100	The same month of 2009=100
Industry	129.9	99.8	102.5
Mining and quarrying	173.5	99.5	123.2
of which:			
Mining of coal and lignite	157.4	98.5	101.2
Mining of metal ores	227.2	99.0	188.5
Other mining and quarrying	131.0	100.1	94.3
Manufacturing	121.0	99.9	105.7
of which:			
Manufacture of food products	134.5	99.8	96.9
Manufacture of beverages	140.6	100.1	103.4
Manufacture of tobacco products	109.8	99.6	123.3
Manufacture of textiles	121.9	100.5	103.2
Manufacture of wearing apparel	121.6	100.5	101.5
Manufacture of leather and related products	119.3	100.3	104.1
Manufacture of wood and of products of wood and cork, except furniture; manufacture of articles of straw and plaiting materials	116.6	100.6	90.9
Manufacture of paper and paper products	116.7	100.6	98.8
Printing and reproduction of recorded media	112.1	100.0	102.1
Manufacture of chemicals and chemical products	130.2	100.7	104.6
Manufacture of basic pharmaceutical products and pharmaceutical preparations	107.9	101.1	102.0
Manufacture of rubber and plastic products	107.7	99.8	100.5
Manufacture of other non-metallic mineral products	126.7	99.7	95.0
Manufacture of basic metals	115.1	96.3	116.2
Manufacture of fabricated metal products, except machinery and equipment	115.2	98.3	95.3
Manufacture of computer, electronic and optical products	112.0	100.2	101.1
Manufacture of electrical equipment	130.1	100.7	102.7
Manufacture of machinery and equipment n.e.c.	122.5	98.3	99.1
Manufacture of motor vehicles, trailers and semi-trailers	121.4	100.0	100.0
Manufacture of other transport equipment	110.6	100.2	106.1
Manufacture of furniture	117.3	100.1	101.9
Other manufacturing	111.8	100.1	101.0
Repair and installation of machinery and equipment	127.7	99.9	96.2
Electricity, gas, steam and air conditioning supply	146.0	99.8	92.7
Electricity, gas, steam and air conditioning supply	146.0	99.8	92.7

⁴ In the tables are not included data that according to the Law on Statistics are confidential and in this way they are statistical secrecy.

Total Producer Price Indices in February 2010⁵

Economic activities	2005=100	The previous month=100	The same month of 2009=100
Industry	129.7	100.0	104.1
Mining and quarrying	167.0	100.2	107.0
of which:			
Mining of coal and lignite	157.4	98.5	101.2
Mining of metal ores	197.8	100.3	119.8
Other mining and quarrying	128.6	100.1	95.2
Manufacturing	124.0	100.1	108.2
of which:			
Manufacture of food products	134.2	100.0	96.7
Manufacture of beverages	137.5	100.0	102.9
Manufacture of tobacco products	110.1	99.8	118.7
Manufacture of textiles	114.0	100.8	100.6
Manufacture of wearing apparel	125.4	100.0	99.2
Manufacture of leather and related products	112.1	102.9	99.7
Manufacture of wood and of products of wood and cork, except furniture; manufacture of articles of straw and plaiting materials	113.4	100.2	91.8
Manufacture of paper and paper products	117.7	102.4	100.4
Printing and reproduction of recorded media	111.6	100.2	101.8
Manufacture of chemicals and chemical products	140.2	100.9	110.4
Manufacture of basic pharmaceutical products and pharmaceutical preparations	124.0	101.8	103.6
Manufacture of rubber and plastic products	112.0	99.9	100.6
Manufacture of other non-metallic mineral products	125.7	99.6	95.1
Manufacture of basic metals	137.3	99.1	135.8
Manufacture of fabricated metal products, except machinery and equipment	114.2	99.5	95.6
Manufacture of computer, electronic and optical products	106.9	101.6	98.8
Manufacture of electrical equipment	127.1	100.7	103.9
Manufacture of machinery and equipment n.e.c.	117.0	98.8	99.0
Manufacture of motor vehicles, trailers and semi-trailers	99.2	101.2	98.3
Manufacture of other transport equipment	105.6	103.4	99.7
Manufacture of furniture	115.9	100.3	98.6
Other manufacturing	108.4	101.0	99.7
Repair and installation of machinery and equipment	124.4	99.9	96.8
Electricity, gas, steam and air conditioning supply	145.3	99.7	91.0
Electricity, gas, steam and air conditioning supply	145.3	99.7	91.0

⁵ In the tables are not included data that according to the Law on Statistics are confidential and in this way they are statistical secrecy.