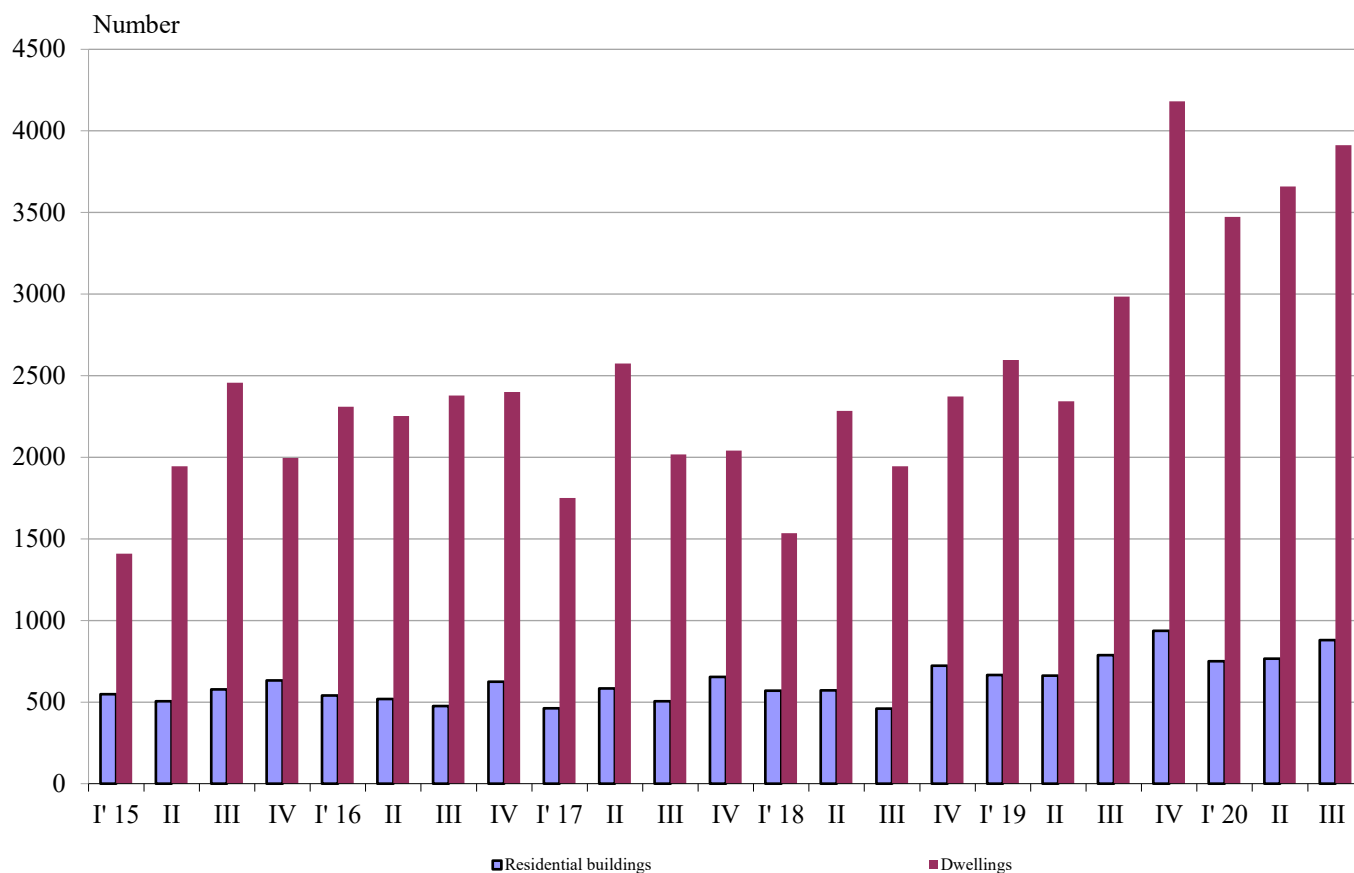


NEWLY BUILT RESIDENTIAL BUILDINGS AND DWELLINGS COMPLETED IN THE THIRD QUARTER OF 2020 (PRELIMINARY DATA)

According to preliminary data of the National Statistical Institute in the third quarter of 2020 the number of newly built residential buildings was 879 and the newly built dwellings in them were 3 912 (Annex, Table 1). Compared to the third quarter of 2019 the buildings were by 91 more (or by 11.5%), and the newly built dwellings in them increased by 928 or by 31.1% (Figure 1).

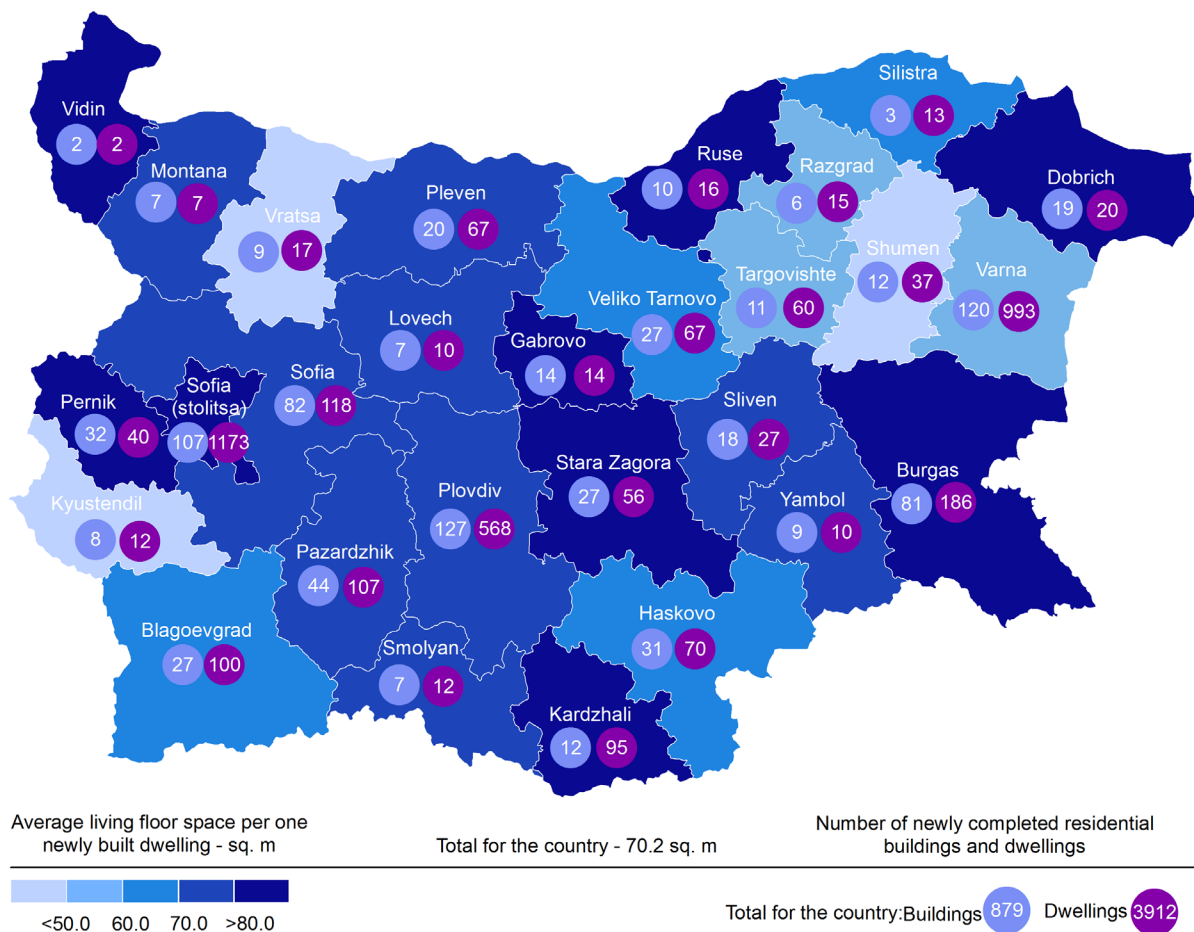
Figure 1. Newly built residential buildings and dwellings completed by quarters



In the third quarter of 2020, 76.7% of the newly built residential buildings were with steel-concrete construction, 20.4% with solid structure, 2.5% with 'other' and 0.4% with panel. Highest is the relative share of houses (73.2%), followed by blocks of flats (18.1%). As compared to the third quarter of 2019 the number of newly built houses and blocks of flats rose, while the number of mixed buildings and country houses dropped (Annex, Table 2).

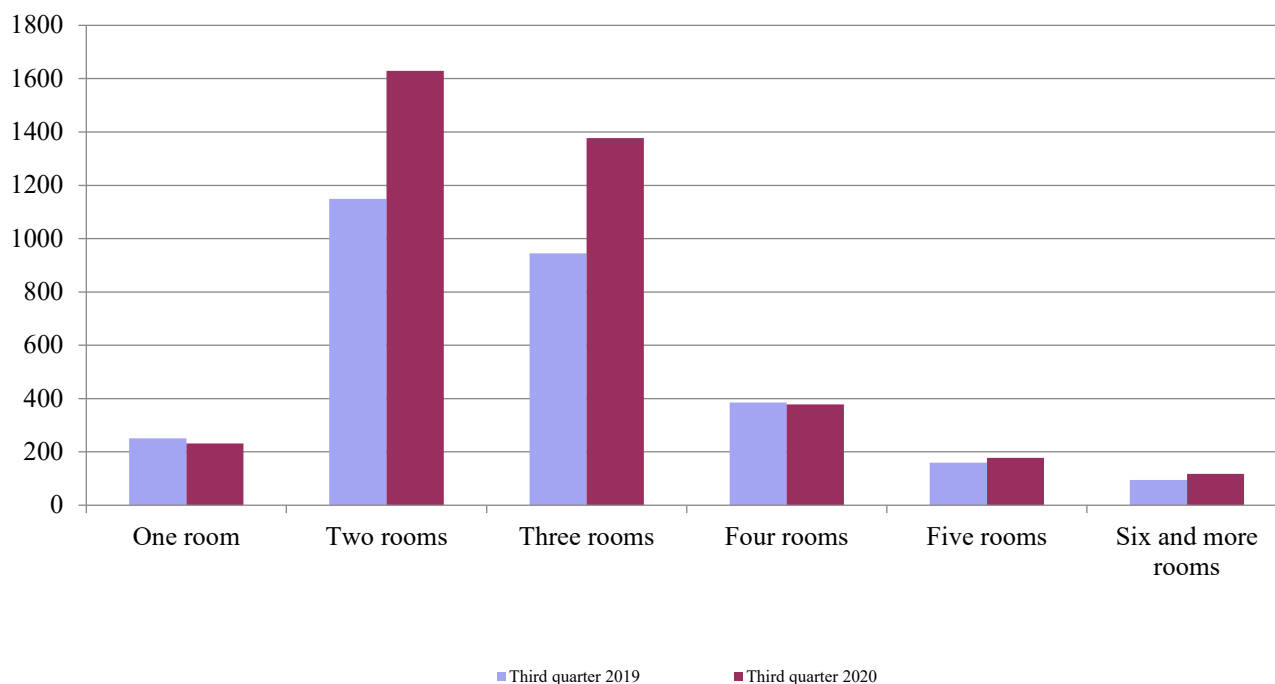
Highest is the number of residential buildings built in district Plovdiv - 127 residential buildings with 568 dwellings, followed by Varna - 120 residential buildings with 993 dwellings and Sofia (stolitsa) - 107 buildings with 1 173 dwellings in them (Figure 2).

Figure 2. Newly built residential buildings and dwellings completed in third quarter of 2020 by districts



Highest is the number of newly built dwellings with two rooms (41.6%), followed by the number of those with three rooms (35.2%) and lowest is the number of dwellings with six and more rooms - 3.0% (Figure 3).

Figure 3. Newly built dwellings completed by number of rooms

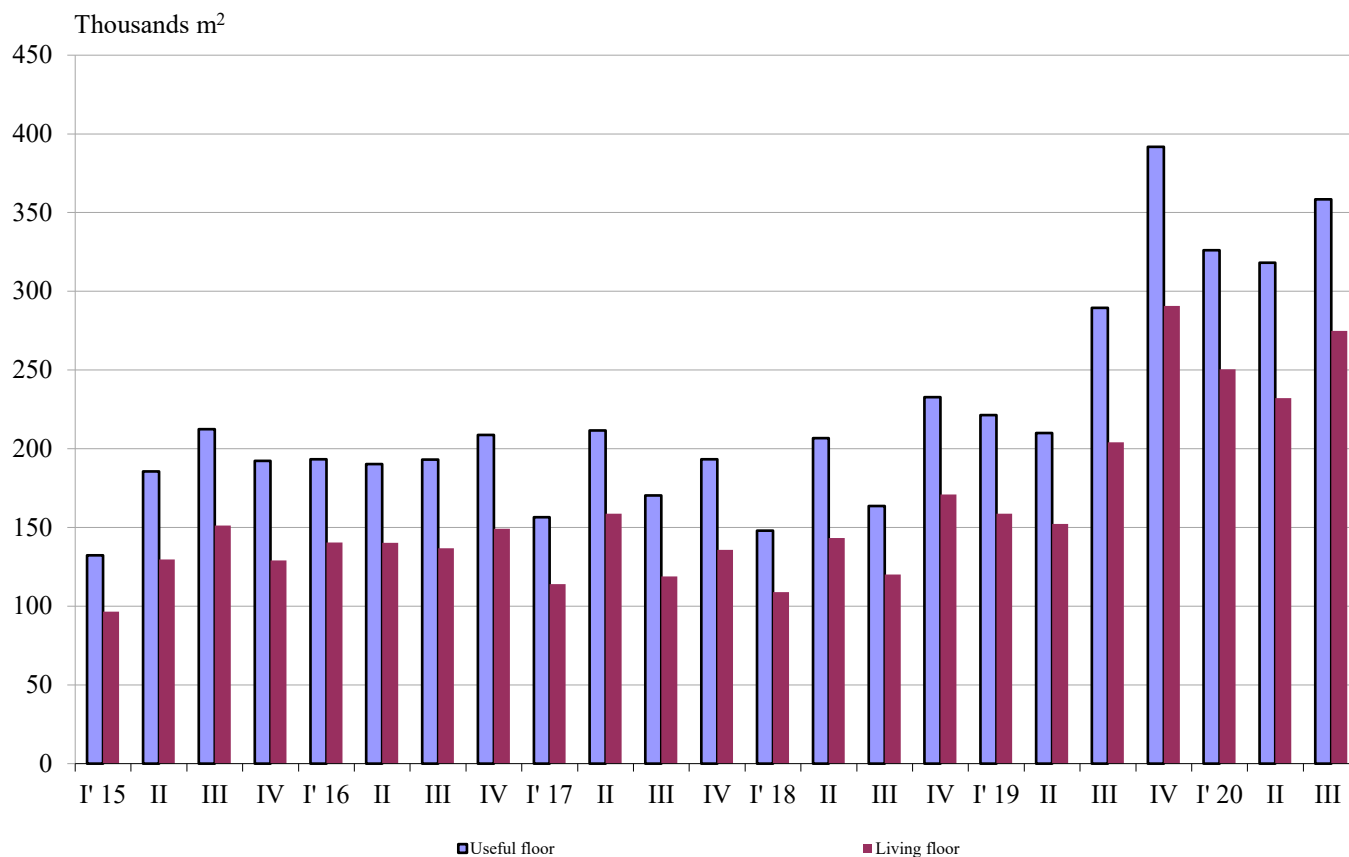


In the third quarter of 2020 **the total useful space** of newly built dwellings was 358.4 thousand sq. m or by 23.8% more, compared to the same quarter of 2019, and **the living floor space** increased (by 34.6%) to 274.8 thousand sq. m (Figure 4).

The **average useful floor space** of a newly built dwelling decreased from 97.0 sq. m in the third quarter of 2019 to 91.6 sq. m in the same quarter of 2020.

The biggest average useful floor space of a newly built dwelling was recorded in districts Gabrovo - 190.9 sq. m and Ruse - 181.5 sq. m, and the smallest one in Blagoevgrad - 65.9 sq. m and Kyustendil - 56.9 sq. meters.

Figure 4. Total useful floor space and living floor space of newly built dwellings completed by quarters



Methodological notes

The statistical data about the newly built residential buildings and dwellings are prepared based on quarterly reports of the municipal administrations.

In the scope of survey are newly built residential buildings with approved or valid usage license according to Regulation No. 2/31.07.2003 of the Ministry of Regional Development and Public Works.

Living floor space is the floor space of living rooms, bedrooms, recesses for sleeping, dining rooms, cabinets and libraries of scientists and drawing rooms and the space of kitchens with over 4 sq. m floor space. The space of the kitchens with over 4 sq. m floor area was presented separately before 31.12.2018.

Service floor space is the floor space of rooms and kitchens with less than 4 square meters floor space, vestibules with a portal or other screen, corridors, bathrooms, toilets, larders, hanging closets, other service rooms such as drying-rooms, laundries or balconies regardless their space.

The useful floor space of dwelling is a sum of the living-floor-space and the service floor space.

The average useful floor space is a ratio between the useful floor space and the number of dwellings.

Annex

Table 1

Newly built residential buildings and dwellings completed in the third quarter of 2020¹

Districts	Newly completed residential buildings and dwellings - in numbers		Useful floor area of newly built dwellings - sq. m		
	Buildings	Dwellings	Total	Living floor space, incl. kitchens over 4 sq. m	Service floor space, incl. kitchens under 4 sq. m
Total	879	3912	358367	274803	83564
Blagoevgrad	27	100	6588	6233	355
Burgas	81	186	22608	16145	6463
Varna	120	993	73601	50788	22813
Veliko Tarnovo	27	67	5916	4411	1505
Vidin	2	2	215	198	17
Vratsa	9	17	1259	840	419
Gabrovo	14	14	2672	1744	928
Dobrich	19	20	2290	1708	582
Kardzhali	12	95	9434	8441	993
Kyustendil	8	12	683	524	159
Lovech	7	10	1112	789	323
Montana	7	7	708	510	198
Pazardzhik	44	107	11043	7545	3498
Pernik	32	40	4323	3419	904
Pleven	20	67	6572	4777	1795
Plovdiv	127	568	52412	40614	11798
Razgrad	6	15	1375	885	490
Ruse	10	16	2904	1855	1049
Silistra	3	13	1085	823	262
Sliven	18	27	2652	1920	732
Smolyan	7	12	1062	916	146
Sofia	82	118	13829	9370	4459
Sofia (stolitsa)	107	1173	111377	94324	17053
Stara Zagora	27	56	6972	5952	1020
Targovishte	11	60	4647	3021	1626
Haskovo	31	70	6593	4773	1820
Shumen	12	37	3499	1570	1929
Yambol	9	10	936	708	228

¹Preliminary data.

Table 2

Newly built residential buildings by type of building

(Number)

	2017				2018				2019				2020 *		
	I quarter	II quarter	III quarter	IV quarter	I quarter	II quarter	III quarter	IV quarter	I quarter	II quarter	III quarter	IV quarter	I quarter	II quarter	III quarter
Total	462	584	505	654	570	572	460	722	665	662	788	937	751	766	879
Houses	350	405	366	495	451	420	334	573	490	504	576	693	542	535	643
Blocks of flats	63	102	78	89	65	89	91	91	111	98	125	183	143	174	159
Mixed buildings	24	16	17	28	21	24	8	19	31	27	33	36	31	36	27
Hostels	-	-	-	-	-	-	-	-	1	2	1	1	1	2	2
Country houses	24	61	44	40	32	37	27	39	29	30	51	24	34	19	47
Buildings of institutional households	1	-	-	2	1	2	-	-	3	1	2	-	-	-	1

* Preliminary data.