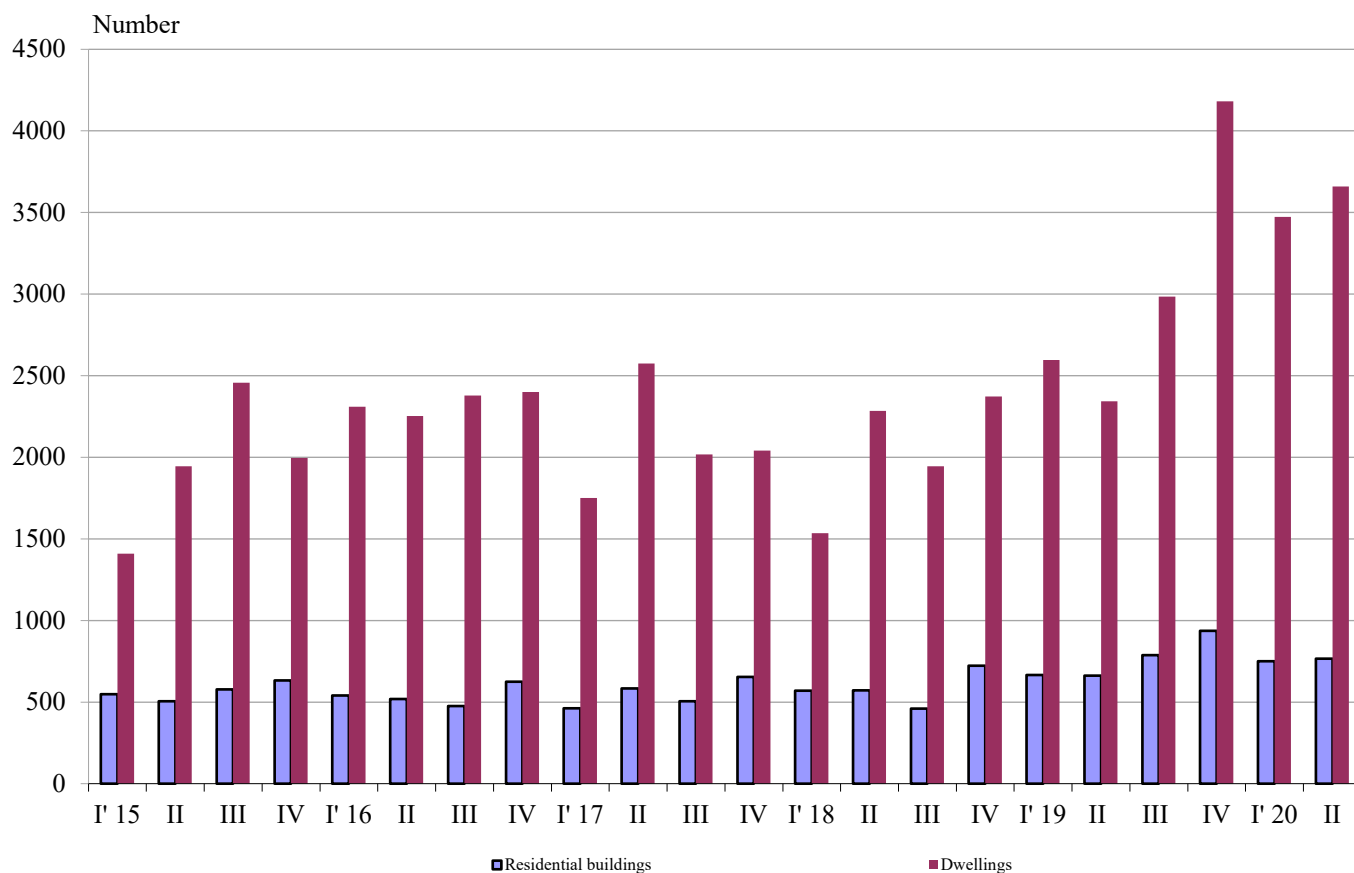


NEWLY BUILT RESIDENTIAL BUILDINGS AND DWELLINGS COMPLETED IN THE SECOND QUARTER OF 2020 (PRELIMINARY DATA)

According to preliminary data of the National Statistical Institute in the second quarter of 2020 the number of newly built residential buildings was 766 and the newly built dwellings in them were 3 660 (Annex, Table 1). Compared to the second quarter of 2019 the buildings were by 104 more (or by 15.7%), and the newly built dwellings in them increased by 1 317 or by 56.2% (Figure 1).

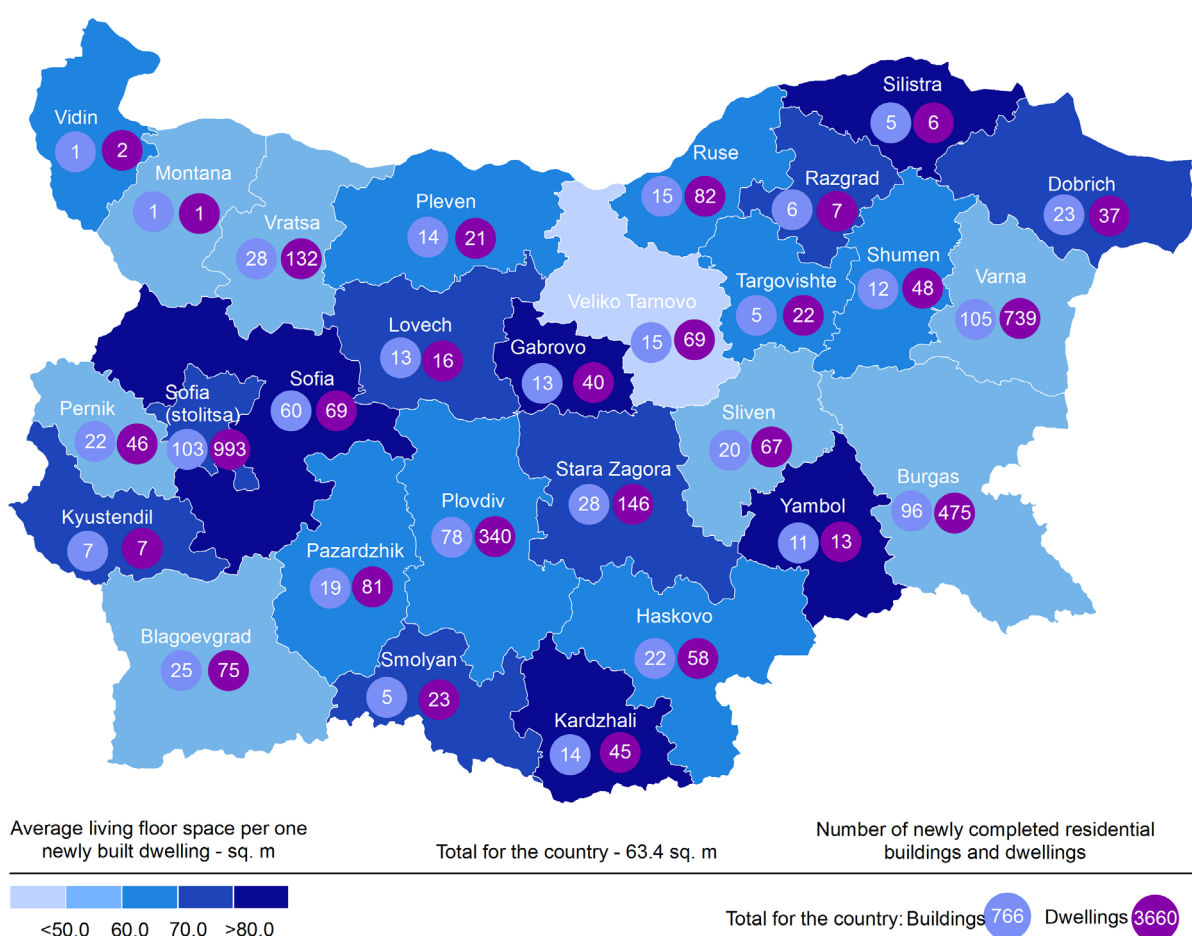
Figure 1. Newly built residential buildings and dwellings completed by quarters



In the second quarter of 2020, 81.3% of the newly built residential buildings were with steel-concrete construction, 16.5% with solid structure, 1.8% with 'other' and 0.4% with panel. Highest is the relative share of houses (69.8%), followed by blocks of flats (22.7%). As compared to the second quarter of 2019 the number of newly built houses, blocks of flats and mixed buildings rose (Annex, Table 2).

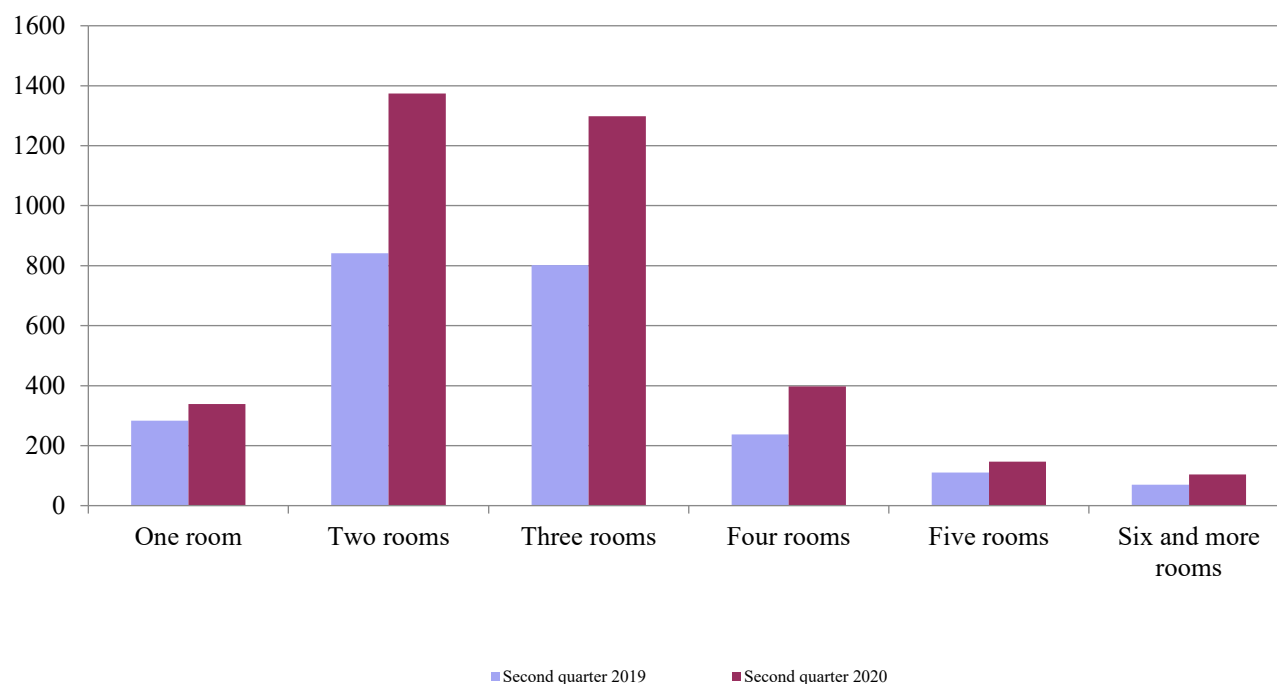
Highest is the number of residential buildings built in district Varna - 105 residential buildings with 739 dwellings, followed by Sofia (stolitsa) - 103 residential buildings with 993 dwellings and Burgas - 96 buildings with 475 dwellings in them (Figure 2).

Figure 2. Newly built residential buildings and dwellings completed in second quarter of 2020 by districts



Highest is the number of newly built dwellings with two rooms (37.5%), followed by the number of those with three rooms (35.5%) and lowest is the number of dwellings with six and more rooms - 2.8% (Figure 3).

Figure 3. Newly built dwellings completed by number of rooms

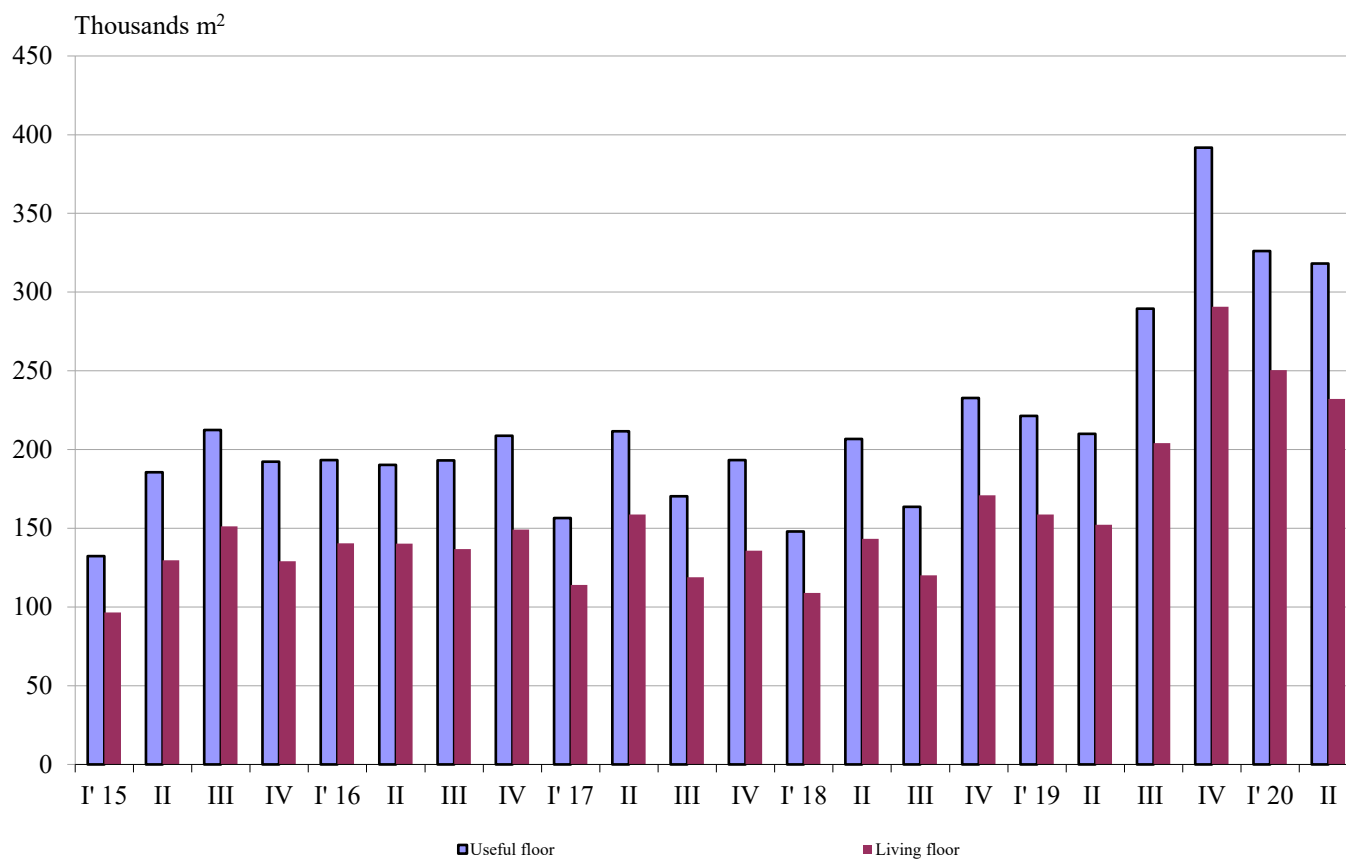


In the second quarter of 2020 **the total useful space** of newly built dwellings was 318.2 thousand sq. m or by 51.5% more, compared to the same quarter of 2019, and **the living floor space** increased (by 52.5%) to 232.1 thousand sq. m (Figure 4).

The **average useful floor space** of a newly built dwelling decreased from 89.7 sq. m in the second quarter of 2019 to 86.9 sq. m in the same quarter of 2020.

The biggest average useful floor space of a newly built dwelling was recorded in districts Razgrad - 137.6 sq. m and Silistra - 135.3 sq. m, and the smallest one in Veliko Tarnovo - 62.5 sq. m and Montana - 57.0 sq. meters.

Figure 4. Total useful floor space and living floor space of newly built dwellings completed by quarters



Methodological notes

The statistical data about the newly built residential buildings and dwellings are prepared based on quarterly reports of the municipal administrations.

In the scope of survey are newly built residential buildings with approved or valid usage license according to Regulation No. 2/31.07.2003 of the Ministry of Regional Development and Public Works.

Living floor space is the floor space of living rooms, bedrooms, recesses for sleeping, dining rooms, cabinets and libraries of scientists and drawing rooms and the space of kitchens with over 4 sq. m floor space. The space of the kitchens with over 4 sq. m floor area was presented separately before 31.12.2018.

Service floor space is the floor space of rooms and kitchens with less than 4 square meters floor space, vestibules with a portal or other screen, corridors, bathrooms, toilets, larders, hanging closets, other service rooms such as drying-rooms, laundries or balconies regardless their space.

The useful floor space of dwelling is a sum of the living-floor-space and the service floor space.

The average useful floor space is a ratio between the useful floor space and the number of dwellings.

Annex

Table 1

Newly built residential buildings and dwellings completed in the second quarter of 2020¹

| Districts | Newly completed residential buildings and dwellings - in numbers | | Useful floor area of newly built dwellings - sq. m | | |
|------------------|--|-------------|--|---|---|
| | Buildings | Dwellings | Total | Living floor space, incl. kitchens over 4 sq. m | Service floor space, incl. kitchens under 4 sq. m |
| Total | 766 | 3660 | 318153 | 232123 | 86030 |
| Blagoevgrad | 25 | 75 | 5981 | 4427 | 1554 |
| Burgas | 96 | 475 | 37406 | 26166 | 11240 |
| Varna | 105 | 739 | 58221 | 37311 | 20910 |
| Veliko Tarnovo | 15 | 69 | 4315 | 3218 | 1097 |
| Vidin | 1 | 2 | 233 | 140 | 93 |
| Vratsa | 28 | 132 | 10408 | 7793 | 2615 |
| Gabrovo | 13 | 40 | 4447 | 3203 | 1244 |
| Dobrich | 23 | 37 | 3800 | 2908 | 892 |
| Kardzhali | 14 | 45 | 4590 | 4262 | 328 |
| Kyustendil | 7 | 7 | 936 | 519 | 417 |
| Lovech | 13 | 16 | 1833 | 1243 | 590 |
| Montana | 1 | 1 | 57 | 53 | 4 |
| Pazardzhik | 19 | 81 | 8138 | 5668 | 2470 |
| Pernik | 22 | 46 | 3268 | 2532 | 736 |
| Pleven | 14 | 21 | 1963 | 1344 | 619 |
| Plovdiv | 78 | 340 | 30469 | 21886 | 8583 |
| Razgrad | 6 | 7 | 963 | 521 | 442 |
| Ruse | 15 | 82 | 7688 | 4974 | 2714 |
| Silistra | 5 | 6 | 812 | 536 | 276 |
| Sliven | 20 | 67 | 6017 | 3975 | 2042 |
| Smolyan | 5 | 23 | 2220 | 1615 | 605 |
| Sofia | 60 | 69 | 9232 | 6744 | 2488 |
| Sofia (stolitsa) | 103 | 993 | 86059 | 70152 | 15907 |
| Stara Zagora | 28 | 146 | 15834 | 11485 | 4349 |
| Targovishte | 5 | 22 | 2333 | 1461 | 872 |
| Haskovo | 22 | 58 | 4888 | 3845 | 1043 |
| Shumen | 12 | 48 | 4298 | 2942 | 1356 |
| Yambol | 11 | 13 | 1744 | 1200 | 544 |

¹ Preliminary data.

Table 2

Newly built residential buildings by type of building

(Number)

| | 2017 | | | | 2018 | | | | 2019 | | | | 2020* | |
|---------------------------------------|------------|------------|-------------|------------|------------|------------|-------------|------------|------------|------------|-------------|------------|------------|------------|
| | I quarter | II quarter | III quarter | IV quarter | I quarter | II quarter | III quarter | IV quarter | I quarter | II quarter | III quarter | IV quarter | I quarter | II quarter |
| Total | 462 | 584 | 505 | 654 | 570 | 572 | 460 | 722 | 665 | 662 | 788 | 937 | 751 | 766 |
| Houses | 350 | 405 | 366 | 495 | 451 | 420 | 334 | 573 | 490 | 504 | 576 | 693 | 542 | 535 |
| Blocks of flats | 63 | 102 | 78 | 89 | 65 | 89 | 91 | 91 | 111 | 98 | 125 | 183 | 143 | 174 |
| Mixed buildings | 24 | 16 | 17 | 28 | 21 | 24 | 8 | 19 | 31 | 27 | 33 | 36 | 31 | 36 |
| Hostels | - | - | - | - | - | - | - | - | 1 | 2 | 1 | 1 | 1 | 2 |
| Country houses | 24 | 61 | 44 | 40 | 32 | 37 | 27 | 39 | 29 | 30 | 51 | 24 | 34 | 19 |
| Buildings of institutional households | 1 | - | - | 2 | 1 | 2 | - | - | 3 | 1 | 2 | - | - | - |

* Preliminary data.