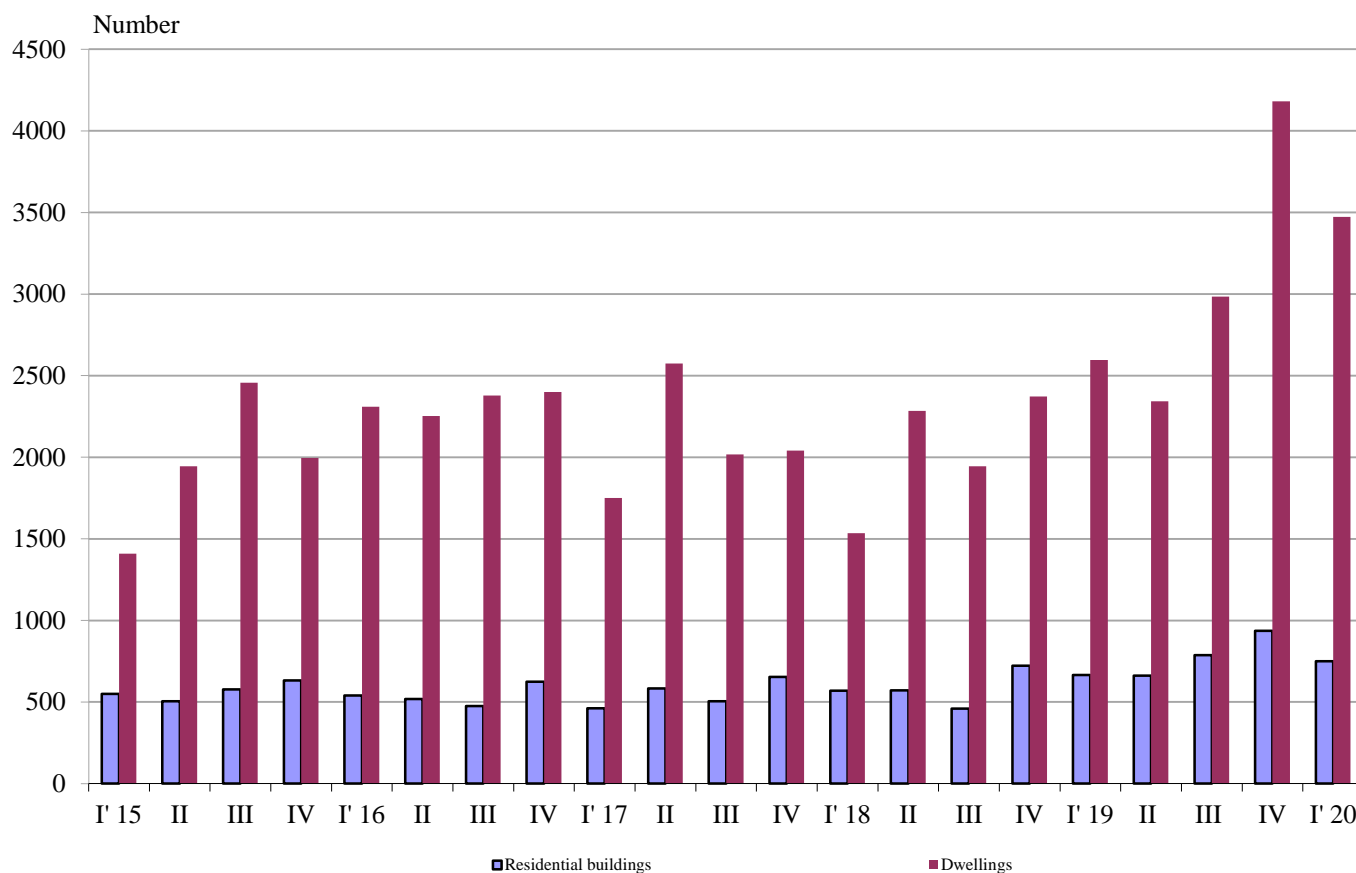


## NEWLY BUILT RESIDENTIAL BUILDINGS AND DWELLINGS COMPLETED IN THE FIRST QUARTER OF 2020 (PRELIMINARY DATA)

According to preliminary data of the National Statistical Institute in the first quarter of 2020 the number of newly built residential buildings was 751 and the newly built dwellings in them were 3 473 (Annex, Table 1). Compared to the first quarter of 2019 the buildings were by 86 more (or by 12.9%), and the newly built dwellings in them increased by 876 or by 33.7% (Figure 1).

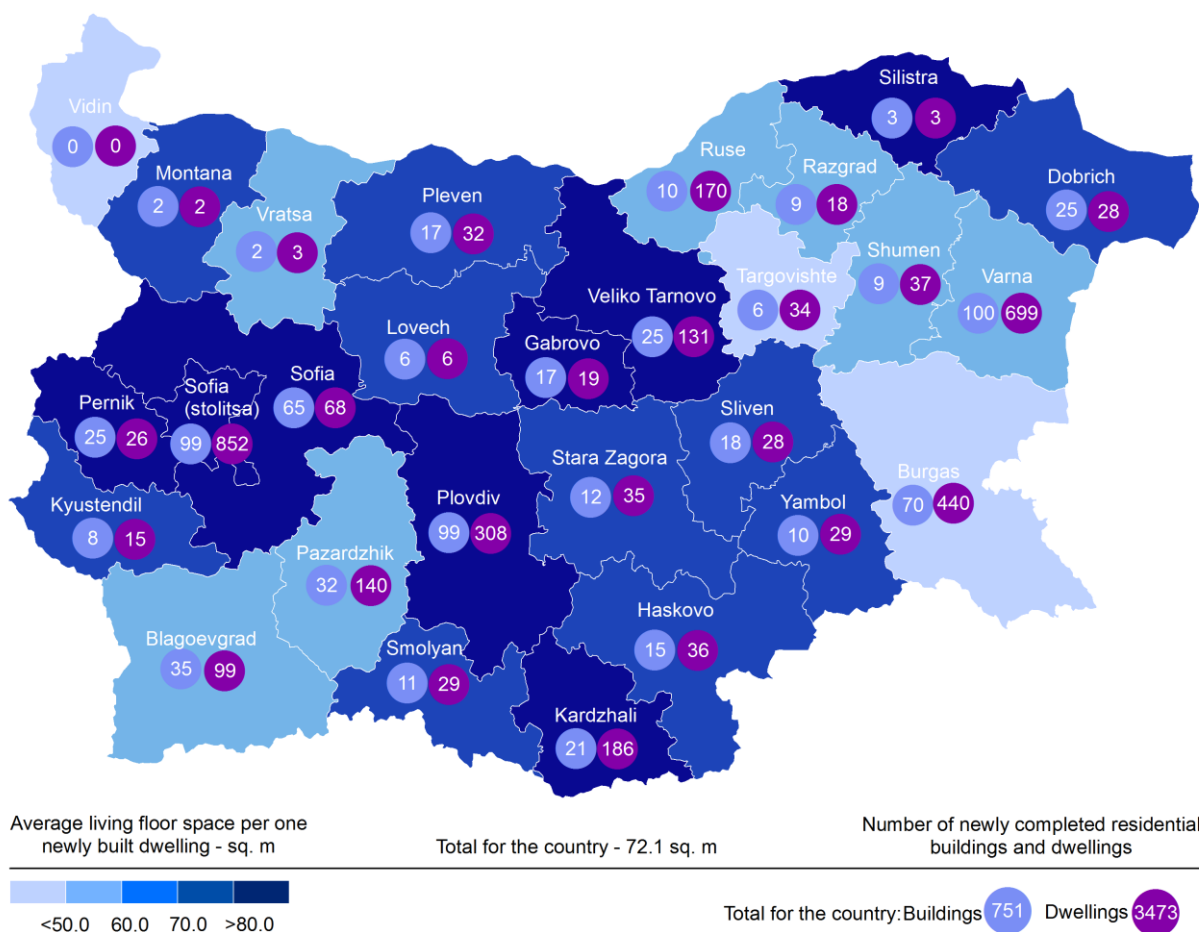
**Figure 1. Newly built residential buildings and dwellings completed by quarters**



In the first quarter of 2020, 79.4% of the newly built residential buildings were with steel-concrete construction, 17.7% with solid structure, 2.5% with 'other' and 0.4% with panel. Highest is the relative share of houses (72.2%), followed by blocks of flats (19.1%). As compared to the first quarter of 2019 the number of newly built houses, blocks of flats and the country houses rose (Annex, Table 2).

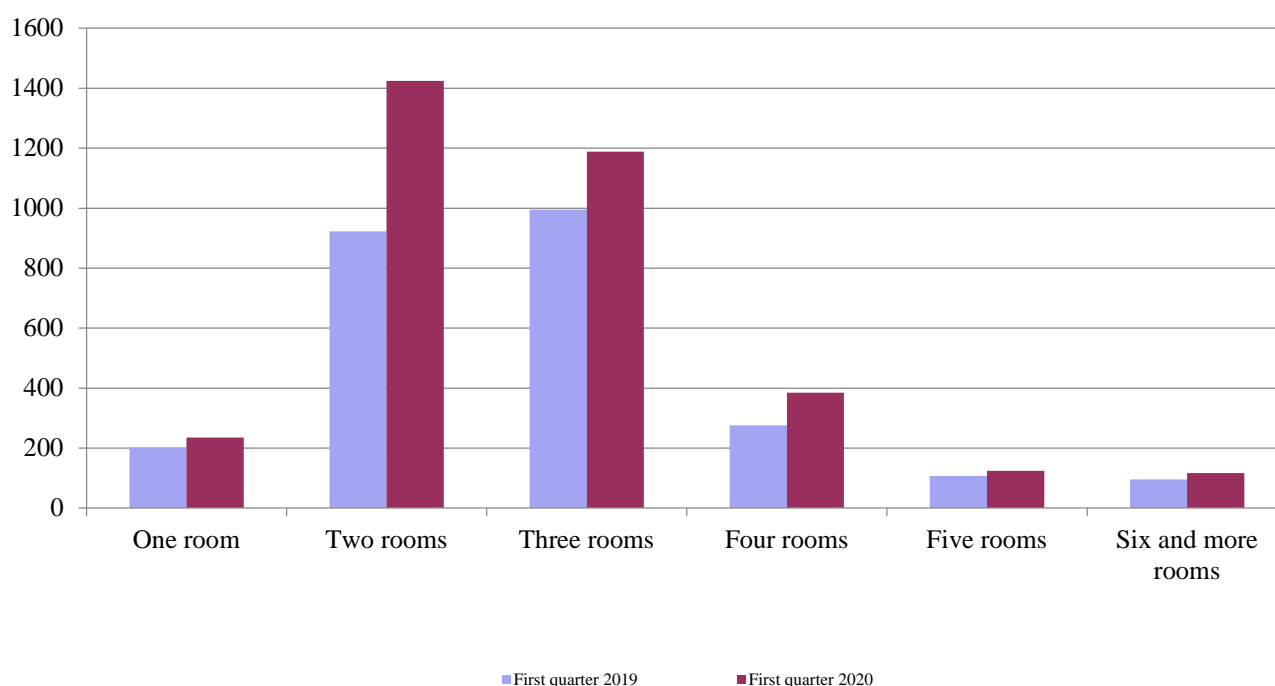
Highest is the number of residential buildings built in district Varna - 100 residential buildings with 699 dwellings, followed by Sofia (stolitsa) - 99 residential buildings with 852 dwellings and Plovdiv - 99 buildings with 308 dwellings in them (Figure 2).

**Figure 2. Newly built residential buildings and dwellings completed in first quarter of 2020 by districts**



Highest is the number of newly built dwellings with two rooms (41.0%), followed by the number of those with three rooms (34.2%) and lowest is the number of dwellings with six and more rooms - 3.3% (Figure 3).

**Figure 3. Newly built dwellings completed by number of rooms**

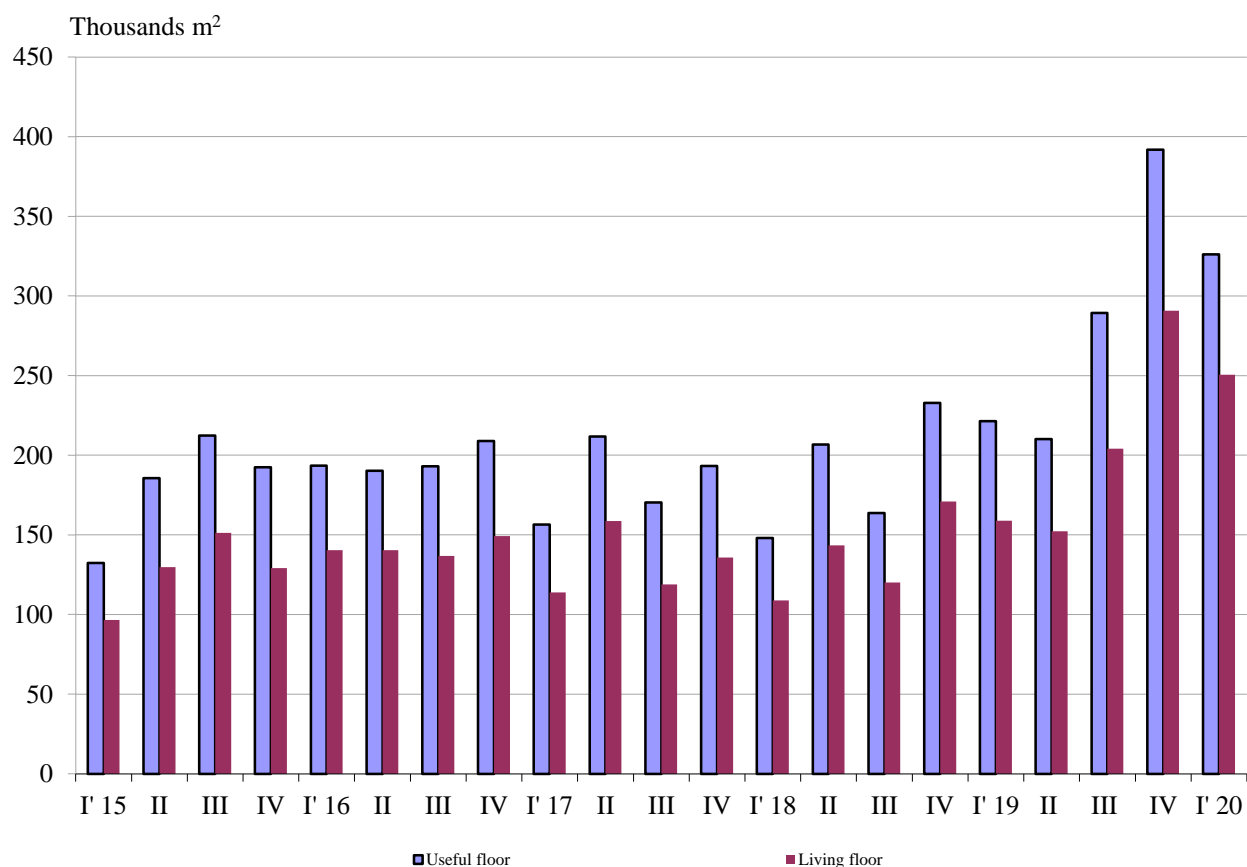


In the first quarter of 2020 **the total useful space** of newly built dwellings was 326.1 thousand sq. m or by 47.3% more, compared to the same quarter of 2019, and **the living floor space** increased (by 57.7%) to 250.5 thousand sq. m (Figure 4).

The **average useful floor space** of a newly built dwelling increased from 85.3 sq. m in the first quarter of 2019 to 93.9 sq. m in the same quarter of 2020.

The biggest average useful floor space of a newly built dwelling was recorded in districts Gabrovo - 234.7 sq. m and Silistra - 199.0 sq. m, and the smallest one in Vratsa - 70.0 sq. m and Blagoevgrad - 66.7 sq. meters.

**Figure 4. Total useful floor space and living floor space of newly built dwellings completed by quarters**



## Methodological notes

The statistical data about the newly built residential buildings and dwellings are prepared based on quarterly reports of the municipal administrations.

In the scope of survey are newly built residential buildings with approved or valid usage license according to Regulation No. 2/31.07.2003 of the Ministry of Regional Development and Public Works.

**Living floor space** is the floor space of living rooms, bedrooms, recesses for sleeping, dining rooms, cabinets and libraries of scientists and drawing rooms and the space of kitchens with over 4 sq. m floor space. The space of the kitchens with over 4 sq. m floor area was presented separately before 31.12.2018.

**Service floor space** is the floor space of rooms and kitchens with less than 4 square meters floor space, vestibules with a portal or other screen, corridors, bathrooms, toilets, larders, hanging closets, other service rooms such as drying-rooms, laundries or balconies regardless their space.

**The useful floor space** of dwelling is a sum of the living-floor-space and the service floor space.

**The average useful floor space** is a ratio between the useful floor space and the number of dwellings.

## Annex

Table 1

### Newly built residential buildings and dwellings completed in the first quarter of 2020<sup>1</sup>

Districts	Newly completed residential buildings and dwellings - in numbers		Useful floor area of newly built dwellings - sq. m		
	Buildings	Dwellings	Total	Living floor space, incl. kitchens over 4 sq. m	Service floor space, incl. kitchens under 4 sq. m
<b>Total</b>	<b>751</b>	<b>3473</b>	<b>326076</b>	<b>250458</b>	<b>75618</b>
Blagoevgrad	35	99	6603	5606	997
Burgas	70	440	30875	21995	8880
Varna	100	699	60020	40458	19562
Veliko Tarnovo	25	131	13321	10572	2749
Vidin	-	-	-	-	-
Vratsa	2	3	210	172	38
Gabrovo	17	19	4459	2565	1894
Dobrich	25	28	2998	2075	923
Kardzhali	21	186	19463	18075	1388
Kyustendil	8	15	1327	1116	211
Lovech	6	6	602	461	141
Montana	2	2	289	153	136
Pazardzhik	32	140	11135	7348	3787
Pernik	25	26	3227	2174	1053
Pleven	17	32	2892	2342	550
Plovdiv	99	308	34409	25916	8493
Razgrad	9	18	1591	1010	581
Ruse	10	170	13791	10147	3644
Silistra	3	3	597	496	101
Sliven	18	28	3062	2077	985
Smolyan	11	29	2881	2209	672
Sofia	65	68	9450	6512	2938
Sofia (stolitsa)	99	852	87519	75927	11592
Stara Zagora	12	35	3464	2694	770
Targovishte	6	34	2438	1231	1207
Haskovo	15	36	3863	2878	985
Shumen	9	37	3056	2153	903
Yambol	10	29	2534	2096	438

<sup>1</sup> Preliminary data.

**Table 2**

**Newly built residential buildings by type of building**

(Number)

	2017				2018				2019				2020 <sup>1</sup>
	I quarter	II quarter	III quarter	IV quarter	I quarter	II quarter	III quarter	IV quarter	I quarter	II quarter	III quarter	IV quarter	I quarter
<b>Total</b>	<b>462</b>	<b>584</b>	<b>505</b>	<b>654</b>	<b>570</b>	<b>572</b>	<b>460</b>	<b>722</b>	<b>665</b>	<b>662</b>	<b>788</b>	<b>937</b>	<b>751</b>
Houses	350	405	366	495	451	420	334	573	490	504	576	693	542
Blocks of flats	63	102	78	89	65	89	91	91	111	98	125	183	143
Mixed buildings	24	16	17	28	21	24	8	19	31	27	33	36	31
Hostels	-	-	-	-	-	-	-	-	1	2	1	1	1
Country houses	24	61	44	40	32	37	27	39	29	30	51	24	34
Buildings of institutional households	1	-	-	2	1	2	-	-	3	1	2	-	-

<sup>1</sup> Preliminary data.