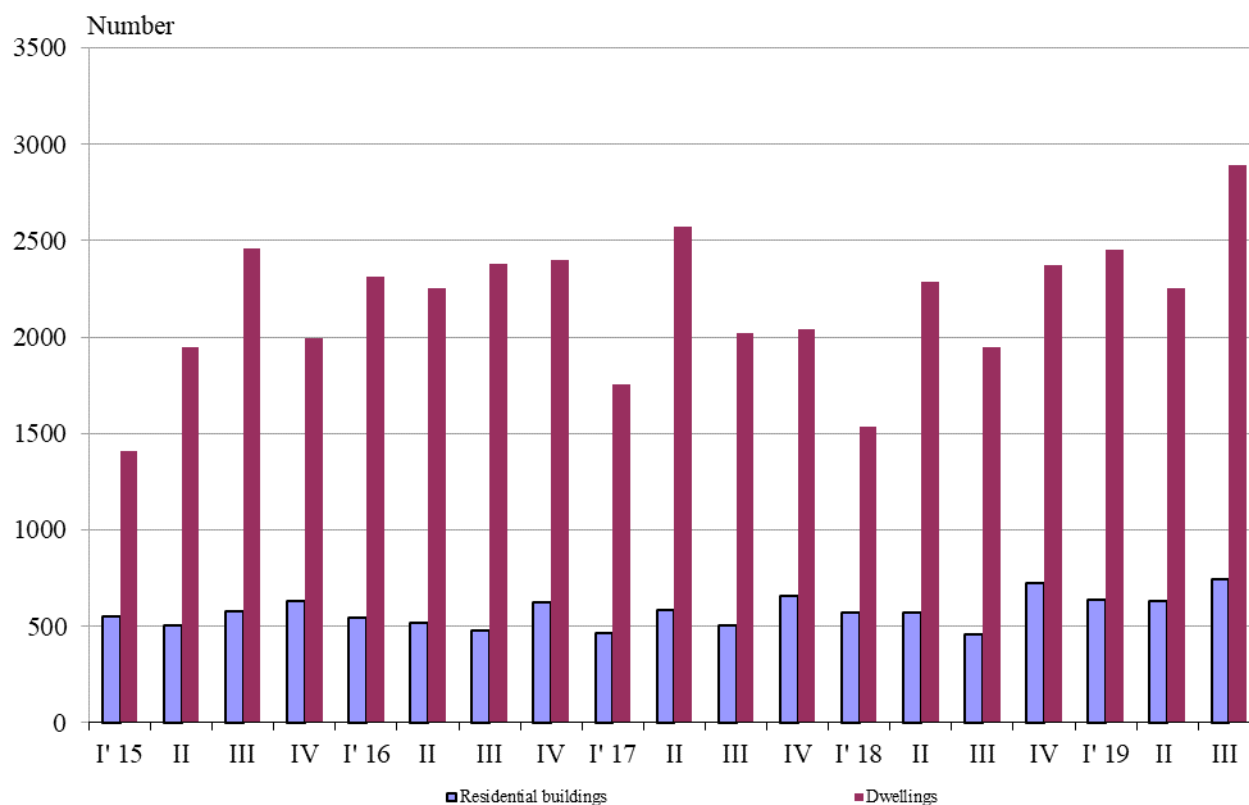




NEWLY BUILT RESIDENTIAL BUILDINGS AND DWELLINGS COMPLETED IN THE THIRD QUARTER OF 2019 (PRELIMINARY DATA)

According to preliminary data of the National Statistical Institute in the third quarter of 2019 the number of newly built residential buildings was 740 and the newly built dwellings in them were 2 892 (Annex, Table 1). Compared to the third quarter of 2018 the buildings were by 280 more (or by 60.9%), and the newly built dwellings in them increased by 948 or by 48.8% (Figure 1).

Figure 1. Newly built residential buildings and dwellings completed by quarters

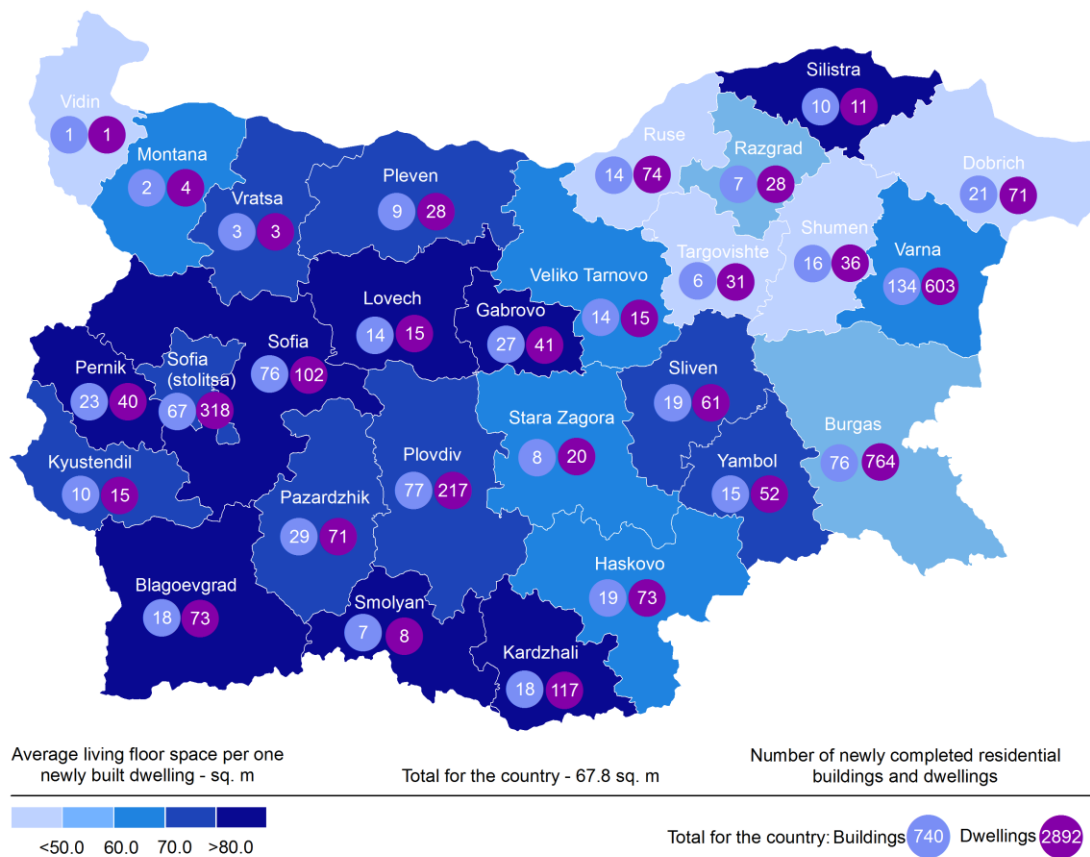


In the third quarter of 2019, 76.6% of the newly built residential buildings were with steel-concrete construction, 20.4% with solid structure, 2.4% with 'other' and 0.6% with panel. Highest is the relative share of houses (72.2%), followed by blocks of flats (16.5%). As compared to the third quarter of 2018 the number of all types of newly built residential buildings rose (Annex, Table 2).

Highest is the number of residential buildings built in district Varna - 134 residential buildings with 603 dwellings, followed by Plovdiv - 77 residential buildings with 217 dwellings, Burgas and Sofia - 76 buildings respectively with 764 and 102 dwellings in them (Figure 2).



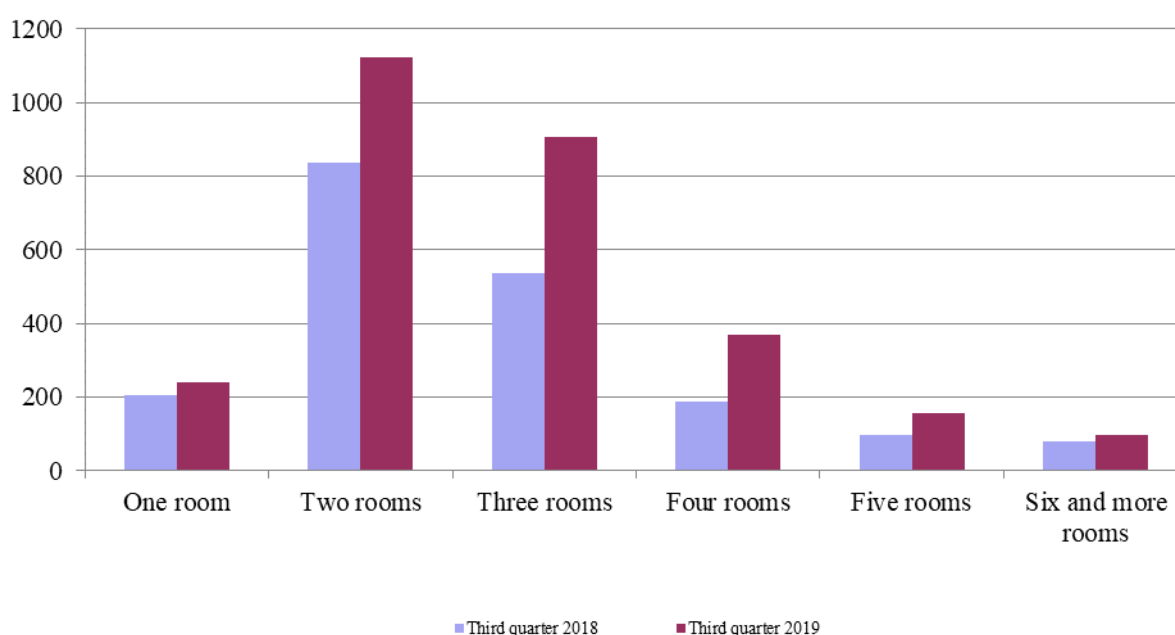
Figure 2. Newly built residential buildings and dwellings completed in third quarter of 2019 by districts



Highest is the number of newly built dwellings with two rooms (38.8%), followed by the number of those with three rooms (31.3%) and lowest is the number of dwellings with six and more rooms - 3.4% (Figure 3).



Figure 3. Newly built dwellings completed by number of rooms



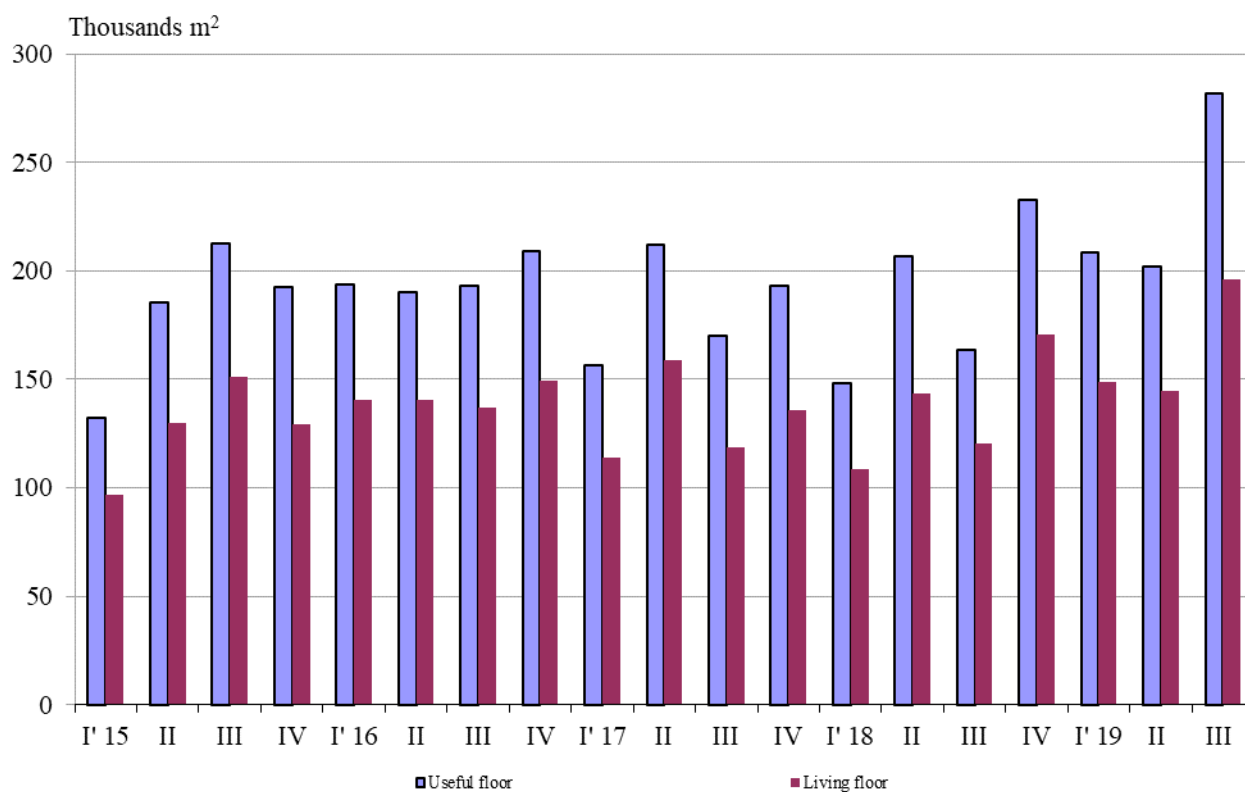
In the third quarter of 2019 **the total useful space** of newly built dwellings was 281.5 thousand sq. m or by 71.9% more, compared to the same quarter of 2018, and **the living floor space** increased (by 63.2%) to 196.1 thousand sq. m (Figure 4).

The **average useful floor space** of a newly built dwelling increased from 84.2 sq. m in the third quarter of 2018 to 97.3 sq. m in the same quarter of 2019.

The biggest average useful floor space of a newly built dwelling was recorded in districts Silistra - 191.4 sq. m and Gabrovo - 190.8 sq. m, and the smallest one in Vidin - 46.0 sq. m and Razgrad - 71.9 sq. meters.



Figure 4. Total useful floor space and living floor space of newly built dwellings completed by quarters





Methodological notes

The statistical data about the newly built residential buildings and dwellings are prepared based on quarterly reports of the municipal administrations.

In the scope of survey are newly built residential buildings with approved or valid usage license according to Regulation No. 2/31.07.2003 of the Ministry of Regional Development and Public Works.

Living floor space is the floor space of living rooms, bedrooms, recesses for sleeping, dining rooms, cabinets and libraries of scientists and drawing rooms and the space of kitchens with over 4 sq. m floor space. The space of the kitchens with over 4 sq. m floor area was presented separately before 31.12.2018.

Service floor space is the floor space of rooms and kitchens with less than 4 square meters floor space, vestibules with a portal or other screen, corridors, bathrooms, toilets, larders, hanging closets, other service rooms such as drying-rooms, laundries or balconies regardless their space.

The useful floor space of dwelling is a sum of the living-floor-space and the service floor space.

The average useful floor space is a ratio between the useful floor space and the number of dwellings.



Annex

Table 1

Newly built residential buildings and dwellings completed in the third quarter of 2019¹

Districts	Newly completed residential buildings and dwellings - in numbers		Useful floor area of newly built dwellings - sq. m		
	Buildings	Dwellings	Total	Living floor space, incl. kitchens over 4 sq. m	Service floor space, incl. kitchens under 4 sq. m
Total	740	2892	281490	196052	85438
Blagoevgrad	18	73	8822	7864	958
Burgas	76	764	58170	38672	19498
Varna	134	603	57923	37643	20280
Veliko Tarnovo	14	15	1312	969	343
Vidin	1	1	46	34	12
Vratsa	3	3	255	223	32
Gabrovo	27	41	7821	4224	3597
Dobrich	21	71	5265	3013	2252
Kardzhali	18	117	17910	15133	2777
Kyustendil	10	15	1707	1178	529
Lovech	14	15	2407	1654	753
Montana	2	4	748	250	498
Pazardzhik	29	71	7416	5104	2312
Pernik	23	40	5867	4660	1207
Pleven	9	28	3077	2181	896
Plovdiv	77	217	21331	15949	5382
Razgrad	7	28	2014	1465	549
Ruse	14	74	5847	2946	2901
Silistra	10	11	2105	1114	991
Sliven	19	61	6286	4362	1924
Smolyan	7	8	1064	802	262
Sofia	76	102	14068	9282	4786
Sofia (stolitsa)	67	318	31939	24084	7855
Stara Zagora	8	20	1782	1365	417
Targovishte	6	31	2651	1518	1133
Haskovo	19	73	6393	5003	1390
Shumen	16	36	2619	1647	972
Yambol	15	52	4645	3713	932

¹ Preliminary data.



Table 2

Newly built residential buildings by type of building

(Number)

	2017				2018				2019*		
	I quarter	II quarter	III quarter	IV quarter	I quarter	II quarter	III quarter	IV quarter	I quarter	II quarter	III quarter
Total	462	584	505	654	570	572	460	722	635	632	740
Houses	350	405	366	495	451	420	334	573	469	480	534
Blocks of flats	63	102	78	89	65	89	91	91	105	94	122
Mixed buildings	24	16	17	28	21	24	8	19	29	25	32
Hostels	-	-	-	-	-	-	-	-	1	2	1
Country houses	24	61	44	40	32	37	27	39	29	30	49
Buildings of institutional households	1	-	-	2	1	2	-	-	2	1	2

* Preliminary data.