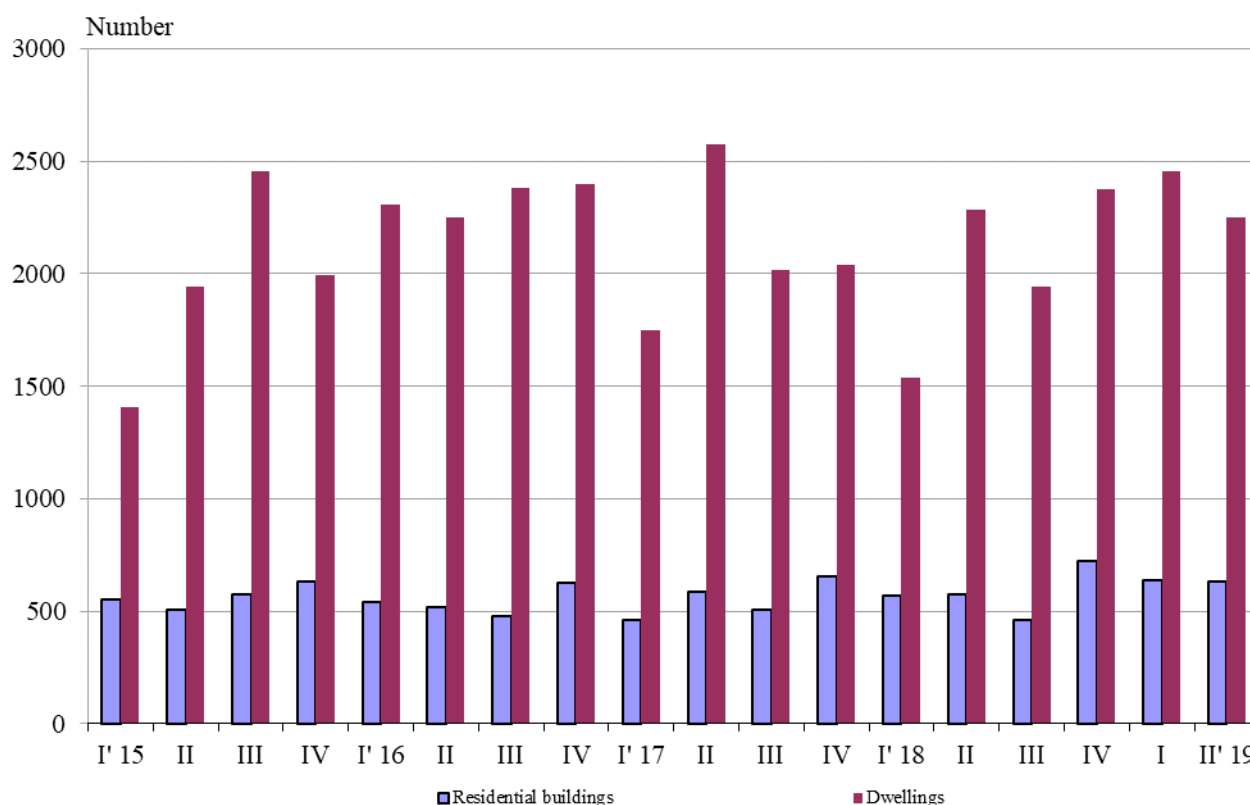




NEWLY BUILT RESIDENTIAL BUILDINGS AND DWELLINGS COMPLETED IN THE SECOND QUARTER OF 2019 (PRELIMINARY DATA)

According to preliminary data of the National Statistical Institute in the second quarter of 2019 the number of newly built residential buildings was 632 and the newly built dwellings in them were 2 250 (Annex, Table 1). Compared to the second quarter of 2018 the buildings were by 60 more (or by 10.5%), and the newly built dwellings in them decreased by 34 or by 1.5% (Figure 1).

Figure 1. Newly built residential buildings and dwellings completed by quarters

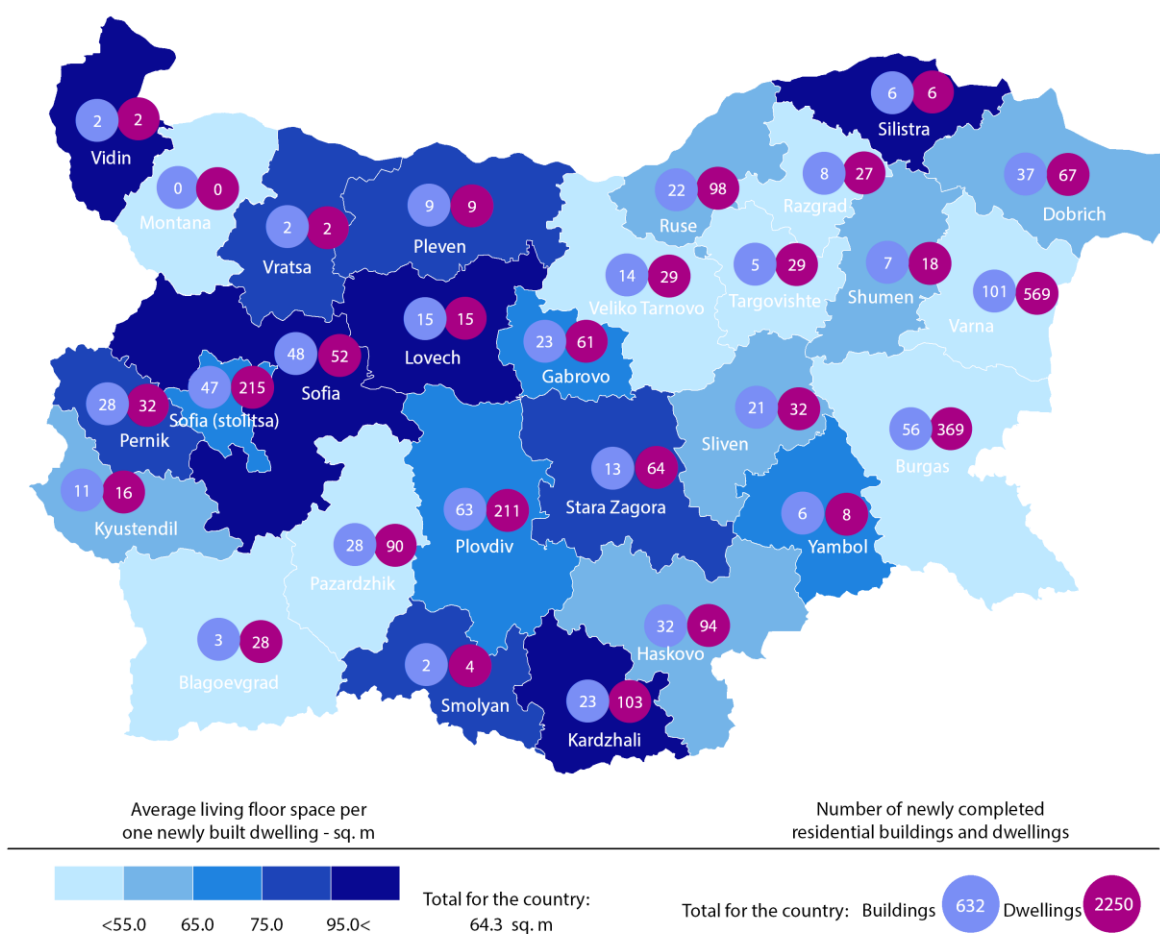


In the second quarter of 2019, 77.4% of the newly built residential buildings were with steel-concrete construction, 19.3% with solid structure, 2.5% with 'other' and 0.8% with panel. Highest is the relative share of houses (75.9%), followed by blocks of flats (14.9%). As compared to the second quarter of 2018 the number of newly built houses, blocks of flats and mixed buildings rose, while the number of newly built country houses dropped (Annex, Table 2).



Highest is the number of residential buildings built in district Varna - 101 residential buildings with 569 dwellings, followed by Plovdiv - 63 residential buildings with 211 dwellings, and Burgas - 56 buildings with 369 dwellings in them (Figure 2).

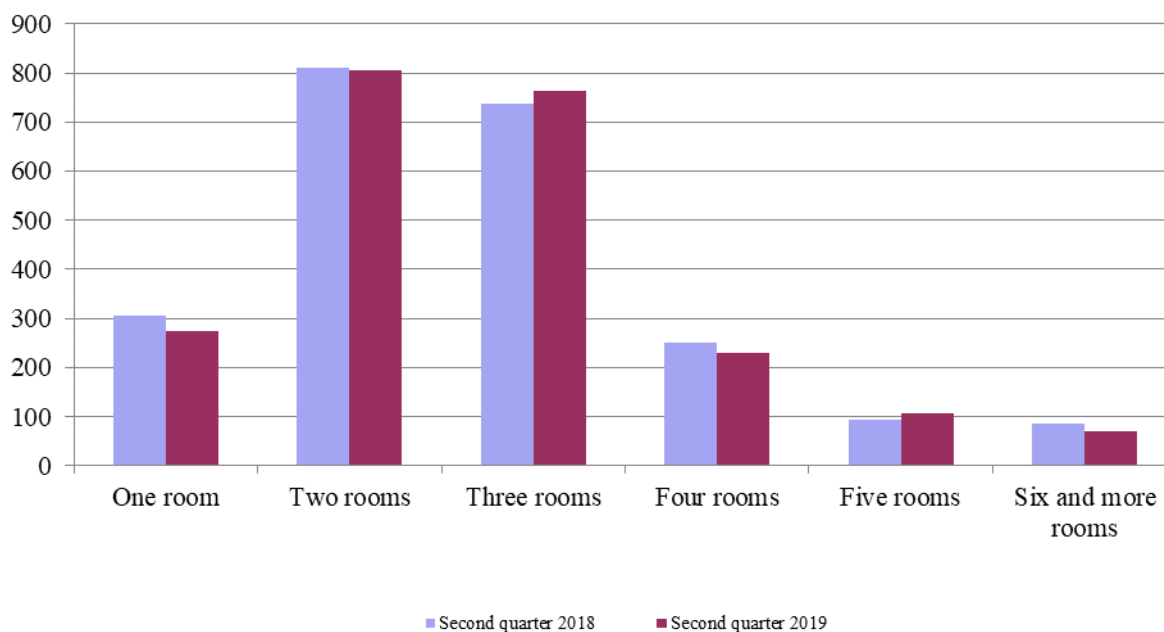
Figure 2. Newly built residential buildings and dwellings completed in second quarter of 2019 by districts



Highest is the number of newly built dwellings with two rooms (35.8%), followed by the number of those with three rooms (34.0%) and lowest is the number of dwellings with six and more rooms - 3.1% (Figure 3).



Figure 3. Newly built dwellings completed by number of rooms



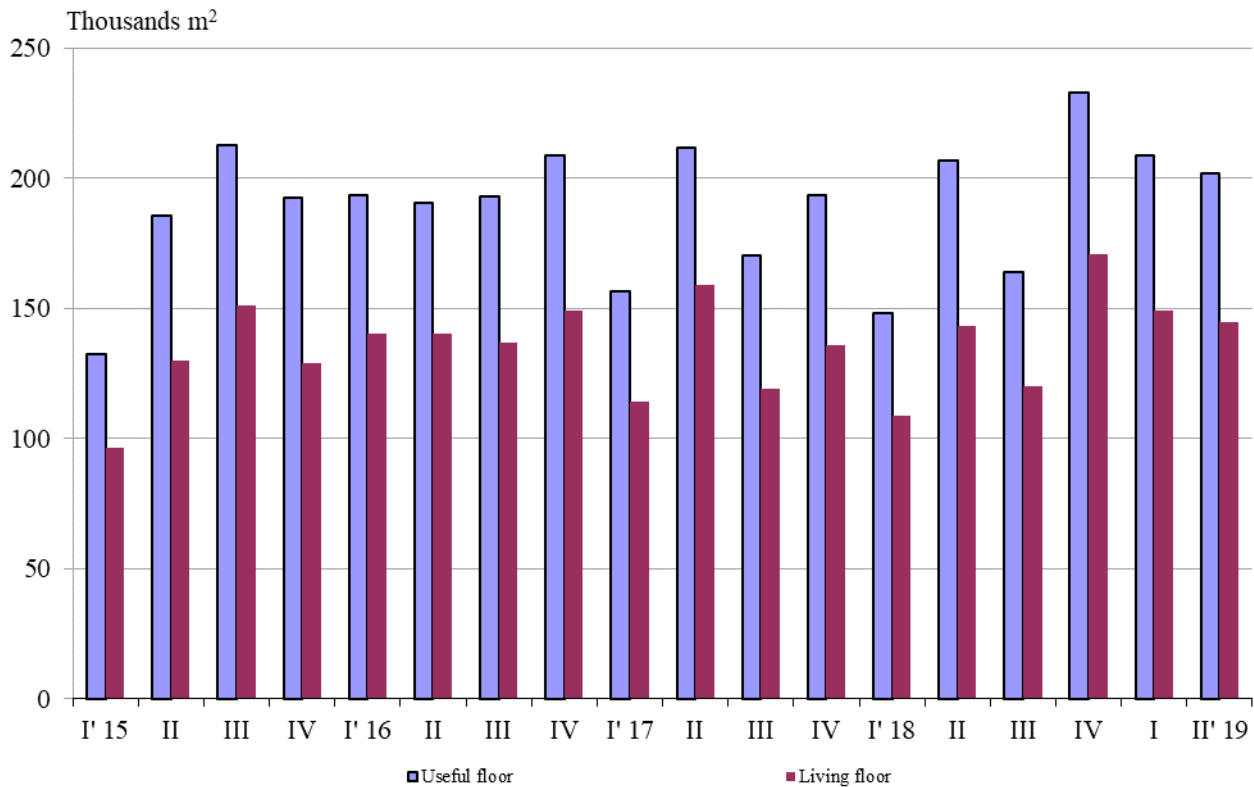
In the second quarter of 2019 **the total useful space** of newly built dwellings was 201.7 thousand sq. m or by 2.5% less, compared to the same quarter of 2018, and **the living floor space** increased (by 14.3%) to 144.8 thousand sq. m (Figure 4).

The **average useful floor space** of a newly built dwelling decreased from 90.6 sq. m in the second quarter of 2018 to 89.6 sq. m in the same quarter of 2019.

The biggest average useful floor space of a newly built dwelling was recorded in districts Vidin - 225.5 sq. m and Silistra - 192.8 sq. m, and the smallest one in Blagoevgrad - 56.2 sq. m and Veliko Tarnovo - 64.3 sq. meters.



Figure 4. Total useful floor space and living floor space of newly built dwellings completed by quarters





Methodological notes

The statistical data about the newly built residential buildings and dwellings are prepared based on quarterly reports of the municipal administrations.

In the scope of survey are newly built residential buildings with approved or valid usage license according to Regulation No. 2/31.07.2003 of the Ministry of Regional Development and Public Works.

Living floor space is the floor space of living rooms, bedrooms, recesses for sleeping, dining rooms, cabinets and libraries of scientists and drawing rooms and the space of kitchens with over 4 sq. m floor space. The space of the kitchens with over 4 sq. m floor area was presented separately before 31.12.2018.

Service floor space is the floor space of rooms and kitchens with less than 4 square meters floor space, vestibules with a portal or other screen, corridors, bathrooms, toilets, larders, hanging closets, other service rooms such as drying-rooms, laundries or balconies regardless their space.

The useful floor space of dwelling is a sum of the living-floor-space and the service floor space.

The average useful floor space is a ratio between the useful floor space and the number of dwellings.



Annex

Table 1

Newly built residential buildings and dwellings completed in the second quarter of 2019¹

Districts	Newly completed residential buildings and dwellings - in numbers		Useful floor area of newly built dwellings - sq. m		
	Buildings	Dwellings	Total	Living floor space, incl. kitchens over 4 sq. m	Service floor space, incl. kitchens under 4 sq. m
Total	632	2250	201654	144779	56875
Blagoevgrad	3	28	1574	1476	98
Burgas	56	369	25872	18229	7643
Varna	101	569	43053	30941	12112
Veliko Tarnovo	14	29	1866	1456	410
Vidin	2	2	451	217	234
Vratsa	2	2	278	169	109
Gabrovo	23	61	7746	4392	3354
Dobrich	37	67	5976	4314	1662
Kardzhali	23	103	12057	11021	1036
Kyustendil	11	16	1420	992	428
Lovech	15	15	2381	1757	624
Montana	-	-	-	-	-
Pazardzhik	28	90	8447	4566	3881
Pernik	28	32	4801	2985	1816
Pleven	9	9	1149	851	298
Plovdiv	63	211	21060	15509	5551
Razgrad	8	27	1977	1208	769
Ruse	22	98	11318	6325	4993
Silistra	6	6	1157	633	524
Sliven	21	32	2623	1963	660
Smolyan	2	4	496	357	139
Sofia	48	52	6888	4951	1937
Sofia (stolitsa)	47	215	20357	16079	4278
Stara Zagora	13	64	6398	5521	877
Targovishte	5	29	2554	1461	1093
Haskovo	32	94	7380	5785	1595
Shumen	7	18	1619	1032	587
Yambol	6	8	756	589	167

¹Preliminary data.



Table 2

Newly built residential buildings by type of building

	(Number)									
	2017				2018				2019 ¹	
	I quarter	II quarter	III quarter	IV quarter	I quarter	II quarter	III quarter	IV quarter	I quarter	II quarter
Total	462	584	505	654	570	572	460	722	635	632
Houses	350	405	366	495	451	420	334	573	469	480
Blocks of flats	63	102	78	89	65	89	91	91	105	94
Mixed buildings	24	16	17	28	21	24	8	19	29	25
Hostels	-	-	-	-	-	-	-	-	1	2
Country houses	24	61	44	40	32	37	27	39	29	30
Buildings of institutional households	1	-	-	2	1	2	-	-	2	1

¹Preliminary data.