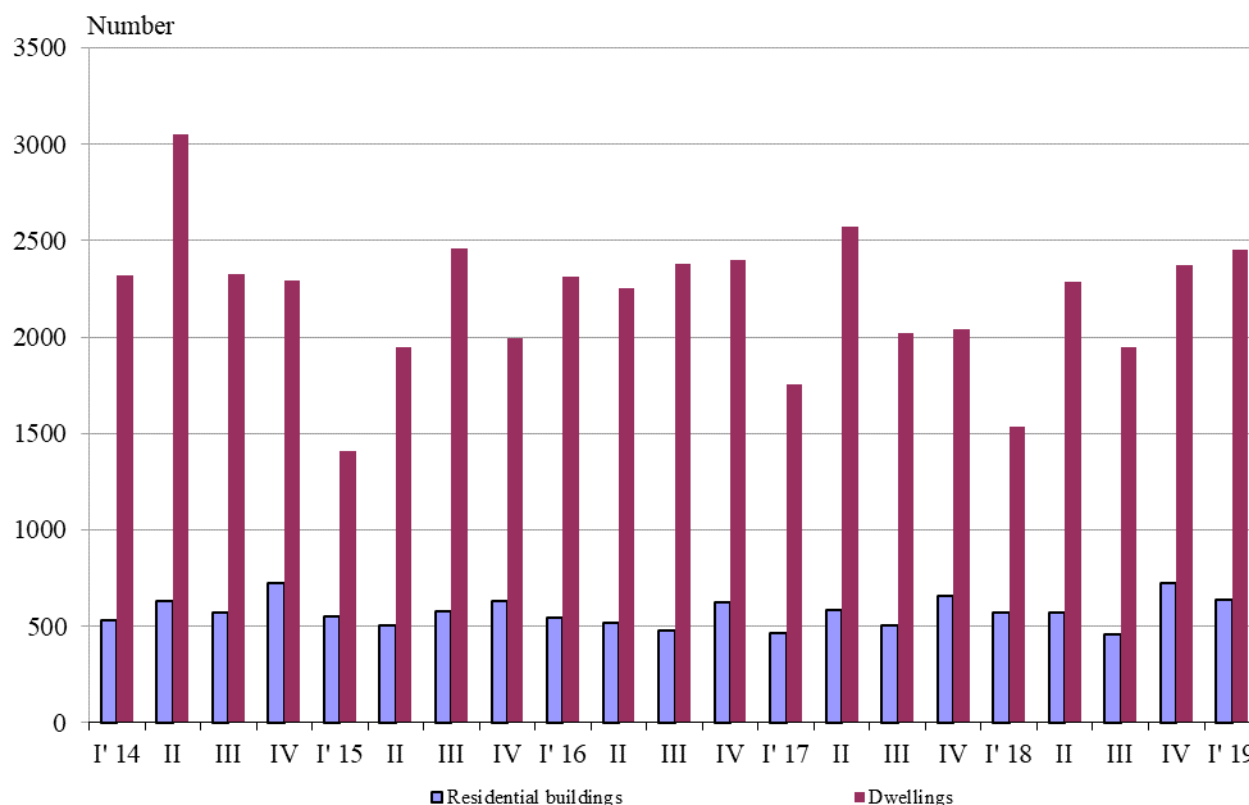




NEWLY BUILT RESIDENTIAL BUILDINGS AND DWELLINGS COMPLETED IN THE FIRST QUARTER OF 2019 (PRELIMINARY DATA)

According to preliminary data of the National Statistical Institute in the first quarter of 2019 the number of newly built residential buildings was 635 and the newly built dwellings in them were 2 453 (Annex, Table 1). Compared to the first quarter of 2018 the buildings were by 65 more (or by 11.4%), and the newly built dwellings in them increased by 918 or by 59.8% (Figure 1).

Figure 1. Newly built residential buildings and dwellings completed by quarters

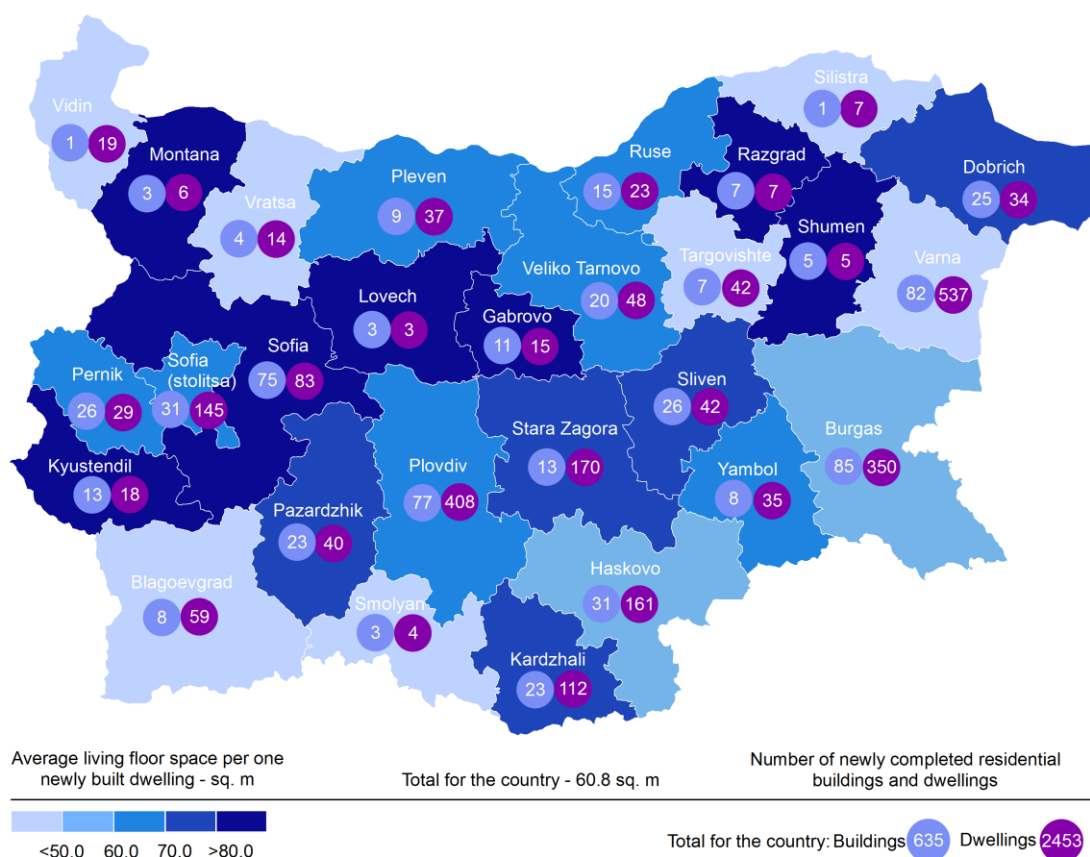


In the first quarter of 2019, 77.2% of the newly built residential buildings were with steel-concrete construction, 19.7% with solid structure, 1.9% with 'other' and 1.2% with panel. Highest is the relative share of houses (73.9%), followed by blocks of flats (16.5%). As compared to the first quarter of 2018 the number of newly built houses, blocks of flats and mixed buildings rose, while the number of newly built country houses dropped (Annex, Table 2).

Highest is the number of residential buildings built in district Burgas - 85 residential buildings with 350 dwellings, followed by Varna - 82 residential buildings with 537 dwellings and Plovdiv - 77 buildings with 408 dwellings in them (Figure 2).



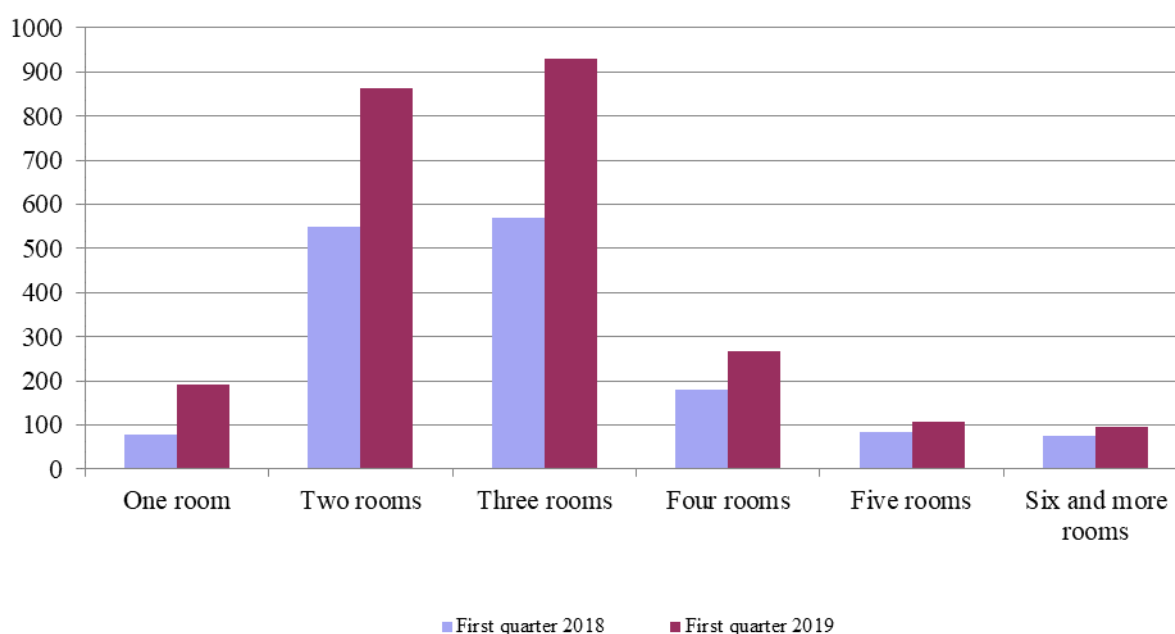
Figure 2. Newly built residential buildings and dwellings completed in first quarter of 2019 by districts



Highest is the number of newly built dwellings with three rooms (38.0%), followed by the number of those with two rooms (35.1%) and lowest is the number of dwellings with six and more rooms - 3.9% (Figure 3).



Figure 3. Newly built dwellings completed by number of rooms



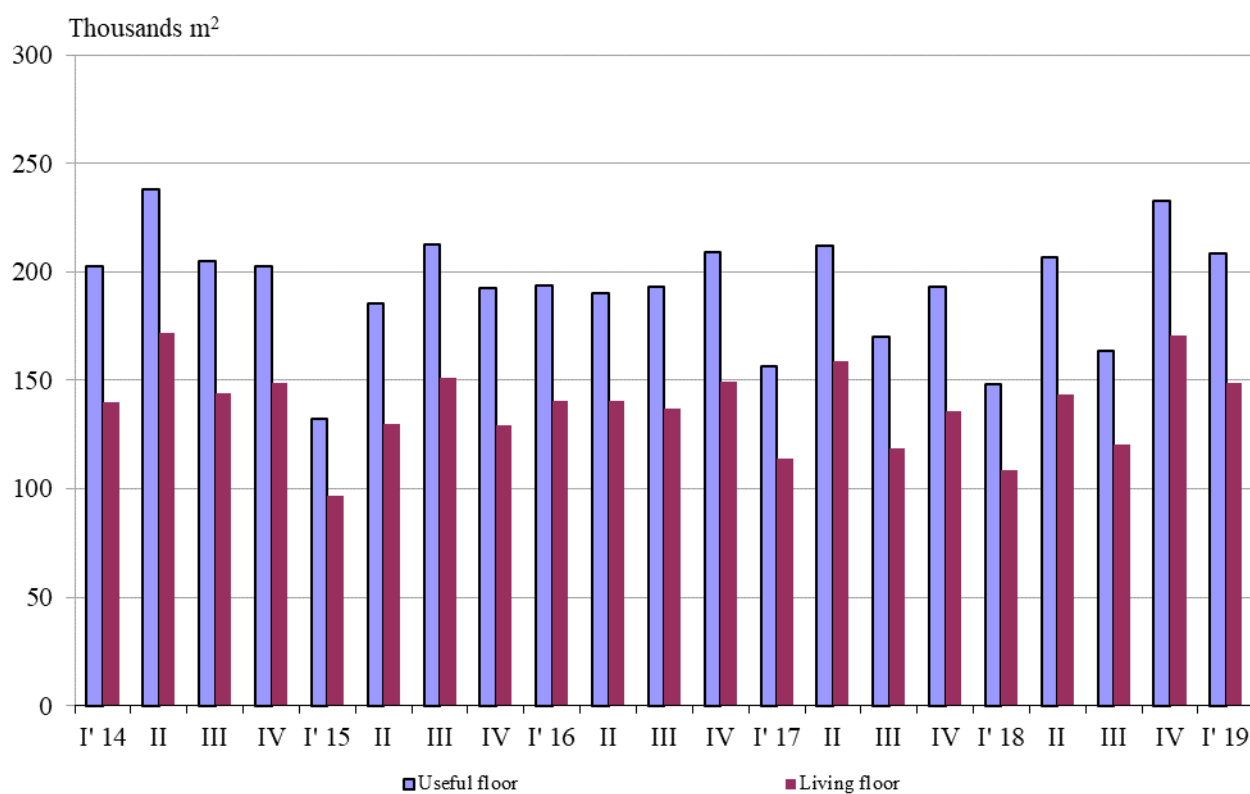
In the first quarter of 2019 **the total useful space** of newly built dwellings was 208.6 thousand sq. m or by 40.9% more, compared to the same quarter of 2018, and **the living floor space** increased (by 36.9%) to 149.0 thousand sq. m (Figure 4).

The **average useful floor space** of a newly built dwelling decreased from 96.4 sq. m in the first quarter of 2018 to 85.0 sq. m in the same quarter of 2019.

The biggest average useful floor space of a newly built dwelling was recorded in districts Shumen - 184.8 sq. m and Gabrovo - 174.0 sq. m, and the smallest one in Silistra - 20.7 sq. m and Blagoevgrad - 37.3 sq. meters.



Figure 4. Total useful floor space and living floor space of newly built dwellings completed by quarters





Methodological notes

The statistical data about the newly built residential buildings and dwellings are prepared based on quarterly reports of the municipal administrations.

In the scope of survey are newly built residential buildings with approved or valid usage license according to Regulation No. 2/31.07.2003 of the Ministry of Regional Development and Public Works.

Living floor space is the floor space of living rooms, bedrooms, recesses for sleeping, dining rooms, cabinets and libraries of scientists and drawing rooms and the space of kitchens with over 4 sq. m floor space. The space of the kitchens with over 4 sq. m floor area was presented separately before 31.12.2018.

Service floor space is the floor space of rooms and kitchens with less than 4 square meters floor space, vestibules with a portal or other screen, corridors, bathrooms, toilets, ladders, hanging closets, other service rooms such as drying-rooms, laundries or balconies regardless their space.

The useful floor space of dwelling is a sum of the living-floor-space and the service floor space.

The average useful floor space is a ratio between the useful floor space and the number of dwellings.



Annex

Table 1

Newly built residential buildings and dwellings completed in the first quarter of 2019¹

Districts	Newly completed residential buildings and dwellings - in numbers		Useful floor area of newly built dwellings - sq. m		
	Buildings	Dwellings	Total	Living floor space, incl. kitchens over 4 sq. m	Service floor space, incl. kitchens under 4 sq. m
Total	635	2453	208600	149042	59558
Blagoevgrad	8	59	2198	1838	360
Burgas	85	350	26951	19178	7773
Varna	82	537	40616	26784	13832
Veliko Tarnovo	20	48	4570	3068	1502
Vidin	1	19	761	685	76
Vratsa	4	14	1135	686	449
Gabrovo	11	15	2610	1251	1359
Dobrich	25	34	3626	2709	917
Kardzhali	23	112	9373	8134	1239
Kyustendil	13	18	2416	1915	501
Lovech	3	3	494	305	189
Montana	3	6	982	836	146
Pazardzhik	23	40	5397	3168	2229
Pernik	26	29	3277	2014	1263
Pleven	9	37	2770	2333	437
Plovdiv	77	408	33606	24962	8644
Razgrad	7	7	940	589	351
Ruse	15	23	2344	1509	835
Silistra	1	7	145	121	24
Sliven	26	42	5167	3185	1982
Smolyan	3	4	242	194	48
Sofia	75	83	10935	7485	3450
Sofia (stolitsa)	31	145	11912	10072	1840
Stara Zagora	13	170	15041	12055	2986
Targovishte	7	42	3427	1887	1540
Haskovo	31	161	13674	9293	4381
Shumen	5	5	924	462	462
Yambol	8	35	3067	2324	743

¹ Preliminary data.



Table 2

**Newly built residential buildings by type
of building**

(Number)

	2017				2018				2019 ¹
	I quarter	II quarter	III quarter	IV quarter	I quarter	II quarter	III quarter	IV quarter	I quarter
Total	462	584	505	654	570	572	460	722	635
Houses	350	405	366	495	451	420	334	573	469
Blocks of flats	63	102	78	89	65	89	91	91	105
Mixed buildings	24	16	17	28	21	24	8	19	29
Hostels	-	-	-	-	-	-	-	-	1
Country houses	24	61	44	40	32	37	27	39	29
Buildings of institutional households	1	-	-	2	1	2	-	-	2

¹ Preliminary data.