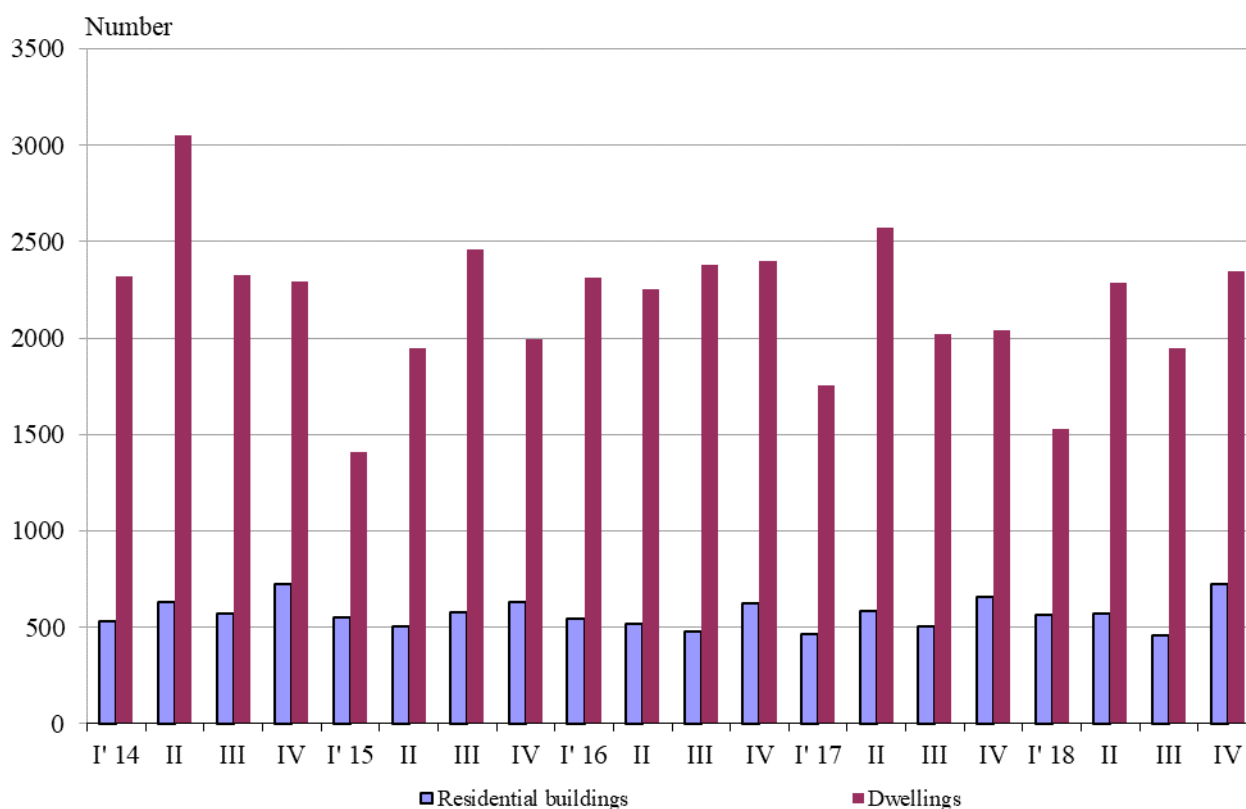




## NEWLY BUILT RESIDENTIAL BUILDINGS AND DWELLINGS COMPLETED IN THE FOURTH QUARTER OF 2018 (PRELIMINARY DATA)

According to preliminary data of the National Statistical Institute in the fourth quarter of 2018 the number of newly built residential buildings was 721 and the newly built dwellings in them were 2 345 (Annex, Table 1). Compared to the fourth quarter of 2017 the buildings were by 67 more (or by 10.2%), and the newly built dwellings in them increased by 304 or by 14.9% (Figure 1).

**Figure 1. Newly built residential buildings and dwellings completed by quarters**

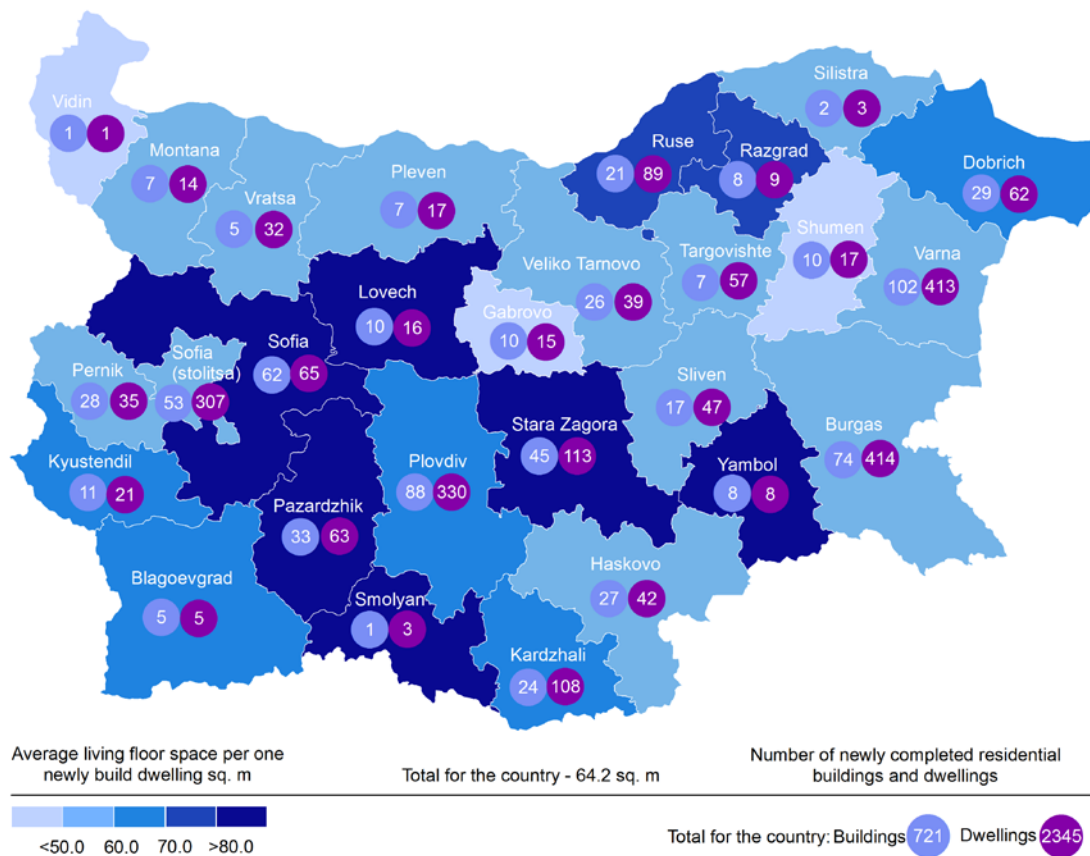


In the fourth quarter of 2018, 74.8% of the newly built residential buildings were with steel-concrete construction, 23.1% with solid structure, 1.4% with 'other' and 0.7% with panel. Highest is the relative share of houses (79.5%) followed by blocks of flats (12.3%). Compared to the fourth quarter of 2017, the number of newly built houses rose, the number of blocks of flats had no change, while the newly built mixed buildings dropped (Annex, Table 2).



Highest is the number of residential buildings built in district Varna - 102 buildings with 413 dwellings in them, followed by Plovdiv - 88 residential buildings with 330 dwellings and Burgas - 74 residential buildings with 414 dwellings (Figure 2).

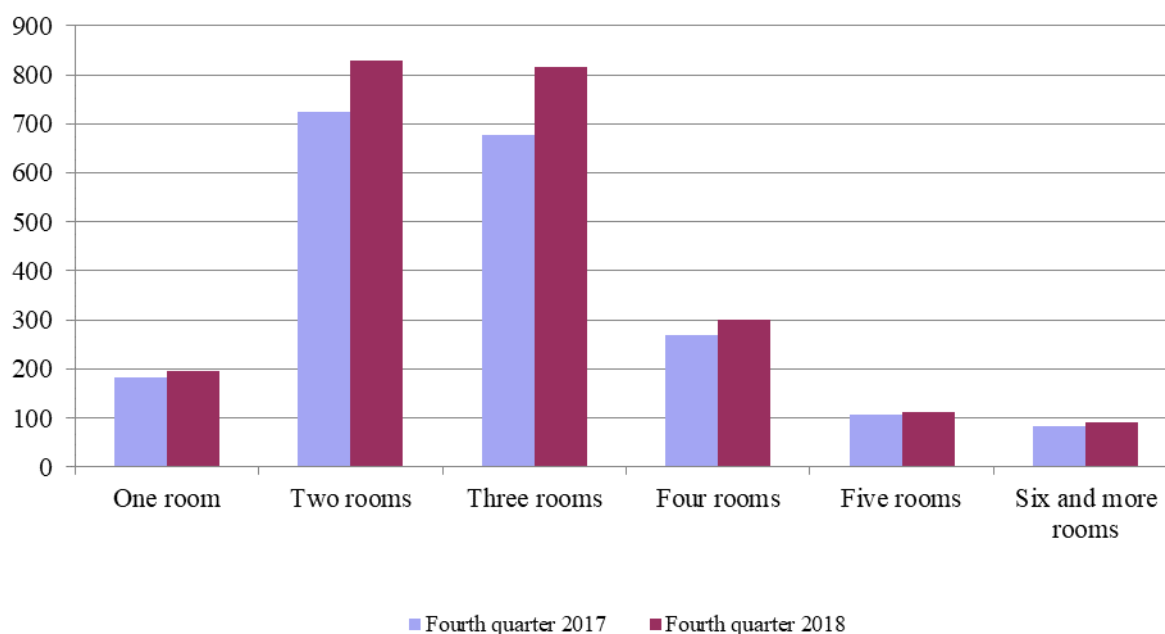
**Figure 2. Newly built residential buildings and dwellings completed in fourth quarter of 2018 by districts**



Highest is the number of newly built dwellings with two rooms (35.4%), followed by the number of those with three rooms (34.8%) and lowest is the number of dwellings with six and more rooms - 3.8% (Figure 3).



**Figure 3. Newly built dwellings completed by number of rooms**



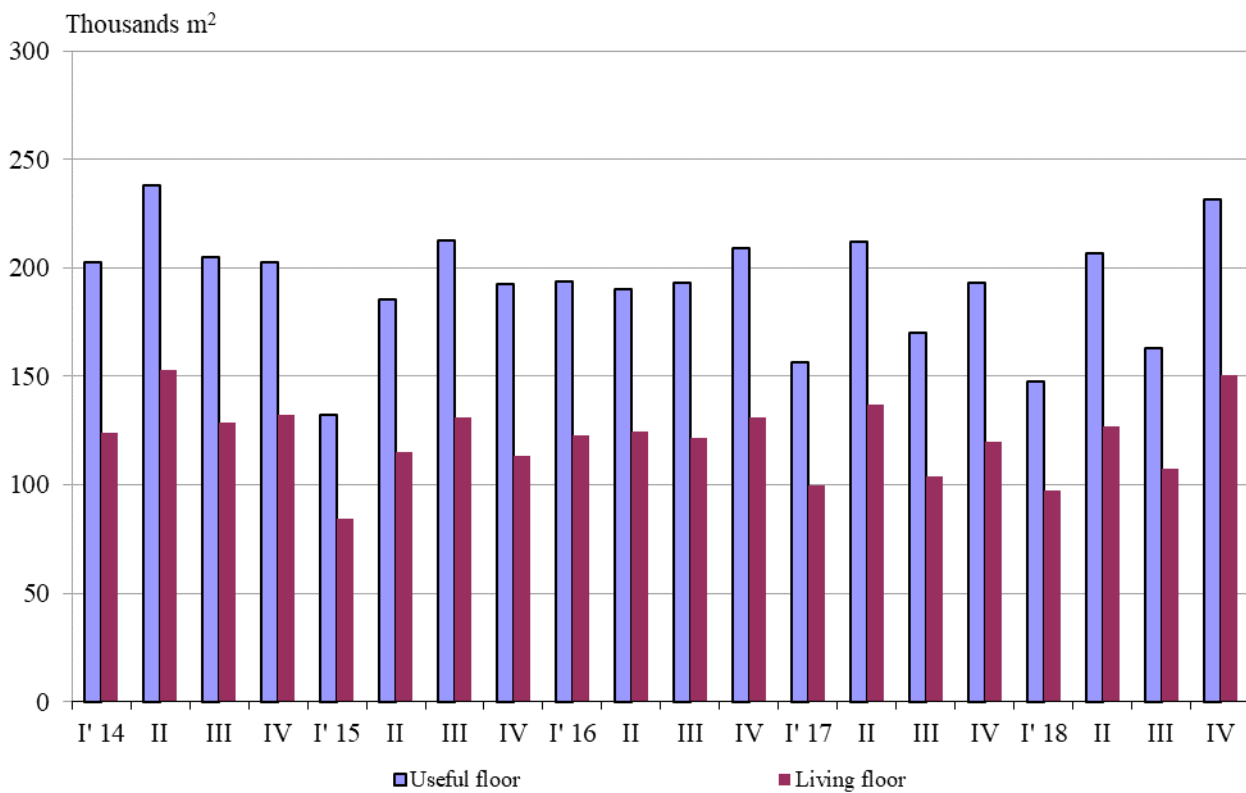
In the fourth quarter of 2018 **the total useful space** of newly built dwellings was 231.2 thousand sq. m or 19.6% more compared to the same quarter of 2017, and **the living floor space** increased by 25.9% and reached 150.6 thousand sq. m (Figure 4).

The **average useful floor space** of a newly built dwelling increased from 94.7 sq. m in the fourth quarter of 2017 to 98.6 sq. m in the same quarter of 2018.

The biggest average useful floor space of a newly built dwelling was recorded in districts Razgrad - 166.3 sq. m and Yambol - 151.9 sq. m, and the smallest one in Pleven - 73.3 sq. m and Shumen - 76.1 sq. meters.



**Figure 4. Total useful floor space and living floor space of newly built dwellings completed by quarters**





## Methodological notes

The statistical data about the newly built residential buildings and dwellings are prepared based on quarterly reports of the municipal administrations.

In the scope of survey are newly built residential buildings with approved or valid usage license according to Regulation No. 2/31.07.2003 of the Ministry of Regional Development and Public Works.

**Living floor space** is the floor space of living rooms, bedrooms, recesses for sleeping, dining rooms, cabinets and libraries of scientists and drawing rooms but does not include the space of kitchens.

**Service floor space** is the floor space of rooms and kitchens with less than 4 square meters floor space, vestibules with a portal or other screen, corridors, bathrooms, toilets, larders, hanging closets, other service rooms such as drying-rooms, laundries or balconies regardless their space. The space of kitchens with over 4 sq. m floor space is shown separately.

**The useful floor space** of dwelling is a sum of the living-floor-space, the service floor space and the space of the kitchens.

**The average useful floor space** is a ratio between the useful floor space and the number of dwellings.



## Annex

**Table 1**

### Newly built residential buildings and dwellings completed in the fourth quarter of 2018<sup>1</sup>

Districts	Newly completed residential buildings and dwellings - in numbers		Useful floor area of newly built dwellings - sq. m			
	Buildings	Dwellings	Total	Living floor space	Service floor space	Area of kitchens
<b>Total</b>	<b>721</b>	<b>2345</b>	<b>231207</b>	<b>150598</b>	<b>61273</b>	<b>19336</b>
Blagoevgrad	5	5	621	315	148	158
Burgas	74	414	37612	24025	10404	3183
Varna	102	413	37728	23181	12143	2404
Veliko Tarnovo	26	39	3840	2133	1117	590
Vidin	1	1	84	49	25	10
Vratsa	5	32	2507	1628	529	350
Gabrovo	10	15	1238	665	449	124
Dobrich	29	62	6178	4053	1596	529
Kardzhali	24	108	10470	6663	2622	1185
Kyustendil	11	21	1818	1378	244	196
Lovech	10	16	1946	1332	386	228
Montana	7	14	1763	771	838	154
Pazardzhik	33	63	9352	5158	3271	923
Pernik	28	35	3303	1891	834	578
Pleven	7	17	1246	883	278	85
Plovdiv	88	330	31577	20528	8133	2916
Razgrad	8	9	1497	684	710	103
Ruse	21	89	11299	6405	4045	849
Silistra	2	3	314	179	97	38
Sliven	17	47	4098	2689	1026	383
Smolyan	1	3	390	255	99	36
Sofia	62	65	9854	6129	2834	891
Sofia (stolitsa)	53	307	25057	17917	4903	2237
Stara Zagora	45	113	15585	14604	525	456
Targovishte	7	57	5535	2964	2525	46
Haskovo	27	42	3787	2387	967	433
Shumen	10	17	1293	838	326	129
Yambol	8	8	1215	894	199	122

<sup>1</sup> Preliminary data.



Table 2

Newly built residential buildings by type of building

(Number)

	2016				2017				2018 <sup>1</sup>			
	I quarter	II quarter	III quarter	IV quarter	I quarter	II quarter	III quarter	IV quarter	I quarter	II quarter	III quarter	IV quarter
<b>Total</b>	<b>541</b>	<b>519</b>	<b>476</b>	<b>625</b>	<b>462</b>	<b>584</b>	<b>505</b>	<b>654</b>	<b>565</b>	<b>573</b>	<b>454</b>	<b>721</b>
Houses	382	376	322	465	350	405	366	495	447	421	328	573
Blocks of flats	95	80	104	95	63	102	78	89	65	89	92	89
Mixed buildings	20	22	14	35	24	16	17	28	20	24	7	19
Hostels	1	2	-	2	-	-	-	-	-	-	-	-
Country houses	40	38	34	28	24	61	44	40	32	37	27	40
Buildings of institutional households	3	1	2	-	1	-	-	2	1	2	-	-

<sup>1</sup> Preliminary data.