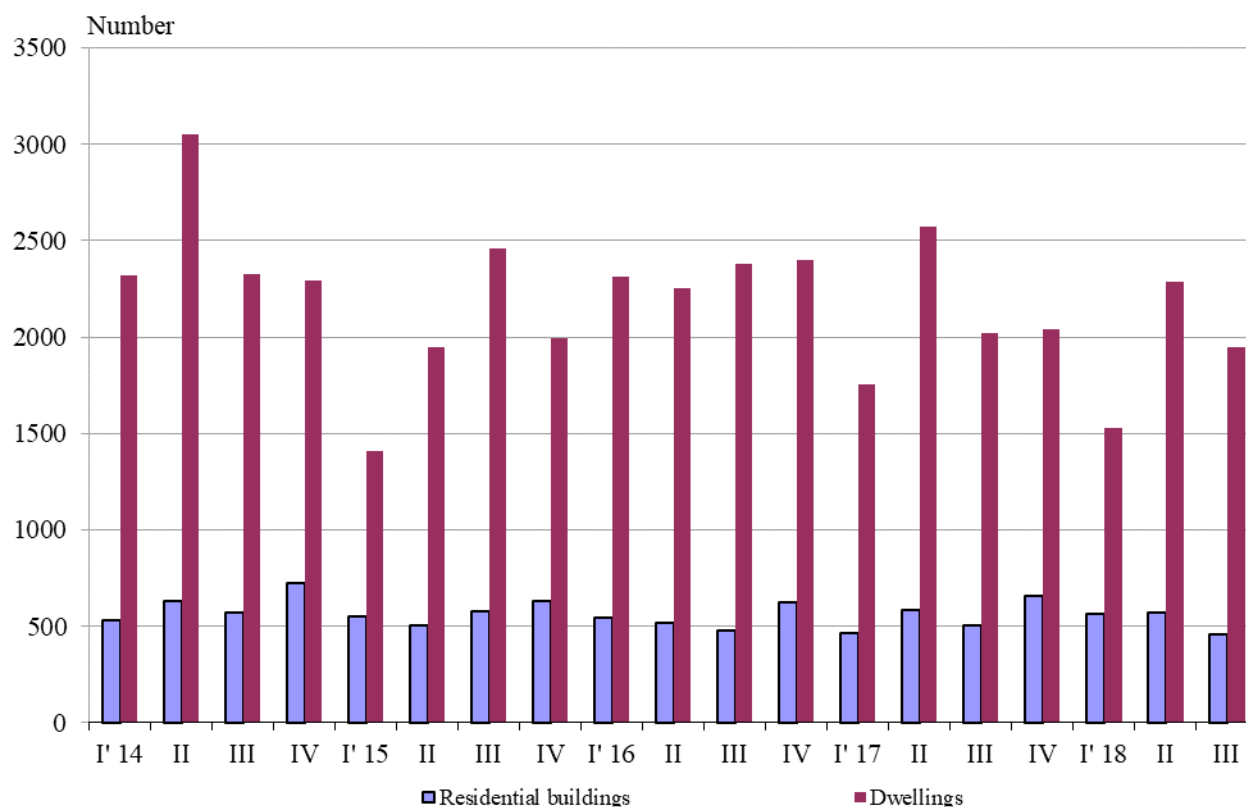




NEWLY BUILT RESIDENTIAL BUILDINGS AND DWELLINGS COMPLETED IN THE THIRD QUARTER OF 2018 (PRELIMINARY DATA)

According to preliminary data of the National Statistical Institute in the third quarter of 2018 the number of newly built residential buildings was 454 and the newly built dwellings in them were 1 944 (Annex, Table 1). Compared to the third quarter of 2017 the buildings were by 51 less (or by 10.1%), and the newly built dwellings in them decreased by 73 or by 3.6% (Figure 1).

Figure 1. Newly built residential buildings and dwellings completed by quarters

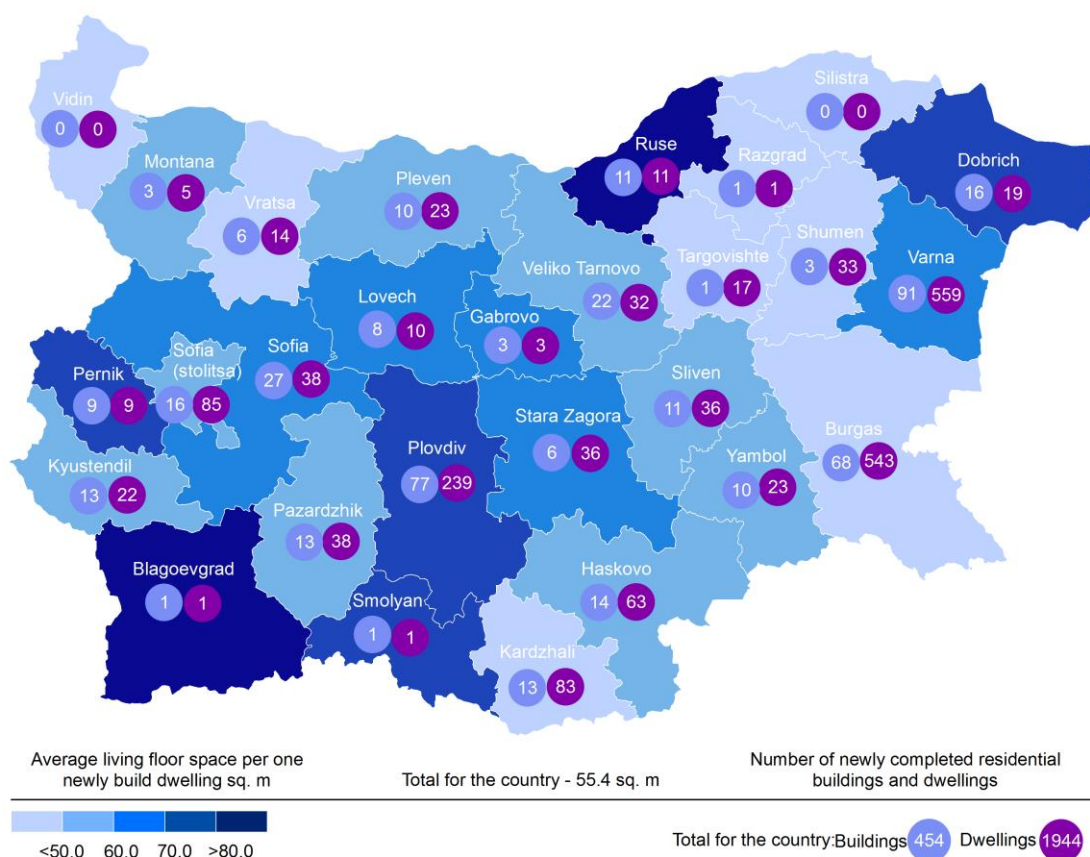


In the third quarter of 2018, 71.6% of the newly built residential buildings were with steel-concrete construction, 25.1% with solid structure, 2.9% with 'other' and 0.4% with panel. Highest is the relative share of houses (72.2%) followed by blocks of flats (20.3%). As compared to the third quarter of 2017, the number of newly built houses, country houses and mixed buildings dropped, while the number of newly built blocks of flats rose (Annex, Table 2).

Highest is the number of residential buildings built in district Varna - 91 buildings with 559 dwellings in them, followed by Plovdiv - 77 residential buildings with 239 dwellings and Burgas - 68 residential buildings with 543 dwellings (Figure 2).



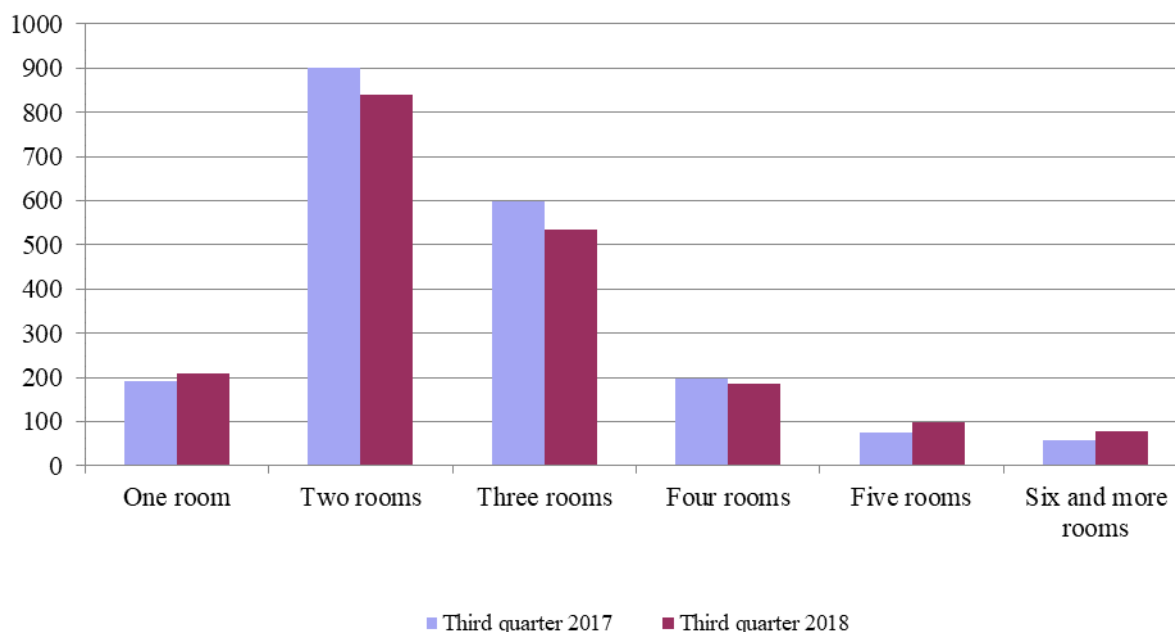
Figure 2. Newly built residential buildings and dwellings completed in third quarter of 2018 by districts



Highest is the number of newly built dwellings with two rooms (43.3%), followed by the number of those with three rooms (27.5%) and lowest is the number of dwellings with six and more rooms - 3.9% (Figure 3).



Figure 3. Newly built dwellings completed by number of rooms



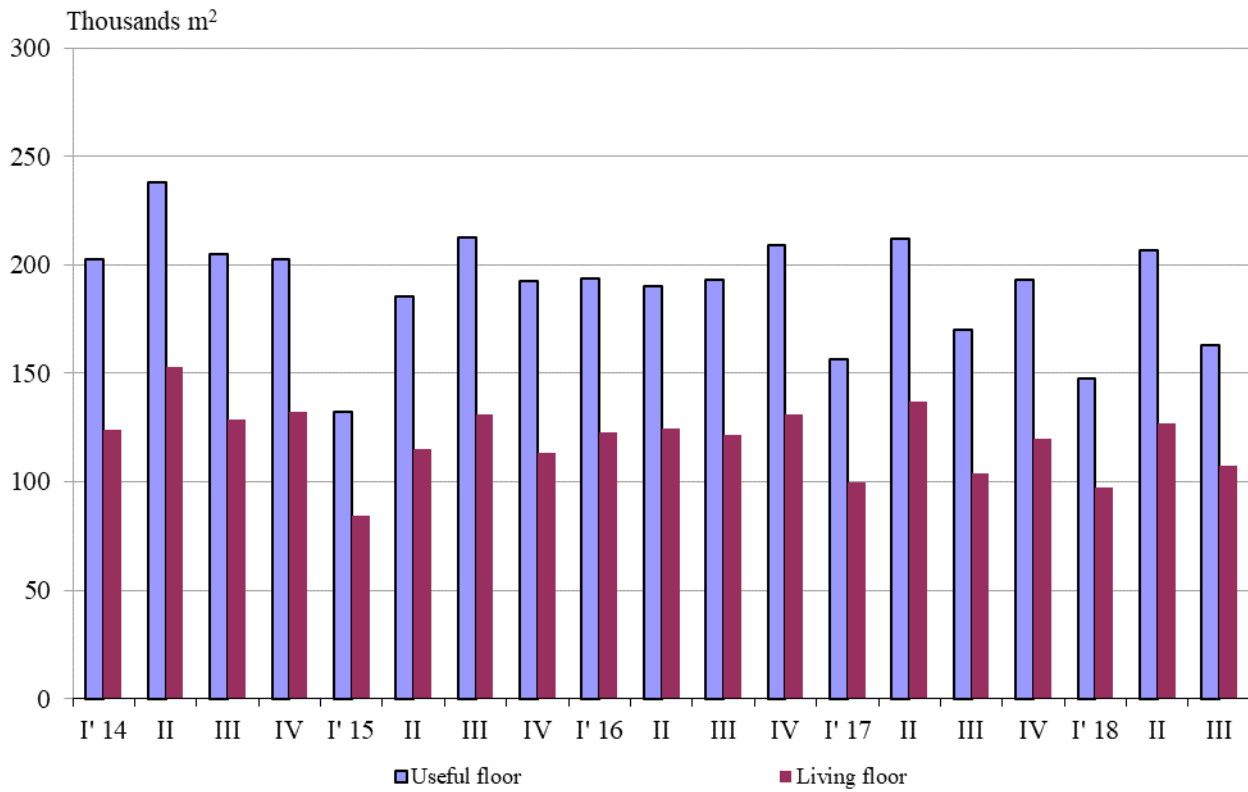
In the third quarter of 2018 **the total useful space** of newly built dwellings was 162.7 thousand sq. m or 4.5% less compared to the same quarter of 2017, while **the living floor space** increased (by 3.5%) and reached 107.6 thousand sq. m (Figure 4).

The **average useful floor space** of a newly built dwelling decreased from 84.4 sq. m in the third quarter of 2017 to 83.7 sq. m in the same quarter of 2018.

The biggest average useful floor space of a newly built dwelling was recorded in districts Ruse - 189.5 sq. m and Blagoevgrad – 134.0 sq. m, and the smallest one in Razgrad - 40.0 sq. m and Burgas - 67.9 sq. meters.



Figure 4. Total useful floor space and living floor space of newly built dwellings completed by quarters





Methodological notes

The statistical data about the newly built residential buildings and dwellings are prepared based on quarterly reports of the municipal administrations.

In the scope of survey are newly built residential buildings with approved or valid usage license according to Regulation No. 2/31.07.2003 of the Ministry of Regional Development and Public Works.

Living floor space is the floor space of living rooms, bedrooms, recesses for sleeping, dining rooms, cabinets and libraries of scientists and drawing rooms but does not include the space of kitchens.

Service floor space is the floor space of rooms and kitchens with less than 4 square meters floor space, vestibules with a portal or other screen, corridors, bathrooms, toilets, larders, hanging closets, other service rooms such as drying-rooms, laundries or balconies regardless their space. The space of kitchens with over 4 sq. m floor space is shown separately.

The useful floor space of dwelling is a sum of the living-floor-space, the service floor space and the space of the kitchens.

The average useful floor space is a ratio between the useful floor space and the number of dwellings.



Annex

Table 1

Newly built residential buildings and dwellings completed in the third quarter of 2018¹

Districts	Newly completed residential buildings and dwellings - in numbers		Useful floor area of newly built dwellings - sq. m			
	Buildings	Dwellings	Total	Living floor space	Service floor space	Area of kitchens
Total	454	1944	162669	107639	43279	11751
Blagoevgrad	1	1	134	101	27	6
Burgas	68	543	36860	22684	11029	3147
Varna	91	559	45893	33914	10644	1335
Veliko Tarnovo	22	32	2731	1695	719	317
Vidin	-	-	-	-	-	-
Vratsa	6	14	1127	699	251	177
Gabrovo	3	3	365	197	133	35
Dobrich	16	19	2315	1426	608	281
Kardzhali	13	83	8667	3915	3462	1290
Kyustendil	13	22	1637	1265	119	253
Lovech	8	10	1074	675	277	122
Montana	3	5	622	291	274	57
Pazardzhik	13	38	4075	2241	1491	343
Pernik	9	9	973	688	164	121
Pleven	10	23	2189	1289	616	284
Plovdiv	77	239	23744	16808	5085	1851
Razgrad	1	1	40	26	14	-
Ruse	11	11	2085	1329	608	148
Silistra	-	-	-	-	-	-
Sliven	11	36	2975	1895	906	174
Smolyan	1	1	113	76	27	10
Sofia	27	38	4135	2569	1189	377
Sofia (stolitsa)	16	85	7233	4947	2240	46
Stara Zagora	6	36	3159	2177	507	475
Targovishte	1	17	1235	738	497	-
Haskovo	14	63	4749	3209	984	556
Shumen	3	33	2487	1503	844	140
Yambol	10	23	2052	1282	564	206

¹ Preliminary data.



Table 2

Newly built residential buildings by type of building

(Number)

	2016				2017				2018 ¹		
	I quarter	II quarter	III quarter	IV quarter	I quarter	II quarter	III quarter	IV quarter	I quarter	II quarter	III quarter
Total	541	519	476	625	462	584	505	654	565	573	454
Houses	382	376	322	465	350	405	366	495	447	421	328
Blocks of flats	95	80	104	95	63	102	78	89	65	89	92
Mixed buildings	20	22	14	35	24	16	17	28	20	24	7
Hostels	1	2	-	2	-	-	-	-	-	-	-
Country houses	40	38	34	28	24	61	44	40	32	37	27
Buildings of institutional households	3	1	2	-	1	-	-	2	1	2	-

¹Preliminary data.