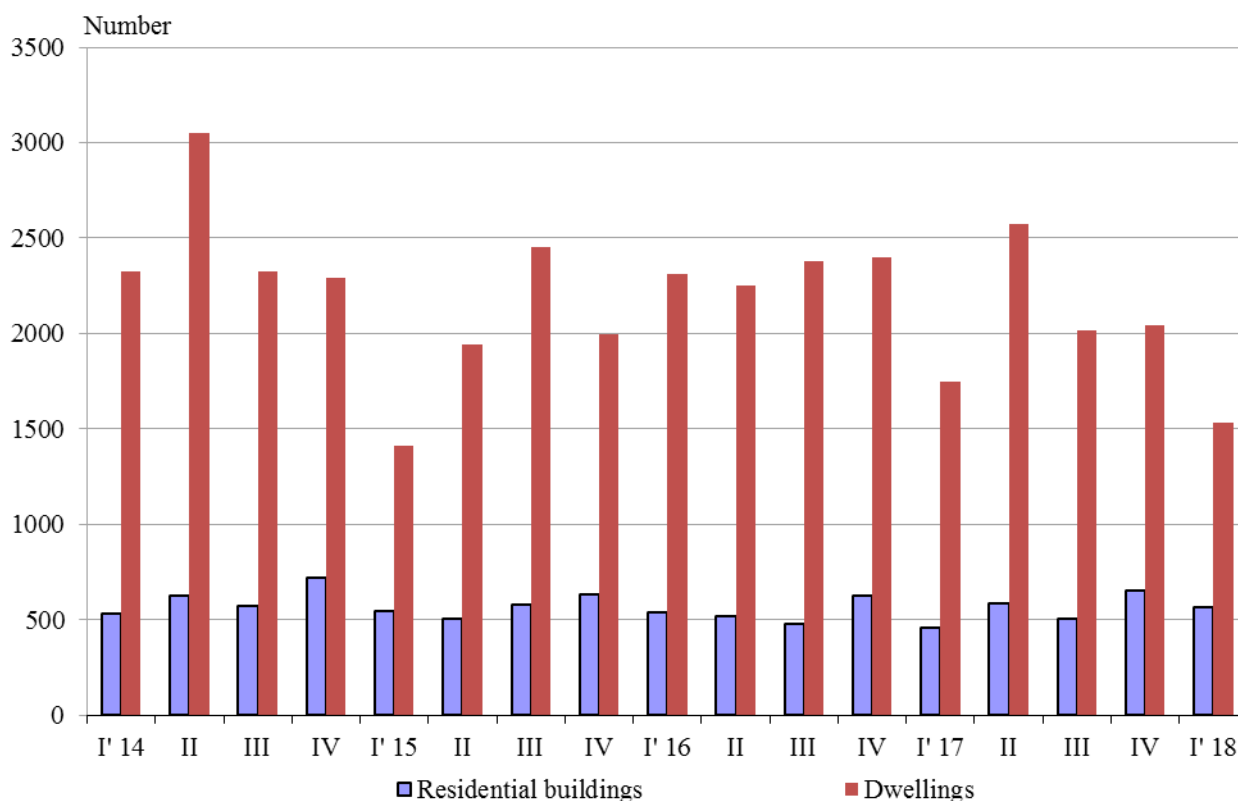




## NEWLY BUILT RESIDENTIAL BUILDINGS AND DWELLINGS COMPLETED IN THE FIRST QUARTER OF 2018 (PRELIMINARY DATA)

According to preliminary data of the National Statistical Institute in the first quarter of 2018 the number of newly built residential buildings was 565 and the newly built dwellings in them were 1 530 (Annex, Table 1). Compared to the first quarter of 2017 the buildings were by 103 more (or by 22.3%), while the newly built dwellings in them decreased by 221 or by 12.6% (Figure 1).

**Figure 1. Newly built residential buildings and dwellings completed by quarters**

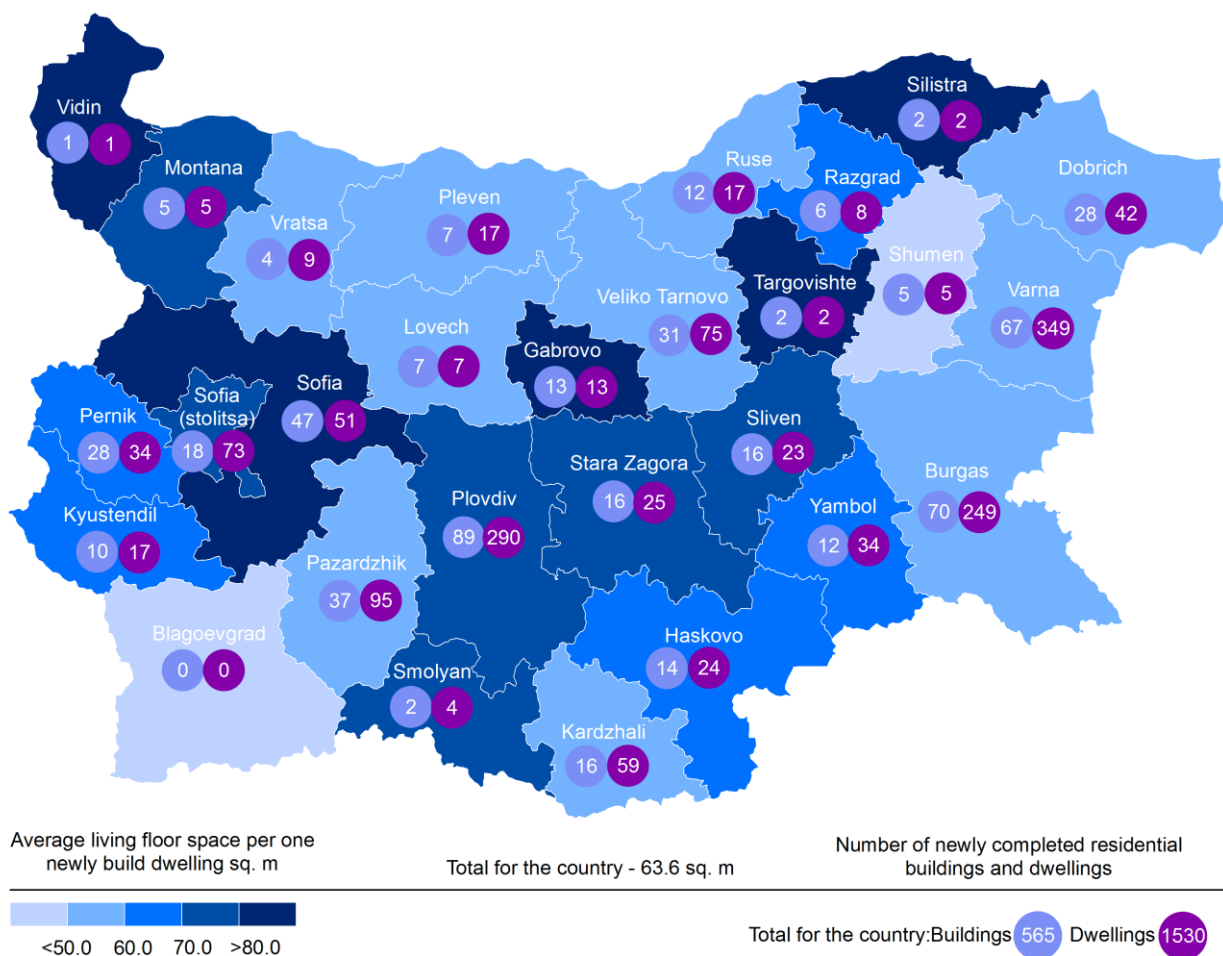


In the first quarter of 2018, 76.6% of the newly built residential buildings were with steel-concrete construction, 19.1% with solid structure, 3.4% with 'other' and 0.9% with panel. Highest is the relative share of houses (79.1%) followed by blocks of flats (11.5%). As compared to the first quarter of 2017 the number of newly built houses, blocks of flats and country houses rose, while the number of newly built mixed buildings dropped (Annex, Table 2).

Highest is the number of residential buildings built in district Plovdiv - 89 buildings with 290 dwellings in them, followed by Burgas - 70 residential buildings with 249 dwellings and Varna - 67 residential buildings with 349 dwellings (Figure 2).



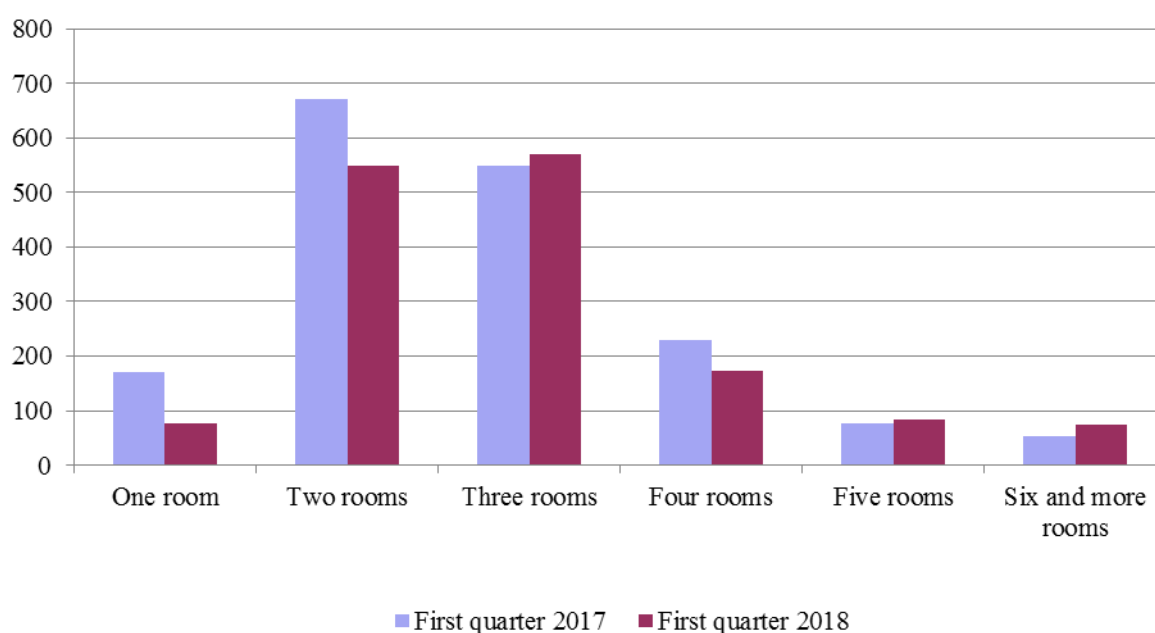
**Figure 2. Newly built residential buildings and dwellings completed in first quarter of 2018 by districts**



Highest is the number of newly built dwellings with three rooms (37.3%), followed by the number of those with two rooms (35.8%) and lowest is the number of dwellings with six and more rooms - 4.9% (Figure 3).



**Figure 3. Newly built dwellings completed by number of rooms**



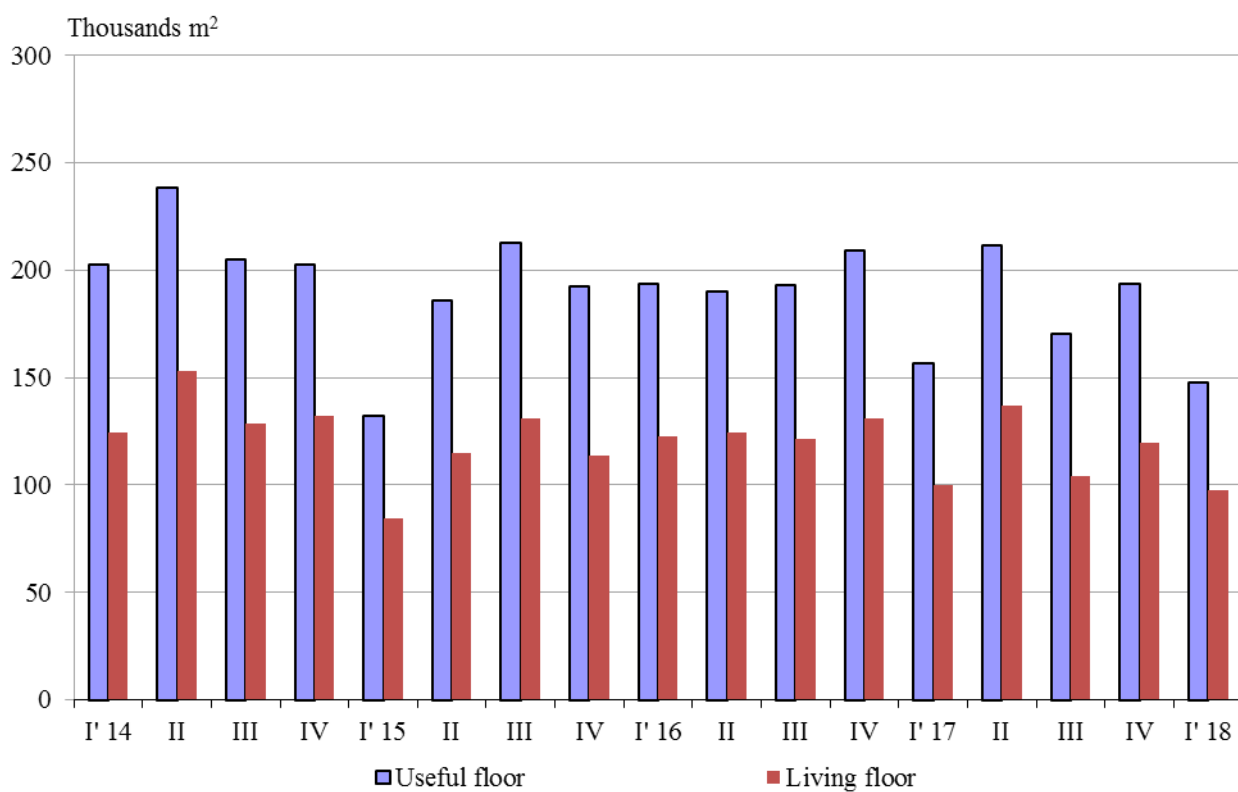
In the first quarter of 2018 **the total useful space** of newly built dwellings was 147.7 thousand sq. m or 5.6% less compared to the same quarter of 2017, **the living floor space** decreased (by 2.6%) to 97.3 thousand sq. m (Figure 4).

The **average useful floor space** of a newly built dwelling increased from 89.3 sq. m in the first quarter of 2017 to 96.6 sq. m in the same quarter of 2018.

The biggest average useful floor space of a newly built dwelling was recorded in districts Silistra - 258.0 sq. m and Targovishte - 240.5 sq. m, and the smallest one in Pleven - 73.3 sq. m and Vratsa - 79.0 sq. meters.



**Figure 4. Total useful floor space and living floor space of newly built dwellings completed by quarters**





## Methodological notes

The statistical data about the newly built residential buildings and dwellings are prepared based on quarterly reports of the municipal administrations.

In the scope of survey are newly built residential buildings with approved or valid usage license according to Regulation No. 2/31.07.2003 of the Ministry of Regional Development and Public Works.

**Living floor space** is the floor space of living rooms, bedrooms, recesses for sleeping, dining rooms, cabinets and libraries of scientists and drawing rooms but does not include the space of kitchens.

**Service floor space** is the floor space of rooms and kitchens with less than 4 square meters floor space, vestibules with a portal or other screen, corridors, bathrooms, toilets, larders, hanging closets, other service rooms such as drying-rooms, laundries or balconies regardless their space. The space of kitchens with over 4 sq. m floor space is shown separately.

**The useful floor space** of dwelling is a sum of the living-floor-space, the service floor space and the space of the kitchens.

**The average useful floor space** is a ratio between the useful floor space and the number of dwellings.



**Annex**

**Table 1**

**Newly build residential buildings and dwellings completed in the first quarter of 2018<sup>1</sup>**

Districts	Newly completed residential buildings and dwellings - in numbers		Useful floor area of newly built dwellings - sq. m			
	Buildings	Dwellings	Total	Living floor space	Service floor space	Area of kitchens
<b>Total</b>	<b>565</b>	<b>1530</b>	<b>147740</b>	<b>97265</b>	<b>39030</b>	<b>11445</b>
Blagoevgrad	-	-	-	-	-	-
Burgas	70	249	22691	14743	6271	1677
Varna	67	349	28848	18990	8503	1355
Veliko Tarnovo	31	75	5999	3804	1645	550
Vidin	1	1	119	80	31	8
Vratsa	4	9	711	528	102	81
Gabrovo	13	13	1799	1044	621	134
Dobrich	28	42	4435	2513	1066	856
Kardzhali	16	59	5200	3110	1385	705
Kyustendil	10	17	1645	1069	406	170
Lovech	7	7	657	417	168	72
Montana	5	5	720	356	253	111
Pazardzhik	37	95	8366	5304	2062	1000
Pernik	28	34	3368	2186	754	428
Pleven	7	17	1246	883	278	85
Plovdiv	89	290	32791	23122	8410	1259
Razgrad	6	8	923	506	304	113
Ruse	12	17	1635	955	514	166
Silistra	2	2	516	199	279	38
Sliven	16	23	2548	1620	720	208
Smolyan	2	4	503	306	143	54
Sofia	47	51	6725	4155	1808	762
Sofia (stolitsa)	18	73	7152	5420	1193	539
Stara Zagora	16	25	3048	1829	639	580
Targovishte	2	2	481	216	255	10
Haskovo	14	24	2326	1609	524	193
Shumen	5	5	402	236	91	75
Yambol	12	34	2886	2065	605	216

<sup>1</sup> Preliminary data.



**Table 2**

**Newly built residential buildings by type of building**

	(Number)								
	2016				2017				2018 <sup>1</sup>
	I quarter	II quarter	III quarter	IV quarter	I quarter	II quarter	III quarter	IV quarter	I quarter
<b>Total</b>	<b>541</b>	<b>519</b>	<b>476</b>	<b>625</b>	<b>462</b>	<b>584</b>	<b>505</b>	<b>654</b>	<b>565</b>
Houses	382	376	322	465	350	405	366	495	447
Blocks of flats	95	80	104	95	63	102	78	89	65
Mixed buildings	20	22	14	35	24	16	17	28	20
Hostels	1	2	-	2	-	-	-	-	-
Country houses	40	38	34	28	24	61	44	40	32
Buildings of institutional households	3	1	2	-	1	-	-	2	1

<sup>1</sup>Preliminary data.