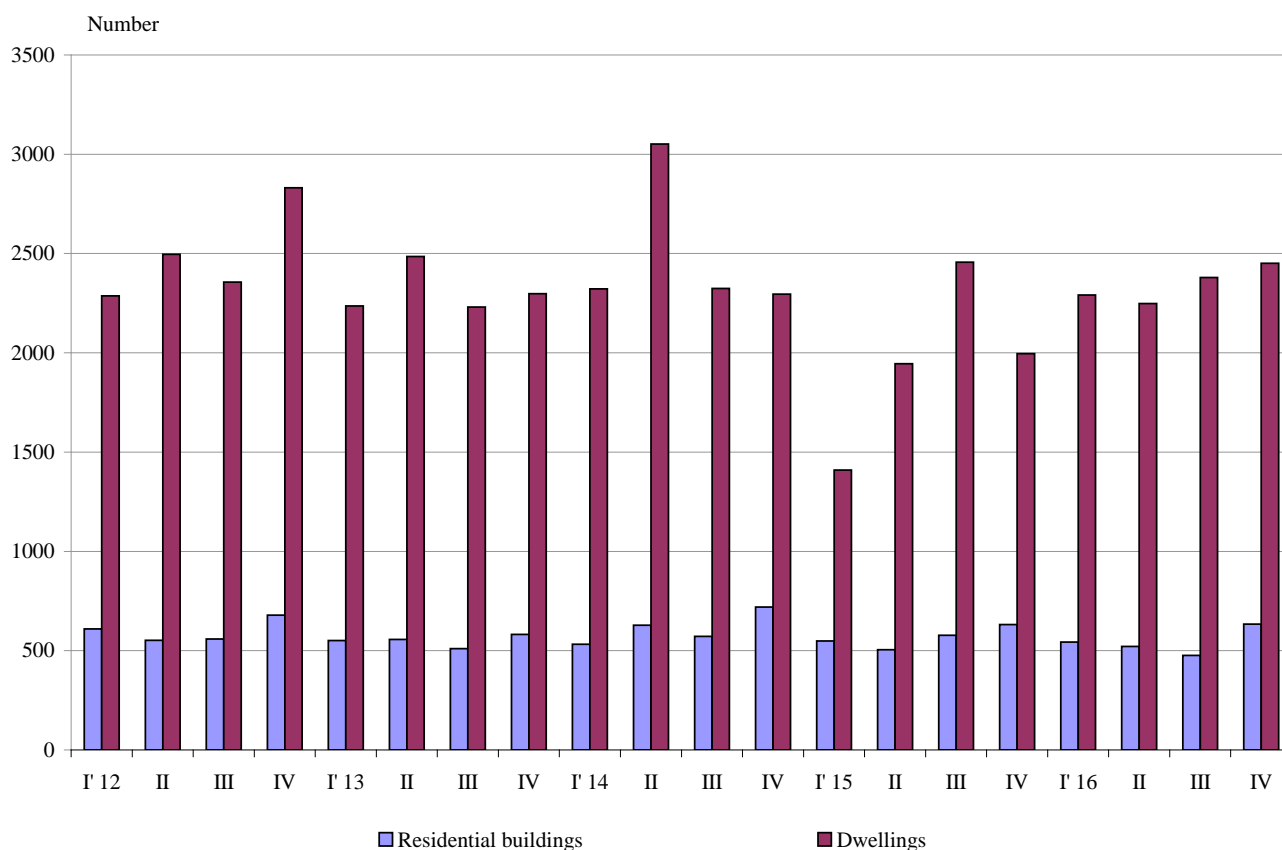




## NEWLY BUILT RESIDENTIAL BUILDINGS AND DWELLINGS COMPLETED IN THE FOURTH QUARTER OF 2016 (PRELIMINARY DATA)

According to preliminary data of the National Statistical Institute in the fourth quarter of 2016 the number of newly built residential buildings was 634 and the newly built dwellings in them were 2 451 (Annex, Table 1). Compared to the fourth quarter of 2015 the buildings were 2 more (or 0.3%), and the newly built dwellings in them increased by 455 or by 22.8% (Figure 1).

**Figure 1. Newly built residential buildings and dwellings completed by quarters**

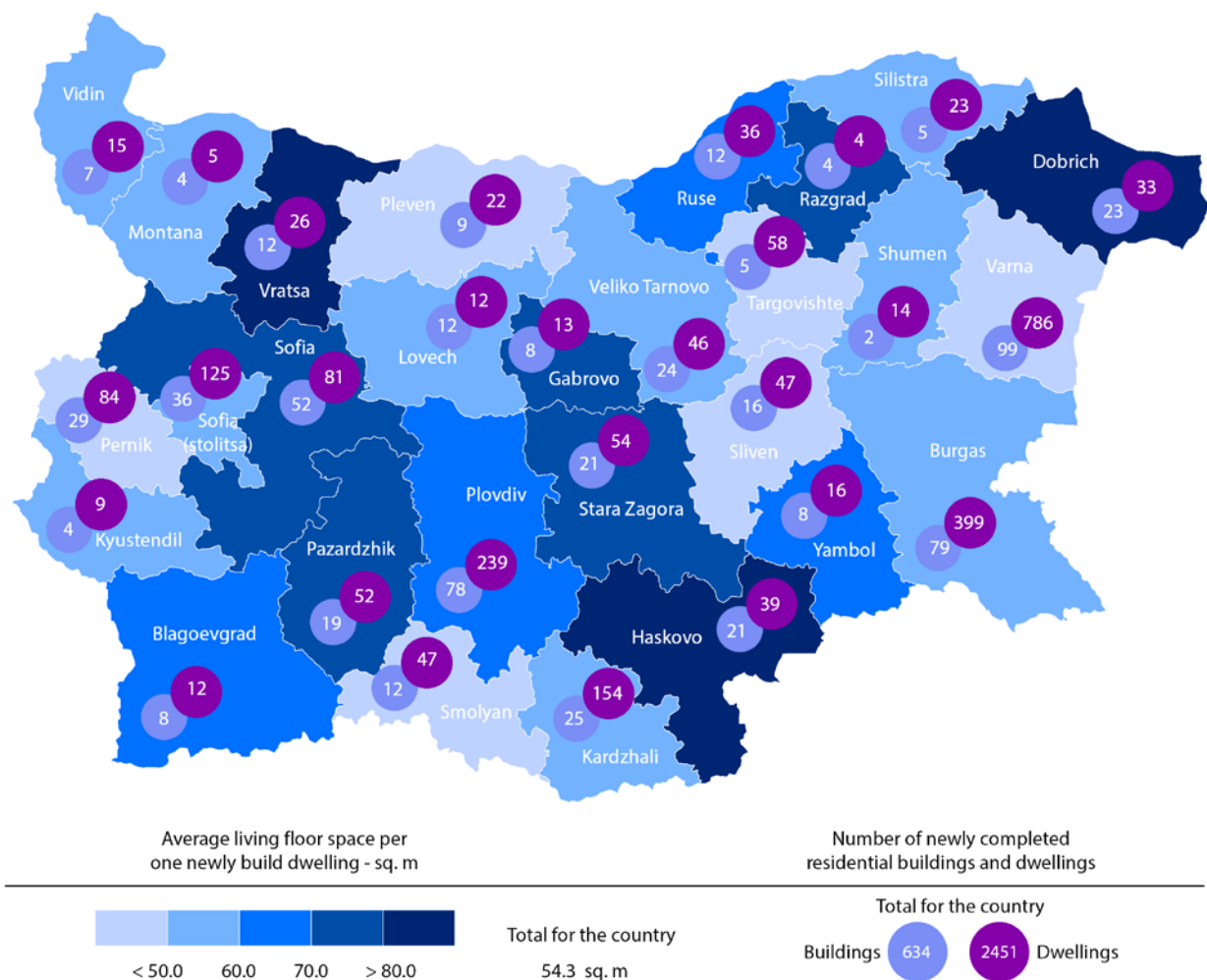


In the fourth quarter of 2016 73.2% of the newly built residential buildings were with steel-concrete construction, 22.9% with solid structure, 2.3% with 'other' and 1.6% with panel. Highest is the relative share of houses (74.5%) followed by blocks of flats (15.3%). As compared to the fourth quarter of 2015 a decrease of the number of country houses and buildings of institutional households only is observed (Annex, Table 2).



Highest is the number of residential buildings built in district Varna - 99 buildings with 786 dwellings in them, followed by Burgas - 79 residential buildings with 399 dwellings and Plovdiv - 78 residential buildings with 239 dwellings (Figure 2).

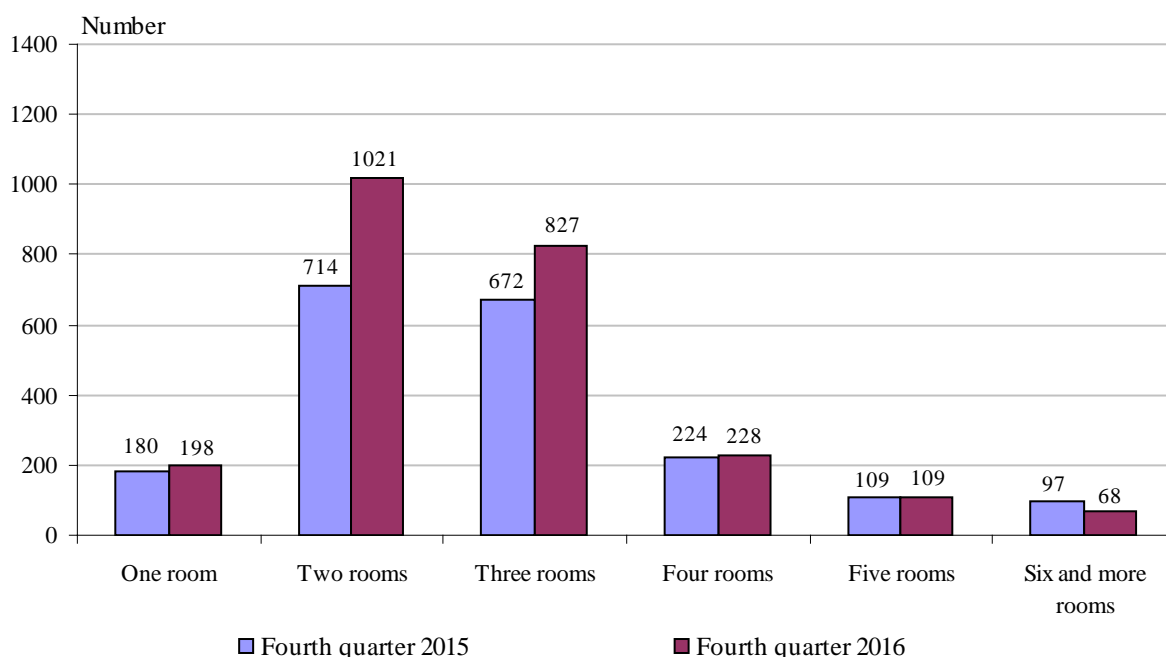
**Figure 2. Newly built residential buildings and dwellings completed in third quarter of 2016 by districts**



Highest is the number of newly built dwellings with two rooms (35.8%), followed by the number of those with three rooms (33.7%) and lowest is the number of dwellings with six and more rooms - 4.8% (Figure 3).



**Figure 3. Newly built dwellings completed by number of rooms**



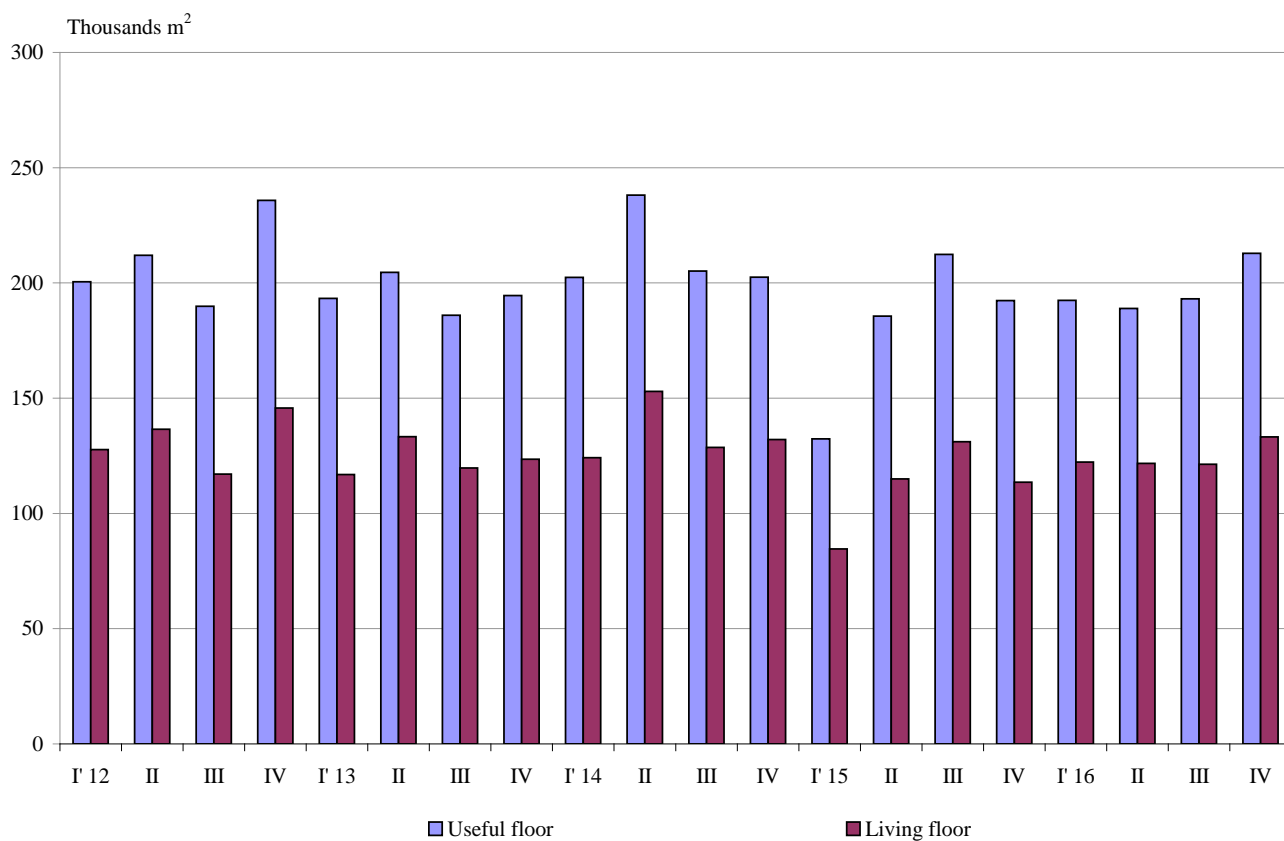
In the fourth quarter of 2016 **the total useful space** of newly built dwellings was 212.9 thousand sq. m or 10.7% more compared to the same quarter of 2015, as **the living floor** space increased (by 17.3%) and reached 133.2 thousand sq. m (Figure 4).

**The average useful floor space** of a newly built dwelling decreased from 96.4 sq. m in the fourth quarter of 2015 to 86.9 sq. m in the same quarter of 2016.

The biggest average useful floor space of a newly built dwelling was recorded in districts Dobrich - 168.5 sq. m and Stara Zagora - 146.1 sq. m, and the smallest one in Varna - 65.0 sq. m and Pernik - 70.0 sq. meters.



**Figure 4. Total useful floor space and living floor space of newly built dwellings completed by quarters**





## Methodological notes

The statistical data about the newly built residential buildings and dwellings are prepared on the basis of quarterly reports of the municipal administrations.

In the scope of survey are newly built residential buildings with approved or valid usage license according to Regulation No. 2/31.07.2003 of the Ministry of Regional Development and Public Works.

**Living floor space** is the floor space of living-rooms, bedrooms, recesses for sleeping, dining-rooms, living-rooms, cabinets and libraries of scientists and drawing-rooms but does not include the space of kitchens.

**Service floor space** is the floor space of rooms and kitchens with less than 4 square meters' floor space, vestibules with a portal or other screen, corridors, bathrooms, toilets, larders, hanging closets, other service rooms such as drying-rooms, laundries or balconies regardless their space. The space of kitchens with over 4 sq. m floor space is shown separately.

**The useful floor space** of dwelling is a sum of the living-floor-space, the service floor space and the space of the kitchens.

**The average useful floor space** is a ratio between the useful floor space and the number of dwellings.



## Annex

**Table 1**

### Newly build residential buildings and dwellings completed in the fourth quarter of 2016<sup>1</sup>

Districts	Newly completed residential buildings and dwellings - in numbers		Useful floor area of newly built dwellings - sq. m			
	Buildings	Dwellings	Total	Living floor space	Service floor space	Area of kitchens
<b>Total</b>	<b>634</b>	<b>2451</b>	<b>212895</b>	<b>133208</b>	<b>60858</b>	<b>18829</b>
Blagoevgrad	8	12	1137	776	204	157
Burgas	79	399	34167	20599	10880	2688
Varna	99	786	51124	33675	14213	3236
Veliko Tarnovo	24	46	4187	2575	1071	541
Vidin	7	15	1713	897	709	107
Vratsa	12	26	3444	2454	787	203
Gabrovo	8	13	1739	972	646	121
Dobrich	23	33	5562	3190	1784	588
Kardzhali	25	154	14008	8407	3721	1880
Kyustendil	4	9	809	459	279	71
Lovech	12	12	980	618	224	138
Montana	4	5	457	293	123	41
Pazardzhik	19	52	6586	3767	2013	806
Pernik	29	84	5879	3909	1210	760
Pleven	9	22	1708	1061	475	172
Plovdiv	78	239	24642	16703	5897	2042
Razgrad	4	4	472	309	127	36
Ruse	12	36	4537	2356	1844	337
Silistra	5	23	1949	1330	506	113
Sliven	16	47	4095	2327	1444	324
Smolyan	12	47	3335	2081	825	429
Sofia	52	81	10785	5751	3857	1177
Sofia (stolitsa)	36	125	10467	7000	2049	1418
Stara Zagora	21	54	7889	3932	3181	776
Targovishte	5	58	4110	2779	1228	103
Haskovo	21	39	4174	3134	747	293
Shumen	2	14	1325	735	460	130
Yambol	8	16	1615	1119	354	142

<sup>1</sup> Preliminary data.



**Table 2**

**Newly built residential buildings by type of building**

(Number)

	2014				2015				2016 <sup>1</sup>			
	I quarter	II quarter	III quarter	IV quarter	I quarter	II quarter	III quarter	IV quarter	I quarter	II quarter	III quarter	IV quarter
<b>Total</b>	<b>532</b>	<b>628</b>	<b>572</b>	<b>720</b>	<b>549</b>	<b>505</b>	<b>577</b>	<b>632</b>	<b>543</b>	521	<b>476</b>	<b>634</b>
Houses	366	417	412	518	415	334	400	462	384	378	322	472
Blocks of flats	75	123	97	89	70	76	82	86	94	80	104	97
Mixed buildings	26	40	24	38	23	24	26	33	20	22	14	35
Hostels	8	-	1	2	1	1	13	1	1	2	-	2
Country houses	47	45	36	72	39	70	50	49	41	38	34	28
Buildings of institutional households	10	3	2	1	1	-	6	1	3	1	2	-

<sup>1</sup> Preliminary data.