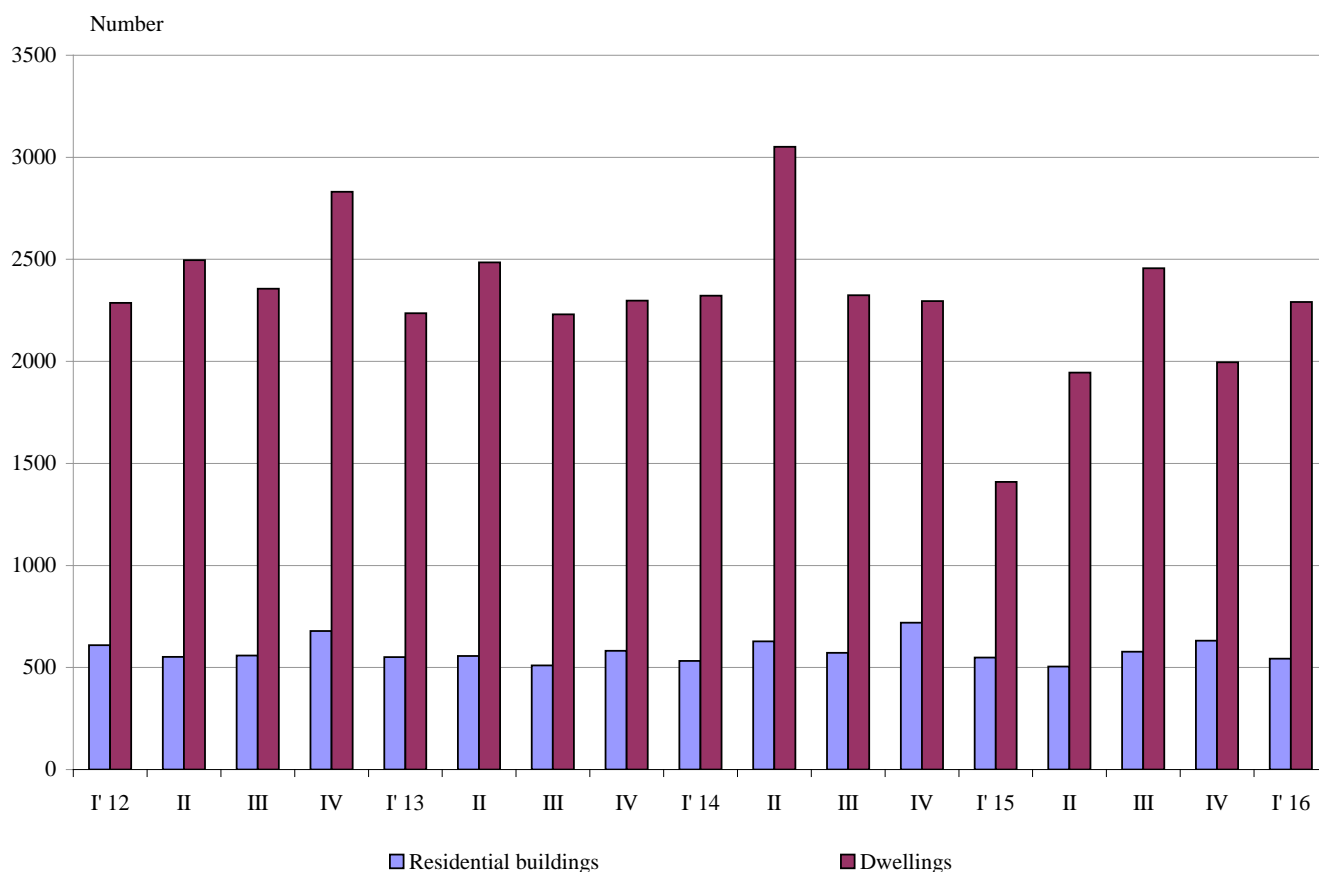




## NEWLY BUILT RESIDENTIAL BUILDINGS AND DWELLINGS COMPLETED IN THE FIRST QUARTER OF 2016 (PRELIMINARY DATA)

According to preliminary data of the National Statistical Institute in the first quarter of 2016 the number of newly built residential buildings was 543 and the newly built dwellings in them were 2 291 (Annex, Table 1). Compared to the first quarter of 2015 the buildings were 6 less (or 1.1%), while the newly built dwellings in them increased by 882 or by 62.6% (Figure 1).

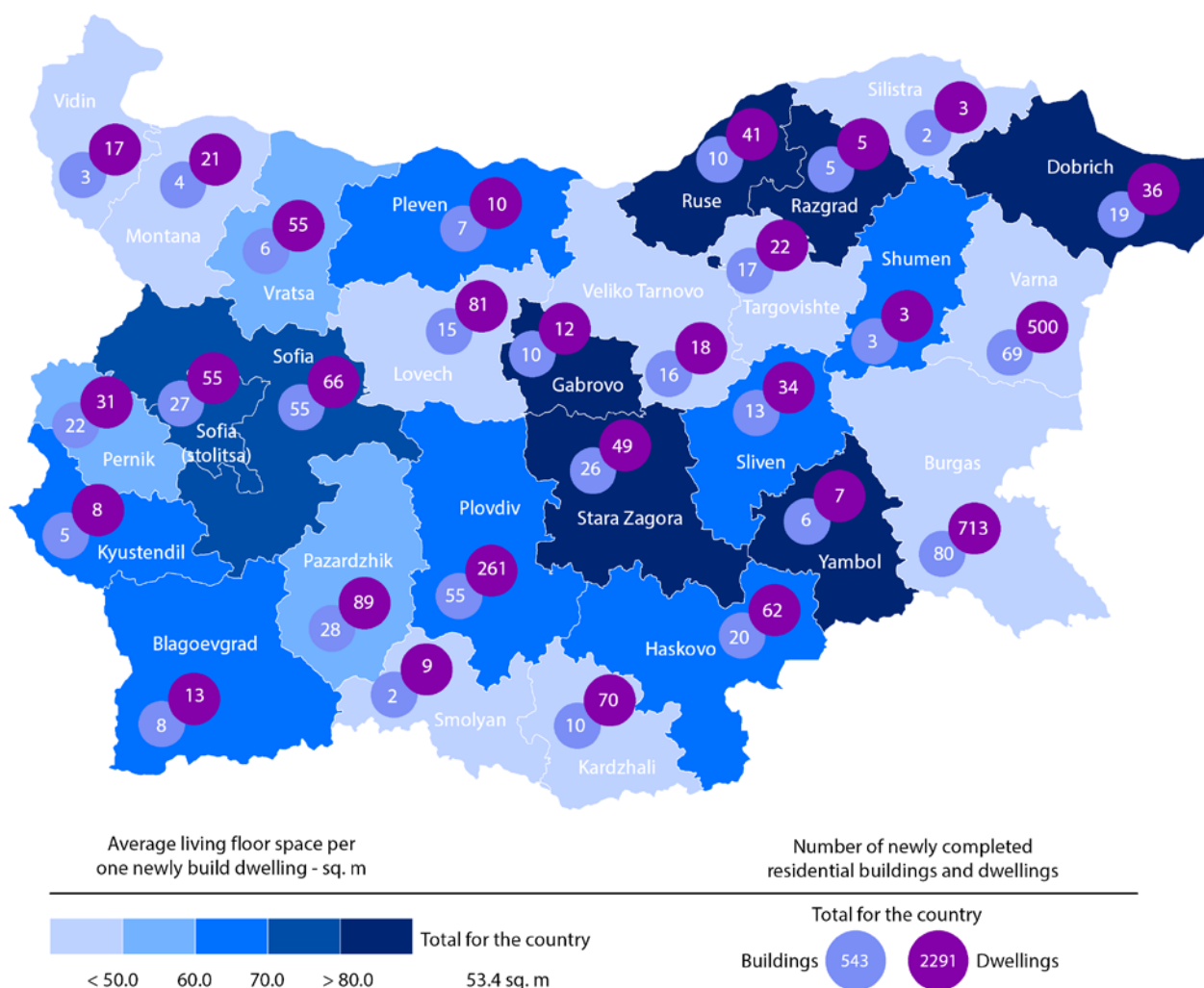
**Figure 1. Newly built residential buildings and dwellings completed by quarters**



In the first quarter of 2016 75.9% of the newly built residential buildings were with steel-concrete construction, 20.8% with solid structure, 1.8% with 'other' and 1.5% with panel. Highest is the relative share of houses (70.7%) followed by blocks of flats (17.3%). As compared to the first quarter of 2015 an increase of the number of newly built blocks of flats is observed (Annex, Table 2).

Highest is the number of residential buildings built in district Burgas - 80 buildings with 713 dwellings in them, followed by Varna - 69 residential buildings with 500 dwellings and Plovdiv - 55 residential buildings with 261 dwellings (Figure 2).

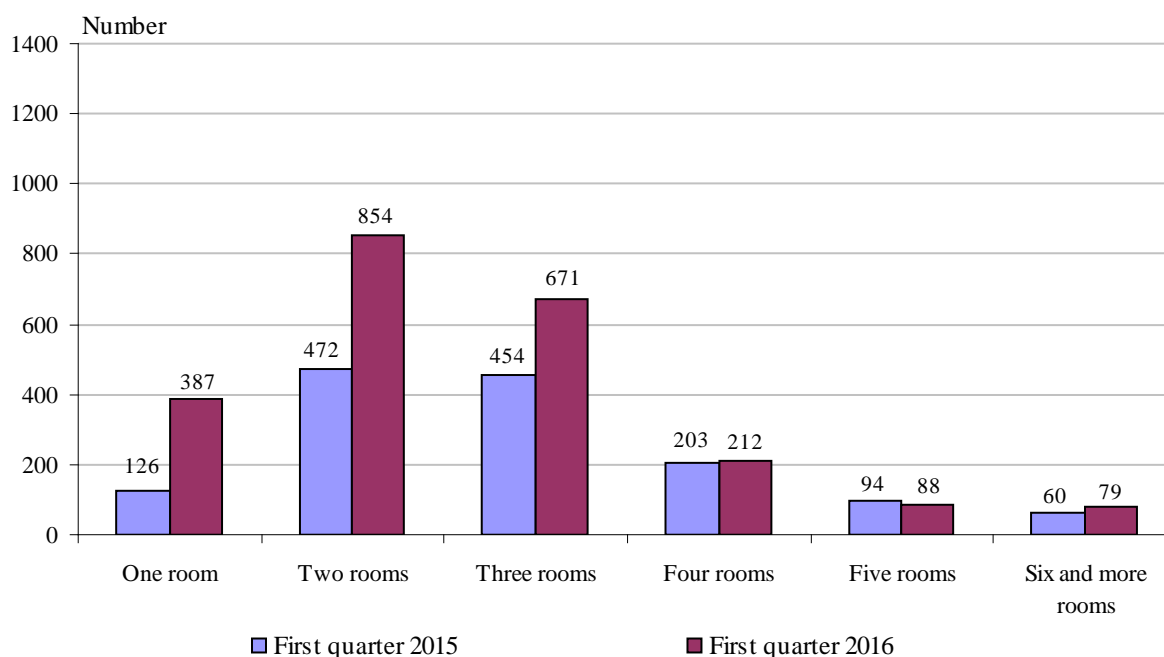
**Figure 2. Newly built residential buildings and dwellings completed in first quarter of 2016 by districts**



Highest is the number of newly built dwellings with two rooms (37.3%), followed by the number of those with three rooms (29.3%) and lowest is the number of dwellings with six and more rooms - 3.4% (Figure 3).



**Figure 3. Newly built dwellings completed by number of rooms**



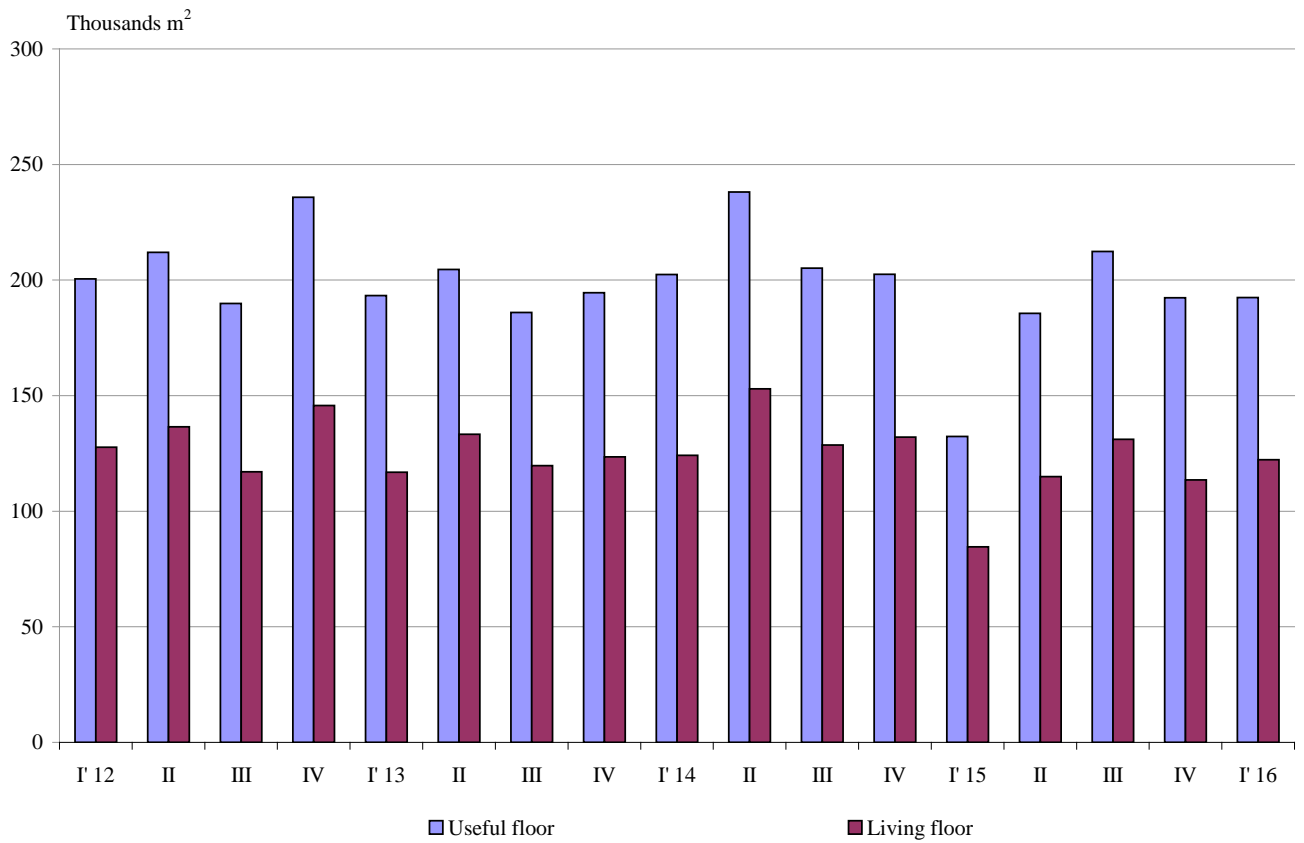
In the first quarter of 2016 **the total useful space** of newly built dwellings was 192.4 thousand sq. m or 45.4% more compared to the same quarter of 2015, **the living floor** space increased (by 44.6%) and reached 122.3 thousand sq. m (Figure 4).

**The average useful floor space** of a newly built dwelling decreased from 93.9 sq. m in the first quarter of 2015 to 84.0 sq. m in the same quarter of 2016.

The biggest average useful floor space of a newly built dwelling was recorded in districts Ruse - 177.1 sq. m and Gabrovo - 157.2 sq. m, and the smallest one in Montana - 52.2 sq. m and Lovech - 59.9 sq. m.



**Figure 4. Total useful floor space and living floor space of newly built dwellings completed by quarters**





## Methodological notes

The statistical data about the newly built residential buildings and dwellings are prepared on the basis of quarterly reports of the municipal administrations.

In the scope of survey are newly built residential buildings with approved or valid usage license according to Regulation № 2/31.07.2003 of the Ministry of Regional Development and Public Works.

**Living floor space** is the floor space of living-rooms, bedrooms, recesses for sleeping, dining-rooms, living-rooms, cabinets and libraries of scientists and drawing-rooms but does not include the space of kitchens.

**Service floor space** is the floor space of rooms and kitchens with less than 4 square meters floor space, vestibules with a portal or other screen, corridors, bathrooms, toilets, larders, hanging closets, other service rooms such as drying-rooms, laundries or balconies regardless their space. The space of kitchens with over 4 sq. m. floor space is shown separately.

**The useful floor space** of dwelling is a sum of the living-floor-space, the service floor space and the space of the kitchens.

**The average useful floor space** is a ratio between the useful floor space and the number of dwellings.



## Annex

**Table 1**

### Newly build residential buildings and dwellings completed in the first quarter of 2016<sup>1</sup>

Districts	Newly completed residential buildings and dwellings - in numbers		Useful floor area of newly built dwellings - sq. m			
	Buildings	Dwellings	Total	Living floor space	Service floor space	Area of kitchens
<b>Total</b>	<b>543</b>	<b>2291</b>	<b>192404</b>	<b>122278</b>	<b>52534</b>	<b>17592</b>
Blagoevgrad	8	13	1265	832	282	151
Burgas	80	713	46675	29749	11547	5379
Varna	69	500	35063	23556	10142	1365
Veliko Tarnovo	16	18	1733	899	656	178
Vidin	3	17	1534	802	532	200
Vratsa	6	55	3700	2768	787	145
Gabrovo	10	12	1886	1113	595	178
Dobrich	19	36	4959	3206	1147	606
Kardzhali	10	70	7153	3299	3012	842
Kyustendil	5	8	910	512	341	57
Lovech	15	81	4850	2777	1604	469
Montana	4	21	1097	518	404	175
Pazardzhik	28	89	9259	5089	3003	1167
Pernik	22	31	2561	1613	632	316
Pleven	7	10	1368	648	493	227
Plovdiv	55	261	27339	17251	7388	2700
Razgrad	5	5	754	442	242	70
Ruse	10	41	7263	4946	1696	621
Silistra	2	3	279	139	83	57
Sliven	13	34	3427	2098	1028	301
Smolyan	2	9	586	225	279	82
Sofia	55	66	7985	5007	2071	907
Sofia (stolitsa)	27	55	6673	4261	1946	466
Stara Zagora	26	49	4963	4468	308	187
Targovishte	17	22	1905	896	932	77
Haskovo	20	62	5816	4198	1028	590
Shumen	3	3	355	184	146	25
Yambol	6	7	1046	782	210	54

<sup>1</sup> Preliminary data.



**Table 2**

**Newly built residential buildings by type of building**

	2014				2015				(Number)
	I quarter	II quarter	III quarter	IV quarter	I quarter	II quarter	III quarter	IV quarter	2016 <sup>1</sup>
<b>Total</b>	<b>532</b>	<b>628</b>	<b>572</b>	<b>720</b>	<b>549</b>	<b>505</b>	<b>577</b>	<b>632</b>	<b>543</b>
Houses	366	417	412	518	415	334	400	462	384
Blocks of flats	75	123	97	89	70	76	82	86	94
Mixed buildings	26	40	24	38	23	24	26	33	20
Hostels	8	-	1	2	1	1	13	1	1
Country houses	47	45	36	72	39	70	50	49	41
Buildings of institutional households	10	3	2	1	1	-	6	1	3

<sup>1</sup> Preliminary data.