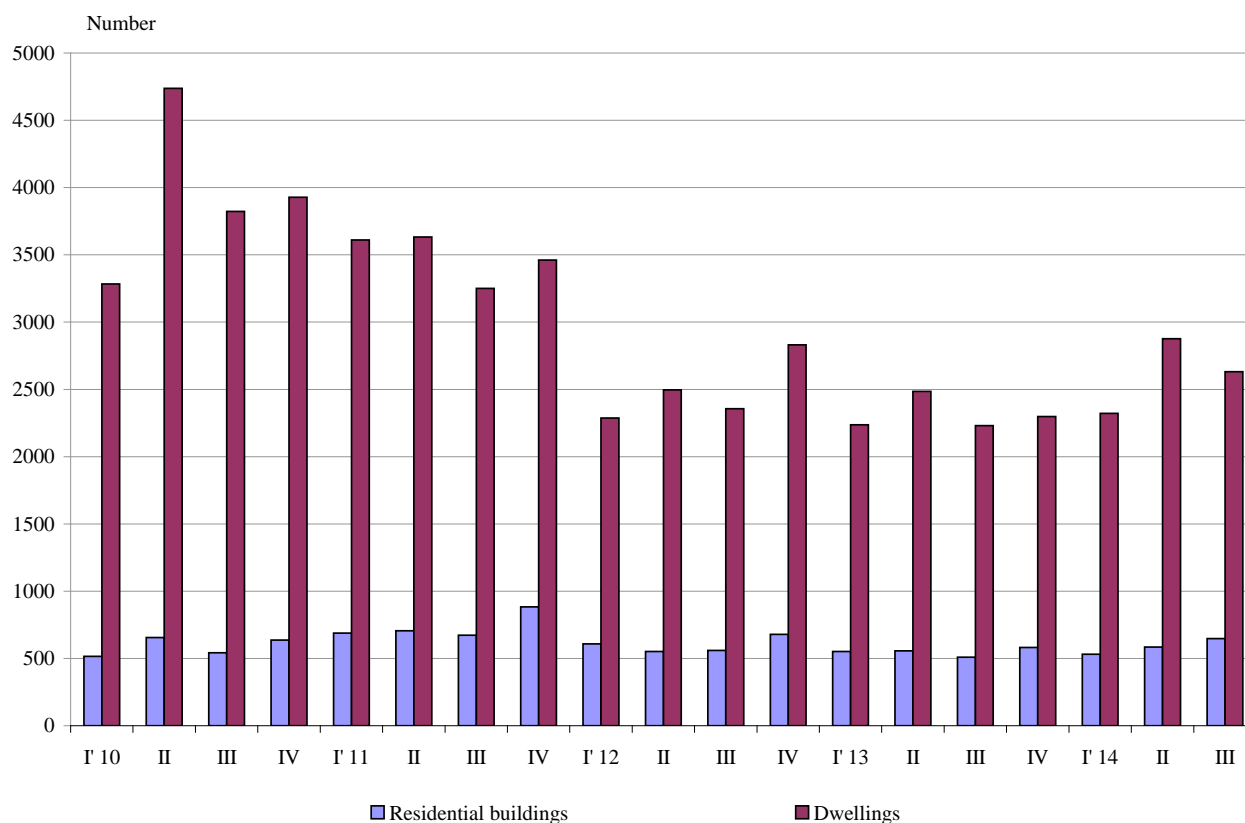




NEWLY BUILT RESIDENTIAL BUILDINGS AND DWELLINGS COMPLETED IN THE THIRD QUARTER OF 2014 (PRELIMINARY DATA)

According to the preliminary data of the National Statistical Institute in the third quarter of 2014 the number of newly built residential buildings was 647 (Annex, Table 1). Compared to the third quarter of 2013 they were by 137 more (or by 26.9%) and the registered increase of the newly built dwellings in them was 17.9% (Figure 1).

Figure 1. Newly built residential buildings and dwellings completed by quarters



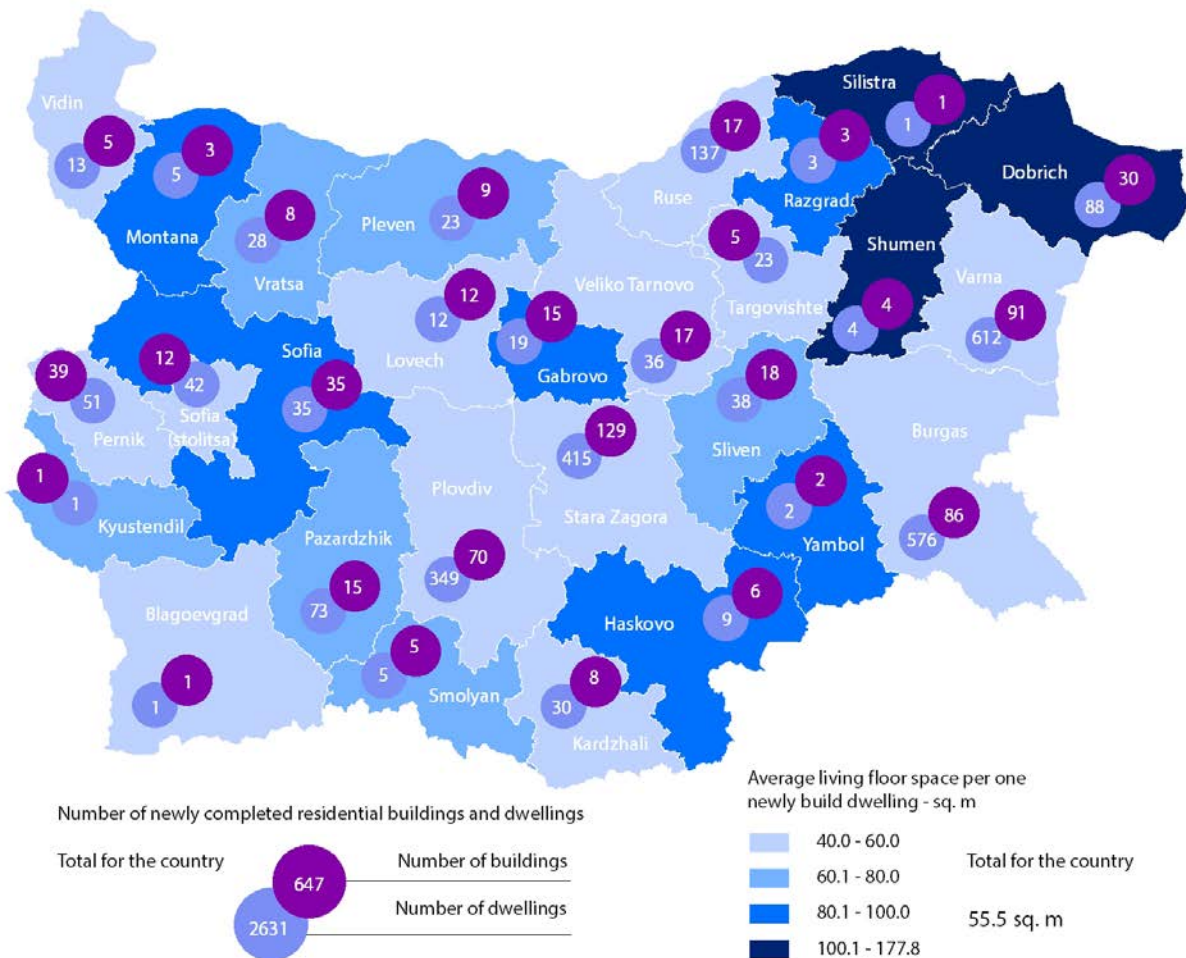
In the third quarter of 2014 77.0% of newly built residential buildings were with steel-concrete construction, 20.1% with solid structure, 2.6% with 'other' structures and 0.3% with panel. In comparison with the same quarter of 2013 a decrease of share with panel structure of buildings was observed only.

According to newly built residential buildings distribution by type, with the highest relative share were houses (71.4%), followed by blocks of flats (17.3%). As compared with the third quarter of 2013 the number of houses, blocks of flats, mixed buildings, and buildings of institutional households rose while the number of newly built country houses and hostels dropped (Annex, Table 2).



The highest number of residential buildings was built in the district Stara Zagora - 129 buildings with 415 dwellings in them, in the district Varna - 91 residential buildings with 612 dwellings and in the district Burgas - 86 residential buildings with 576 dwellings (Figure 2).

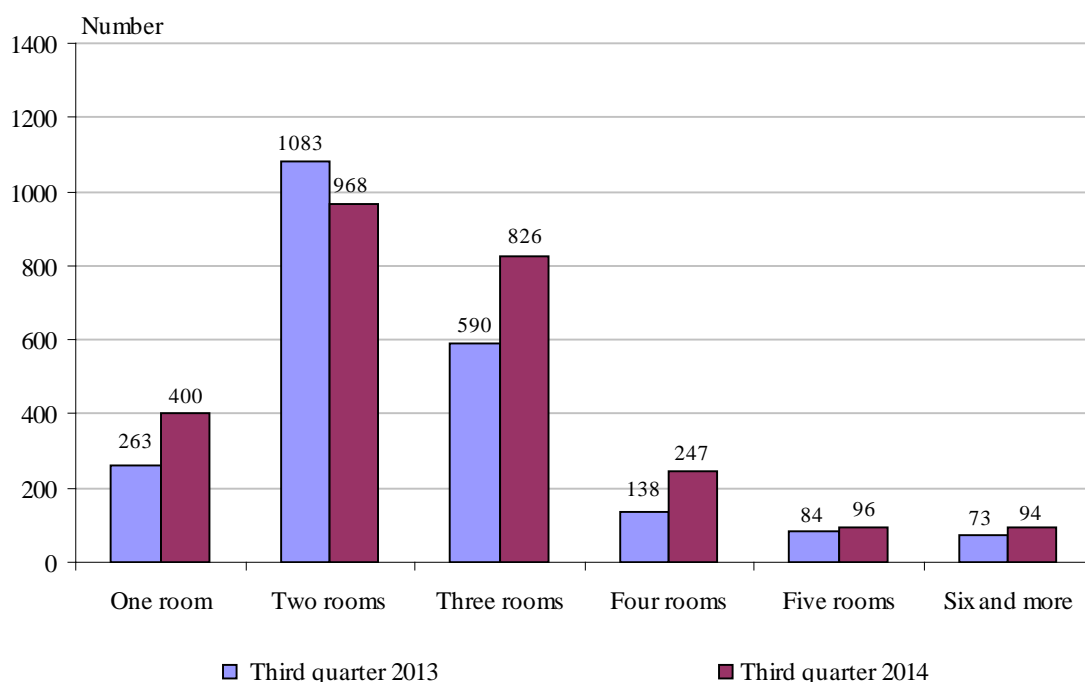
Figure 2. Newly built residential buildings and dwellings completed in the third quarter of 2014 by districts





The largest number of newly built dwellings was with two rooms (36.8%), followed by those with three rooms (31.4%). Compared to the third quarter of 2013 a decrease of dwellings with two rooms only (by 115) was registered. The structure of the housing fund with prevailing share of dwelling with two and three rooms remained unchanged (Figure 3).

Figure 3. Newly built dwellings completed by number of rooms



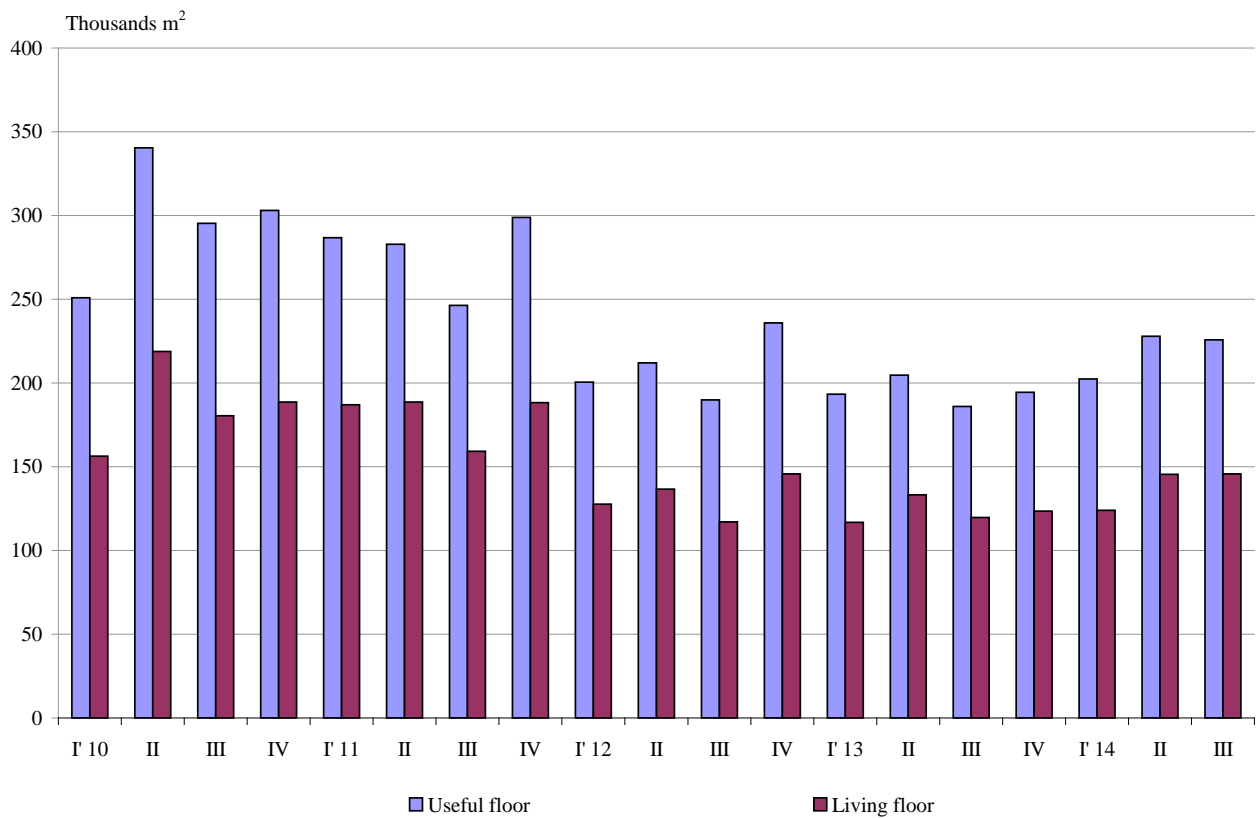
In the third quarter of 2014 **the total useful space** of the newly built dwellings was 225.7 thousand sq. m or by 21.4% more than in the same quarter of 2013. **The living floor** space also increased (by 21.7%) and reached 145.7 thousand sq. m (Figure 4).

The average useful floor space of the newly built dwelling decreased from 83.4 sq. m in the third quarter of 2013 to 85.8 sq. m in the same quarter of 2014.

The biggest average useful floor space of a newly built dwelling was recorded in the district Shumen - 209.5 sq. m and Silistra - 186.0 sq. m, and the smallest one in the district Blagoevgrad - 53.0 sq. m and district Stara Zagora - 71.2 sq. m.



Figure 4. Total useful floor space and living floor space of the newly built dwellings completed by quarters





Methodological notes

The statistical data about the newly built residential buildings and dwellings was developed on the basis of the quarterly reports obtained from the municipal administrations.

In the scope of the survey were the newly built residential buildings with approved record of handover of Form 16 or a valid usage license according to Regulation № 2/31.07.2003 of the Ministry of Regional Development and Public Works.

Living floor space is the floor space of living-rooms, bedrooms, recesses for sleeping, dining-rooms, the rooms for day-stay, cabinets and libraries of scientists and drawing-rooms but does not include the space of the kitchens.

Service floor space is the floor space of the rooms and kitchens with less than 4 square meters floor space, vestibules with a portal or an other screen, corridors, bathrooms, toilets, larders, hanging closets, other service rooms such as drying-rooms, laundries or balconies not depending on their space. The space of kitchens with over 4 sq. m. floor space is shown separately.

The useful floor space of the dwelling is a sum of the living-floor-space, service floor space and the space of the kitchens.



Annex

Table 1

Newly built residential buildings and dwellings completed in the third quarter of 2014¹

Districts	Newly completed residential buildings and dwellings - in numbers		Useful floor area of newly built dwellings - sq. m			
	Buildings	Dwellings	Total	Living floor space	Service floor space	Area of kitchens
Total	647	2631	225731	145701	63712	16318
Blagoevgrad	1	1	53	40	7	6
Burgas	86	576	41042	26603	11370	3069
Varna	91	612	48634	26694	18897	3043
Veliko Tarnovo	17	36	3246	1901	1039	306
Vidin	5	13	1400	752	551	97
Vratsa	8	28	2830	1810	959	61
Gabrovo	15	19	2969	1681	983	305
Dobrich	30	88	16070	11916	3032	1122
Kardzhali	8	30	4319	1519	2424	376
Kyustendil	1	1	105	61	44	0
Lovech	12	12	1128	666	311	151
Montana	3	5	634	437	142	55
Pazardzhik	15	73	7502	4715	1755	1032
Pernik	39	51	4457	2626	1147	684
Pleven	9	23	2181	1426	555	200
Plovdiv	70	349	30399	20415	7612	2372
Razgrad	3	3	427	287	93	47
Ruse	17	137	10498	7139	2641	718
Silistra	1	1	186	120	41	25
Sliven	18	38	4359	2316	1628	415
Smolyan	5	5	501	366	80	55
Sofia	35	35	5434	3457	1360	617
Sofia (stolitsa)	12	42	3226	2254	596	376
Stara Zagora	129	415	29552	23704	4970	878
Targovishte	5	23	2061	1062	839	160
Haskovo	6	9	1453	858	494	101
Shumen	4	4	838	711	102	25
Yambol	2	2	227	165	40	22

¹ Preliminary data.



Table 2

Newly built residential buildings by type of building

(Number)

	2012				2013				2014 ¹		
	I quarter	II quarter	III quarter	IV quarter	I quarter	II quarter	III quarter	IV quarter	I quarter	II quarter	III quarter
Total	609	552	559	679	551	556	510	582	532	585	647
Houses	446	359	381	455	388	391	342	392	367	389	462
Blocks of flats	83	93	100	126	97	99	92	88	75	112	112
Mixed buildings	28	35	28	43	26	29	21	30	25	39	27
Hostels	1	-	-	2	1	2	2	5	8		1
Country houses	51	64	48	52	39	35	53	62	47	42	43
Buildings of institutional households	-	1	2	1	-	-	-	5	10	3	2

¹ Preliminary data.