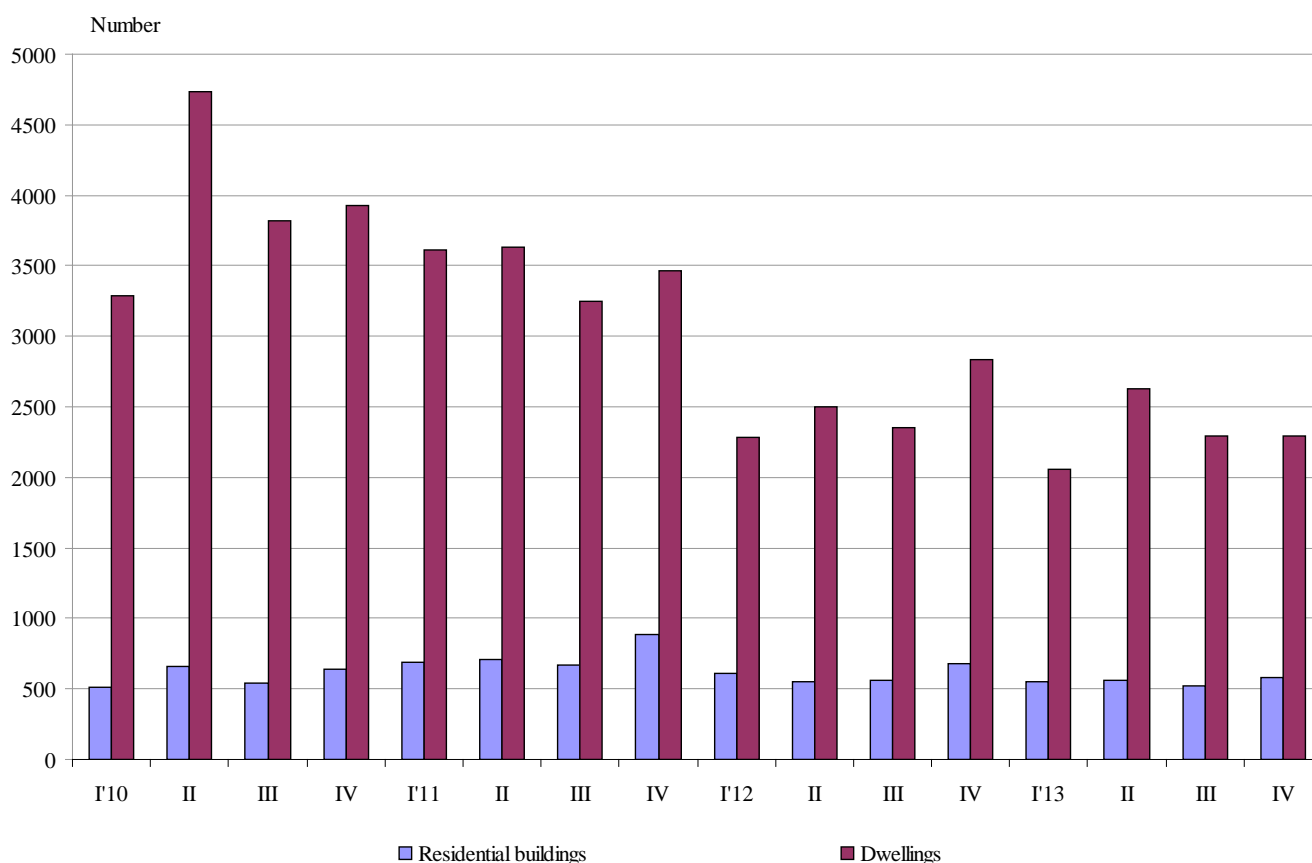




NEWLY BUILT RESIDENTIAL BUILDINGS AND DWELLINGS COMPLETED IN THE FOURTH QUARTER OF 2013 (PRELIMINARY DATA)

According to the preliminary data of the National Statistical Institute in the fourth quarter of 2013 the number of newly built residential buildings was 576 (Annex, Table 1). Compared to the fourth quarter of 2012 they were by 103 less (or by 15.2%) and the registered decrease of the newly built dwellings in them was 18.9% (Figure 1).

Figure 1. Newly built residential buildings and dwellings completed by quarters



In the fourth quarter of 2013 71.0% of newly built residential buildings were with steel-concrete construction, 26.0% with solid structure, 2.6% with “other” structures and 0.4% with panel. In comparison with the same quarter of 2012 a decrease of share with all type of buildings was observed.

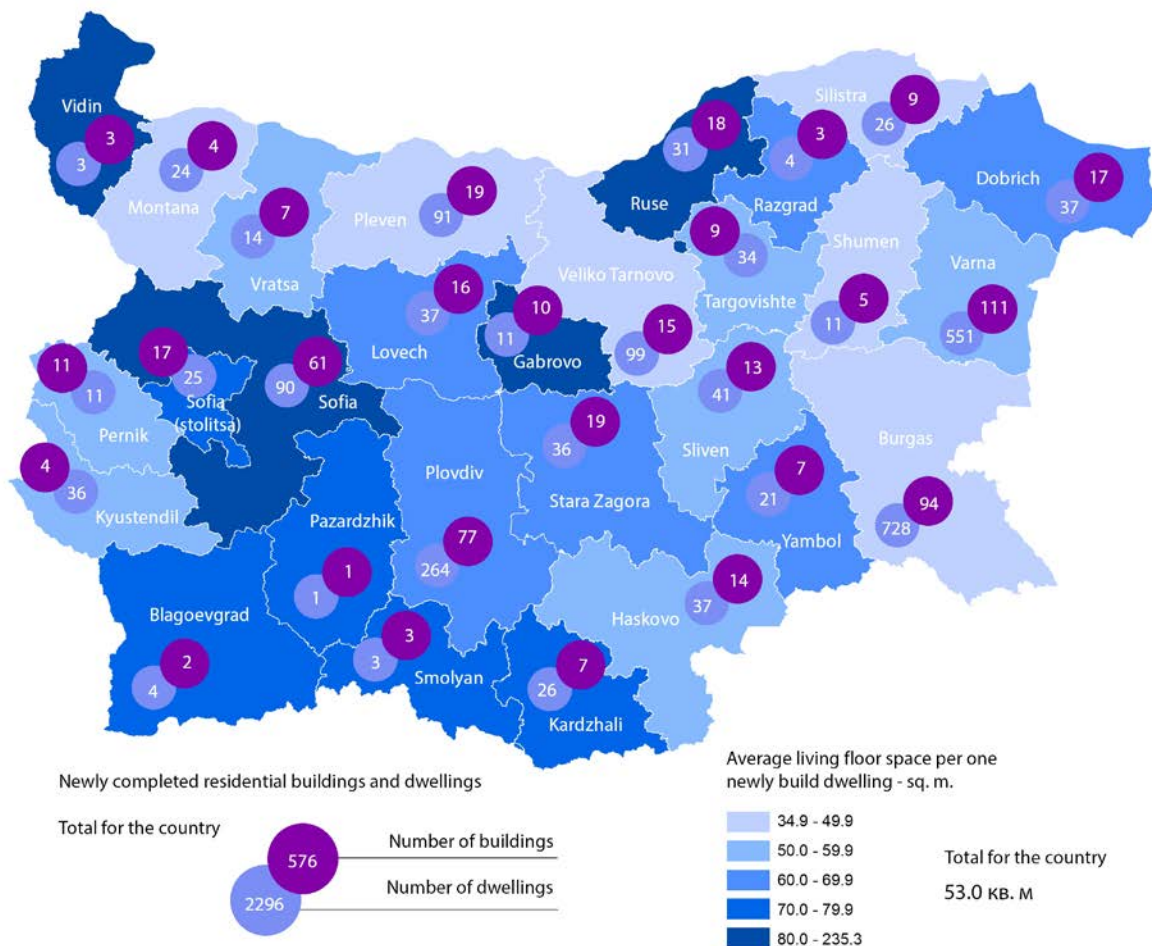
According to newly built residential buildings distribution by type, with the highest relative share were houses (67.3%), followed by blocks of flats (15.3%), as compared with the fourth quarter of



2012 their number has dropped by 67 and 38 respectively, while the newly built country houses have risen by 9 (Annex, Table 2).

The highest number of residential buildings has been built in the district Varna - 111 buildings with 551 dwellings in them, district Burgas - 94 residential buildings with 728 dwellings and district Plovdiv - 77 residential buildings with 264 dwellings (Figure 2).

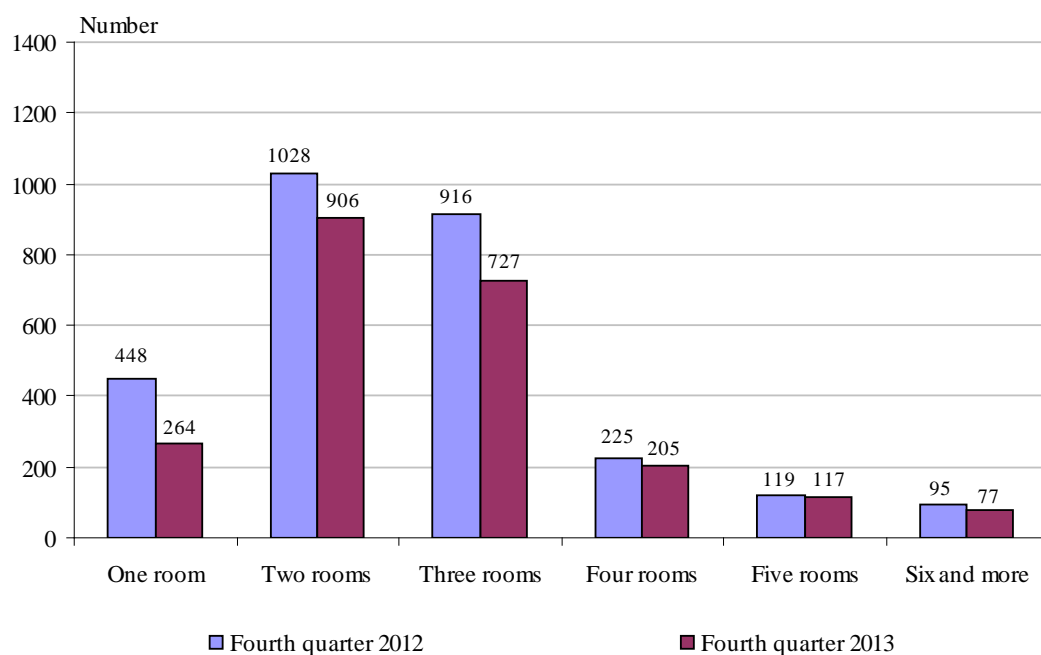
Figure 2. Newly built residential buildings and dwellings completed in the fourth quarter of 2013 by districts





The largest number of newly built dwellings were with two rooms (39.5%), followed by those with three rooms (31.7%). Compared to the fourth quarter of 2012 a decrease of all types of dwellings was registered. The structure of the housing fund with prevailing share of dwelling with two and three rooms remained unchanged (Figure 3).

Figure 3. Newly built dwellings completed by number of rooms



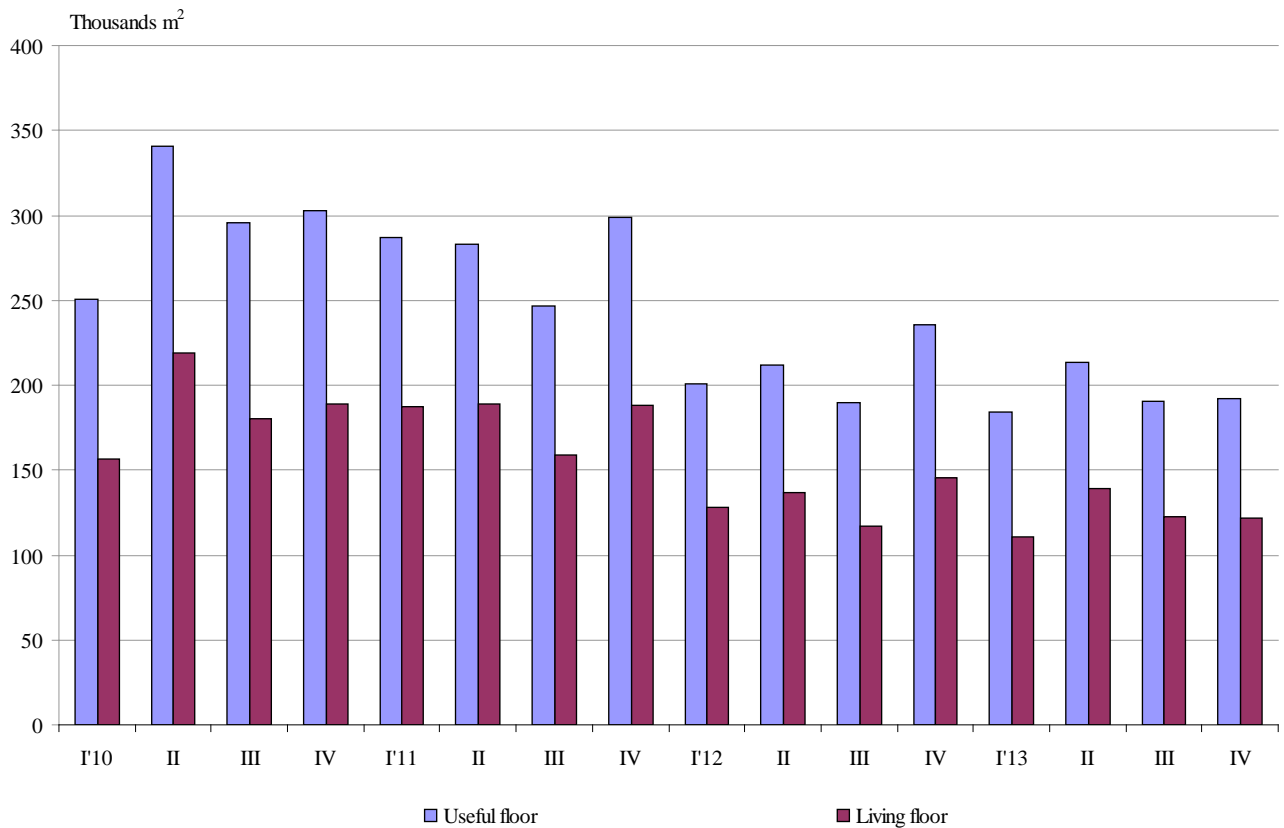
In the fourth quarter of 2013 **the total useful space** of the newly built dwellings was 192.3 thousand sq. m or by 18.5% less than in the same quarter of 2012. **The living floor** space also has been decreased by 16.4% and has reached 121.8 thousand sq. m (Figure 4).

At the same time **the average useful floor space** of the newly built dwelling has increased from 83.3 sq. m in the fourth quarter of 2012 to 83.8 sq. m in the same quarter of 2013.

The biggest average useful floor space of a newly built dwelling was recorded in the district Vidin - 338.3 sq. m and Gabrovo - 149.5 sq. m, and the smallest one in the district Pleven - 63.6 sq. m and district Shumen - 69.7 sq. m.



Figure 4. Total useful floor space and living floor space of the newly built dwellings completed by quarters





Methodological notes

The statistical data about the newly built residential buildings and dwellings was developed on the basis of the quarterly reports obtained from the municipal administrations.

In the scope of the survey were the newly built residential buildings with approved record of handover of Form 16 or a valid usage license according to Regulation № 2/31.07.2003 of the Ministry of Regional Development and Public Works.

Living floor space is the floor space of living-rooms, bedrooms, recesses for sleeping, dining-rooms, the rooms for day-stay, cabinets and libraries of scientists and drawing-rooms but does not include the space of the kitchens.

Service floor space is the floor space of the rooms and kitchens with less than 4 square meters floor space, vestibules with a portal or an other screen, corridors, bathrooms, toilets, larders, hanging closets, other service rooms such as drying-rooms, laundries or balconies not depending on their space. The space of kitchens with over 4 sq. m. floor space is shown separately.

The useful floor space of the dwelling is sum of the living-floor-space, service floor space and the space of the kitchens.

Annex

Table 1

Newly build residential buildings and dwellings completed in the fourth quarter of 2013¹

Districts	Newly completed residential buildings and dwellings – in numbers		Useful floor area of newly built dwellings - sq. m			
	Buildings	Dwellings	Total	Living floor space	Service floor space	Area of kitchens
Total	576	2296	192303	121767	54379	16157
Blagoevgrad	2	4	340	300	18	22
Burgas	94	728	50839	32534	13276	5029
Varna	111	551	46748	28918	15591	2239
Veliko Tarnovo	15	99	6988	4263	2075	650
Vidin	3	3	1015	706	282	27
Vratsa	7	14	1171	813	311	47
Gabrovo	10	11	1645	896	615	134
Dobrich	17	37	3817	2503	975	339
Kardzhali	7	26	2748	2003	508	237
Kyustendil	4	36	2994	1861	950	183
Lovech	16	37	4001	2297	1236	468
Montana	4	24	1943	1122	405	416
Pazardzhik	1	1	93	71	6	16
Pernik	11	11	945	648	213	84
Pleven	19	91	5787	3513	1571	703
Plovdiv	77	264	23717	16040	5415	2262
Razgrad	3	4	506	262	173	71
Ruse	18	31	4124	2791	1043	290
Silistra	9	26	2375	908	1360	107
Sliven	13	41	3343	2131	1012	200
Smolyan	3	3	273	210	31	32
Sofia	61	90	11247	6920	3172	1155
Sofia (stolitsa)	17	25	3229	2216	734	279
Stara Zagora	19	36	3484	2232	844	408
Targovishte	9	34	3077	1811	998	268
Haskovo	14	37	3009	1870	914	225
Shumen	5	11	767	494	203	70
Yambol	7	21	2078	1434	448	196

¹ Preliminary data.



Table 2

Newly built residential buildings by type of building

(Number)

	2011				2012				2013 ¹			
	I quarter	II quarter	III quarter	IV quarter	I quarter	II quarter	III quarter	IV quarter	I quarter	II quarter	III quarter	IV quarter
Total	688	706	672	883	609	552	559	679	549	561	521	576
Houses	491	475	454	598	446	359	381	455	394	391	347	388
Bloks of flats	133	139	106	131	83	93	100	126	89	106	94	88
Mixed buildings	13	19	36	47	28	35	28	43	25	27	25	29
Hostels	2	2	1	4	1	-	-	2	1	2	2	5
Country houses	46	70	74	101	51	64	48	52	40	35	53	61
Buildings of institutional households	3	1	1	2	-	1	2	1	-	-	-	5

¹ Preliminary data.