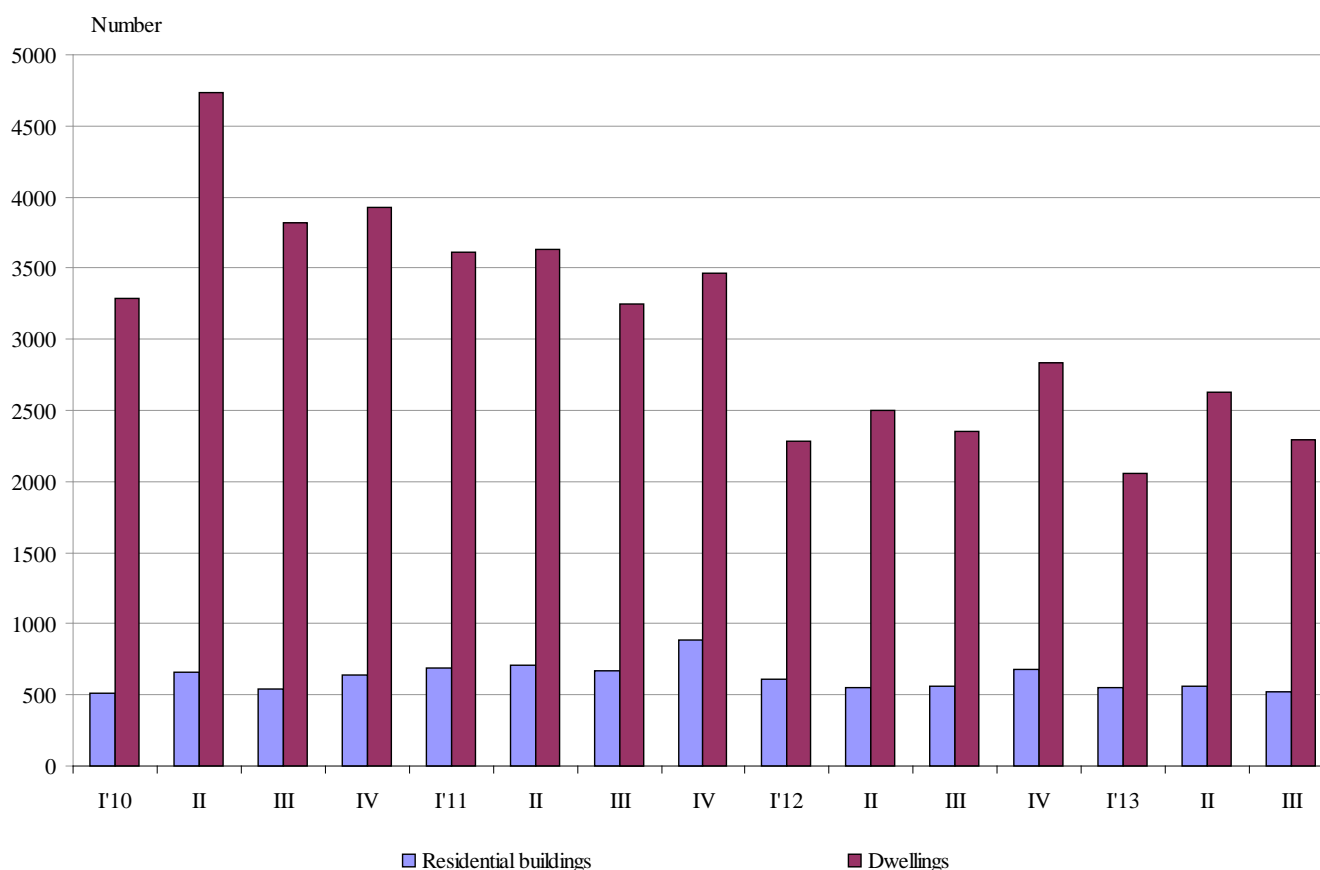




NEWLY BUILT RESIDENTIAL BUILDINGS AND DWELLINGS COMPLETED IN THE THIRD QUARTER OF 2013 (PRELIMINARY DATA)

According to the preliminary data of the National Statistical Institute in the third quarter of 2013 the number of newly built residential buildings was 521 (Annex, Table 1). Compared to the third quarter of 2012 they were by 38 less (or by 6.8%) and the registered decrease of the newly built dwellings in them was by 2.6% (Figure 1).

Figure 1. Newly built residential buildings and dwellings completed by quarters



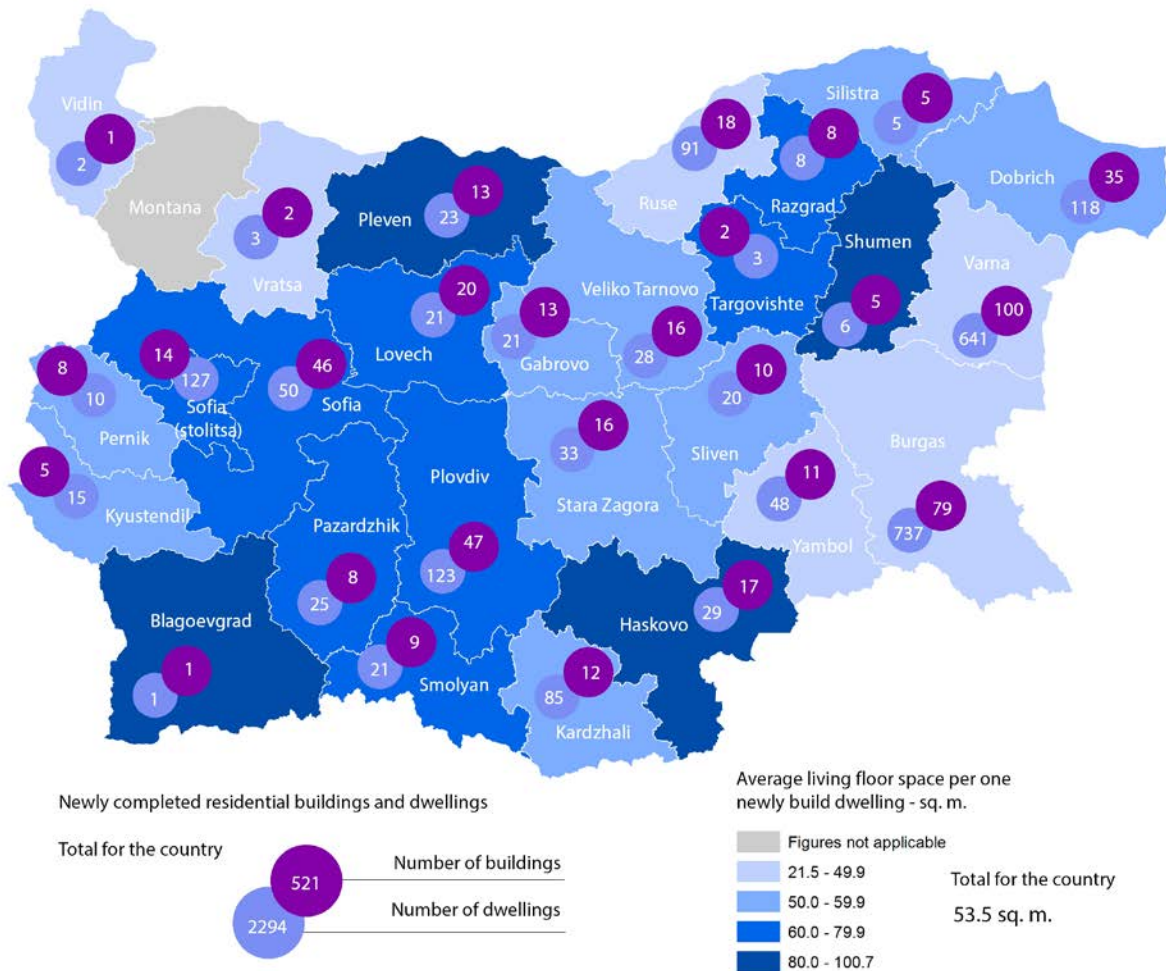
In the third quarter of 2013 74.5% from newly built residential buildings were with steel-concrete construction, 24.5% with solid structure, 0.6% with panel and 0.4% with „other”. In comparison with the same quarter of 2012 an increase of buildings share with solid structure only was observed.



According to newly built residential buildings distribution by type with the highest relative share were houses (66.6%), followed by block of flats (18.0%), as compared with the third quarter of 2012 their number dropped by 34 and 6 respectively, while the newly built country houses rose by 5 (Annex, Table 2).

The highest number of the residential buildings has been built in the district Varna - 100 buildings with 641 dwellings in them, district Burgas - 79 residential buildings with 737 dwellings and district Plovdiv - 47 residential buildings with 123 dwellings (Figure 2).

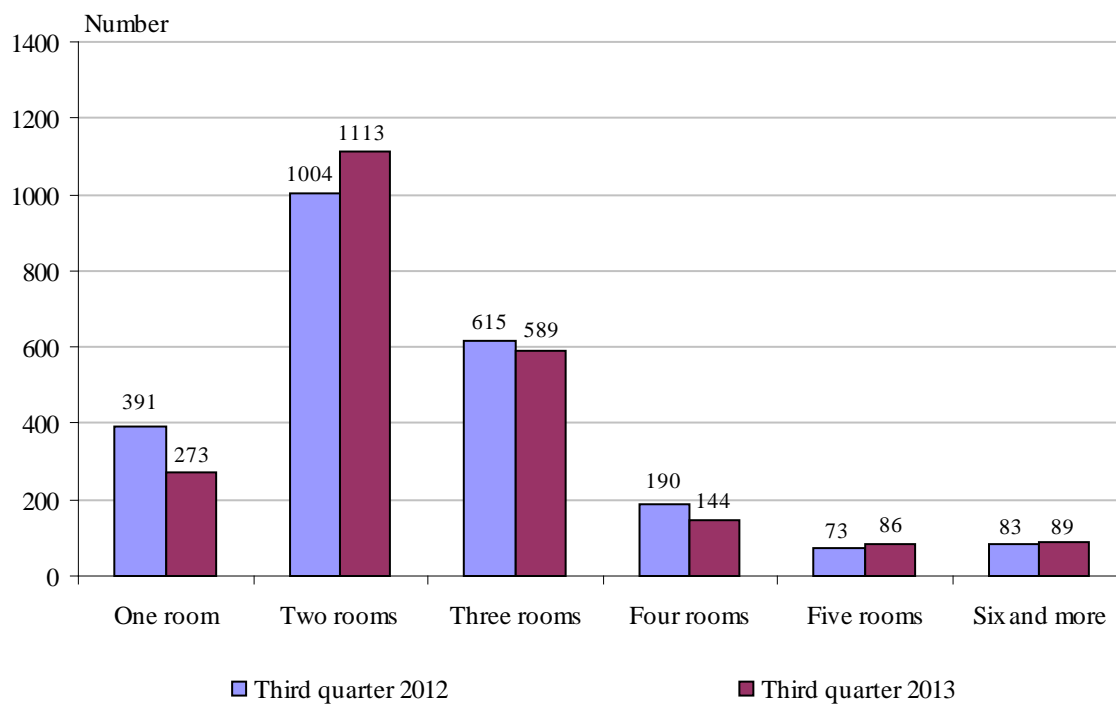
Figure 2. Newly built residential buildings and dwellings completed in the third quarter of 2013 by districts





Around half of newly built dwellings were with two rooms (48.5%), followed by those with three rooms (25.7%). Compared to the third quarter of 2012 an increase of dwellings with two, five, and six and more rooms and decrease of those with one, three and four rooms was registered. The structure of the housing fund with prevailing share of dwelling with two and three rooms remained unchanged (Figure 3).

Figure 3. Newly built dwellings completed by number of rooms



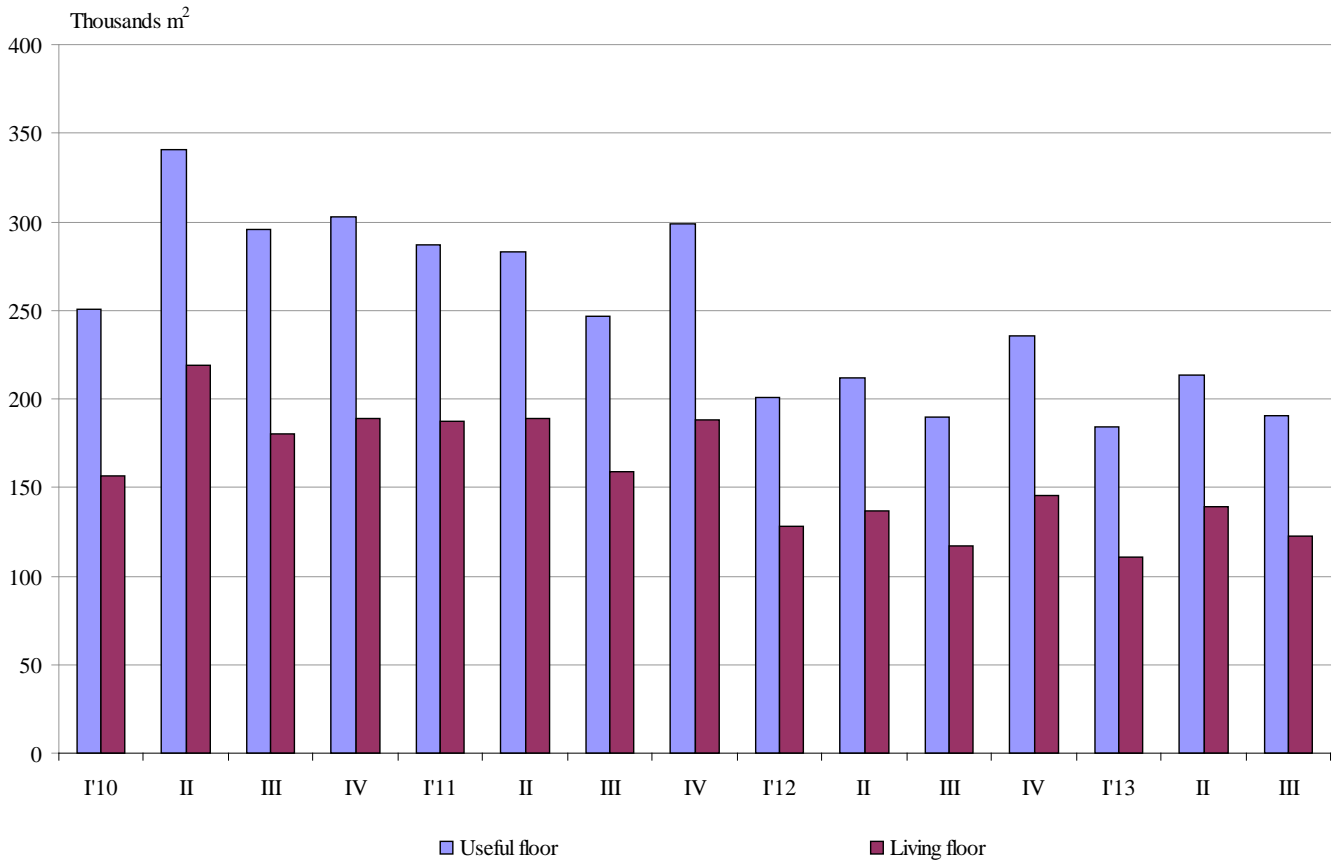
In the third quarter of 2013 **the total useful space** of the newly built dwellings was 190.8 thousand sq. m or by 0.5% more than in the same quarter of 2012. **The living floor** space also increased by 4.8% and reached 122.7 thousand sq. m (Figure 4).

The average useful floor space of the newly built dwelling increased from 80.6 sq. m in the third quarter of 2012 to 83.2 sq. m in the same quarter of 2013.

The biggest average useful floor space of a newly built dwelling was recorded in the district Shumen - 193.8 sq. m and Haskovo - 150.7 sq. m, and the smallest one in the district Vidin - 27.5 sq. m and district Vratsa - 39.0 sq. m.



Figure 4. Total useful floor space and living floor space of the newly built dwellings completed by quarters





Methodological notes

The statistical data about the newly built residential buildings and dwellings was developed on the basis of the quarterly reports obtained from the municipal administrations.

In the scope of the survey were the newly built residential buildings with approved record of handover Form 16 or a valid usage license according to Regulation № 2/31.07.2003 of the Ministry of Regional Development and Public Works.

Living floor space is the floor space of living-rooms, bedrooms, recesses for sleeping, dining-rooms, the rooms for day-stay, cabinets and libraries of scientists and drawing-rooms but does not include the space of the kitchens.

Service floor space is the floor space of the rooms and kitchens with less than 4 square meters floor space, vestibules with a portal or an other screen, corridors, bathrooms, toilets, larders, hanging closets, other service rooms such as drying-rooms, laundries or balconies not depending on their space. The space of kitchens with over 4 sq. m. floor space is shown separately.

The useful floor space of the dwelling is sum of the living-floor-space, service floor space and the space of the kitchens.

Table 1

Newly build residential buildings and dwellings completed in the third quarter of 2013¹

Districts	Newly completed residential buildings and dwellings - number		Useful floor area of newly built dwellings - sq. m			
	Buildings	Dwellings	Total	Living floor space	Service floor space	Area of kitchens
Total	521	2294	190838	122714	51527	16597
Blagoevgrad	1	1	106	80	20	6
Burgas	79	737	52644	35109	12648	4887
Varna	100	641	48923	30904	15122	2897
Veliko Tarnovo	16	28	2508	1501	816	191
Vidin	1	2	55	43	7	5
Vratsa	2	3	117	77	27	13
Gabrovo	13	21	2156	1219	728	209
Dobrich	35	118	10492	6536	2803	1153
Kardzhali	12	85	6745	4300	1583	862
Kyustendil	5	15	1514	781	585	148
Lovech	20	21	2334	1308	757	269
Montana	-	-	-	-	-	-
Pazardzhik	8	25	2954	1792	815	347
Pernik	8	10	933	550	260	123
Pleven	13	23	3046	2198	588	260
Plovdiv	47	123	13126	9437	2480	1209
Razgrad	8	8	948	507	282	159
Ruse	18	91	6457	4474	1292	691
Silistra	5	5	707	280	380	47
Sliven	10	20	1867	1192	509	166
Smolyan	9	21	1831	1303	331	197
Sofia	46	50	6224	3986	1431	807
Sofia (stolitsa)	14	127	13639	7747	4907	985
Stara Zagora	16	33	2530	1807	437	286
Targovishte	2	3	437	235	183	19
Haskovo	17	29	4369	2626	1456	287
Shumen	5	6	1163	604	490	69
Yambol	11	48	3013	2118	590	305

¹ Preliminary data.



Table 2

Newly built residential buildings by type of building

(Number)

	2011				2012				2013 ¹		
	I quarter	II quarter	III quarter	IV quarter	I quarter	II quarter	III quarter	IV quarter	I quarter	II quarter	III quarter
Total	688	706	672	883	609	552	559	679	549	561	521
Houses	491	475	454	598	446	359	381	447	394	391	347
Bloks of flats	133	139	106	131	83	93	100	129	89	106	94
Mixed buildings	13	19	36	47	28	35	28	43	25	27	25
Hostels	2	2	1	4	1	-	-	2	1	2	2
Country houses	46	70	74	101	51	64	48	57	40	35	53
Buildings of institutional households	3	1	1	2	-	1	2	1	-	-	-

¹Preliminary data.