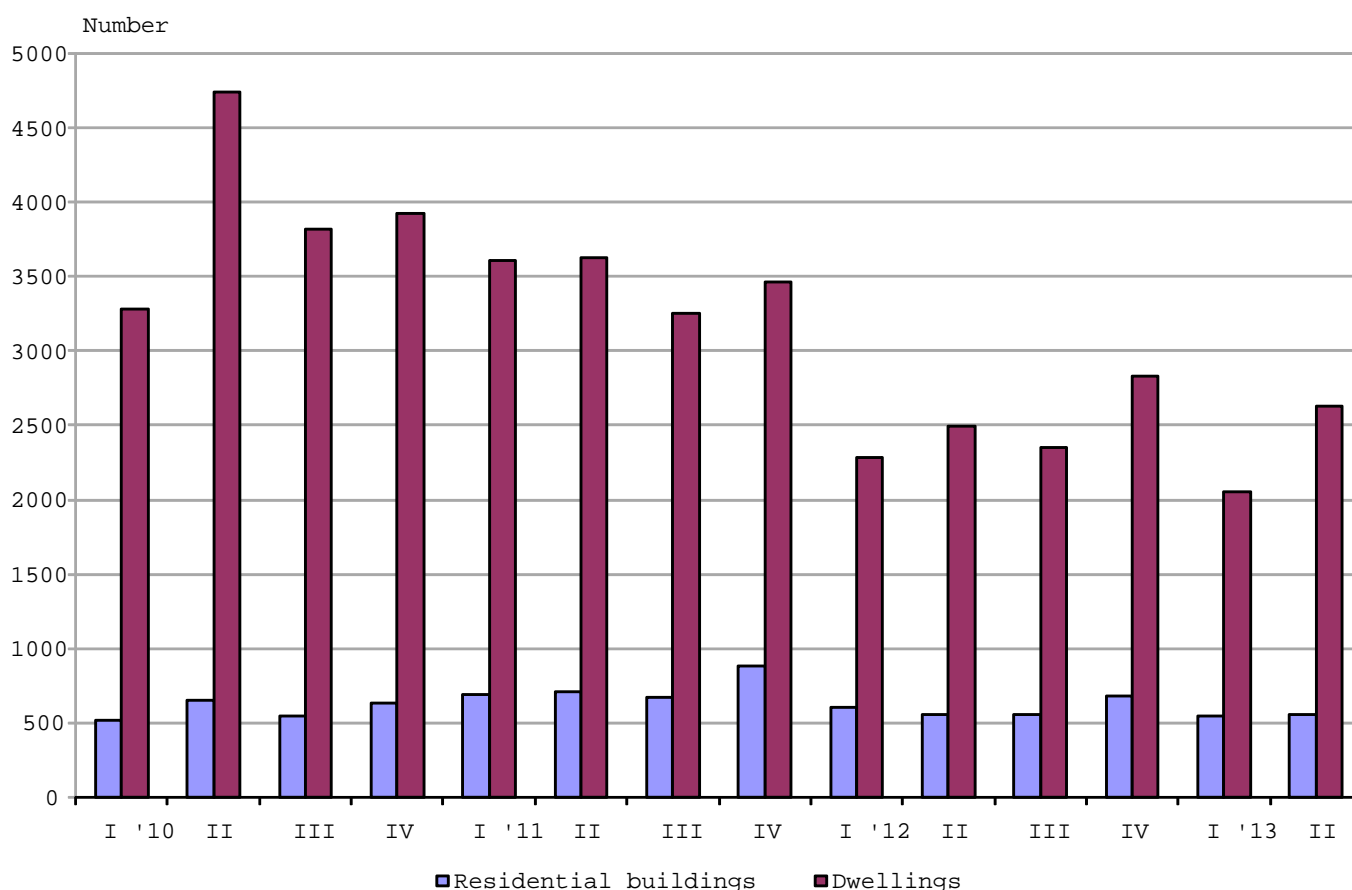




NEWLY BUILT RESIDENTIAL BUILDINGS AND DWELLINGS COMPLETED IN THE SECOND QUARTER OF 2013 (PRELIMINARY DATA)

According to the preliminary data of the National Statistical Institute in the second quarter of 2013 the number of newly built residential buildings was 561 (Annex, Table 1). Compared to the second quarter of 2012 they were by 9 more (or by 1.6%) and the registered increase of the newly built dwellings was by 5.4% or 134 (Figure 1).

Figure 1. Newly built residential buildings and dwellings completed by quarters



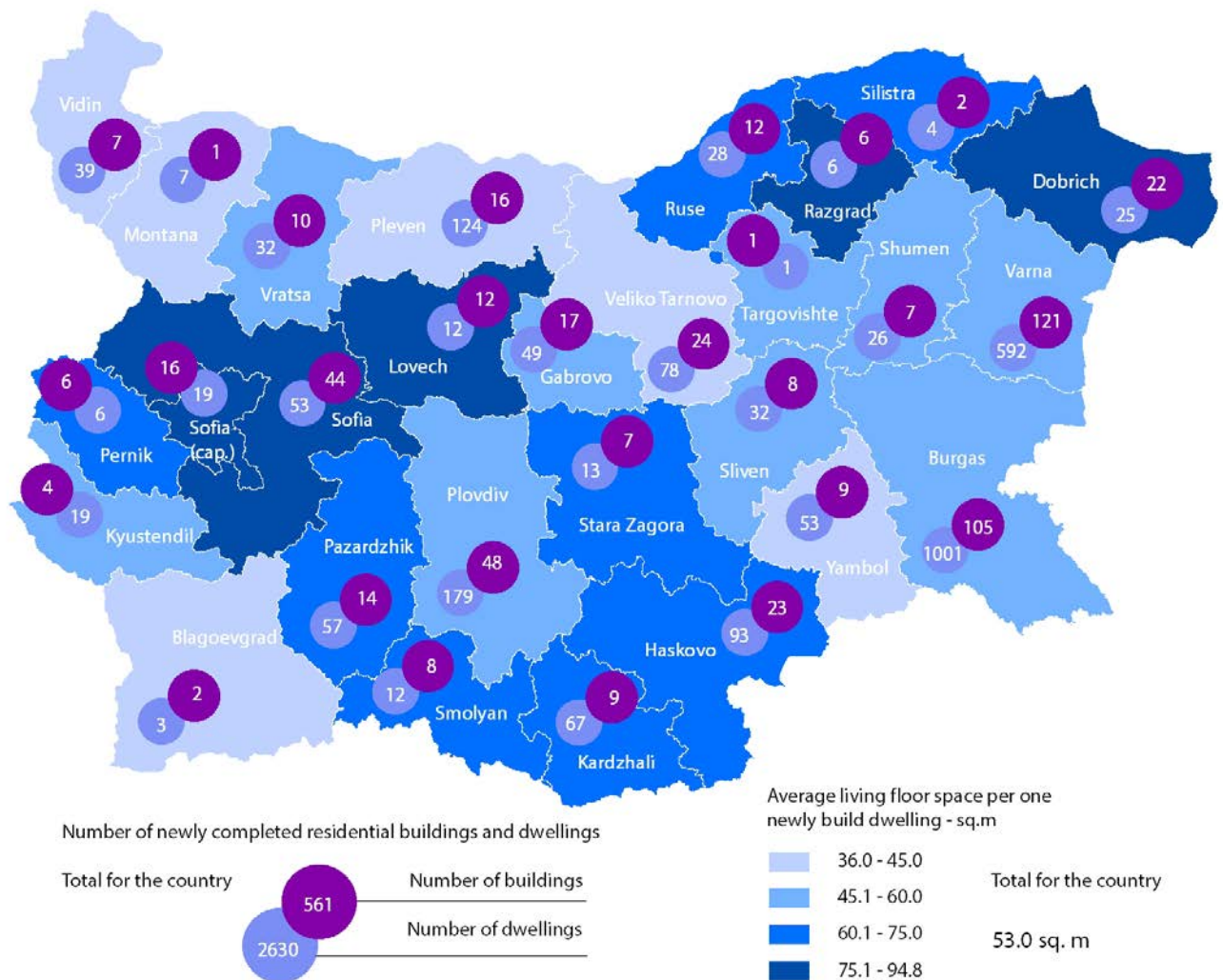
In the second quarter of 2013 from newly built residential buildings 72.5% were with steel-concrete construction, 25.8% with solid structure, 1.4% with „other” and 0.2% with panel. In comparison with the same quarter of 2012 an increase of buildings share with solid structure only was observed.



According to newly built residential buildings distribution by type with the highest relative share were houses (69.7%), followed by block of flats (18.9%), as compared with the second quarter of 2012 their number rose by 32 and 13 respectively, while the newly built country houses and mixed buildings dropped by 29 and 8 (Annex, Table 2).

The highest number of the residential buildings has been built in the district Varna - 121 buildings with 592 dwellings in them, district Burgas - 105 residential buildings with 1 001 dwellings and district Plovdiv - 48 residential buildings with 179 dwellings (Figure 2).

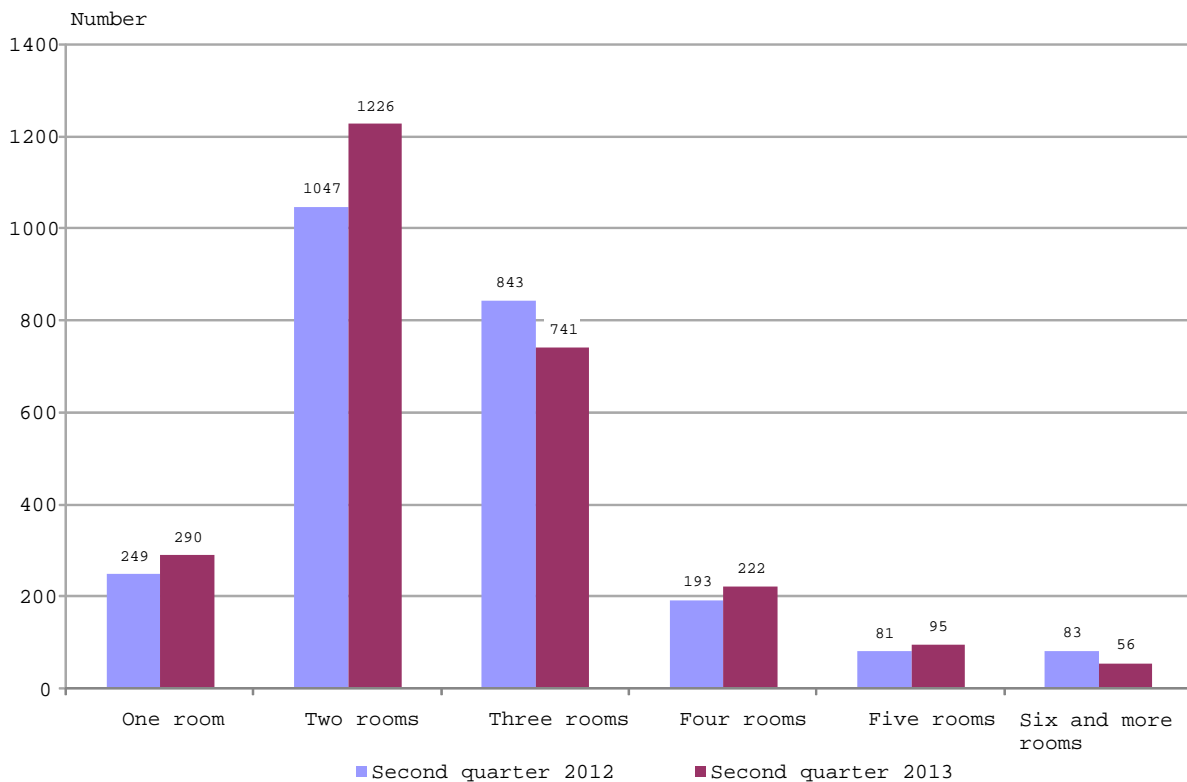
Figure 2. Newly built residential buildings and dwellings completed in the second quarter of 2013 by districts





Around half of newly built dwellings were with two rooms (46.6%), followed by those with three rooms (28.2%). Compared to the second quarter of 2012 an increase of dwellings with one, two, four and five rooms and decrease of those with three and six and more rooms was registered. The structure of the housing fund with prevailing share of dwelling with two and three rooms remained unchanged.

Figure 3. Newly built dwellings completed by number of rooms



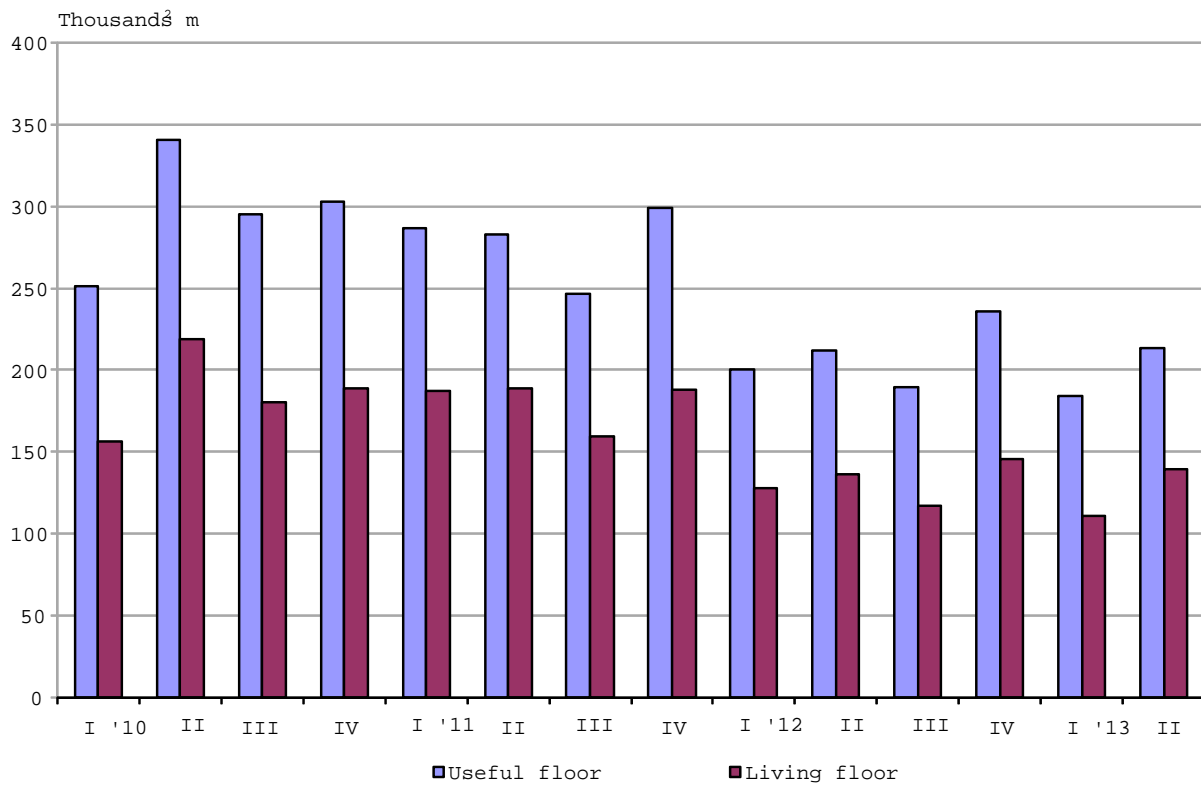
In the second quarter of 2013 **the total useful space** of the newly built dwellings was 213.2 thousand sq. m or by 0.6% more than in the same quarter of 2012. **The living floor** space also increased by 2.0% and reached 139.3 thousand sq. m (Figure 3).

At the same time **the average useful floor space** of the newly built dwelling decreased from 84.9 sq. m in the second quarter of 2012 to 81.1 sq. m in the same quarter of 2013.

The biggest average useful floor space of a newly built dwelling was recorded in the district Silistra - 174.8 sq. m and Sofia - 150.8 sq. m, and the smallest one in the district Blagoevgrad - 56.3 sq. m and district Pleven - 58.9 sq. m.



Figure 4. Total useful floor space and living floor space of the newly built dwellings completed by quarters





Methodological notes

The statistical data about the newly built residential buildings and dwellings was developed on the basis of the quarterly reports obtained from the municipal administrations.

In the scope of the survey were the newly built residential buildings with approved record of handover Form 16 or a valid usage license according to Regulation № 2/31.07.2003 of the Ministry of Regional Development and Public Works.

Living floor space is the floor space of living-rooms, bedrooms, recesses for sleeping, dining-rooms, the rooms for day-stay, cabinets and libraries of scientists and drawing-rooms but does not include the space of the kitchens.

Service floor space is the floor space of the rooms and kitchens with less than 4 square meters floor space, vestibules with a portal or an other screen, corridors, bathrooms, toilets, larders, hanging closets, other service rooms such as drying-rooms, laundries or balconies not depending on their space. The space of kitchens with over 4 sq. m. floor space is shown separately.

The useful floor space of the dwelling is sum of the living-floor-space, service floor space and the space of the kitchens.

Table 1

Newly build residential buildings and dwellings completed in the second quarter of 2013¹

Districts	Newly completed residential buildings and dwellings - number		Useful floor area of newly built dwellings - sq. m			
	Buildings	Dwellings	Total	Living floor space	Service floor space	Area of kitchens
Total	561	2630	213196	139273	54710	19213
Blagoevgrad	2	3	169	108	48	13
Burgas	105	1001	71052	48501	16453	6098
Varna	121	592	49770	31305	15404	3061
Veliko Tarnovo	24	78	5968	3270	1876	822
Vidin	7	39	3450	1741	1377	332
Vratsa	10	32	2191	1459	647	85
Gabrovo	17	49	4852	2408	1822	622
Dobrich	22	25	3137	1927	683	527
Kardzhali	9	67	5730	4233	857	640
Kyustendil	4	19	1718	998	664	56
Lovech	12	12	1386	932	332	122
Montana	1	7	427	304	85	38
Pazardzhik	14	57	5670	3545	1410	715
Pernik	6	6	730	444	228	58
Pleven	16	124	7300	4888	1453	959
Plovdiv	48	179	15361	10579	3184	1598
Razgrad	6	6	894	502	303	89
Ruse	12	28	2721	1805	669	247
Silistra	2	4	699	284	369	46
Sliven	8	32	3029	1893	847	289
Smolyan	8	12	1295	865	271	159
Sofia	44	53	7995	5022	2067	906
Sofia (stolitsa)	16	19	2443	1570	655	218
Stara Zagora	7	13	1183	890	118	175
Targovishte	1	1	93	57	36	-
Haskovo	23	93	8410	6112	1363	935
Shumen	7	26	2107	1279	770	58
Yambol	9	53	3416	2352	719	345

¹ Preliminary data.



Table 2

Newly built residential buildings by type of building

	2011				2012				2013 ¹	
	I quarter	II quarter	III quarter	IV quarter	I quarter	II quarter	III quarter	IV quarter	I quarter	II quarter
Total	688	706	672	883	609	552	559	679	549	561
Houses	491	475	454	598	446	359	381	447	394	391
Blocks of flats	133	139	106	131	83	93	100	129	89	106
Mixed buildings	13	19	36	47	28	35	28	43	25	27
Hostels	2	2	1	4	1	-	-	2	1	2
Country houses	46	70	74	101	51	64	48	57	40	35
Buildings of institutional household	3	1	1	2	-	1	2	1	-	-

¹ Preliminary data.