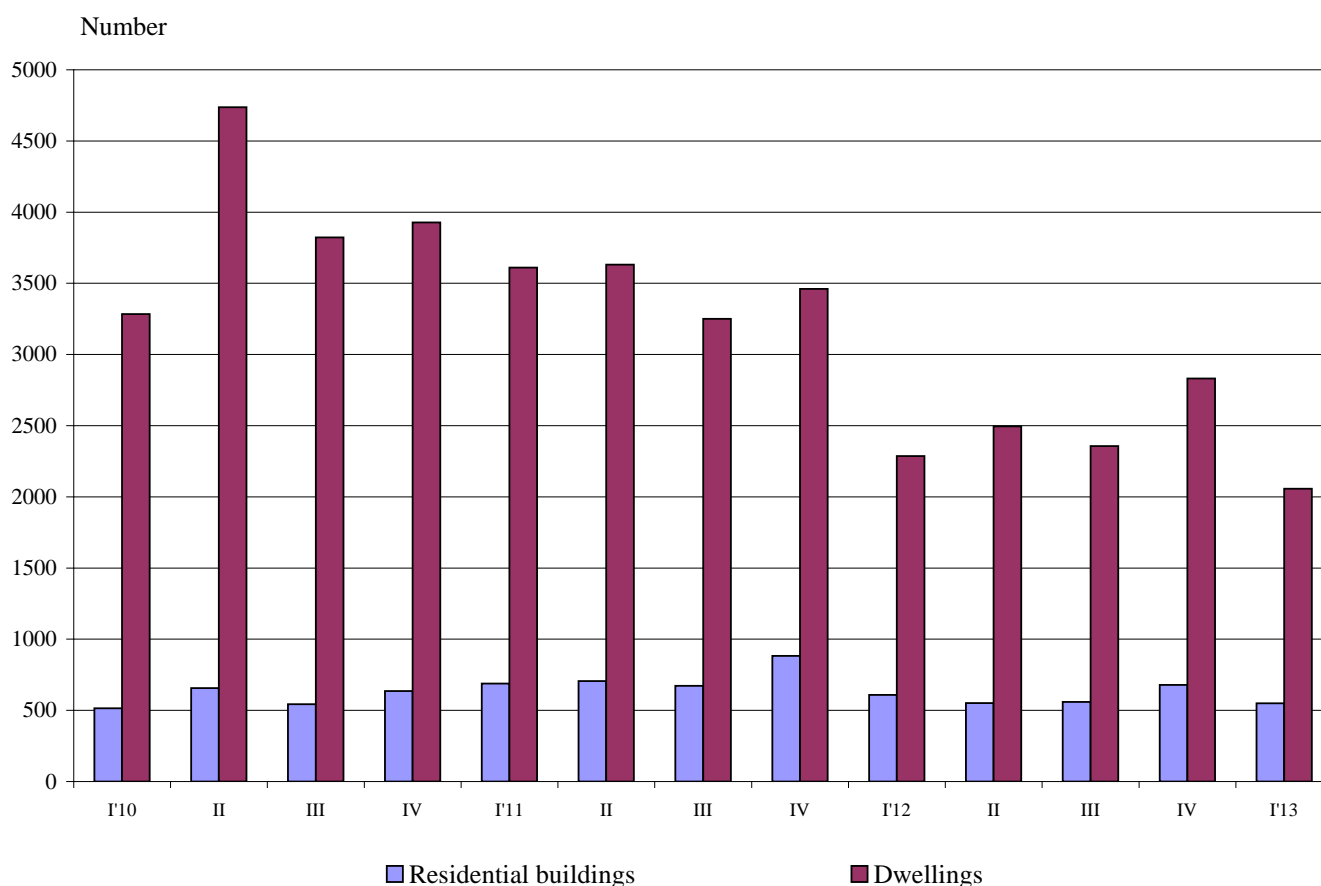




NEWLY BUILT RESIDENTIAL BUILDINGS AND DWELLINGS COMPLETED IN THE FIRST QUARTER OF 2013 (PRELIMINARY DATA)

According to the preliminary data of the National Statistical Institute in the first quarter of 2013 the number of newly built residential buildings was 549 (Annex, Table 1) and compared to the corresponding quarter of the previous year a decrease by 9.9% was registered. The newly built dwellings in them were 2 057 or by 10.1% fewer (Figure 1).

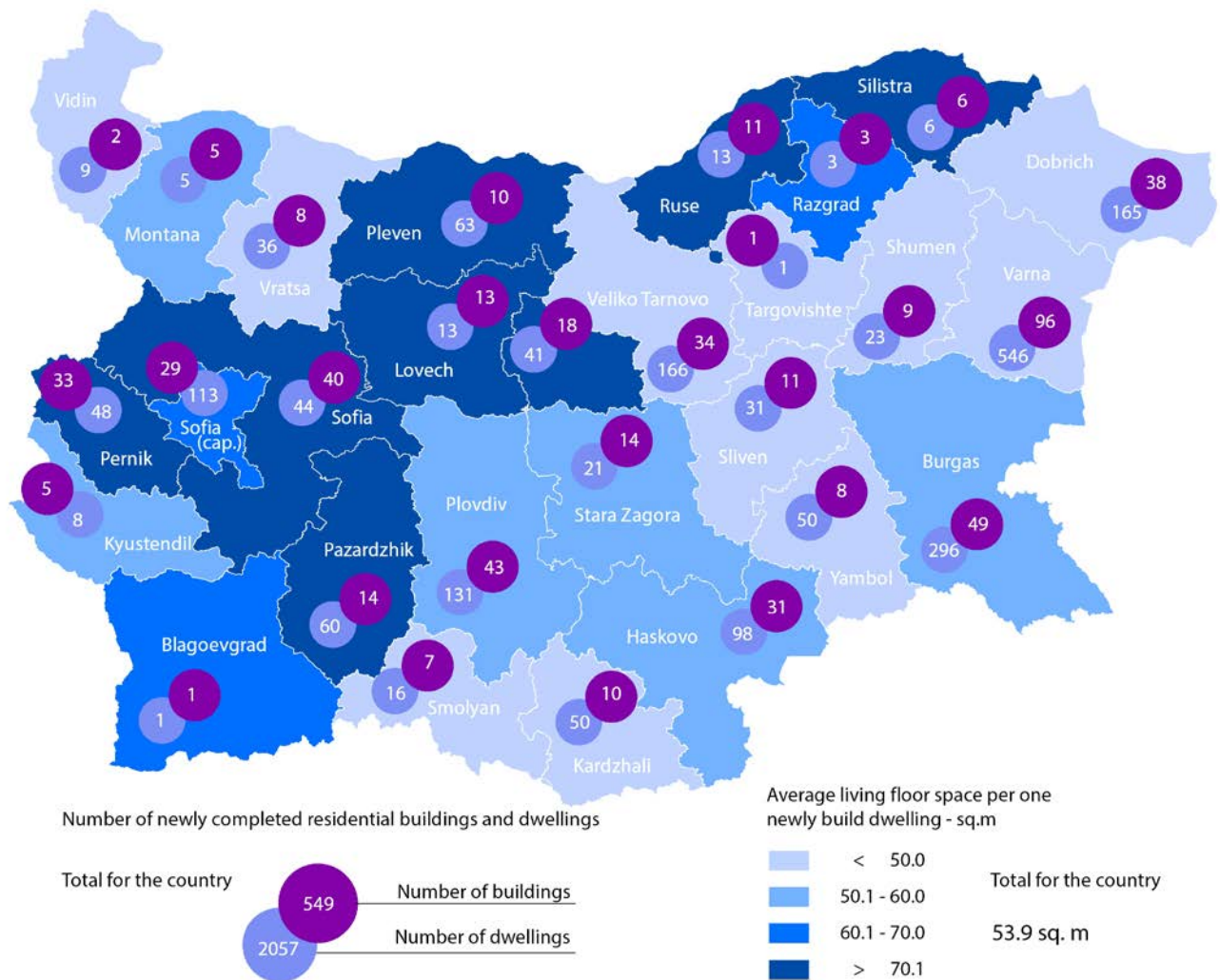
Figure 1. Newly built residential buildings and dwellings completed



The highest number of the residential buildings has been built in the district Varna - 96 buildings with 546 dwellings in them, district Burgas - 49 residential buildings with 296 dwellings and district Plovdiv - 43 residential buildings with 131 dwellings (Figure 2).



Figure 2. Newly built residential buildings and dwellings completed in the first quarter of 2013 by districts



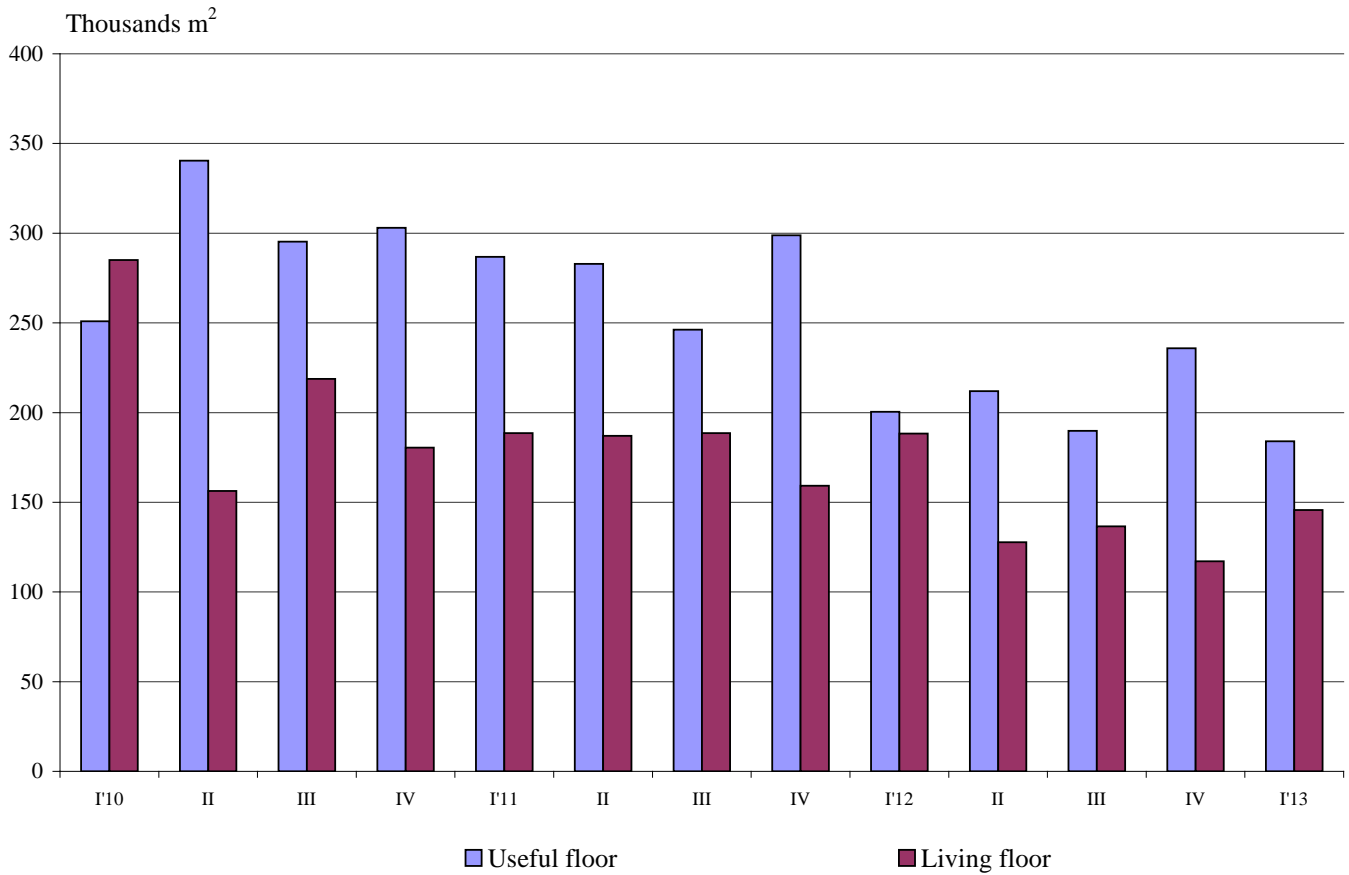
In the first quarter of 2013 **the useful space** of the newly built dwellings was 184.0 thousand sq. m or by 8.2% less than in the same quarter of 2012. **The living floor** space also decreased by 13.2% to 110.9 thousand sq. m (Figure 3).

At the same time **the average useful floor space** of the newly built dwelling increased from 87.7 sq. m in the first quarter of 2012 to 89.4 sq. m in the same quarter of 2013.

The biggest average useful floor space of a newly built dwelling was recorded in the district Silistra - 169.2 sq. m and Ruse - 158.9 sq. m, and the smallest one in the district Sliven - 67.2 sq. m and district Yambol - 70.0 sq. m.



Figure 3. Total useful floor space and living floor space of the newly built dwellings completed





Methodological notes

The statistical data about the newly built residential buildings and dwellings was developed on the basis of the quarterly reports obtained from the municipal administrations.

In the scope of the survey were the newly built residential buildings with approved record of handover Form 16 or a valid usage license according to Regulation № 2/31.07.2003 of the Ministry of Regional Development and Public Works.

Living floor space is the floor space of living-rooms, bedrooms, recesses for sleeping, dining-rooms, the rooms for day-stay, cabinets and libraries of scientists and drawing-rooms but does not include the space of the kitchens.

Service floor space is the floor space of the rooms and kitchens with less than 4 square meters floor space, vestibules with a portal or an other screen, corridors, bathrooms, toilets, larders, hanging closets, other service rooms such as drying-rooms, laundries or balconies not depending on their space. The space of kitchens with over 4 sq. m. floor space is shown separately.

The useful floor space of the dwelling is sum of the living-floor-space, service floor space and the space of the kitchens.

Table 1

Newly build residential buildings and dwellings completed in the first quarter of 2013¹

Districts	Newly completed residential buildings and dwellings - number		Useful floor area of newly built dwellings - sq. m			
	Buildings	Dwellings	Total	Living floor space	Service floor space	Area of kitchens
Total	549	2057	183959	110875	55415	17669
Blagoevgrad	1	1	125	68	48	9
Burgas	49	296	23939	14910	6803	2226
Varna	96	546	41215	23438	15103	2674
Veliko Tarnovo	34	166	12468	6992	3948	1528
Vidin	2	9	739	440	228	71
Vratsa	8	36	3035	1645	1098	292
Gabrovo	18	41	6015	2874	2786	355
Dobrich	38	165	15317	8079	5240	1998
Kardzhali	10	50	4994	2184	2500	310
Kyustendil	5	8	943	477	374	92
Lovech	13	13	1989	1251	559	179
Montana	5	5	433	280	102	51
Pazardzhik	14	60	7026	4464	1508	1054
Pernik	33	48	6783	4428	1467	888
Pleven	10	63	8510	6855	1311	344
Plovdiv	43	131	11183	7243	3040	900
Razgrad	3	3	341	196	114	31
Ruse	11	13	2066	1246	665	155
Silistra	6	6	1015	433	530	52
Sliven	11	31	2082	1184	593	305
Smolyan	7	16	1122	631	320	171
Sofia	40	44	6114	3339	2044	731
Sofia capital	29	113	10691	7774	1269	1648
Stara Zagora	14	21	1778	1208	363	207
Targovishte	1	1	102	49	38	15
Haskovo	31	98	8646	5632	2119	895
Shumen	9	23	1789	1128	471	190
Yambol	8	50	3499	2427	774	298

¹ Preliminary data.