



## MAIN LABOUR FORCE SURVEY RESULTS FOR THE FIRST QUARTER OF 2014

### Main labour market data for the first quarter of 2014

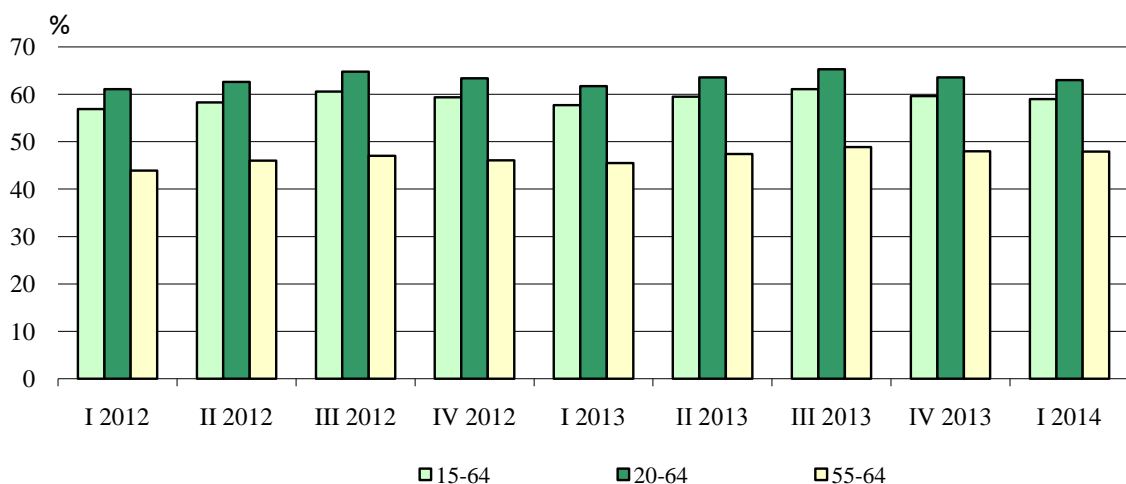
The **activity rate of population aged 15 - 64** was 68.0%, by 1.0 percentage point higher in comparison with the first quarter of 2013.

The **employment rate of population aged 15 - 64** was 59.0%, by 1.3 percentage points above its value for the corresponding quarter of the previous year.

The **unemployment rate** was 13.0%, by 0.8 percentage points lower compared to the same quarter of 2013.

There were 203.0 thousand **discouraged persons aged 15 - 64**, representing 13.2% of the total number of inactive persons in the same age group (1 541.9 thousand).

Figure 1. Employment rate by age group and by quarter



### Employment

In the first quarter of 2014 the total number of **employed persons aged 15 years and over** was 2 894.1 thousand, representing 46.5% of population in the same age group. In comparison with the first quarter of 2013 the proportion of employed persons rose by 0.9 percentage points. From all persons in employment in the first quarter of 2014, 1 533.5 thousand (53.0%) were men and 1 360.6 thousand (47.0%) were women.

Of the total number of working population 3.9% (114.2 thousand) were employers, 7.7% (222.9 thousand) were own account workers (without employees), 87.8% (2 540.9 thousand) were employees and 0.6% (16.1 thousand) were unpaid family workers. In the private sector worked 1 816.5 thousand (71.5%) of all employees, and 724.4 thousand (28.5%) employees were in the public sector.

For 4.8% of employees (for 4.1% of those in the private sector and for 6.5% of those in the public sector) the job was temporary.

In services worked 1 850.1 thousand (63.9%) of all employed persons, in industry worked 864.8 thousand (29.9%), and 179.3 thousand (6.2%) were engaged in agriculture, forestry and fishing.



In the first quarter of 2014 the employment in particular age groups was as follows:

**Employed persons aged 15 - 64 years** were 2 842.3 thousand. The employment rate for this age group was 59.0%, 61.8% and 56.2% for men and women respectively.

**The employment rate for age group 15 - 29** was 35.8%, 39.4% for men and 32.0% for women.

**The employment rate for age group 20 - 64** was 63.0%, by 1.3 percentage points higher than in the same quarter of 2013. This rate went up by 1.8 percentage points for men and by 0.8 percentage points for women, standing at 66.1% and 59.9% respectively.

There were 492.3 thousand **employed aged 55 - 64 years**, representing 47.9% of population in the same age group. In comparison with the first quarter of 2013 the employment rate (55 - 64 years) rose by 2.4 percentage points, by 2.5 percentage points for men and by 2.3 percentage points for women.

## Unemployment

In the first quarter of 2014 the number of **unemployed people** was 433.0 thousand and the **unemployment rate** was 13.0%. In comparison with the first quarter of 2013 the number of unemployed was by 5.1% lower and the unemployment rate went down by 0.8 percentage points. The decrease of unemployment was higher for men compared to women - the unemployment rate declined by 1.2 percentage points for men and by 0.2 percentage points for women, achieving 13.9% and 12.0% respectively. Of the total number of unemployed in the first quarter of 2014, 247.1 thousand (57.1%) were men and 185.8 thousand (42.9%) were women.

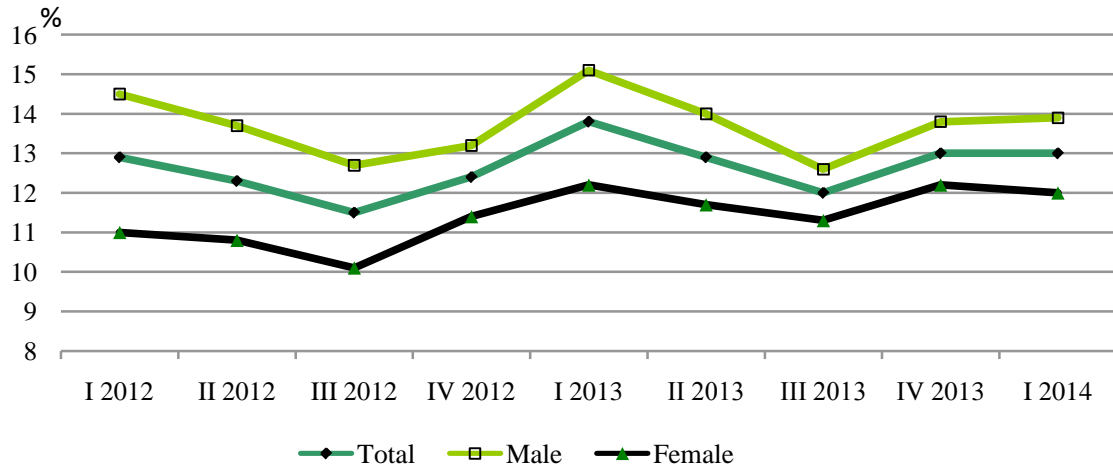
There were 254.8 thousand **long-term unemployed persons (for one year or over)**, representing 58.8% of all unemployed, and that proportion went up by 3.8 percentage points as compared to the first quarter one year ago. The long-term unemployment rate was 7.7%, being higher for men compared to women (8.4% and 6.8% respectively).

Of the total number of unemployed 59.0 thousand persons were looking for the first job and their relative share decreased from 15.8% in the first quarter of 2013 to 13.6% in the same quarter of 2014.

In the first quarter of 2014 the **unemployment rate for the age group 15 - 29** was 20.8% (21.0% for men and 20.5% for women). In comparison with the first quarter of 2013 this rate was by 2.8 percentage points lower as for men the reduction was by 3.4 percentage points and by 2.1 percentage points for women.



**Figure 2. Unemployment rate by sex and by quarter**





## Methodological notes

The Labour Force Survey (LFS) is a continuous sample survey providing quarterly and annual data on the economic activity of the population aged 15 and over. The survey covers non-institutional households.

**Reference period** - the characteristics of each interviewee refer to his/her status during a defined calendar week.

**Economically active population** (labour force) comprises all employed and unemployed persons.

**Employed** are persons aged 15 and over who during the reference period:

- performed some work for at least one hour for pay in cash or in kind or other income;
- did not work but had a job or an enterprise, a business from which they were temporarily absent due to illness, annual leave, full-paid maternity leave, parental leave, strike or another labour dispute, etc.

**Unemployed** are persons aged 15 to 74 who:

- did not work at all during the reference period;
- were actively seeking work within the preceding four weeks, including the reference one or have found a new job or business that is expected to start within 3 months following the reference period;
- were available to start working within two weeks following the reference period.

**Long-term unemployed** are persons who have been unemployed for one or more years.

**Inactive population** (persons not in the labour force) includes persons aged 15 and over who were neither employed, nor unemployed during the reference period.

**Discouraged persons** are persons not in the labour force who want to work but they do not actively look for a job, because they do not believe they will find one.

**Activity rate** - ratio between the economically active population and the total population of the same age group.

**Employment rate** - ratio between the employed population and the total population of the same age group.

**Unemployment rate** - ratio between the unemployed persons and the economically active population.

**Long-term unemployment rate** - ratio between the long-term unemployed persons and the economically active population.

The distribution of the employed persons by economic sector is done in accordance with the Classification of Economic Activities - 2008.

For the weighting of the results of the survey for the first quarter of 2014 the current population estimates as of 31 December 2013 for the population living in non-institutional households were used.

Like all sample surveys data from the Labour Force Survey are subject of errors due to the sample (stochastic errors). The calculated relative standard errors for the main LFS indicators for the first quarter of 2014 are as follows:

- total number of employed - 1.3%;
- total number of unemployed - 3.4%;



- unemployment rate - 3.0%.

Because of the rounding of the figures some of the totals (rows and columns) are not equal to the sum of the components.

More detailed data from the Labour Force Survey could be found on the NSI website [www.nsi.bg](http://www.nsi.bg), section "Labour Market", Labour Force Survey.



Appendix

Table 1

Main labour market indicators, first quarter of 2013 and 2014

	First quarter 2013	First quarter 2014	Change (First quarter 2014 minus First quarter 2013)
<b>Total</b>			
Activity rate (15 - 64) - %	67.0	68.0	1.0
Employed persons aged 15 and over - thousands	2855.0	2894.1	39.1
Employed persons aged 15 - 64 - thousands	2815.4	2842.3	26.9
Employed persons aged 15 - 24 - thousands	162.5	138.7	-23.8
Employed persons aged 15 - 29 - thousands	450.5	441.7	-8.8
Employed persons aged 20 - 64 - thousands	2805.7	2834.2	28.5
Employed persons aged 55 - 64 - thousands	473.7	492.3	18.6
Employment rate (15 and over) - %	45.6	46.5	0.9
Employment rate (15 - 64) - %	57.7	59.0	1.3
Employment rate (15 - 24) - %	20.6	18.6	-2.0
Employment rate (15 - 29) - %	35.4	35.8	0.4
Employment rate (20 - 64) - %	61.7	63.0	1.3
Employment rate (55 - 64) - %	45.5	47.9	2.4
Unemployed persons - total - thousands	456.4	433.0	-23.4
Unemployed persons aged 15 - 64 - thousands	452.6	430.3	-22.3
Unemployed persons aged 15 - 24 - thousands	68.1	51.1	-17.0
Unemployed persons aged 15 - 29 - thousands	139.3	116.2	-23.1
Unemployment rate - %	13.8	13.0	-0.8
Unemployment rate (15 - 64) - %	13.8	13.1	-0.7
Unemployment rate (15 - 24) - %	29.5	26.9	-2.6
Unemployment rate (15 - 29) - %	23.6	20.8	-2.8
Long-term unemployment rate - %	7.6	7.7	0.1
Discouraged persons - thousands	236.7	206.2	-30.5
Discouraged persons (15 - 64) - thousands	233.0	203.0	-30.0



Appendix

Table 1

Main labour market indicators, first quarter of 2013 and 2014

(Continued)

	First quarter 2013	First quarter 2014	Change (First quarter 2014 minus First quarter 2013)
<b>Male</b>			
Activity rate (15 - 64) - %	70.9	72.0	1.1
Employed persons aged 15 and over - thousands	1499.0	1533.5	34.5
Employed persons aged 15 - 64 - thousands	1474.8	1500.1	25.3
Employed persons aged 15 - 24 - thousands	96.4	83.1	-13.3
Employed persons aged 15 - 29 - thousands	255.1	249.9	-5.2
Employed persons aged 20 - 64 - thousands	1469.4	1495.7	26.3
Employed persons aged 55 - 64 - thousands	244.3	253.8	9.5
Employment rate (15 and over) - %	49.7	51.2	1.5
Employment rate (15 - 64) - %	60.1	61.8	1.7
Employment rate (15 - 24) - %	23.8	21.7	-2.1
Employment rate (15 - 29) - %	38.9	39.4	0.5
Employment rate (20 - 64) - %	64.3	66.1	1.8
Employment rate (55 - 64) - %	49.8	52.3	2.5
Unemployed persons - total - thousands	267.5	247.1	-20.4
Unemployed persons aged 15 - 64 - thousands	265.4	246.4	-19.0
Unemployed persons aged 15 - 24 - thousands	41.9	29.7	-12.2
Unemployed persons aged 15 - 29 - thousands	82.1	66.6	-15.5
Unemployment rate - %	15.1	13.9	-1.2
Unemployment rate (15 - 64) - %	15.3	14.1	-1.2
Unemployment rate (15 - 24) - %	30.3	26.3	-4.0
Unemployment rate (15 - 29) - %	24.4	21.0	-3.4
Long-term unemployment rate - %	8.7	8.4	-0.3
Discouraged persons - thousands	130.0	116.1	-13.9
Discouraged persons (15 - 64) - thousands	128.1	114.2	-13.9



Appendix

Table 1

Main labour market indicators, first quarter of 2013 and 2014

(Continued and end)

	First quarter 2013	First quarter 2014	Change (First quarter 2014 minus First quarter 2013)
<b>Female</b>			
Activity rate (15 - 64) - %	63.0	63.9	0.9
Employed persons aged 15 and over - thousands	1356.0	1360.6	4.6
Employed persons aged 15 - 64 - thousands	1340.7	1342.2	1.5
Employed persons aged 15 - 24 - thousands	66.1	55.6	-10.5
Employed persons aged 15 - 29 - thousands	195.4	191.8	-3.6
Employed persons aged 20 - 64 - thousands	1336.3	1338.4	2.1
Employed persons aged 55 - 64 - thousands	229.4	238.4	9.0
Employment rate (15 and over) - %	41.7	42.2	0.5
Employment rate (15 - 64) - %	55.3	56.2	0.9
Employment rate (15 - 24) - %	17.2	15.3	-1.9
Employment rate (15 - 29) - %	31.6	32.0	0.4
Employment rate (20 - 64) - %	59.1	59.9	0.8
Employment rate (55 - 64) - %	41.7	44.0	2.3
Unemployed persons - total - thousands	188.8	185.8	-3.0
Unemployed persons aged 15 - 64 - thousands	187.2	183.9	-3.3
Unemployed persons aged 15 - 24 - thousands	26.3	21.4	-4.9
Unemployed persons aged 15 - 29 - thousands	57.1	49.5	-7.6
Unemployment rate - %	12.2	12.0	-0.2
Unemployment rate (15 - 64) - %	12.3	12.1	-0.2
Unemployment rate (15 - 24) - %	28.4	27.8	-0.6
Unemployment rate (15 - 29) - %	22.6	20.5	-2.1
Long-term unemployment rate - %	6.3	6.8	0.5
Discouraged persons - thousands	106.7	90.1	-16.6
Discouraged persons (15 - 64) - thousands	104.9	88.7	-16.2